

FAST AND TRUE — INTREPID



Builder: INTREPID

Year Built: 2014

Model: Cruiser

Price: PRICE ON APPLICATION

Location: United States

LOA: 47' 5" (14.45m)

Beam: 13' 8" (4.17m)

Cruise Speed: 35 Kts. (40 MPH)

Max Speed: 45 Kts. (52 MPH)

Our experienced yacht broker, Andrey Shestakov, will help you choose and buy a yacht that best suits your needs **Fast and True — INTREPID** from our catalogue. Presently, at Shestakov Yacht Sales Inc., we have a wide variety of yachts available on our sale's list. We also work in close contact with all the big yacht manufacturers from all over the world.

If you would like to buy a yacht **Fast and True — INTREPID** or would like help answering any questions concerning purchasing, selling or chartering a yacht, please call **+1(954)274-4435**

TABLE OF CONTENTS

TABLE OF CONTENTS	2
SPECIFICATIONS	3
Basic Information	3
Dimensions	3
Speed, Capacities and Weight	3
Accommodations	3
Hull and Deck Information	3
Engine Information	4
DETAILED INFORMATION	5
Additional Salesperson's Remarks	5
Custom Features	5
Equipment	5
Salon/ Berth	7
Guest Stateroom (Stbd)	7
Master Cabin (Port)	7
Exterior	7
Electronics	8
Exclusions	9
Disclaimer	9
PHOTOS	10
CONTACTS	16
Contact details	16
Telephones	16
Office hours	16
Address	16

SPECIFICATIONS

Basic Information

Category: Cruiser

Sub Category: Sport Cruiser

Model Year: 2015

Year Built: 2014

Country: United States

Vessel Top: Half Tower

Dimensions

LOA: 47' 5" (14.45m)

Beam: 13' 8" (4.17m)

MFG Length: 47' 0" (14.33m)

Speed, Capacities and Weight

Cruise Speed: 35 Kts. (40 MPH)

Max Speed: 45 Kts. (52 MPH)

Water Capacity: 100 Gallons

Holding Tank: 20 Gallons

Fuel Capacity: 480 Gallons

Accommodations

Total Cabins: 2

Total Heads: 1

Hull and Deck Information

Hull Material: Fiberglass

Hull Configuration: Deep Vee

Hull Color: White Gel Coat & Metallic Bay
Blue Paint

Engine Information

Engines: 3

Manufacturer: Seven Marine

Model: 557

DETAILED INFORMATION

Additional Salesperson's Remarks

The Intrepid Yacht is the epitome of refined luxury and magnificent comfort. The Intrepid 475 helm boasts commanding views and a console with room for the latest flat-screen navigation equipment. Luxurious bridge deck lounge seating wraps around the helm, inviting east conversation, with room for a full wet bar, standard separate drink cooler, and optional air conditioning. Aft of the helm, 100 square-feet of wide open space is ready to be rigged for your favorite activities - for diving, fishing, or simply for the enjoyment of a broad sundeck that is perfect for lounging. Below you'll step into Intrepid's largest and most luxurious master stateroom, the perfect blend of practicality and lavish amounts of space. The salon offers generous room for guests to congregate "pass-by" space. The media center accommodates the latest audio-visual systems. The head compartment boasts 6'4" headroom and includes a separate shower room with stall shower or optional second head. This level of luxury is unmistakably the Intrepid 475 Sport Yacht!

Custom Features

- **Triple 557's w/ Carbon Fiber Pkg and Joy Stick (165 Hours, Just Serviced)**
- **Sea Keeper Gyro Stabilizer**
- **12KW Generator with 25 Gallons Diesel Fuel Tank**
- **Custom Imron Blue Bay Paint**
- **Extensive Electronics Package**
- **SS Tow Package**
- **Always Stored Inside!**
- **Immaculate Condition!**

Equipment

- 475 Sport Yacht walk around w/ 2 staterooms
- Latham power steering
- White Gelcoat
- Metallic Bay Blue paint
- Boot stripe
- Accent stripe
- Hull-side door swing in with fold out ladder
- 3 Speed wiper w/ washer system
- Wrap around windshield glass with SS frame
- Custom fiberglass arch
- Digital trim tab indicators w/ auto retract

- Shore power w/ battery charger
- Bow thruster
- Windlass w/ 300' of line and 20' of chain
- Polished SS claw anchor
- Glendenning 50 amp cable master w/ 60' shore cord
- Triple engine flush system
- Upgrade shore power to 230v/ 60hz/ 50amp power upgrade ro A/C hot water and stove
- Upgrade generator to 12kw 230V/ 60hz/ 50 amp
- 24,000 BTU AC with split system
- Pompanette 55" electric helm seat
- Cockpit coaming bolster
- Electric head w/ holding tank and overhead discharge
- Freshwater supply to electric head
- Transom shower (hot and cold)
- Freshwater washdown in windlass compartment
- Removable rear bench seating
- Sea-keeper Gyro Stabilizer
- Electric stove-top
- Cabin- sole wood flooring
- Side by side refrigerator/ freezer
- Solid surface counter-tops- galley and head compartment
- Wood veneered cabinetry
- Electric hot water heater
- Bed spreads and pillow shams
- Powder coat all aluminum (includes bow rail)
- Rod holders in gunwales
- Electric ball valve
- LED spreader light on aft of top
- Rod holders on Aft of Top (on fiberglass top)
- Triple Seven Marine 557 HP's w/ carbon fiber package and joy stick
- 1/2 tower w/ fiberglass top
- All hull side windows- smoked color
- Towing package and engine cover
- Baitwell in cockpit sole with macerator
- Removable fiberglass table (oval style) mounted forward & aft of mid ship
- Cleats on the port and starboard side
- Rod rack under starboard side gun wale
- SS rub rail insert
- Two additional LED lights mounted under the hard top
- Fiberglass folding rear bench seat
- Aft cockpit coaming bolsters- mystic white
- Folding rear bench seat- mystic white
- General Throughout:
- Wood veneer: unstained cherry gloss

- Flooring: teak and maple
- Walls/ bulkheads/ headboards/ window framing
- Valances
- Corian counter-tops

Salon/ Berth

- Settee upholstery- ultra leather promessa
- Settee pillows
- Settee throw pillow welting
- Drapery

Guest Stateroom (Stbd)

- Guest bed spread
- Guest bed shams
- Gues bed sham flange
- Throw pillows
- Throw pillow welting

Master Cabin (Port)

- Bed spread
- Bed shams
- Bed sham flange
- Throw pillows
- 511 Wedgewood
- Throw pillow welting
- Drapery

Exterior

- Hull- Imron bay blue effect
- Boot- charcoal effect
- Pinstripe- silver effect
- All upholstered seating and combing bolsters (helm seat, aft bench and bow sunpad included)
- Seven Marine engine mail color- Imron charcoal effect
- The #7 and the 557 on engines is Imron bay blue effect
- The carbon fiber matches BMW racing

- Freshwater water wash down in windlass compartment

Electronics

- 2 GPSMAP8215MFD Chartplotters
- 2 4" SS GPS Antenna Mount
- 1 12KW 4' Open Array HD Radar
- 1 Autopilot system with smart pump
- 1 Chirp remote sounder
- 1 1KW 20 degree tilted element
- 1 Sirius XM weather receiver
- 1 4" SS GPS antenna mount
- 1 Network hub
- 2 VHF Radio w/ AIS and rear mount mics
- 2 Command mics
- 2 Command extension cables
- 2 8' Galaxy VHF 6db extend performance
- 2 Heavy duty ratchet mount
- 1 Dual USB charger socket
- 1 640x480 Pixel res therm image camera
- 1 6" Vertical mount
- 1 Flir MD mounting plate
- 1 One in three out video amplifier
- 2 Garmin displays
- 1 24V spotlight
- 1 Nav Tracker SAT/GPS device w/ remote
- 1 TV3 DirecTV Satellite TV system
- 1 H24 DirecTV receiver
- 1 RF remote kit
- 1 One in Three out video amplifier (virw on 2 Garmin displays and salon TV)
- 1 Rogue wireless extender
- 1 18" WiFi antenna
- 1 Heavy duty ratchet set
- 1 Met gear wireless router
- 1 Handheld sat phone in Pelican case
- 1 Marine I-pod/ phone dock
- 1 Full function wired remote mounted in salon
- 4 7 7" Coax speaker system pair
- 2 10" marine subwoofer
- 2 5 channel amplifier
- 10 Interchangeable FF10,000 Lumens set of 2
- 4 Interchangeable FF 10,000 Lumens
- Underwater lighting system

- 19" TV in Master
- Only receiver on boat for the following locations: salon, master & garmin on helm
- Samsung 24" LED TV in Salon

Exclusions

Owner's personal belongings.

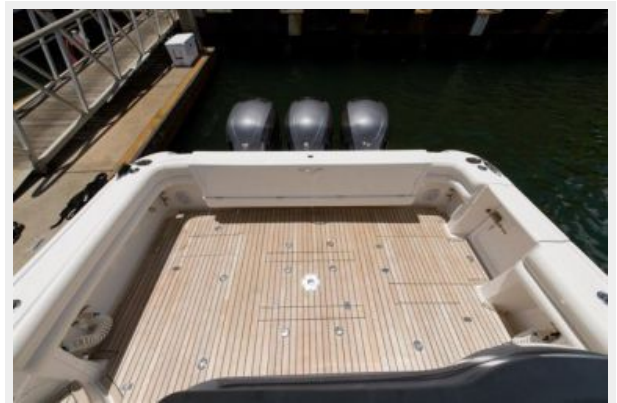
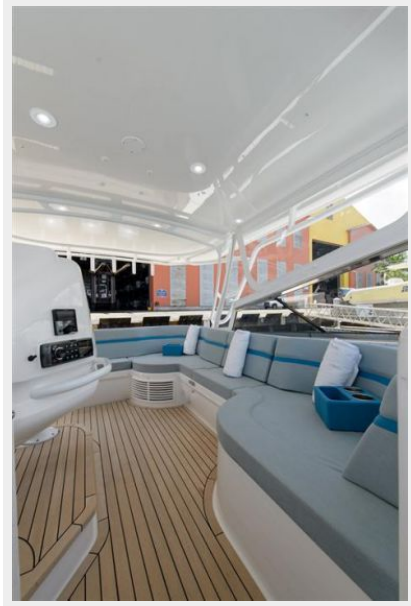
Disclaimer

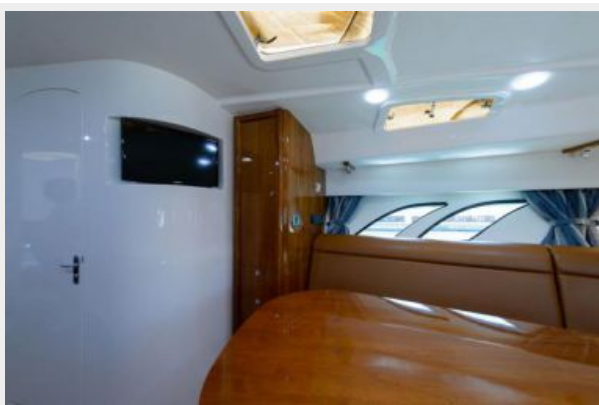
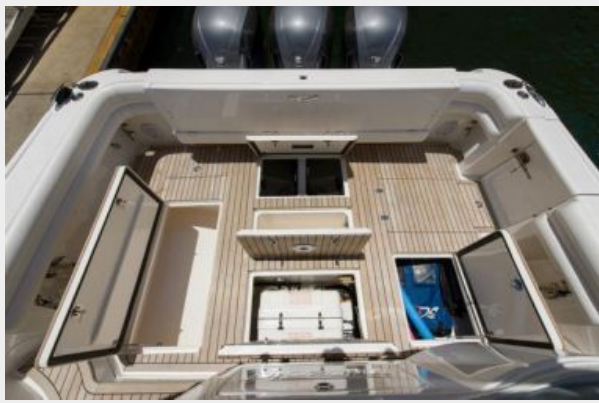
The Company offers the details of this vessel or yacht in good faith but cannot guarantee or warrant the accuracy of this information nor warrant the condition of the vessel. A buyer should instruct his representatives, agents, or his surveyors, to investigate such details as the buyer desires validated. This vessel or yacht is offered subject to prior sale, price change, or withdrawal without notice.

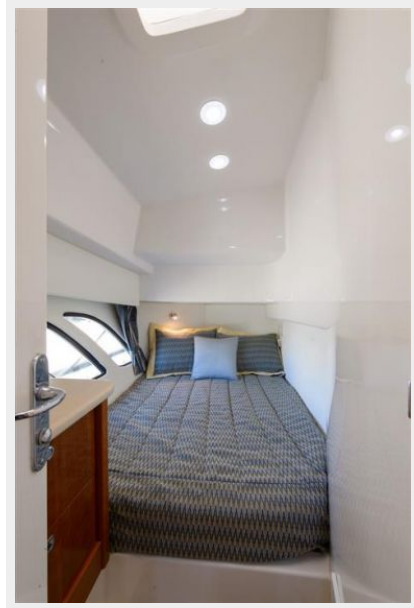
PHOTOS













CONTACTS

Andrey Shestakov, leading yacht broker of the sales department of Shestakov Yacht Sales Inc. Shestakov Yacht Sales Inc., the official representative of the Miami/Fort Lauderdale FL headquarters.

Contact details

Email: andrey@shestakovyachtsales.com

Web: shestakovyachtsales.com/en/

Telephones

USA: +1(954)274-4435

Office hours

Monday – Saturday: **9:00 - 21:00** EDT

Sunday: **closed**

Address



Harbour Towne Marina, 850 NE 3rd St,
STE 213, Dania, FL 33004