

## PRIVATE ISLAND — VIKING



**Судостроитель:** VIKING

**Год постройки:** 2008

**Модель:** Катер для спортивной рыбалки

**Цена:** **ЦЕНА ЯХТЫ ПО ЗАПРОСУ**

**Местонахождение:** United States

**Длина общая:** 60' 0" (18.29m)

**Ширина:** 18' 9" (5.72m)

**Макс. осадка:** 5' 1" (1.55m)

**Крейс. скорость:** 34 Kts. (39 MPH)

**Макс. скорость:** 40 Kts. (46 MPH)

Купить **PRIVATE ISLAND — VIKING** а также выбрать подходящую вам яхту из нашего каталога яхт вам поможет опытный яхтенный брокер Андрей Шестаков. На сегодняшний день компания **Shestakov Yacht Sales Inc.** имеет большое количество яхт в собственном списке продаж, а также тесно сотрудничает со всеми крупными яхтенными производителями по всему миру.

Для того чтобы купить яхту **PRIVATE ISLAND — VIKING** а также проконсультироваться по любому вопросу связанному с покупкой, продажей, чартером яхт позвоните по телефону **+7(918)465-66-44**.

# ОГЛАВЛЕНИЕ

ОГЛАВЛЕНИЕ	2
ХАРАКТЕРИСТИКИ	6
Обзор	6
Основная информация	6
Размеры	6
Скорость, вместимость и масса	6
Размещение	7
Корпус и палуба	7
Информация о двигателе	7
ПОДРОБНОЕ ОПИСАНИЕ	8
Accommodations	8
Companionway	8
Master Stateroom, Midship	8
VIP Stateroom, Forward	9
Guest Stateroom, Starboard	9
Salon	9
Master Head	10
Guest Head, Forward	10
Guest Head 2	10
Galley	11
Helm / Electronics and Navigation	11
Deck	12
Engine and Mechanical Equipment	13
Electrical System / Equipment	14
Cockpit / Fishing Equipment	14
Exclusions	15
Salesman's Comments	16
Исключения	16

Отказ от ответственности	16
ФОТОГРАФИИ	17
Profile 2	17
Profile 3 - Forward View	17
Companionway - Clothes Washer & Dryer	17
Master Stateroom 1	17
Master Stateroom 3	18
Master Stateroom 2	18
Master Stateroom 4	18
Master Stateroom 5	18
VIP Stateroom 1	19
VIP Stateroom 2	19
VIP Stateroom 3	19
VIP Stateroom 4	19
Guest Stateroom, Starboard 2	20
Guest Stateroom, Starboard 1	20
Salon 1	20
Salon 2	20
Salon 3	20
Master Head 1	20
Master Head 2	21
Master Head 3	21
Guest Head, Forward 1	21
Guest Head, Forward 2	21
Guest Head 1	22
Guest Head 2	22
Galley	22
Helm / Electronics & Navigation 1	22
Helm / Electronics & Navigation 3 - Starboard Radio Box	23

Helm / Electronics & Navigation 2 - Port Radio Box	23
Helm / Electronics & Navigation 4 - Drop Down Box	23
Helm / Electronics & Navigation 5 - Helm Pod Gauges	23
Deck 2 - Custom Stainless Steel Plow Anchor	24
Deck 1 - Bow	24
Deck 3 - View From Bow	24
Deck 4 - Custom Fender Rack	24
Deck 5 - Helm Chair	25
Deck 6 - Forward Bridge Seating	25
Deck 7 - Port Side Bridge Seating	25
Deck 8 - Starboard Side Bridge Seating	25
Deck 9 - Refrigerated Drink Box & Storage	26
Deck 10 - Bridge Entry Cover	26
Engine & Mechanical Equipment 1 - Engine Room	26
Engine & Mechanical Equipment 2 - Engine Room	26
Engine & Mechanical Equipment 3 - Port Engine	26
Engine & Mechanical Equipment 4 - Port Engine	26
Engine & Mechanical Equipment 5 - Starboard Engine	27
Engine & Mechanical Equipment 6 - Starboard Engine	27
Engine & Mechanical Equipment 7 - Engine Room	27
Engine & Mechanical Equipment 8 - Engine Room	27
Engine & Mechanical Equipment 9 - Water Maker	27
Engine & Mechanical Equipment 10 - Engine Room	27
Engine & Mechanical Equipment 11 - Engine Room	28
Engine & Mechanical Equipment 12 - Engine Room	28
Engine & Mechanical Equipment 13 - Forward Bilge	28
Engine & Mechanical Equipment 14 - Engine Room	28
Electrical System / Equipment - Generator	28
Cockpit / Fishing Equipment 1 - Mezzanine	28

---

Cockpit / Fishing Equipment 3 - Mezzanine Freezer & Storage	29
Cockpit / Fishing Equipment 2 - Mezzanine	29
Cockpit / Fishing Equipment 4 - Custom Rod Storage Port	29
Cockpit / Fishing Equipment 5 - Custom Rod Storage Starboard	29
Cockpit / Fishing Equipment 7 - Starboard Fish Box	30
Cockpit / Fishing Equipment 6 - Port Fish Box w/ Ice Chipper Outlet	30
Cockpit / Fishing Equipment 8 - Grill & Tackle Storage	30
Cockpit / Fishing Equipment 9 - Electric Grill	30
Cockpit / Fishing Equipment 10 - Cockpit	31
Cockpit / Fishing Equipment 11 - Cockpit	31
Cockpit / Fishing Equipment 13 - Teaser Reels	31
Cockpit / Fishing Equipment 12 - Cockpit	31
<b>КОНТАКТЫ</b>	<b>32</b>
Контактная информация	32
Телефоны	32
Время работы	32
Адрес	32

# ХАРАКТЕРИСТИКИ

## Обзор

***Check out this tricked out 60' Viking Convertible! Her teak toe rail, teak eye brow, teak Deck and teak covering boards give her a custom look! Her 60' Viking bottom gives her a fast, dry ride in all sea conditions! Her knowledgeable owner has made constant improvements and all service is up to date! HER OWNERS PLANS HAVE CHANGED - PLEASE MAKE OFFERS!!!***

## Основная информация

**Тип судна:** Катер для спортивной рыбалки

**Подкатегория:** Convertible

**Модельный год:** 2008

**Год постройки:** 2008

**Страна:** United States

**Кубрик:** Да

## Размеры

**Длина общая:** 60' 0" (18.29m)

**Ширина:** 18' 9" (5.72m)

**Макс. осадка:** 5' 1" (1.55m)

## Скорость, вместимость и масса

**Крейс. скорость:** 34 Kts. (39 MPH)

**Крейсерская скорость поворота:** 1950 Kts.

**Макс. скорость:** 40 Kts. (46 MPH)

**Водоизмещение:** 91300 Pounds

**Вместимость воды:** 300 Gallons

**Вместимость сточного бака:** 135 Gallons

**Объем топливного бака:** 1620 Gallons

## Размещение

---

Всего кают: 3

Всего коек: 6

Спальные места: 6

Всего ком. состава: 3

## Корпус и палуба

---

Материал корпуса: Fiberglass

Материал палубы: Fiberglass

Комплектация корпуса: Modified V-Hull

## Информация о двигателе

---

Двигатели: 2

Производитель: Caterpillar

Модель: C-32

Тип двигателя: Inboard

Тип топлива: Diesel

---

# ПОДРОБНОЕ ОПИСАНИЕ

---

## Accommodations

---

Sleeps six owners and guests in three Staterooms for a total of six berths. One Master Head with shower, two Guest Heads with showers. Enter the Salon from the port side of Mezzanine Deck. The Salon is beautifully finished in satin teak and warm fabrics. The large L-shaped "Dewberry" sofa is to starboard. It's very comfortable and provides lots of storage below. The dinette is forward on the starboard side. Her Galley is very functional with gorgeous granite tops and two bar stools. Step down the Companionway to find a very comfortable Master Stateroom to port with en-suite Head. Cross the Companionway to find the aft Guest Stateroom with side-by-side berths and plenty of storage. Go forward to the cross-over forward Stateroom with en-suite Head. This boat is beautifully appointed!

## Companionway

---

- Carpeting
- LED Lighting
- Linen storage locker
- Gost Motion detector
- Central vacuum system
- Teak strips between wall panels
- Laundry center w/ washer & dryer
- Access to storage behind flat-panel TV
- Awlgrip bilge areas w/ access hatches & LED lighting

## Master Stateroom, Midship

---

The midship Master Stateroom features a diagonal queen bed, large hanging locker and storage credenza!

- Custom wallpaper
- 26" Flat-screen TV
- Large hanging locker
- Drawer storage under bed
- New Innerspring mattress (2016)
- Entry credenza w/ drawer storage
- Overhead Xenon lighting w/ dimmer
- Reading lights overhead w/ separate switches
- Air conditioning w/ reverse cycle heat & SMX controls
- Recessed stereo speakers tied into Salon stereo w/ remote control
- Queen-sized walk-around diagonal bed w/ mattress & lift up top w/ gas pistons & maple-



lined storage underneath

## VIP Stateroom, Forward

---

- Teak shelf
- Custom wallpaper
- 19" Flat-screen TV
- Storage under top bunk
- Storage drawers under bed
- Overhead Xenon lights w/ dimmer
- Reading lights w/ separate switches
- Spacious maple-lined hanging locker
- Double bed w/ single crossover upper bunk
- Air conditioning w/ reverse cycle heat w/ temperature control

## Guest Stateroom, Starboard

---

- Spacious maple-lined hanging locker
- Storage drawers located under hanging locker
- Reading lights recessed in headliner w/ separate switches
- Air conditioning w/ reverse cycle heat w/ temperature control
- Side-by-side twin berths w/ the lift-up outboard bunk top for storage underneath

## Salon

---

- 40" Flat-screen TV
- Electric Salon door
- Clear Ice ice maker
- Custom teak valances
- AM / FM / SAT stereo system
- Hunter Douglas Silhouette blinds
- Overhead Xenon lighting w/ dimmers
- Custom headliner w/ teak accent strips
- Carpeting w/ sound absorbing padding
- Teak cocktail table w/ Hi - Lo mechanism
- Teak frame lambrequins w/ upholstered inserts
- Air conditioning w/ reverse cycle heat & SMX controls
- Frameless Salon windows & aft window w/ deep tint for privacy
- Main electrical panel & generator switching panel w/ Octoplex System
- Amtico flooring at Salon entrance for easy access to electrical panel without soiling carpet

---

## Master Head

---

- Sink
- Shower light
- Linen storage
- Granite counters
- Custom Amtico flooring
- Exhaust fan w/ vent in soffit
- Satin nickel towel bar & ring
- Mirror wall around upper vanity
- Lower vanity w/ curved teak face
- Medicine cabinet w/ mirrored doors
- Air conditioning / heat with vent in soffit
- One-piece custom frameless shower door
- Sealand Magnum Opus vacuum flush head
- Storage cabinet w/ shelves & mirrored door
- Overhead Xenon lights recessed in soffit & in ceiling
- Fiberglass stall shower w/ satin nickel shower fixtures & with drain to automatic sump pump in bilge

---

## Guest Head, Forward

---

- Sink
- Shower light
- Linen storage
- Granite counters
- Custom Amtico flooring
- Exhaust fan w/ vent in soffit
- Satin nickel towel bar & ring
- Mirror wall around upper vanity
- Lower vanity w/ curved teak face
- Medicine cabinet w/ mirrored doors
- Air conditioning / heat with vent in soffit
- Sealand Magnum Opus vacuum flush head
- Overhead Xenon lights recessed in soffit & in ceiling
- Fiberglass stall shower w/ satin nickel shower fixtures & with drain to automatic sump pump in bilge

---

## Guest Head 2

---

- Sink
- Shower light

- Linen storage
- Granite counters
- Custom Amtico flooring
- Exhaust fan w/ vent in soffit
- Satin nickel towel bar & ring
- Mirror wall around upper vanity
- Lower vanity w/ curved teak face
- Medicine cabinet w/ mirrored doors
- Air conditioning / heat with vent in soffit
- Sealand Magnum Opus vacuum flush head
- Overhead Xenon lights recessed in soffit & in ceiling
- Fiberglass stall shower w/ satin nickel shower fixtures & with drain to automatic sump pump in bilge

## Galley

---

- Exhaust fan
- Garbage disposal
- Custom Amtico flooring
- Four-burner electric cooktop
- Stainless steel undermount sink
- (1) Sub-Zero two-drawer freezer
- Teak dinette table w/ teak pedestal
- Microwave oven / Convection oven
- Spice cabinet in end of Galley island
- Overhead Xenon lighting on dimmers
- (2) Sub-Zero, four-drawer refrigerators
- Lower Galley cabinets & drawer storage
- Upper Galley storage cabinets w/ deep pull-out drawers (four drawers in two cabinets)

## Helm / Electronics and Navigation

---

- (2) GPS sensors
- Power assist steering
- Ghost security camera
- CAT electronic displays
- Furuno FA30 AIS module
- Simrad AP2621 auto pilot
- Tracphone 252 SAT phone
- Furuno RD30 depth / temp
- (2) Icom M604 VHF radios
- (3) KEP 17" Color monitors

- Furuno DR512A digital radar
- Furuno Black box 3D sounder
- CAT Electronic engine controls
- Electronic trolling valve controls
- TracVision M5 Satellite TV dome
- Garmin 8000 black box w/ wifi sensor
- Weather module for Furuno 3D system
- Fuel gauge located in cabinet at Console
- Fusion 750 stereo system w/ remote in Salon
- 50kHz & 200kHz Flush-mounted transducers
- Lighted, flush-mounted compass on Centerline
- (2) Furuno MFDBB NAV NET 3D black boxes
- Custom stainless steel steering wheel for Helm pod
- Garmin 8" Touch screen in overhead drop-down box
- Manual engine shut-down switches at cabinet in Console
- Moritz Octoplex touch-screen control panel w/ audible & visible alarms
- Electronics box lids drilled & tapped for gas pistons instead of thru bolts
- Release teak Helm pod w/ single lever electronic controls w/ emergency stops

## Deck

---

- Teak toe rail
- Anchor light
- Teak Cockpit
- Cockpit cover
- Helm Pod cover
- Navigation lights
- Haunch handrails
- Custom boot stripe
- Teak eyebrow trim
- Split lid radio boxes
- (2) Trumpet style air horns
- Bridge hatch opening cover
- Pop-up stainless steel cleats
- Clean foredeck - No bow rail
- Custom light mast on hardtop
- Sunshade w/ stainless steel poles
- Fresh water outlet forward locker
- Three-Sided Costa Clear enclosure
- Non-skid Deck for traction & durability
- Bridge installed without exposed fasteners
- Forward anchor locker w/ wash down outlet
- Teak covering boards wrapped over gunnels

- Refrigerated top loading freezer box forward
- Under Helm access w/ lights & storage room
- Port & starboard cabinet at aft end of lounge seating
- Windshield, Centerline Venturi cut-out to maximize visibility
- Stainless steel plow anchor w/ stainless steel chute & windlass
- Recessed electronics box in Console for custom electronics package
- Flybridge handrail wrapped under Bridge overhang for a clean look
- Recessed radio boxes, large radio box on port & starboard side of Console
- Stereo speakers flush-mounted to aft ends of Bridge w/ volume control in radio box
- Powder-coated aluminum handrails effectively positioned above ladder to Bridge & at Helm
- Center Console walk-around Helm w/ electronic stowage in a raised pod w/ additional stowage below
- Refrigerated top loading chill box at forward starboard corner for keeping drinks & snacks accessible from Bridge
- Extended overhang for extra room to move behind Helm & Companion seats w/ anodized aluminum aft railing
- Port, starboard & forward lounge seating w/ vinyl covered foam cushions hinged for access to storage & rod storage under seats
- Palm Beach Towers hardtop w/ drop down overhead box, teaser reel box, flush-mounted halogen spreader lights & overhead Xenon lighting

## Engine and Mechanical Equipment

---

- Dual AC pumps
- Stainless steel rudders
- Water maker (new 2014)
- Centralized sea-water system
- Power assist hydraulic steering
- Gost power & high water sensors
- Gost sensor on Engine Room door
- Engine Room cameras w/ switcher
- Fresh water supply in Engine Room
- Onan 21.5kW generator w/ 2650 hrs.
- Engine Room entrance gauge package
- Upgraded LED lights in Engine Room
- Hour meters on main engines & generator
- Generator mufflers w/ gas-water separator
- Electric fuel priming pumps for main engine
- 20gallon Electric, quick recovery water heater
- Dual stage variable speed 110v AC fresh water system
- Twin 1825 hp. Diesel I/B 2008 CAT C-32's w/ 1960 hrs.
- Fire suppression system, automatically or manually operated
- Trim tabs w/ center, port & starboard tabs recessed in transom

- Internal sea strainers for generator & all other sea water pickups
- Racor fuel / water separator filters for main engines & generator
- CAT Platinum Plus extended warranties good until 6/3/18 or 3750 hrs.
- Flush-mounted main engine pick-up sea chests w/ external sea strainers
- PEX plumbing, fresh water system w/ manifold shut-off in Engine Room & forward bilge
- Fire system control w/ automatic & manual discharge & override system located at Console
- Delta T Engine Room ventilation system w/ thermostatic controlled supply & discharge fans
- Fuel transfer & management system, 24v DC pump controlled through Moritz control panels
- Oil changing system for main engines, transmission & generator w/ pump-out line run to Cockpit locker
- Delta T pneumatically controlled Engine Room ventilation dampers, integrated into fire suppression system
- Structural steel engine beds mounted to transverse intermediate bulkheads to isolate torque & vibration / engine noise & ensure drive-train alignment
- Air conditioning - Direct expansion zoned w/ reverse cycle heat for complete climate control throughout the interior & with individual temperature controls for Staterooms & Salon

## Electrical System / Equipment

---

- 24v DC ship's service throughout
- Onan 21.5kW E-QD diesel generator
- Bonded electrical system w/ ground plate
- 110v Outlet in Engine Room on aft bulkhead
- 120v Duplex receptacles w/ GFCI throughout
- Battery parallel system for main engines & generator start
- Instrument panel lights for Flybridge & main electric panel
- Glendinning cablemaster for 50A shore power & additional 50A inlet
- AC Interior lighting dimmers throughout excluding the Companionway
- Batteries, (2) Independent 24v banks mounted in fiberglass storage boxes
- (2) Chargers w/ thermal cutoff & switching system for complete integration
- Voltage stabilizer isolation transformers for more consistent, cleaner voltage
- Engine Room recessed lights, AC & DC w/ switch at Engine Room entrance
- Individual switching for shore (1), shore (2) or generator supply located at main Salon panel
- Overhead Xenon lights recessed in ceiling & rope type decor lights concealed by upholstered valances
- Master electrical control provided via Moritz Octoplex Power Distribution System utilizing a redundant Can Bus control for AC / DC remote breaker electrical systems

## Cockpit / Fishing Equipment

---

- Teak Cockpit
- (6) Rod holders

- Eskimo ice maker
- Fiberglass step box
- Custom chair cover
- Teak covering boards
- Outlets for electric reels
- (6) Clearing rod holders
- Electric grill w/ flip-up lid
- US #9 Teaser reels in hardtop
- Rupp outriggers w/ Clearkote
- (4) Under water lights (new 2015)
- Self bailing Cockpit w/ large scuppers
- (6) Release Marine no-bolt rod holders
- Extended Flybridge overhang for shade
- 6-rod Rocket launcher on Flybridge rail
- Molded-in Transom fish box w/ teak lids
- Cockpit cover from overhang to transom
- Mezzanine seating w/ Sunbrella cushions
- Y-valve for fresh & salt water wash downs
- Recessed LED lights in Flybridge overhang
- Fresh water tank fill from dockside connection
- Stainless steel gas springs on all hatches & lids
- Indirect multi-color rope lighting underneath coaming
- Stereo speakers powered from Salon stereo w/ remote control
- Lazarette hatch w/ access to steering, trim tabs & drain pumps
- Dockside electric connection - 50amp / 220v electric retractable
- One-piece anodized aluminum ladder to Flybridge w/ teak treads
- Release fighting chair w/ rocket launcher, backrest & offset pedestal
- Fresh water wash down w/ hose bib located in cabinet under gunwale
- Engine Room access w/ lift-hatch in Mezzanine & ladder to Engine Room
- Cable TV & telephone connections located in cabinet under starboard forward gunwale
- Recessed refrigerated chill box under-mounted in Salon step for direct access from Cockpit
- Sea water wash down w/ pump in Engine Room & supply at cabinet under forward gunwale
- Dockside water connection w/ pressure reducing valve in port cabinet under gunwale w/ push release door
- Glendinning cablemaster located in starboard cabinet under forward gunwale & one additional 50amp inlet
- Cabinets w/ storage for gaffs & other accessories under port & starboard forward gunwale w/ push release door
- Full-size recessed in-Deck fish boxes & storage, port & starboard side, insulated & removable w/ pump out & drain plate w/ large holes for easy pump out & cleaning

## Exclusions

- Owner's personal gear and items

## Salesman's Comments

---

***Check out this tricked out 60' Viking Convertible! Her teak toe rail, teak eye brow, teak Deck and teak covering boards give her a custom look! Her 60' Viking bottom gives her a fast, dry ride in all sea conditions! Her knowledgeable owner has made constant improvements and all service is up to date! HER OWNERS PLANS HAVE CHANGED - PLEASE MAKE OFFERS!!!***

## Исключения

---

При продаже яхты исключаются личные вещи владельца.

## Отказ от ответственности

---

Компания предоставляет описание судна или яхты добросовестно, но не может гарантировать точность этой информации, а также не ручается за техническое состояние. Покупатель должен проинструктировать своих агентов или оценщиков исследовать представленную информацию более подробно, по собственному желанию. Продажа судна или яхты, изменение цены или снятие с продажи будет происходить без предварительного уведомления.



# ФОТОГРАФИИ

**Profile 2**



**Profile 3 - Forward View**



**Companionway - Clothes Washer & Dryer**



**Master Stateroom 1**



**Master Stateroom 2**



**Master Stateroom 3**



**Master Stateroom 4**



**Master Stateroom 5**



**VIP Stateroom 1**



**VIP Stateroom 2**



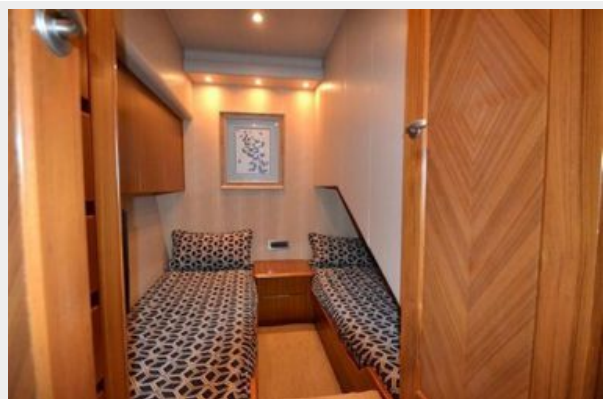
**VIP Stateroom 3**



**VIP Stateroom 4**



**Guest Stateroom, Starboard 1**



**Guest Stateroom, Starboard 2**



**Salon 1**



**Salon 2**



**Salon 3**



**Master Head 1**



**Master Head 2**



**Master Head 3**



**Guest Head, Forward 1**



**Guest Head, Forward 2**



**Guest Head 1**



**Guest Head 2**



**Galley**



**Helm / Electronics & Navigation 1**



### Helm / Electronics & Navigation 3 - Starboard Radio Box

### Helm / Electronics & Navigation 2 - Port Radio Box



### Helm / Electronics & Navigation 4 - Drop Down Box

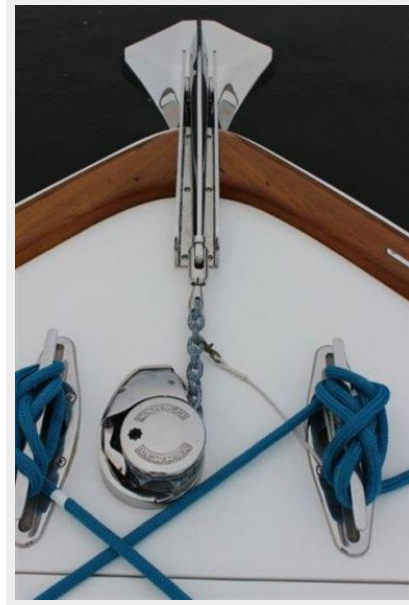


### Helm / Electronics & Navigation 5 - Helm Pod Gauges



### Deck 2 - Custom Stainless Steel Plow Anchor

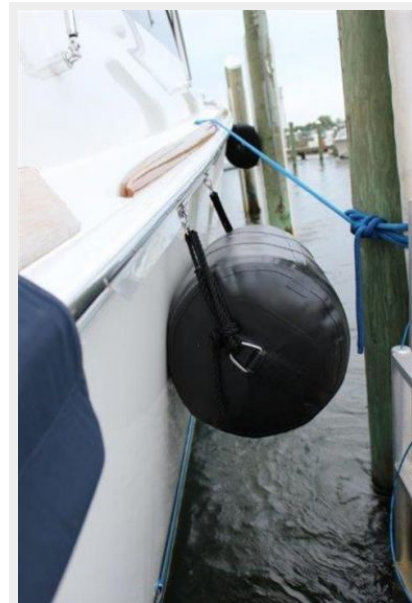
### Deck 1 - Bow



### Deck 3 - View From Bow



### Deck 4 - Custom Fender Rack





**Deck 5 - Helm Chair**



**Deck 6 - Forward Bridge Seating**



**Deck 7 - Port Side Bridge Seating**



**Deck 8 - Starboard Side Bridge Seating**



**Deck 9 - Refrigerated Drink Box & Storage**



**Deck 10 - Bridge Entry Cover**



**Engine & Mechanical Equipment 1 - Engine Room**



**Engine & Mechanical Equipment 2 - Engine Room**



**Engine & Mechanical Equipment 3 - Port Engine**



**Engine & Mechanical Equipment 4 - Port Engine**



**Engine & Mechanical Equipment 5 -  
Starboard Engine**



**Engine & Mechanical Equipment 6 -  
Starboard Engine**



**Engine & Mechanical Equipment 7 - Engine  
Room**



**Engine & Mechanical Equipment 8 - Engine  
Room**



**Engine & Mechanical Equipment 9 - Water  
Maker**



**Engine & Mechanical Equipment 10 - Engine  
Room**



**Engine & Mechanical Equipment 11 - Engine Room**      **Engine & Mechanical Equipment 12 - Engine Room**



**Engine & Mechanical Equipment 13 - Forward Bilge**



**Engine & Mechanical Equipment 14 - Engine Room**



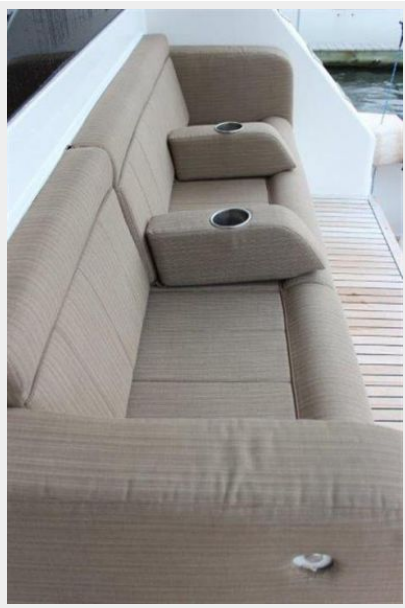
**Electrical System / Equipment - Generator**



**Cockpit / Fishing Equipment 1 - Mezzanine**



**Cockpit / Fishing Equipment 2 - Mezzanine**



**Cockpit / Fishing Equipment 3 - Mezzanine  
Freezer & Storage**



**Cockpit / Fishing Equipment 4 - Custom Rod Cockpit / Fishing Equipment 5 - Custom Rod  
Storage Port**



### Cockpit / Fishing Equipment 7 - Starboard Fish Box



### Cockpit / Fishing Equipment 6 - Port Fish Box w/ Ice Chipper Outlet



### Cockpit / Fishing Equipment 8 - Grill & Tackle Storage



### Cockpit / Fishing Equipment 9 - Electric Grill



**Cockpit / Fishing Equipment 10 - Cockpit**



**Cockpit / Fishing Equipment 11 - Cockpit**



**Cockpit / Fishing Equipment 12 - Cockpit**



**Cockpit / Fishing Equipment 13 - Teaser Reels**



# КОНТАКТЫ

---

Андрей Шестаков (Andrey Shestakov) – ведущий яхтенный брокер отдела продаж яхт и судов компании Shestakov Yacht Sales Inc. Официальный представитель Shestakov Yacht Sales Inc. для русскоговорящих клиентов в центральном офисе компании в Майами/Форт Лодердейл/Флорида/США.

## Контактная информация

---

Email: [andrey@shestakovyachtsales.com](mailto:andrey@shestakovyachtsales.com)

Web: [shestakovyachtsales.com](http://shestakovyachtsales.com)

## Телефоны

---

Краснодарский край: **+7(918)465-66-44**

США, Майами, Флорида: **+1(954)274-4435**

## Время работы

---

Понедельник – Суббота: **9:00 - 21:00**  
EDT

Воскресенье: **Закрито**

## Адрес

---



Harbour Towne Marina, 850 NE 3rd St,  
STE 213, Dania, FL 33004