

YELLOWFIN 36 — YELLOWFIN



Builder: [YELLOWFIN](#)

LOA: 36' 0" (10.97m)

Year Built: 2009

Beam: 10' 0" (3.05m)

Model: Sport Fisherman

Price: PRICE ON APPLICATION

Location: United States

Our experienced yacht broker, Andrey Shestakov, will help you choose and buy a yacht that best suits your needs **Yellowfin 36 — YELLOWFIN** from our catalogue. Presently, at Shestakov Yacht Sales Inc., we have a wide variety of yachts available on our sale's list. We also work in close contact with all the big yacht manufacturers from all over the world.

If you would like to buy a yacht **Yellowfin 36 — YELLOWFIN** or would like help answering any questions concerning purchasing, selling or chartering a yacht, please call **+1(954)274-4435**

TABLE OF CONTENTS

TABLE OF CONTENTS	2
SPECIFICATIONS	3
Overview	3
Basic Information	3
Dimensions	3
Speed, Capacities and Weight	3
Hull and Deck Information	3
Engine Information	4
DETAILED INFORMATION	5
Yellowfin 36	5
Exclusions	6
Disclaimer	6
PHOTOS	7
CONTACTS	11
Contact details	11
Telephones	11
Office hours	11
Address	11

SPECIFICATIONS

Overview

Great opportunity to own this exceptionally clean and well cared for 36 Yellowfin. She is lift-stored with NO bottom paint. Her 2016 updates include a re-powering with triple 2015 350hp Verado Four Strokes w/ warranty until March 2021, C zone switches, Washdown pump, Bilge pumps, Fusion Stereo with JL subs and amps, Mercury Vessel view 7, SS Props, LED Lights and Raw water wash down pump.

She features custom tower with second station, Yellowfin generation 3 fuel tanks, Dual Raymarine G series 15 inch Screens, Sounder, HD radar, XM weather, Autopilot, 2015 Rupp Z30 bases with Marsh Tacky carbon fiber outriggers, 4 tuna tubes, helm seat and transom live wells, custom console with center helm, under water lights, Coffin box, triple axle trailer and much more.

Basic Information

Category: Sport Fisherman

Sub Category: Center Console

Model Year: 2009

Year Built: 2009

Country: United States

Dimensions

LOA: 36' 0" (10.97m)

Beam: 10' 0" (3.05m)

Speed, Capacities and Weight

Displacement: 9500 Pounds

Water Capacity: 30 Gallons

Fuel Capacity: 525 Gallons

Hull and Deck Information

Hull Material: Fiberglass

Engine Information

Engines: 3

Manufacturer: Mercury

Model: Verado 4S

Engine Type: Outboard

Fuel Type: Gas/Petrol

DETAILED INFORMATION

Yellowfin 36

Hull, Deck & Engine

- 2016 June - Repowered with triple 2015 350hp Mercury Verado's with 110hrs (standard 3-year Warranty with an additional 2 years of Gold Level Warranty)
- 2014 Coaming bolsters, helm seat, console seat and aft console seat cushions
- 2016 C Zone switches
- 2016 Washdown
- 2016 Bilge pumps
- 2016 Mercury Vessel view 7 Display
- 2016 SS Props
- 2016 LED Lights
- 2016 Raw water washdown pump
- Lift kept no bottom paint
- 2015 Rupp Z30 bases with Marsh Tacky carbon fiber outriggers
- Center Rigger
- Custom Tower with second station- Set up for to fold down for trailering, Blue undertone on hard top and buggy top.
- 4 tuna tubes w/ separate live well pump
- Helm seat and transom live wells with 2 pumps
- Custom console with center helm
- Head in Console
- Helm seat with pull out tackle drawers each side
- Under water lights
- Coffin box
- Garelick ladder
- Anchor windless
- Courtesy lights
- 22 Gunnel mounted rod holders
- Pancake teaser reels
- 3 Optima Batteries, one for each engine and two house, with battery switches
- Battery Charger
- 2 12 Volt electric reel outlets
- AmeraTrail aluminum triple axle trailer

Electronics

- 2 Raymarine G series 15 inch MFD at lower helm with black box controls
- Raymarine E80 - Tower

- Raymarine Sounder with two transducers
- Raymarine HD Radar
- XM weather
- Garmin GHC10 autopilot
- 2 Raymarine 218 VHF's
- 2016 Fusion Radio, with JL speakers, subs and amps

Performance

Sea trial with 4 adults and full fuel 525gals, Fuel burn at the cruise number ranged from 1-1.2 MPG

6000 RPM 61 MPH- Top End

5250 RPM 52 MPH

4550 RPM 45 MPH

3900 RPM 37 MPH

3500 RPM 33 MPH

Exclusions

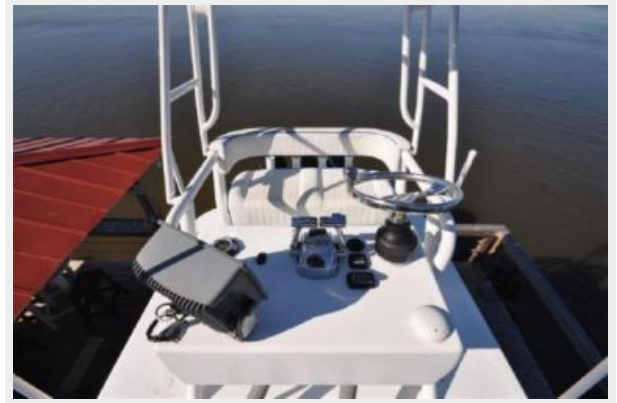
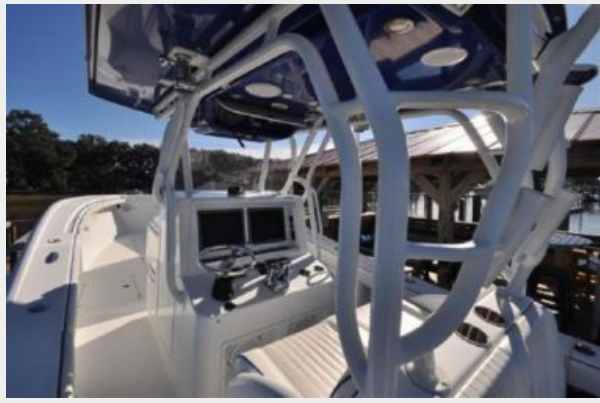
Owner's personal belongings.

Disclaimer

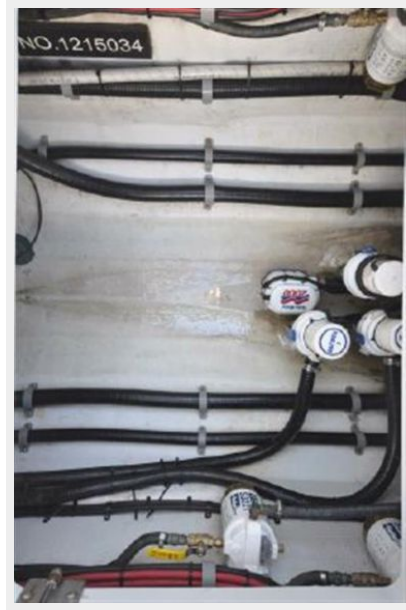
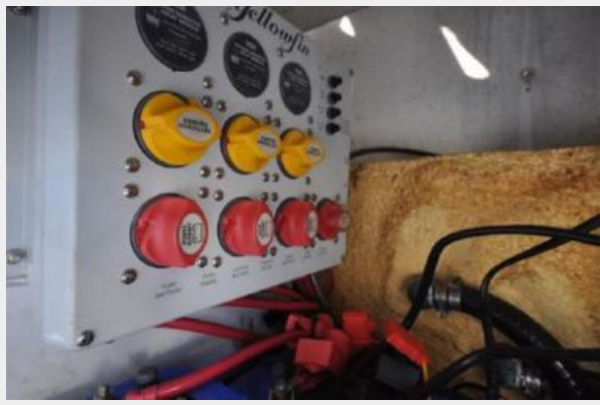
The Company offers the details of this vessel or yacht in good faith but cannot guarantee or warrant the accuracy of this information nor warrant the condition of the vessel. A buyer should instruct his representatives, agents, or his surveyors, to investigate such details as the buyer desires validated. This vessel or yacht is offered subject to prior sale, price change, or withdrawal without notice.

PHOTOS









CONTACTS

Andrey Shestakov, leading yacht broker of the sales department of Shestakov Yacht Sales Inc. Shestakov Yacht Sales Inc., the official representative of the Miami/Fort Lauderdale FL headquarters.

Contact details

Email: andrey@shestakovyachtsales.com

Web: shestakovyachtsales.com/en/

Telephones

USA: +1(954)274-4435

Office hours

Monday – Saturday: **9:00 - 21:00** EDT

Sunday: **closed**

Address



Harbour Towne Marina, 850 NE 3rd St,
STE 213, Dania, FL 33004