

UNNAMED — PARKER MARINE



Builder: PARKER MARINE

Year Built: 2014

Model: Sport Fisherman

Price: PRICE ON APPLICATION

Location: United States

LOA: 25' 4" (7.72m)

Beam: 9' 6" (2.90m)

Max Draft: 1' 5" (0.43m)

Cruise Speed: 32 Kts. (37 MPH)

Max Speed: 44 Kts. (51 MPH)

Our experienced yacht broker, Andrey Shestakov, will help you choose and buy a yacht that best suits your needs **unnamed — PARKER MARINE** from our catalogue. Presently, at Shestakov Yacht Sales Inc., we have a wide variety of yachts available on our sale's list. We also work in close contact with all the big yacht manufacturers from all over the world.

If you would like to buy a yacht **unnamed — PARKER MARINE** or would like help answering any questions concerning purchasing, selling or chartering a yacht, please call **+1(954)274-4435**

TABLE OF CONTENTS

TABLE OF CONTENTS	2
SPECIFICATIONS	3
Overview	3
Basic Information	3
Dimensions	3
Speed, Capacities and Weight	3
Accommodations	3
Hull and Deck Information	4
Engine Information	4
DETAILED INFORMATION	5
Electronics	5
Inside Equipment	5
Outside Equipment/Extras	5
Additional Equipment	5
Features	5
Disclaimer	6
Exclusions	6
Disclaimer	6
PHOTOS	8
CONTACTS	16
Contact details	16
Telephones	16
Office hours	16
Address	16

SPECIFICATIONS

Overview

Kept Indoors on her trailer since new, Yamaha 4 stroke 300hp engine with 136 hrs (warranty remaining), Cockpit Helm Station, Cockpit Bimini top (removable), Anchor Windlass, Fresh water system. Garmin HD Radar/Chartplotter/Fishfinder, Garmin VHF100, Infinity stereo (Bluetooth compatible), remote spotlight. Tandem axle Galv Roller style Trailer all included.

Basic Information

Category: Sport Fisherman

Model Year: 2014

Year Built: 2014

Country: United States

Dimensions

LOA: 25' 4" (7.72m)

Beam: 9' 6" (2.90m)

Max Draft: 1' 5" (0.43m)

Speed, Capacities and Weight

Cruise Speed: 32 Kts. (37 MPH)

Cruise Speed RPM: 4500 Kts.

Max Speed: 44 Kts. (51 MPH)

Max Speed RPM: 5800 Kts.

Displacement: 5800 Pounds

Water Capacity: 15 Gallons

Holding Tank: 6 Gallons

Fuel Capacity: 200 Gallons

Accommodations

Total Cabins: 1

Total Berths: 2

Total Heads: 1

Hull and Deck Information

Hull Material: Fiberglass

Engine Information

Engines: 1

Manufacturer: Yamaha

Model: F300XCA

Engine Type: Outboard

Fuel Type: Gas/Petrol

DETAILED INFORMATION

Electronics

- Depthsounder - Thru Hull Transducer, fishfinder
- Radio - Infinity Stereo, Bluetooth compatible with USB input
- Cockpit Speakers
- Radar - 48 mile HD Radar
- Navigation Center - Garmin 4212 multi-function display
- Compass - Ritchie Powerdamp
- GPS - with Chartplotter
- VHF - Garmin 100

Inside Equipment

- Electric Bilge Pump
- Chemical Head - porta potti

Outside Equipment/Extras

- Cockpit Cushions - Coaming Pads
- Swimming Ladder - removable dive ladder
- Bimini Top - Removable cockpit Bimini (not shown in photos)

Additional Equipment

- Road Trailer - '14 EZ Loader tandem axle Roller Trailer, 10600 GVWR, LED Lights, brakes both axles

Features

- Forward Cabin (76"l,72"w,44" hdrm over bunk) with cushions and porta-potti
- Pilothouse (59"l, 82"w,76" hdrm) with seating for four
- Lockable Pilothouse Door
- Compass
- Windshield Wipers (pands)
- Dual Trumpet Horn
- Pulpit with roller and Molded Anchor Locker on Foredeck
- Stainless Steel Handrails on top and sides of Pilothouse and top of Trunk Cabin

- Stainless Steel One-Piece, Welded Bow Rail
- Stainless Steel Deck Hardware [10" Cleats: Bow, Spring], Stern (8" pull-up)
- Stainless Steel Rodholders (2 pair)
- Hydraulic Steering with Stainless Steel Wheel
- Trim Tabs with Instant Retract
- Custom Accessory Panel
- Navigation Lights
- Cockpit Lighting
- Bilge Pump with float switch
- Fresh Water System
- Rod Storage and Toe Rails under gunwale
- Full Transom with single bracket (w/swim platform and dive ladder receiver) and 268 qt insulated fishbox with "drop-in" storage boxes
- Self Bailing Cockpit (108"l, 88"w, 24.5"d) with nonskid surface
- Hull and Deck Joint Thru-Bolted (S/S Fasteners)
- Heavy Duty Sport Rub Rail
- Flotation Foam
- 5 Year Transferable Limited Hull Warranty

Disclaimer

While we attempt to display current and accurate data, this listing may not reflect the most recent transactions or may contain occasional data entry errors. Selling agent makes no warranties, express or implied, regarding the content or availability of the products described herein. All inventory listed is subject to availability and prior sale. Please consult selling agent for details. Prices are quoted for the USA only and may not include transportation, taxes, or other applicable charges. Photographs may be representative only and may vary somewhat from the actual items offered for sale. We will not be responsible for inaccurate data obtained from our site. Please check with your local dealer to ensure that you have the latest information available. Information on this web site could include technical inaccuracies or typographical errors. Changes may be periodically made to the information or the products herein. Questions or comments regarding these policies may be directed to website hosting agent.

Exclusions

Owner's personal belongings.

Disclaimer

The Company offers the details of this vessel or yacht in good faith but cannot guarantee or warrant the accuracy of this information nor warrant the condition of the vessel. A buyer should instruct his representatives, agents, or his surveyors, to investigate such details as the buyer

desires validated. This vessel or yacht is offered subject to prior sale, price change, or withdrawal without notice.

PHOTOS

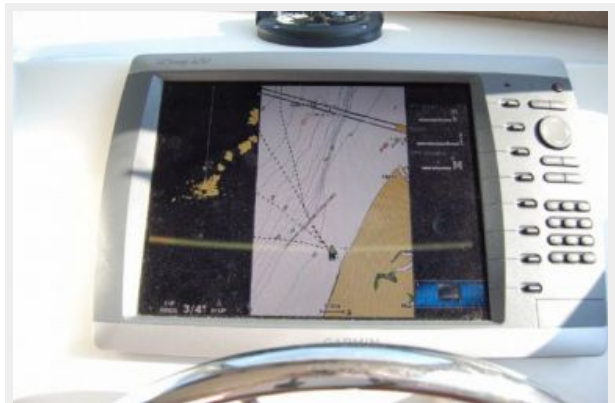


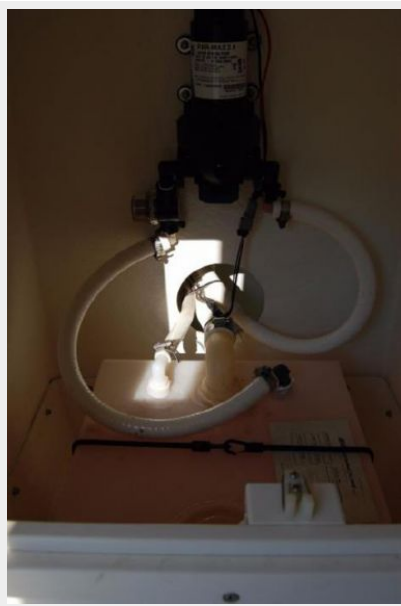
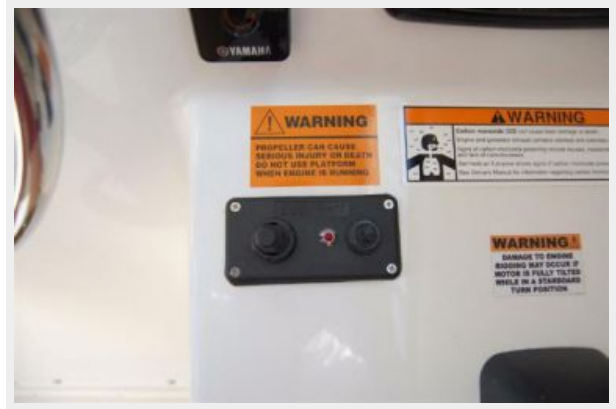














CONTACTS

Andrey Shestakov, leading yacht broker of the sales department of Shestakov Yacht Sales Inc. Shestakov Yacht Sales Inc., the official representative of the Miami/Fort Lauderdale FL headquarters.

Contact details

Email: andrey@shestakovyachtsales.com

Web: shestakovyachtsales.com/en/

Telephones

USA: +1(954)274-4435

Office hours

Monday – Saturday: **9:00 - 21:00** EDT

Sunday: **closed**

Address



Harbour Towne Marina, 850 NE 3rd St,
STE 213, Dania, FL 33004