

JUST US — GRAND BANKS



Builder: GRAND BANKS

Year Built: 1978

Model: Trawler Yacht

Price: PRICE ON APPLICATION

LOA: 36' (10.97mm)

Beam: 12.33

Min Draft: 4' (1.22mm)

Max Draft: 4' (1.22mm)

Cruise Speed: 7 Knots Kts. (8 MPH)

Max Speed: 9 Knots Kts. (10 MPH)

Our experienced yacht broker, Andrey Shestakov, will help you choose and buy a yacht that best suits your needs **Just Us — GRAND BANKS** from our catalogue. Presently, at Shestakov Yacht Sales Inc., we have a wide variety of yachts available on our sale's list. We also work in close contact with all the big yacht manufacturers from all over the world.

If you would like to buy a yacht **Just Us — GRAND BANKS** or would like help answering any questions concerning purchasing, selling or chartering a yacht, please call **+1(954)274-4435**

TABLE OF CONTENTS

| | |
|--|----|
| TABLE OF CONTENTS | 2 |
| SPECIFICATIONS | 5 |
| Overview | 5 |
| Basic Information | 5 |
| Dimensions | 5 |
| Speed, Capacities and Weight | 5 |
| Accommodations | 5 |
| Hull and Deck Information | 6 |
| Engine Information | 6 |
| PHOTOS | 7 |
| 36' Grand Banks port aft profile Previous Next | 7 |
| 36' Grand Banks aft profile | 7 |
| 36' Grand Banks anchor windlass | 7 |
| 36' Grand Banks foredeck | 7 |
| 36' Grand Banks port side deck photo1 | 8 |
| 36' Grand Banks port side deck photo2 | 8 |
| 36' Grand Banks starboard side deck photo1 | 8 |
| 36' Grand Banks starboard side deck photo2 | 8 |
| 36' Grand Banks flybridge forward | 9 |
| 36' Grand Banks flybridge aft | 9 |
| 36' Grand Banks flybridge port | 9 |
| 36' Grand Banks flybridge starboard | 9 |
| 36' Grand Banks flybridge helm | 9 |
| 36' Grand Banks flybridge BBQ grill | 9 |
| 36' Grand Banks mast hinge | 10 |
| 36' Grand Banks trunk cabin forward | 10 |
| 36' Grand Banks trunk cabin aft | 10 |
| 36' Grand Banks aftdeck | 10 |

| | |
|---|----|
| 36' Grand Banks aftdeck port | 10 |
| 36' Grand Banks aftdeck starboard | 10 |
| 36' Grand Banks swimplatform | 11 |
| 36' Grand Banks salon forward | 11 |
| 36' Grand Banks salon aft | 11 |
| 36' Grand Banks salon port | 11 |
| 36' Grand Banks salon starboard | 11 |
| 36' Grand Banks salon port aft seating | 11 |
| 36' Grand Banks salon starboard aft seating | 12 |
| 36' Grand Banks galley | 12 |
| 36' Grand Banks lower helm photo1 | 12 |
| 36' Grand Banks lower helm photo2 | 12 |
| 36' Grand Banks lower helm electronics | 12 |
| 36' Grand Banks master stateroom | 12 |
| 36' Grand Banks master stateroom starboard | 13 |
| 36' Grand Banks master stateroom port | 13 |
| 36' Grand Banks master stateroom head | 13 |
| 36' Grand Banks master stateroom forward | 13 |
| 36' Grand Banks guest stateroom | 14 |
| 36' Grand Banks guest stateroom port | 14 |
| 36' Grand Banks guest stateroom head | 14 |
| 36' Grand Banks guest stateroom starboard | 14 |
| 36' Grand Banks engine room access | 14 |
| 36' Grand Banks main engine photo1 | 14 |
| 36' Grand Banks Racor fuel filter | 15 |
| 36' Grand Banks main engine photo2 | 15 |
| 36' Grand Banks water heater | 15 |
| 36' Grand Banks generator | 15 |
| CONTACTS | 16 |

| | |
|-----------------|----|
| Contact details | 16 |
| Telephones | 16 |
| Office hours | 16 |
| Address | 16 |

SPECIFICATIONS

Overview

Just Us is a classic 1978 36' Grand Banks. She offers a single Ford Lehman 120 hp main engine, 7.5 kW Westerbeke generator, Vacuflush heads, a 2 stateroom, 2 head layout and a hinged mast to make her an affordable and comfortable Great Loop candidate.

Basic Information

Category: Trawler Yacht

Sub Category: Aft Cabin

Model Year: 1978

Year Built: 1978

Dimensions

LOA: 36' (10.97mm)

LWL: 35' 2" (10.72mm)

Beam: 12.33

Min Draft: 4' (1.22mm)

Max Draft: 4' (1.22mm)

Speed, Capacities and Weight

Cruise Speed: 7 Knots Kts. (8 MPH)

Max Speed: 9 Knots Kts. (10 MPH)

Water Capacity: 170 Gallons

Holding Tank: 36 Gal Gallons

Fuel Capacity: 430 Gal Gallons

Accommodations

Total Cabins: 2

Total Berths: 4

Sleeps: 5

Total Heads: 2

Hull and Deck Information

Hull Material: Fiberglass

Deck Material: Teak

Hull Configuration: Modified V-Hull

Engine Information

Engines: 1

Manufacturer: Ford Lehman

Engine Type: Inboard

Fuel Type: Diesel

PHOTOS

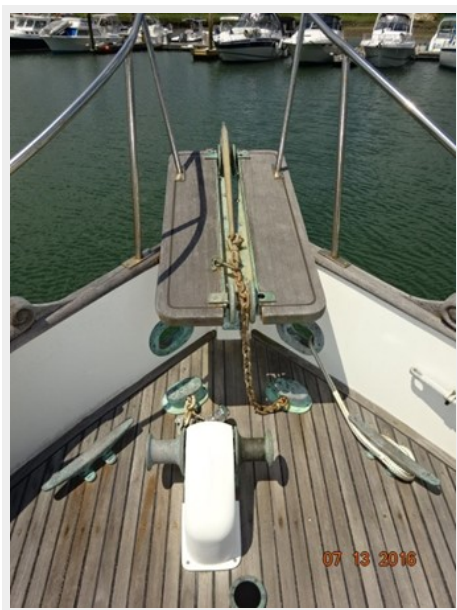
36' Grand Banks port aft profile Previous
Next



36' Grand Banks aft profile



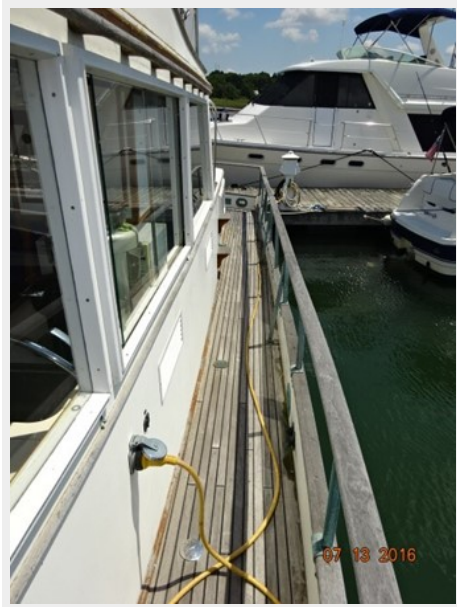
36' Grand Banks anchor windlass



36' Grand Banks foredeck



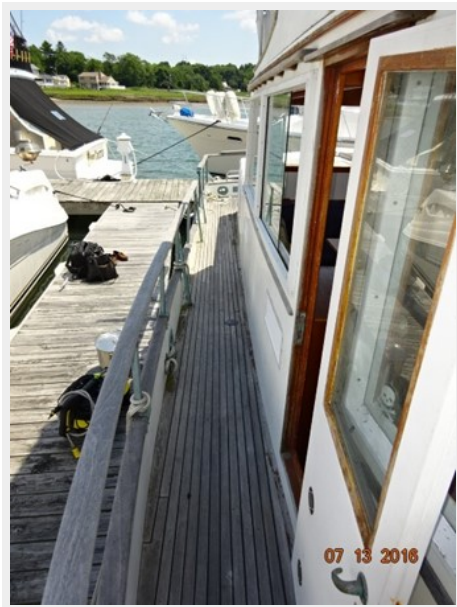
36' Grand Banks port side deck photo1



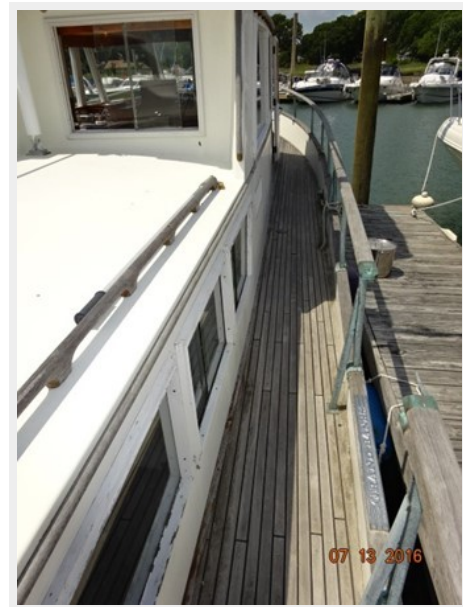
36' Grand Banks port side deck photo2



36' Grand Banks starboard side deck photo1



36' Grand Banks starboard side deck photo2



36' Grand Banks flybridge forward



36' Grand Banks flybridge aft



36' Grand Banks flybridge port



36' Grand Banks flybridge starboard



36' Grand Banks flybridge helm



36' Grand Banks flybridge BBQ grill



36' Grand Banks mast hinge



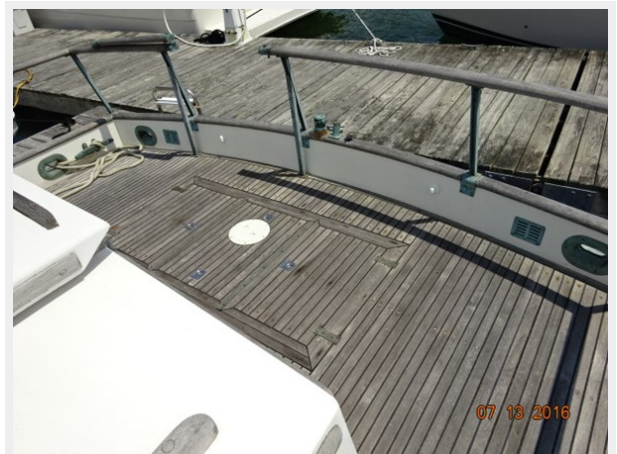
36' Grand Banks trunk cabin forward



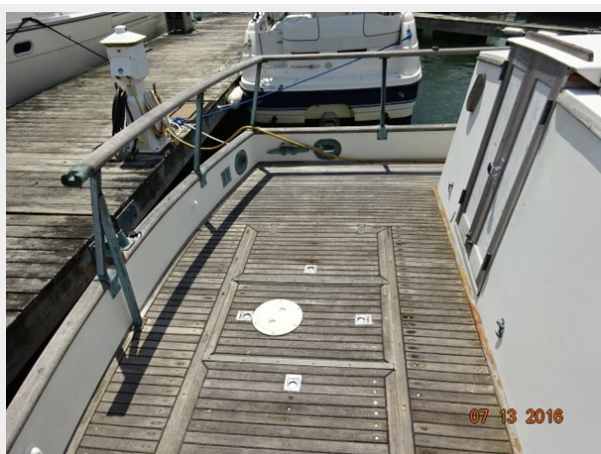
36' Grand Banks trunk cabin aft



36' Grand Banks aftdeck



36' Grand Banks aftdeck port



36' Grand Banks aftdeck starboard



36' Grand Banks swimplatform



36' Grand Banks salon forward



36' Grand Banks salon aft



36' Grand Banks salon port



36' Grand Banks salon starboard



36' Grand Banks salon port aft seating



36' Grand Banks salon starboard aft seating



36' Grand Banks galley



36' Grand Banks lower helm photo1



36' Grand Banks lower helm photo2



36' Grand Banks lower helm electronics



36' Grand Banks master stateroom



36' Grand Banks master stateroom port



36' Grand Banks master stateroom starboard



36' Grand Banks master stateroom head

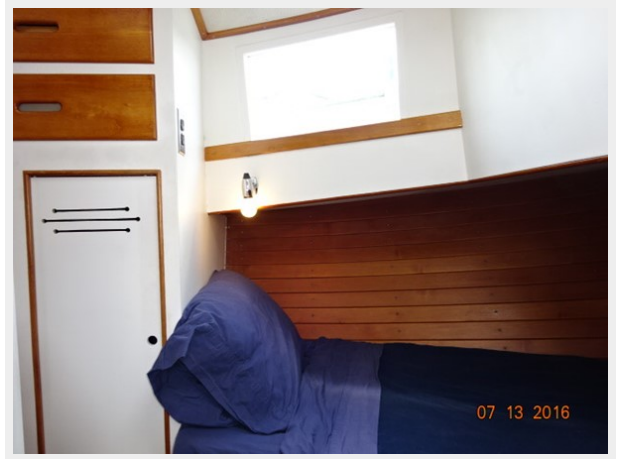
36' Grand Banks master stateroom forward



36' Grand Banks guest stateroom



36' Grand Banks guest stateroom port



36' Grand Banks guest stateroom head



36' Grand Banks guest stateroom starboard



36' Grand Banks engine room access



36' Grand Banks main engine photo1



36' Grand Banks main engine photo2



36' Grand Banks Racor fuel filter



36' Grand Banks water heater



36' Grand Banks generator



CONTACTS

Andrey Shestakov, leading yacht broker of the sales department of Shestakov Yacht Sales Inc. Shestakov Yacht Sales Inc., the official representative of the Miami/Fort Lauderdale FL headquarters.

Contact details

Email: andrey@shestakovyachtsales.com

Web: shestakovyachtsales.com/en/

Telephones

USA: +1(954)274-4435

Office hours

Monday – Saturday: **9:00 - 21:00** EDT

Sunday: **closed**

Address



Harbour Towne Marina, 850 NE 3rd St,
STE 213, Dania, FL 33004