

FAIRHAVEN — CSY



Builder: CSY

Year Built: 1978

Model: Center Cockpit

Price: PRICE ON APPLICATION

Location: United States

LOA: 44' 0" (13.41m)

Beam: 13' 4" (4.06m)

Max Draft: 6' 6" (1.98m)

Cruise Speed: 6 Kts. (7 MPH)

Our experienced yacht broker, Andrey Shestakov, will help you choose and buy a yacht that best suits your needs FairHaven — CSY from our catalogue. Presently, at Shestakov Yacht Sales Inc., we have a wide variety of yachts available on our sale's list. We also work in close contact with all the big yacht manufacturers from all over the world.

If you would like to buy a yacht FairHaven — CSY or would like help answering any questions concerning purchasing, selling or chartering a yacht, please call +1(954)274-4435

TABLE OF CONTENTS

TABLE OF CONTENTS	2
SPECIFICATIONS	3
Overview	3
Basic Information	3
Dimensions	3
Speed, Capacities and Weight	4
Accommodations	4
Hull and Deck Information	4
Engine Information	4
DETAILED INFORMATION	5
Accommodations	5
Galley	5
Electrical Equipment	5
Electronics	5
Deck & Hull	6
Sails and Rigging	6
Mechanical	6
Exclusions	6
Disclaimer	7
PHOTOS	8
CONTACTS	15
Contact details	15
Telephones	15
Office hours	15
Address	15

SPECIFICATIONS

Overview

Highly regarded CSY 44 Center Cockpit Walkover layout with ICW-friendly cutter rig. This boat is well updated, in excellent running condition, and ready to go. Features updated wiring, updated plumbing, new tanks, custom stainless arch & davits over transom, custom swim platform, new canvas and much more. *Fairhaven* is set up for living aboard with Espar heat, AC, excellent refrigeration, and a large stall shower. **She is ready to go... Load your gear and head South.**

The CSY 44 was built to withstand the rigors of the charter industry in the late 70s. As such it is heavily built to Lloyds of London requirements with a solid fiberglass hull, *and* a solid fiberglass deck. No wood coring is used in construction, which is often the downfall of older boats. The 44 is offshore capable, a near perfect island cruiser and a terrific liveaboard. The owners of *Fairhaven* have moved to Colorado and have priced this boat to sell.

Basic Information

Category: Center Cockpit

Sub Category: Cutter

Model Year: 1978

Year Built: 1978

Country: United States

Dimensions

LOA: 44' 0" (13.41m)

LWL: 36' 4" (11.07m)

Beam: 13' 4" (4.06m)

Max Draft: 6' 6" (1.98m)

Clearance: 56' 0" (17.07m)

Speed, Capacities and Weight

Cruise Speed: 6 Kts. (7 MPH)

Displacement: 33000 Pounds

Water Capacity: 100 Gallons

Holding Tank: 40 Gallons

Fuel Capacity: 90 Gallons

Accommodations

Total Cabins: 2

Hull and Deck Information

Hull Material: Fiberglass

Hull Configuration: Long Keel

Hull Color: White

Engine Information

Engines: 1

Manufacturer: Yanmar

Model: 4JH-HTE

Engine Type: Inboard

Fuel Type: Diesel

DETAILED INFORMATION

Accommodations

Fairhaven features the roomy walkover center cockpit layout with two private kingsize staterooms, perfect for two couples, families, or off-watch privacy. Seven overhead hatches (including two butterfly hatches) and 10 opening bronze portlights let in plenty of light and air.

Very Large V-berth forward with storage under and locker/drawer storage aft to starboard.

Aft to port is a large head with private access to forward cabin, and entry to the shower stall. Just aft is the large private shower stall with door to head, and another to main cabin. Across to starboard are large hanging lockers

The Main Cabin features a large fore & aft dinette arrangement to port with a small settee to starboard. The dining table, which has substantial built-in storage, drops down to form a large berth. Ample storage in outboard lockers and under settees. Headroom in the main cabin is approximately 6'7".

The Nav Station is aft to starboard and the large galley is aft to port. Across the galley to starboard, aft of the nav station is a large ice box with 12V refrigeration, and a small quarterberth outboard.

Access to the private aft cabin is from the cockpit through a private entrance. The aft cabin features a king-sized centerline berth and a private ensuite head with a new 40 gallon holding tank. Massive storage capacity can be found in the aft cabin.

Galley

Spacious secure galley to port. Updated 3-burner Force 10 LPG stove w/ oven Danfoss CU-100 Cold Machine Refrigeration, easily makes ice. Massive ice box to starboard of galley. H/C pressure water w/ 6 gallon water heater. Manual water pump GE Microwave oven

Electrical Equipment

Three Battery Banks: 1 8D house battery 1 dedicated starter battery 2 Multipurpose batteries
Boat re-wired in 2011 w/ new tinned-copper wire. 30 amp shore power system Pro Mariner
Battery Charger Galvonic Isolator Polarity indicator

Electronics

Garmin 720C chartplotter at helm Icom VHF model IC-M302 at helm Icom SSB model IC-M700

Pro w/ isolated backstay antenna (needs tuner) Furuno Radar model 821 w/ Nav Station display Navman instruments model 3100 in cockpit (Speed/Depth/wind) Heavy duty hydraulic Simrad Autopilot model AP24 C.A.R.D. Radar Detector/Reflector model 60 Ritchie Compass at helm

Deck & Hull

Solid fiberglass hull painted white. Long fin keel with encapsulated ballast, and skeg-hung rudder. No visual evidence of blistering. Bottom sealed with an Epoxy barrier coat. Anti-fouling paint applied 6/16, dark blue. Solid fiberglass deck painted white, no coring. Deck paint needs touch up in isolated areas. Bowsprit w/ teak seat forward of stay. Ground Tackle: Mantus 65# anchor on 20 feet of 3/8 BBB chain and 250' of 3/4 nylon. Additional anchors: CQR 35#, Danforth 35# Additional 200' of 5/16" chain in locker Lewmar V3 GD heavy duty windlass with gypsy & capstan, **new 2016**, not yet installed Deck features 2 butterfly hatches **Deck Equipment:** New bottomsiders cockpit cushions Stainless Steel arch & radar tower over transom with built-in dinghy davits. Custom swim platform (fabricated with Marine Starboard) with custom steps up to aft deck. SST marine barbeque on stern rail Large propane locker fixed to aft deck 4-man Zodiac liferaft mounted on aft deck (needs servicing) Lifesling MOB module Outboard motor bracket on stern rail

Sails and Rigging

Aluminum keel stepped mast Cutter rig Profurl furlers for both jib and staysail. The headstay wire, swage fittings, and Profurl extrusion was replaced in 2008 after being damaged during a haulout. Standing rigging updated All sheets and furler lines lead aft to cockpit Winches: Lewmar 44 s/t 2-sp primaries Lewmar **Sails:** (all sails appear to be in very good condition) Dacron Main Dacron Genoa Dacron Staysail **Canvas:** Large custom Sunbrella Dodger with integrated Stainless handholds Custom covers for stratoglass Color-matched sunbrella sail cover

Mechanical

Engine

Good-running Yanmar 4JH-HTE 66hp turbo diesel (believed to be mid 90s upgrade) recent service: New Turbo, fuel injectors, fuel pump, water pump recent 100 amp alternator spacious engine room under cockpit (accessed through cockpit hatch) for easy servicing

Mechanical Espar D4 Airtronic diesel heater with push button thermostat Marine Air A/C ducted to main cabin

Exclusions

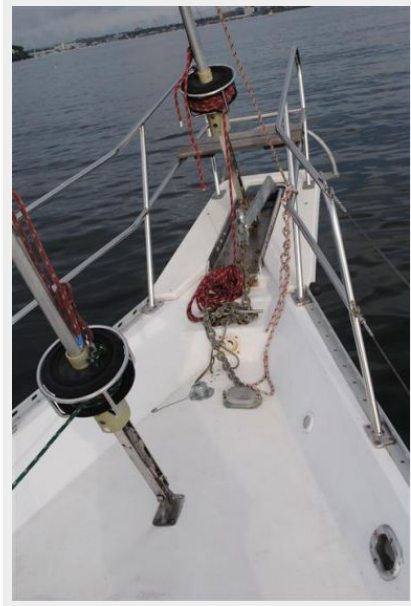
Owner's personal belongings.

Disclaimer

The Company offers the details of this vessel or yacht in good faith but cannot guarantee or warrant the accuracy of this information nor warrant the condition of the vessel. A buyer should instruct his representatives, agents, or his surveyors, to investigate such details as the buyer desires validated. This vessel or yacht is offered subject to prior sale, price change, or withdrawal without notice.

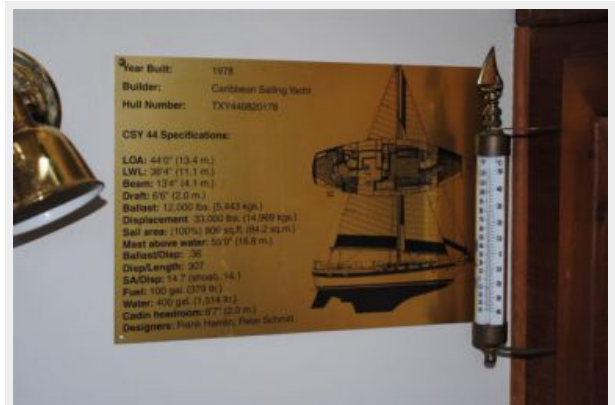
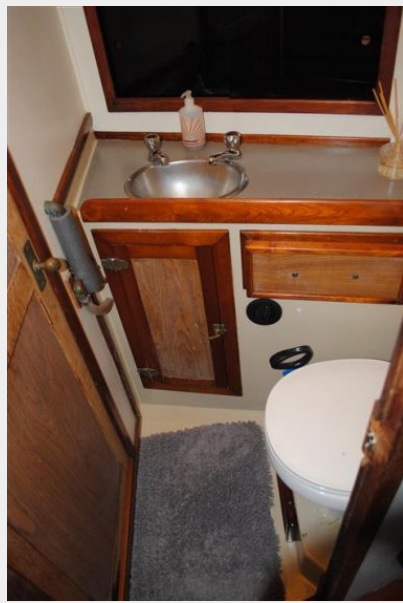
PHOTOS

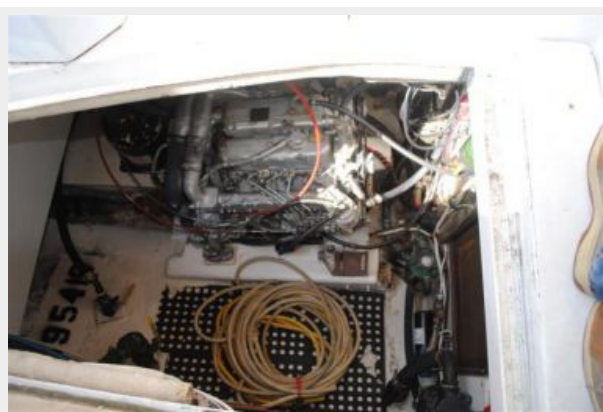














CONTACTS

Andrey Shestakov, leading yacht broker of the sales department of Shestakov Yacht Sales Inc. Shestakov Yacht Sales Inc., the official representative of the Miami/Fort Lauderdale FL headquarters.

Contact details

Email: andrey@shestakovyachtsales.com

Web: shestakovyachtsales.com/en/

Telephones

USA: +1(954)274-4435

Office hours

Monday – Saturday: **9:00 - 21:00** EDT

Sunday: **closed**

Address



Harbour Towne Marina, 850 NE 3rd St,
STE 213, Dania, FL 33004