

## WHITE GOLD — SUNSEEKER



**Builder:** SUNSEEKER

**Year Built:** 2006

**Model:** Motor Yacht

**Price:** PRICE ON APPLICATION

**Location:** United States

**LOA:** 82' 0" (24.99m)

**Beam:** 20' 3" (6.17m)

**Max Draft:** 5' 7" (1.70m)

Our experienced yacht broker, Andrey Shestakov, will help you choose and buy a yacht that best suits your needs **White Gold — SUNSEEKER** from our catalogue. Presently, at Shestakov Yacht Sales Inc., we have a wide variety of yachts available on our sale's list. We also work in close contact with all the big yacht manufacturers from all over the world.

If you would like to buy a yacht **White Gold — SUNSEEKER** or would like help answering any questions concerning purchasing, selling or chartering a yacht, please call **+1(954)274-4435**

---

# TABLE OF CONTENTS

---

TABLE OF CONTENTS	2
SPECIFICATIONS	4
Overview	4
Basic Information	4
Dimensions	4
Speed, Capacities and Weight	4
Accommodations	4
Hull and Deck Information	5
Engine Information	5
DETAILED INFORMATION	6
Features	6
Key Features & Option upgrades	7
Manufacturer Provided Description	8
Main deck level	8
Accommodations	9
Galley	10
Lower Helm	10
Fly Bridge	11
Aft Cockpit Area	12
Forward Deck Area	12
Engine Room	13
Electrical	14
Construction	14
Principal Features	14
Exclusions	15
Disclaimer	15
PHOTOS	16
CONTACTS	38

---

---

Contact details	38
Telephones	38
Office hours	38
Address	38

---

# SPECIFICATIONS

---

## Overview

---

New to Market! Beautiful 2006 82' Sunseeker Yacht which will surely impress. "White Gold" is Meticulously maintained by a fulltime captain and mate that take exceptional pride in their yacht. The gelcoat shines, the engine room is spotless, and the interior shows like new. Please see full listing for complete specifications, option upgrades, video, and photos.

**Duty Paid! Trades Welcome!**

**1000 Hour Service Completed 12/2016**

**New carpet in Salon 12/2016 New flat screen TVs throughout**

Call today schedule a viewing because she will not last.

## Basic Information

---

**Category:** Motor Yacht

**Model Year:** 2006

**Year Built:** 2006

**Country:** United States

## Dimensions

---

**LOA:** 82' 0" (24.99m)

**LWL:** 64' 8" (19.71m)

**Beam:** 20' 3" (6.17m)

**Max Draft:** 5' 7" (1.70m)

## Speed, Capacities and Weight

---

**Displacement:** 121000 Pounds

**Water Capacity:** 396 Gallons

**Fuel Capacity:** 1717 Gallons

## Accommodations

---

**Total Cabins:** 4

**Total Heads:** 3

---

## Hull and Deck Information

---

**Hull Material:** Fiberglass

## Engine Information

---

**Engines:** 2

**Manufacturer:** CAT

**Model:** C-32

**Engine Type:** Inboard

**Fuel Type:** Diesel

---

# DETAILED INFORMATION

---

## Features

---

### Inside Equipment

- Stern Thruster
- Dishwasher
- Bow Thruster
- Electric Bilge Pump
- Oven
- Microwave Oven
- Air Compressor
- Marine Head
- Air Conditioning
- Heating
- Hot Water
- Refrigerator
- Fresh Water Maker
- Battery Charger

### Electrical Equipment

- Shore Power Inlet
- Inverter

### Outside Equipment/Extras

- Teak Cockpit
- Cockpit Shower
- Teak Sidedecks
- Gangway
- Davit(s)
- Hydraulic Gangway
- Lifteraft
- Cockpit Cushions
- Cockpit Table
- Swimming Ladder

### Covers

- Bimini Top
- Cockpit Cover

---

## Key Features & Option upgrades

---

In addition to her pristine condition below are some distinct features and option upgrades that make "White Gold" stand out above her competition:

- Due to the advanced systems of the 82' Sunseeker, she is very easy to operate should the owner wish to captain the yacht him or herself.
- New battery charger
- New Samsung TVs in Salon, VIP, and Guest Staterooms
- The yacht benefits from a 4th window in the master, giving an even more spacious, open and connected feel to the world around.
- The davit on the fly bridge enables the owner to carry one or two jetskis on the bridge or other toys.
- Unique grand master layout and oversized vip gives the boat the feel of two master size equivalent state rooms.
- The water maker onboard is a high production unit, ensuring ample fresh water during those trips to the Bahamas.
- The yacht is equipped with a 25KW frequency converter so destinations are limitless with this global-ready yacht.
- 2 x Kohler 23kw 50Hz Generators in lieu of standard two Kohler 20kw 50Hz
- 2.4 metre Whip Aerial for FM Radio to match VHF Aerial on Radar arch
- 4 brick safe with combination lock
- 4 x customer supply lights to be located above the Galley bar in lieu of drop satin lights in the Galley,
- Aft cockpit gates with stainless infill panel with Sunseeker decal
- Anchor winch upgraded to V6000 model with 100m of 12mm chain
- Bar type cleats
- Bimini Top in canvas with Stainless steel frame work (Navy Blue Canvass)
- Bose 48 surround sound system in lieu of Sony system
- Caterpillar marine power displays at both helm positions in lieu of analogue gauges
- CCTV system - 2 x cameras, 1 in the engine room and 1 under the flybridge arch covering the platform both connected to the E120 displays on helm positions
- Cockpit Teak Decking
- Crane - Flybridge crane for launch and recovery of jet ski (capacity 350 kg)
- Dinghy Inflator & socket 12 volt located in the bottom portside fender locker in the Lower Aft Deck,
- Electrical - Seamless Transfer
- Flybridge helm dashboard in carbon fibre effect
- Fourth vertical Portlight on each side of the Master stateroom in addition to the standard
- Galley joinery enclosure - half enclosed Galley layout to include the special custom made fridge-freezer unit
- Glendinning Cablemaster - 2 x power feed and recovery of 63 amp 220v AC shorepower cables
- Individual covers for the flybridge seating, Wet Bar & Helm Seats in Navy Blue Canvas

- iPod docking station connected to Bose 48 auxiliary input in the Lower Saloon
- Liferaft 8 Man Canister in the Lower Aft Deck
- Locking mechanism required to keep flybridge access hatch in the open position
- Lower helm dashboard in carbon fibre effect
- MCA spec grab rails located outside of crew access door (one either side)
- MCA spec kedge anchor to be supplied and be stored in the engine room
- Miele Washing Machine & Tumble Dryer - Separate Miele washer & dryer in lieu of standard Bosch combination unit in the Starboard Crew Cabin
- Pair of Retractable Cleats for tender on port and stbd corners of platform
- Power Take Offs required on both engines gear boxes to allow for simultaneous use of bow and stern thrusters
- Raymarine Autopilot system ST8001+ dual station
- Raymarine E120 -12.1" additional Colour display for the flybridge helm
- Raymarine E120 -12.1" Colour Radar Chartplotter and E120 - 12.1" Colour repeater on lower console with E120 -12.1" Colour repeater on fly console & Raystar 125 GPS Diff receiver with 4kw 48" open scanner
- Raymarine Ray 240E Class D-DSC - VHF Dual station
- Raymarine ST290 Depth, Speed, Wind and Compass displays at each helm position (4 displays at each helm position)
- Separate controls for bow and stern thruster
- Shore line telephone connection to be hard wired to the phone point next to the chart box
- Sony 42" LCD TV in lieu of standard for the Master aft cabin
- Sport (Predator) style of wheel at both helm positions in lieu of standard Yacht version
- Sprung mattress for double bed
- Teak Amtico flooring with black caulking between the strips
- Trim tab indicators
- Upgrade to 100m of anchor chain

---

## Manufacturer Provided Description

---

The graceful 82 Yacht proves, beyond any doubt, that first impressions really do matter. But it doesn't simply stop there. Her spacious interiors are an exercise in ergonomic genius, no more so than down below in her astonishingly spacious accommodation areas. The effect is one of remarkable comfort and luxury on every level.

---

## Main deck level

---

- Double curved sliding doors lead into main salon from aft cockpit area
- High gloss cherry interior wood with settees port and starboard and full entertainment center to port.
- Dining area forward to starboard with formal table and seating for 8. Full galley is opposite.
- Helm station is forward of dining area on the starboard side with fully equipped console and twin helm chairs.



- Opposite to helm station on port side is a twin bench seat with chart table.
- Companionway leads to accommodations below.

## Accommodations

---

### Master Stateroom:

- King size berth
- Fourier entrance
- Full beam, amidship
  
- (2) Hanging lockers
- Makeup area and mirror to starboard
- Sofa to port
- Dual reading lights
- 42" Sony TV
- Ample storage cabinets throughout

### Master Ensuite:

- Dual Sinks
- Black marble flooring
- Tecma head
- Tecma bidet
- Large shower with multi spray water jets
- Exhaust fan
- Mirror
- Medicine cabinet

### VIP Stateroom:

- Access hatch to bow
  
- Queen berth
- Sofa to port
- Makeup mirror to starboard with seating area
- Samsung TV
- Walk in closet
- Ensuite Head with full shower and black marble flooring

### Port Guest Stateroom:

- Samsung TV
- Dual Bunks with lower storage
- Hanging locker

- AC Thermostat

### **Starboard Guest Stateroom:**

- (2) Single berth
- Hanging locker
- Sony stereo
- Samsung TV
- Reading lights
- Ensuite head

## **Galley**

---

- Frigoboat Refrigerator
- Frigoboat Freezer
- Ice maker
- Bosh 4 ring ceramic hob
- Bosh Microwave/Oven
- Hob extractor
- Bosh dishwasher
- Black Granite countertop
- Stainless steel sink
- Hot and cold water
- Rubbish bin
- 8 place Sunseeker crockery set
- 8 place Sunseeker cutlery set
- Storage consisting of cupboards, drawers, top-box lockers and slide out larder rack
- Overhead halogen lighting 24v
- Spotlights under top box lockers
- Teak flooring
- Dining table seats 8
- Double AC sockets
- Fire extinguisher
- Fire blanket
- First aid kit

## **Lower Helm**

---

- Dual Besenzoni Helm Seats
- Carbon fiber dash
- (2) Raymarine E120
- (2) Raymarine ST290 Displays
- (2) CAT Electronic Engine Displays

- Trim gauge
- Bow/Stern thruster
- Raymarine VHF + Bose Speakers
- Ritchie Compass
- HR-1012 Sanshin Control
- Autopilot Raymarine ST8001
- AC Thermostat
- Water tight side door
- To port chart table
- Sofa
- Teak trends to lower level

## Fly Bridge

---

- Self draining cockpit
- Teak decks
- Acrylic deflecting spray screen
- Bench seating area for 3 at helm
- Storage lockers under seating
- Teak dining table with GRP base
- Upholstered sunbathing area forward
- Stainless steel aft safety rails
- Glass holders
- Wetbar with sink, ice maker, cool chest and griddle
- Fire extinguisher in wetbar locker
- Deckwash outlet
- Low-level flybridge lighting 24v
- Radar arch structure
- Two pairs marine speakers
- Companionway hatch to aft cockpit
- Dual horns
- Grill
- Besenzoni Crane
- Washdown
- Bimini Top
- Hatch for staircase

### Upper Helm:

- Carbon fiber dash
- (2) Raymarine E120
- (2) Raymarine ST290 Displays
- (2) CAT Electronic Engine Displays
- Trim gauge

- Bow/Stern thruster
- Raymarine VHF + Bose Speakers
- Ritchie Compass
- HR-1012 Sanshin Control
- Autopilot Raymarine ST8001

---

## Aft Cockpit Area

---

- Teak laid cockpit floor
- Self draining
- Aft fixed bench seating with storage
- Teak table with folding leaves on GRP base
- Aft rope lockers
- Stern safety gates
- Side door entrance for easy boarding
- Engine room access hatch
- Molded staircase to flybridge with teak treads
- 2 x stern capstan winches 24v and fairleads
- LED Overhead cockpit lights 24v
- Low-level courtesy lights 24v
- Pair Bose speakers connected to flybridge CD/radio system
- Locker with rubbish bin, cool chest and storage
- Fire extinguisher in wetbar lock
- Complete camper enclosure
- Teak side decks
- Sunscreen covers (side and forward windows)
- Door Access to Crew/Engine Room
- Hydraulic Swim Platform 625 kg lifting capacity
- Swimming Ladder
- Fresh water shower
- Besenzoni Passerelle
- Fittings all in stainless steel

---

## Forward Deck Area

---

- Pair bow cleats and fairleads
- Three pairs spring cleats with chafing bars
- Pair stern cleats and fairleads
- Pulpit and cockpit rails
- Stainless steel fendering with rubber insert
- Stainless steel bow roller with anchor stop
- Stainless steel bow plate
- Delta anchor 50kg and 100m chain (galvanised)

- Electric winch and capstan with foredeck and flybridge controls
- Deckwash with outlets forward and aft
- Chain locker and (2) fender stowage
- (2) Line storage lockers
- Fender tie bar under anchor locker lid
- Curved direct glazed safety glass windscreen
- Pantograph windscreen wipers and washers
- Fuel fillers port and starboard
- Fresh-water filler
- IMCO Navigation lights
- Remote controlled dual beam spotlight at bow
- Low-level courtesy lights on side decks 24v
- Underwater lights
- Ensign staff and socket
- Bow seat and sunbathing pad
- Cup holders
- Speaker Connection
- Forward seating
- Hatch to VIP stateroom
- Jabsco Washdown
- Windlass

---

## Engine Room

---

- CAT C-32 1652 HP (1153 hrs.)
- 2 x submerged props in semi-tunnels
- Dual Separ SWK - 2000/18 UMK
- Sea fire system
- Dometic 24,000 BTU (4) Units
- Marine Air System
- Water Maker: Idromar International Model MC3J
- (2) HM1 Marine Silencer
- (2) Cable Masters
- Storage rack over port motor
- (2) Exhaust fans
- Separate fuel filters with water alarms
- Automatic fire extinguisher with engine/generator and fan shutdown
- 1 x automatic bilge pump (in each watertight compartment)
- 1 x automatic flood pump (forward and engine room)
- 2 x extractor fans AC
- Manual bilge

---

## Electrical

---

- Kohler generators 2 x 23kW (Port: 1182 hrs. Starboard: 1729 hrs.) with underwater silent exhaust and sound box
- Galvanic isolator
- 24v and 12v DC electrical system with full circuit breaker protection
- 8 x engine batteries 24v circuit
- 4 x domestic batteries 24v circuit
- 2 x generator batteries 12v circuit
- Alternator split charging system
- Remote battery switches controlled from locker in cockpit
- 95 amp battery charger for 24v circuits
- 80 amp combi/charger
- 20 amp battery charger for 12v circuits
- 2 x 2kW immersion heaters for calorifier
- AC sockets throughout the boat
- 24v hand light and cable
- ANG Converter 25 kW
- Phase Three Smart Charger (1) Model PT-70A (2) Model PT-2495F
- LED Camera

---

## Construction

---

- Hand-laid GRP
- Gel coat including stripes
- Vinylester skin coat with powderbound mat
- Stitched multi-axial reinforced single skin bottom
- Balsa cored hull topsides
- PVC foam cored deck and superstructure
- Hull stiffened with longitudinal stringers supported by transverse bulkheads and floors

---

## Principal Features

---

- Air conditioning
- Hydraulic lifting platform
- Electric winch with foredeck and flybridge controls
- Side opening helm access door
- Hot and cold swimming shower at stern
- Power-assisted steering
- Flybridge wetbar with sink, ice maker, cool chest and griddle
- Flatscreen televisions in all cabins
- Hi-fi surround-sound system DVD/CD/
- radio in saloon and master stateroom

- DVD/CD player in guest cabins
- Aft cockpit wetbar with rubbish bin and cool chest
- Electric refrigerator, freezer and ice maker
- Ceramic hob, microwave/oven and dishwasher
- Electronic depth and speed displays
- Radar/Chart plotter with GPS
- Autopilot
- VHF radio (dual station)
- Hot and cold water system
- DC fresh-water pump
- Toilet system with holding tank
- Automatic fire extinguishing system for engine room
- Automatic bilge pumps
- Slow speed generators with silent exhausts
- AC shorepower/battery charger
- Bow thruster
- Stern thruster
- Trim tabs
- Remote controlled spotlight at bow
- Deckwash with outlets forward, aft and flybridge
- Fresh-water marina connection
- Teak bathing platform and steps
- Teak side decks
- Teak cockpit floor
- Screen demisters
- Stern winches
- Antifouling
- All items included in standard specification

---

## Exclusions

Owner's personal belongings.

---

## Disclaimer

The Company offers the details of this vessel or yacht in good faith but cannot guarantee or warrant the accuracy of this information nor warrant the condition of the vessel. A buyer should instruct his representatives, agents, or his surveyors, to investigate such details as the buyer desires validated. This vessel or yacht is offered subject to prior sale, price change, or withdrawal without notice.

# PHOTOS



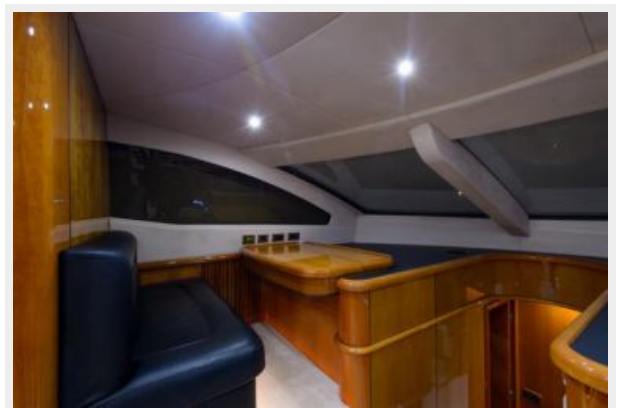
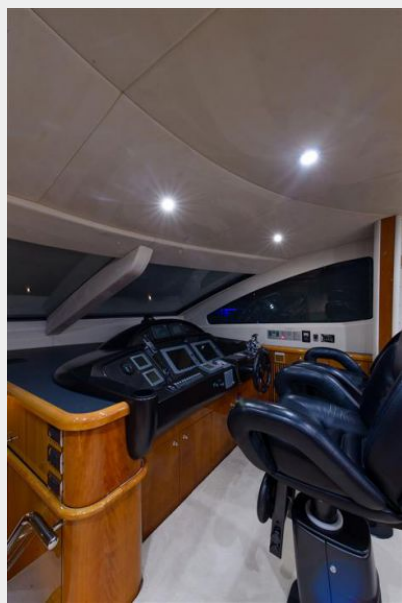
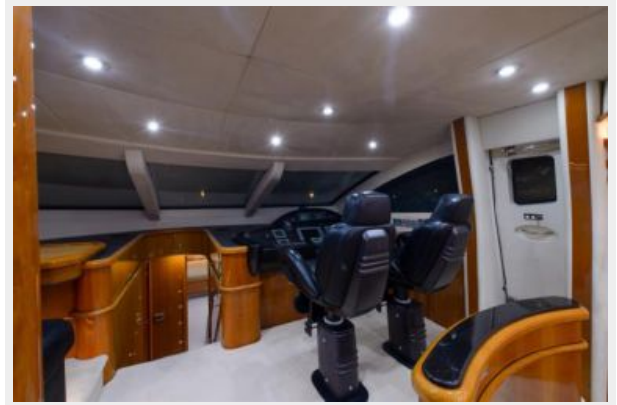
























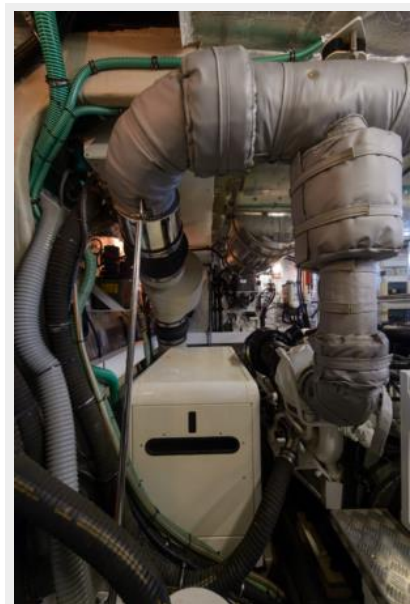








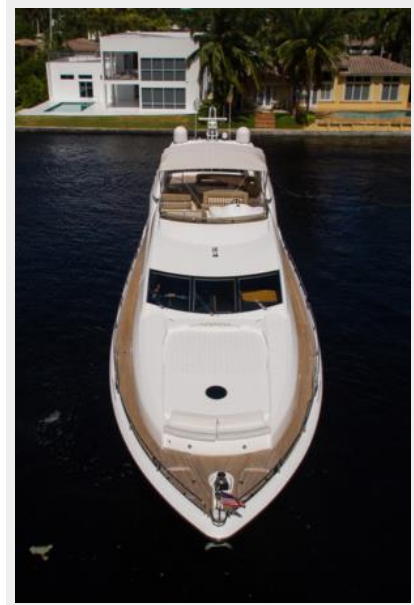
















# CONTACTS

---

Andrey Shestakov, leading yacht broker of the sales department of Shestakov Yacht Sales Inc. Shestakov Yacht Sales Inc., the official representative of the Miami/Fort Lauderdale FL headquarters.

## Contact details

---

Email: [andrey@shestakovyachtsales.com](mailto:andrey@shestakovyachtsales.com)

Web: [shestakovyachtsales.com/en/](http://shestakovyachtsales.com/en/)

## Telephones

---

USA: +1(954)274-4435

## Office hours

---

Monday – Saturday: **9:00 - 21:00** EDT

Sunday: **closed**

## Address

---



Harbour Towne Marina, 850 NE 3rd St,  
STE 213, Dania, FL 33004