

COURAGEOUS COUPLE — SEAWIND CATAMARANS



Судостроитель:

SEAWIND CATAMARANS

Год постройки: 2009

Модель: Катамаран

Цена: ЦЕНА ЯХТЫ ПО ЗАПРОСУ

Местонахождение: United States

Длина общая: 38' 0" (11.58m)

Ширина: 21' 4" (6.50m)

Макс. осадка: 3' 7" (1.09m)

Купить **Courageous Couple** — **SEAWIND CATAMARANS** а также выбрать подходящую вам яхту из нашего каталога яхт вам поможет опытный яхтенный брокер Андрей Шестаков. На сегодняшний день компания **Shestakov Yacht Sales Inc.** имеет большое количество яхт в собственном списке продаж, а также тесно сотрудничает со всеми крупными яхтенными производителями по всему миру.

Для того чтобы купить яхту **Courageous Couple** — **SEAWIND CATAMARANS** а также проконсультироваться по любому вопросу связанному с покупкой, продажей, чартером яхт позвоните по телефону **+7(918)465-66-44**.

ОГЛАВЛЕНИЕ

ОГЛАВЛЕНИЕ	2
ХАРАКТЕРИСТИКИ	4
Обзор	4
Основная информация	4
Размеры	4
Скорость, вместимость и масса	4
Корпус и палуба	4
Информация о двигателе	5
ПОДРОБНОЕ ОПИСАНИЕ	6
Fully Loaded & Ready to Cruise	6
Manufacturer Provided Description	7
Additional Description1	8
Additional Description2	8
Additional Description 3	9
Additional Description 4	9
Additional Description5	10
Additional Description	10
Mast / Boom / Sails	10
Anchoring / Mooring	11
Исключения	11
Отказ от ответственности	11
ФОТОГРАФИИ	12
Manufacturer Provided Image	15
Manufacturer Provided Image	15
Manufacturer Provided Image	15
Manufacturer Provided Image	15
Manufacturer Provided Image	16
КОНТАКТЫ	17

Контактная информация	17
Телефоны	17
Время работы	17
Адрес	17

ХАРАКТЕРИСТИКИ

Обзор

This meticulously maintained Seawind 1160 is a blue water cruising catamaran, perfect for chartering or your own private use. She has only been used seasonably, being hauled out and covered for winter storage every year. Very light use and superbly equipped and ready to cruise. The innovative TRIFOLDING DOOR system converts the separate saloon and cockpit separated by a door, into a huge living and entertaining space. 2 Queen beds forward and one ensuite in aft. She has been outfitted with many extras and upgrades. Must See!

Основная информация

Тип судна: Катамаран

Модельный год: 2009

Год постройки: 2009

Страна: United States

Размеры

Длина общая: 38' 0" (11.58m)

Ширина: 21' 4" (6.50m)

Макс. осадка: 3' 7" (1.09m)

Скорость, вместимость и масса

Водоизмещение: 15400 Pounds

Вместимость воды: 185 Gallons

Объем топливного бака: 95 Gallons

Корпус и палуба

Материал корпуса: Fiberglass

Комплектация корпуса: Катамаран

Информация о двигателе

Двигатели: 2

Производитель: Not Applicable

Тип двигателя: Inboard

Тип топлива: Diesel

ПОДРОБНОЕ ОПИСАНИЕ

Fully Loaded & Ready to Cruise

NAVIGATION & ELECTRONICS

- Raymarine ST60 Tridata (Depth/Speed/Log)
- Raymarine 6001 Linear Autopilot
- Raymarine e-120 Chart Plotter
- Raymarine Radar - 24 Mile Range
- SDC Raymarine 54 E VHF Radio
- Compasses - 2 x Steering Binnacle Mounted Steering-Northern Hemisphere x 2 Upgrade

ENGINE & POWER

- Yamaha 30 HP Sail Drive, 3 Blade Folding Props Upgrade
- Battery AGM 200 AH x 1
- Shower Power & Double GPO x 3 (110v 60HZ)
- Charger/Inverter 2000W Freedom (110V 60HZ)
- Long Range Battery System with AGM 400amps/hrs
- Separate Engine Cranking Battery

SAILS & RIGGING

- Fully Battened Mainsail
- Mainsail Cruising Laminate & Adjustable RCB Upgrade
- Mainsail RCB Batten Cars
- Winch Harken 46 Electric x 1 Upgrade
- Mainsail Lazy Jack Bag
- Single Line Reefing
- Jib
- Self Tacking Jib System
- Jib Track Control
- Jib Cruising Laminate Upgrade
- Bowsprit & Screecher Fittings Kit
- Screecher/Continuous Furler/Sheets
- Second Winches for Screecher / MPS (Harken 40's)
- MPS Fittings Kit
-

ANCHOR

- Muir Electric Anchor Winch with 35# Plough Anchor/Chain
- Anchor Second System (35lb Plough, 10M Chain & 50M Rope)
- Anchor Bridle

SALOON, GALLEY, CABINS, HEADS

- Galley Cupboard Lower
- Upright VITRIFRIGO Refrigerator
- Separate ICEER Toploading Freezer
- LPG Oven & 3 Burner Stove
- Air Conditioning 16000BTU (110V 60HZ or 240V 60HZ)
- Forward Fully Opening Windows
- Targa Shade Strip
- Hatch Insect Screens
- Saloon Clip on Sun Screens
- Huge Main Bathroom w/ Separate Shower & Head
- 2 Queen Size Beds Forward
- Electric Toilet Quiet Flush Extra Large x 2 Upgrade
- Pressure Hot/Hold Water with 40L Hot Water System
- Washing Machine - LEMAIR 2.2KG (240V)

HULL

- Anti-Fouling with Epoxy Barrier Coat
- Striping

MISCELLANEOUS

- Solar Panel 120W x 2
- Eclectic Energy D-400 Wind Generator
- Prop Cutters
- Seat Cushions on Benches
- Captain's chair installed on Cooler Top
- Helm Seat Cushions
- TARGA Cushions
- Cockpit Side Clears
- Freshwater Deck Wash
- Transom Shower - HOT & COLD
- Dingy Davits
- SB BBQ

Manufacturer Provided Description

Welcome aboard the Seawind 1160 blue water cruising catamaran, one of the world's most awarded cruising and charter catamarans. The Seawind 1160 creatively blends key concepts of

other popular Seawind models to create a design that successfully combines the huge living space and allround visibility of the Seawind 1000, with the sleeping accommodation, luxurious fitout and security of the lockable Saloon featured on the Seawind 1200. Thanks to the innovative TRIFOLDING DOOR system that converts the separate saloon and cockpit separated by a door, into a huge living and entertaining space with the doors folding and stowing away into the targa above.

Additional Description1

- Ornate polished timber dining table: Lowers to create coffee table or double bed.
- Upholstered settee.
- Cocktail cabinet with ornate polished hinging lid.
- Forward windows in 10mm toughened glass and inset with opening 500mm x 375mm aluminium opening hatch. Side windows in 6mm toughened glass.
- Simulated teak & holly flooring.
- Saloon / cockpit doors: Moulded gelcoat tri-fold doors. Complete with folding mechanism for folding into Targa walkway.

Sleeping Cabins

- Polished timber solid doors on all private cabins.
- Port & Starboard fwd cabins : Each queen sized bed (2050mm x 1540mm)
- Aft Starboard cabin : Double bed (1990mm x 1230mm)
- Mattresses to be 150mm (6?) foam upholstered.
- Cabins lined.
- Recessed 12volt lighting.
- Storage/Cupboards.
- Carpeted floors.

Port Head

- Polished timber solid lockable door
- PAR manual toilet. Discharge via holding tank
- Holding tanks built in. Discharge pump out by shore station or directly overboard. Port 130L and Stb 110L
- Pipes, skin fittings and seacocks to be easily accessible and to meet survey requirements
- Vanity basin with pressure hot and cold water
- Separate shower stall with clear glass door. Wall mounted shower head and mixer tap
- Electric shower bilge pump with direct overboard discharge
- Large quantity cupboards/shelves to very high quality

Additional Description2

- High QualityDC electrical switch panel with circuit breakers, LED indicator lights, and voltage display
- Marine grade tinned electrical wiring with extensive use of heat sealed connectors..
- Batteries x 3 comprising: House System (400 amp hrs) : 2 x 200 amp hr AGM (Absorbed Glass Matt) deep cycle / heavy duty batteries. One engine battery ? 100amp/h AGM
- 230amp heavy duty isolation switch.
- 12 V lighting : Numerous 12V interior lamps and courtesy lights throughout. Dome lights in cockpit.
- 4 x 12V Outlets.
- Survey approved navigation lights. Port & Starboard mounted on bow rails.
- Deck floodlight mounted on spreaders.
- Mast head anchor / riding light.

Additional Description 3

- Spacious galley with co-ordinated laminex counter surfaces, timber accents.
- Three (3) burner LPG stove & oven.
- Stainless steel pot holders. Flame failure device fitted to shut off LPG immediately in event of flame going out.
- Double bowl stainless steel sink.
- Pressure hot & cold fresh water system.
- Single lever mixing tap.
- Refrigerator : Front opening upright ?Vitrifrigo? fridge 130 litres.
- Spacious freezer ? large 60 litre top loading, heavily insulated. 12volt Eutectic system by ICEER.
- Under bench storage with polished timber door fronts & cutlery drawers.
- Inboard side of galley: Over-bench cupboards with sliding door fronts
- Simulated teak & holly flooring.
- Trash bin, paper towel holder.
- LPG solenoid control in galley

Additional Description 4

- Twin Yanmar 30hp saildrive diesel engines. Fresh water cooling, rubber isolation mounts on reinforced fibreglass bed with integral oil drip pan.
- Two bladed folding propellers.
- Dual engine controls at either helm station. Remote electric key start at engine controls.
- Fuel tanks: Total 360 litres (80 gallons) in two survey approved pressure tested aluminium tanks. Fuel gauge site glass fitted.
- Water intakes for engines protected by external strainer & filter. (1 per engine)
- Twin primary Racor (or similar) water separator / fuel filters, secondary engine fuel filters, jacketed fuel lines.

- Engine, fuel tank & fuel line installation to Australian standards to meet offshore survey.
- Console mounted engine instruments with electric tachometers, engine monitoring & warning systems, engine hour meters.

Additional Description5

- Aluminium Hatches & portholes (9 in total)
- 4 x Forward Hatches 475mm x 475mm (Gebo)
- 2 x Mid cabin hatches 475mm x 475mm (Gebo)
- 1 x Port Bathroom window hatch 500mm x 375mm (Gebo)
- 1 x Galley window hatch 500mm x 375mm (Gebo)
- 1 x Aft Cabin window hatch 500mm x 375mm (Gebo)
- Fibreglass Deck Hatches:
- Forward anchor & storage hatches x 5
- Cockpit storage hatches x 2
- 6 x Docking cleats. Each side : bow, stern & amidships.
- 1 x Heavy duty mooring cleat on forward walkway.
- Ventilation: 1 x Cabin vent.
- Mast base turning blocks. All halyards & sail controls to cockpit.
- 12 x Rope clutches - Spinlock brand.
- Sheet winches : 2 x Harken ST46ST.
- Screecher/MPS winches: 2 x Harken 40s ? 2 speed self tailing.
- Stanchions/Rails: High quality stanchions, bow rails and stern rails with 3 life-lines. 700mm high to meet Australian survey requirements..
- 2 x transom access gates with pelican hook releases.
- 2 x side access gates with pelican hook releases.
- Aft swim ladder : folding stainless aft swim ladder.

Additional Description

- Twin steering compasses.
- Raymarine ST60 Tridata : Log, speed, depth.
- Raymarine DSC VHF radio.

Mast / Boom / Sails

- Clear anodised aluminium mast and boom.
- Single Spreader, 7/8 rig.
- Standing Rigging - Forestay 3/8 (10mm) 1 x 19 Dieform wire.
- Sidestays 3/8 (10mm) 1 x 19 Dieform wire
- Diamonds 5/16 (8mm) 1 x 19 Dieform wire.

- All fitted with Sealock turnbuckles and end fittings.
- Halyards - Main halyard: 10 mm Spectra rope : Heavy duty shackle.
- Genoa halyard: 8 mm Spectra rope. Heavy duty shackle.
- Topping lift: 8 mm rope, Heavy duty shackle.
- Spinnaker Halyard: 10mm rope with snap-shackle spliced to end.
- Boom outhaul.
- 2 x mainsail reefing lines fitted.
- All halyards, reefing lines to be lead back to cockpit through turning blocks, rope clutches (Spinlock).
- Sheet Winches: 2 x Harken ST46ST?s.
- Fully battened mainsail. Triple stitched reinforced construction. Luff adjustable batten end caps. Fibreglass sail battens. Roller bearing batten cars.
- Cruising mainsail cover with integrated lazy jack system.
- Self-tacking headsail. Profurl headsail furler. Curved headsail traveller track with end stops. Control sheet to cockpit.

Anchoring / Mooring

- Muir Cougar electric anchor winch with chain & gypsy. Located under locker to give clean deck. Primary anchor is 35 lb CQR type with 50 mtrs x 8mm short link galvanised chain.
- Primary anchor is stored in a specially designed anchor roller under the forward beam.
- Anchor winch has foot switch at the winch plus a remote up / down control at the helm station.
- 3 x PVC Inflatable Fenders
- 4 x Mooring lines (each 15 metres x 14mm).

Исключения

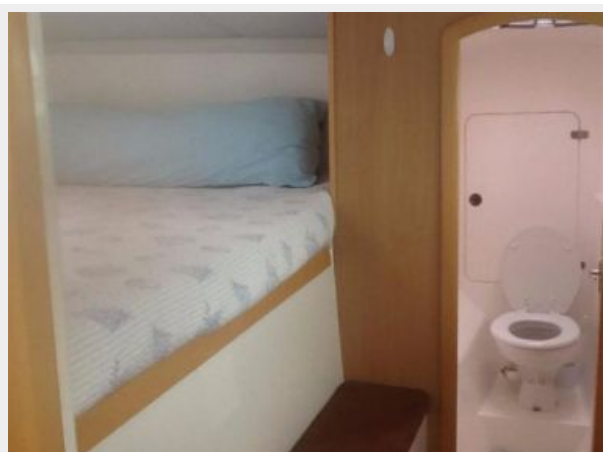
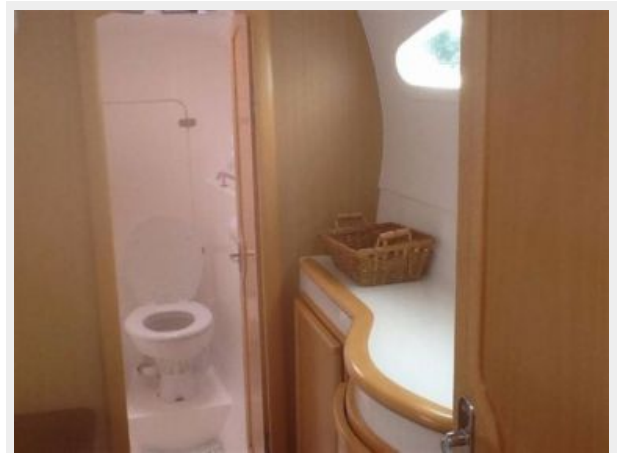
При продаже яхты исключаются личные вещи владельца.

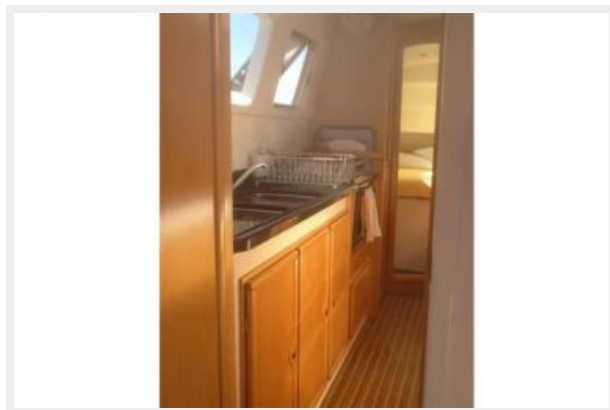
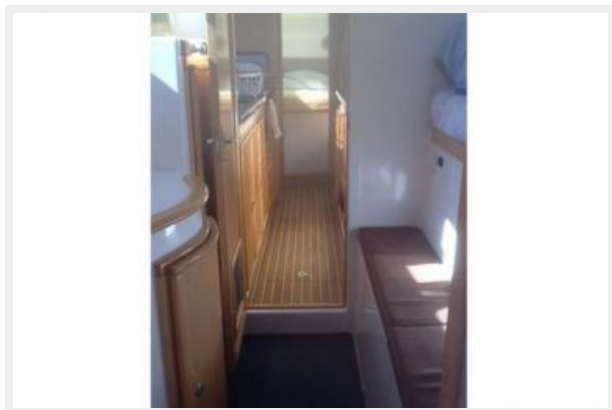
Отказ от ответственности

Компания предоставляет описание судна или яхты добросовестно, но не может гарантировать точность этой информации, а также не ручается за техническое состояние. Покупатель должен проинструктировать своих агентов или оценщиков исследовать представленную информацию более подробно, по собственному желанию. Продажа судна или яхты, изменение цены или снятие с продажи будет происходить без предварительного уведомления.

ФОТОГРАФИИ









Manufacturer Provided Image



Manufacturer Provided Image



Manufacturer Provided Image



Manufacturer Provided Image



Manufacturer Provided Image



КОНТАКТЫ

Андрей Шестаков (Andrey Shestakov) – ведущий яхтенный брокер отдела продаж яхт и судов компании Shestakov Yacht Sales Inc. Официальный представитель Shestakov Yacht Sales Inc. для русскоговорящих клиентов в центральном офисе компании в Майами/Форт Лодердейл/Флорида/США.

Контактная информация

Email: andrey@shestakovyachtsales.com

Web: shestakovyachtsales.com

Телефоны

Краснодарский край: **+7(918)465-66-44**

США, Майами, Флорида: **+1(954)274-4435**

Время работы

Понедельник – Суббота: **9:00 - 21:00**
EDT

Воскресенье: **Закрето**

Адрес



Harbour Towne Marina, 850 NE 3rd St,
STE 213, Dania, FL 33004