

## DR NICK — GRAND BANKS



**Судостроитель:** GRAND BANKS

**Год постройки:** 1999

**Модель:** Крейсер

**Цена:** ЦЕНА ЯХТЫ ПО ЗАПРОСУ

**Местонахождение:** United States

**Длина общая:** 42' 0" (12.80m)

**Ширина:** 14' 1" (4.29m)

**Макс. осадка:** 4' 2" (1.27m)

Купить Dr Nick — GRAND BANKS а также выбрать подходящую вам яхту из нашего каталога яхт вам поможет опытный яхтенный брокер Андрей Шестаков. На сегодняшний день компания Shestakov Yacht Sales Inc. имеет большое количество яхт в собственном списке продаж, а также тесно сотрудничает со всеми крупными яхтенными производителями по всему миру.

Для того чтобы купить яхту Dr Nick — GRAND BANKS а также проконсультироваться по любому вопросу связанному с покупкой, продажей, чартером яхт позвоните по телефону **+7(918)465-66-44**.

# ОГЛАВЛЕНИЕ

ОГЛАВЛЕНИЕ	2
ХАРАКТЕРИСТИКИ	3
Обзор	3
Основная информация	3
Размеры	3
Скорость, вместимость и масса	3
Корпус и палуба	4
Информация о двигателе	4
ПОДРОБНОЕ ОПИСАНИЕ	5
Layout and Accommodations	5
Helm & Navigation	5
Engine Room & Mechanical	6
Electrical	6
Deck & Construction	7
Safety, Gear & Tenders	7
Manufacturer Provided Description	8
Disclaimer	8
Исключения	9
Отказ от ответственности	9
ФОТОГРАФИИ	10
КОНТАКТЫ	22
Контактная информация	22
Телефоны	22
Время работы	22
Адрес	22

# ХАРАКТЕРИСТИКИ

## Обзор

"Dr. Nick" is a beautiful late model example of the Grand Banks 42 Europa. Long time and experienced GB owners have pampered this boat and she shows accordingly. With reliable and efficient 300hp CATs (just had their 2000 hour service completed) this boat is ready for extended cruising and has seen relaxed use predominately here on the Chesapeake Bay.

"Dr. Nick" has a generous 2 stateroom arrangement with both berths being doubles (no bunks or v-berths!), a bright and open salon and galley up and the terrific covered aft deck that this model is famous for. Engine room and machinery space is well lit and engineered and there is a large lazarette that is a real plus for storage for long trips. The flybridge is easily accessed with molded fiberglass steps with teak treads and stainless handrails. The flybridge features abundant room for entertaining and a large boat deck that holds a Trinka sailing/rowing dinghy!

With timeless lines, exceptional quality and seakeeping abilities and the utmost of owner care, "Dr. Nick" is the 42 Europa to buy! Call today to schedule a showing or to gain more information!

## Основная информация

Тип судна: Крейсер

Модельный год: 1999

Год постройки: 1999

Страна: United States

## Размеры

Длина общая: 42' 0" (12.80m)

Ширина: 14' 1" (4.29m)

Макс. осадка: 4' 2" (1.27m)

Длина привального бруса: 43' 3"  
(13.18m)

## Скорость, вместимость и масса

Водоизмещение: 39000 Pounds

Вместимость воды: 278 Gallons

Вместимость сточного бака: 50 Gallons

Объем топливного бака: 600 Gallons

---

## Корпус и палуба

---

**Материал корпуса:** Fiberglass

---

## Информация о двигателе

---

**Двигатели:** 2

**Производитель:** Caterpillar

**Модель:** 3116

**Тип топлива:** Diesel

---

# ПОДРОБНОЕ ОПИСАНИЕ

---

## Layout and Accommodations

---

"Dr. Nick" is a well cared for example of the Grand Banks 42 Europa. The Europa or "EU" design allows for easy boarding either the way of its generous side decks or from the transom. Famous for its large covered aft deck and one level living this is one of the most sought out boats on today's market. The aft deck is large, protected and able to comfortably accommodate a table and chairs. Beneath the aft deck is a good sized lazarette for storage as well as a separate mechanical room that houses items like the freshwater pump, hot water heater, battery charger, and sanitation treatment system outside of the engine room. A door from this area does provide secondary access to the engine room from the cockpit rather than under the salon sole when needed. Also found on the aft deck is the large molded fiberglass stairway with teak tread that leads to the flybridge. The stairs make for an easy ascent to the large flybridge with built in bench seating with storage below, a stainless steel based teak table with chairs and an extra dunnage box with cushion top. A bimini provides shade to the well laid out helm and helm seats and aft on the boat deck is a hinged mast and boom with electric winch to launch the Trinka tender. All flybridge cushions are done in a handsome navy fabric with attractive white piping and the bimini and dodger panels are done in a matching navy canvas.

## Helm & Navigation

---

"Dr. Nick" is a well cared for example of the Grand Banks 42 Europa. The Europa or "EU" design allows for easy boarding either the way of its generous side decks or from the transom. Famous for its large covered aft deck and one level living this is one of the most sought out boats on today's market. The aft deck is large, protected and able to comfortably accommodate a table and chairs. Beneath the aft deck is a good sized lazarette for storage as well as a separate mechanical

- Furuno 1933 and Furuno 1720 Charplotters w/ C-Map Software
- Furuno Open Array Radar
- Cabin Mounted Icom IC-M504 VHF DSC Capable VHF Radio with Remote Fly Bridge "Command Mic"
- Icom IC-M45 VHF Radio (fixed on flybridge)
- Standard Horizon Hand Held VHF Radio; DSC Capable
- Simrad Robertson AP22 Autopilot (both helms)
- Remote Mast Mounted Spotlight with Controls at Both Helms
- Bennett Trim Tab Controls at Both Helms
- Full Analog VDO Gauges
- Rudder Angle Indicator
- Ritchie Compass (Upper & Lower)
- Morse Throttle and Shift Controls

- (3) Double Armed Windshield Wipers with Washer
- Stainless and Teak Rimmed Teak Steering Wheels
- Engine and Bilge Alarms
- DC Outlets
- Horn
- Windlass Controls (Upper and Lower)
- Small Intercom Handheld Radios For Use As Intercom or in Docking

## Engine Room & Mechanical

---

The owner of "Dr. Nick" had a full engine and generator survey done by MR Power Specialists in September of 2015 as part of a good practice maintenance program. The findings albeit a short list were addressed and the engines have received their Caterpillar 2000 hour service. There is a maintenance log available and the boat has seen excellent care and upgrading.

- 2000 Hour CAT Service performed June of 2015
- Muskrat prevention system installed on both engine exhausts
- Walker AirSeps Added
- Groco Strainers
- Racor Fuel Filters with Pressure Gauges
- Fuel Tank Manifold
- Fireboy Automatic Fire Extinguishing System Installed in 2004
- Algae X Fuel Treatment System Added
- 110v and DC Engine Room Lighting
- Extensive Sets of Mechanical and Electrical Tools; Complete Set of "O" rings for Sea Water Strainers/Hull Valves
- Hot Water Heater Bypass Hose For Use in Winterization
- One Automatic Pump For Use in Winterization of Fresh Water System

## Electrical

---

- Onan 8kw Generator in Sound Shield (1096 hours)
- 50amp Shorepower Service
- 50amp Shorepower Cord
- Pro Mariner Pro Nautic 1250 Digital Battery Charger
- Fiberglass Battery Boxes
- AGM Batteries
- AC and DC Ships System with Breaker Panel
- Amp and Volt Gauges
- Professional Mariner Battery Gauge at Helm

---

## Deck & Construction

---

- Bottom Painted in May of 2016 Including Cleaning and Painting of Strainers and Thru Hulls, Prepping and Painting Running Gear with Barnical Blaster and Replacement of all Exterior Zincs as Necessary
- Cleaned and Lubed SeaCocks in May of 2016
- Serviced Spurs on Shafts in May of 2016
- Fortress Anchor w/ 40' of 3/8" Chain and 150' of 5/8" Nylon Rode
- Hot and Cold Water Shower at Transom
- Lofrans Windlass
- Windlass Controls at Helm and On Deck
- Anchor Washdown
- Electronics Mast with Hinge and Boom
- New Warn 2000 Electric Boom Winch to Launch Tender Installed September of 2015
- Spreader Lights on Mast
- Teak Swim Platform
- Swim Ladder

---

## Safety, Gear & Tenders

---

- Trinka 8' Dinghy with Oars and Completed Sail Kit; with Two Lifting Bridles
- West Marine/Zodiac 8' Inflatable Dinghy with Oars, Roll-up Flooring, and Set of Air Pumps
- Honda 2hp Four Stroke Outboard Motor
- Ocean Kayak 10' "Venus" Kayak with Seat and Paddle
- (2) Dahon Folding Bikes
- (8) Adult Life Preservers and (4) Child Life Preservers
- One Sirius Signal Distress Light (Replaces need for Pyrotechnic Flares)
- Set of Orion Safety Flares/Smokes
- Fire Extinguishers Appropriately Located Throughout the Boat
- Fireboy 65# Automatic Fire Extinguishing System In Engine Room With Automatic Engine and Blower Shutdowns
- Fire Extinguishers All Serviced in June of 2016
- Teak Flag Pole with U.S. Flag
- Teak Flag Staff for Burgee
- 25' Sea Water Anchor Chain Wash Down Hose
- Set of 5/8" Three Strand Nylon Mooring Lines for Mooring Boat at Home Slip
- Set of Blue 5/8" Double Braid Nylon Mooring Lines for Use When Visiting Other Marinas
- (2) Large Covered Fenders Plus (2) Smaller Fenders
- 50' Hose for Loading Potable Water Plus One Water Filter With Dedicated Connection Hose
- One 50' Hose and One 25' Hose for Washing the Boat; Buckets, Sponges, Brush Included
- (2) Telescoping Boat Hooks
- (2) Teak Side Name Boards; (3) Teak Transom Name Boards (Will have "Dr. Nick" Name

Removed)

- (3) Teak Deck Chairs for Flybridge with Portable Table
- One Fixed Teak Flybridge Table
- (2) Teak Deck Chairs with a Portable Table for Covered Aft Deck
- Fixed Bag to Hold Grill Cooking Gas Bottles; Two Bottles Included
- Applicable Cushions for Flybridge Seats; Several Flybridge Pillows
- Set of White Sunbrella Canvas Hand Rail, Cap Rail and Transom Covers to Protect the Bright Work.

## Manufacturer Provided Description

---

The Grand Banks 42 Europa has been decades in the making. The original Ken Smith design has been amended and updated with the practical input of her owners. The experience gained since the laying of the first GB 42 keel in 1966 is reflected in each one commissioned today. Her practical layout, sturdy fiberglass construction, deep water design, and long range capability all add up to a complete cruising boat. The Grand Banks semidisplacement hull design, with a fine entry forward, hard chines aft, and a full keel has been proven on waters around the world. Single or twin diesel power will deliver economy at hull speed and provide higher cruising speeds when larger than the standard engines are chosen. Many power options are available. The exterior of the hull and deckhouse on the GB 42 is smooth gelcoated fiberglass. Teak decking is laid over the fiberglass on the main deck and flybridge. The bulwarks surrounding the wide main deck are capped with a sturdy teak safety rail providing safe movement from bow to stern for those on board. The Grand Banks 42: In production since the 60s, her hull was redesigned in the early 90s giving the proven Grand Banks semi-displacement hull a longer waterline and an increased beam. Ideal for a couple with children or guests, she cruises economically at 9 knots, yet 17 knots is typical with optional engines. The Classic offers two staterooms, separated by the main saloon and galley. A variety of layouts are available including an aft cabin with an island double bed. The Europa's main saloon opens to a protected cockpit for expanded, one-level living. Two forward staterooms are standard.

## Disclaimer

---

While we attempt to display current and accurate data, this listing may not reflect the most recent transactions or may contain occasional data entry errors. Selling agent makes no warranties, express or implied, regarding the content or availability of the products described herein. All inventory listed is subject to availability and prior sale. Please consult selling agent for details. Prices are quoted for the USA only and may not include transportation, taxes, or other applicable charges. Photographs may be representative only and may vary somewhat from the actual items offered for sale. We will not be responsible for inaccurate data obtained from our site. Please check with your local dealer to ensure that you have the latest information available. Information on this web site could include technical inaccuracies or typographical errors. Changes may be periodically made to the information or the products herein. Questions or comments regarding



these policies may be directed to website hosting agent.

## Исключения

---

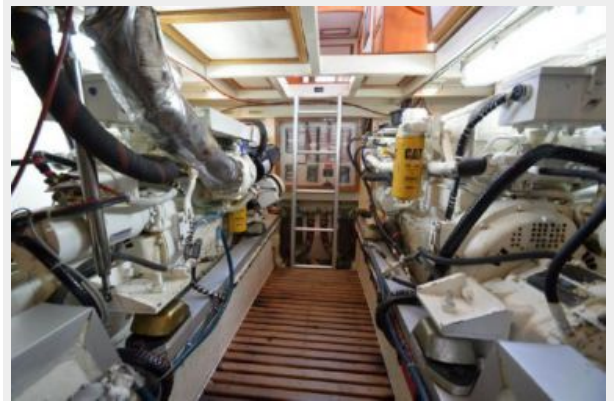
При продаже яхты исключаются личные вещи владельца.

## Отказ от ответственности

---

Компания предоставляет описание судна или яхты добросовестно, но не может гарантировать точность этой информации, а также не ручается за техническое состояние. Покупатель должен проинструктировать своих агентов или оценщиков исследовать представленную информацию более подробно, по собственному желанию. Продажа судна или яхты, изменение цены или снятие с продажи будет происходить без предварительного уведомления.

# ФОТОГРАФИИ









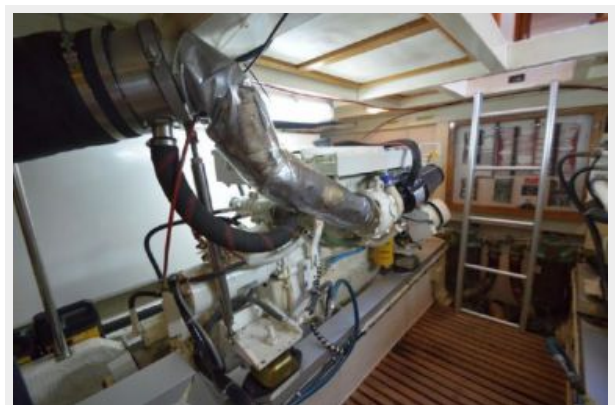




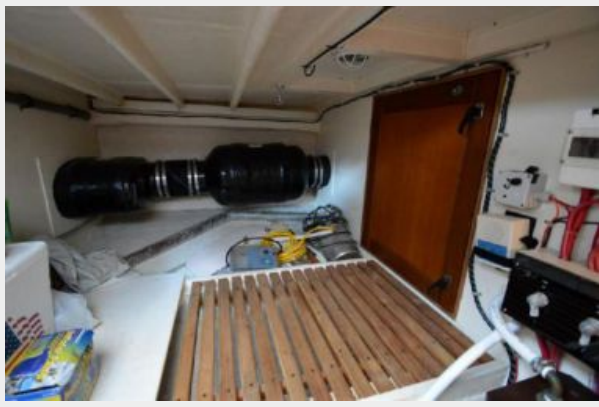














# КОНТАКТЫ

---

Андрей Шестаков (Andrey Shestakov) – ведущий яхтенный брокер отдела продаж яхт и судов компании Shestakov Yacht Sales Inc. Официальный представитель Shestakov Yacht Sales Inc. для русскоговорящих клиентов в центральном офисе компании в Майами/Форт Лодердейл/Флорида/США.

## Контактная информация

---

Email: [andrey@shestakovyachtsales.com](mailto:andrey@shestakovyachtsales.com)

Web: [shestakovyachtsales.com](http://shestakovyachtsales.com)

## Телефоны

---

Краснодарский край: **+7(918)465-66-44**

США, Майами, Флорида: **+1(954)274-4435**

## Время работы

---

Понедельник – Суббота: **9:00 - 21:00**  
EDT

Воскресенье: **Закрето**

## Адрес

---



Harbour Towne Marina, 850 NE 3rd St,  
STE 213, Dania, FL 33004