

A DAZE — BENETEAU



Builder: BENETEAU

Year Built: 2012

Model: Cruising Sailboat

Price: PRICE ON APPLICATION

Location: United States

LOA: 41' 0" (12.50m)

Beam: 13' 9" (4.19m)

Max Draft: 5' 7" (1.70m)

Our experienced yacht broker, Andrey Shestakov, will help you choose and buy a yacht that best suits your needs **A DAZE — BENETEAU** from our catalogue. Presently, at Shestakov Yacht Sales Inc., we have a wide variety of yachts available on our sale's list. We also work in close contact with all the big yacht manufacturers from all over the world.

If you would like to buy a yacht **A DAZE — BENETEAU** or would like help answering any questions concerning purchasing, selling or chartering a yacht, please call **+1(954)274-4435**

TABLE OF CONTENTS

TABLE OF CONTENTS	2
SPECIFICATIONS	3
Overview	3
Basic Information	3
Dimensions	3
Speed, Capacities and Weight	3
Accommodations	3
Hull and Deck Information	3
Engine Information	4
DETAILED INFORMATION	5
Accommodations	5
Galley	5
Electrical	5
Electronics	6
Deck and Hull	6
Sails and Rigging	7
Mechanical	7
Disclaimer	7
Exclusions	7
Disclaimer	7
PHOTOS	9
CONTACTS	14
Contact details	14
Telephones	14
Office hours	14
Address	14

SPECIFICATIONS

Overview

"A Daze" is Lightly sailed and well maintained. Her 2 Cabin 1 Head layout is perfectly suited for a couple's cruiser with a passion for blue water sailing and / or exploring the islands.

Basic Information

Category: Cruising Sailboat

Model Year: 2012

Year Built: 2012

Country: United States

Vessel Top: Bimini Top

Dimensions

LOA: 41' 0" (12.50m)

Beam: 13' 9" (4.19m)

Max Draft: 5' 7" (1.70m)

Speed, Capacities and Weight

Displacement: 18624 Pounds

Water Capacity: 151 Gallons

Fuel Capacity: 53 Gallons

Accommodations

Total Cabins: 2

Total Heads: 1

Hull and Deck Information

Hull Material: Fiberglass

Hull Finish: Plastic

Engine Information

Engines: 1

Manufacturer: Yanmar

Model: 3JH5E

Engine Type: I/O

Fuel Type: Diesel

DETAILED INFORMATION

Accommodations

- Two stateroom, one head layout
- Forward stateroom with 6'3" headroom; berth measures 6'7" x 6'2" and has dual headboards; hanging locker; vanity; (3) overhead hatches with screens; (2) portholes with curtains; indirect lighting
- The Salon is roomy and bright with 6'5" headroom; U-shaped leather upholstered settee with dinette to starboard; to port is chart table and two leather armchairs which can be configured to suit your needs; abundant storage; (2) coachroof panoramic windows and (2) portholes with curtains; (2) opening portholes; opening hatch with screen; LED lighting; indirect lighting. Custom carpeting in salon and companionway stairs
- Aft cabin to starboard with 6'2" headroom; double berth measures 6'7" x 5'3" x 4'2"; access door to head; hanging locker and additional storage; (2) portholes with curtain; window, overhead hatch with screen
- Storage cabin aft to starboard features a walk in storage area with door and access to under cockpit storage
- Head is aft in salon to starboard. It offers access from the salon or the aft cabin and has a stall shower; hot and cold pressure water; Vacuflush toilet; opening portlight and storage.

Galley

- Galley is aft in salon to port and is L-shaped
- Double stainless steel sink
- Pressurized hot and cold water
- Propane 2-burner stove with oven
- 22 gallon top loading freezer
- 34 gallon front loading refrigerator
- Storage in bins, drawers, cupboards
- Port-light with curtain
- Fridge with separate freezer

Electrical

- 12V / 115V systems with breaker panels
- (2) House AGM batteries; engine start AGM battery Lifeline
- 12V Electrical panel
- 12V power outlet
- 115V outlets
- Overhead lights, reading lights

- Battery charger
- Stereo with cockpit speakers
- 2 zone reverse cycle Air Conditioning

Electronics

- Simard Auto Pilot
- Simrad VHF w/ Wireless Remote
- Simrad 12' Multifunction Display mounted under cockpit table
- Simrad IS20 Graphic
- Simrad IS20 Wind

Deck and Hull

- Max Power Bow thruster
- 3 Blade prop
- Custom, bimini
- Helm covers, cockpit table cover
- Fully opening transom electrically converts into swim platform with teak decking
- Teak cockpit seats and sole
- Cockpit table with folding leaves and ice chest storage
- Two cockpit sole lockers and life-raft locker under helm
- (2) Self-tailing Genoa sheet winches
- Self-tailing coach-roof winch
- Electric self tailing coach-roof winch
- Winch handles
- Self bailing chain locker
- Single roller s/s bow fitting with offset roller
- Quick anchor windlass
- Bruce and fortress anchors
- Stainless steel bow pulpit
- (2) S/S aft push-pit
- Lifebuoy bracket
- Flag pole
- Double lifelines with access to deck port and starboard
- Nav lights
- Propane storage in cockpit
- Port and starboard helms with leather wrapped s/s wheels
- Emergency tiller
- Portside engine controls
- Cockpit shower w/ Hot and Cold Water

Sails and Rigging

- Sails and Rigging
- Anodized aluminum mast
- Anodized aluminum boom
- Furling genoa with drum and UV cover
- In mast furling mainsail
- Asymmetrical spinnaker
- Spinnaker gear
- S/S Standing rigging
- (2) Backstays with buckles
- Rigid boom vang
- Rigging led to cockpit
- Sheet bags

Mechanical

- Yanmar diesel 40hp sail drive
- Engine control panel in cockpit
- Soundproofed engine compartment
- 12V 125ah Alternator
- 53 gallon diesel fuel tank
- Extra water tank (additional 52 gallons)

Disclaimer

The Company offers the details of this vessel in good faith but cannot guarantee or warrant the accuracy of this information nor warrant the condition of the vessel. A buyer should instruct his agents, or his surveyors, to investigate such details as the buyer desires validated. Hours listed may vary from actual hours due to recent use. Purchaser is encouraged to verify hours prior to purchase. This vessel is offered subject to prior sale, price change, or withdrawal without notice.

Exclusions

Owner's personal belongings.

Disclaimer

The Company offers the details of this vessel or yacht in good faith but cannot guarantee or warrant the accuracy of this information nor warrant the condition of the vessel. A buyer should instruct his representatives, agents, or his surveyors, to investigate such details as the buyer

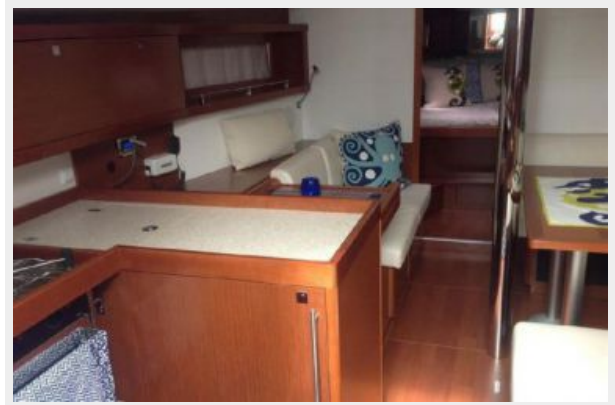
desires validated. This vessel or yacht is offered subject to prior sale, price change, or withdrawal without notice.

PHOTOS











CONTACTS

Andrey Shestakov, leading yacht broker of the sales department of Shestakov Yacht Sales Inc. Shestakov Yacht Sales Inc., the official representative of the Miami/Fort Lauderdale FL headquarters.

Contact details

Email: andrey@shestakovyachtsales.com

Web: shestakovyachtsales.com/en/

Telephones

USA: +1(954)274-4435

Office hours

Monday – Saturday: **9:00 - 21:00** EDT

Sunday: **closed**

Address



Harbour Towne Marina, 850 NE 3rd St,
STE 213, Dania, FL 33004