

AVATAR — SEA RAY



Builder: [SEA RAY](#)

Year Built: 1999

Model: Motor Yacht

Price: PRICE ON APPLICATION

Location: United States

LOA: 56' 0" (17.07m)

Beam: 16' 0" (4.88m)

Max Draft: 4' 6" (1.37m)

Our experienced yacht broker, Andrey Shestakov, will help you choose and buy a yacht that best suits your needs **Avatar — SEA RAY** from our catalogue. Presently, at Shestakov Yacht Sales Inc., we have a wide variety of yachts available on our sale's list. We also work in close contact with all the big yacht manufacturers from all over the world.

If you would like to buy a yacht **Avatar — SEA RAY** or would like help answering any questions concerning purchasing, selling or chartering a yacht, please call **+1(954)274-4435**

TABLE OF CONTENTS

TABLE OF CONTENTS	2
SPECIFICATIONS	5
Basic Information	5
Dimensions	5
Accommodations	5
Hull and Deck Information	5
Engine Information	5
DETAILED INFORMATION	6
Salon	6
Galley	6
Master Stateroom	6
VIP Stateroom, Starboard	7
Guest Port Stateroom	7
Crew Quarters	7
Flybridge	7
Electronics	8
Deck & Exterior	8
Cockpit	8
Electrical System	8
Engine Room	9
Exclusions	9
Disclaimer	9
PHOTOS	10
Salon	10
Salon	10
Salon	10
Salon	10
Salon	10

Salon	10
Custom Salon TV	11
Salon	11
Galley	11
Galley	11
Galley	11
Galley	11
Dinette	12
Master Stateroom	12
Master Stateroom	12
Master Stateroom	12
Master Head	13
Master Stateroom	13
Port Guest Stateroom	13
Starboard Guest Stateroom	13
Guest Head	14
Guest Head	14
Crew Quarters	14
Flybridge	14
Flybridge	15
Helm Electronics	15
Helm Seating	15
Flybridge	15
Flybridge	15
Flybridge	15
Flybridge	16
Cockpit	16
Cockpit	16
Cockpit	16

Cockpit	16
Cockpit	16
Engine Room	17
Engine Room	17
Engine Room	17
Engine Room	17
Engine Room	17
Engine Room	17
Engine Room	17
Engine Room	18
Engine Room	18
Bow	18
Bow	18
Bow Profile	18
Stern Profile	18
CONTACTS	19
Contact details	19
Telephones	19
Office hours	19
Address	19

SPECIFICATIONS

Basic Information

Category: Motor Yacht

Sub Category: Cruiser

Model Year: 1999

Year Built: 1999

Country: United States

Dimensions

LOA: 56' 0" (17.07m)

Beam: 16' 0" (4.88m)

Max Draft: 4' 6" (1.37m)

Accommodations

Total Cabins: 3

Hull and Deck Information

Hull Material: Fiberglass

Engine Information

Engines: 2

Manufacturer: Caterpillar

Model: 3406

Engine Type: Inboard

Fuel Type: Diesel

DETAILED INFORMATION

Salon

- Hide-A-Bed (sleeps 2)
- Port and starboard salon couches
- DVD player
- Carpet runners
- Hi/Low cocktail table
- Window treatments and blinds
- Storage
- Large sliding door wall with screen from cockpit
- Direct lighting
- Indirect lighting
- 50" Samsung flat screen TV

Galley

- Sub Zero refrigerator
- Sub Zero Freezer
- Wood flooring
- Sharp convection microwave
- Plenty of cabinetry and drawer storage
- Kenyon (3) burner range
- Exhaust fan
- Adjacent facing dinette
- Coffee maker
- Sink and faucet

Master Stateroom

- Island queen berth
- Vanity, mirrors, stool, cabinetry
- TV, VCR, Bose stereo,
- Hanging locker
- Ensuite head with cabinetry storage and enclosed shower
- Full length mirrors
- Drawers
- Direct lighting
- Indirect lighting
- Reading lights
- Deck hatch with screen and shade

VIP Stateroom, Starboard

- Full size berth
- Vanity with mirrors, storage, drawers, stool
- Under berth drawers
- TV/VCR
- Direct lighting
- Access to guest head
- Circular skylight
- Hanging locker
- Large mirrors
- Indirect lighting
- Reading lights

Guest Port Stateroom

- Upper and lower berths
- TV/VCR
- Hanging locker
- Washer/Dryer unit
- Direct lighting
- Indirect lighting
- Reading lights
- Deck hatch with screen and shade

Crew Quarters

- Single berth
- Electric head
- Sink and mirror
- Port hole

Flybridge

- Hardtop with four-sided enclosure
- U-shaped lounge seating forward with adjustable table
- Entertainment center
- U-line ice maker
- Tundra refrigerator
- Sink
- Carpeting
- Large bench seat aft of helm chairs

- Plenty of storage
- Molded in staircase to bridge
- AC/heat
- New helm chairs, 2015

Electronics

- Garmin 3010 C
- Garmin 5212
- Furuno Navnet (Plotter & Radar)
- (2) ICOM VHF radios
- Simrad AP300X autopilot
- Clarion stereo
- ST60 Ray Tri-Data
- RCL-1000 spotlight
- American bow thruster controls
- Bennett trim tab indicators
- Sea Ray system monitor

Deck & Exterior

- TNT hydraulic lifting platform (Rebuilt 2015)
- American bow thruster
- Glendinning shore cord, retrieval
- Fresh water washdowns
- Dual trumpet horns

Cockpit

- Aft seating
- Cockpit table
- Teak deck
- Sliding glass door w/screen to salon
- Haunch storage
- Engine room and lazarette access
- Hot/cold water shower
- Transom gate
- TV/phone connection
- Molded staircase to bridge with step storage

Electrical System

- Emergency battery parallel
- Generator-21kW Westerbeke (1200 hours)
- Cruisair reverse cycle AC/heat
- (4) 8D maintenance free batteries
- 50 amp 240 volt power cord with Glendinning cablemaster
- 50 amp 120 volt power cord with Glendinning cablemaster
- Phone/TV connection in cockpit

Engine Room

- Twin 3406 Caterpillar 800hp
- Twin Disc transmission
- Dripless shaft seals
- Reverso oil change system
- Auto fire suppression
- 30 Amp battery charger
- Racor fuel filters

Exclusions

Owner's personal belongings.

Disclaimer

The Company offers the details of this vessel or yacht in good faith but cannot guarantee or warrant the accuracy of this information nor warrant the condition of the vessel. A buyer should instruct his representatives, agents, or his surveyors, to investigate such details as the buyer desires validated. This vessel or yacht is offered subject to prior sale, price change, or withdrawal without notice.

PHOTOS

Salon



Salon



Salon



Salon



Salon



Salon



Salon



Custom Salon TV



Galley



Galley



Galley



Galley



Dinette



Master Stateroom



Master Stateroom



Master Stateroom



Master Stateroom



Master Head



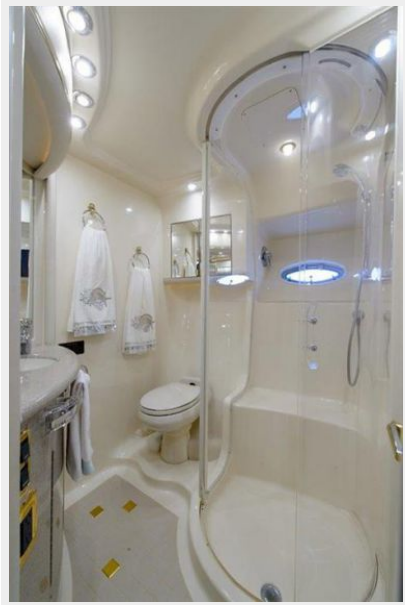
Port Guest Stateroom



Starboard Guest Stateroom



Guest Head



Guest Head



Crew Quarters



Flybridge



Helm Electronics



Flybridge



Flybridge



Helm Seating



Flybridge



Flybridge



Flybridge



Cockpit



Cockpit



Cockpit



Cockpit



Cockpit



Engine Room



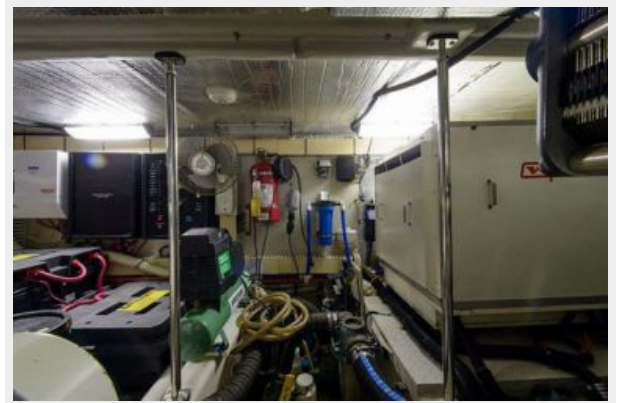
Engine Room



Engine Room



Engine Room



Engine Room



Engine Room



Engine Room



Engine Room



Bow



Bow



Bow Profile



Stern Profile



CONTACTS

Andrey Shestakov, leading yacht broker of the sales department of Shestakov Yacht Sales Inc. Shestakov Yacht Sales Inc., the official representative of the Miami/Fort Lauderdale FL headquarters.

Contact details

Email: andrey@shestakovyachtsales.com

Web: shestakovyachtsales.com/en/

Telephones

USA: +1(954)274-4435

Office hours

Monday – Saturday: **9:00 - 21:00** EDT

Sunday: **closed**

Address



Harbour Towne Marina, 850 NE 3rd St,
STE 213, Dania, FL 33004