

LIVIN THE DREAM — RINKER



Builder: RINKER

Year Built: 2013

Model: Cruiser

Price: PRICE ON APPLICATION

Location: United States

LOA: 34' 0" (10.36m)

Beam: 11' 4" (3.45m)

Min Draft: 1' 10" (0.56m)

Max Draft: 2' 10" (0.86m)

Our experienced yacht broker, Andrey Shestakov, will help you choose and buy a yacht that best suits your needs **Livin The Dream — RINKER** from our catalogue. Presently, at Shestakov Yacht Sales Inc., we have a wide variety of yachts available on our sale's list. We also work in close contact with all the big yacht manufacturers from all over the world.

If you would like to buy a yacht **Livin The Dream — RINKER** or would like help answering any questions concerning purchasing, selling or chartering a yacht, please call **+1(954)274-4435**

TABLE OF CONTENTS

TABLE OF CONTENTS	2
SPECIFICATIONS	5
Overview	5
Basic Information	5
Dimensions	6
Speed, Capacities and Weight	6
Accommodations	6
Hull and Deck Information	6
Engine Information	6
DETAILED INFORMATION	7
Cabin	7
Cabin/Main Salon/Cruisers	7
Galley	7
Entertainment	8
Helm/NAV & Electronics	8
Engine / Electrical	9
Forward Stateroom/Cabin	9
Head	9
Aft Stateroom/Cabin	9
Cockpit	10
Deck/Hull/Mechanical	10
Canvas	11
Broker's Comments	11
Exclusions	11
Disclaimer	11
PHOTOS	12
Manufacture Photo	12
Salon	12

Salon Table	12
Galley	12
Galley-Like New Appliances	13
Manufacture Photo	13
Main Distribution Panel	13
Galley-Stainless Sink	13
Teak Steps	14
Forward Berth	14
Head	14
Aft Stateroom	14
Main Helm	15
Helm Seating	15
Thigh Ris Double Helm Chair	15
Joystick and Skyhook	15
Walk Through Windshield	15
Port Seating	15
SAT Receiver and Radar	16
New Garmin 7610 XSV 10" Screen	16
Manufacture Photo	16
Hardtop	16
Cockpit Seating	16
Like New Wet Bar	16
Blender Option	17
Engine Room	17
Bravo 3 Drives	17
Bravo 3 Drives	17
Spotlight	18
Forward Deck with Spotlight	18
Swim Platform	18

Aft Seating	18
Transom Storage	18
Transom	18
Underwater Lights	19
Underwater Lights	19
Forward View	19
Pop-up Cleats	19
Starboard on Lift	20
Port Side	20
Starboard Forward Quarter	20
Starboard Aft Quarter	20
Like New Gelcoat	20
New Black Camper Canvas	20
Interior Layout	21
Manufacture Photo	21
Cockpit Layout	21
CONTACTS	22
Contact details	22
Telephones	22
Office hours	22
Address	22

SPECIFICATIONS

Overview

Joy Stick Axius Docking and “Skyhook”

Hardtop

Like New with only 80 Hours

Brand New Garmin 7610XSV 10” GPS / Chartplotter / Radar / Sonar

Upgraded 377 MAG Engines with Bravo 3 Drives

Brand New Intellian Satellite TV Receiver

Just Serviced and New Batteries

Brand New Factory Black Camper Canvas

This vessel is equipped with **Joy Stick Axius Docking** and **“Skyhook”**. She is in immaculate condition and has **only 80 hours on on her upgraded 377 MAG engines with Bravo 3 drives**. The black raked hull shines like new and the entire vessel has just been detailed. This 340 is loaded! Major options include: Underwater lights, Cockpit blender, icemaker and fridge, New black canvas, Hardtop, **New Garmin 7610XSV 10” GPS / Chartplotter / Radar / Sonar**, Remote spotlight, Flatscreen TVs in both staterooms, Teak sole on swim platform and in cockpit, Transom shower, Removable cockpit grill, A/C & heat, Elec. 2 burner stove, 5 KW Kohler generator, Remote Spotlight, Vacuflush head, Windlass, Bow sunpads, Salon wood flooring and more! **This has to be the best equipped and cleanest one in the county. She has been lift kept and pampered. Call for your easy showing today.**

Basic Information

Category: Cruiser

Sub Category: Express

Model Year: 2013

Year Built: 2013

Country: United States

Vessel Top: Hardtop

Dimensions

LOA: 34' 0" (10.36m)

Beam: 11' 4" (3.45m)

Min Draft: 1' 10" (0.56m)

Max Draft: 2' 10" (0.86m)

Speed, Capacities and Weight

Displacement: 14100 Pounds

Water Capacity: 40 Gallons

Holding Tank: 47 Gallons

Fuel Capacity: 168 Gallons

Accommodations

Total Cabins: 2

Total Berths: 1

Total Heads: 1

Hull and Deck Information

Hull Material: Fiberglass

Engine Information

Engines: 2

Manufacturer: Mercruiser

Model: 377 MAG

Engine Type: Inboard

Fuel Type: Gas/Petrol

DETAILED INFORMATION

Cabin

- 12 Volt DC Outlet
- 110 Volt Outlet
- Carbon Monoxide Safety Alarm
- Custom Cherry Cabinetry & Doors
- Door Sliding Cabin Door w/ Lock
- Entertainment Systems Cabinet
- Fabrics, Designer Champagne (260 / 280), Midnight & Midnight II
- Hardware Brushed Nickel Knobs and Lights
- Hardware Stainless Steel Door Handles and Thresholds
- Lighting Indirect
- Lighting Reading
- Port Lights w/ Opening Screens
- Vinyl and Fabrics Stain Resistant w/Enhanced Colors
- Berth "V" w/Storage and Shelving
- Headboard Mirrored
- Storage Hanging Clothes Locker
- Port Light Opening w/Ventilating Screen
- Privacy Curtain

Cabin/Main Salon/Cruisers

- AC / Heat 12,000 BTU
- Seating - Couch / Custom, Full-Sized and Converts to Double Berth
- Storage -Under Berth, Seats and Cabinets
- Table - Dinette/Wood, w/Designated Storage

Galley

- Staron - Lids and Surfaces
- Stove - 2 Burner Electric
- Staron® Lids and Surfaces
- Microwave Oven
- Sink Stainless Steel, Pressurized Water
- Storage Wood Cabinets Under and/or Above Sink
- Storage Wood Racks/Shelves

Entertainment

- NEW Intellian SAT TV Receiver
- Two Flatscreen TV's
- Stereo Amp - High Power
- Cable TV Connections DVD Player -Flat screen TV -Main Cabin
- MP3/iPod/Aux-in -
- Stereo Input Stereo Remote w/LCD Digital Display - Transom
- DVD/TV Flat screen Main Cabin/Salon
- Sirius® Satellite Radio
- Speaker Covers, Stainless Steel Cockpit
- Stereo, Premium AM/FM CD Player w/Speakers
- Stereo Remote w/LCD Digital Display Helm

Helm/NAV & Electronics

Brand New Garmin 7610 XSV Chartplotter / Radar / Sonar

Skyhook

Axius Joystick Docking System

- Bilge Blower
- Compass
- Anchor Windlass Controls
- Engine Synchronizer
- GPS - Color
- MerCruiser DTS
- Spotlight - Remote Controls
- 12 Volt DC Outlet
- Backlit Marine Instrumentation
- Bilge Pump Automatic (2)
- Chart Storage
- Colored Dash and Helm Accents
- Digital Depth Gauge
- Faria® Gauges w/Jeweled Faces and Stainless Steel Bezels
- Horn High Pitched, Trumpet Style
- Steering Power w/ 5 Position Tilt
- Throttle Control w/Trim-Tilt
- Trim Tabs w/LED Indicators at Helm
- VHF Radio w/Antenna

Engine / Electrical

- Dockside Power - "It's Shore Choice" Dual Side Power System
- Fuel Shut-off Valves
- Generator - 5 KW - Low CO and Sound Shield
- AC/DC Breaker Panel
- Dockside Power w/ 50' Power Cord
- Engine Room Lighting

Forward Stateroom/Cabin

- Fabrics, Designer - Champagne, Midnight and Midnight II
- Lighting - Sconce or Custom
- Mattress - Custom w/Memory Foam
- Mattress Cover - Designer Fabrics and Zipper Fitted
- Port Lights - Opening w/Ventilating Screens
- Pillow Package
- Privacy Curtain

Head

- AC / Heat Vents
- Corian - Solid Counter Surfaces
- Toilet, TECMA Easy-Flush - Porcelain Toilet w/Holding Tank
- 110 Volt Outlet
- Flooring Textured Tile Finish
- Port Light w/Ventilating Screen
- Shower Hot and Cold
- Sink with Vanity, Mirror and Towel Bar
- Water Heater/Exchanger 6 Gallons

Aft Stateroom/Cabin

- 110 Volt Outlet Lighting
- Indirect Seating
- Large Couch
- Converts to Double Berth Standing Height Changing Area Storage
- Hanging Clothes Locker Storage
- Under Berth

Cockpit

- 110- Volt Outlet
- Blender -Built-in
- Ice Maker -Built-in (*Ice Maker not available with Refrigerator)
- Refrigerator / Freezer - AC/DC (*Refrigerator not available with Ice Maker)
- Seating - Aft "U" Shaped Seating
- Carpet Snap-in, Stain Resistant
- Color Scheme Mystic White with Metallic Alloy Accents
- Corian® Lids and Surfaces
- Drink Holders Stainless Steel
- Footrests Molded Helm
- Integrated Trash Container Composite, Removable
- LED Cockpit Lighting
- Seating Double Helm w/Flip-up Bolster
- Seating Port Side Lounger Seating Swim Platform "Rumble Seat" with Stainless Steel Drink Holders
- Shower Transom, Pressurized
- Sink w/Refreshment Center, Pressurized Water
- Storage Under Seat
- Table Stowable
- Vinyl GX 48 Treated w/Stain and Mildew Resistance

Deck/Hull/Mechanical

- Automatic Fire Extinguishing System
- Electric Engine Hatch Lift
- Anchor Windlass - 130' line, 30' chain
- Anchor Windlass Foot Controls, Bow
- Arch - Folding Capability for Transportation
- Spotlight - Rail Mounted Remote
- Storage - Transom Trunk
- Anchor Roller Stainless Steel with Storage Locker and Cradle
- Cleats Stainless Steel
- Cockpit Liner Fiberglass
- Deck Access Walk-thru w/Molded-In Steps
- Deck Hatch Large Vista, Low Profile and Screened
- National Marine Manufacturers Association Certified
- Non-Skid Molded Deck Surfaces
- Stainless Steel Bow Rail, Rubrail and Hardware
- Storage Mooring Line
- Swim Platform w/Stainless Steel Boarding Ladder and Pull-up Cleats
- Walk-thru Transom Entrance with Latching Gate

- Water Dockside Inlet
- Windshield Curved w/Walk-thru, Tinted Safety Glass
- Windshield Wiper

Canvas

- Brand NEW Black Camper Canvas ordered from Rinker

Broker's Comments

This vessel is turn-key and could almost be mistaken for a new boat.

Exclusions

Owner's personal belongings.

Disclaimer

The Company offers the details of this vessel or yacht in good faith but cannot guarantee or warrant the accuracy of this information nor warrant the condition of the vessel. A buyer should instruct his representatives, agents, or his surveyors, to investigate such details as the buyer desires validated. This vessel or yacht is offered subject to prior sale, price change, or withdrawal without notice.

PHOTOS

Manufacture Photo



Salon



Salon Table



Galley



Galley-Like New Appliances

Manufacture Photo



Main Distribution Panel



Galley-Stainless Sink



Teak Steps



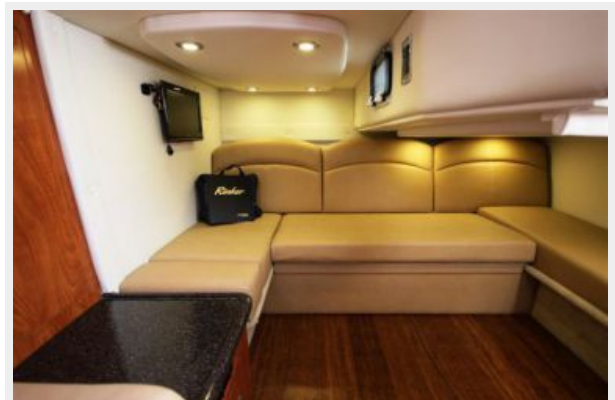
Forward Berth



Head



Aft Stateroom



Main Helm



Helm Seating



Thigh Ris Double Helm Chair



Joystick and Skyhook



Walk Through Windshield



Port Seating



New Garmin 7610 XSV 10" Screen



SAT Receiver and Radar



Hardtop



Manufacture Photo



Cockpit Seating



Like New Wet Bar



Blender Option



Engine Room



Bravo 3 Drives



Bravo 3 Drives



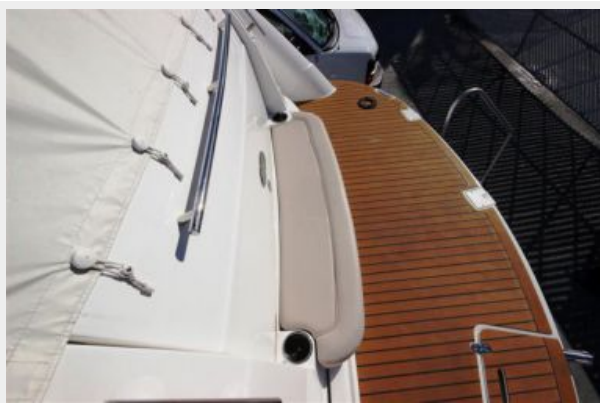
Forward Deck with Spotlight



Spotlight



Aft Seating



Swim Platform



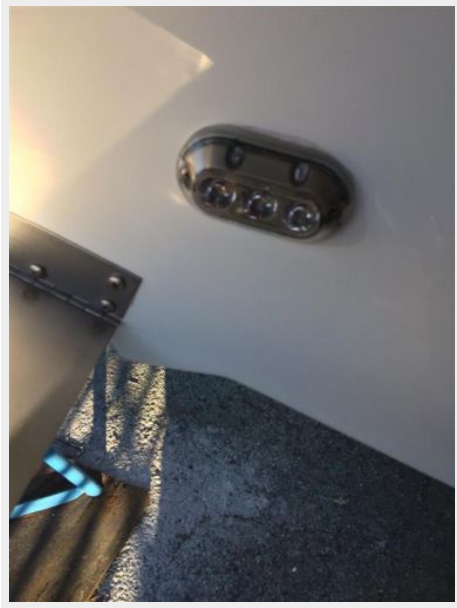
Transom Storage



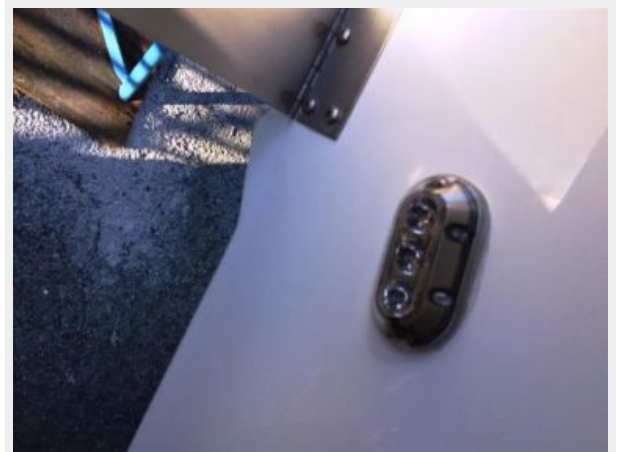
Transom



Underwater Lights



Underwater Lights



Pop-up Cleats



Forward View



Port Side



Starboard on Lift



Starboard Forward Quarter



Starboard Aft Quarter



Like New Gelcoat



New Black Camper Canvas



Manufacture Photo



Interior Layout



Cockpit Layout



CONTACTS

Andrey Shestakov, leading yacht broker of the sales department of Shestakov Yacht Sales Inc. Shestakov Yacht Sales Inc., the official representative of the Miami/Fort Lauderdale FL headquarters.

Contact details

Email: andrey@shestakovyachtsales.com

Web: shestakovyachtsales.com/en/

Telephones

USA: +1(954)274-4435

Office hours

Monday – Saturday: **9:00 - 21:00** EDT

Sunday: **closed**

Address



Harbour Towne Marina, 850 NE 3rd St,
STE 213, Dania, FL 33004