

GENESIS — FERRETTI



Builder: FERRETTI

LOA: 80' 0" (24.38m)

Year Built: 2011

Beam: 20' 8" (6.30m)

Model: Motor Yacht

Price: PRICE ON APPLICATION

Location: United States

Our experienced yacht broker, Andrey Shestakov, will help you choose and buy a yacht that best suits your needs **Genesis — FERRETTI** from our catalogue. Presently, at Shestakov Yacht Sales Inc., we have a wide variety of yachts available on our sale's list. We also work in close contact with all the big yacht manufacturers from all over the world.

If you would like to buy a yacht **Genesis — FERRETTI** or would like help answering any questions concerning purchasing, selling or chartering a yacht, please call **+1(954)274-4435**

TABLE OF CONTENTS

TABLE OF CONTENTS	2
SPECIFICATIONS	3
Basic Information	3
Dimensions	3
Speed, Capacities and Weight	3
Accommodations	3
Hull and Deck Information	3
Engine Information	3
DETAILED INFORMATION	4
Additional Specs, Equipment and Information	4
Exclusions	10
Disclaimer	10
PHOTOS	11
CONTACTS	21
Contact details	21
Telephones	21
Office hours	21
Address	21

SPECIFICATIONS

Basic Information

Category: Motor Yacht

Model Year: 2012

Year Built: 2011

Country: United States

Dimensions

LOA: 80' 0" (24.38m)

Beam: 20' 8" (6.30m)

Speed, Capacities and Weight

Displacement: 143300 Pounds

Water Capacity: 349 Gallons

Fuel Capacity: 1783 Gallons

Accommodations

Total Cabins: 4

Total Heads: 4

Captain Cabin: True

Crew Cabin: 2

Crew Heads: 2

Hull and Deck Information

Hull Material: Fiberglass

Engine Information

Manufacturer: MTU

Model: 12V 2000 M94

Engine Type: Inboard

Fuel Type: Diesel

DETAILED INFORMATION

Additional Specs, Equipment and Information

Major Price Reduction!!!

Innovation matched with a classic-contemporary design, the perfect recipe of Ferretti Yachts 800, penciled by architect Gianni Zuccon from Studio Zuccon International Project in collaboration with the research center of the Group. The result is a yacht featuring wide interior spaces, with a layout generally adopted in larger vessels, blended with catchy external lines, enhanced by the use of color, in which wide windows characterize the external design, plunging interiors into an amazing quantity of light. The external profile of Ferretti Yachts 800 features two distinguishing characteristics: the use of the bronze color and the graphic lines of windows, which alternate curvy and smooth lines with sharp cuts.

Don't miss your opportunity to own a one-of-a-kind yacht that will surely exceed your expectations. A-SEA Converter she can handle US and European power.

SALON

Wood Flooring throughout Main Deck of yacht

Manual Sliding Glass Door

Opening Aft Window

White Leather L-Shaped Sofa to STBD

White Leather Sofa to PORT

White Leather Chair Aft

Wood Topped Coffee / Cocktail Table

Wood Topped Dinning table for 8

Bose Lifestyle System

Samsung 42" Smart TV on Electric Lift

Sony BluRay

DVD Player

Remote Keyboard for TV

Electrically Operated Window Shades (Port & Stbd)

Isotherm Refrigerator

FWD DINETTE & BREAKFAST BAR

Three Adjustable Stools

Built in Table with Fore & Aft Seating

Storage Hassock

Broan Elite Trash Compactor

Staircase to Lower Accommodation Deck

Staircase To Fly Bridge

GALLEY

GE Monogram Advantium 120 Convection Oven –Microwave

GE Dual Door Refrigerator Freezer w/ Ice & Water Dispenser

Gaggenau 5 Burner Ceran Top Electric Stove

Miele Optima Dish Washer F

Fusion Stereo / DVD Player/ iPod Player

OWNERS STATEROOM

Queen Sized Bed

Samsung TV

Direct TV Receiver

Fusion Stereo/DVD Player/iPod Player

Electronic Safe

Ensuite

Head w/ Shower Stall

Vanity

Built in Lounge

STBD GUEST STATEROOM

Criss-Cross Over/Under Beds

Samsung TV

Direct TV Receiver

Fusion Stereo/DVD Player/iPod Player

Ensuite

Head w/ Shower Stall

PORT GUEST STATEROOM

Queen Sized Bed

Samsung TV

Direct TV Receiver

Fusion Stereo/DVD Player/iPod Player

Ensuite

Head w / Shower Stall

VIP STATEROOM

Queen Sized Bed

Samsung TV

Direct TV Receiver

Fusion Stereo/DVD Player/iPod Player

Electronic Safe

Ensuite

Head w/ Shower Stall

FLY BRIDGE

Upper Helm

Furuno FI50

Digital Depth & Speed Display

Furuno Nav Net 3D Display –Radar (120nm), Chart Plotter & Depth

Furuno Nav Pilot Control

Furuno VHF Radio w/ Remote Speaker

Quick Chain Counter

Anchor Windlass Remote Control

ZF Electronic Engine Controls

Trim Tab Indicator

Trim Tab Controls

Rudder Angle Indicator

Bow & Stern Thruster Controls

Remote Search Light Control

Forward Search Light (Remote Controlled)

12v plug

VDO P & S Engine RPM Analog Gauges

VDO P & S Engine Temp. Analog Gauges

Sun Pad

Hatch Door to internal Staircase

Wet Bar

Vitrifrigo Refrigerator

Icerette Ice Maker

Gaggenau Two Burner Electric Grill

Hard Top w/ Electric Sun Roof

(2) Aft Flood Lights

Spot Light

KVH SAT-Dome for TV & Internet

KVH SATDome (dummy)

EPIRB

Sun Bed

(2) Eurovinyl 6 man Life Raft

Besenzoni 600 kg Davit

GPS Antenna

Open Radar Array

(2) VHF Antenna

GARAGE / BEACH HOUSE

Electro Hydraulic garage Door that opens down to form a large beach club / swim platform

Canvas screen to hide garage contents when door is open.

(1) Electrically operated Swim Ladder

100 Amp Shore Power Cable on Electric Reel

100 Amp to 2 x 50 Amp Adapter

Electro Hydraulic Gangway w/ Remote Control

Dockside Fresh Water inlet

Transom Fresh water Shower

Fresh Water Wash Down Connector

Underwater lights - (2) stern - (2) each side

AFT DECK

Port & Starboard Aft Warping Winches with foot controls

Starboard Fresh Water hand wash

Teak Table w/ Storage

Transom Lounge

Aft Deck Control Station w/ ZF Engine Controls & Bow / Stern Thruster Controls

Raritan Icemaker

Engine Room CO2 Controls

Battery Controls for Engines & House Batteries –Battery Parallel Switch

Touch Pad Controls for Garage Door, Gangway, Swim Ladder, Under Water Lights (2) & Various outside Lights

CCTV Camera

FORE DECK

Two Lofrans Winches with Chain Rode, Two Plow Anchors and Wired Remote Control

Fresh Water Wash Down

UShaped

Sette w/ Table

Large Sun Pad

ENGINE ROOM

(2) MTU V12 2000 M94

(2) Kohler 23kW Generators - Port Gen: 24.5 Hours Stdb Gen: 105 Hours

Asea Frequency Converter 120/240 V –100 Amp Single Phase

(2) Mitsubishi ARG Stabilizers

(2) Auto Bilge Pumps

(1) Manual Bilge Pump

(5) Master Volt Battery Chargers

(2) Master Volt Inverter/Chargers

Dometic Chilled Water Air Conditioning System

Idromar WaterMaker

Headhunter Fresh Water Pump

Fireboy Fire Suppression System

SAFETY EQUIPMENT

(2) Eurovinil SelfInflatable 6 Person Life rafts

(21) Drayer CE 0158 Smoke Hoods

(1) Orange Solas Type 74 Life Rings

(13) Portable Fire Extinguishers located throughout Yacht

Fire Boy CO2 Fire Extinguishing System (Engine Room)

More details

Hull material: Fiberglass - VTR

Hull type: Other

Boat type: Motor Yachts

Transmission type: Inboard

Exclusions

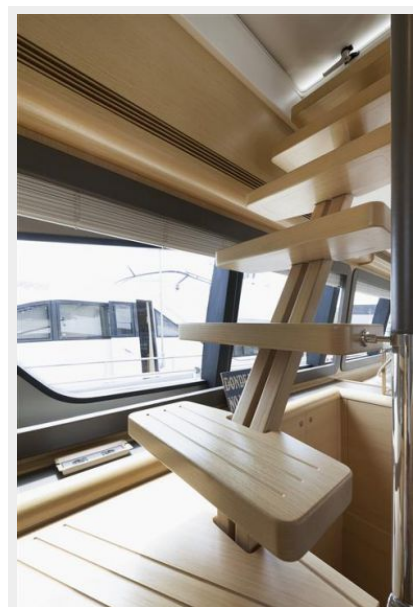
Owner's personal belongings.

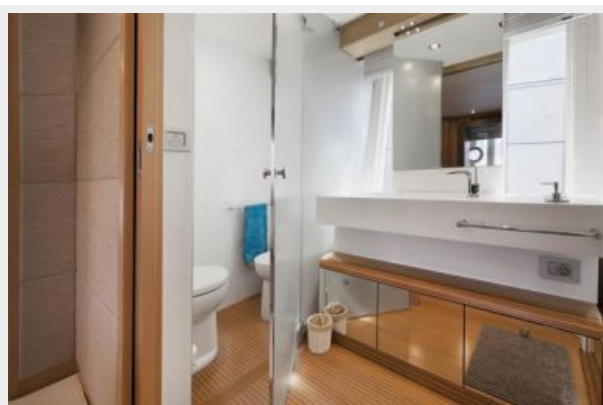
Disclaimer

The Company offers the details of this vessel or yacht in good faith but cannot guarantee or warrant the accuracy of this information nor warrant the condition of the vessel. A buyer should instruct his representatives, agents, or his surveyors, to investigate such details as the buyer desires validated. This vessel or yacht is offered subject to prior sale, price change, or withdrawal without notice.

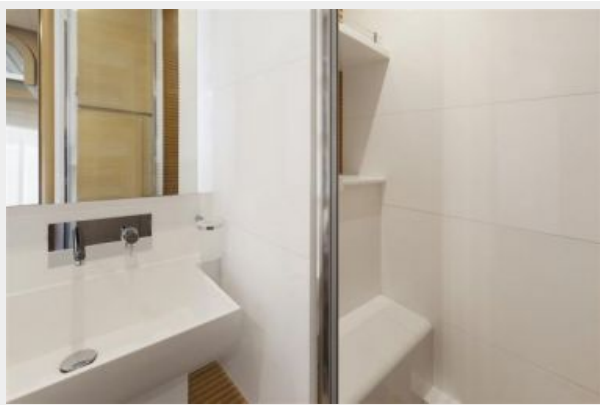
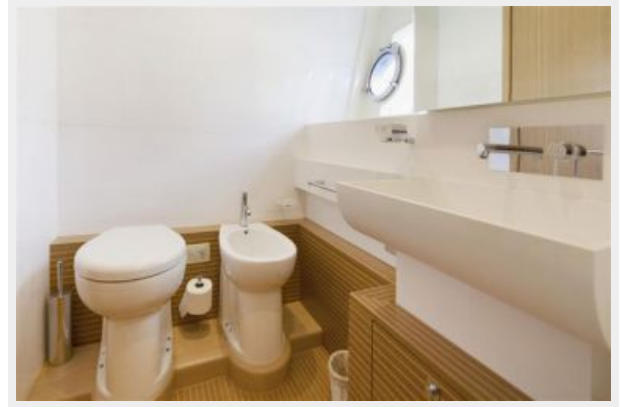
PHOTOS

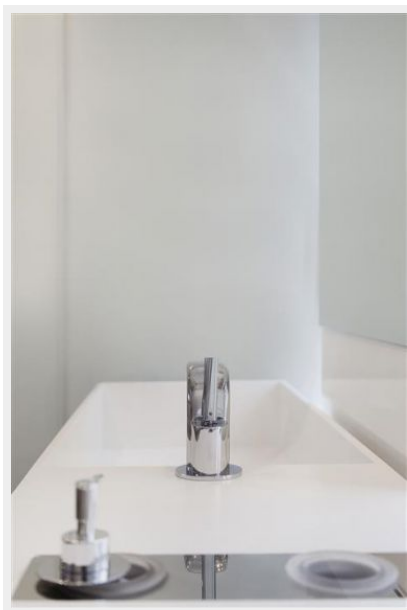




















CONTACTS

Andrey Shestakov, leading yacht broker of the sales department of Shestakov Yacht Sales Inc. Shestakov Yacht Sales Inc., the official representative of the Miami/Fort Lauderdale FL headquarters.

Contact details

Email: andrey@shestakovyachtsales.com

Web: shestakovyachtsales.com/en/

Telephones

USA: +1(954)274-4435

Office hours

Monday – Saturday: **9:00 - 21:00** EDT

Sunday: **closed**

Address



Harbour Towne Marina, 850 NE 3rd St,
STE 213, Dania, FL 33004