

MID LIFE CRY SEAS — SEA RAY



Builder: SEA RAY

Year Built: 1998

Model: Cruiser

Price: PRICE ON APPLICATION

Location: United States

LOA: 37' 0" (11.28m)

Beam: 14' 3" (4.34m)

Max Draft: 3' 1" (0.94m)

Our experienced yacht broker, Andrey Shestakov, will help you choose and buy a yacht that best suits your needs **MID LIFE CRY SEAS — SEA RAY** from our catalogue. Presently, at Shestakov Yacht Sales Inc., we have a wide variety of yachts available on our sale's list. We also work in close contact with all the big yacht manufacturers from all over the world.

If you would like to buy a yacht **MID LIFE CRY SEAS — SEA RAY** or would like help answering any questions concerning purchasing, selling or chartering a yacht, please call **+1(954)274-4435**

TABLE OF CONTENTS

TABLE OF CONTENTS	2
SPECIFICATIONS	4
Overview	4
Basic Information	4
Dimensions	4
Speed, Capacities and Weight	4
Accommodations	4
Hull and Deck Information	4
Engine Information	5
DETAILED INFORMATION	6
Accommodations	6
Master Stateroom, Aft	6
Guest Stateroom, Forward	6
Guest Stateroom, Port	7
Salon	7
Master Head, Aft	7
Guest Head, Forward	7
Galley	8
Helm / Electronics and Navigation	8
Deck	9
Engine and Mechanical Equipment	9
Electrical System / Equipment	10
Additional Features / Equipment	11
Exclusions	11
Salesman's Comments	11
Exclusions	11
Disclaimer	11
PHOTOS	13

Profile 2	13
Master Stateroom 1	13
Master Stateroom 2	13
Master Stateroom 3	13
Guest Stateroom 2 - Cabinets in Stateroom	14
Guest Stateroom 1	14
Guest Stateroom, Port 1	14
Guest Stateroom, Port 2	14
Salon 1	15
Salon 2	15
Salon 3	15
Salon 4 - TV	15
Master Head 1	15
Master Head 2 - Shower	15
Guest Head	16
Galley 1	16
Galley 2	16
Galley 3	16
Helm / Electronics & Navigation 1	16
Helm / Electronics & Navigation 2	16
Deck 2 - Underwater Lights	17
Deck 1 - Bow	17
Rear Profile	17
CONTACTS	18
Contact details	18
Telephones	18
Office hours	18
Address	18

SPECIFICATIONS

Overview

This is a well maintained, low hour CAT powered Aft Cabin! She is ready for her next family's adventures.

Basic Information

Category: Cruiser

Sub Category: Cabin Cruiser

Model Year: 1998

Year Built: 1998

Country: United States

Vessel Top: Hardtop

Dimensions

LOA: 37' 0" (11.28m)

Beam: 14' 3" (4.34m)

Max Draft: 3' 1" (0.94m)

MFG Length: 38' 2" (11.63m)

Speed, Capacities and Weight

Displacement: 23800 Pounds

Water Capacity: 100 Gallons

Holding Tank: 55 Gallons

Fuel Capacity: 300 Gallons

Accommodations

Total Cabins: 3

Total Berths: 6

Sleeps: 6

Total Heads: 2

Hull and Deck Information

Hull Material: Fiberglass

Deck Material: Fiberglass

Engine Information

Engines: 2

Manufacturer: Caterpillar

Model: 3116TA

Engine Type: Inboard

Fuel Type: Diesel

DETAILED INFORMATION

Accommodations

Sleeps five owners and guests in three Staterooms plus slide out sofa bed sleeps one for a total of six berths. One Master Head with shower, one Guest Head with shower. The Sea Ray 370 Aft Cabin has an extremely generous layout with a large interior for it's size. She has a three Stateroom - two Head layout making for very comfortable accommodations. The Salon is open with an L-shaped convertible settee to port and a barrel chair to starboard. Aft is an entertainment center featuring a flat-screen TV. Aft of the Salon is a Master Stateroom featuring an island berth, an abundance of storage including drawer storage and cedar-lined hanging lockers and an en-suite Head. The Head features a vacu-flush Head system, stall shower and vanity. The forward Guest Stateroom features a double island berth, storage drawers and hanging lockers. This comfortable Stateroom is forward of the Galley and isolated from the Master Stateroom for comfortable guest accommodations. The Port Guest Stateroom features a twin bed, hanging locker and a built-in storage compartment.

Master Stateroom, Aft

- Full length mirror
- Built-in night table
- Storage under bed
- Cedar-lined closets
- Vanity w/ corian counter top
- Aft kick-out window drape trim
- Abundant storage (drawers & cabinets)
- Cedar-lined hanging locker w/ mirrored doors
- Queen berth w/ pillows, sheets & coordinated spread

Guest Stateroom, Forward

- Mirror
- Privacy door
- Storage cabinets
- Side shelf storage
- Floor storage compartments
- Drawers & storage under bed
- Cedar-lined hanging lockers w/ mirrored doors
- Full-size pedestal bed w/ pillows, sheets & coordinated spread

Guest Stateroom, Port

- Twin bed w/ pillow & sheets
- Built-in storage compartment
- Hanging locker w/ mirrored door

Salon

- Barrel chair
- (8) Throw pillows
- 12v Indirect lighting
- Handcrafted wood trim
- Television cord w/ inlet
- 12v Directional lighting
- 120v Outlets throughout
- Mini blinds w/ drape trim
- Acrylic sliding Cabin door
- Gas-assisted bilge hatches
- Deep Pile Marine carpeting
- Dining table / Cocktail table
- Antenna & TV coax to dockside
- 20" Color TV w/ VCR & antenna
- Interior Sunbrella carpet runners
- Granite colored counter tops & tables
- L-shaped sofa w/ storage below w/ electrically operated slide-out bed
- 12v Clarion Stereo system with AM / FM radio, cassette player, amplifier & (8) speakers with Bridge remote control

Master Head, Aft

- Privacy door w/ mirror
- Stainless steel handrail
- Medicine cabinet w/ mirror
- Holding tank level indicators
- Corian vanity top w/ sink, storage
- Vacuflush head w/ fiberglass settee lid
- Shower w/ seat, adjustable shower wand & bifold door

Guest Head, Forward

- Privacy door

- Pull-out shower wand
- Stainless steel handrail
- Medicine cabinet w/ mirror
- Holding tank level indicators
- Corian vanity top w/ sink & storage
- Vacuflush head w/ fiberglass settee lid

Galley

The Galley is spacious and open and provides a lot of storage and space.

- Bottle storage
- Porcelain sink
- Bottle storage
- Vinyl floor w/ hatch
- 120v / 12v Lighting
- (2) AC Power outlets
- Stainless steel stove handrail
- 120v / 12v AC / DC refrigerator / freezer
- Sharp microwave oven / convection oven
- Flush-mount three-burner, electric cook top
- Black and Decker Spacemaker coffee maker
- Garbage chute w/ concealed removable trash can
- Fiberglass countertop w/ Corian cutting board & Grohe designer faucet
- Galley storage & drawers w/ designated glass & plate storage & cutlery insert

Helm / Electronics and Navigation

- Ritchie Compass
- Concealed dual horns
- Engine synchronizer gauge
- Tachometers w/ hour meters
- Raytheon NAV 398 GPS / Loran
- Dual gear shift & throttle controls
- Raytheon Ray Pilot 650 auto pilot
- Garmin 2010C GPS / Chart Plotter
- Raytheon R11XX Raster scan radar
- Raytheon Ray 210 VHF transceiver
- Clarion stereo system w/ Flybridge remote
- Upgraded Raymarine radar to go w/ the C-120
- Upgraded Raymarine C-120 color chart plotter
- ACR remote controlled spot light w/ Flybridge remote
- Raytheon Ray Chart 601XX electronic charting system

- Custom Sea Ray backlit instrumentation w/ low glare blue night lighting

Deck

- Courtesy lights
- Transom shower
- Bimini enclosure
- Beverage holders
- Windshield cover
- Bimini top & boot
- Windlass w/ anchor
- Canvas storage bag
- Ice maker (aft Deck)
- Dockside water inlet
- 12v Receptacle at Bridge
- Fresh water inlet regulator
- Molded Bridge access steps
- Multi-color under water lights
- (2) Adjustable Captain's chairs
- Stainless steel Bridge safety rails
- Tinted tempered glass windshield
- Extended swim platform w/ shower
- Fiberglass hardtop w/ full enclosure
- Port & starboard acrylic entrance doors
- Sliding Cabin Deck windows & screens
- Forward facing sun lounger & bench seat
- Center Helm station w/ room for electronics
- Fresh water wash down w/ hot & cold Cockpit shower
- Wet bar w/ sink, trash receptacle, grab handles, beverage holder & bottle storage cabinet

Engine and Mechanical Equipment

- Bilge lights
- Zinc Hull plates
- Bonding system
- Engine drip sumps
- Sea water strainers
- Hydraulic trim tabs
- Engine synchronizer
- Emergency start system
- Halon fire control system
- (2) Electric bilge blowers

- (3) Automatic bilge pumps
- Underwater exhaust system
- Turbocharged / Aftercooled
- Remote circuit breaker panel
- Hydraulic steering w/ tilt wheel
- 1 1/2" Stainless steel prop shafts
- Cabin high water alarm & pump
- Inline 6 cylinder 4-Stroke diesel
- 6.6L (402 cu. inch) displacement
- Manganese bronze rudders & struts
- Seacocks on all under water fittings
- (2) High water bilge alarm & pumps
- 30,000 BTU Air conditioning / heating
- Lube oil system (refill) - 25.0L (6.6 gal.)
- Cooling system capacity - 28.0L (7.4 gal)
- Dripless shaft logs w/ extra seal carrier kit
- Water, oil & transmission oil engine alarms
- Racor filters / heat exchanger & fuel shut-off valves
- 105 mm x 127 mm (4.13 in. x 5.0 in.) bore & stroke
- (2) Automatic shower sump pumps & float switches
- Twin 350 hp. Diesel I/B 1999 CAT 3116TA's w/ 750 hrs.
- 55-Gallon Head system holding tank w/ dockside pump-out
- Pressure water system & 11 gallon water heater w/ exchanger
- Aluminum fuel tanks w/ remote fuel filters, anti-siphon valves & electric senders
- Backlit switch panel w/ illuminated weatherproof rocker switches & dimmer control

Electrical System / Equipment

- 5kW Onan generator
- Systems Monitor Panel
- Main DC breaker panel
- Crossover charging system
- Ground fault-protected outlets
- 120v / 40amp / 12v Converter
- (2) 30A 125V Shore power inlet
- (2) Zinc Saver galvanic isolators
- (4) Batteries w/ boxes & switches
- AC / DC Electrical distribution panel
- Heart interface link 10 battery monitor
- Color-coded wiring w/ chafe protection
- 50amp Electronics circuit w/ ground plate
- Dual 30amp / 12v / 60 cycle dockside power w/ 50' cord & adapter

Additional Features / Equipment

- Boot stripes
- Bottom paint
- Navigation lights
- Arctic White gel coat
- Gel coated bilge area
- Integral Deck ventilators
- Anchor rope storage w/ hatch
- Insulated engine compartment
- Stainless steel Deck fill plates
- (6) 4-Bolt stainless steel cleats
- Welded stainless steel stanchions
- Color-coordinated thru-Hull fittings
- Stainless steel hand rails & bow rail
- Color scheme blue, green, black & tan
- Stainless steel port lights - (3) Opening, (8) Fixed
- Translucent Deck hatch w/ locks & sky screen cover
- Lofrans Progress I rope / chain windlass w/ foot switches
- Integral swim platform w/ molded access steps to aft Deck & concealed stainless steel swim ladder
-

Exclusions

Owner's personal gear and items.

Salesman's Comments

This is a well maintained, low hour CAT powered Aft Cabin! She is ready for her next family's adventures.

Exclusions

Owner's personal belongings.

Disclaimer

The Company offers the details of this vessel or yacht in good faith but cannot guarantee or warrant the accuracy of this information nor warrant the condition of the vessel. A buyer should instruct his representatives, agents, or his surveyors, to investigate such details as the buyer

desires validated. This vessel or yacht is offered subject to prior sale, price change, or withdrawal without notice.

PHOTOS

Profile 2



Master Stateroom 1



Master Stateroom 2



Master Stateroom 3



Guest Stateroom 2 - Cabinets in Stateroom

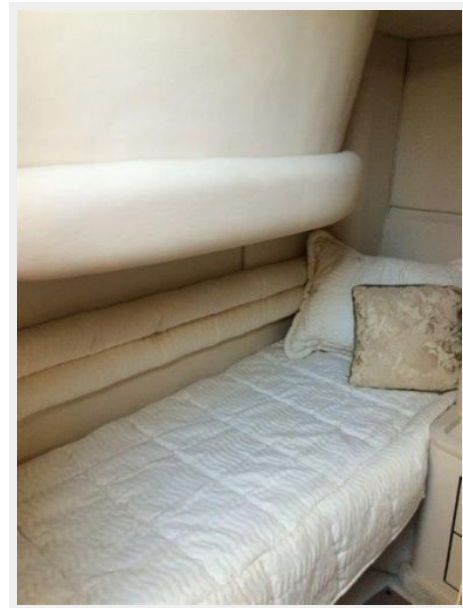
Guest Stateroom 1



Guest Stateroom, Port 1



Guest Stateroom, Port 2



Salon 1



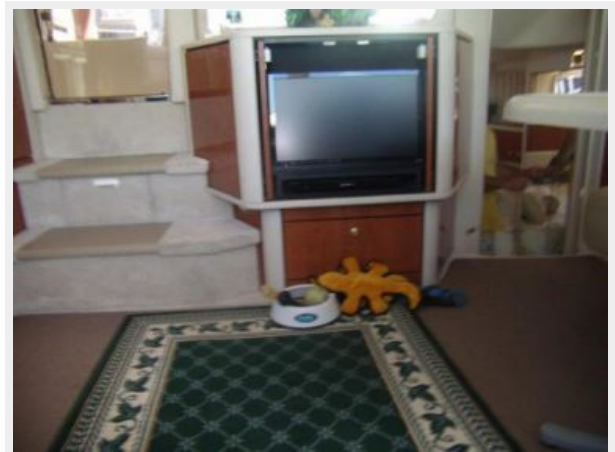
Salon 2



Salon 3



Salon 4 - TV



Master Head 1



Master Head 2 - Shower



Guest Head



Galley 1



Galley 2



Galley 3



Helm / Electronics & Navigation 1



Helm / Electronics & Navigation 2



Deck 1 - Bow



Deck 2 - Underwater Lights



Rear Profile



CONTACTS

Andrey Shestakov, leading yacht broker of the sales department of Shestakov Yacht Sales Inc. Shestakov Yacht Sales Inc., the official representative of the Miami/Fort Lauderdale FL headquarters.

Contact details

Email: andrey@shestakovyachtsales.com

Web: shestakovyachtsales.com/en/

Telephones

USA: +1(954)274-4435

Office hours

Monday – Saturday: **9:00 - 21:00** EDT

Sunday: **closed**

Address



Harbour Towne Marina, 850 NE 3rd St,
STE 213, Dania, FL 33004