

## MID LIFE CRY SEAS — SEA RAY



**Судостроитель:** SEA RAY

**Год постройки:** 1998

**Модель:** Крейсер

**Цена:** ЦЕНА ЯХТЫ ПО ЗАПРОСУ

**Местонахождение:** United States

**Длина общая:** 37' 0" (11.28m)

**Ширина:** 14' 3" (4.34m)

**Макс. осадка:** 3' 1" (0.94m)

Купить MID LIFE CRY SEAS — SEA RAY а также выбрать подходящую вам яхту из нашего каталога яхт вам поможет опытный яхтенный брокер Андрей Шестаков. На сегодняшний день компания Shestakov Yacht Sales Inc. имеет большое количество яхт в собственном списке продаж, а также тесно сотрудничает со всеми крупными яхтенными производителями по всему миру.

Для того чтобы купить яхту MID LIFE CRY SEAS — SEA RAY а также проконсультироваться по любому вопросу связанному с покупкой, продажей, чартером яхт позвоните по телефону **+7(918)465-66-44**.

# ОГЛАВЛЕНИЕ

ОГЛАВЛЕНИЕ	2
ХАРАКТЕРИСТИКИ	4
Обзор	4
Основная информация	4
Размеры	4
Скорость, вместимость и масса	4
Размещение	4
Корпус и палуба	5
Информация о двигателе	5
ПОДРОБНОЕ ОПИСАНИЕ	6
Accommodations	6
Master Stateroom, Aft	6
Guest Stateroom, Forward	6
Guest Stateroom, Port	7
Salon	7
Master Head, Aft	7
Guest Head, Forward	7
Galley	8
Helm / Electronics and Navigation	8
Deck	9
Engine and Mechanical Equipment	9
Electrical System / Equipment	10
Additional Features / Equipment	11
Exclusions	11
Salesman's Comments	11
Исключения	11
Отказ от ответственности	11
ФОТОГРАФИИ	13

Profile 2	13
Master Stateroom 1	13
Master Stateroom 2	13
Master Stateroom 3	13
Guest Stateroom 2 - Cabinets in Stateroom	14
Guest Stateroom 1	14
Guest Stateroom, Port 1	14
Guest Stateroom, Port 2	14
Salon 1	15
Salon 2	15
Salon 3	15
Salon 4 - TV	15
Master Head 1	15
Master Head 2 - Shower	15
Guest Head	16
Galley 1	16
Galley 2	16
Galley 3	16
Helm / Electronics & Navigation 1	16
Helm / Electronics & Navigation 2	16
Deck 2 - Underwater Lights	17
Deck 1 - Bow	17
Rear Profile	17
<b>КОНТАКТЫ</b>	<b>18</b>
Контактная информация	18
Телефоны	18
Время работы	18
Адрес	18

# ХАРАКТЕРИСТИКИ

## Обзор

*This is a well maintained, low hour CAT powered Aft Cabin! She is ready for her next family's adventures.*

## Основная информация

Тип судна: Крейсер	Подкатегория: Cabin Cruiser
Модельный год: 1998	Год постройки: 1998
Страна: United States	Верх: Hardtop

## Размеры

Длина общая: 37' 0" (11.28m)	Ширина: 14' 3" (4.34m)
Макс. осадка: 3' 1" (0.94m)	Длина привального бруса: 38' 2" (11.63m)

## Скорость, вместимость и масса

Водоизмещение: 23800 Pounds	Вместимость воды: 100 Gallons
Вместимость сточного бака: 55 Gallons	Объем топливного бака: 300 Gallons

## Размещение

Всего кают: 3	Всего коек: 6
Спальные места: 6	Всего ком. состава: 2

## Корпус и палуба

---

**Материал корпуса:** Fiberglass

**Материал палубы:** Fiberglass

## Информация о двигателе

---

**Двигатели:** 2

**Производитель:** Caterpillar

**Модель:** 3116TA

**Тип двигателя:** Inboard

**Тип топлива:** Diesel

---

# ПОДРОБНОЕ ОПИСАНИЕ

---

## Accommodations

---

Sleeps five owners and guests in three Staterooms plus slide out sofa bed sleeps one for a total of six berths. One Master Head with shower, one Guest Head with shower. The Sea Ray 370 Aft Cabin has an extremely generous layout with a large interior for it's size. She has a three Stateroom - two Head layout making for very comfortable accommodations. The Salon is open with an L-shaped convertible settee to port and a barrel chair to starboard. Aft is an entertainment center featuring a flat-screen TV. Aft of the Salon is a Master Stateroom featuring an island berth, an abundance of storage including drawer storage and cedar-lined hanging lockers and an en-suite Head. The Head features a vacu-flush Head system, stall shower and vanity. The forward Guest Stateroom features a double island berth, storage drawers and hanging lockers. This comfortable Stateroom is forward of the Galley and isolated from the Master Stateroom for comfortable guest accommodations. The Port Guest Stateroom features a twin bed, hanging locker and a built-in storage compartment.

## Master Stateroom, Aft

---

- Full length mirror
- Built-in night table
- Storage under bed
- Cedar-lined closets
- Vanity w/ corian counter top
- Aft kick-out window drape trim
- Abundant storage (drawers & cabinets)
- Cedar-lined hanging locker w/ mirrored doors
- Queen berth w/ pillows, sheets & coordinated spread

## Guest Stateroom, Forward

---

- Mirror
- Privacy door
- Storage cabinets
- Side shelf storage
- Floor storage compartments
- Drawers & storage under bed
- Cedar-lined hanging lockers w/ mirrored doors
- Full-size pedestal bed w/ pillows, sheets & coordinated spread

---

## Guest Stateroom, Port

---

- Twin bed w/ pillow & sheets
- Built-in storage compartment
- Hanging locker w/ mirrored door

---

## Salon

---

- Barrel chair
- (8) Throw pillows
- 12v Indirect lighting
- Handcrafted wood trim
- Television cord w/ inlet
- 12v Directional lighting
- 120v Outlets throughout
- Mini blinds w/ drape trim
- Acrylic sliding Cabin door
- Gas-assisted bilge hatches
- Deep Pile Marine carpeting
- Dining table / Cocktail table
- Antenna & TV coax to dockside
- 20" Color TV w/ VCR & antenna
- Interior Sunbrella carpet runners
- Granite colored counter tops & tables
- L-shaped sofa w/ storage below w/ electrically operated slide-out bed
- 12v Clarion Stereo system with AM / FM radio, cassette player, amplifier & (8) speakers with Bridge remote control

---

## Master Head, Aft

---

- Privacy door w/ mirror
- Stainless steel handrail
- Medicine cabinet w/ mirror
- Holding tank level indicators
- Corian vanity top w/ sink, storage
- Vacuflush head w/ fiberglass settee lid
- Shower w/ seat, adjustable shower wand & bifold door

---

## Guest Head, Forward

---

- Privacy door

- Pull-out shower wand
- Stainless steel handrail
- Medicine cabinet w/ mirror
- Holding tank level indicators
- Corian vanity top w/ sink & storage
- Vacuflush head w/ fiberglass settee lid

## Galley

---

The Galley is spacious and open and provides a lot of storage and space.

- Bottle storage
- Porcelain sink
- Bottle storage
- Vinyl floor w/ hatch
- 120v / 12v Lighting
- (2) AC Power outlets
- Stainless steel stove handrail
- 120v / 12v AC / DC refrigerator / freezer
- Sharp microwave oven / convection oven
- Flush-mount three-burner, electric cook top
- Black and Decker Spacemaker coffee maker
- Garbage chute w/ concealed removable trash can
- Fiberglass countertop w/ Corian cutting board & Grohe designer faucet
- Galley storage & drawers w/ designated glass & plate storage & cutlery insert

## Helm / Electronics and Navigation

---

- Ritchie Compass
- Concealed dual horns
- Engine synchronizer gauge
- Tachometers w/ hour meters
- Raytheon NAV 398 GPS / Loran
- Dual gear shift & throttle controls
- Raytheon Ray Pilot 650 auto pilot
- Garmin 2010C GPS / Chart Plotter
- Raytheon R11XX Raster scan radar
- Raytheon Ray 210 VHF transceiver
- Clarion stereo system w/ Flybridge remote
- Upgraded Raymarine radar to go w/ the C-120
- Upgraded Raymarine C-120 color chart plotter
- ACR remote controlled spot light w/ Flybridge remote
- Raytheon Ray Chart 601XX electronic charting system



- Custom Sea Ray backlit instrumentation w/ low glare blue night lighting

## Deck

---

- Courtesy lights
- Transom shower
- Bimini enclosure
- Beverage holders
- Windshield cover
- Bimini top & boot
- Windlass w/ anchor
- Canvas storage bag
- Ice maker (aft Deck)
- Dockside water inlet
- 12v Receptacle at Bridge
- Fresh water inlet regulator
- Molded Bridge access steps
- Multi-color under water lights
- (2) Adjustable Captain's chairs
- Stainless steel Bridge safety rails
- Tinted tempered glass windshield
- Extended swim platform w/ shower
- Fiberglass hardtop w/ full enclosure
- Port & starboard acrylic entrance doors
- Sliding Cabin Deck windows & screens
- Forward facing sun lounger & bench seat
- Center Helm station w/ room for electronics
- Fresh water wash down w/ hot & cold Cockpit shower
- Wet bar w/ sink, trash receptacle, grab handles, beverage holder & bottle storage cabinet

## Engine and Mechanical Equipment

---

- Bilge lights
- Zinc Hull plates
- Bonding system
- Engine drip sumps
- Sea water strainers
- Hydraulic trim tabs
- Engine synchronizer
- Emergency start system
- Halon fire control system
- (2) Electric bilge blowers

- (3) Automatic bilge pumps
- Underwater exhaust system
- Turbocharged / Aftercooled
- Remote circuit breaker panel
- Hydraulic steering w/ tilt wheel
- 1 1/2" Stainless steel prop shafts
- Cabin high water alarm & pump
- Inline 6 cylinder 4-Stroke diesel
- 6.6L (402 cu. inch) displacement
- Manganese bronze rudders & struts
- Seacocks on all under water fittings
- (2) High water bilge alarm & pumps
- 30,000 BTU Air conditioning / heating
- Lube oil system (refill) - 25.0L (6.6 gal.)
- Cooling system capacity - 28.0L (7.4 gal)
- Dripless shaft logs w/ extra seal carrier kit
- Water, oil & transmission oil engine alarms
- Racor filters / heat exchanger & fuel shut-off valves
- 105 mm x 127 mm (4.13 in. x 5.0 in.) bore & stroke
- (2) Automatic shower sump pumps & float switches
- Twin 350 hp. Diesel I/B 1999 CAT 3116TA's w/ 750 hrs.
- 55-Gallon Head system holding tank w/ dockside pump-out
- Pressure water system & 11 gallon water heater w/ exchanger
- Aluminum fuel tanks w/ remote fuel filters, anti-siphon valves & electric senders
- Backlit switch panel w/ illuminated weatherproof rocker switches & dimmer control

## Electrical System / Equipment

---

- 5kW Onan generator
- Systems Monitor Panel
- Main DC breaker panel
- Crossover charging system
- Ground fault-protected outlets
- 120v / 40amp / 12v Converter
- (2) 30A 125V Shore power inlet
- (2) Zinc Saver galvanic isolators
- (4) Batteries w/ boxes & switches
- AC / DC Electrical distribution panel
- Heart interface link 10 battery monitor
- Color-coded wiring w/ chafe protection
- 50amp Electronics circuit w/ ground plate
- Dual 30amp / 12v / 60 cycle dockside power w/ 50' cord & adapter

---

## Additional Features / Equipment

---

- Boot stripes
- Bottom paint
- Navigation lights
- Arctic White gel coat
- Gel coated bilge area
- Integral Deck ventilators
- Anchor rope storage w/ hatch
- Insulated engine compartment
- Stainless steel Deck fill plates
- (6) 4-Bolt stainless steel cleats
- Welded stainless steel stanchions
- Color-coordinated thru-Hull fittings
- Stainless steel hand rails & bow rail
- Color scheme blue, green, black & tan
- Stainless steel port lights - (3) Opening, (8) Fixed
- Translucent Deck hatch w/ locks & sky screen cover
- Lofrans Progress I rope / chain windlass w/ foot switches
- Integral swim platform w/ molded access steps to aft Deck & concealed stainless steel swim ladder
- 

---

## Exclusions

---

Owner's personal gear and items.

---

## Salesman's Comments

---

***This is a well maintained, low hour CAT powered Aft Cabin! She is ready for her next family's adventures.***

---

## Исключения

---

При продаже яхты исключаются личные вещи владельца.

---

## Отказ от ответственности

---

Компания предоставляет описание судна или яхты добросовестно, но не может гарантировать точность этой информации, а также не ручается за техническое состояние. Покупатель должен проинструктировать своих агентов или оценщиков

исследовать представленную информацию более подробно, по собственному желанию. Продажа судна или яхты, изменение цены или снятие с продажи будет происходить без предварительного уведомления.

# ФОТОГРАФИИ

**Profile 2**



**Master Stateroom 1**



**Master Stateroom 2**



**Master Stateroom 3**



## Guest Stateroom 2 - Cabinets in Stateroom

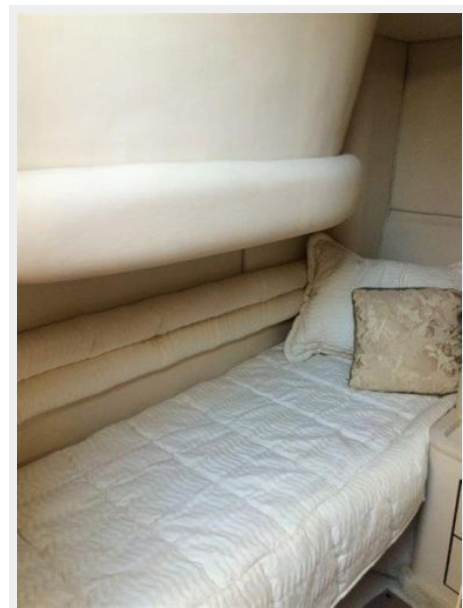
### Guest Stateroom 1



### Guest Stateroom, Port 1



### Guest Stateroom, Port 2



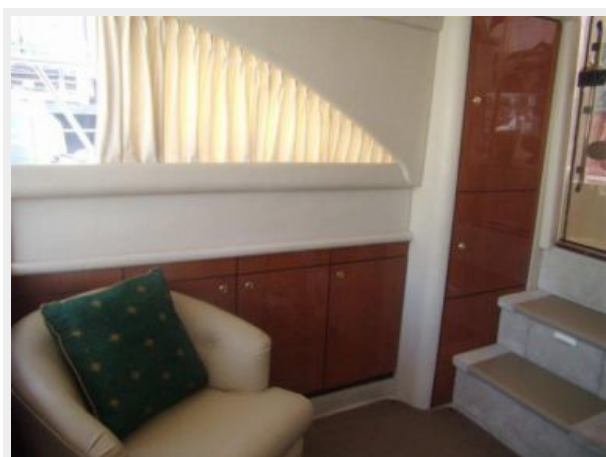
**Salon 1**



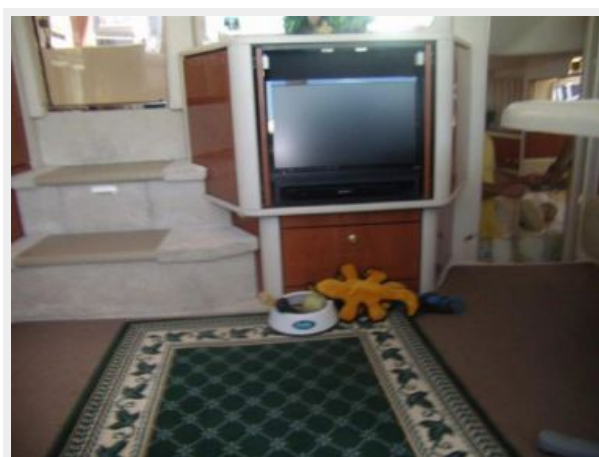
**Salon 2**



**Salon 3**



**Salon 4 - TV**



**Master Head 1**



**Master Head 2 - Shower**





**Guest Head**



**Galley 1**



**Galley 2**



**Galley 3**



**Helm / Electronics & Navigation 1**



**Helm / Electronics & Navigation 2**





**Deck 1 - Bow**



**Deck 2 - Underwater Lights**



**Rear Profile**



# КОНТАКТЫ

---

Андрей Шестаков (Andrey Shestakov) – ведущий яхтенный брокер отдела продаж яхт и судов компании Shestakov Yacht Sales Inc. Официальный представитель Shestakov Yacht Sales Inc. для русскоговорящих клиентов в центральном офисе компании в Майами/Форт Лодердейл/Флорида/США.

## Контактная информация

---

Email: [andrey@shestakovyachtsales.com](mailto:andrey@shestakovyachtsales.com)

Web: [shestakovyachtsales.com](http://shestakovyachtsales.com)

## Телефоны

---

Краснодарский край: **+7(918)465-66-44**

США, Майами, Флорида: **+1(954)274-4435**

## Время работы

---

Понедельник – Суббота: **9:00 - 21:00**  
EDT

Воскресенье: **Закрето**

## Адрес

---



Harbour Towne Marina, 850 NE 3rd St,  
STE 213, Dania, FL 33004