

MON AIMEE — SABRE YACHTS



Builder: SABRE YACHTS

LOA: 42' 0" (12.80m)

Year Built: 2005

Beam: 14' 4" (4.37m)

Model: Trawler

Max Draft: 3' 9" (1.14m)

Price: PRICE ON APPLICATION

Location: United States

Our experienced yacht broker, Andrey Shestakov, will help you choose and buy a yacht that best suits your needs **Mon Aimee — SABRE YACHTS** from our catalogue. Presently, at Shestakov Yacht Sales Inc., we have a wide variety of yachts available on our sale's list. We also work in close contact with all the big yacht manufacturers from all over the world.

If you would like to buy a yacht **Mon Aimee — SABRE YACHTS** or would like help answering any questions concerning purchasing, selling or chartering a yacht, please call **+1(954)274-4435**

TABLE OF CONTENTS

TABLE OF CONTENTS	2
SPECIFICATIONS	4
Overview	4
Basic Information	4
Dimensions	4
Speed, Capacities and Weight	4
Accommodations	4
Hull and Deck Information	5
Engine Information	5
PHOTOS	6
Helm	6
Helm Seating	6
Master Stateroom	6
Master Head	6
Second Stateroom	6
Saloon	6
Galley	7
Engine Room	7
Cockpit Grill	7
Bridge	7
Bridge Seating	7
Cockpit Seating	8
Winlass	8
Oil Change System	8
Flir Night Vision	8
Fire System	8
Saloon Flat Screen	9
Remote Docking System	9

CONTACTS	10
Contact details	10
Telephones	10
Office hours	10
Address	10

SPECIFICATIONS

Overview

Key Features

- 500 HP Yanmar Diesels with only 420 hrs
- Great Highend Garmin Electronics recently added
- Flir Night vision camera, as well as an engineroom and stern camera
- New blue Awlgrip paint in 2014
- Lift kept
- Bow and Stern Thrusters

Basic Information

Category: Trawler

Model Year: 2005

Year Built: 2005

Country: United States

Dimensions

LOA: 42' 0" (12.80m)

Beam: 14' 4" (4.37m)

Max Draft: 3' 9" (1.14m)

MFG Length: 42' 3" (12.88m)

Speed, Capacities and Weight

Displacement: 30000 Pounds

Water Capacity: 160 Gallons

Holding Tank: 60 Gallons

Fuel Capacity: 450 Gallons

Accommodations

Total Cabins: 2

Total Berths: 2

Total Heads: 1

Hull and Deck Information

Hull Material: Fiberglass

Engine Information

Engines: 2

Manufacturer: Yanmar

Model: 6CXM-GTE2

Engine Type: Inboard

Fuel Type: Diesel

PHOTOS

Helm



Helm Seating



Master Stateroom



Master Head



Second Stateroom



Saloon



Galley



Engine Room



Cockpit Grill



Bridge



Bridge Seating



Cockpit Seating



Winlass



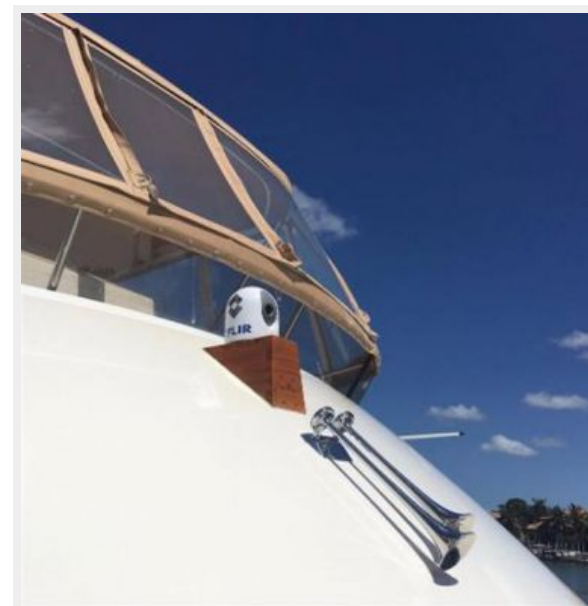
Oil Change System



Fire System



Flir Night Vision



Saloon Flat Screen



Remote Docking System



CONTACTS

Andrey Shestakov, leading yacht broker of the sales department of Shestakov Yacht Sales Inc. Shestakov Yacht Sales Inc., the official representative of the Miami/Fort Lauderdale FL headquarters.

Contact details

Email: **andrey@shestakovyachtsales.com**

Web: shestakovyachtsales.com/en/

Telephones

USA: **+1(954)274-4435**

Office hours

Monday – Saturday: **9:00 - 21:00 EDT**

Sunday: **closed**

Address



Harbour Towne Marina, 850 NE 3rd St,
STE 213, Dania, FL 33004