

## REELIN & DEALIN — VIKING



**Builder:** VIKING

**Year Built:** 2008

**Model:** Sport Fisherman

**Price:** PRICE ON APPLICATION

**Location:** United States

**LOA:** 45' 0" (13.72m)

**Beam:** 16' 4" (4.98m)

**Min Draft:** 4' 6" (1.37m)

Our experienced yacht broker, Andrey Shestakov, will help you choose and buy a yacht that best suits your needs **REELIN & DEALIN — VIKING** from our catalogue. Presently, at Shestakov Yacht Sales Inc., we have a wide variety of yachts available on our sale's list. We also work in close contact with all the big yacht manufacturers from all over the world.

If you would like to buy a yacht **REELIN & DEALIN — VIKING** or would like help answering any questions concerning purchasing, selling or chartering a yacht, please call **+1(954)274-4435**

# TABLE OF CONTENTS

TABLE OF CONTENTS	2
SPECIFICATIONS	5
Basic Information	5
Dimensions	5
Speed, Capacities and Weight	5
Accommodations	5
Hull and Deck Information	5
Engine Information	6
DETAILED INFORMATION	7
Layout	7
Salon	7
Galley	7
Master Stateroom	8
Port Guest Stateroom	8
Head	8
Helm, Electronics and Navigational Equipment	9
Helm Deck	9
Cockpit	10
Fishing Equipment	10
Tuna Tower	11
Deck and Hull	11
Bridge Deck	12
Electrical Equipment	12
Mechanical Equipment and Engine Room	12
Remarks	13
Exclusions	13
Exclusions	14
Disclaimer	14

PHOTOS	15
Cabin	15
Cabin	15
Cabin	15
Cabin	15
Cabin	15
Cabin	16
Cabin	16
Master Stateroom	16
Master Stateroom	16
Guest Stateroom	16
Head	16
Entry sliding door	17
Helm	17
Helm	17
Helm	17
Helm	17
Helm	17
New Garmin	18
New Garmin	18
New ICOM	18
Switch panel compartment, Thruster panel	18
Helm	18
Bridge deck console	18
Below helm	19
Companion panel	19
Cockpit	19
Cockpit	19
Cockpit	19

Cockpit	19
Drink box	20
Engine Room entrance	20
Engine Room	20
Engine Room	20
Engine Room	20
Engine Room	20
Out of the water, new bottom 5/16	21
Boatyard	21
Veems	21
Profile	23
Tower	23
Tower bench seat	23
Tower helm	23
Raft, EPIRB	23
Winlass, Anchor locker	23
Transom livewell	24
Underdeck livewell	24
Cockpit freezer	24
Lazarette	24
Teak toe rail	24
CONTACTS	26
Contact details	26
Telephones	26
Office hours	26
Address	26

---

# SPECIFICATIONS

---

## Basic Information

---

**Category:** Sport Fisherman

**Sub Category:** Express

**Model Year:** 2008

**Year Built:** 2008

**Country:** United States

**Vessel Top:** Full / Tuna Tower

## Dimensions

---

**LOA:** 45' 0" (13.72m)

**Beam:** 16' 4" (4.98m)

**Min Draft:** 4' 6" (1.37m)

## Speed, Capacities and Weight

---

**Displacement:** 49750 Pounds

**Water Capacity:** 150 Gallons

**Holding Tank:** 50 Gallons

**Fuel Capacity:** 848 Gallons

## Accommodations

---

**Total Cabins:** 2

## Hull and Deck Information

---

**Hull Material:** Fiberglass

**Deck Material:** Fiberglass

**Hull Configuration:** Modified V-Hull

**Hull Color:** light blue

**Hull Finish:** Fiberglass

**Hull Designer:** B Wilson

---

## Engine Information

---

**Engines:** 2

**Manufacturer:** MAN

**Model:** V10 1100CRM

**Engine Type:** Inboard

**Fuel Type:** Diesel

---

# DETAILED INFORMATION

---

## Layout

---

Reelin & Dealin has the popular 2 stateroom, 1 head layout. She has many custom and upgraded features throughout including Premier Edition Décor package with brush nickel hardware. She also features Amtico teak & holly sole in the main cabin area. The high gloss wood finish is in excellent condition. Neutral earthtone softgoods and countertops.

## Salon

---

- Viking home theater in salon
- Fusion MS-700AVI stereo system, 2015
- Direct Sat TV receiver
- Sony DVD & VHS player
- Sharp Flat Screen TV
- Ultra leather upgraded sofa with lift-up storage below
- Dimmers on salon overhead lights
- A/C with reverse cycle heat with temperature control
- Cocktail table, teak
- Main electrical service panel
- Stereo speakers multi-directional recessed in and painted to match headliner
- Teak cabinetry with Brushed nickel push buttons
- Storage under steps
- Central Vac

## Galley

---

- Corian galley countertop
- Storage in countertop
- Teak custom backsplash in galley
- 110V outlet under cabinet above galley sink
- Electric range, recessed in countertop(2 burner)
- Exhaust fan, high velocity
- Garbage disposal, 2015
- Microwave/convection oven - Tappan
- Large capacity refrigerator freezer, undercounter style
- Storage cabinets and drawers in upper and lower galley
- Lighting under cabinets
- Water tank level gauge and pump indicator
- Dimmers on overhead lights

- Teak and Holly flooring

---

## Master Stateroom

---

- Sharp flatscreen TV in master stateroom
- SAT TV receiver
- Stereo speakers with adjustable volume
- Island double bed with upgraded mattress (System 3) and lift up top with gas piston and maple-lined underneath
- Master stateroom door catch to keep door open while underway
- Air conditioning with reverse cycle heat with temperature control
- Drawer storage under bed (2) large drawers
- (2) Teak hanging locker, maple-lined
- Overhead halogen lights and decorative indirect rope lighting underneath bed platform
- Overhead reading lights with separate switches
- Carpeting

---

## Port Guest Stateroom

---

- Upper/lower berths and lift-up lower bunk top with maple-lined storage underneath
- Air conditioning with reverse cycle heat
- Maple-lined hanging locker
- Overhead halogen lights
- Stereo speakers recessed in soffit tied into salon stereo with volume control
- Carpeting
- Hatch w/screen

---

## Head

---

- Brushed nickel fixtures in shower and faucet
- Teak face on lower vanity
- Electric head/Vacuflush
- Exhaust fan with vent soffit
- Overhead halogen lights recessed in soffit/ceiling
- Medicine cabinet with mirrored doors and trim
- 120V receptacle
- Shower light
- Stall shower, fiberglass with seating
- Hatch with screen
- Teak and Holly flooring



---

## Helm, Electronics and Navigational Equipment

---

**Electronics package new May 2016** 2 Garmin 8617 Glass Bridge multi-function displays, includes GPS/Chartplotter, Camera/video, as well as displaying radar/weather/CHIRP recording depth sounding

- 2 Garmin GMI 20 color digital data displays
- Garmin GMR 2526 xHD2 radar with 6-foot open array, 25Kw
- Garmin GSD26 BlackBox CHIRP sounder module with new transducer
- Garmin GXM 52, Sirius weather module / XM radio
- Garmin autopilot, GHP Reactor
- 2-Icom M506 VHF radios, new antennas
- 3rd VHF w/command mic in tower
- Garmin 7612 GPS/plotter/sounder (in tower)
- KVH SAT TV antenna dome
- Globalstar 2900 Sat phone
- Fusion Stereo remote panel, new amps & speakers/subwoofer
- Ritchie magnetic compass
- ACR remote spotlight

---

## Helm Deck

---

- Molded hardtop painted Whisper Grey underside
- Molded in lighting beneath hardtop
- (3) STIDD upgraded helm chairs
- ACR spotlight
- Push knob catches for electronic boxes
- Helm A/C
- Bow thruster - control in shifting handles
- Remote wireless bow thruster control
- Electronic single lever controls
- Electronic trolling valves
- (3) wiper controls with washers
- Fusion stereo remote
- Helm & chair covers
- Power assist steering
- Recessed electronics boxes with hinged access
- Helm pod with chrome wheel
- Teak deck on Helm level
- Custom varnished teak cocktail table on command deck
- Uline Refrigerator w/Ice maker

- Tackle center

---

## Cockpit

---

- Stainless steel gas springs upgrade for all cockpit lids and access points
- Awlgrip cockpit lazarette and all bilges and anchor locker
- Custom full cockpit cover
- Cockpit tackle center with cutting board and drawers below
- T in dockside water inlet to fill water tank
- Dual thermostat for cockpit freezer
- Cabinet with storage for gaffs and/or other accessories located under starboard forward gunwale
- Dockside electric connection – 50 amp/220 V
- Cablemaster located in starboard cabinet under forward gunwale
- Engine room access with door and non-slip steps to engine room
- Indirect rope lighting under coaming
- Insulated drink box undermounted in command deck step for direct access from cockpit
- Lazarette hatch with access to steering, trim tabs, drain pumps
- Molded-in tackle center with bait prep station featuring cutting board with custom fitted lid, tackle cabinet with pullout drawers and push release door below and large, deep freezer to port
- Recessed in-deck fishbox, insulated and removable with pump out and drain plate with large holes for easy pumpout and cleaning
- Transom live well
- Floor mounted live bait well
- Release Marine teak Battle Saddle fighting chair, 2014
- (4) Rupp rod holders, flush mounted
- Sea Water washdown with pump in engine room and supply under forward gunwale
- Self-bailing cockpit with large cockpit scuppers
- Stereo speakers powered from salon stereo with volume control
- Storage locker with shelf and push release door molded in at starboard side of salon steps
- Transom swim steps at transom door
- Walk-through transom door with lift gate
- Line from oil change system to cockpit dockside box

---

## Fishing Equipment

---

- Palm Beach Towers full tuna tower, 2013
- Rupp double spreader outriggers, 2013
- Rupp shotgun outrigger, 2013
- Transom live well
- In floor live well

- Release Marine teak Battle Saddle fighting chair, 2014
- Cockpit bait freezer
- Underwater lights, Ocean LED updated May 2016

---

## Tuna Tower

---

- Palm Beach Towers full tuna tower, 2013
- Molded hardtop and standing platforms
- Seat back on tower aft rail for seating
- Molded in navigation lights
- Molded in Lumitec spreader lights
- Power hydraulic wheel steering
- Electronic engine control binnacle
- Main engine start and stop switches
- Trim tab switches
- Horn button
- Molded in lighting over helm deck
- Dual trumpet air horns
- Icom Ram mic
- Garmin 7612 GPS/plotter/sounder, flush mounted
- Racks installed for kite/paddle/surf boards
- Clearing rod holders, aft tower legs
- Aft rail rocket launcher across hardtop

---

## Deck and Hull

---

- Veem propellers, 5-blade Interceptors
- Enclosure 4-sided track to track Sea Crylic with side & back panels
- Underwater lights (4) Ocean LED, replaced May 2016
- Custom blue boot stripe
- Fiberglass hardtop with molded-in quartz lights(4)
- Lewmar windlass
- Handrails- fastened hardtop perimeter rail
- Rubrail painted to match gelcoat
- Oval exhaust outlets
- Fiberglass through hulls and tank vents
- Light Blue hull color
- Teak toe rail (varnish freshed May 2016)
- Windshield covers
- Cockpit fly cover
- Revere life raft, mounted on top of hardtop, 2014
- Water spigot in anchor locker

---

## Bridge Deck

---

- Teak bridge deck sole
- Sunbrella drip dry foam IPO standard for bridge cushions
- Fire system control with automatic and manual discharge and override system located at console
- L-shaped lounge seating with storage beneath
- U-line refrigerator/icemaker in starboard command deck cabinet
- Windshield cover
- Stereo speakers tied into stereo system in salon with volume control in radio box
- Storage cabinet
- (2) Trumpet style air horns
- Windshield, raised wraparound front and sides
- Jump seat to Starboard
- Custom painted helm to reduce glare, Whisper Grey

---

## Electrical Equipment

---

- Onan 17.5kw generator and sound shield
- Batteries, (2) independent 24 V banks mounted in fiberglass storage boxes
- 2 Newmar Phase Three battery chargers, 24v45amp and 24v95amp (1 charger brand new 7/2016)
- Battery distribution panel with battery disconnects
- Battery parallel system for main engines and generator start
- Charles ISO boost voltage stabilizer isolation transformers for more consistent, cleaner voltage

---

## Mechanical Equipment and Engine Room

---

- **Scott Marine Power, a MAN dealer, completed the 1000 hour service 10/15/15**
- Upgrade engines to MAN V-10 1100 CRM (common-rail) with approximately 1150 hours
- MAN emergency backup control panels in lower helm cabinet
- Onan 17.5 KW generator in sound shield box
- Charles ISO boost voltage stabilizer transformer
- Fuel priming pumps 24V
- Awlgrip engine room
- Engine room entrance gauges installed directly into fiberglass
- Start and stop switches, engine room entrance
- Remote mounted starboard engine lube oil filter to inboard side
- Generator gas/water separator for standard generator
- Line from oil change system to cockpit dockside box
- 110V outlet on aft bulkhead at entrance to engine room

- Awlgrip brass thru-hulls and sea strainers in engine room and forward
- Snow white-painted fuel filters and pumps
- Bilge pumps with additional dryout pumps in keel area linked into monitoring system and connected to float switches for automatic and manual operation
- Fresh water supply in engine room for general maintenance and cleaning
- Fuel priming pumps for main engines, manual
- Electric fuel gauges, main & auxiliary
- Fuel transfer system 24V DC pump, remote switch by companion seat panel
- Racor fuel/water separator filters for main engines (with pressure gauges) & generator
- ESI fuel polishing system
- Internal sea strainers for generator, air conditioning and all other sea water pickups
- Oil changing system, gear type pump for main engines, transmissions and generator
- Remote mounted oil filters inboard
- Water heater – dual element, quick recovery
- (2) Y-valve emergency bilge pumps
- Engine room camera with video feed to helm monitor
- Engine room lighting AC/DC
- Parmax saltwater washdown pump
- Dripless shaft logs with spare seals in keepers
- SeaFire manual/automatic fire extinguishing system
- Emergency engine shutdown switches

## Remarks

---

The Viking 45' Express may be the best of any production open sportfisherman, but the **REELIN & DEALIN** uniquely defies her age as she has been updated consecutively by two very detailed owners. She was a custom built by Viking Yacht and is loaded with options throughout, including MAN 1100 Common Rail power. **Scott Marine Power, a S Fla MAN dealer, completed the 1000 hour service 10/15/15.** Since delivery the boat has only approximately 1150 hours of use. Her desired two cabin layout is richly appointed with a custom Premier Edition décor. She features a beautiful Palm Beach Towers tuna tower (new in 2013) as well as a brand new Garmin/Icom package by Offshore Marine Electronics, plus a bow thruster. The teak soled helm deck has two reverse-cycle A/C units & three comfortable Stidd helm seats, plus lounge settees & teak cocktail table. This boat is a true performer in all conditions and you will not be disappointed in any way. A true rare find in today's market.

## Exclusions

---

Owner's personal items are excluded. A detailed list of exclusions will be provided following an accepted purchase offer, upon request. There are some personal belongings aboard the boat (& possibly in some listing photos) that are not included in the sale. Unless specifically mentioned in this spec sheet buyers should assume other items are excluded until discussed and inventoried

during survey.

## **Exclusions**

---

Owner's personal belongings.

## **Disclaimer**

---

The Company offers the details of this vessel or yacht in good faith but cannot guarantee or warrant the accuracy of this information nor warrant the condition of the vessel. A buyer should instruct his representatives, agents, or his surveyors, to investigate such details as the buyer desires validated. This vessel or yacht is offered subject to prior sale, price change, or withdrawal without notice.

# PHOTOS

Cabin



Cabin



Cabin



Cabin



Cabin



**Cabin**



**Cabin**



**Master Stateroom**



**Master Stateroom**



**Guest Stateroom**



**Head**





**Entry sliding door**



**Helm**



**Helm**



**Helm**



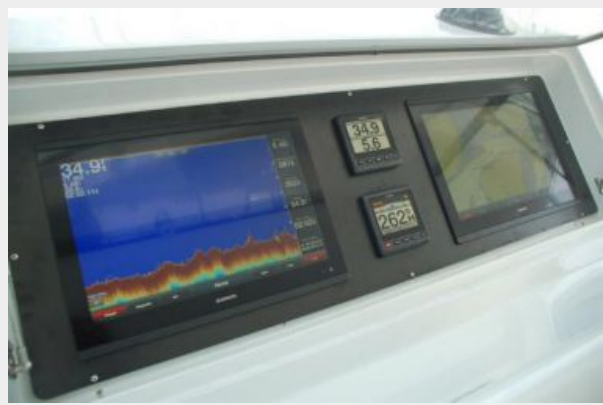
**Helm**



**Helm**



**New Garmin**



**New Garmin**



**New ICOM**



**Switch panel compartment, Thruster panel**



**Helm**



**Bridge deck console**



**Below helm**



**Companion panel**



**Cockpit**



**Cockpit**



**Cockpit**



**Cockpit**



**Drink box**



**Engine Room entrance**



**Engine Room**



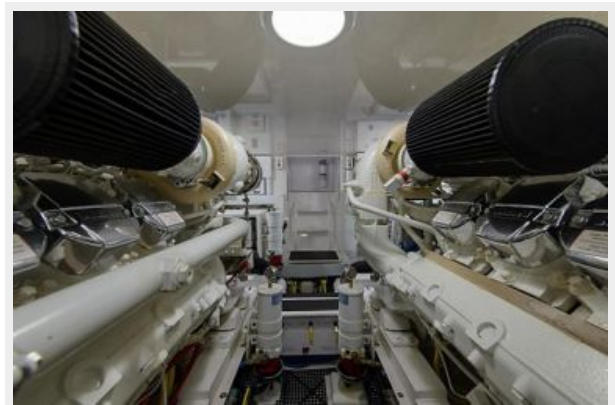
**Engine Room**



**Engine Room**



**Engine Room**



Out of the water, new bottom 5/16



Boatyard



Veems





**Profile**



**Tower**



**Tower bench seat**



**Tower helm**



**Raft, EPIRB**



**Winlass, Anchor locker**



**Transom livewell**



**Underdeck livewell**



**Cockpit freezer**



**Lazzaretto**



**Teak toe rail**







# CONTACTS

---

Andrey Shestakov, leading yacht broker of the sales department of Shestakov Yacht Sales Inc. Shestakov Yacht Sales Inc., the official representative of the Miami/Fort Lauderdale FL headquarters.

## Contact details

---

Email: [andrey@shestakovyachtsales.com](mailto:andrey@shestakovyachtsales.com)

Web: [shestakovyachtsales.com/en/](http://shestakovyachtsales.com/en/)

## Telephones

---

USA: +1(954)274-4435

## Office hours

---

Monday – Saturday: **9:00 - 21:00** EDT

Sunday: **closed**

## Address

---



Harbour Towne Marina, 850 NE 3rd St,  
STE 213, Dania, FL 33004