

MISS GLORIA — HARGRAVE



Builder: HARGRAVE

Year Built: 2008

Model: Motor Yacht

Price: PRICE ON APPLICATION

Location: United States

LOA: 96' 0" (29.26m)

Beam: 21' 0" (6.40m)

Max Draft: 5' 9" (1.75m)

Cruise Speed: 16 Kts. (18 MPH)

Max Speed: 19 Kts. (22 MPH)

Our experienced yacht broker, Andrey Shestakov, will help you choose and buy a yacht that best suits your needs **Miss Gloria — HARGRAVE** from our catalogue. Presently, at Shestakov Yacht Sales Inc., we have a wide variety of yachts available on our sale's list. We also work in close contact with all the big yacht manufacturers from all over the world.

If you would like to buy a yacht **Miss Gloria — HARGRAVE** or would like help answering any questions concerning purchasing, selling or chartering a yacht, please call **+1(954)274-4435**

TABLE OF CONTENTS

TABLE OF CONTENTS	2
SPECIFICATIONS	4
Overview	4
Basic Information	4
Dimensions	4
Speed, Capacities and Weight	4
Accommodations	5
Hull and Deck Information	5
Engine Information	5
DETAILED INFORMATION	6
Interior	6
Salon & Foyer	6
Dining Area	6
Galley	6
Master Stateroom	7
VIP Stateroom	7
Guest Cabins - Port & Starboard	8
Crew Quarters	8
Skylounge	8
Deck Equipment	8
Electronics	10
Engine & Mechanical	10
Hull	11
Electrical Equipment	12
Exclusions	13
Exclusions	13
Disclaimer	13
PHOTOS	14

CONTACTS	22
Contact details	22
Telephones	22
Office hours	22
Address	22

SPECIFICATIONS

Overview

This vessel features a one-of-a-kind option - a 2 person Elevator which services all 3 levels! MOTIVATED SELLER - BRING ALL OFFERS AND TRADES!

Gorgeous Sapele wood interior, all interior soft goods replaced 2013. Convenient Day Head. KVH TV, hydraulic bow and stern thrusters, 1400 gpd water maker. Naiad Stabilizers, underwater lights, and much more!

Basic Information

Category: Motor Yacht

Model Year: 2008

Year Built: 2008

Country: United States

Fly Bridge: Yes

Dimensions

LOA: 96' 0" (29.26m)

Beam: 21' 0" (6.40m)

Max Draft: 5' 9" (1.75m)

Speed, Capacities and Weight

Cruise Speed: 16 Kts. (18 MPH)

Max Speed: 19 Kts. (22 MPH)

Water Capacity: 600 Gallons

Holding Tank: 100 Gallons

Fuel Capacity: 3000 Gallons

Accommodations

Total Cabins: 4

Total Heads: 6

Crew Cabin: 2

Crew Sleeps: 6

Crew Heads: 2

Hull and Deck Information

Hull Material: Fiberglass

Engine Information

Engines: 2

Manufacturer: Caterpillar

Model: 3412 E

Engine Type: Inboard

Fuel Type: Diesel

DETAILED INFORMATION

Interior

- Interior soft goods replaced 2013
- Italian door handle package (gold)
- Push/Pull German latches (gold)
- Removable white vinyl headliner panel system
- Recessed Tray ceiling in salon
- Lights in closet on micro switches
- Canaloupe 24v LED ceiling lights (gold)
- Roman Shades in each stateroom, main salon & galley
- Quicklift Custom Elevator to all 3 decks w/one folding chair (serviced 8/2016)
- Sapele wood interior
- Headliner w/Foam throughout vessel
- Sapele wood in Main Deck & Lower Cabins
- (12) Additional Cantalupi Viareggio Interior Lights
- Custom upholstery throughout
- Vimar light switches w/ 9 dimmers
- Personal interior upgrade & additions over standard

Salon & Foyer

- Granite Credenza & Bar Top in Salon
- Glass Cocktail Table in Salon
- Granite Bar Floor in Salon
- (2) Wooden Columns in Salon
- (2) 6" Columns at center console & buffet in Salon
- Marble Console Top w/columns in Foyer
- GE White Washer/Dryer in Foyer
- U-Line Black with Sapele Panel Ice Maker in Salon
- U-Line Wine Cooler S/S Glass Front w/Retractable Doors

Dining Area

- Glass Top for Dining Room Table
- (8) Dining Chairs

Galley

- Granite counter top in galley
- Double S/S Sink in Galley
- Slider on Table in Galley
- Pocket Sliding Doors in Galley
- Custom Pantry in Galley
- Upgrade to GE Profile S/S Fridge above standard
- (2) Sub-Zero with Sapele Panel Fridge Drawers in Galley
- (2) Sub-Zero with Sapele Panel Fridge Freezer Drawers in Galley
- Upgrade to GE Profile S/S Cooktop with S/S Oven in Galley above standard
- GE Profile S/S Telescopic Hood in Galley
- GE Spacemaker S/S Microwave in Galley
- Bosch Dishwasher in Galley
- ISE Instant Hot Water Dispenser Chrome with S/S Hot Water Tank in Galley
- GE S/S Trash Compactor in Galley
- GE Black Disposal in Galley

Master Stateroom

- Full Walk-in Shower
- Additional layer of Insulation on Master Stateroom bulkhead
- Sliding Shoji Screens
- Lights on vanity lift-up Mirrored Top
- Mirror on back of double doors on the closets
- Full extension slide for drawers
- Rain Head shower head
- (2) Shelf in Shower for shampoos and bottles x 2
- Marble floor in head
- Grab Bars in Master Bath
- Custom Shower w/marble walls & glass doors
- (2) His/Hers Headhunter toilets remote control
- Safe

VIP Stateroom

- Walk-around Bed Majilite
- Bombay-Rattan with 1/8" Foam wall upholstery
- Full extension slide for drawers
- Rain Head shower head
- (2) Shelves in Shower
- Marble floor in head

Guest Cabins - Port & Starboard

- Twin beds in starboard & guest cabins
- Pullman berth in Starboard guest cabin
- Marble floor in head

Crew Quarters

Aft Crew Cabin:

- Single berth
- Pocket Door in Aft Crew Cabin
- Lift Up Steps to access storage under stairway in Crew Cabin
- Hanging Locker in Crew Quarters

Forward Crew Area:

- Kitchenette with L-shaped seating
- GE White Washer/Dryer
- GE S/S Ice Maker/Fridge
- Bunk Cabin
- Double Captain's Cabin
- Shared head with shower

Skylounge

- Dayhead
- Built in corner couch w/storage
- (1) Mirror on the elevator door

Deck Equipment

- Fiberglass swim platform w/ ladder
- All handrails, stanchions and fittings made of stainless steel 316 alloy
- 1 1/2" stanchions
- Stainless steel cleats (8)
- Stainless Steel frame hatch on fore deck w/ grey lexan cover
- Dual chrome plated horn
- Built in hand held shower on swim platform
- Easy access to all helm dashboard controls and gauges
- Remote windlass operation from Pilothouse and Flybridge
- Large Storage areas forward deck

- Fiberglass main and lower decks
- Stainless steel aft deck door frame
- Black Textile front window covers
- Flybridge Vinyl seat covers
- Lexan hatch from aft deck to Fly Bridge deck
- (3) Freeman Hatches
- City water inlets (2)
- TV / telephone inlet (2)
- Fresh water washdown (3) three locations - Bow / aft deck / flybridge
- Sea Chest
- (3) Windshield wipers with blades
- Maxwell Nilson Bow Windlass 4000 w/250 lb Stainless Steel 316 plow Anchor & 300' Hi-Tensil Chain
- (2) Electric Chef stainless grills one at aft deck and one on boat deck
- Watertight Door w/Hargrave Backlit Name Plate at Transom
- Hard top extension aft of Skylounge with (2) SS Supports
- Flybridge bar
- SS 6" Base for Table in Boat Deck
- (2) Handrails to slope downward from Boat Deck
- S/S Ladder from Boat Deck to Roof
- Teak Table Top in Boat Deck
- (6) Teak Chairs on Boat Deck
- Non-skid decks (forward, upper aft, transom)
- 10" Wide Non-Skid Brow above windshield
- Aft deck bar cabinet w/GRP top
- Teak aft deck chairs x 5
- Aft deck Teak table with fixed pedestal and sliding hardware w/ hi-lo mechanism
- Aft deck bench seating
- Automatic Electric Sliding Door on Aft Deck
- Additional Divider at Chain Locker
- SS Backing Plate for anchor locker hatches, bow locker hatches and inspection hatch at swim platform
- Custom Storage Locker for Boarding Ladder
- (5) U shaped hand rails on swim platform
- (2) U shaped stanchions at the corners of the Swim Platform
- Pop-Up Cleat in center of Swim Platform
- (2) L shaped corner cleats at Swim Platform
- LED Lights under fins of radar arch and on aft deck
- Outside Chrome Lights on outer deck overhang x 2 (one on each side)
- Roller Hawsers on Aft Deck (2)
- (6) Underwater lights
- Hargrave Style Mast
- Freezer Box with 120 volt Power Outlet (new 2015)
- U-Line White Fridge at Aft Deck

- U-Line White Ice Maker at Boat Deck
- (2) 8 person Life Rafts
- Safety Package-Life Jackets/Fenders/Fire Extinguishers/Dock Lines/Flares/Dual plug phone/TV cord
- Quick Lift 2000 lb. Low profile davit w/hydraulic rotation (serviced 8/2016)
- Marquipt Sea Stairs

Electronics

- Simrad AP25 autopilot
- Danforth 6" compass
- (4) Raymarine depth sounders
- Furuno 48 mile radar
- (4) ICOM Pro 402D VHF
- (3) ICOM 72 VHF
- Rudder angle indicator
- Wind/speed indicator
- Nobeltec GPS
- Garmin 545 GPS
- Nobeltec speed & distance logs
- Cat instruments at helm (Tach/Oil Pressure/Engine Temp/TransPressure/Hrs)
- ACR spotlights
- (4) monitors for electronics
- Factory installation of all Audio Visual and Navigational Equipment

Electronics (Nav and AV):

- Kahlenberg air horns KOA chrome 24v
- Televisions throughout
- Direct TV Satellite
- KVH Satellite for Wifi and phones
- Wave Wifi system

Engine & Mechanical

- 1 7/8 Deckfills for fuel and water
- 600 Gallon Stainless Steel Water Tank
- Single layer of sound and heat insulation in Engine room bulkhead fwd, aft & ceiling
- (2) Raycor 1000 FG fuel filter/water separator for each engine
- (2) Racor 75/1000 MA fuel filter/ water separator for main engines
- Hydraulic Bow Thruster HPS-36hp
- Stern Thruster - 36 hp
- Hydraulic steering by Hynautic, adaptable to auto-pilot

- Engine Alarm System for low pressure & high temperature supplied by Cat
- Four (4) Jabsco Engine compartment blowers
- 24v lights and 110v power receptacles in Engine room (4 each)
- Custom underwater engine exhaust w/idle by-pass
- High volume 24v Groco Water Pressure Pump (30lb)
- 100 Gallon Holding Tank w/ indicator
- Fresh water filling faucet in Engine room
- Lovett Sump Pumps (4)
- Y-Valve for dockside pump out
- White perforated insulation panels in Engine Room
- Upgrade AC System from Standard to Cruise Air Chilled Water System (4) 3 Ton Compressors
- Install muffler on the exhaust By-Pass
- Double insulated engine room
- Watertight bulkheads in engine room
- Naiad stabilizer system Model 302 with 9 sq. ft. fin w/multisea 2000
- To Fit FRP Pipes for Stern Thruster at transom
- Engine room Seafire
- Fire & Smoke Detectors, total 10 throughout boat
- FM 200 fire suppression system
- Water Heaters x 2 to 40 Gal.
- Sump Tanks with Covers x 5
- Headhunter MSD system with jet pump waste water treatment
- (1) Glendinning CM8 100Amp CABLEMASTER w/ 125' Cord Port side (new 8/2016)
- Glendinning remote control (new 8/2016)
- Tide Seal Dripless Rudders
- Tide Seal dripless shaft logs
- In-Line Recirculating "Hot Water" pump
- Jabsco Emergency Bilge Pump w/3 pick-ups
- Safety Handrails at sides of Main Engines
- (1) Fuel Transfer pumps, Orberdorfer PSRO 80
- (1) Additional Oberdorfer PSRO Fuel Transfer pump
- Reverso GP706-24 Oil Transfer pump for engines and generators
- Water Drop Exhaust to 2 generators
- 4 engine room blowers
- Engine Room entry hatch w/ Ladder on Aft Deck
- Sea Recovery Inc. 1400 GPD water maker

Hull

- V-Shaped Keel w/ Longitudinal stringers
- Fiberglass hand laid hull & stringers vacuum bagged w/foam core reinforcement
- Stringers bonded to hull encapsulated in several layers of glass cloth & resin

- Deck & superstructure w/ foam cored reinforcement under fiberglass
- FRP Bulkheads
- Interior structural components bonded to hull including bulkheads and frames
- FRP Main Deck and floors
- Non-Skid on main exterior decks (except teak aft deck)
- Stainless Steel exterior Portholes
- 3 1/2" stainless steel shafts equivalent to Aquamet 22
- Zincs on shafts, rudders and transom as needed
- 4 Blade Faster bronze propellers with 3 1/2" spurs
- Main bronze struts
- Emergency tiller
- Stainless steel rudders
- Fiberglass engine beds, bonded to hull w/ load distributed on steel channels
- 2 Coats International Gel shield
- 100 amp galvanic isolator
- Oval 24" x 12" Port Holes x 6
- Hand rails to 1 1/2" SS hoop in main and on boat deck

Electrical Equipment

- Leviton High quality sockets and switches in all rooms
- 220v, 110v and 60Hz Electrical System
- Color coded wiring throughout
- Custom -built Helm Console when electronics
- (8) 200 amp/hr batteries for engine & ship power
- (3) Professional Mariner battery chargers
- Separate 120 amp/hr battery for generator
- All batteries in FRP battery boxes
- All batteries replaced 7/2015
- Main electrical panel w/ separate AC Power control and circuit breaker panel
- 110 volt duplex receptacles located throughout vessel, including engine room
- 100 amp shore power cable - 75' cord
- (2) shore power outlets - 1 forward and 1 aft
- Indirect rope lighting under valances in salon staterooms, sky lounge and galley
- Boat panel indicator
- Security breaker for AC power
- (2) 40 kW 60Hz Westerbeke 4.OBEDA Single Phase with soundshield
- Stbd Side Forward Shore Power 100 Amp Connection w/75' of 100 amp cord
- Wiring for TV under bunk in Crew and TV at aft deck
- (3) 120 AMP Sentry / Dolphin AC/DC light transformer 110 / 24V
- Sentry battery chargers: 1-80Amp (24V) / 1-30Amp (24V) / 1-30Amp (12V)
- (2) Newmar 50 Amp DC 24V to DC 12V converter
- Underwater lights in stern

Exclusions

Personal items, tools, artwork. Full list to be supplied upon offer.

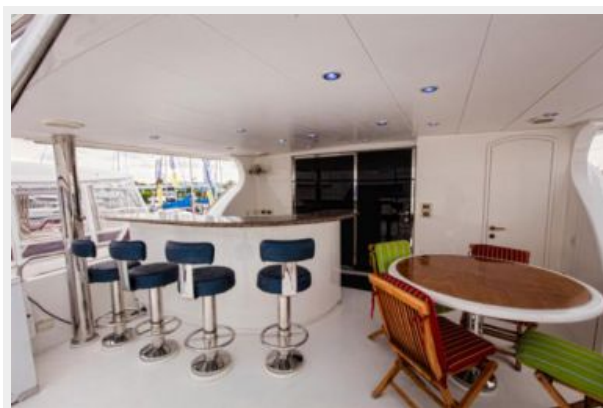
Exclusions

Owner's personal belongings.

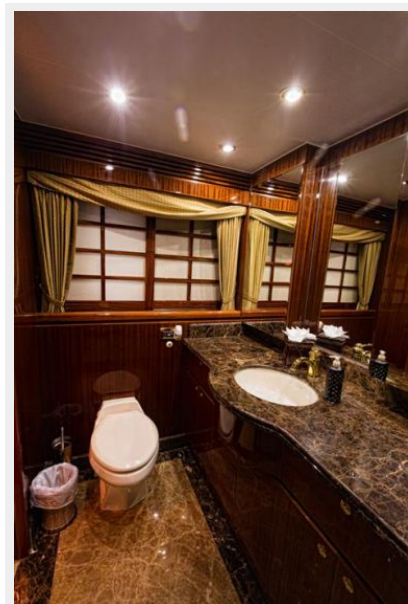
Disclaimer

The Company offers the details of this vessel or yacht in good faith but cannot guarantee or warrant the accuracy of this information nor warrant the condition of the vessel. A buyer should instruct his representatives, agents, or his surveyors, to investigate such details as the buyer desires validated. This vessel or yacht is offered subject to prior sale, price change, or withdrawal without notice.

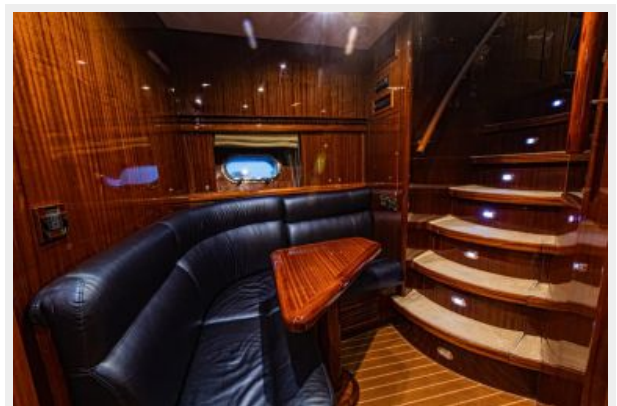
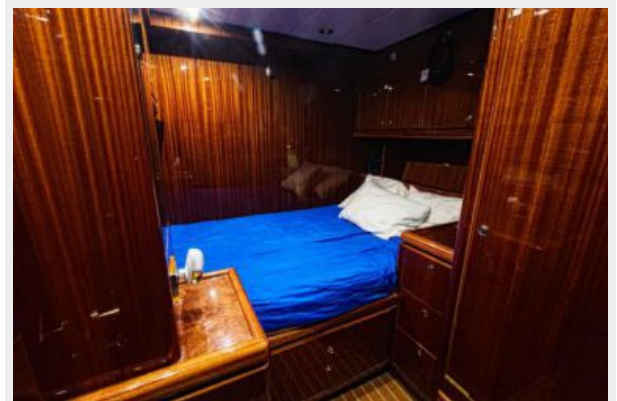
PHOTOS



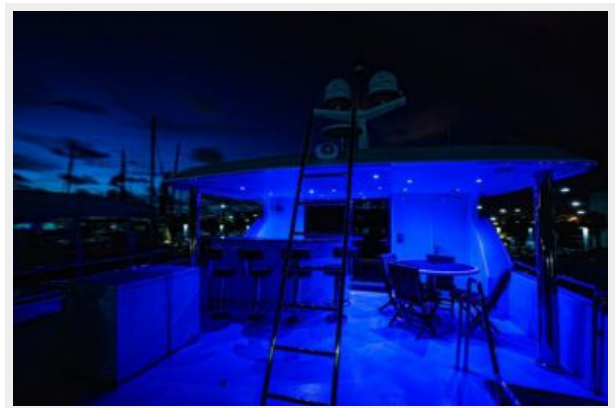














CONTACTS

Andrey Shestakov, leading yacht broker of the sales department of Shestakov Yacht Sales Inc. Shestakov Yacht Sales Inc., the official representative of the Miami/Fort Lauderdale FL headquarters.

Contact details

Email: **andrey@shestakovyachtsales.com**

Web: shestakovyachtsales.com/en/

Telephones

USA: **+1(954)274-4435**

Office hours

Monday – Saturday: **9:00 - 21:00 EDT**

Sunday: **closed**

Address



Harbour Towne Marina, 850 NE 3rd St,
STE 213, Dania, FL 33004