

GIGI — HATTERAS



Builder: HATTERAS

Year Built: 2008

Model: Motor Yacht

Price: PRICE ON APPLICATION

Location: United States

LOA: 72' 0" (21.95m)

Beam: 20' 2" (6.15m)

Max Draft: 5' 4" (1.63m)

Cruise Speed: 23 Kts. (26 MPH)

Our experienced yacht broker, Andrey Shestakov, will help you choose and buy a yacht that best suits your needs **GIGI — HATTERAS** from our catalogue. Presently, at Shestakov Yacht Sales Inc., we have a wide variety of yachts available on our sale's list. We also work in close contact with all the big yacht manufacturers from all over the world.

If you would like to buy a yacht **GIGI — HATTERAS** or would like help answering any questions concerning purchasing, selling or chartering a yacht, please call **+1(954)274-4435**

TABLE OF CONTENTS

| | |
|------------------------------------|----|
| TABLE OF CONTENTS | 2 |
| SPECIFICATIONS | 4 |
| Overview | 4 |
| Basic Information | 7 |
| Dimensions | 7 |
| Speed, Capacities and Weight | 8 |
| Accommodations | 8 |
| Hull and Deck Information | 8 |
| Engine Information | 8 |
| DETAILED INFORMATION | 9 |
| Accommodations | 9 |
| Fly Bridge | 9 |
| Galley/Laundry | 10 |
| Hull/Deck | 10 |
| Electrical System | 11 |
| Electronics & Navigation Equipment | 11 |
| Safety and Fire Protection | 12 |
| Tender/Toys | 12 |
| Exclusions | 12 |
| Disclaimer | 12 |
| PHOTOS | 14 |
| Profile | 14 |
| Bridge | 14 |
| Engine Room | 14 |
| Galley | 14 |
| Profile | 14 |
| Transom | 14 |
| Helm | 15 |

| | |
|------------------|----|
| Master Stateroom | 15 |
| Salon | 15 |
| Sea Doo | 15 |
| Stateroom | 15 |
| Stateroom | 15 |
| VIP Stateroom | 16 |
| CONTACTS | 21 |
| Contact details | 21 |
| Telephones | 21 |
| Office hours | 21 |
| Address | 21 |

SPECIFICATIONS

Overview

2008 Hatteras 72 MOTOR YACHT ONLY 236 HOURS on 2014 CAT 32 1700hp engines
Accommodations This 72' Hatteras features 4 staterooms, 3 cabin heads, a day head, plus crew accommodations aft. (8) televisions total. The wood treatments throughout the yacht are satin-finish African Mahogany.

Upon entering the vessel from the boarding gate(s) via the forward deck, you enter the main salon and are immediately greeted by dark wood, rich fabrics and quality stonework. To port is a granite-topped bar with a 50" flat screen TV (mounted above). Proceeding forward from the stainless steel sliding salon doors, one immediately notices the raised-panel cabinetry on the forward bulkhead, both port and starboard. Forward of the wet bar to port is a varnished dining table which seats six. Two glass-faced cabinets occupy the port forward bulkhead and house the china and formal flatware. Forward also to port and starboard are high gloss wood columns and high gloss crown molding. Raised panel cabinets below house other wares. Both countertops on the cabinetry are covered with a light colored granite. Below deck the master stateroom is full beam and features an oversized king berth, walk-in closet and a his/hers head connected by a large glass stall shower. The area is finished in an assortment of marble and granite stonework with top of the line hardware. The stateroom has 6 oval-shaped portholes allowing ample light to enter the space. The three additional staterooms are also finished in satin African Mahogany and the heads have stonework consistent with the rest of the vessel. All staterooms have flat screen HDTV's and SMX AC Controls as well. Carpet runners throughout.

- Satin-finished African Mahogany Wood treatments throughout
- Designer low-profile carpeting throughout
- Custom wood detail in salon headliner
- Venetian-style Hunter-Douglas blinds in salon
- Finished Mahogany Valances
- Granite topped bar with chairs
- 50" flat screen HDTV
- 20" flat screen HDTV (on aft deck in locking drop-down cabinet in overhang)
- Full beam Master with ensuite heads
- Custom fabrics and soft goods throughout vessel
- Staterooms are all appointed with satin-finished African Mahogany
- Port & starboard guest cabins have factory installed port lights

Fly Bridge The 72' Hatteras M/Y features a generous fly bridge with an integrated hardtop and a 3-panel glass windshield. There is a removable EZ2CY and traditional Strata-Glass 3-sided enclosure with aft curtain for foul weather. The space is air conditioned for comfortable cruising during the summer months, as well. Aft of the enclosure is the boat deck complete with 1500lb davit and chocks. To port and starboard on the tender decks are wind stations outboard. Also to starboard on this deck are dual stainless steel Miele BBQ grills in a hideaway molded cabinet. Proceeding forward from the boat deck, the covered fly bridge has full carpeting, which is also removable. To starboard, there is a large upholstered wrap around seating area with two small pedestal tables, both topped in dark wood. To port, there is a smaller seating area which is just aft of the flybridge wetbar. The bar top is dark wood and the area is complete with 3 built-in upholstered pedestal bar stools, a refrigerator, sink, icemaker and storage.

• MarQuipt TL2-1500 davit • U-Line refrigerator • (2) Gaggenau 120-volt grills • Overhead lights in hardtop • 3-panel glass windshield w/3 wipers • 3-sided EZ2CY and traditional Strata-Glass enclosure • Port & stbd wind/backup engine controls • (4) Air conditioning zones & reverse cycle heating w/digital CruiseAir SMX controls • Stereo speakers

Galley/Laundry Forward of the main salon is the country galley. All wood treatments are satin finished African Mahogany. Two steps lead up from the salon to the galley. Upon entering the appliances and island counter top are to port and the side by side Sub-Zero refrigerator is to starboard. Aft of the fridge just before entering the galley is the day head. There is a single window in the day head as well. The country galley seating is all the way forward below the forward windows. There is a wrap around leather upholstered dinette with seating for six. The table is an earth tone granite consistent with the galley countertop. The flooring in the galley is Amtico in teak and holly style.

• KitchenAid 4-burner ceramic cooktop • Whirlpool convection oven w/broiler • Whirlpool dishwasher • Whirlpool trash compactor • Badger in sink trash disposal • Sharp carousel microwave/convection oven • Granite countertops throughout • Amtico "teak & holly" soles • Leather upholstered dinette w/seating for six • Island counter to port • (2) wing doors (fwd port & stbd) to side decks from galley • Whirlpool stacked washer/dryer in stateroom companionway • Central vacuum system w/multiple outlets for hook up

Hull/Deck The hull above the waterline was finished in spray urethane paint (Alexseal Paint) with highlight striping. The deck and cabin superstructure are of fiberglass construction, also sprayed with Alexseal Paint and sprayed nonskid on the decks. The 72' MY also features full walkaround decks from the aft deck area all the way forward. There are several polished stainless steel "hoop-style" rails around the entire walkaround. The aft deck area is teak soled and there is a molded stairwell to the fly bridge in the port corner of the aft deck. The steps are also finished in teak sole. There is also a forward facing built in seating area with a varnished wood pedestal table on the aft deck for outdoor dining. The seating area is upholstered and has a full cover for protection. On the starboard corner of the aft deck overhang is drop down LCD HDTV in a locking cabinet. There are also stereospeakers and overhead lights on the overhang.

• 20" Sharp Aquos LCD HDTV in locking drop down cabinet overhead of aft deck • Teak soles on aft deck • Full non-skid walkaround decks • Stainless steel deck hardware (cleats, chocks, hausers, ect.) • Maxwell 4000 hydraulic anchor windlass w/chain gypsy, capstan drum, main engine PTO, and dual foot (up/down controls mounted on the foredeck • Audio system control, LCD keypad and (2) Pioneer Marine speakers on aft deck • Boarding gates (P&S) side decks • MarQuipt Tide Ride boarding ladder in hidden compartment in side at the superstructure • 100lb non magnetic grade stainless steel plow anchor w/approx 250' of galvanized 3/8" G4 high tensile chain • Aft swim platform w/boarding ladder (hideway) • (3) 10" diameter overhead compartments, port & starboard sides to store fenders • (4) underwater lights • Resin-infused solid fiberglass hull bottom • Resin-infused fiberglass stringers (steel laminated in stringers @ engine mount areas) • Engine room bulkheads and decks are of resin-infused composite construction using PVC foam core w/layers of fiberglass laminate on each side

Electrical System The primary electrical system aboard is 24 and 12 volt, based on multiple batteries feeding via main battery selector switches to distribution via multiple 24 & 12 volt circuit breaker panels w/a 24 volt to 12 volt converter. The 24 & 12 volt system is supplemented by a 240/120 volt shorepower system via (2) Glendinning 100 amp power cords forward and (2) Glendinning 100 amp power cords aft.

- 12-volt electronics circuit breaker panel mounted beneath flybridge console w/AC-DC converter
- (4) Deka 8D conventional lead-acid batteries wired in series parallel for two 24 volt battery banks (in covered fiberglass boxes in ER) • GFCI protected outlets throughout vessel • Automatic battery paralleling system w/switch at helm station • AC distribution panels w/magnetic circuit breakers • AC switching panel w/source selector switches, digital volt meter, ammeter, frequency meter, generator start/stop controls, voltage boost tap switch and interlock selector • (2) Jefferson Electric isolation transformers • MasterVolt 24 volt 75 amp three step marine grade battery charger w/solid state isolator • (2) Onan 27.5 kW generators • Engine driven alternators • Navigation lights • Ground fault protection on AC receptacles and lighting circuits

Electronics & Navigation Equipment The upper helm station on the 72' Hatteras is generously outfitted with electronics. The area has ample visibility on both sides as well as down to the bow and foredeck through the large windshield. For easy maneuvering around the dock, there are (3) sets of back-up/wing controls: (2) on the boat deck (P&S) and (1) below on the aft deck. All are equipped with throttles, gears and bow thruster joystick.

- Garmin • (2) RayMarine G-Series color GPS plotters with GPM-400 processors • (2) Icom IC-M604 VHF radios at helm • KVH M7 TracVision satellite reception system providing depth 72-mile radar w/digital split range radout and a 6' open array scanner • ELBEX video monitoring system w/flybridge processor, remote control and both aft deck and ER compartment telescoping cameras • CAT digital engine displays • (4) separate DSS SAT receivers • ACR spotlight pointpad • Bow & stern thruster control • TRAC digital display for stabilizers • Newmar loud-hailers (fwd & aft) • (2) Furuno RD-30 multi-function digital displays w/depth, water temp, air pressure, air tem, humidity, wind speed, wind direction, vessel speed, ect. • RITCHIE Powerdamp dashmount compass • Simrad AP-25 24volt hydraulic autopilot system • Wi-Fi

- (2) Onan 27.5 KW 120/240 volt generators • Hartzell 240-volt ER blowers • ZF Gears (model 2350) reduction gears 4.00:1 ratio • Packless shaft glands (freshwater cooled) • Dual RACOR primary fuel filters on each main engine • Fuel transfer system (day tank and two secondary tanks) • Seachest w/sea strainers (sea water intake) • Back up CAT digital/analog engine data displays mounted above each engine in ER • Polyethelene water lines • 24-volt DC bilge and sump pumps, two at 2000 gph and six at 3700 gph with heavy duty float switches and guards • Bronze/chrome ball valves through bolted in solid fiberglass on all underwater through hull fittings w/electrical bonding throughout • Fiberglass water tanks • Electric fuel priming pumps 24 volt DC, engines • AC & DC distribution panels • Gray water tanks w/230-volt AC sewage pump - plumbed for dockside - 185 gallons • Black water - 300 gallons • Reverse Osmosis watermaker (upgrade) • Bennett Trim Tabs w/ controls at helm (hydraulic) • ABT Trac Hydraulic STabilizers w/digital display at helm station • Hydraulic dual prop bow thruster w/control at helm (also controls at wing stations and aft deck station) • (3) Fuel tanks AFT (740 USG) MID (1020 USG)

FWD (460 USG) Fuel tanks are molded fiberglass • Cablemaster retracting system for (2) 100 amp shore cords • Shore power hook ups forward and aft on vessel • Fresh water coil hose • 120/240 volt ER lighting • Battery selector panels mounted on fwd bulkheads in ER • Barry vibration dampening engine mounts • Block heaters on main engines • 4" stainless steel prop shafts • (2) Federal Nibral 8-blade props (48" x 65.25") • Prop pockets • SeaStar hydraulic steering

Safety and Fire Protection A total of Size I Type: BC and Size A-II B:C II hand held dry chemical/halatron fire extinguishers were thoughtfully distributed throughout the vessel. Also onboard is a SeaFire FM-200 clean agent automatic engine compartment system with manual pull at the flybridge helm station. There are multiple sensors and audible alarms through the main system's monitor and an emergency engine room light.

- Hand held dry chemical fire extinguishers (described above) • SeaFire FM-200 automatic extinguishing system in engine room • Escape portholes in topsides hull, port & stbd master stateroom • Main engine start-in-gear safety protection • Swim platform boarding ladder • Type IV m.o.b. ring • Hatteras Yachts Monitoring System (monitor screen at helm station) • Plastimo inland waters 8 person emergency liferaft • Dual trumpet horn • Bell • Complement of type(s) I & III PFD's • Bilge high water alarm system with 6 sensors • ACR remote controlled spotlight • Multiple smoke and CO2 detectors throughout the accommodations area • Emergency engine crossover starting • CAT back-up manual engine controls at port & stbd, fb deck and the lower station at the aft deck • ACR RLB-35 G-Fix EPIRB w/hydrostatic release (S/N 4433) battery good thru 4/2013 • Red overhead chart lights at helm • (6) Bilge pump indicator lights at helm

Tender/Toys The tender is cradled in chocks on the aft fly bridge deck. There is a MarQuipt TL2-1500 (1500lb) davit on the deck.

Basic Information

Category: Motor Yacht

Model Year: 2008

Year Built: 2008

Country: United States

Dimensions

LOA: 72' 0" (21.95m)

Beam: 20' 2" (6.15m)

Max Draft: 5' 4" (1.63m)

Speed, Capacities and Weight

Cruise Speed: 23 Kts. (26 MPH)

Cruise Speed Range: 311

Displacement: 160000 Pounds

Water Capacity: 300 Gallons

Holding Tank: 350 Gallons

Fuel Capacity: 2200 Gallons

Accommodations

Total Cabins: 4

Total Heads: 3

Hull and Deck Information

Hull Material: Fiberglass

Engine Information

Engines: 2

Manufacturer: CAT

Model: C32

Fuel Type: Diesel

DETAILED INFORMATION

Accommodations

This 72' Hatteras features 4 staterooms, 3 cabin heads, a day head, plus crew accommodations aft. (8) televisions total. The wood treatments throughout the yacht are satin-finish African Mahogany. Upon entering the vessel from the boarding gate(s) via the forward deck, you enter the main salon and are immediately greeted by dark wood, rich fabrics and quality stonework. To port is a granite-topped bar with a 50" flat screen TV (mounted above). Proceeding forward from the stainless steel sliding salon doors, one immediately notices the raised-panel cabinetry on the forward bulkhead, both port and starboard. Forward of the wet bar to port is a varnished dining table which seats six. Two glass-faced cabinets occupy the port forward bulkhead and house the china and formal flatware. Forward also to port and starboard are high gloss wood columns and high gloss crown molding. Raised panel cabinets below house other wares. Both countertops on the cabinetry are covered with a light colored granite. Below deck the master stateroom is full beam and features an oversized king berth, walk-in closet and a his/hers head connected by a large glass stall shower. The area is finished in an assortment of marble and granite stonework with top of the line hardware. The stateroom has 6 oval-shaped portholes allowing ample light to enter the space. The three additional staterooms are also finished in satin African Mahogany and the heads have stonework consistent with the rest of the vessel. All staterooms have flat screen HDTV's and SMX AC Controls as well. Carpet runners throughout.

- Satin-finished African Mahogany Wood treatments throughout
- Designer low-profile carpeting throughout
- Custom wood detail in salon headliner
- Venetian-style Hunter-Douglas blinds in salon
- Finished Mahogany Valances
- Granite topped bar with chairs
- 50" flat screen HDTV
- 20" flat screen HDTV (on aft deck in locking drop-down cabinet in overhang)
- Full beam Master with ensuite heads
- Custom fabrics and soft goods throughout vessel
- Staterooms are all appointed with satin-finished African Mahogany
- Port & starboard guest cabins have factory installed port lights

Fly Bridge

The 72' Hatteras M/Y features a generous fly bridge with an integrated hardtop and a 3-panel glass windshield. There is a removable EZ2CY and traditional Strata-Glass 3-sided enclosure with aft curtain for foul weather. The space is air conditioned for comfortable cruising during the summer months, as well. Aft of the enclosure is the boat deck complete with 1500lb davit and chocks. To port and starboard on the tender decks are wind stations outboard. Also to starboard on this deck are dual stainless steel Miele BBQ grills in a hideaway molded cabinet. Proceeding forward from the boat deck, the covered fly bridge has full carpeting, which is also removable. To starboard, there is a large upholstered wrap around seating area with two small pedestal tables, both topped in dark wood. To port, there is a smaller seating area which is just aft of the flybridge wetbar. The bar top is dark wood and the area is complete with 3 built-in upholstered pedestal bar stools, a refrigerator, sink, icemaker and storage.

- MarQuipt TL2-1500 davit
- U-Line refrigerator
- (2) Gaggenau 120-volt grills
- Overhead lights in hardtop
- 3-panel glass windshield w/3 wipers
- 3-sided EZ2CY and traditional Strata-Glass enclosure
- Port & stbd wind/backup

engine controls • (4) Air conditioning zones & reverse cycle heating w/digital CruiseAir SMX controls • Stereo speakers

Galley/Laundry

Forward of the main salon is the country galley. All wood treatments are satin finished African Mahogany. Two steps lead up from the salon to the galley. Upon entering the appliances and island counter top are to port and the side by side Sub-Zero refrigerator is to starboard. Aft of the fridge just before entering the galley is the day head. There is a single window in the day head as well. The country galley seating is all the way forward below the forward windows. There is a wrap around leather upholstered dinette with seating for six. The table is an earth tone granite consistent with the galley countertop. The flooring in the galley is Amtico in teak and holly style. • KitchenAid 4-burner ceramic cooktop • Whirlpool convection oven w/broiler • Whirlpool dishwasher • Whirlpool trash compactor • Badger in sink trash disposal • Sharp carousel microwave/convection oven • Granite countertops throughout • Amtico "teak & holly" soles • Leather upholstered dinette w/seating for six • Island counter to port • (2) wing doors (fwd port & stbd) to side decks from galley • Whirlpool stacked washer/dryer in stateroom companionway • Central vacuum system w/multiple outlets for hook up

Hull/Deck

The hull above the waterline was finished in spray urethane paint (Alexseal Paint) with highlight striping. The deck and cabin superstructure are of fiberglass construction, also sprayed with Alexseal Paint and sprayed nonskid on the decks. The 72' MY also features full walkaround decks from the aft deck area all the way forward. There are several polished stainless steel "hoop-style" rails around the entire walkaround. The aft deck area is teak soled and there is a molded stairwell to the fly bridge in the port corner of the aft deck. The steps are also finished in teak sole. There is also a forward facing built in seating area with a varnished wood pedestal table on the aft deck for outdoor dining. The seating area is upholstered and has a full cover for protection. On the starboard corner of the aft deck overhang is drop down LCD HDTV in a locking cabinet. There are also stereo speakers and overhead lights on the overhang. • 20" Sharp Aquos LCD HDTV in locking drop down cabinet overhead of aft deck • Teak soles on aft deck • Full non-skid walkaround decks • Stainless steel deck hardware (cleats, chocks, hausers, ect.) • Maxwell 4000 hydraulic anchor windlass w/chain gypsy, capstan drum, main engine PTO, and dual foot (up/down controls mounted on the foredeck • Audio system control, LCD keypad and (2) Pioneer Marine speakers on aft deck • Boarding gates (P&S) side decks • MarQuipt Tide Ride boarding ladder in hidden compartment in side at the superstructure • 100lb non magnetic grade stainless steel plow anchor w/approx 250' of galvanized 3/8" G4 high tensile chain • Aft swim platform w/boarding ladder (hideway) • (3) 10" diameter overhead compartments, port & starboard sides to store fenders • (4) underwater lights • Resin-infused solid fiberglass hull bottom • Resin-infused fiberglass stringers (steel laminated in stringers @ engine mount areas) • Engine room bulkheads and decks are of resin-infused composite construction using PVC foam core w/layers of fiberglass laminate on each side

Electrical System

The primary electrical system aboard is 24 and 12 volt, based on multiple batteries feeding via main battery selector switches to distribution via multiple 24 & 12 volt circuit breaker panels w/a 24 volt to 12 volt converter. The 24 & 12 volt system is supplemented by a 240/120 volt shorepower system via (2) Glendinning 100 amp power cords forward and (2) Glendinning 100 amp power cords aft. • 12-volt electronics circuit breaker panel mounted beneath flybridge console w/AC-DC converter • (4) Deka 8D conventional lead-acid batteries wired in series parallel for two 24 volt battery banks (in covered fiberglass boxes in ER) • GFCI protected outlets throughout vessel • Automatic battery paralleling system w/switch at helm station • AC distribution panels w/magnetic circuit breakers • AC switching panel w/source selector switches, digital volt meter, ammeter, frequency meter, generator start/stop controls, voltage boost tap switch and interlock selector • (2) Jefferson Electric isolation transformers • MasterVolt 24 volt 75 amp three step marine grade battery charger w/solid state isolator • (2) Onan 27.5 kW generators • Engine driven alternators • Navigation lights • Ground fault protection on AC receptacles and lighting circuits

Electronics & Navigation Equipment

The upper helm station on the 72' Hatteras is generously outfitted with electronics. The area has ample visibility on both sides as well as down to the bow and foredeck through the large windshield. For easy maneuvering around the dock, there are (3) sets of back-up/wing controls: (2) on the boat deck (P&S) and (1) below on the aft deck. All are equipped with throttles, gears and bow thruster joystick. • Garmin • (2) RayMarine G-Series color GPS plotters with GPM-400 processors • (2) Icom IC-M604 VHF radios at helm • KVH M7 TracVision satellite reception system providing depth 72-mile radar w/digital split range radout and a 6' open array scanner • ELBEX video monitoring system w/flybridge processor, remote control and both aft deck and ER compartment telescoping cameras • CAT digital engine displays • (4) separate DSS SAT receivers • ACR spotlight pointpad • Bow & stern thruster control • TRAC digital display for stabilizers • Newmar loud-hailers (fwd & aft) • (2) Furuno RD-30 multi-function digital displays w/depth, water temp, air pressure, air temp, humidity, wind speed, wind direction, vessel speed, ect. • RITCHIE Powerdamp dashmount compass • Simrad AP-25 24volt hydraulic autopilot system • Wi-Fi • (2) Onan 27.5 KW 120/240 volt generators • Hartzell 240-volt ER blowers • ZF Gears (model 2350) reduction gears 4.00:1 ratio • Packless shaft glands (freshwater cooled) • Dual RACOR primary fuel filters on each main engine • Fuel transfer system (day tank and two secondary tanks) • Seachest w/sea strainers (sea water intake) • Back up CAT digital/analog engine data displays mounted above each engine in ER • Polyethylene water lines • 24-volt DC bilge and sump pumps, two at 2000 gph and six at 3700 gph with heavy duty float switches and guards • Bronze/chrome ball valves through bolted in solid fiberglass on all underwater through hull fittings w/electrical bonding throughout • Fiberglass water tanks • Electric fuel priming pumps 24 volt DC, engines • AC & DC distribution panels • Gray water tanks w/230-volt AC sewage

pump - plumbed for dockside - 185 gallons • Black water - 300 gallons • Reverse Osmosis watermaker (upgrade) • Bennett Trim Tabs w/ controls at helm (hydraulic) • ABT Trac Hydraulic STabilizers w/digital display at helm station • Hydraulic dual prop bow thruster w/control at helm (also controls at wing stations and aft deck station) • (3) Fuel tanks AFT (740 USG) MID (1020 USG) FWD (460 USG) Fuel tanks are molded fiberglass • Cablemaster retracting system for (2) 100 amp shore cords • Shore power hook ups forward and aft on vessel • Fresh water coil hose • 120/240 volt ER lighting • Battery selector panels mounted on fwd bulkheads in ER • Barry vibration dampening engine mounts • Block heaters on main engines • 4" stainless steel prop shafts • (2) Federal Nibral 8-blade props (48" x 65.25") • Prop pockets • SeaStar hydraulic steering

Safety and Fire Protection

A total of Size I Type: BC and Size A-II B:C II hand held dry chemical/halatron fire extinguishers were thoughtfully distributed throughout the vessel. Also onboard is a SeaFire FM-200 clean agent automatic engine compartment system with manual pull at the flybridge helm station. There are multiple sensors and audible alarms through the main system's monitor and an emergency engine room light. • Hand held dry chemical fire extinguishers (described above) • SeaFire FM-200 automatic extinguishing system in engine room • Escape portholes in topsides hull, port & stbd master stateroom • Main engine start-in-gear safety protection • Swim platform boarding ladder • Type IV m.o.b. ring • Hatteras Yachts Monitoring System (monitor screen at helm station) • Plastimo inland waters 8 person emergency liferaft • Dual trumpet horn • Bell • Complement of type(s) I & III PFD's • Bilge high water alarm system with 6 sensors • ACR remote controlled spotlight • Multiple smoke and CO2 detectors throughout the accommodations area • Emergency engine crossover starting • CAT back-up manual engine controls at port & stbd, fb deck and the lower station at the aft deck • ACR RLB-35 G-Fix EPIRB w/hydrostatic release (S/N 4433) battery good thru 4/2013 • Red overhead chart lights at helm • (6) Bilge pump indicator lights at helm

Tender/Toys

The tender is cradled in chocks on the aft fly bridge deck. There is a MarQuipt TL2-1500 (1500lb) davit on the deck.

Exclusions

Owner's personal belongings.

Disclaimer

The Company offers the details of this vessel or yacht in good faith but cannot guarantee or warrant the accuracy of this information nor warrant the condition of the vessel. A buyer should

instruct his representatives, agents, or his surveyors, to investigate such details as the buyer desires validated. This vessel or yacht is offered subject to prior sale, price change, or withdrawal without notice.

PHOTOS

Profile



Bridge



Engine Room



Galley

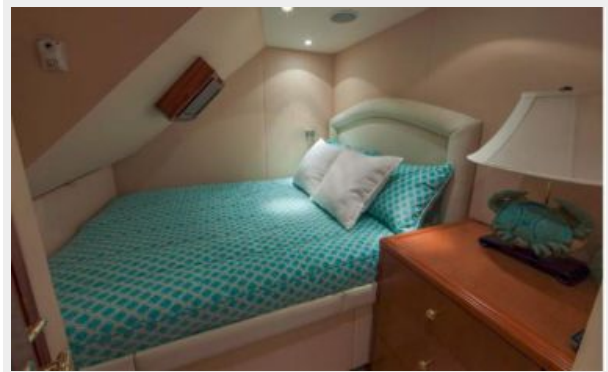


Profile

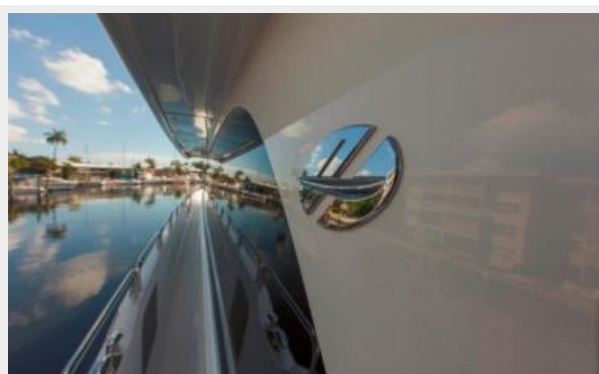
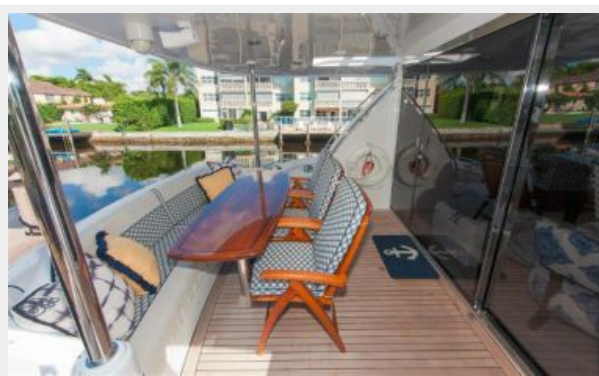


Transom

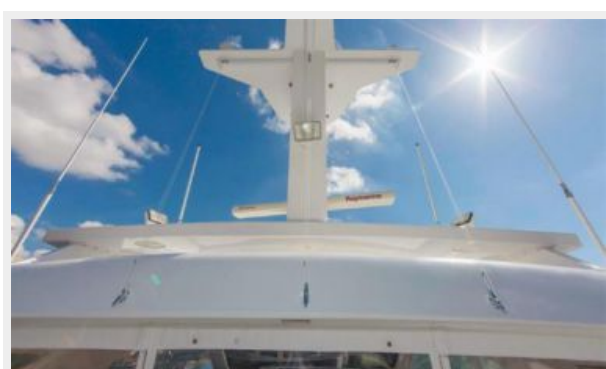


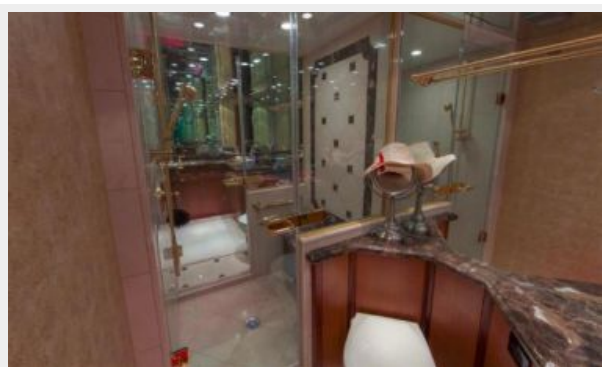
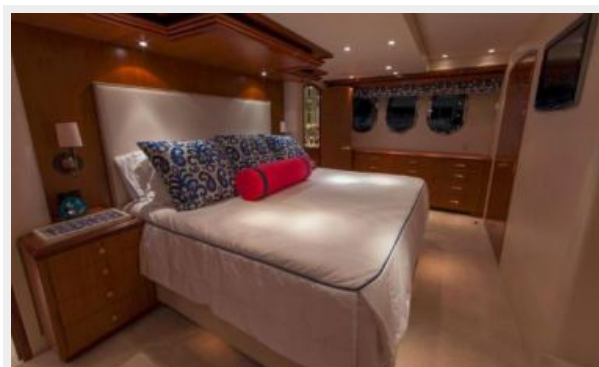
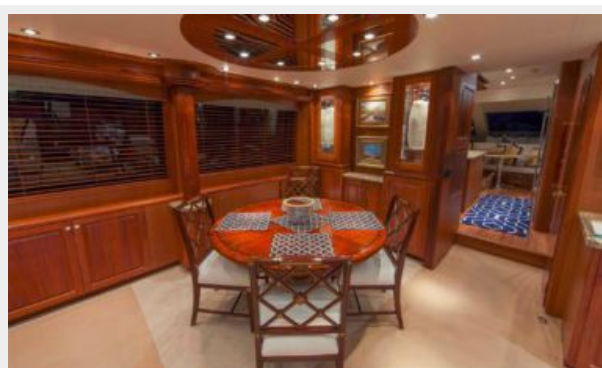
Helm**Master Stateroom****Salon****Sea Doo****Stateroom****Stateroom**

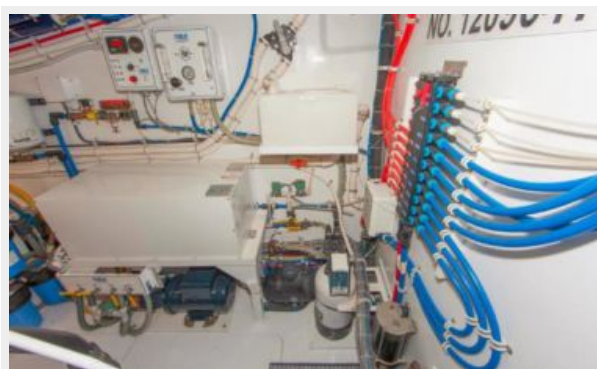
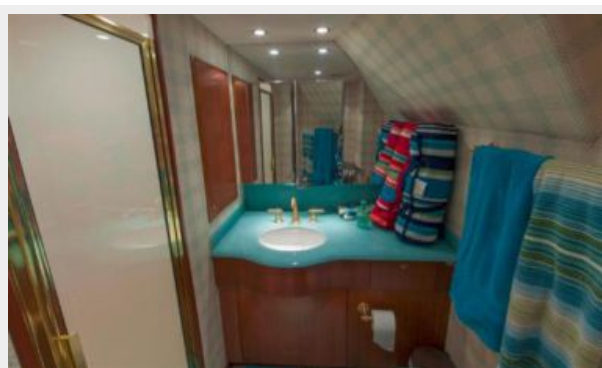
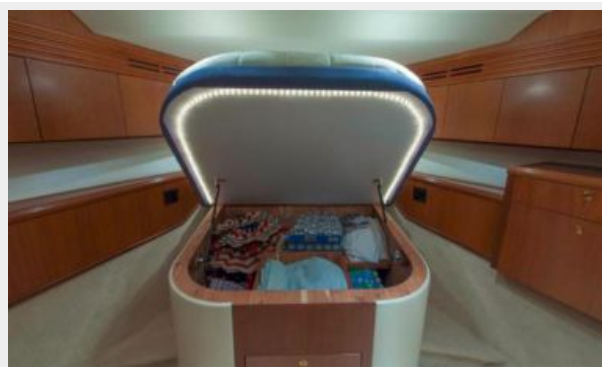
VIP Stateroom











CONTACTS

Andrey Shestakov, leading yacht broker of the sales department of Shestakov Yacht Sales Inc. Shestakov Yacht Sales Inc., the official representative of the Miami/Fort Lauderdale FL headquarters.

Contact details

Email:
andrey@shestakovyachtsales.com

Web: shestakovyachtsales.com/en/

Telephones

USA: **+1(954)274-4435**

Office hours

Monday – Saturday: **9:00 - 21:00 EDT**

Sunday: **closed**

Address



Harbour Towne Marina, 850 NE 3rd St,
STE 213, Dania, FL 33004