

SUZY Q — CABO



Builder: CABO

LOA: 31' 0" (9.45m)

Year Built: 1998

Beam: 12' 5" (3.78m)

Model: Sport Fisherman

Max Draft: 3' 2" (0.97m)

Price: PRICE ON APPLICATION

Location: United States

Our experienced yacht broker, Andrey Shestakov, will help you choose and buy a yacht that best suits your needs **Suzy Q — CABO** from our catalogue. Presently, at Shestakov Yacht Sales Inc., we have a wide variety of yachts available on our sale's list. We also work in close contact with all the big yacht manufacturers from all over the world.

If you would like to buy a yacht **Suzy Q — CABO** or would like help answering any questions concerning purchasing, selling or chartering a yacht, please call **+1(954)274-4435**

TABLE OF CONTENTS

TABLE OF CONTENTS	2
SPECIFICATIONS	3
Overview	3
Basic Information	3
Dimensions	3
Speed, Capacities and Weight	3
Accommodations	3
Hull and Deck Information	4
Engine Information	4
DETAILED INFORMATION	5
Accommodation & Layout	5
Galley	5
Electronics	6
Fishing Equipment	6
Additional Features & Equipment	6
Exclusions	7
Disclaimer	7
PHOTOS	8
CONTACTS	18
Contact details	18
Telephones	18
Office hours	18
Address	18

SPECIFICATIONS

Overview

The "Suzy Q" is a fully-rigged offshore machine with many recent upgrades. With only 1668 original hours on her CAT 3116s, she will provide years and years of use. The owner has recently invested considerable time, money and effort in getting her ready for her next owner. 1,000 service completed Spring 2016 (all coolers, injectors, etc), new turbos, new cutlass bearings, shafts aligned, props tuned, new raw water pumps on the engines, oil change (oil analysis from prior to oil change is available), new full enclosure, new underwater lights, new LED spreader lights on tower, recent full detail (interior and exterior), mostly new electronics (GARMIN) and the list goes on. The boat looks much newer than her vintage and has been very well kept. Fully loaded for serious offshore fishing and equally suited for weekend cruising. Please click "full specs" and photos for more details about this awesome boat. Low hour Westerbeke 5kw generator.

Basic Information

Category: Sport Fisherman

Model Year: 1998

Year Built: 1998

Country: United States

Dimensions

LOA: 31' 0" (9.45m)

Beam: 12' 5" (3.78m)

Max Draft: 3' 2" (0.97m)

Speed, Capacities and Weight

Water Capacity: 50 Gallons

Fuel Capacity: 350 Gallons

Accommodations

Total Cabins: 1

Hull and Deck Information

Hull Material: Fiberglass

Engine Information

Engines: 2

Manufacturer: Caterpillar

Model: 3116

Engine Type: Inboard

Fuel Type: Diesel

DETAILED INFORMATION

Accommodation & Layout

Since the inception of Cabo Yachts, the name has been synonymous with the ultimate pedigree in mid size sportfishers. From the design, construction methods to fit and finish and overall performance, Cabo set the pace for the rest of the playing field to follow. Built as a serious bluewater fishing machine, but finished as a family cruiser, the Cabo 31 has been laid out and designed to cater to various crowds.

Initially entering the cockpit of the Cabo 31, the 12'5" beam is immediately felt and utilized to provide maximum space and comfort. "Suzy Q" was built to fish, and her cockpit amenities are numerous. Aft, there is a transom door and an in-transom fish box, as well as a much larger one located in the sole. Forward to port is the bait and tackle center with drawer-style tackle storage, sink, and fresh-water washdown. To starboard forward is a large insulated live-well which can also serve as a drink box, and a raw-water washdown. A molded step on both sides gives easy access to the side decks and bow.

Stepping up to the helm deck, "Suzy Q" features seating for six with a forward facing bench-style helm seat to starboard, and a jump-seat just aft. To port is a bench-style settee with tackle storage beneath. This helm-deck arrangement is rare on the Cabo 31', and is much more favorable because it really opens up the space at the helm deck. The engine room is accessed via hydraulic deck lift as well as centerline hatch in helm deck sole.

The cabin is accessed down a few steps from the helm deck. This space features an enclosed head with shower to port, with galley just forward. Opposite the galley is an L-shaped settee with storage beneath that converts to over/under bunks. A hanging locker is forward of the settee, and the V-berth is forward with a convertible table that drops down as a filler piece for the forward berth. She has a teak and holly sole, 6'6" headroom, rod storage rack located in the head, additional rod storage located on either side of the forward berth, Dometic Air Conditioning with reverse cycle heat. She has a "yacht" finish, and is suitable for weekend cruising as well as offshore fishing.

Galley

- Corian countertops
- Teak and Holly Sole
- Sharp Microwave
- Kenyon single burner electric cooktop
- Norcold 6.0 Cu Ft AC/DC Marine Refrigerator with freezer
- Stainless Steel Sink
- Drawer and cabinetry storage
- Seaward 6 Gallon electric water heater

Electronics

- Furuno Navnet with 6kw open array radar
- Garmin GPSMap 7610 chart plotter (new 2016)
- Garmin VHF (new 2016)
- Robertson AP300 Autopilot
- Horizon VHF (back-up)
- Kenwood stereo system with speakers

Fishing Equipment

- Tremendous cockpit with non-skid surface and high gunnels with coaming pads
- Marlin tower with controls
- Rupp outriggers
- Live bait well
- Bait and tackle center with drawer storage
- Raw water washdown
- Fresh water washdown
- Rod storage in head and in V-berth
- New LED spreader lights
- Ten (10) tower-mounted rocket launchers
- Six (6) flush-mounted rod holders in gunnels

Additional Features & Equipment

- Westerbeke 5kw genset (233 original hours)
- Electric windshield vent
- Electric windlass
- Underwater lights
- High water alarm
- Dometic air conditioning system
- Electric head with tankwatch system
- Sea strainers
- Dripless shaft seals
- Oil change system
- Glendinning engine synchronizers
- Racor fuel filters for both mains and genset
- Battery charger
- Dockside water inlet
- 30 amp shore power service
- New 4-sided enclosure (aft curtain not seen in photos)

Exclusions

Owner's personal belongings.

Disclaimer

The Company offers the details of this vessel or yacht in good faith but cannot guarantee or warrant the accuracy of this information nor warrant the condition of the vessel. A buyer should instruct his representatives, agents, or his surveyors, to investigate such details as the buyer desires validated. This vessel or yacht is offered subject to prior sale, price change, or withdrawal without notice.

PHOTOS





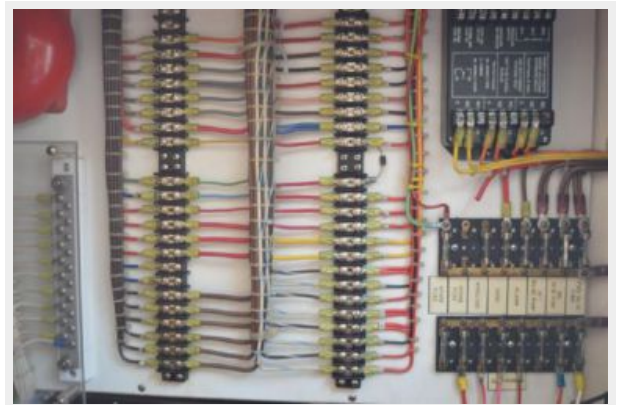




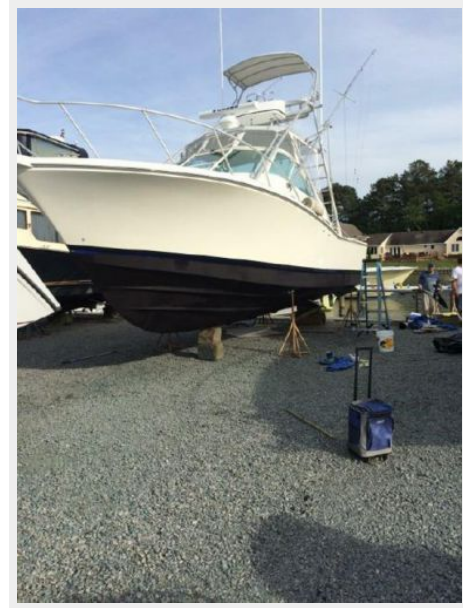












CONTACTS

Andrey Shestakov, leading yacht broker of the sales department of Shestakov Yacht Sales Inc. Shestakov Yacht Sales Inc., the official representative of the Miami/Fort Lauderdale FL headquarters.

Contact details

Email:
andrey@shestakovyachtsales.com

Web: shestakovyachtsales.com/en/

Telephones

USA: **+1(954)274-4435**

Office hours

Monday – Saturday: **9:00 - 21:00 EDT**

Sunday: **closed**

Address



Harbour Towne Marina, 850 NE 3rd St,
STE 213, Dania, FL 33004