

REEL CAPTIVATING — VIKING



Builder: VIKING

Year Built: 2001

Model: Sport Fisherman

Price: PRICE ON APPLICATION

Location: United States

LOA: 52' 0" (15.85m)

Beam: 17' 5" (5.31m)

Max Draft: 5' 1" (1.55m)

Our experienced yacht broker, Andrey Shestakov, will help you choose and buy a yacht that best suits your needs **Reel Captivating — VIKING** from our catalogue. Presently, at Shestakov Yacht Sales Inc., we have a wide variety of yachts available on our sale's list. We also work in close contact with all the big yacht manufacturers from all over the world.

If you would like to buy a yacht **Reel Captivating — VIKING** or would like help answering any questions concerning purchasing, selling or chartering a yacht, please call **+1(954)274-4435**

TABLE OF CONTENTS

TABLE OF CONTENTS	2
SPECIFICATIONS	4
Basic Information	4
Dimensions	4
Speed, Capacities and Weight	4
Accommodations	4
Hull and Deck Information	4
Engine Information	5
DETAILED INFORMATION	6
Layout	6
Salon/Galley/Dinette	6
Master Stateroom	6
VIP Stateroom - Forward	6
Guest Stateroom - Starboard	7
Fly Bridge	7
Electronics & Navigational	7
Cockpit Mezzanine	7
Electrical Equipment	7
Engine & Mechanical	8
Fishing Equipment	8
Hull & Deck	8
Updates	8
Exclusions	9
Disclaimer	9
PHOTOS	10
Fighting Chair Included. Rocket launcher not included	16
CONTACTS	19
Contact details	19

Telephones	19
Office hours	19
Address	19

SPECIFICATIONS

Basic Information

Category: Sport Fisherman

Sub Category: Convertible

Model Year: 2002

Year Built: 2001

Country: United States

Dimensions

LOA: 52' 0" (15.85m)

Beam: 17' 5" (5.31m)

Max Draft: 5' 1" (1.55m)

Speed, Capacities and Weight

Displacement: 62000 Pounds

Water Capacity: 205 Gallons

Holding Tank: 52 Gallons

Fuel Capacity: 1400 Gallons

Accommodations

Total Cabins: 3

Hull and Deck Information

Hull Material: Fiberglass

Engine Information

Engines: 2

Manufacturer: MAN

Model: 2842LE404

Engine Type: Inboard

Fuel Type: Diesel

DETAILED INFORMATION

Layout

The layout of this 52' Viking is the envy of the industry. She has been enhanced by the addition of a comfortable and practical mezzanine. In 2011, all the interior cabinets and locker doors were removed and sent to Viking where they were refinished.

Salon/Galley/Dinette

- L-shaped sofa with storage underneath
- Hi-lo teak table
- Concealed electric panel
- Drawer and cabinet storage
- Sound system
- Under counter sub-zero refrigerator and freezer units
- Microwave/convection oven
- Concealed 3-burner cooktop
- Abundance of storage space
- Dinette contains a teak table

Master Stateroom

- Queen berth
- (2) Nightstands
- A/C controls
- Television
- Oversized hanging locker
- Drawer and cabinet storage
- Ensuite head with enclosed shower

VIP Stateroom - Forward

- Centerline queen berth
- Large overhead hatch for natural light and ventilation
- A/C Controls
- Television
- Ample drawer and storage areas
- Semi-private head with stall

Guest Stateroom - Starboard

- Upper and lower bunks
- A/C controls
- Storage and hanging locker space available

Fly Bridge

- New 3 sided EZ2Y enclosure - 2016
- Viking hardtop
- Fiberglass helm pod
- Glendinning trolling valves
- Recessed electronics boxes
- Molded-in Quartz lights
- (2) Custom helm chairs with cushions and covers

Electronics & Navigational

- New Garmin electronics package installed in 2016 including 3kw Chirp sonar
- ICOM M 402 VHF
- ACR search light
- Simrad Autopilot

Cockpit Mezzanine

- Custom extra large transom fish box
- Underdeck fish box
- Transom door with solid coaming
- Fighting chair included - Not shown in photos
- (4) Rod holders
- Refrigeration and storage
- Engine room access

Electrical Equipment

- Isoboost transformer for 50A shorepower
- Automatic/manual battery charger
- Dockside electrical cables
- Onan 21.5 kw generator with 1300 hours
- (3) Battery banks
- 12v / 24v DC electrical system

- 110v / 220v A/C electrical system
- Glendinning cablemaster for 50 amp shorepower

Engine & Mechanical

- Onan 21.5kw generator with apx 1980hours
- (4) Cruisair air conditioning units
- Emergency engine stop
- Automatic manual halon fire extinguishing system
- Fuel priming system
- Oil transfer system
- Synchronizers
- Trim tabs
- Electronic trolling valves
- Power assist steering
- Awl-gripped engine room
- Auxiliary fuel tank / 200 gallons for a total of 1400 gallons
- Max Speed: 36 Knots
- Engine hours: Apx 2815

Fishing Equipment

- Pompanette rocket launcher (NOT INCLUDED)
- Rupp triple spreader outriggers
- Rupp center rigger
- Teaser reels
- (6) Rod rocket launcher on aft flybridge rail
- (2) Clearing rod holders in each cockpit haunch
- Fighting chair included

Hull & Deck

- Freshwater/saltwater washdown system
- ACR spotlight
- Cockpit indirect lighting
- Anchor
- Electric windlass
- Fiberglass step box

Updates

- Garmin 12KW radar
- Garmin (2) 15" and (1) 12" Screen
- CHIRP Transducer
- Cockpit re-painted
- Cutlass bearings, rudder bearings and seals
- Bottom Job
- Service records available on request

Exclusions

Owner's personal belongings.

Disclaimer

The Company offers the details of this vessel or yacht in good faith but cannot guarantee or warrant the accuracy of this information nor warrant the condition of the vessel. A buyer should instruct his representatives, agents, or his surveyors, to investigate such details as the buyer desires validated. This vessel or yacht is offered subject to prior sale, price change, or withdrawal without notice.

PHOTOS



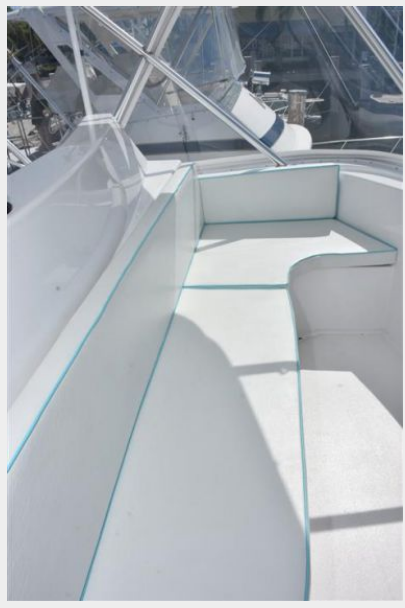




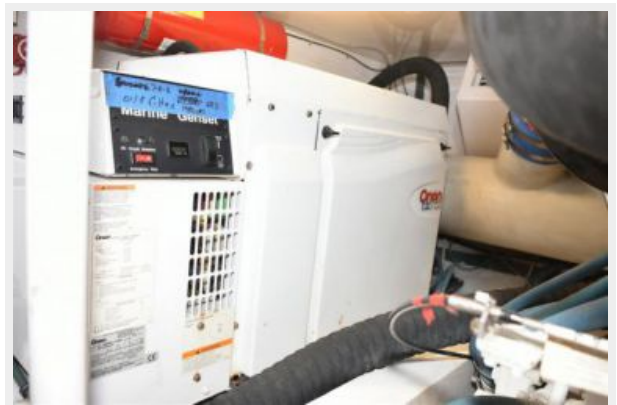








Fighting Chair Included. Rocket launcher not included







CONTACTS

Andrey Shestakov, leading yacht broker of the sales department of Shestakov Yacht Sales Inc. Shestakov Yacht Sales Inc., the official representative of the Miami/Fort Lauderdale FL headquarters.

Contact details

Email: andrey@shestakovyachtsales.com

Web: shestakovyachtsales.com/en/

Telephones

USA: +1(954)274-4435

Office hours

Monday – Saturday: **9:00 - 21:00** EDT

Sunday: **closed**

Address



Harbour Towne Marina, 850 NE 3rd St,
STE 213, Dania, FL 33004