

KENNEL UP — BERTRAM



Builder: BERTRAM

Year Built: 2008

Model: Sport Fisherman

Price: PRICE ON APPLICATION

Location: United States

LOA: 51' 0" (15.54m)

Beam: 16' 2" (4.93m)

Cruise Speed: 25 Kts. (29 MPH)

Max Speed: 30 Kts. (35 MPH)

Our experienced yacht broker, Andrey Shestakov, will help you choose and buy a yacht that best suits your needs **Kennel Up — BERTRAM** from our catalogue. Presently, at Shestakov Yacht Sales Inc., we have a wide variety of yachts available on our sale's list. We also work in close contact with all the big yacht manufacturers from all over the world.

If you would like to buy a yacht **Kennel Up — BERTRAM** or would like help answering any questions concerning purchasing, selling or chartering a yacht, please call **+1(954)274-4435**

TABLE OF CONTENTS

| | |
|------------------------------|----|
| TABLE OF CONTENTS | 2 |
| SPECIFICATIONS | 4 |
| Overview | 4 |
| Basic Information | 5 |
| Dimensions | 5 |
| Speed, Capacities and Weight | 5 |
| Hull and Deck Information | 5 |
| Engine Information | 5 |
| DETAILED INFORMATION | 6 |
| Extensive Features | 6 |
| FLYBRIDGE | 7 |
| Electronics & Navigation | 7 |
| Deck Equipment | 8 |
| Salon | 9 |
| Galley & Dinette | 10 |
| Master Stateroom | 10 |
| Forward Stateroom | 11 |
| Starbord Guest Stateroom | 11 |
| Master & Guest Heads | 11 |
| Engine Room & Machinery | 12 |
| Exclusions | 13 |
| Disclaimer | 13 |
| PHOTOS | 14 |
| CONTACTS | 22 |
| Contact details | 22 |
| Telephones | 22 |
| Office hours | 22 |
| Address | 22 |

SPECIFICATIONS

Overview

Only 51 Bertram 2008 For Sale In US

Absolutely Loaded & Ready To Fish or Cruise

LOCATES AT BAHIA MAR, FT LAUDERDALE

"Kennel Up" is a fine example of what the perfect cruising/fishing machine is. She has just about every available option and extra one could ask for including \$30,000.00 in Garmin upgrades in 2016. Starting with the very popular CAT C-18's to the three stateroom layout and spacious salon, all your Bahamas Cruising and long fishing trips will be beyond comfortable. The owner has spared no expense in her maintenance and she is ready for the fishing grounds. Easy to see at the Bahia Mar Yachting Center, call today to schedule your Private Showing.

Key Features:

- \$30,000.00 Garmin & Audio UpGrades In 2016
- Garmin 8530 Black Box, Garmin 8208, Garmin 170 Display
- Weather Module GXM52
- 2kw Transducer Chirp good to 8000 feet
- CAT C-18 1050HP Engines (860hrs)
- Bow Thruster
- 12000 BTU Bridge Air Conditioning
- 700 GPD WaterMaker
- Eskimo Ice Chipper
- Reverso Oil Changing System & Fuel Polishing System
- Kohler 20KW Generator (870Hrs)
- Quicklift Hydraulic 1000lb Davit w/Remote on Bow
- Close Circuit TV System w/4 Cameras
- Rupp Outriggers and Center Rigger
- Upgraded JL Audio Sound System
- Underwater Lights
- Cockpit Freezer
- Sleeper Sofa in Salon
- Power Actuated Electronics Console on Helm
- DYSID:3001465

Basic Information

Category: Sport Fisherman

Sub Category: Convertible

Model Year: 2008

Year Built: 2008

Country: United States

Dimensions

LOA: 51' 0" (15.54m)

Beam: 16' 2" (4.93m)

Speed, Capacities and Weight

Cruise Speed: 25 Kts. (29 MPH)

Max Speed: 30 Kts. (35 MPH)

Water Capacity: 185 Gallons

Holding Tank: 55 Gallons

Fuel Capacity: 1040 Gallons

Hull and Deck Information

Hull Material: Fiberglass

Engine Information

Engines: 2

Manufacturer: CAT

Model: C-18

Engine Type: Inboard

Fuel Type: Diesel

DETAILED INFORMATION

Extensive Features

Bow Thruster

Extensive Electronics Upgrades

(2) 12,000 BTU a/c units on flybridge

Full strataglass flybridge enclosure

Horizon Watermaker 700 gpd

Eskimo Ice chipper

Reverso Oil change system w/5 ports

Reverso Fuel Polishing system 210gph

Kholer 20kw Generator with only 240hr's (Upgraded from 15.5kw standard

Quicklift 1000lb Fully hydraulic davit w/remote CCTV DVR W/4 Cameras

Murray Bros 6 rod Teak Rocket launcher with drawer

Murray Bros Teak Table w/pedestal on flybridge Murray SS Rod holders- Side Pilasters (6 (6)
Flybridge Rod holders

Rupp Outriggers & Center rigger

Admiral canvas full cockpit cover, table and chair covers

Cockpit connection for electric downriggers Custom Storage drop boxes in cockpit floor and storage step box

Upgraded JL Audio in cockpit (4) with (1) subwoofer, Sirius sat radio, I-pod docks, and additional ICOM Remote VHF radio in salon Transom mounted Underwater lights

Raritan grey and black water tank sensors

Folding San Juan Shade for cockpit

ACR Searchlight on hard top

BFA 6 pearson life raft with cradle mounted foward,

Cockpit freezer

Swim platform

Upgraded sofas to ultra leather

Sleeper convertible sofa option

Carpet Runner

Power actuated Electronics Console

Upgraded wide step ladder to flybridge with bigger steps

FLYBRIDGE

Pipewelders Half tower w/recessed lighting

Murray Bros, Teak helm and companion pedestal seats

Murray Bros, Teak table for forward Lounge

Bow thruster control.

U-shaped lounge forward of helm

(2) 12,000 BTU Air conditioning units, one for forward sitting and one for behind console.

Full enclosure on fly bridge with forward EZ2CY.

Storage: Molded under lounge for life raft, console, molded portside storage

Stainless Steel steering wheel

Stereo and VHF locker with plexiglass cover

Instrument panel with: tach, oil engine pressure, engine water temperature, gear, oil pressure, voltmeter, fuel level, switches and fireboy discharge indicator

Systems monitors with alarms

AM/FM stereo, CD player with upgraded JL Audio speakers

Console handrails, port, starboard and forward

Distribution panel in locker

Electronics & Navigation

Furuno: Navnet VX2 Radar/Chart Plotter 25KW 72NM

Furuno: 6' Open Array Antenna

Navnet C-Map: N-MO22 NT Max Wide Chart for US East Coast and Bahamas

Furuno: GPS/WAAS Antenna

Furuno: DFF1 Digital Network BB Echosounder Module Dual Frequency 600W/1KW

Furuno: 526TID-HDD Transducer - Bronze Thru-Hull With Temp., Broadband/Highspeed Fairing Block - 50/200KHZ, 1KW, Built-in Diplexer, Works with Furuno DFF1, Transducer in Fairing Block

-Radar/Sounder Display: VEI-DM Series 15" Sunlight Display, Scratch Proof Glass

Northstar: 8000I Complete System with 15" Display, Black Box Processor, and Keypad

Northstar: 8000I GPS/WAAS Antenna

8000I C-Map: NA-P305 Preloaded Max Pro Wide Char for Florida and Bahamas

KVH: Tracvision M5 US SAT TV System w/Control Panel and Dual Output LNB

KVH: (4) H21 HDTV Direct TV Receivers

Channel Plus: 5545 Video Modulator for SAT TV

KVH: Tracphone 262 Complete SAT Phone System with INPARSAT Mini-M Service

Northstar 6100I

Simrad Autopilot

ICOM VHF/Shakespeare Antenna/Rupp Mount

Furuno RD30 Digital Depth/Xducer

Additional ICOM VHF in salon

Deck Equipment

Anchor locker

Anchor windlass: Electric with deck mounted foot controls

Suncon Plowmaster 60lb polished SS Anchor with chain

Davit: Quick lift 1000 lb fully hydraulic with wireless remote

Full anodized Aluminum Bow Rail

Cleats 2 Foward 2 Aft with transom Hawse Pipes , 4 springlines

Compressed heavy duty white vinyl rubrail with solid SS Inserts

Fuel fills, port and starboard

Fuel fill alarm

Fresh water tank fill

Hatches over engines for ease of access

Powder coated aluminum handrails.

Salon

Bose stereo system

32" LCD TV/CD/DVD Player

Direct TV Sat

Wet Bar

Upgraded carpeting

Upgraded Ultra leather sofas

Sleeper Sofa

Cherry wood cabinetry

Vinyl headliner (Whisper Wall System)

Wood Blinds

Central vacuum system

Air conditioning electronic control

120V AC receptacles

Lighting - 120V AC

Overhead rod storage

Carpet Runners

Galley & Dinette

Amtico flooring

Single lever hot and cold Faucet

Corian sinks and counters

3 burner glass cooktop

Microwave oven

U-Shape dinette with table

Storage Cabinet and drawers

2 Sub zero Refrigerators Drawer type

2 Sub Zero Freezers Drawer type

Optional plexiglass bottom drawers in upper cabinets

Master Stateroom

Queen Sized berth with underneath storage

Mattress, foam with spread pillows and shams

Mirrored aft bulkhead

Reading lights

Entertainment center with 19" LCD TV AM/FM/CD/DVD/Player

Direct TV

Hanging locker- full height,cedar lined

120v AC Receptacles

AC electronic control

Lighting 120v AC, 24v DC

Forward Stateroom

Queen sized berth with drawer storage beneath

Entertainment center with 19" LCD TV, AM/FM/CD/DVD/Player

Hanging locker, cedar lined with automatic light

Reading lights

120V Receptacles

AC Electronic control

Lighting 120V 24V

Open hatch overhead with shade and screen

Starbord Guest Stateroom

Side by side twin berths with underneath storage

Mattress - foam with spread, pillows and shams

Entertainment center with 19" LCD TV with AM/FM/CD/DVD/MP3 player

Direct TV Sat

Hanging locker, cedar lined with automatic light

Reading lights

Lighting, 120V AC and 24V

Master & Guest Heads

Corian countertop and sink

Amtico flooring

Stall shower with door and floor grate

Tecma electric toilet system (freshwater)

Mirrored overhead

120V AC GFI receptacles

Exhaust Blowers

Lighting, 120V AC and 24V DC

Engine Room & Machinery

Twin Cat C-18 Turbo diesel, fresh water cooled main engines with only 365 hours!

Water separators/Fuel filters and exhaust mufflers

Accoustical and thermal insulation in the engine room

Vibration dampening isolators for engines

Aquamet shafts

Bronze rudders and struts

Dripless shaft seals

Dual fuel filters-main engines

Automatic/Manual blower system for engine room

Bilge pumps (3) auto/manual

Electric hot water heater

Emergency bilge water evacuation system

Emergency engine shut down system

Engine and machinery room lighting AC and DC

Fixed fire extinguishing system for engine and machinery rooms with automatic and remote manual controls plus audible and visual discharge signals

Hydraulic steering with power assist pum

Seacocks, heavy duty manganese bronze

Koher 20kw Generator in lieu of factory 15.5kw with only 240hrs!

Seawater strainers for generator

A/C and saltwater washdown pump

240/120V AC Input and Main distribution panel with voltmeter, ampmeter, generator controls, magnetic circuit breakers and shore power selector switches

24V/12V DC Main distribution panel with voltmeter, ampmeter, magnetic circuit breakers and battery tester

Alarm monitoring systems: bilge flood signal for three compartments, black water tank indicator light, high-heat signal in engine and machinery rooms

Electrical pump out for toilet holding tank

Fresh water level gauge

Eskimo Ice chipper unit

HRO Watermaker unit (700gpd)

Reverso Fuel polishing system

Reverso oil change unit w/ 5 ports

Exclusions

Owner's personal belongings.

Disclaimer

The Company offers the details of this vessel or yacht in good faith but cannot guarantee or warrant the accuracy of this information nor warrant the condition of the vessel. A buyer should instruct his representatives, agents, or his surveyors, to investigate such details as the buyer desires validated. This vessel or yacht is offered subject to prior sale, price change, or withdrawal without notice.

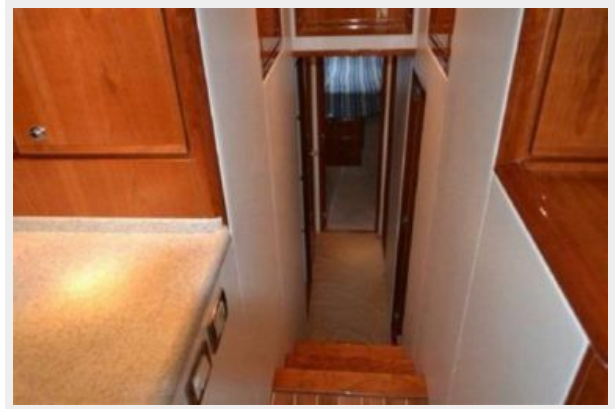
PHOTOS

















CONTACTS

Andrey Shestakov, leading yacht broker of the sales department of Shestakov Yacht Sales Inc. Shestakov Yacht Sales Inc., the official representative of the Miami/Fort Lauderdale FL headquarters.

Contact details

Email: andrey@shestakovyachtsales.com

Web: shestakovyachtsales.com/en/

Telephones

USA: +1(954)274-4435

Office hours

Monday – Saturday: **9:00 - 21:00** EDT

Sunday: **closed**

Address



Harbour Towne Marina, 850 NE 3rd St,
STE 213, Dania, FL 33004