

ARRECHO — AZIMUT



Builder: AZIMUT

Year Built: 2006

Model: Motor Yacht

Price: PRICE ON APPLICATION

Location: United States

LOA: 116' 0" (35.36m)

Beam: 24' 3" (7.39m)

Min Draft: 6' 6" (1.98m)

Max Draft: 7' 0" (2.13m)

Cruise Speed: 15 Kts. (17 MPH)

Max Speed: 24 Kts. (28 MPH)

Our experienced yacht broker, Andrey Shestakov, will help you choose and buy a yacht that best suits your needs **Arrecho — AZIMUT** from our catalogue. Presently, at Shestakov Yacht Sales Inc., we have a wide variety of yachts available on our sale's list. We also work in close contact with all the big yacht manufacturers from all over the world.

If you would like to buy a yacht **Arrecho — AZIMUT** or would like help answering any questions concerning purchasing, selling or chartering a yacht, please call **+1(954)274-4435**

TABLE OF CONTENTS

TABLE OF CONTENTS	2
SPECIFICATIONS	7
Overview	7
Basic Information	7
Dimensions	7
Speed, Capacities and Weight	8
Accommodations	8
Hull and Deck Information	8
Engine Information	8
DETAILED INFORMATION	9
Description	9
Vessel walkthrough	9
Salon & Dining area	9
Galley	10
Lobby	10
Pilothouse	10
Master stateroom	11
Master Bath	11
VIP staterooms	12
VIP Baths	12
Crew quarters	12
Fly Bridge	12
Main deck and Cockpit	13
Main deck forward	14
Safety & Navigation equipment	15
Electrical	15
Generators & Electric	16
Mechanical equipment	16

Laundry	16
Tenders	17
Safety & fire equipment	17
Upgrades 2013/2015	17
Excluded from the sale	18
Exclusions	18
Disclaimer	18
PHOTOS	19
Main Salon	19
Profile	19
MainSalon	19
Salon Bar	19
Salon TV	20
Salon TV	20
Dining/Salon view aft	20
Dining room	20
Dining table	21
Master bed	21
Master statroom	21
Master stateroom	21
Master stateroom	22
Master stateroom	22
Master bath	22
Steps up to Flybridge fro aft deck	22
VIP Bed	23
Steps down from Fly Bridge	23
VIP Bed	23
VIP Bath	23
Guest bath	24

VIP stateroom	24
Lower deck foyer	24
Guest cabins	25
Guest cabins	25
Guest cabin	25
Guest cabin	25
Guest bath	26
Media room	26
Companion way view forward	26
Galley	26
Galley	27
Galley	27
Galley	27
Appliances	27
Galley	28
Galley	28
Galley	28
Galley	28
Pilothouse helm station	29
Pilothouse settee	29
Sliding hatch to Flybridge	29
Steps up to Flybridge from Pilothouse	29
Upper deck seating	30
Bridge Helm station	30
Upper deck appliances	30
Upper deck seating	30
Upper deck bar	31
Sun Pads	31
Whirlpool	31

Upper deck table	31
Seating	32
Bridge deck view aft	32
Side decks	32
Aft deck entry doors	32
Aft deck sink	33
Aft deck table	33
Aft deck table	33
Aft deck table & seating	33
Engine room	34
Machinery	34
Engine room	34
Machinery	34
Machinery	35
Machinery	35
Utility room electrical panel	35
Utility room	35
Tender in Garage	36
Cable master tubs utility room	36
Tender in the garage	36
Transom garage door open	36
Anchor windlass	37
Anchor	37
Bow view	37
Running gear	37
Shafts	38
Water makers	38
Profile underway	38
CONTACTS	39

Contact details	39
Telephones	39
Office hours	39
Address	39

SPECIFICATIONS

Overview

The Azimut 116 is a super yacht representing Italian elegance at its best. The sleek sophisticated design emphasizes natural light and warmth and with its mirrored windows reflects the epitome of modern Italian yacht design. Custom beautifully appointed interior décor and the fit and finish is superb throughout the yacht. Accommodations provide for 10 Owner's and Guests in (5) staterooms plus separate crew quarters for (6) in three cabins. This yacht has known only one owner and has been maintained to faultless condition by a full time professional crew. Owner has taken delivery of a new yacht and is very motivated to make a sale> OFFERS ENCOURAGED. Now conveniently located in Fort Lauderdale, Florida until sold

Basic Information

Category: Motor Yacht

Sub Category: Flybridge

Model Year: 2006

Year Built: 2006

Refit Year: 2008

Refit Type: upgrades

Country: United States

Vessel Top: Hardtop

Fly Bridge: Yes

Dimensions

LOA: 116' 0" (35.36m)

LWL: 95' 8" (29.16m)

LOD: 116' 0" (35.36m)

Beam: 24' 3" (7.39m)

Min Draft: 6' 6" (1.98m)

Max Draft: 7' 0" (2.13m)

MFG Length: 116' 0" (35.36m)

Speed, Capacities and Weight

Cruise Speed: 15 Kts. (17 MPH)

Cruise Speed RPM: 1700 Kts.

Max Speed: 24 Kts. (28 MPH)

Max Speed RPM: 21150 Kts.

Displacement: 143 Pounds

Gross Tonnage: 190 Pounds

Water Capacity: 736 Gallons

Holding Tank: 380 Gallons

Fuel Capacity: 4756 Gallons

Accommodations

Total Berths: 5

Sleeps: 10

Captain Cabin: True

Crew Cabin: 3

Crew Berths: 5

Crew Sleeps: 6

Crew Heads: 2

Hull and Deck Information

Hull Material: Fiberglass

Hull Configuration: Modified V-Hull

Hull Color: White

Hull Designer: Azimut

Exterior Designer: Stefano Righini

Interior Designer: Stefano Righini

Engine Information

Engines: 2

Manufacturer: MTU

Model: MTU 16V2000

Engine Type: Inboard

Fuel Type: Diesel

DETAILED INFORMATION

Description

The Azimut 116 is a super yacht representing Italian elegance at its best. The sleek sophisticated design emphasizes natural light and warmth and with its mirrored windows reflects the epitome of modern Italian yacht design. Custom beautifully appointed décor and superb fit and finish throughout the yacht. Accommodations provide for Five Owner's and Guest staterooms each with en-suite heads. The upper deck was specifically designed for entertaining. It includes a very large wrap around lounge and table, a bar with built-in stools and a whirlpool surrounded by sun pads. This yacht has known only one owner since new and has been maintained to faultless condition with continuous upgrades by a full time professional crew. Owner has taken delivery of a new yacht and is very motivated to make a sale now. OFFERS ENCOURAGED!

Vessel walkthrough

MAIN SALON: Features elegant tranquil décor, ample seating in the Salon has been provided with three sofas upholstered in soft aqua lime. Two cocktail tables flank the sofas. A full service customized aft bar easily services the Salon and aft deck areas. The Main Salon/Dining bulkhead has been highlighted by a bench made wood framed decorative mirror. The Glass topped dining table is flanked by woven rattan chairs in rich tobacco finish. To starboard is the main foyer and powder room with handcrafted inlaid mosaic floor. The commercial grade galley is to port and features cabinetry with full service butler's pantry and state-of-the-art appliances to satisfy the needs of any chef. Moving forward is the Dinette/Media room which can be closed off from the Galley for private entertaining. The Master stateroom is located aft with a private access staircase and en-suite bath. Port & Starboard VIP staterooms each have full size beds and private baths. Two additional guest cabins each have twin lower berths and a Pullman. The upper deck is accessed from either the aft deck or from the pilothouse. The Upper deck was specifically designed for entertaining. It includes a very large wrap around lounge and table, a bar with built-in stools and a whirlpool surrounded by sun pads. The crew cabins (2) are forward with private captain cabin. Engine room, utility room and tender garage are accessed from the aft deck.

Salon & Dining area

- Bar cabinet on starboard side, ice maker, wine cooler, sink
- Bottle and glass holder cabinet next to the bar
- Three stools
- Sofa (3)
- Armchairs
- Coffee tables, furniture and drawers

- TV Cabinet on starboard side W/Hi-Lo mechanism
- A/C controls
- Curtains & carpets
- Dining area is forward area of the Salon, oval extendable dining table and chairs
- Cabinet to store dishes, glasses and cutlery on side of dining area

Galley

The industrial galley is to port with a full service butler's pantry and state-of-the-art stainless appliances to satisfy the needs of any chef. There is a prep area/pantry with Miele Espresso machine, wine cooler, dishwashers, food warming lights and sink. Access to the galley is through the pantry. The pantry allows access to the crew quarters and is accessible from the port bow side of the salon as well. Miele sink Gaggenau electric 4-burner countertop with hood Gaggenau pot holder Miele oven Miele dishwasher 6-door cold plate refrigerator/freezer G.E. Profile microwave Classic trash compactor Scotsman icemaker Miele washer and dryer Pantry wine chiller Two Subzero under counter refrigerators Food warming lamps

Lobby

The lobby is placed on the starboard side with access to the Dining area, staircase to the Master stateroom and guest cabins, powder room, utility room and wheelhouse.

Pilothouse

- Console in leather with varnished aluminum panels
- Electrical helm seat
- L-shaped sofa against the aft bulkhead
- Area for charts and chart drawer
- Cabinets
- Staircase allows access to the flybridge
- Main engine controls with synchronizer
- Main engines and reversing gear gauges
- Instruments for navigation
- Bow thruster controls
- Electrical panel
- Rudder angle indicator
- Trim tabs control
- Touch screen with controls
- Rudder pump control
- Wipers

- Horn
- Navigation lights
- Anchor winches controls
- Search light controls
- Fire extinguisher electro-pump control
- Fuel electric pump
- Bilge electric pump control
- High bilge water level alarm
- Dimer for console lights
- Freshwater gauge
- Fuel level gauge
- Maneuvering intercom connecting flybridge, Main deck and engine room
- A/C controls
- Carpet, curtains

Master stateroom

The Master stateroom is accessible from the lobby area by a private staircase.

- Three oval portholes on each side
- Double bed with foam mattress
- Drawers underneath the bed
- Indirect lighting underneath the bed and on ceiling
- Spotlights on the ceiling
- Two night stands
- MEC 42" plasma TV with pop-down from the ceiling
- Yamaha home theatre with CD/DVD
- Two armchairs with coffee tables on port side
- Bar cabinets with fridge on the starboard side
- Drawers and vanity with pouf on the port side
- Direct TV receivers

Master Bath

- His & Hers bath aft area of the master stateroom
- Starboard side-Jacuzzi tub/washbasin with marble top
- WC/Bidet
- Cabinets
- Portside shower/washbasin
- Oval porthole

VIP staterooms

- (2) VIP Staterooms are accessed through the lobby area
- Double bed with custom mattress
- Indirect lighting underneath the bed and on ceiling
- Drawers underneath the bed
- Two nightstands
- Spot lights on ceiling
- (2) Oval portholes
- Cabinet with hanging bar, shelves, drawers and light

VIP Baths

- Jet WC
- Washbasin with marble tops
- Shower
- Cabinets and mirror
- Marble and doussie floor A/C ducts Air extractor Oval porthole Curtains

Crew quarters

- Crew quarters accessed from the Galley area
- (2) Crew cabins
- Two Pullman beds each cabin
- One captain cabin
- One of the two crew cabins can be converted into a laundry
- Captain cabin features a full size bed
- Drawers underneath the bed
- Wardrobe Cabinets
- Spotlights Opening porthole
- Fan coil
- Sony CD player with speakers
- Captain private head

Fly Bridge

- Main engines controls

- Bow thruster controls
- Main engines and reversing gear gauge
- Instruments for navigation
- Trim tabs control/indicator
- Rudder angle indicator
- Forward anchor winch control
- Electric search light
- Horn and navigation lights controls
- Fire extinguisher pump control
- Maneuvering intercom connecting the pilothouse, main fore & aft decks, engine room
- Helm seats
- Bar furniture with sink, fridge and icemaker on the port side
- Round barbecue cabinet on port side
- Stools Extendable table in teak for 12 persons
- Wide fiberglass sofas
- Fiberglass arch with navigation lights, antennas and searchlight
- Two electric Bimini tops integrated in the fiberglass arch structure
- Water jets tub integrated in the fiberglass cabinet
- Retractable shower
- Lights and watertight speakers
- Watertight lights
- Non skid flooring surface
- Windscreen in Lexan and stainless steel
- Loudspeakers for the stereo system
- Stainless steel handrails around aft area of the flybridge
- Drainage hole discharging outboard
- Covers for seating and console

Main deck and Cockpit

- Teak planked deck with edge coaming
- Teak cap rail with stainless steel hand rail on bulwark
- Five fairleads with cleats in stainless steel each side
- Spotlights for deck lighting
- Intercom in the forward and aft main deck
- Recessed area of superstructure for storage of mooring hooks
- Mirrored windows
- Watertight side doors for the access to the engine room galley and lobby
- Fuel and water fillers on each side of the superstructure
- Two side boarding gates on the bulwark in the cockpit
- Marquipt ladder for side access

- Curved door in stainless steel and tempered glass, for access to the Salon
- Two electric winches, 220 volt , 3 phase
- Staircase with teak steps and stainless steel handrails from aft cockpit to the flybridge
- Fiberglass furniture equipped with basin and small fridge in the cockpit, starboard side
- Fixed teak table with stainless steel bases, structural sofa with cushions
- Two loudspeakers in the ceiling of the cockpit
- Garage door integrated to the aft board, becoming a wide swimming platform when open
- Electro-hydraulic mechanism for opening/closing of the garage door
- Teak on the internal side of the garage door, teak on the swim platform when garage door is closed
- Two retractable cleats on the internal side of the platform
- Fiberglass staircases with stainless steel handrails at each side to descend to the aft platform
- Stainless steel gates, port and starboard side leading to the staircases
- Electro-Hydraulic retractable gangway in stainless steel and teak, stored inside the first step of the starboard staircase
- Recessed small peaks on the transom to receive water and hot/cold shower
- Launch & retrieve system for the tender
- Manual swimming ladder on stainless steel

Main deck forward

- Two reversible anchor winches
- Electrical vertical type , 220V 3-phase 4500
- Two galvanized steel anchors, 180Kg each
- Galvanized chain for each anchor
- Chain storage with drain and wash down pump
- Stainless steel bow anchor protection plates
- Sunbathing seat integrated on the vow
- Three windscreen wipers for front windows of pilothouse
- Windscreen covers
- Water tight speakers
- Fender storage integrated in the superstructure
- Fresh water hose bib
- Fire extinguisher hose
- Intercom system
- ADDITIONAL DECK EQUIPMENT:
- Port & starboard anchor windlass Maxwell series 6000
- (2) Hall anchors
- (2) 100 meter anchor chain
- (2) Electric Maxwell 3000 stern capstans
- Opacmare hydraulic passerelle

- Under water lighting
- Foredeck storage locker
- Forward Sunpad & seating lounge
- Anchor locker
- Walk-around side decks
- Port fiddle door for engine room access

Safety & Navigation equipment

Lower Helm Station: (3) computer screens for cameras, radar, Nobeltec Furuno RD-30 ACR search light Furuno Nav Pilot Furuno NavNet radar controller Azimut yacht control system Northstar 6100 split screen GPS American bow thruster control ABT-Trac stabilizer control system MTU engine controls throttle control center Panasonic 13 cameras port/starboard-Data control system Furuno VHF radio NVT Point Pad URP-102 Furuno NavTex NX-300 Satellite cell phone, internet (2) KVH domes UPPER HELM

STATION:

ACR search light

Furuno VHF radio Furuno NavNet radar controller Furuno Nav Pilot Twin MTU engine controls centers MTU engine controls throttle controls American bow thruster control

Electrical

- 110V AC 3 phase 60 Hz, for power circuits
- 24V DC for lighting circuits, low-power users, signals, emergency lighting and electronics
- Electrical wiring are housed in self-extinguishing closed PVC conduits
- Electrical wiring are anti flame materials and with proper size section related to the use
- Main electric control panels, control room (main panel), pilothouse
- Secondary panel are placed throughout the vessel, in strategic areas
- All equipment have ground junction with adequate cords and braiding of copper
- () 125 A, 380V, 60Hz shore power inlet located on the transom
- Main engine start batteries
- Generator start batteries
- MTU electronics batteries
- Automatic battery charger
- Frigomar air conditioning 25000 BTU
- Engine room venting system
- Electric extractor in the aft garage
- Aluminum lube oil tank (95 Gallons)
- Oil change system
- Centralized bilge system with compartment suction
- Emergency bilge pump

- 24V automatic bilge pumps in engine room, aft garage, cabins and bow peak
- Emergency suction on main engine seawater intake
- High water alarm each compartment
- (2) Structural fuel tanks mid ship and aft peak
- MTU fuel filters for main engines
- Racor filters for generators
- Glendinning cable master aft garage
- American stabilizers
- Six deep sea underwater lights

Generators & Electric

- Generators: (2) Kohler 65Kw with John Deere engines
- Generator hours: Port 8600 Starboard: 8600 (approx.)
- Output: 440 volts, Phase 3, 60Hz
- Shore power SAE 35, 120-580Volts, 3 phase 50-60Hz
- Batteries: (2) Main engines 12V & 220V alternators
- Generator Batteries: (2) 12V x 220 alt
- General service (12) 2V, Gel 2
- Emergency: (2) 24V X 100 Alt

Mechanical equipment

- (2) MTU 16V2000 M-91 Main engines 2000 HP each
- (2) ZF 2:7788.1 ratio reduction gears
- (2) Detra 4-bladed Nibral props
- W-4 Engine service (3500 hours)
- Extensive spare parts inventory
- Fuel polishing system
- Engine & Auxiliary generator logs available
- Air conditioning (16) air handling units
- Watermakers
- Trim tabs
- Stabilizers
- Bow thruster 100HP
- Hydraulic steering system
- Fresh water system

Laundry

- (2) Miele washer (pantry)
- (2) Miele Dryer (pantry)

Tenders

- Nautica Jet 15' w/115Hp inboard gasoline engine
- Center console with Bimini top

Safety & fire equipment

- Fire control system (12) detectors
- (3) 30Kg fixed CO2 system
- (6) Portable CO2 (Garage, machine room, Technical room)
- (17) ABC portable fire extinguishers
- (2) Seawater fire stations (fore & aft)
- (2) Viking 12 person lifer rafts
- (2) Life rings
- Flares

Upgrades 2013/2015

- New cushions
- New Nonskid on forward main deck
- New life rafts (2)
- New shafts and cutlass bearings
- New Saloon carpet
- New lower cabin carpets
- New carpets and flooring in the crew area
- Miele stovetop
- New Batteries
 - SYSTEMS SERVICED 2015 Bottom prepped and painted
 - Thru hull fittings serviced
 - Shafts & props serviced
 - Rudder rams serviced
 - Bow thruster serviced
 - Cutlass bearing serviced
 - Stabilizers serviced
 - Rudders serviced
 - New Zincs

- Hull waxed
- Waterline re-painted
- New aft deck teak steps
- New forward hatch teak
- New Non-skid fly bridge deck

Excluded from the sale

- Owners personal belongings
- FLIR Night vision system
- Any item with vessel name attached
- Vessel name reserved
- Any item aboard that is not specifically listed herein

An itemized exclusion list will be provided to buyer prior to an offer to purchase

Exclusions

Owner's personal belongings.

Disclaimer

The Company offers the details of this vessel or yacht in good faith but cannot guarantee or warrant the accuracy of this information nor warrant the condition of the vessel. A buyer should instruct his representatives, agents, or his surveyors, to investigate such details as the buyer desires validated. This vessel or yacht is offered subject to prior sale, price change, or withdrawal without notice.

PHOTOS

Profile



Main Salon



MainSalon



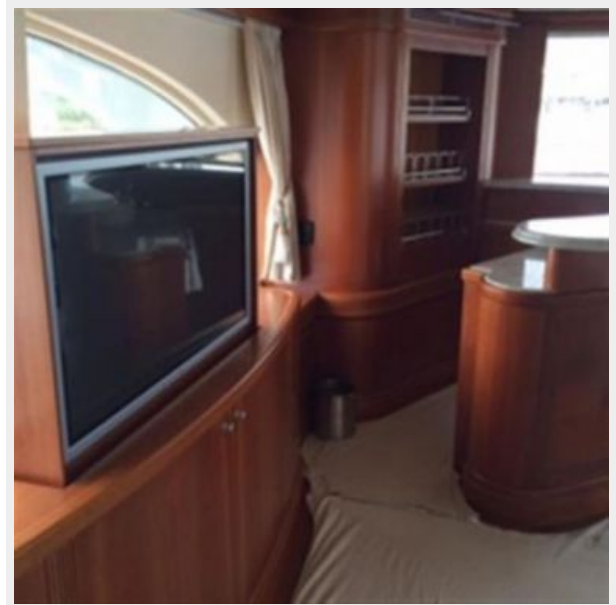
Salon Bar



Salon TV



Salon TV



Dining/Salon view aft



Dining room



Dining table



Master bed



Master statroom



Master stateroom



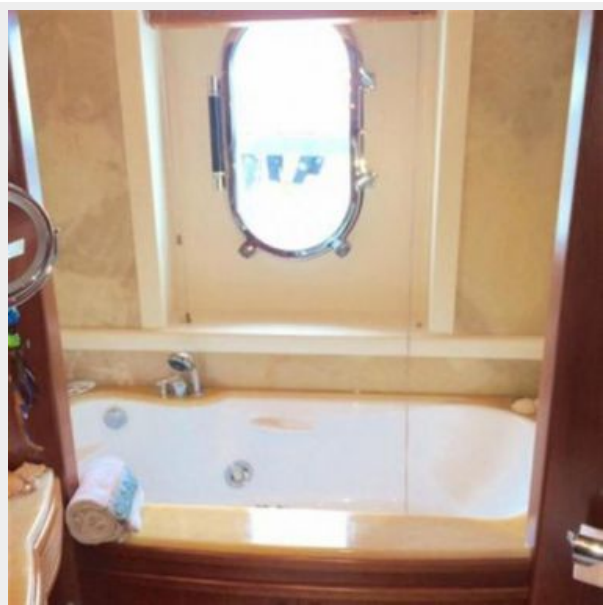
Master stateroom



Master stateroom



Master bath



Steps up to Flybridge fro aft deck



Steps down from Fly Bridge



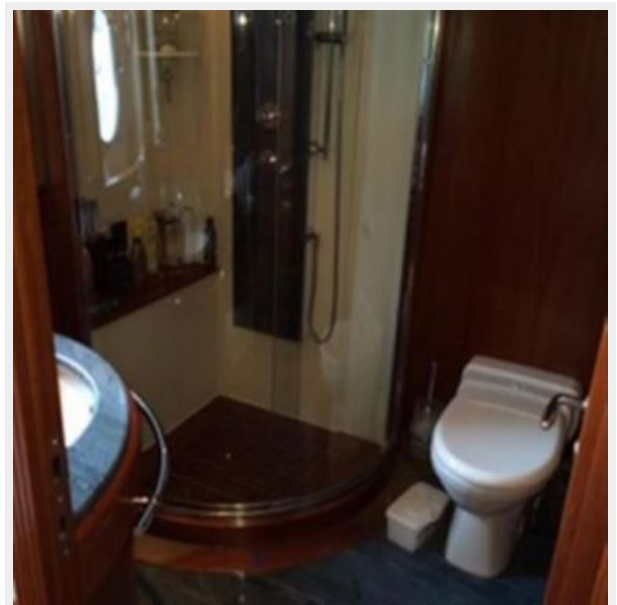
VIP Bed



VIP Bed



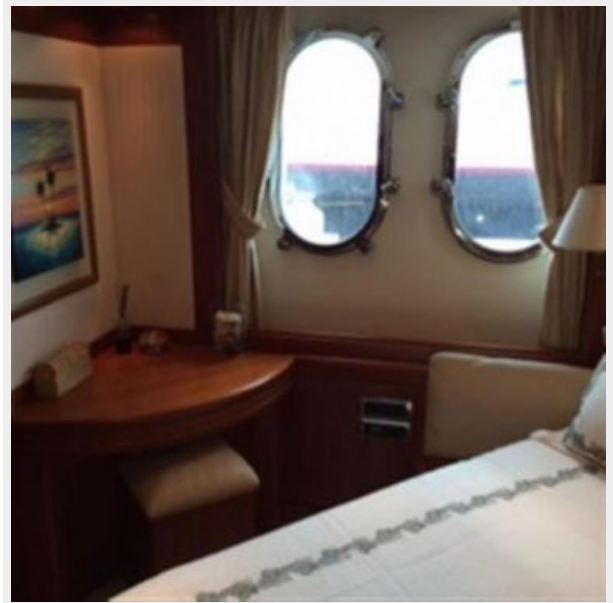
VIP Bath



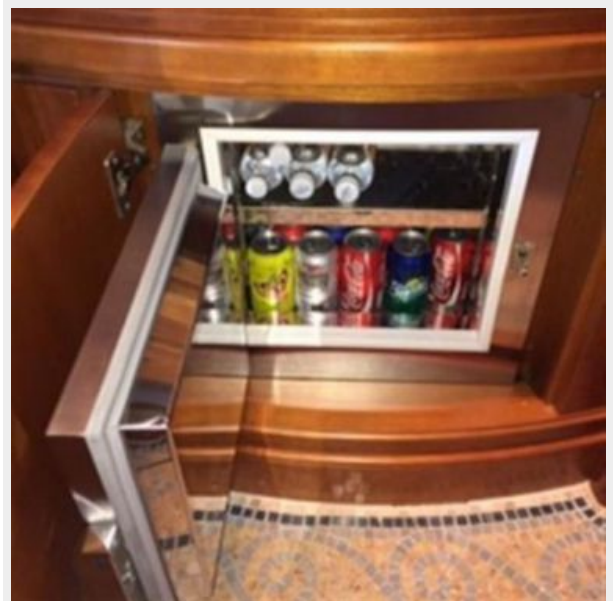
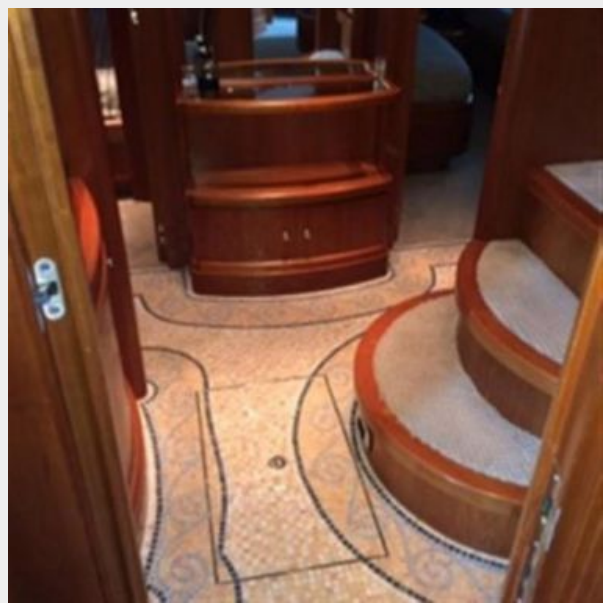
Guest bath



VIP stateroom



Lower deck foyer



Guest cabins



Guest cabins



Guest cabin



Guest cabin



Guest bath



Media room



Companion way view forward



Galley



Galley



Galley



Galley



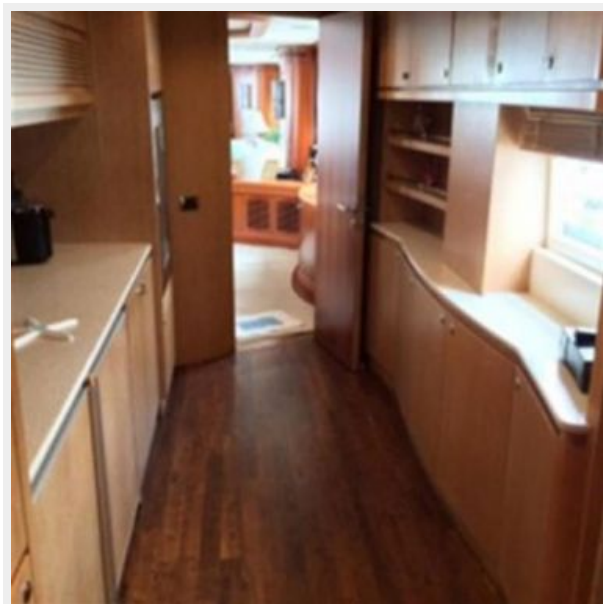
Appliances



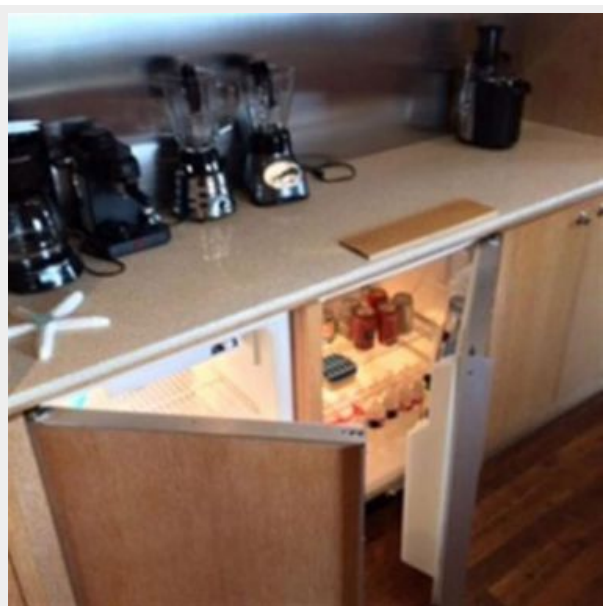
Galley



Galley



Galley



Galley



Pilothouse helm station



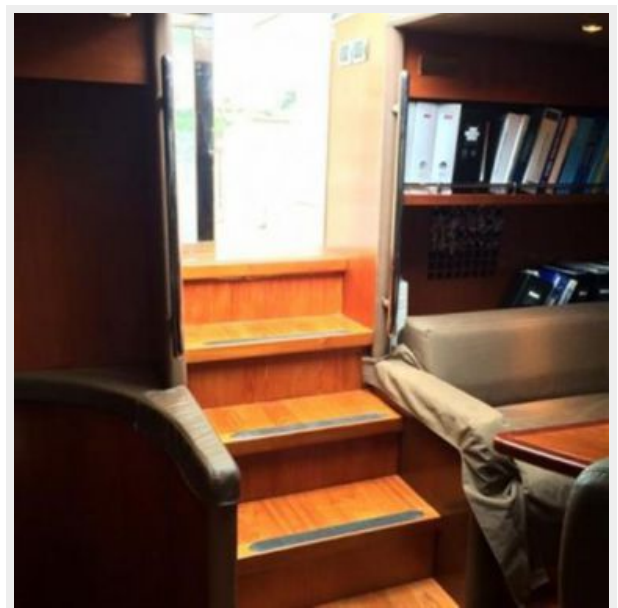
Pilothouse settee



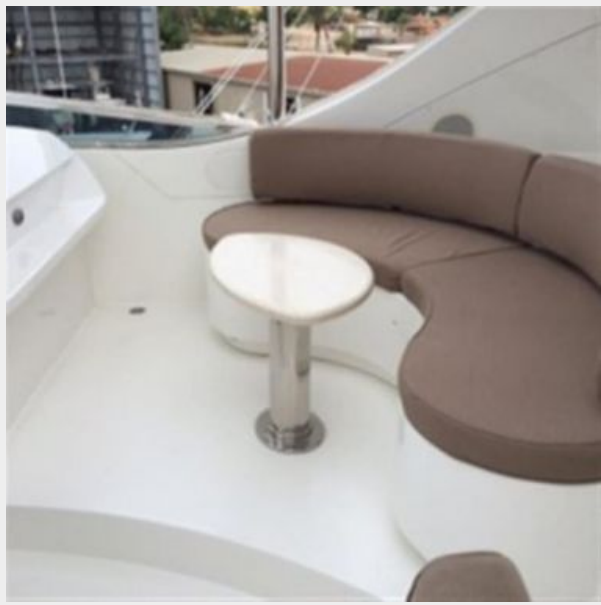
Sliding hatch to Flybridge



Steps up to Flybridge from Pilothouse



Upper deck seating



Bridge Helm station



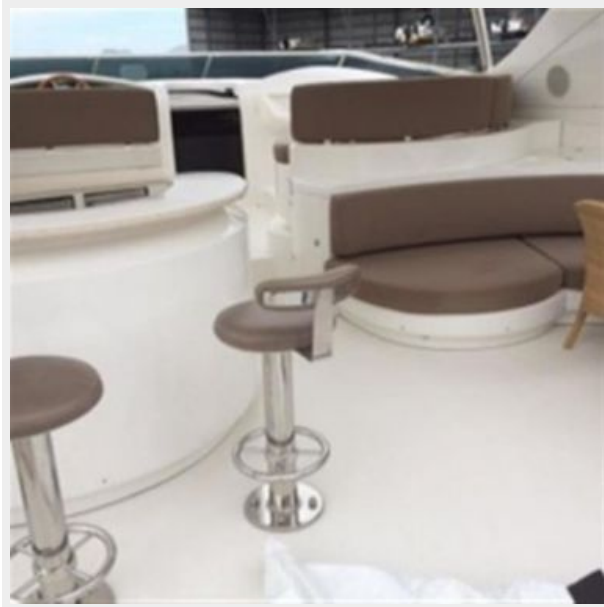
Upper deck appliances



Upper deck seating



Upper deck bar



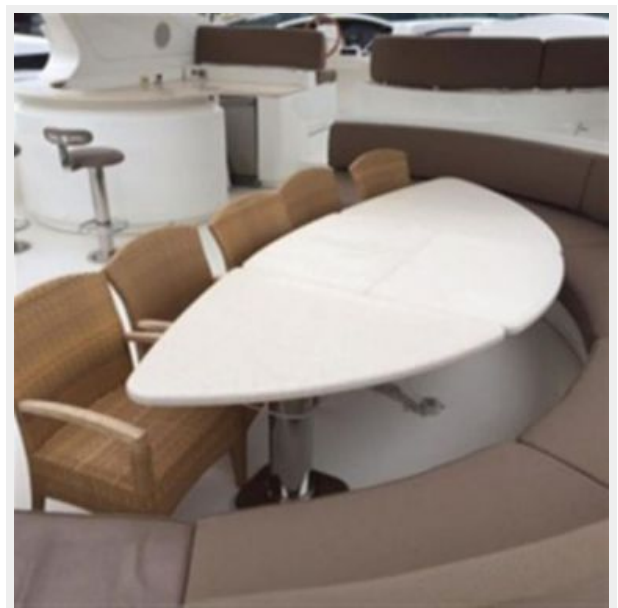
Sun Pads



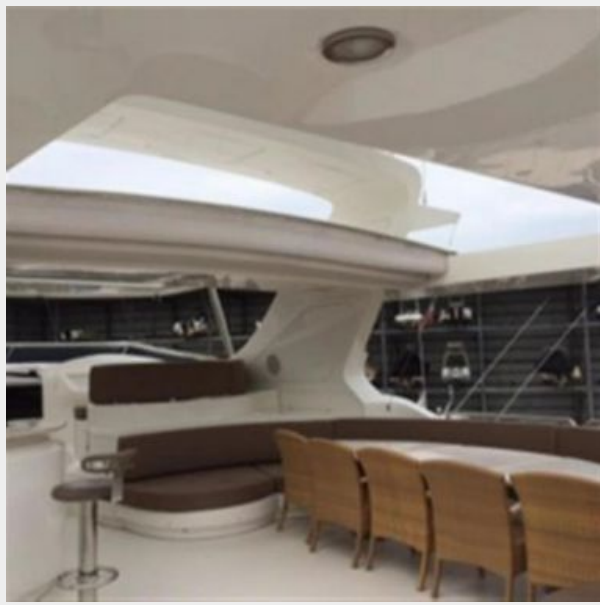
Whirlpool



Upper deck table



Seating



Bridge deck view aft



Side decks



Aft deck entry doors



Aft deck sink



Aft deck table



Aft deck table



Aft deck table & seating



Engine room



Machinery

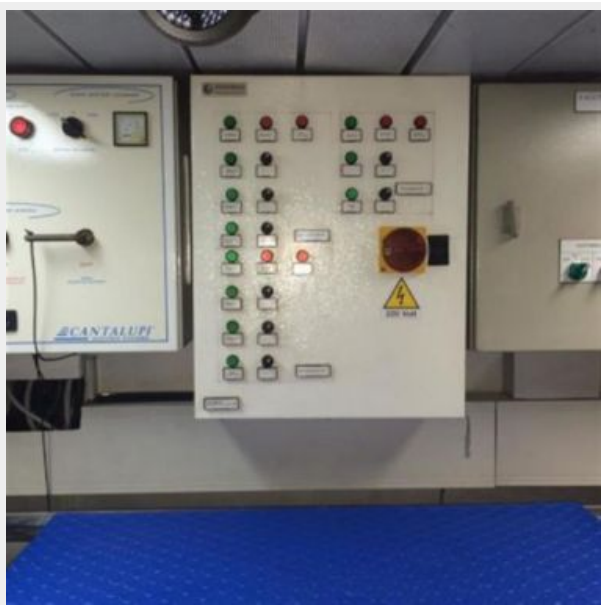


Engine room



Machinery



Machinery**Machinery****Utility room electrical panel****Utility room**

Tender in Garage



Cable master tubs utility room



Tender in the garage



Transom garage door open



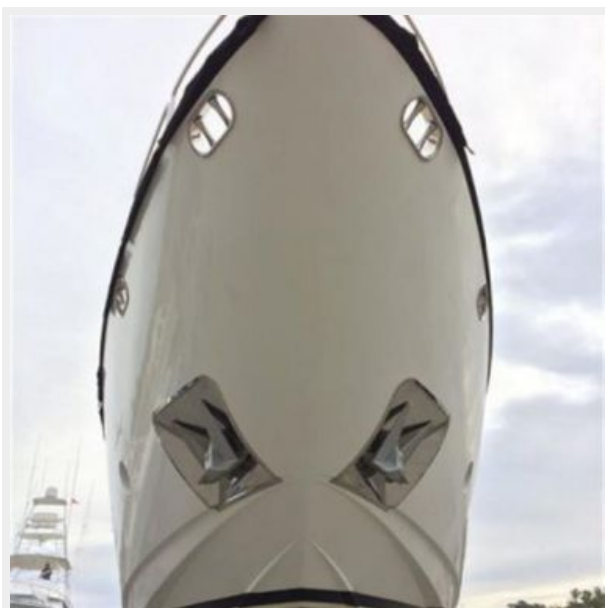
Anchor windlass



Anchor



Bow view



Running gear



Shafts



Water makers



Profile underway



CONTACTS

Andrey Shestakov, leading yacht broker of the sales department of Shestakov Yacht Sales Inc. Shestakov Yacht Sales Inc., the official representative of the Miami/Fort Lauderdale FL headquarters.

Contact details

Email:
andrey@shestakovyachtsales.com

Web: shestakovyachtsales.com/en/

Telephones

USA: **+1(954)274-4435**

Office hours

Monday – Saturday: **9:00 - 21:00 EDT**

Sunday: **closed**

Address



Harbour Towne Marina, 850 NE 3rd St,
STE 213, Dania, FL 33004