

## MARENGO — AZIMUT



**Судостроитель:** [AZIMUT](#)

**Год постройки:** 1999

**Модель:** Моторная яхта

**Цена:** ЦЕНА ЯХТЫ ПО ЗАПРОСУ

**Местонахождение:** United States

**Длина общая:** 70' 0" (21.34m)

**Ширина:** 18' 6" (5.64m)

**Макс. осадка:** 5' 6" (1.68m)

Купить **Marengo — AZIMUT** а также выбрать подходящую вам яхту из нашего каталога яхт вам поможет опытный яхтенный брокер Андрей Шестаков. На сегодняшний день компания **Shestakov Yacht Sales Inc.** имеет большое количество яхт в собственном списке продаж, а также тесно сотрудничает со всеми крупными яхтенными производителями по всему миру.

Для того чтобы купить яхту **Marengo — AZIMUT** а также проконсультироваться по любому вопросу связанному с покупкой, продажей, чартером яхт позвоните по телефону **+7(918)465-66-44**.

# ОГЛАВЛЕНИЕ

---

ОГЛАВЛЕНИЕ	2
ХАРАКТЕРИСТИКИ	4
Обзор	4
Основная информация	4
Размеры	4
Скорость, вместимость и масса	4
Размещение	4
Корпус и палуба	5
Информация о двигателе	5
ПОДРОБНОЕ ОПИСАНИЕ	6
Salon	6
Galley	6
Dinette	6
Master Stateroom	7
Master Head	7
VIP Stateroom	7
VIP Head	8
Guest Stateroom Starboard	8
Guest Stateroom Port	8
Guest Head Port	9
Crew Cabin	9
Electronics Fly Bridge Helm station	9
Aft Deck	9
Deck	10
Flybridge	11
Electronics Lower Helm station	11
Engine Room	11
Исключения	12

---

Отказ от ответственности	12
ФОТОГРАФИИ	13
КОНТАКТЫ	19
Контактная информация	19
Телефоны	19
Время работы	19
Адрес	19

---

# ХАРАКТЕРИСТИКИ

## Обзор

Enter the aft deck from the molded in Swim Platform up two sets of molded in steps brings you to a spacious aft deck with Teak decking. The large overhang provides protection from the elements and a perfect entry to the large salon through Stainless Steel Sliding Doors. In the salon is seating Port and Starboard and beautiful vistas through large side windows. Forward is a Large Flat Screen Samsung TV. Moving forward is the Galley to Starboard and a large Dinette to Port. Port Side is a stairwell to the Bridge. Forward is the stairwell to the forward Guest Suites. A comfortable VIP offers as much room as a Master in most vessels. The VIP has an in suite Head. Portside Aft of the VIP is a Day Head with a Shower Stall. At Midship are two guest suites with bunk beds and two Pullmans for additional sleeping accommodations. Aft down a separate staircase is the full beam Master with a large Master Head.

## Основная информация

Тип судна: Моторная яхта

Модельный год: 1999

Год постройки: 1999

Страна: United States

## Размеры

Длина общая: 70' 0" (21.34m)

Ширина: 18' 6" (5.64m)

Макс. осадка: 5' 6" (1.68m)

## Скорость, вместимость и масса

Водоизмещение: 108000 Pounds

Вместимость воды: 398 Gallons

Объем топливного бака: 1500 Gallons

## Размещение

Всего кают: 4

Всего ком. состава: 4

---

## Корпус и палуба

---

**Материал корпуса:** Fiberglass

---

## Информация о двигателе

---

**Двигатели:** 2

**Производитель:** MTU

**Модель:** 12V183TE93

**Тип двигателя:** Inboard

**Тип топлива:** Diesel

---

# ПОДРОБНОЕ ОПИСАНИЕ

---

## Salon

---

- Port and Starboard Side sofas
- Indirect Accent Lighting
- Shades
- Entertainment Center w/ Sat TV Receiver/Yamaha Cinema receiver RX-V463 / Samsung Flat Screen TV
- Rich High Gloss Cabinetry
- Reading Lamps
- RARITAN Ice Maker
- Aft Bar Unit w/Bottle and Glass Storage
- Overhead Crown Lighting
- Overhead Lighting
- Panoramic View Forward and Port

## Galley

---

- Granite Counter Top
- Sliding panel to Close off the Galley from the Salon
- GE Microwave
- Stainless Steel Refrigerator
- Marble Flooring
- Galley High Gloss Pocket Door
- Abundant Storage
- Stainless Steel Sink
  
- Cherry Wood Cabinets
- Miele 4 Burner Electric Cook Top
- (Miele) Fan over Electric Stove Top
- Bar Height Counter Top
- Side Service Door

## Dinette

---

- Folding Dinette High Gloss Table
- Seating for 8
- Overhead Lighting
- Storage Under Settee
- Large Forward Storage Compartments

- **SMXII Digital control AC**
- **Toshiba TV**
- **Marble Flooring with Accents**

---

## **Master Stateroom**

---

- **Full Beam**
- **King Size Bed**
- **Private Entry Stairwell**
- **Accent Lighting**
- **Book Cases**
- **Entertainment Center**
  
- **Padded head Board**
  
- **Make-up Table and Vanity**
- **Overhead Accent**
- **Port side seating sofa for 2**
- **Samsung Flat Screen TV**
- **Pioneer DVD Player DV-344**
- **SMXII Digital control AC**
- **Carpet flooring**
- **Hanging closet**
- **Private entry to Master Bathroom**

---

## **Master Head**

---

- **Vanity Storage**
- **Marble Flooring**
- **Marble Counter Tops**
- **Shower Stall with Seat**
- **Mirrored Medicine Cabinet**
- **Privacy Door**
- **Overhead Lighting**
- **Double Sinks w/ Marble Counter Top**
- **Vacu Flush Toilet**
- **Towel Bars and Ring**
- **Glass Holder**

---

## **VIP Stateroom**

---

- **Queen Size Centerline Berth with Storage**

- **Port side seating sofa for 2**
- **2 Nightstands**
- **2 Closets**
- **Overhead Lighting**
- **Indirect Lighting**
- **Floor Lighting**
- **TV**
- **Stereo Speakers**
- **Mirrored Headboard w/**
- **In suite Full Head w/Shower Stall**

---

## **VIP Head**

---

- **Vanity Storage**
- **Marble Flooring**
- **Marble Counter Tops**
- **Shower Stall**
- **Mirrored Medicine Cabinet**
- **Privacy Door**
- **Overhead Lighting**
- **Sinks w/ Marble Counter Top**
- **Vacuum Flush Toilet**
- **Glass Holder**

---

## **Guest Stateroom Starboard**

---

- **Night Stand w/lamp and Storage Drawer**
- **Flat Screen TV**
- **Portlight w/Roman Shade**
- **Mirrored Headboard**
- **In suite Guest Head w/Shower Stall**
- **High Gloss Privacy Door**
- **Marble Flooring**
- **Granite Countertop w/Sink**
- **Vanity w/ Storage**
- **Interphone System**
- **Dryer Storage Compartment w/Rolltop**

---

## **Guest Stateroom Port**

---

- **2 Side-by-side Berths plus one Upper Bunk**



- TV
- Privacy Door to Guest Head
- Hang-up Locker
- Mirrored Head Boards
- Night Stand w/Storage Drawer and Lamp
- Overhead Lighting
- Accent Lighting
- Sony Stereo system

---

## Guest Head Port

---

- Vanity Storage
- Marble Flooring
- Marble Counter Tops
- Shower Stall
- Mirrored Medicine Cabinet
- Privacy Door
- Overhead Lighting
- Sinks w/ Marble Counter Top
- Vacuum Flush Toilet
- Glass Holder

---

## Crew Cabin

---

- Head

---

## Electronics Fly Bridge Helm station

---

- Garmin 5212 Plotters w/GPS
- Simrad AP28 Auto Pilot
- ICOM VHF IC-M412
- Vetus Bow-Thruster
- Raytheon ST 60 TriData
- Raytheon ST60 Rudder
- Raytheon ST 60 Wind indicator
- MTU gauge RPM Display
- Trim tabs control and display
- Compass

---

## Aft Deck

---

- (2) Stainless steel framed sliding glass doors to Salon
- Storage locker inside aft deck bench seat
- Refrigerated top-load boxes port & starboard on aft deck
- Aft cockpit sofa
- Hull side boarding ladder
- Transom door to access to swim platform on Port & Starboard side
- Port & starboard Lofrans warping winches
- Custom dining teak table on two stainless steel bases
- Teak over fiberglass Aft Deck
- Video camera
- Overhead speakers
- Overhead Lights
- Hydraulic garage for PWC
- Underwater lights
- Hydraulic swim ladder
- Hot and cold water hand shower
- Electric port and starboard 50 amp shore power chords

## Deck

---

- Helm bench seat with storage
- Wet bar with BBQ grill
- Molded fiberglass radar arch on aft end of bridge deck with port & starboard side navigation lights, KVH SAT TV, GPS antennas.
- New Bimini top
- Cushions Settee and sun pad with teak table on two stainless steel bases
- Davit
- 2007 Avon 13.4' Tender with 2011 Yamaha 40 HP outboard with 40 hours.
- Navy-Type Anchor
- Approximately 300 feet of G3 ½ BBB type anchor chain in locker
- 2 units LoFrans aft cockpit- port & starboard
- LoFrans windlass on forward deck ( Model Project X4, 24V DC )
- Molded fiberglass composites structure with teak overlay on main decks
- Stainless steel hand rails on molded bulwarks, 2 port, 2 starboard & 2 transom gates
- Stainless steel cleats on foredeck and aft deck with hawse pipes
- Access deck hatch to crew's quarters on fore cabin trunk
- Port & starboard gear lockers in foredeck trunks
- 3 windshield wipers with washer on center windshield
- Molded fiberglass super structure with fixed side windows
- Engine room vents port & starboard in underside of bridge deck overhang

---

## Flybridge

---

- Starboard Side Helm Station
- Double Helm Seat
- Port Side Electric Grill
- Fridge
- Glass & Stainless Hatch to Salon
- Fiberglass Arch w/down lights
- Bow Thruster Control
- Bridge Cushions
- Bimini Top
- Stereo Speakers
- Tender & Davit
- Teak Table w/Seating
- Storage under Seating
- Sun Lounge
- Wood Helm Wheel
- Electronic Controls

---

## Electronics Lower Helm station

---

- Garmin 5212 Plotters w/GPS/
- Garmin 4208
- Simrad AP28 Auto Pilot
- ICOM VHF IC-M412
- Vetus Bow-Thruster
- Raytheon ST 60 TriData
- Raytheon ST60 Rudder
- Raytheon ST 60 Wind indicator
- MTU gauge RPM Display
- Trim tabs control and display
- Stabilizer control
- Compass
- Controls for windshield wipers, windlass, anchor chain washer etc.
- Intercom

---

## Engine Room

---

- Twin MTU V-12 Turbo charger
- ZF Transmissions Model BW 165 V. Ratio 1.971:1
- (2) Two Kohler Generator 21 KW
- (2) Two Aluminum 1190 Gals

- **Oil transfer system**
- **Micro commander electronic remote control**
- **Engines mounts and beds**
- **Engine room insulation**
- **Naiad Roll Stabilizer**
- **Three (3) main breakers , located forward on the engine room**
- **NewMar/Phase Three Battery Charger model PT 24-95U**
- **ProMariner battery charger Model ProNautic 12-30P**
- **Heart Interface Inverter**
- **Engine Room Lighting DC and AC**
- **Engine Room Access Ladder**
- **Bilge Pumps**
- **Blower System**
- **High Water Alarm**
- **Racor Fuel Filters**
- **Camera**

---

## **Исключения**

При продаже яхты исключаются личные вещи владельца.

---

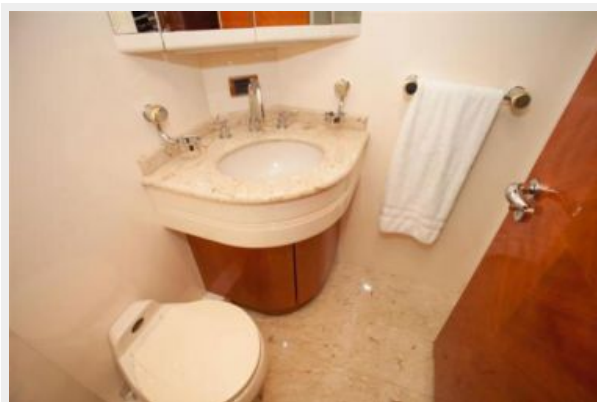
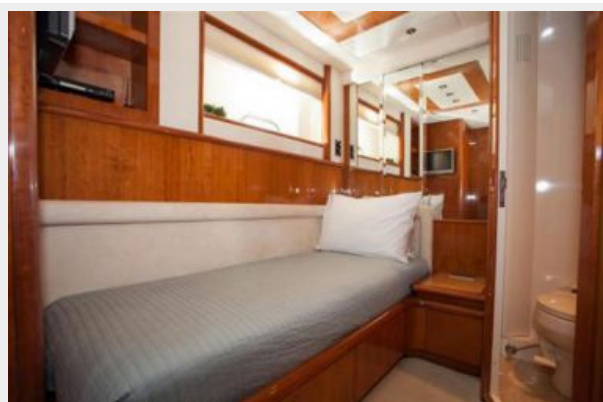
## **Отказ от ответственности**

Компания предоставляет описание судна или яхты добросовестно, но не может гарантировать точность этой информации, а также не ручается за техническое состояние. Покупатель должен проинструктировать своих агентов или оценщиков исследовать представленную информацию более подробно, по собственному желанию. Продажа судна или яхты, изменение цены или снятие с продажи будет происходить без предварительного уведомления.

# ФОТОГРАФИИ















# КОНТАКТЫ

---

Андрей Шестаков (Andrey Shestakov) – ведущий яхтенный брокер отдела продаж яхт и судов компании Shestakov Yacht Sales Inc. Официальный представитель Shestakov Yacht Sales Inc. для русскоговорящих клиентов в центральном офисе компании в Майами/Форт Лодердейл/Флорида/США.

## Контактная информация

---

Email: [andrey@shestakovyachtsales.com](mailto:andrey@shestakovyachtsales.com)

Web: [shestakovyachtsales.com](http://shestakovyachtsales.com)

## Телефоны

---

Краснодарский край: **+7(918)465-66-44**

США, Майами, Флорида: **+1(954)274-4435**

## Время работы

---

Понедельник – Суббота: **9:00 - 21:00**  
EDT

Воскресенье: **Закрето**

## Адрес

---



Harbour Towne Marina, 850 NE 3rd St,  
STE 213, Dania, FL 33004