

## DEEP DOWNES — CARVER



**Builder:** CARVER

**Year Built:** 2003

**Model:** Motor Yacht

**Price:** PRICE ON APPLICATION

**Location:** United States

**LOA:** 44' 0" (13.41m)

**Beam:** 13' 11" (4.24m)

**Min Draft:** 3' 6" (1.07m)

**Max Draft:** 3' 6" (1.07m)

Our experienced yacht broker, Andrey Shestakov, will help you choose and buy a yacht that best suits your needs **Deep Downes — CARVER** from our catalogue. Presently, at Shestakov Yacht Sales Inc., we have a wide variety of yachts available on our sale's list. We also work in close contact with all the big yacht manufacturers from all over the world.

If you would like to buy a yacht **Deep Downes — CARVER** or would like help answering any questions concerning purchasing, selling or chartering a yacht, please call **+1(954)274-4435**

---

# TABLE OF CONTENTS

---

TABLE OF CONTENTS	2
SPECIFICATIONS	5
Overview	5
Basic Information	5
Dimensions	6
Speed, Capacities and Weight	6
Accommodations	6
Hull and Deck Information	6
Engine Information	6
DETAILED INFORMATION	7
Vessel Walkthrough	7
Salon	7
Galley	8
Master Stateroom	8
Master Head	9
Guest Stateroom	9
Guest Head	9
Engine Room and Mechanical	10
Aft Deck	10
Bridge	10
Cockpit	11
Deck and Hull	12
Disclaimer	12
Exclusions	13
Disclaimer	13
PHOTOS	14
Salon	14
Galley	14

Master Berth	14
Helm	14
Salon Port Sofa	14
Sofa Storage	14
Salon Entertainment	15
Opening Salon Window	15
Master Stateroom	15
Galley	15
Master Stateroom	16
Master Stateroom	16
Master Stateroom	16
Master Stateroom	16
Master Stateroom	17
Master Stateroom	17
Master Head	17
Master Head	17
Forward Stateroom	18
Forward Berth	18
Forward Head	18
Forward Shower	18
Electrical Panel	19
Helm	19
Helm	19
New Helm Seat	19
Bridge	19
Bridge Seating	19
Companion Seating	20
Bridge Wet Bar & Ice maker	20
Aft Deck	20

---

Aft Deck	20
Chain Locker	20
Cockpit Storage	20
Cockpit	21
Cockpit	21
Ground Tackle	21
Davit	21
Side Deck	22
Life Raft	22
Generator	22
Engine Room	22
Engine Room	22
Engine Room	22
Engine Room	23
Engine Room	23
Profile	23
<b>CONTACTS</b>	<b>24</b>
Contact details	24
Telephones	24
Office hours	24
Address	24

---

# SPECIFICATIONS

---

## Overview

---

This beautiful spacious one owner 444 Carver Cockpit Motor Yacht shows much newer than its age. Deep Downes has only 420 original hours on her 370hp Volvo **D6 Common Rail Diesels (NEW in 2009)**, which provide superior performance over the original engines. **This vessel has many updates (these are showing as NEW throughout the detailed specifications) and ongoing maintenance** that should provide the next owner many hours of trouble free boating. Her exterior shines and the engine room is well kept and serviced. Check out the specs and pictures and don't delay setting up your appointment!

Volvo D6 Common Rail Diesels (NEW 2009-420 hours) with up-to-date service

Updated Electronic Controls

Garmin Touch Screen GPS/Plotter (NEW 2009)

Radar and Autopilot (NEW 2009)

VHF Radio (NEW 2011)

Bow Thruster (NEW 2015)

Bridge and Aft Deck Enclosure (NEW Sept 2016)

Bridge Bimini (NEW 2014)

St Croix Davit System (NEW 2010)

Flat Screen TVs with Blu Ray Players (NEW 2012)

AND MUCH MORE

---

## Basic Information

---

**Category:** Motor Yacht

**Sub Category:** Aft Cabin

**Model Year:** 2003

**Year Built:** 2003

**Country:** United States

**Fly Bridge:** Yes

---

## Dimensions

---

**LOA:** 44' 0" (13.41m)

**Beam:** 13' 11" (4.24m)

**Min Draft:** 3' 6" (1.07m)

**Max Draft:** 3' 6" (1.07m)

---

## Speed, Capacities and Weight

---

**Displacement:** 33860 Pounds

**Water Capacity:** 90 Gallons

**Holding Tank:** 72 Gallons

**Fuel Capacity:** 404 Gallons

---

## Accommodations

---

**Total Cabins:** 2

**Total Berths:** 2

**Sleeps:** 4

**Total Heads:** 2

---

## Hull and Deck Information

---

**Hull Material:** Fiberglass

**Hull Configuration:** Modified Deep Vee

**Hull Color:** White

---

## Engine Information

---

**Engines:** 2

**Manufacturer:** Volvo

**Model:** D6

**Engine Type:** Inboard

**Fuel Type:** Diesel

---

# DETAILED INFORMATION

---

## Vessel Walkthrough

---

Carver's signature raised deck design allows for a wider, much roomier cabin than other yachts this size. Combined with the way Carver united the salon and galley into one spacious and elegant "great room", this adds up to outstanding cruising comfort. The expansive great room features all sorts of amenities, including beautiful cherry woodwork, expansive comfortable seating, and updated entertainment systems. When it comes to sleeping accommodations, owners will welcome the unexpected luxury of two private staterooms, each with custom mattresses and a private head compartment. The master stateroom is aft, separated from the guest stateroom by the main cabin, providing privacy for both owner and guests. On the bridge, passengers can relax with the L-shaped lounge that seats five and the wet bar that includes an icemaker. The aft deck offers a hardtop that covers the entire deck plus new enclosure with screens, plus the convenience of an integral bridge stairway and wing doors to the foredecks. The large cockpit offers plenty of space to facilitate water activities plus access from the master stateroom to enjoy a sunrise or sunset. **The owner has continuously updated and replaced items as needed.**

## Salon

---

Translucent Curved Acrylic Sliding Door w/Lock and Interior Screen

Flat Screen TV with Blu Ray Player (NEW 2012)

AM/FM/CD Stereo, Satellite Radio System, Stereo Speakers

Flexsteel Lounge w/ Double Incliners, Corner Extension w/Storage Below

Flexsteel Sofa w/ Storage Beneath

Coffee Table

Recessed Overhead Lighting

Numerous Storage Cabinets

Window Vents

Window Blinds and Curtains

Carpet (NEW 2012)

Air Conditioning, Reverse Cycle (NEW 2013)

Electrical Panel with Water Level Monitor

---

Central Vacuum System

Engine Room Access

## **Galley**

---

Stainless Steel Refrigerator/Freezer (NEW 2015)

Microwave Convection Oven, Built-in

3-Burner Electric Smooth Top Range

Stainless Steel Undermounted Sink, New Faucet

Coffee Maker, Built-in

Solid Surface Countertops

Flooring, Granite (NEW 2012)

Storage Cabinets & Drawers

Dockside Water and Pressure System

Remote VHF Control with Speaker

## **Master Stateroom**

---

Queen Berth w/ Custom Handicraft Mattress (NEW 2011)

Night Stands (2) with Cabinets

Two Cedar Lined Hanging Lockers

Storage Cabinets and Drawers

Access to Cockpit via Sliding Glass Door w/ Screen and Curtain

Recessed Halogen Reading Lights and Overhead Lights

Portlights (2) with Blinds

Flat Screen TV with Blu Ray Player (NEW 2012)

Air Conditioning, Reverse Cycle (NEW 2013)

Life Raft, Six Person with Current Certification



Ensuite Head

## Master Head

---

Solid Surface Vanity

Undermounted SS Sink w/Storage Below

VacuFlush Toilet

Separate Shower Stall with Seat

Mirrored Medicine Cabinet

Portlights, 2 Opening with Privacy Screen

Holding Tank Monitor

## Guest Stateroom

---

Double Berth w/Custom Handicraft Mattress (NEW 2011)

Cedar Lined Hanging Locker

Overhead Hatch

Storage Cabinets & Drawers

Flat Screen TV with Blu Ray Player (NEW 2012)

Ensuite Head

## Guest Head

---

The guest accommodations features a shower compartment separate from the head/vanity, with the shower to port and the head/vanity to starboard.

Separate Shower Compartment with Seat, Portlight and Mirrored Storage Cabinet

Vacuflush Head, Stall, Solid Surface Vanity, Undermounted SS Sink w/Storage Below, Mirrored Medicine Cabinet

---

## Engine Room and Mechanical

---

This Carver boasts **Twin Volvo Common Rail D6 Engines (NEW 2009) with only 420 hours** and current engine service. These engines provide superior performance (both economy and speed) versus the original engines and don't leave soot on the transom.

Electronic Controls (NEW 2009)

Onan 11.5 KW Generator with Sound Shield (1095 hours)

Engine Oil Change System

Batteries (NEW 2016)

Reverse Cycle Heat/Air

Automatic Fire Suppression System

Water Heater

---

## Aft Deck

---

Deck, Self Draining

Acrylic Wing Doors to Side Decks

Command Bridge Stairway w/Stainless Steel Handrail

Electronics Arch

Factory Hard-Top

Black Sunbrella Canvas/Eisenglass Enclosure (NEW Sept 2016)

Rattan Chairs with Cushions (2)

Wood Table

Flat Screen TV

Storage Cabinets

LED Courtesy and Overhead Lighting

Stereo Speakers

---

## Bridge

---

Bimini Top (NEW 2014)

Full Canvas/Eisenglass Enclosure (NEW Sept 2016)

Adjustable Pedestal Helm Seat (NEW 2013) w/Cover

Companion Seating at Helm w/Cover

Fiberglass Dash with Full Instrumentation w/Cover

Stainless Steel Grab Rails on Either End of Helm

Tilt Steering Wheel

Wraparound Windshield, Aluminum Frame

AM/FM/CD Stereo

L-Shaped Lounge w/Cover and Storage Beneath

Wet Bar w/Sink and New Faucet, Prep Surface

Ice Maker

Storage Locker

LED Courtesy Lighting

Carpet, Removable

---

## Cockpit

---

There is boarding Access from port or starboard or via the transom door. There is also direct access to the master stateroom via a sliding door.

Integral Steps from Cockpit to Aft Deck w/Stainless Steel Handrail

Sliding Door Access to Master Stateroom

LED Courtesy Lighting

Storage Locker

Storage Hatch in Deck, Provides Access to Aft Bilge

Stainless Steel Rail with 4 Rocket Launchers

Transom Door

Hot and Cold Shower

Stainless Steel Hand Rail Across Entire Transom

## Deck and Hull

---

Bottom was painted in 2015. At that time, the props were balanced and conditioned and thru hulls replaced if needed.

Windlass, Electric with Foot Pads and Remote Control

Anchor with All Chain Rode

Fore Deck Locker, Self Draining, for Anchor Chain and Washdown

Foredeck Fender Holders

Foredeck Sunpads

Windshield Screen

Non-Skid Side Decks

Life Ring

Stainless Steel Rails

Stainless Steel Grab Rail Over Cabin Windows, Running Length of Cabin

Two Boarding Doors (Port & Starboard)

Swim Platform w/Boarding Ladder (Conceals in Boarding Platform)

Dock Box on Swim Platform

Life Raft (Recertified Sept 2016)

St Croix Davits (NEW 2010)

## Disclaimer

---

The Company offers the details of this vessel in good faith but cannot guarantee or warrant the accuracy of this information nor warrant the condition of the vessel. A buyer should instruct his agents, or his surveyors, to investigate such details as the buyer desires validated. This vessel is offered subject to prior sale, price change, or withdrawal without notice.

## Exclusions

---

Owner's personal belongings.

## Disclaimer

---

The Company offers the details of this vessel or yacht in good faith but cannot guarantee or warrant the accuracy of this information nor warrant the condition of the vessel. A buyer should instruct his representatives, agents, or his surveyors, to investigate such details as the buyer desires validated. This vessel or yacht is offered subject to prior sale, price change, or withdrawal without notice.

# PHOTOS

**Salon**



**Galley**



**Master Berth**



**Helm**



**Salon Port Sofa**



**Sofa Storage**



### Salon Entertainment



### Opening Salon Window



### Master Stateroom



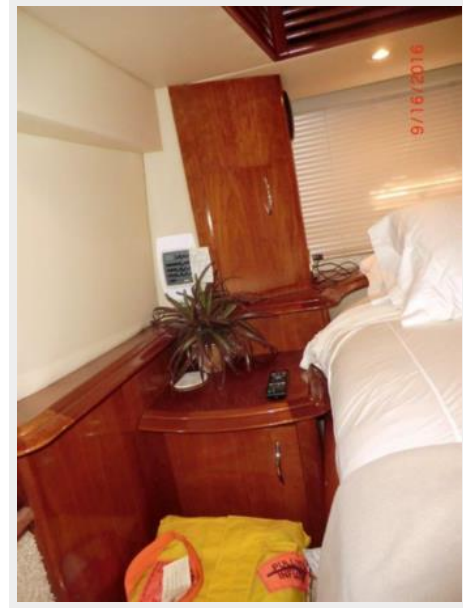
### Galley





**Master Stateroom**

**Master Stateroom**



**Master Stateroom**



**Master Stateroom**





**Master Stateroom**



**Master Stateroom**



**Master Head**



**Master Head**



**Forward Berth**



**Forward Stateroom**



**Forward Head**



**Forward Shower**



**Electrical Panel**



**Helm**



**Helm**



**New Helm Seat**



**Bridge**



**Bridge Seating**





**Companion Seating**



**Bridge Wet Bar & Icemaker**



**Aft Deck**



**Aft Deck**



**Chain Locker**



**Cockpit Storage**



Cockpit



Cockpit



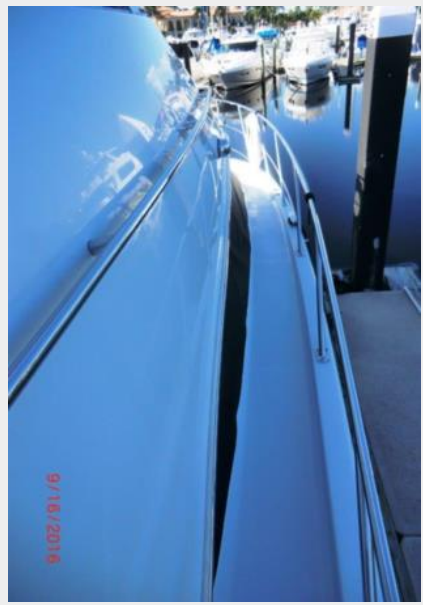
Ground Tackle

Davit





Side Deck



Life Raft



Generator



Engine Room



Engine Room



Engine Room



**Engine Room**



**Engine Room**



**Profile**



---

# CONTACTS

---

Andrey Shestakov, leading yacht broker of the sales department of Shestakov Yacht Sales Inc. Shestakov Yacht Sales Inc., the official representative of the Miami/Fort Lauderdale FL headquarters.

---

## Contact details

---

Email: [andrey@shestakovyachtsales.com](mailto:andrey@shestakovyachtsales.com)

Web: [shestakovyachtsales.com/en/](http://shestakovyachtsales.com/en/)

---

## Telephones

---

USA: +1(954)274-4435

---

## Office hours

---

Monday – Saturday: **9:00 - 21:00** EDT

Sunday: **closed**

---

## Address

---



Harbour Towne Marina, 850 NE 3rd St,  
STE 213, Dania, FL 33004