

## DEEP DOWNES — CARVER



**Судостроитель:** CARVER

**Год постройки:** 2003

**Модель:** Моторная яхта

**Цена:** **ЦЕНА ЯХТЫ ПО ЗАПРОСУ**

**Местонахождение:** United States

**Длина общая:** 44' 0" (13.41m)

**Ширина:** 13' 11" (4.24m)

**Мин. осадка:** 3' 6" (1.07m)

**Макс. осадка:** 3' 6" (1.07m)

Купить Deep Downes — CARVER а также выбрать подходящую вам яхту из нашего каталога яхт вам поможет опытный яхтенный брокер Андрей Шестаков. На сегодняшний день компания Shestakov Yacht Sales Inc. имеет большое количество яхт в собственном списке продаж, а также тесно сотрудничает со всеми крупными яхтенными производителями по всему миру.

Для того чтобы купить яхту Deep Downes — CARVER а также проконсультироваться по любому вопросу связанному с покупкой, продажей, чартером яхт позвоните по телефону **+7(918)465-66-44**.

# ОГЛАВЛЕНИЕ

ОГЛАВЛЕНИЕ	2
ХАРАКТЕРИСТИКИ	5
Обзор	5
Основная информация	5
Размеры	6
Скорость, вместимость и масса	6
Размещение	6
Корпус и палуба	6
Информация о двигателе	6
ПОДРОБНОЕ ОПИСАНИЕ	7
Vessel Walkthrough	7
Salon	7
Galley	8
Master Stateroom	8
Master Head	9
Guest Stateroom	9
Guest Head	9
Engine Room and Mechanical	10
Aft Deck	10
Bridge	10
Cockpit	11
Deck and Hull	12
Disclaimer	12
Исключения	13
Отказ от ответственности	13
ФОТОГРАФИИ	14
Salon	14
Galley	14

Master Berth	14
Helm	14
Salon Port Sofa	14
Sofa Storage	14
Salon Entertainment	15
Opening Salon Window	15
Master Stateroom	15
Galley	15
Master Stateroom	16
Master Stateroom	16
Master Stateroom	16
Master Stateroom	16
Master Stateroom	17
Master Stateroom	17
Master Head	17
Master Head	17
Forward Stateroom	18
Forward Berth	18
Forward Head	18
Forward Shower	18
Electrical Panel	19
Helm	19
Helm	19
New Helm Seat	19
Bridge	19
Bridge Seating	19
Companion Seating	20
Bridge Wet Bar & Ice maker	20
Aft Deck	20

---

Aft Deck	20
Chain Locker	20
Cockpit Storage	20
Cockpit	21
Cockpit	21
Ground Tackle	21
Davit	21
Side Deck	22
Life Raft	22
Generator	22
Engine Room	22
Engine Room	22
Engine Room	22
Engine Room	23
Engine Room	23
Profile	23
<b>КОНТАКТЫ</b>	<b>24</b>
Контактная информация	24
Телефоны	24
Время работы	24
Адрес	24

---

# ХАРАКТЕРИСТИКИ

---

## Обзор

---

This beautiful spacious one owner 444 Carver Cockpit Motor Yacht shows much newer than its age. Deep Downes has only 420 original hours on her 370hp Volvo **D6 Common Rail Diesels (NEW in 2009)**, which provide superior performance over the original engines. **This vessel has many updates (these are showing as NEW throughout the detailed specifications) and ongoing maintenance** that should provide the next owner many hours of trouble free boating. Her exterior shines and the engine room is well kept and serviced. Check out the specs and pictures and don't delay setting up your appointment!

Volvo D6 Common Rail Diesels (NEW 2009-420 hours) with up-to-date service

Updated Electronic Controls

Garmin Touch Screen GPS/Plotter (NEW 2009)

Radar and Autopilot (NEW 2009)

VHF Radio (NEW 2011)

Bow Thruster (NEW 2015)

Bridge and Aft Deck Enclosure (NEW Sept 2016)

Bridge Bimini (NEW 2014)

St Croix Davit System (NEW 2010)

Flat Screen TVs with Blu Ray Players (NEW 2012)

AND MUCH MORE

---

## Основная информация

---

**Тип судна:** Моторная яхта

**Подкатегория:** Aft Cabin

**Модельный год:** 2003

**Год постройки:** 2003

**Страна:** United States

**Открытая палуба мостика:** Да

## Размеры

---

**Длина общая:** 44' 0" (13.41m)

**Ширина:** 13' 11" (4.24m)

**Мин. осадка:** 3' 6" (1.07m)

**Макс. осадка:** 3' 6" (1.07m)

## Скорость, вместимость и масса

---

**Водоизмещение:** 33860 Pounds

**Вместимость воды:** 90 Gallons

**Вместимость сточного бака:** 72 Gallons

**Объем топливного бака:** 404 Gallons

## Размещение

---

**Всего кают:** 2

**Всего коек:** 2

**Спальные места:** 4

**Всего ком. состава:** 2

## Корпус и палуба

---

**Материал корпуса:** Fiberglass

**Комплектация корпуса:** Modified Deep Vee

**Цвет корпуса:** White

## Информация о двигателе

---

**Двигатели:** 2

**Производитель:** Volvo

**Модель:** D6

**Тип двигателя:** Inboard

**Тип топлива:** Diesel

---

# ПОДРОБНОЕ ОПИСАНИЕ

---

## Vessel Walkthrough

---

Carver's signature raised deck design allows for a wider, much roomier cabin than other yachts this size. Combined with the way Carver united the salon and galley into one spacious and elegant "great room", this adds up to outstanding cruising comfort. The expansive great room features all sorts of amenities, including beautiful cherry woodwork, expansive comfortable seating, and updated entertainment systems. When it comes to sleeping accommodations, owners will welcome the unexpected luxury of two private staterooms, each with custom mattresses and a private head compartment. The master stateroom is aft, separated from the guest stateroom by the main cabin, providing privacy for both owner and guests. On the bridge, passengers can relax with the L-shaped lounge that seats five and the wet bar that includes an icemaker. The aft deck offers a hardtop that covers the entire deck plus new enclosure with screens, plus the convenience of an integral bridge stairway and wing doors to the foredecks. The large cockpit offers plenty of space to facilitate water activities plus access from the master stateroom to enjoy a sunrise or sunset. **The owner has continuously updated and replaced items as needed.**

## Salon

---

Translucent Curved Acrylic Sliding Door w/Lock and Interior Screen

Flat Screen TV with Blu Ray Player (NEW 2012)

AM/FM/CD Stereo, Satellite Radio System, Stereo Speakers

Flexsteel Lounge w/ Double Incliners, Corner Extension w/Storage Below

Flexsteel Sofa w/ Storage Beneath

Coffee Table

Recessed Overhead Lighting

Numerous Storage Cabinets

Window Vents

Window Blinds and Curtains

Carpet (NEW 2012)

Air Conditioning, Reverse Cycle (NEW 2013)

Electrical Panel with Water Level Monitor

Central Vacuum System

Engine Room Access

---

## Galley

---

Stainless Steel Refrigerator/Freezer (NEW 2015)

Microwave Convection Oven, Built-in

3-Burner Electric Smooth Top Range

Stainless Steel Undermounted Sink, New Faucet

Coffee Maker, Built-in

Solid Surface Countertops

Flooring, Granite (NEW 2012)

Storage Cabinets & Drawers

Dockside Water and Pressure System

Remote VHF Control with Speaker

---

## Master Stateroom

---

Queen Berth w/ Custom Handicraft Mattress (NEW 2011)

Night Stands (2) with Cabinets

Two Cedar Lined Hanging Lockers

Storage Cabinets and Drawers

Access to Cockpit via Sliding Glass Door w/ Screen and Curtain

Recessed Halogen Reading Lights and Overhead Lights

Portlights (2) with Blinds

Flat Screen TV with Blu Ray Player (NEW 2012)

Air Conditioning, Reverse Cycle (NEW 2013)

Life Raft, Six Person with Current Certification



Ensuite Head

## Master Head

---

Solid Surface Vanity

Undermounted SS Sink w/Storage Below

VacuFlush Toilet

Separate Shower Stall with Seat

Mirrored Medicine Cabinet

Portlights, 2 Opening with Privacy Screen

Holding Tank Monitor

## Guest Stateroom

---

Double Berth w/Custom Handicraft Mattress (NEW 2011)

Cedar Lined Hanging Locker

Overhead Hatch

Storage Cabinets & Drawers

Flat Screen TV with Blu Ray Player (NEW 2012)

Ensuite Head

## Guest Head

---

The guest accommodations features a shower compartment separate from the head/vanity, with the shower to port and the head/vanity to starboard.

Separate Shower Compartment with Seat, Portlight and Mirrored Storage Cabinet

Vacuflush Head, Stall, Solid Surface Vanity, Undermounted SS Sink w/Storage Below, Mirrored Medicine Cabinet

---

## Engine Room and Mechanical

---

This Carver boasts **Twin Volvo Common Rail D6 Engines (NEW 2009) with only 420 hours** and current engine service. These engines provide superior performance (both economy and speed) versus the original engines and don't leave soot on the transom.

Electronic Controls (NEW 2009)

Onan 11.5 KW Generator with Sound Shield (1095 hours)

Engine Oil Change System

Batteries (NEW 2016)

Reverse Cycle Heat/Air

Automatic Fire Suppression System

Water Heater

---

## Aft Deck

---

Deck, Self Draining

Acrylic Wing Doors to Side Decks

Command Bridge Stairway w/Stainless Steel Handrail

Electronics Arch

Factory Hard-Top

Black Sunbrella Canvas/Eisenglass Enclosure (NEW Sept 2016)

Rattan Chairs with Cushions (2)

Wood Table

Flat Screen TV

Storage Cabinets

LED Courtesy and Overhead Lighting

Stereo Speakers

---

## Bridge

---

Bimini Top (NEW 2014)

Full Canvas/Eisenglass Enclosure (NEW Sept 2016)

Adjustable Pedestal Helm Seat (NEW 2013) w/Cover

Companion Seating at Helm w/Cover

Fiberglass Dash with Full Instrumentation w/Cover

Stainless Steel Grab Rails on Either End of Helm

Tilt Steering Wheel

Wraparound Windshield, Aluminum Frame

AM/FM/CD Stereo

L-Shaped Lounge w/Cover and Storage Beneath

Wet Bar w/Sink and New Faucet, Prep Surface

Ice Maker

Storage Locker

LED Courtesy Lighting

Carpet, Removable

---

## Cockpit

---

There is boarding Access from port or starboard or via the transom door. There is also direct access to the master stateroom via a sliding door.

Integral Steps from Cockpit to Aft Deck w/Stainless Steel Handrail

Sliding Door Access to Master Stateroom

LED Courtesy Lighting

Storage Locker

Storage Hatch in Deck, Provides Access to Aft Bilge

Stainless Steel Rail with 4 Rocket Launchers

Transom Door

Hot and Cold Shower

Stainless Steel Hand Rail Across Entire Transom

## Deck and Hull

---

Bottom was painted in 2015. At that time, the props were balanced and conditioned and thru hulls replaced if needed.

Windlass, Electric with Foot Pads and Remote Control

Anchor with All Chain Rode

Fore Deck Locker, Self Draining, for Anchor Chain and Washdown

Foredeck Fender Holders

Foredeck Sunpads

Windshield Screen

Non-Skid Side Decks

Life Ring

Stainless Steel Rails

Stainless Steel Grab Rail Over Cabin Windows, Running Length of Cabin

Two Boarding Doors (Port & Starboard)

Swim Platform w/Boarding Ladder (Conceals in Boarding Platform)

Dock Box on Swim Platform

Life Raft (Recertified Sept 2016)

St Croix Davits (NEW 2010)

## Disclaimer

---

The Company offers the details of this vessel in good faith but cannot guarantee or warrant the accuracy of this information nor warrant the condition of the vessel. A buyer should instruct his agents, or his surveyors, to investigate such details as the buyer desires validated. This vessel is offered subject to prior sale, price change, or withdrawal without notice.

---

## Исключения

---

При продаже яхты исключаются личные вещи владельца.

---

## Отказ от ответственности

---

Компания предоставляет описание судна или яхты добросовестно, но не может гарантировать точность этой информации, а также не ручается за техническое состояние. Покупатель должен проинструктировать своих агентов или оценщиков исследовать представленную информацию более подробно, по собственному желанию. Продажа судна или яхты, изменение цены или снятие с продажи будет происходить без предварительного уведомления.

# ФОТОГРАФИИ

Salon



Galley



Master Berth



Helm



Salon Port Sofa



Sofa Storage



### Salon Entertainment



### Opening Salon Window



### Galley



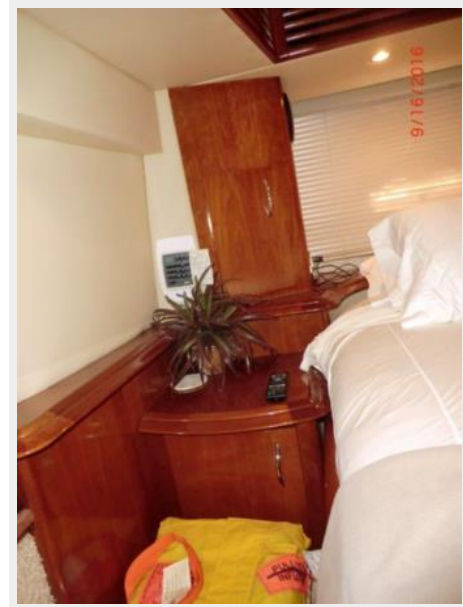
### Master Stateroom



**Master Stateroom**



**Master Stateroom**



**Master Stateroom**



**Master Stateroom**





**Master Stateroom**



**Master Stateroom**



**Master Head**



**Master Head**



**Forward Berth**



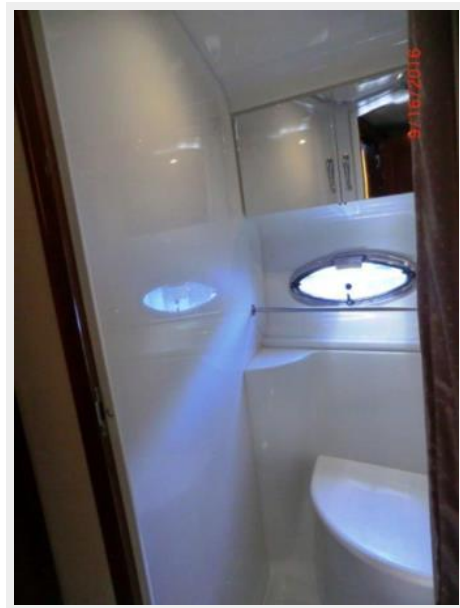
**Forward Stateroom**



**Forward Head**



**Forward Shower**



**Electrical Panel**



**Helm**



**Helm**



**New Helm Seat**



**Bridge**



**Bridge Seating**



**Companion Seating**



**Bridge Wet Bar & Icemaker**



**Aft Deck**



**Aft Deck**



**Chain Locker**



**Cockpit Storage**



**Cockpit**



**Cockpit**

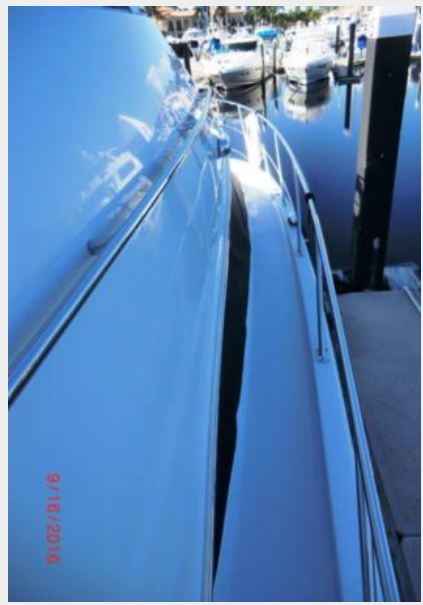


**Ground Tackle**

**Davit**



Side Deck



Life Raft



Generator



Engine Room



Engine Room



Engine Room



Engine Room



Engine Room



Profile



# КОНТАКТЫ

---

Андрей Шестаков (Andrey Shestakov) – ведущий яхтенный брокер отдела продаж яхт и судов компании Shestakov Yacht Sales Inc. Официальный представитель Shestakov Yacht Sales Inc. для русскоговорящих клиентов в центральном офисе компании в Майами/Форт Лодердейл/Флорида/США.

## Контактная информация

---

Email: [andrey@shestakovyachtsales.com](mailto:andrey@shestakovyachtsales.com)

Web: [shestakovyachtsales.com](http://shestakovyachtsales.com)

## Телефоны

---

Краснодарский край: **+7(918)465-66-44**

США, Майами, Флорида: **+1(954)274-4435**

## Время работы

---

Понедельник – Суббота: **9:00 - 21:00**  
EDT

Воскресенье: **Закрито**

## Адрес

---



Harbour Towne Marina, 850 NE 3rd St,  
STE 213, Dania, FL 33004