

## HORIZON E88 — HORIZON



**Судостроитель:** HORIZON

**Год постройки:** 2016

**Модель:** Моторная яхта

**Цена:** ЦЕНА ЯХТЫ ПО ЗАПРОСУ

**Местонахождение:** United States

**Длина общая:** 88' 0" (26.82m)

**Ширина:** 21' 0" (6.40m)

**Макс. осадка:** 5' 7" (1.70m)

Купить **Horizon E88 — HORIZON** а также выбрать подходящую вам яхту из нашего каталога яхт вам поможет опытный яхтенный брокер Андрей Шестаков. На сегодняшний день компания **Shestakov Yacht Sales Inc.** имеет большое количество яхт в собственном списке продаж, а также тесно сотрудничает со всеми крупными яхтенными производителями по всему миру.

Для того чтобы купить яхту **Horizon E88 — HORIZON** а также проконсультироваться по любому вопросу связанному с покупкой, продажей, чартером яхт позвоните по телефону **+7(918)465-66-44**.

# ОГЛАВЛЕНИЕ

ОГЛАВЛЕНИЕ	2
ХАРАКТЕРИСТИКИ	6
Обзор	6
Основная информация	6
Размеры	6
Скорость, вместимость и масса	6
Размещение	7
Корпус и палуба	7
Информация о двигателе	7
ПОДРОБНОЕ ОПИСАНИЕ	8
Main Deck & Superstructure	8
Forward & Aft Decks	8
Skylounge & Boat Deck	8
Interior Décor & Equipment	9
Salon	9
Galley	10
Master Stateroom	10
VIP Stateroom	10
Twin Guest Staterooms (2)	10
Crew Quarters	10
Engine & Propulsion Details	11
Mechanical Systems	11
Electrical Systems	12
Electronics	12
Pilothouse Navigation	12
Disclaimer	13
Исключения	13
Отказ от ответственности	13

ФОТОГРАФИИ	14
Exterior II	14
Exterior III	14
Exterior V	14
Exterior IV	14
Exterior VI - Beach Club	14
Exterior VII	14
General Layout	15
Exterior VIII	15
Bow Seating	15
Swim Platform/Beach Club	15
Beach Club	16
Aft Deck	16
Aft Deck	16
Aft Deck/Bar	16
Salon	16
Salon	16
View Portside of Salon	17
Formal Dining	17
Dayhead	17
Formal Dining	17
Dayhead	18
Galley	18
Galley	18
Country Kitchen	18
Master Stateroom	18
Master Stateroom	18
Master Stateroom	19
Master Stateroom	19

Master Decor	19
Master Head	19
VIP Stateroom	19
Master Head	19
VIP Stateroom	20
VIP Stateroom TV	20
Companionway	20
VIP Head	20
Twin Guest Starboard Head	21
Twin Guest Starboard Stateroom	21
Twin Guest Port Stateroom	21
Twin Guest Port Head	21
Crew Quarters	22
Crew Quarters	22
Stairwell to Skylounge	22
Skylounge/Pilothouse	22
Skylounge/Pilothouse	23
Skylounge/Pilothouse	23
Skylounge Helm	23
Skylounge Helm Seating	23
Skylounge Desk	23
Flybridge	23
Flybridge	24
Flybridge	24
Engine Room	24
<b>КОНТАКТЫ</b>	<b>25</b>
Контактная информация	25
Телефоны	25
Время работы	25

---

Адрес

25

---

# ХАРАКТЕРИСТИКИ

## Обзор

Customized with the U.S. market in mind, this 2017 Horizon E88 skylounge motoryacht features four en-suite guest staterooms, plus (2) private crew quarters aft, and a new galley design with an island configuration that allows for a more relaxed and casual feel for the space. Her design theme – luxury island living – is represented with beautiful light Oak in a semi-gloss finish and rich teak wood accents. Her enclosed skylounge, beach club design, and island-friendly 5'7" draft ensures you can cruise this E88 from the North to the South and beyond.

One of Horizon's most popular models and an award-winning yacht, the Horizon E88 was designed by John Lindblom to retain her sleek style lines and functionality in both the open bridge or skylounge versions. The E88's voluminous 21' beam creates a generous interior space for guests and crew as well as wide, safe side deck walkarounds. Her main deck level allows for an uninterrupted transition between the salon and galley areas. A variety of interior and exterior layout options provide you with the flexibility to customize the E88 to satisfy your personal yachting needs.

## Основная информация

**Тип судна:** Моторная яхта

**Подкатегория:** Sky Lounge

**Модельный год:** 2017

**Год постройки:** 2016

**Страна:** United States

**Открытая палуба мостика:** Да

## Размеры

**Длина общая:** 88' 0" (26.82m)

**Длина по ватерлинии:** 75' 6" (23.01m)

**Ширина:** 21' 0" (6.40m)

**Макс. осадка:** 5' 7" (1.70m)

## Скорость, вместимость и масса

**Водоизмещение:** 194072 Pounds

**Вместимость воды:** 500 Gallons

**Вместимость сточного бака:** 200 Gallons **Объем топливного бака:** 2700 Gallons

## Размещение

---

**Всего кают:** 4

**Всего коек:** 6

**Спальные места:** 10

**Всего ком. состава:** 6

**Каюта капитана:** Да

**Каюты экипажа:** 2

**Койки экипажа:** 3

**Спальных мест экипажа:** 4

**Комм. состав экипажа:** 1

## Корпус и палуба

---

**Материал корпуса:** Fiberglass

## Информация о двигателе

---

**Двигатели:** 2

**Производитель:** CAT

**Модель:** C32

**Тип двигателя:** Inboard

**Тип топлива:** Diesel

---

# ПОДРОБНОЕ ОПИСАНИЕ

---

## Main Deck & Superstructure

---

- White gel coat finish
- One-piece hull VARTM cored lamination w/deep skeg and longitudinal girders
- Solid fiberglass hull bottom
- High density foam cored hull sides, decks and superstructure
- Stringers with high density foam coring
- Foam cored reinforcement for strength
- Interior structural components all properly bonded to hull
- Strong collision bulkhead for extra safety
- International brand anti-fouling bottom paint w/ anti-osmosis treatment

## Forward & Aft Decks

---

- Non-skid fwd deck
- (2) High tensile 1/2", 250ft anchor chains
- (2) Anchor chain counters
- (2) S/S 80kg anchors
- (2) Maxwell 400 series windlass
- Freshwater anchor chain washdown
- Heavy-duty S/S 2" handrail w/ 1-1/4" stanchions
- (4) FRP bulwark side doors
- Frameless windows, tinted Low-E tempered glass
- U-shaped fwd seating & dinette w/ sunpads
- Fwd deck storage lockers for fenders & lines
- Teak aft deck, swim platform & teak steps
- S/S sliding door for main salon, self-locking
- (2) Aft deck corner fairleads
- Custom aft deck Hi/Lo teak dining table
- Aft deck bar w/ sink & combo fridge/icemaker
- Aft deck electrical folding TV cabinet w/ 32" Samsung LED TV
- Bose Lifestyle SA-3 stereo system
- Hydraulic Hi/Lo swim platform (1500 lb load capacity)
- Hydraulic full-width stern door & beach club area

## Skylounge & Boat Deck

---

- Skylounge design w/ dinette, Hi/Lo table, dayhead, desk, fridge & (2) STIDD helm chairs
- Skylounge door design w/ manual sliding door & electric Hi/Lo window



- Custom designed helm w/ full set of engine gauges, monitoring system for important equipment, fuel & water gauges, Ritchie Supersport magnetic compass, bilge pump panel & navigational lights
- 30" Samsung LED TV w/ Hi/Lo function
- Apple TV
- Non-skid boat deck
- Removable S/S rails around boat deck
- Oversize drains w/ strainer on each corner w/ internal overboard drains
- Custom boat deck FRP dinette and table
- FRP cabinet w/ sink & combo fridge/icemaker
- Hi/Lo 24" Aritex propane BBQ in FRP cabinet
- Mast w/ antenna bracket
- Single hatch on hardtop
- (2) Tokai Sanshin search lights
- Buell air horns on top of radar arch
- Hydraulic dinghy davit Steelhead SM2500

---

## Interior Décor & Equipment

---

- Guest accommodations include master stateroom, VIP cabin & port and stbd twin cabins, all en suite
- Crew area has 2 staterooms, full head, crew galley & dinette, w/ access from salon & transom
- Oak semi-gloss wood on main deck & guest staterooms w/ teak accents
- GE stacked washer/dryer in guest companionway
- Custom luxury interior package for décor & lighting

---

## Salon

---

- Custom stone floor at salon entrance
- Custom dining table w/ eight chairs
- Leather L-shaped sofa & loveseat
- Electric blinds
- Wine cooler, icemaker
- Aft dayhead in main salon
- Custom Hi/Lo glass screen separating salon & galley
- 55" Samsung LED TV
- Samsung Blu-ray player
- Bose Lifestyle V35 home theater system w/ iPod dock
- Apple TV

---

## Galley

---

- New island design with prep sink
- Stone countertops & country kitchen tabletop
- Sub-Zero full height refrigerator w/ freezer drawer
- Sub-Zero fridge & freezer drawers per GA
- GE microwave & oven
- S/S pot & pan holders over cooktop in galley
- Full set of tableware + cookware for 10 guests
- Built-in holders for glasses, plates & dishes
- 32" Samsung LED TV
- Bose Lifestyle SA-3 stereo system

---

## Master Stateroom

---

- 48" Samsung LED TV
- Bose Lifestyle 135 home theatre system w/ iPod dock
- Samsung Blu-ray player
- Apple TV

---

## VIP Stateroom

---

- 40" Samsung LED TV
- Bose Lifestyle 135 home theatre system w/ iPod dock
- Apple TV

---

## Twin Guest Staterooms (2)

---

- 32" Samsung LED TV
- Fusion stereo system

---

## Crew Quarters

---

- Summit fridge/freezer drawers
- GE microwave
- GE stacked washer/dryer
- 32" Samsung LED TV
- Fusion stereo system

---

## Engine & Propulsion Details

---

- Twin CAT C32A 1900 HP engines
- S/S shafts Aqualoy 22HS
- 6 Blade propellers
- Main & intermediate bronze struts w/ backing plates
- Shaft & rudder packing glands w/ Tides Marine seals
- ABT Zero Speed Stabilizer (370/16X)
- Hydraulic ABT bow & stern thrusters, 46HP each
- Complete Delta-T engine room ventilation system
- Back-up system & remote hand held control for Glendinning engine controls
- Spare rudder seals on the rudder shaft
- S/S emergency tiller in rudder cabin
- Underwater exhaust system for engines w/ mufflers
- Engine mounts on S/S engine bed bonded to FRP hull girder
- Fire insulation & insulated ER door
- Engine alarm system for low oil pressure & high water temp
- Air compressor
- Central vacuum cleaner

---

## Mechanical Systems

---

- Chilled water Marine Air air conditioning, (3) units 5T each
- Backup A/C circulation pump
- 2,700 gallon aluminum fuel tanks w/ sight & electrical gauges, (2) Main - 1010 and (1) Auxiliary - 680
- Dual Racor 75/1000 MA fuel filters/water separator, each engine
- Electric fuel transfer pump plus one manual emergency spare pump
- Reverso FPS210 fuel polishing system
- Oil change pump system for engines & generators
- 500 gallon fiberglass water tank
- Sea Recovery AQM water maker, 900 gal/day
- High-volume AC fresh water pressure pump & back up DC pump
- Fresh water charcoal filters in main supply pipe & galley
- Marine grade lines for fresh water system
- (2) 30 gallon water heaters
- Hot water circulation pump
- Headhunter sanitary waste treatment system
- Tecma toilet system
- 200 gallon holding tank w/ macerator pump
- 100 gallon sump tank
- "Y" valve for holding tank with deck fitting for dockside pump out
- Five electric RULE bilge pumps

- (2) Manual bilge pumps in ER & forward cabin
- Bilge exhaust ventilation fans
- Seafire fixed fire extinguisher (FM200) for ER w/ remote control
- Auto shutdown system
- Automatic fire damper system
- (5) Portable fire extinguishers in recessed lockers

## Electrical Systems

---

- LED lighting system throughout interior & exterior
- Maretron monitoring & control system
- (2) Onan 29kW generators w/ sound shields
- 100A shore power system w/ (2) 100A Glendinning cable masters & (2) 100A Charles ISO boost transformers & (2) shore power plugs on fwd deck
- (2) House battery inverter/chargers
- Vapor proof battery switch
- (4) Engine start batteries 255Ah Lifeline AGM
- (8) 210Ah Lifeline AGM batteries for boat's DC 24V service power
- (2) 210Ah Lifeline emergency batteries w/ dedicated Charles charger
- Generator gauge w/ (2) start & stop buttons on FB
- GFI protection for all AC outlets in heads, galley & ER
- Electrolysis bonding system
- Cathodic protection w/ zinc anodes for shafts, struts, etc.
- (8) Underwater lights
- (2) Stern docking lights

## Electronics

---

- (5) Panasonic KX Telephone w/ intercom feature in salon, pilothouse, master, VIP & crew mess
- Exterior connector for shore phone & TV
- KVH Tracvision HD7 satellite TV antenna & dummy dome
- WiFi booster system w/ wireless routers

## Pilothouse Navigation

---

- Garmin 8000 navigational system
- (3) GPSMAP 8215 MDF 15" multifunction displays
- GMR 624 HD open array radar 6kW, 72nm
- GMR 1226 HD open array radar 12kW, 72nm
- GXM Satellite weather antenna

- (3) 200 Garmin VHF's
- AIS 600 Class B Transceiver
- GHC 20 Garmin Autopilot control unit
- GHP 20 Garmin reactor hydraulic corepak w/ smart pump
- GRF 10 Garmin rudder feedback
- GMI 20 Garmin instrument display w/ Wind transducer; depth, speed & temp transducer
- GND 10 Black box bridge
- GNT 20 NMEA 200 transceiver
- Garmin Wi-Fi adapter kit

## Disclaimer

---

The Company offers the details of this vessel in good faith but cannot guarantee or warrant the accuracy of this information nor warrant the condition of the vessel. A buyer should instruct his agents, or his surveyors, to investigate such details as the buyer desires validated. This vessel is offered subject to prior sale, price change, or withdrawal without notice.

## Исключения

---

При продаже яхты исключаются личные вещи владельца.

## Отказ от ответственности

---

Компания предоставляет описание судна или яхты добросовестно, но не может гарантировать точность этой информации, а также не ручается за техническое состояние. Покупатель должен проинструктировать своих агентов или оценщиков исследовать представленную информацию более подробно, по собственному желанию. Продажа судна или яхты, изменение цены или снятие с продажи будет происходить без предварительного уведомления.

# ФОТОГРАФИИ

**Exterior II**



**Exterior III**



**Exterior V**



**Exterior IV**



**Exterior VI - Beach Club**



**Exterior VII**



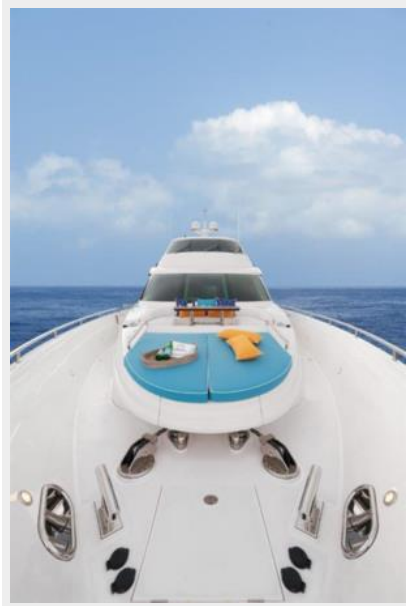
### Exterior VIII



### General Layout



### Bow Seating



### Swim Platform/Beach Club



**Beach Club**



**Aft Deck**



**Aft Deck**



**Aft Deck/Bar**



**Salon**



**Salon**





**View Portside of Salon**



**Formal Dining**



**Dayhead**



**Formal Dining**



**Dayhead**



**Galley**



**Galley**



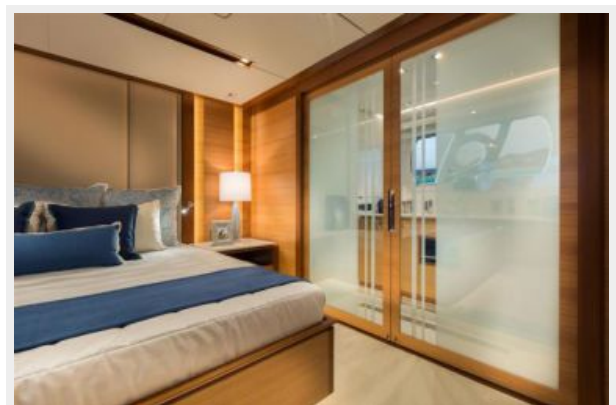
**Country Kitchen**



**Master Stateroom**



**Master Stateroom**



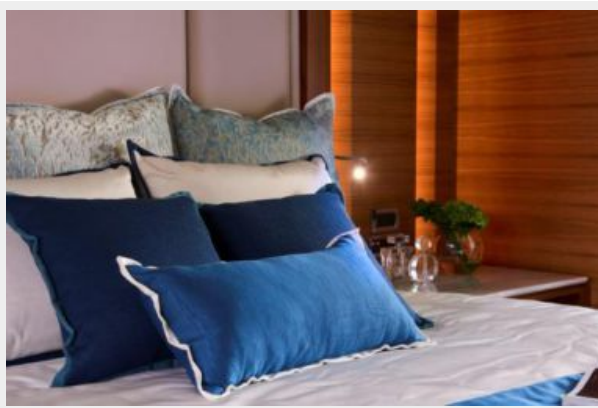
**Master Stateroom**



**Master Stateroom**



**Master Decor**



**Master Head**



**Master Head**



**VIP Stateroom**



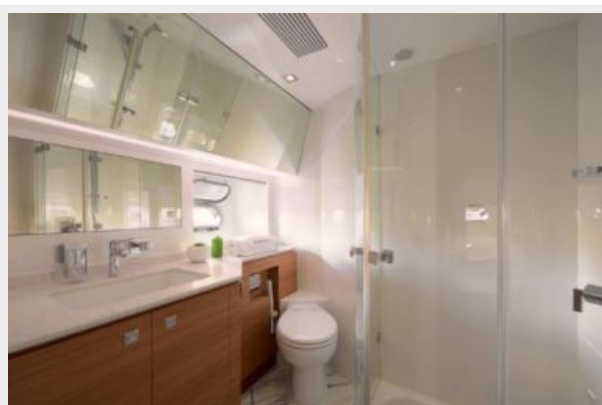
**VIP Stateroom**



**VIP Stateroom TV**



**VIP Head**



**Companionway**



**Twin Guest Starboard Stateroom**



**Twin Guest Starboard Head**



**Twin Guest Port Stateroom**



**Twin Guest Port Head**



**Crew Quarters**



**Crew Quarters**



**Stairwell to Skylounge**



**Skylounge/Pilothouse**



**Skylounge/Pilothouse**



**Skylounge/Pilothouse**



**Skylounge Helm**



**Skylounge Helm Seating**



**Skylounge Desk**



**Flybridge**



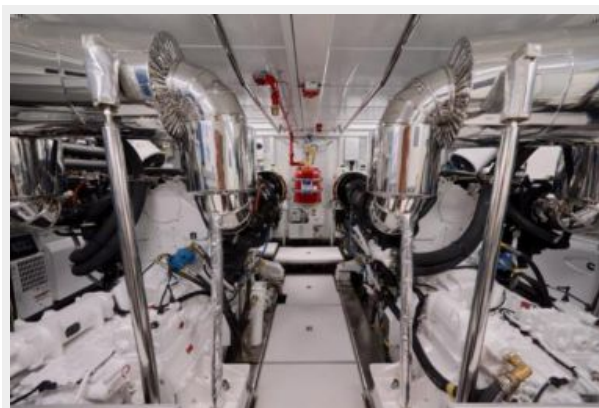
**Flybridge**



**Flybridge**



**Engine Room**





# КОНТАКТЫ

---

Андрей Шестаков (Andrey Shestakov) – ведущий яхтенный брокер отдела продаж яхт и судов компании Shestakov Yacht Sales Inc. Официальный представитель Shestakov Yacht Sales Inc. для русскоговорящих клиентов в центральном офисе компании в Майами/Форт Лодердейл/Флорида/США.

## Контактная информация

---

Email: [andrey@shestakovyachtsales.com](mailto:andrey@shestakovyachtsales.com)

Web: [shestakovyachtsales.com](http://shestakovyachtsales.com)

## Телефоны

---

Краснодарский край: **+7(918)465-66-44**

США, Майами, Флорида: **+1(954)274-4435**

## Время работы

---

Понедельник – Суббота: **9:00 - 21:00**  
EDT

Воскресенье: **Закрито**

## Адрес

---



Harbour Towne Marina, 850 NE 3rd St,  
STE 213, Dania, FL 33004