

GRADY WHITE 300 — GRADY WHITE



Builder: GRADY WHITE

Year Built: 2005

Model: Cruiser

Price: PRICE ON APPLICATION

Location: United States

LOA: 32' 6" (9.91m)

Beam: 10' 7" (3.23m)

Max Draft: 1' 7" (0.48m)

Cruise Speed: 31 Kts. (36 MPH)

Max Speed: 47 Kts. (54 MPH)

Our experienced yacht broker, Andrey Shestakov, will help you choose and buy a yacht that best suits your needs **GRADY WHITE 300 — GRADY WHITE** from our catalogue. Presently, at Shestakov Yacht Sales Inc., we have a wide variety of yachts available on our sale's list. We also work in close contact with all the big yacht manufacturers from all over the world.

If you would like to buy a yacht **GRADY WHITE 300 — GRADY WHITE** or would like help answering any questions concerning purchasing, selling or chartering a yacht, please call **+1(954)274-4435**

TABLE OF CONTENTS

TABLE OF CONTENTS	2
SPECIFICATIONS	3
Basic Information	3
Dimensions	3
Speed, Capacities and Weight	3
Accommodations	3
Hull and Deck Information	3
Engine Information	4
DETAILED INFORMATION	5
Accommodations	5
Galley	5
Electronics	5
Electrical	5
Deck	6
Misc. Equipment	6
Remarks	6
Exclusions	6
Disclaimer	6
PHOTOS	7
CONTACTS	10
Contact details	10
Telephones	10
Office hours	10
Address	10

SPECIFICATIONS

Basic Information

Category: Cruiser

Sub Category: Express

Model Year: 2005

Year Built: 2005

Country: United States

Dimensions

LOA: 32' 6" (9.91m)

LWL: 30' 6" (9.30m)

Beam: 10' 7" (3.23m)

Max Draft: 1' 7" (0.48m)

Clearance: 9' 9" (2.97m)

Speed, Capacities and Weight

Cruise Speed: 31 Kts. (36 MPH)

Max Speed: 47 Kts. (54 MPH)

Displacement: 8221 Pounds

Water Capacity: 39 Gallons

Holding Tank: 10 Gallons

Fuel Capacity: 306 Gallons

Accommodations

Total Cabins: 1

Sleeps: 4

Total Heads: 1

Hull and Deck Information

Hull Material: Fiberglass

Hull Configuration: Deep Vee

Hull Designer: Grady White

Engine Information

Engines: 2

Manufacturer: Yamaha

Model: F250TXR

Engine Type: Outboard

Fuel Type: Gas

DETAILED INFORMATION

Accommodations

- V-berth forward with dinette table that converts to a filler for V-Berth.
- Double mid-cabin berth.
- Head with sink, shower and Vacuflush toilet with monitoring system.
- Flat screen LCD w/DVD & CD player.
- Satellite stereo.
- Curtains & Screens

Galley

- Sink
- Microwave
- Electric single burner glass top stove
- Refrigerator/Freezer

Electronics

- GPS - Garmin GPS 3010
- Radar-Garmin 3010
- Depthfinder Garmin 3010
- Compass - RITCHIE
- Radio - KENWOOD
- DVD player
- CD player - KENWOOD KDC 225 MR
- Cockpit speakers
- VHF - ICOM IC-M422

Electrical

- (4) 12V batteries.
- Battery selector switch.
- Battery charger.
- Shore power.
- Phone & cable receptacles.
- Water heater 120V 6 gallons

Deck

- Hardtop with full canvas enclosure
- Custom cockpit sunshade
- Rocket launchers
- Rear fold down bench seat
- Seat cushions
- Swim platform with ladder
- Two bilge pumps
- Spreader lights
- Windlass with Delta anchor
- Bait and tackle center
- Livewell.
- Insulated fish box
- Fresh & saltwater washdown
- Trim tabs

Misc. Equipment

- Fire extinguishers
- Life Jackets

Remarks

New to Market, this well maintained 2005 Grady White 300 Marlin is powered by the highly desirable Yamaha F250's that only have 363 hours on them.

Exclusions

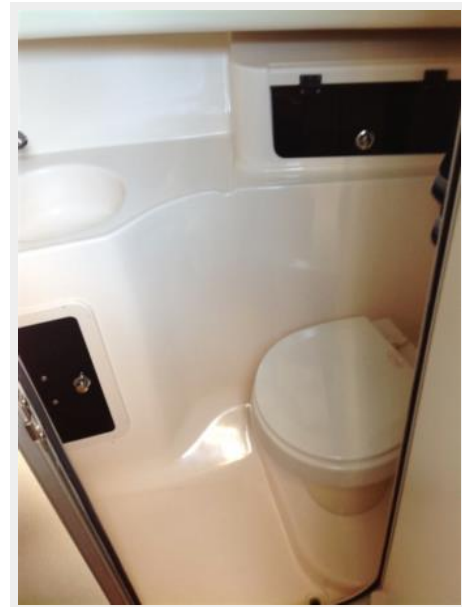
Owner's personal belongings.

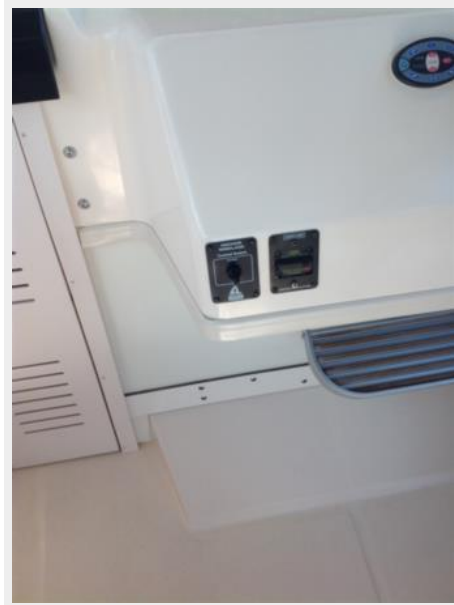
Disclaimer

The Company offers the details of this vessel or yacht in good faith but cannot guarantee or warrant the accuracy of this information nor warrant the condition of the vessel. A buyer should instruct his representatives, agents, or his surveyors, to investigate such details as the buyer desires validated. This vessel or yacht is offered subject to prior sale, price change, or withdrawal without notice.

PHOTOS







CONTACTS

Andrey Shestakov, leading yacht broker of the sales department of Shestakov Yacht Sales Inc. Shestakov Yacht Sales Inc., the official representative of the Miami/Fort Lauderdale FL headquarters.

Contact details

Email: andrey@shestakovyachtsales.com

Web: shestakovyachtsales.com/en/

Telephones

USA: +1(954)274-4435

Office hours

Monday – Saturday: **9:00 - 21:00** EDT

Sunday: **closed**

Address



Harbour Towne Marina, 850 NE 3rd St,
STE 213, Dania, FL 33004