

## IL SORELLE — ASTONDOA



**Builder:** ASTONDOA

**Year Built:** 2013

**Model:** Motor Yacht

**Price:** PRICE ON APPLICATION

**Location:** Mexico

**LOA:** 73' 6" (22.40m)

**Beam:** 18' 8" (5.69m)

**Min Draft:** 4' 3" (1.30m)

**Max Draft:** 4' 6" (1.37m)

**Cruise Speed:** 20 Kts. (23 MPH)

**Max Speed:** 25 Kts. (29 MPH)

Our experienced yacht broker, Andrey Shestakov, will help you choose and buy a yacht that best suits your needs **IL SORELLE — ASTONDOA** from our catalogue. Presently, at Shestakov Yacht Sales Inc., we have a wide variety of yachts available on our sale's list. We also work in close contact with all the big yacht manufacturers from all over the world.

If you would like to buy a yacht **IL SORELLE — ASTONDOA** or would like help answering any questions concerning purchasing, selling or chartering a yacht, please call **+1(954)274-4435**

---

# TABLE OF CONTENTS

---

TABLE OF CONTENTS	2
SPECIFICATIONS	3
Overview	3
Basic Information	3
Dimensions	3
Speed, Capacities and Weight	3
Accommodations	4
Hull and Deck Information	4
Engine Information	4
PHOTOS	5
CONTACTS	40
Contact details	40
Telephones	40
Office hours	40
Address	40

---

# SPECIFICATIONS

---

## Overview

---

Astondoa

## Basic Information

---

**Category:** Motor Yacht

**Sub Category:** Flybridge

**Model Year:** 2013

**Year Built:** 2013

**Country:** Mexico

**Vessel Top:** Hardtop

**Fly Bridge:** Yes

## Dimensions

---

**LOA:** 73' 6" (22.40m)

**Beam:** 18' 8" (5.69m)

**Min Draft:** 4' 3" (1.30m)

**Max Draft:** 4' 6" (1.37m)

## Speed, Capacities and Weight

---

**Cruise Speed:** 20 Kts. (23 MPH)

**Max Speed:** 25 Kts. (29 MPH)

**Displacement:** 107000 Pounds

**Water Capacity:** 400 Gallons

**Holding Tank:** 100 Gallons

**Fuel Capacity:** 1162 Gallons

---

## Accommodations

---

**Total Cabins:** 4

**Total Berths:** 6

**Sleeps:** 8

**Total Heads:** 4

**Crew Cabin:** 1

**Crew Berths:** 2

**Crew Sleeps:** 2

**Crew Heads:** 1

---

## Hull and Deck Information

---

**Hull Material:** Fiberglass

**Deck Material:** Teak and Fiberglass

**Hull Finish:** Aluminum

---

## Engine Information

---

**Engines:** 2

**Manufacturer:** MAN

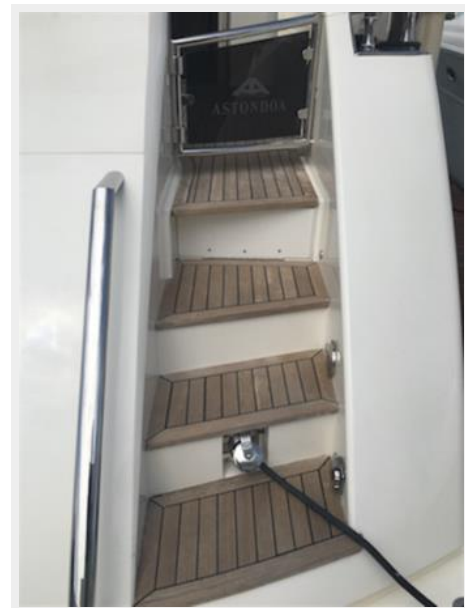
**Model:** V12-1224

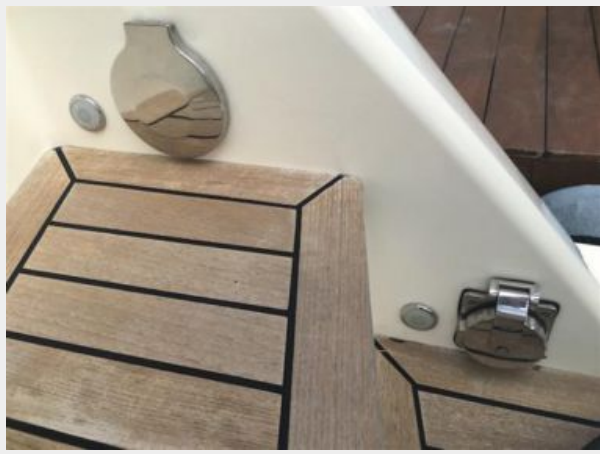
**Engine Type:** Inboard

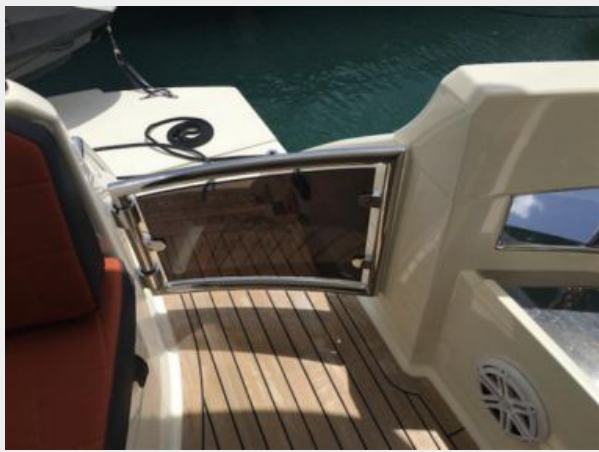
**Fuel Type:** Diesel

# PHOTOS









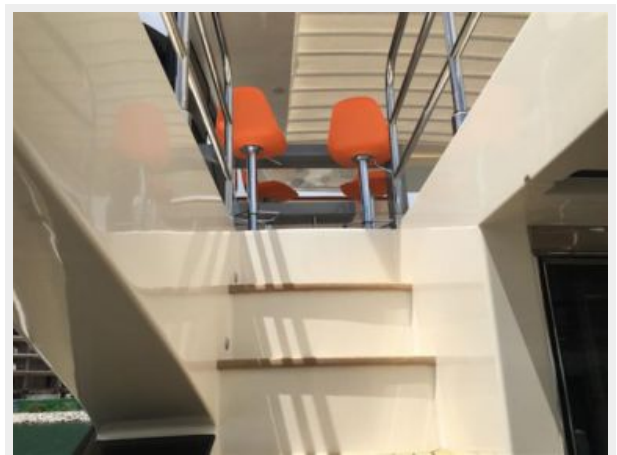












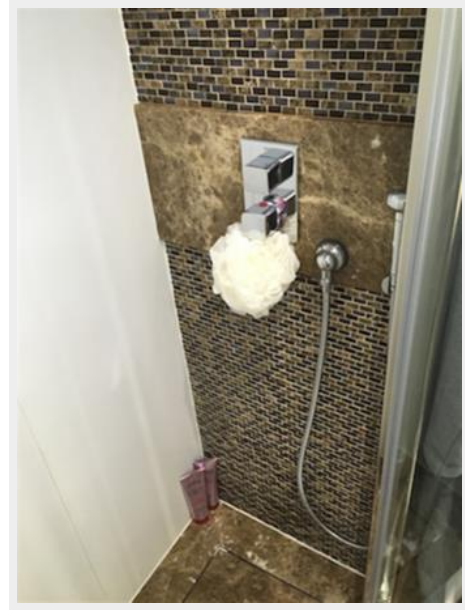










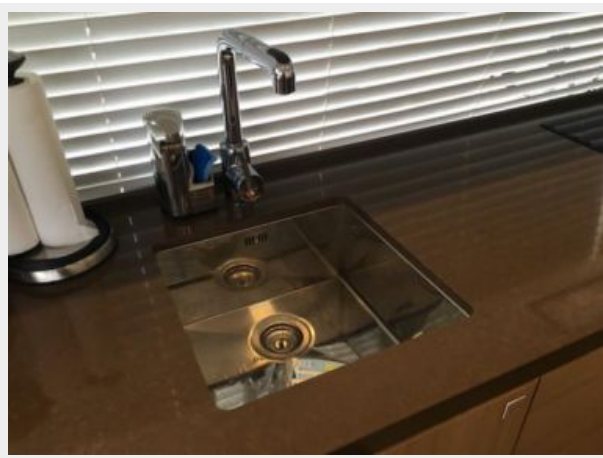
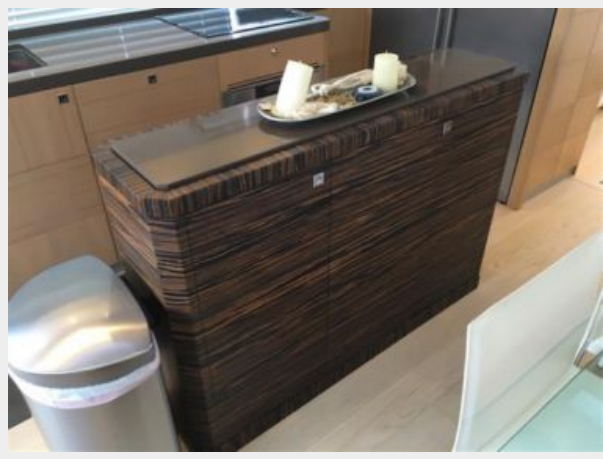


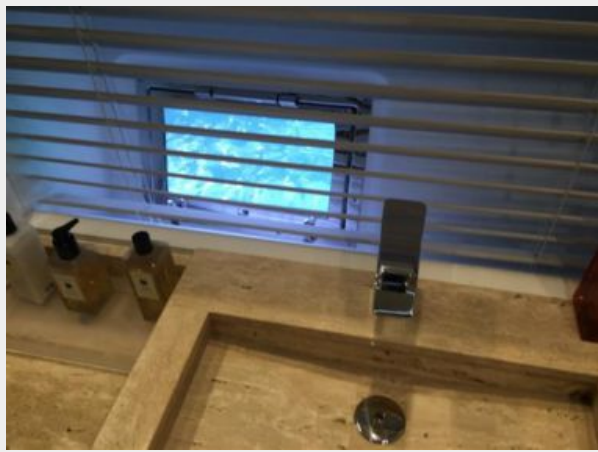




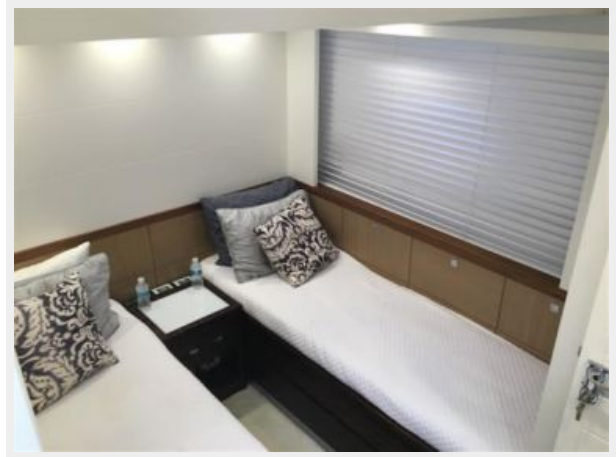




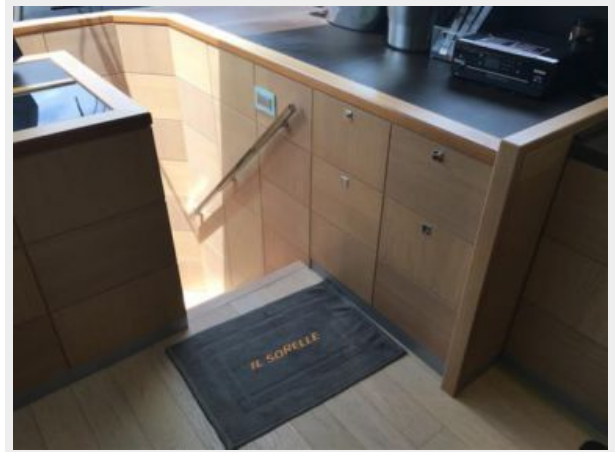


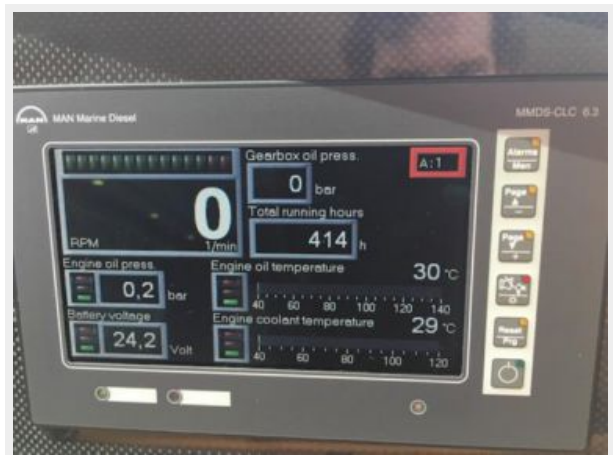
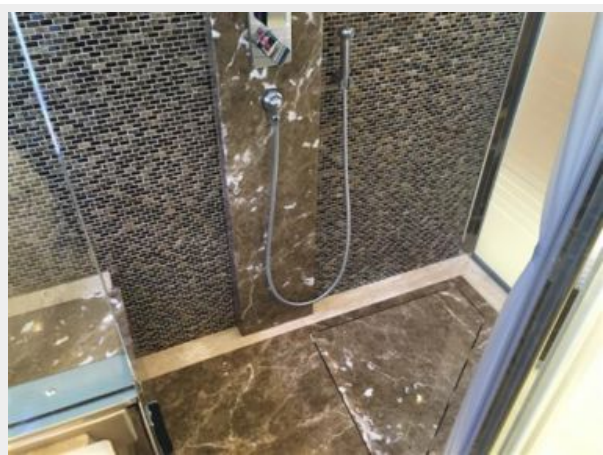
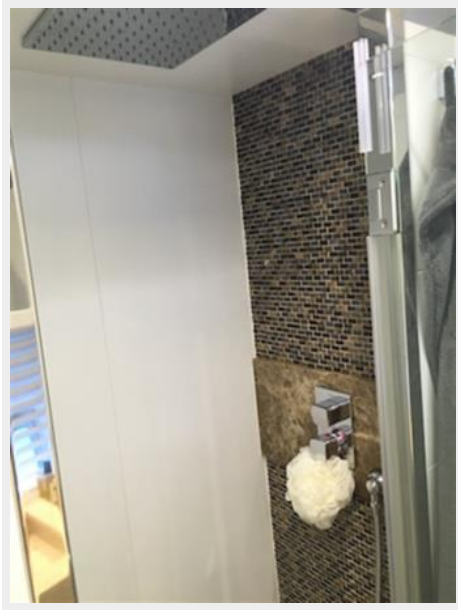


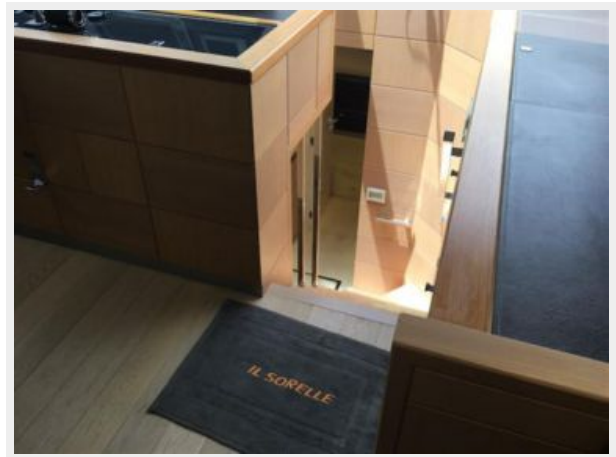
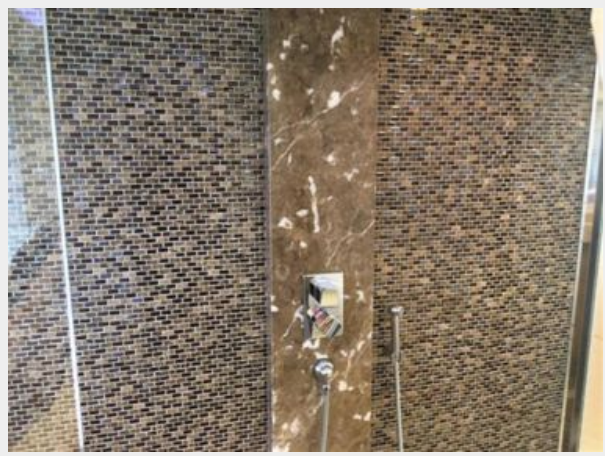


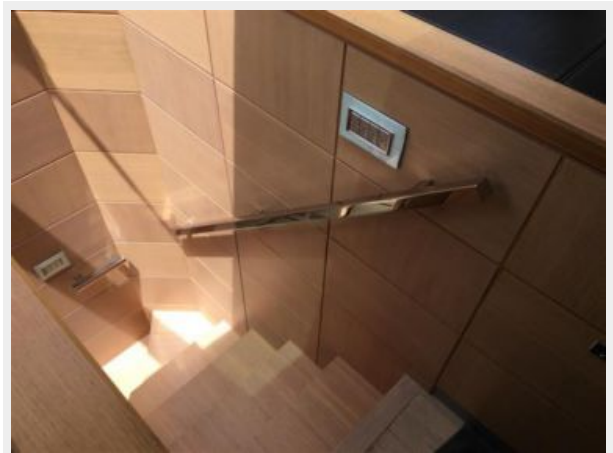
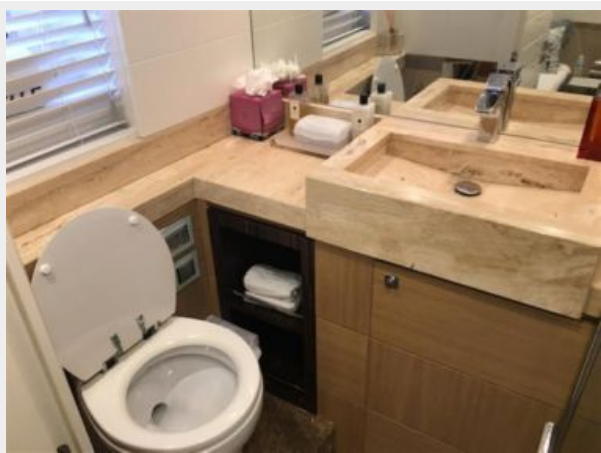


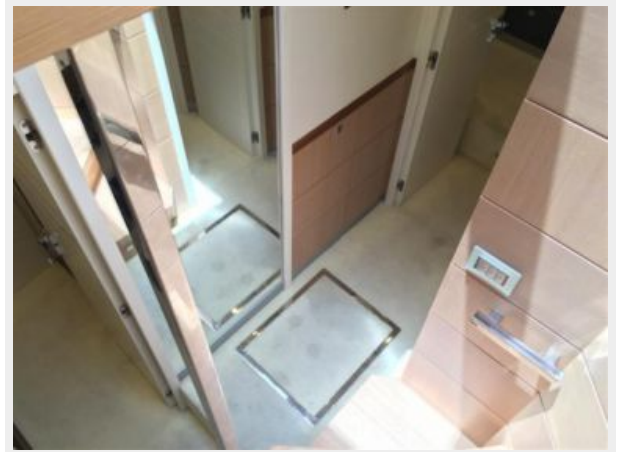
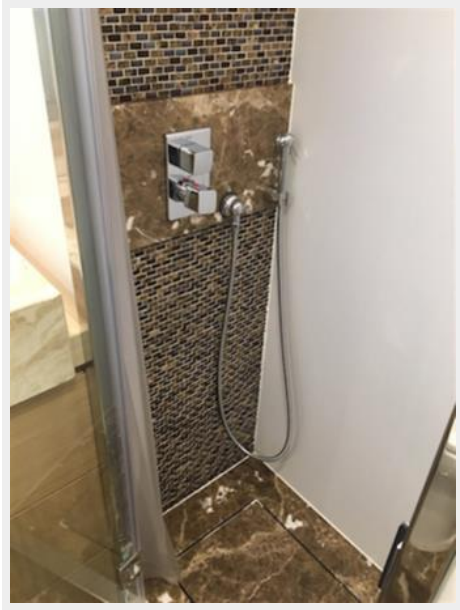


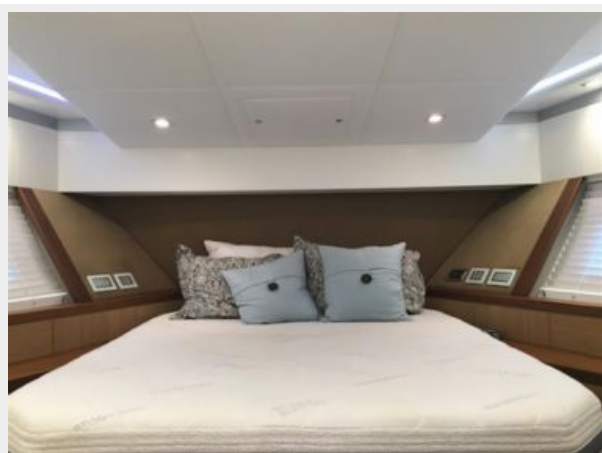
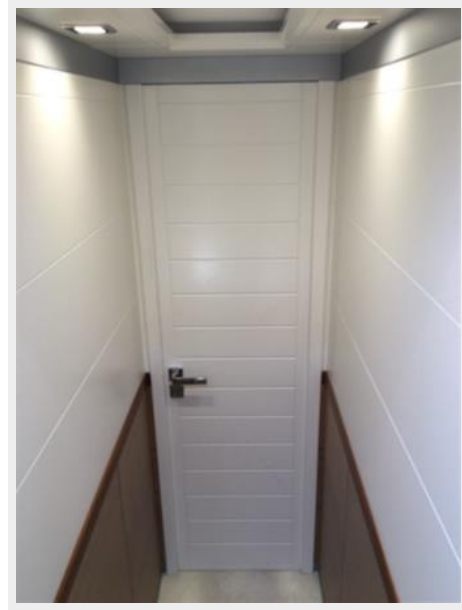






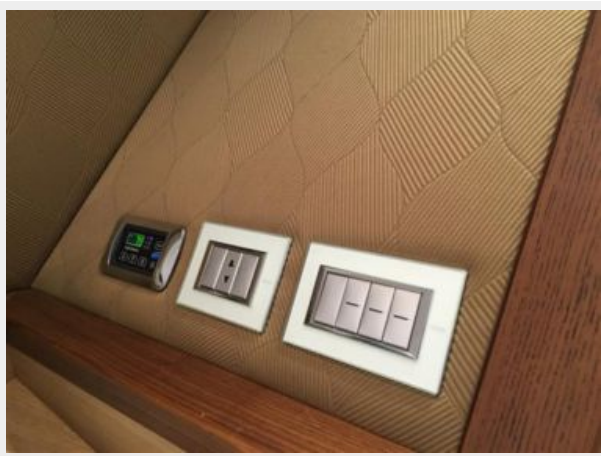


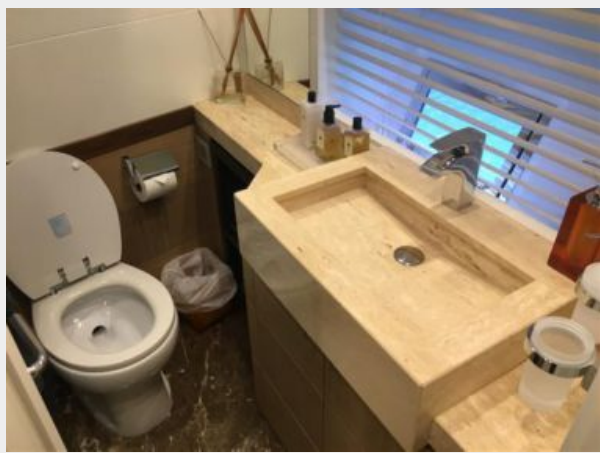
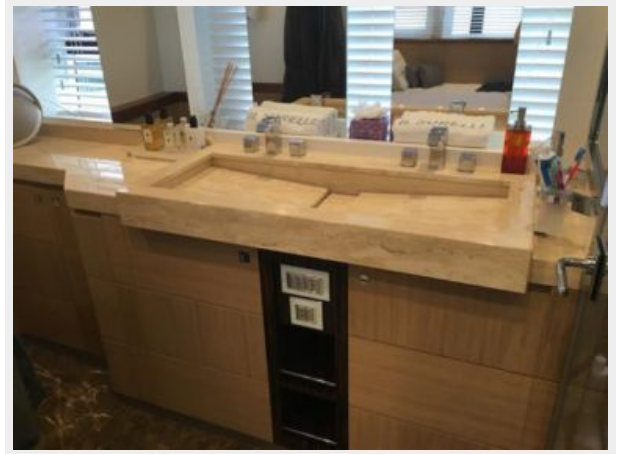






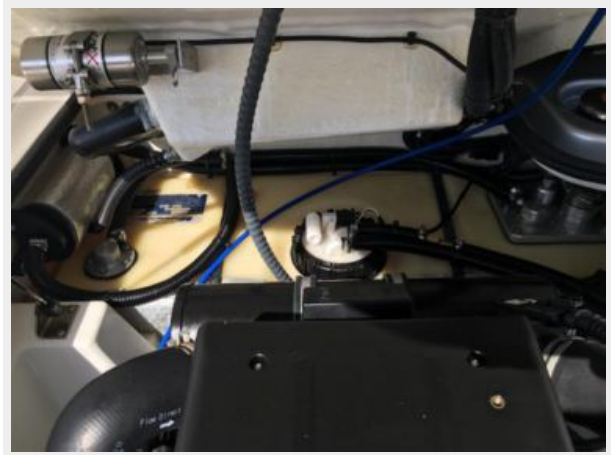














# CONTACTS

---

Andrey Shestakov, leading yacht broker of the sales department of Shestakov Yacht Sales Inc. Shestakov Yacht Sales Inc., the official representative of the Miami/Fort Lauderdale FL headquarters.

## Contact details

---

Email: **andrey@shestakovyachtsales.com**

Web: [shestakovyachtsales.com/en/](http://shestakovyachtsales.com/en/)

## Telephones

---

USA: +1(954)274-4435

## Office hours

---

Monday – Saturday: **9:00 - 21:00** EDT

Sunday: **closed**

## Address

---



Harbour Towne Marina, 850 NE 3rd St,  
STE 213, Dania, FL 33004