

ONLY 57 HOURS — FAIRLINE



Builder: FAIRLINE

LOA: 42' 0" (12.80m)

Year Built: 2014

Model: Motor Yacht

Price: PRICE ON APPLICATION

Location: United States

Our experienced yacht broker, Andrey Shestakov, will help you choose and buy a yacht that best suits your needs **Only 57 hours — FAIRLINE** from our catalogue. Presently, at Shestakov Yacht Sales Inc., we have a wide variety of yachts available on our sale's list. We also work in close contact with all the big yacht manufacturers from all over the world.

If you would like to buy a yacht **Only 57 hours — FAIRLINE** or would like help answering any questions concerning purchasing, selling or chartering a yacht, please call **+1(954)274-4435**

TABLE OF CONTENTS

TABLE OF CONTENTS	2
SPECIFICATIONS	3
Overview	3
Basic Information	3
Dimensions	4
Accommodations	4
Hull and Deck Information	4
Engine Information	4
PHOTOS	5
CONTACTS	9
Contact details	9
Telephones	9
Office hours	9
Address	9

SPECIFICATIONS

Overview

(LOCATION: Tampa FL) This almost new Fairline Squadron 42 has only 57 hours of use. She is an upscale cruiser designed for entertaining cruising. There is a large bridge with ample seating when you want to be together -- cockpit and cabin when you need some space. This Fairline has room to spread out on weekend cruises or at the dock.

Above is a spacious flybridge with low profile radar arch and bimini top. She has forward upper station with guest seating, lounge with table aft, but the center point is an on-deck galley with grill, sink, refrigerator, and ice maker. Designed for leisure living and quality entertaining, the bridge has it all. A stairway port side leads down to the cockpit.

Below, the covered cockpit features a teak deck with forward/rear seating and access to swim platform, side decks, and salon. The large swim platform has teak deck, freshwater shower, boarding ladder, and accommodations for personal watercraft.

Go through the slider from the cockpit to find the large open salon with large windows for natural light and designer blinds for privacy. There is a convertible sofa with table to one side and a cocktail cabinet with 32" flat screen that disappears when not in use. The elevated helm station is forward to starboard. The galley is down to port and has everything you need including a two-burner stove, grill, microwave oven, refrigerator, and an even an outstanding view.

A companionway takes you forward to two staterooms and head with shower. The forward stateroom has queen berth and en suite. The guest stateroom has a twin berths convertible to full berth with en suite with dual entry.

Powered by Volvo Penta 370-hp diesel engines she has only 57 hours. This almost new beauty has been lightly used, has all the options and is ready to cruise. If you are looking for a family cruiser that can adapt to your family instead of having them adapt to it, call now for a showing.

Basic Information

Category: Motor Yacht

Sub Category: Flybridge

Model Year: 2014

Year Built: 2014

Country: United States

Vessel Top: Bimini Top

Fly Bridge: Yes

Cockpit: Yes

Dimensions

LOA: 42' 0" (12.80m)

Accommodations

Total Cabins: 2

Total Heads: 2

Hull and Deck Information

Hull Material: Fiberglass

Engine Information

Engines: 2

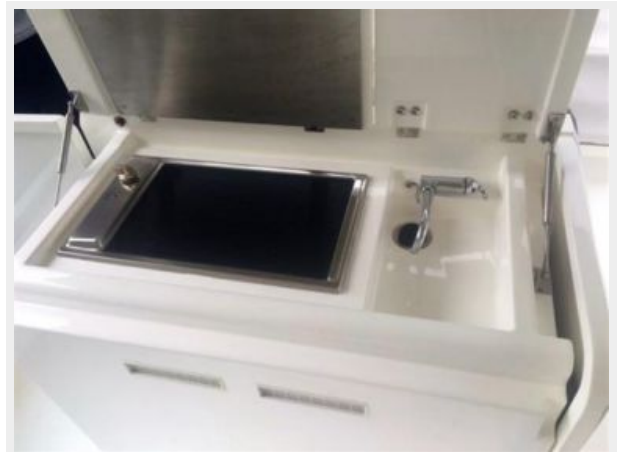
Manufacturer: Volvo Penta

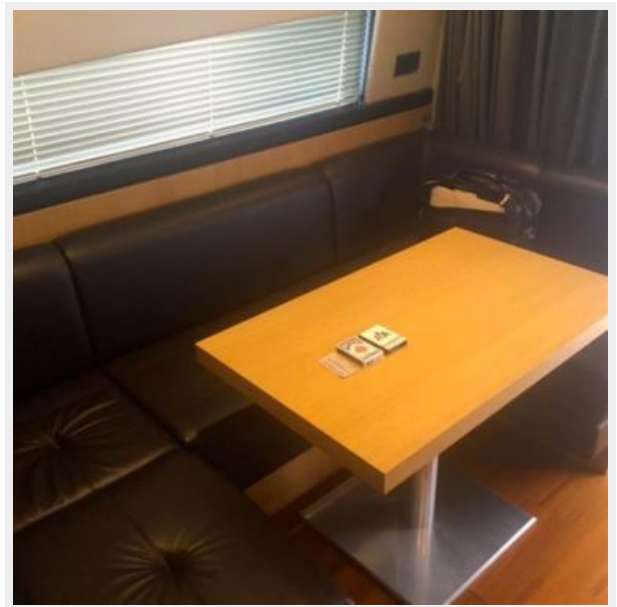
Model: 370 hp

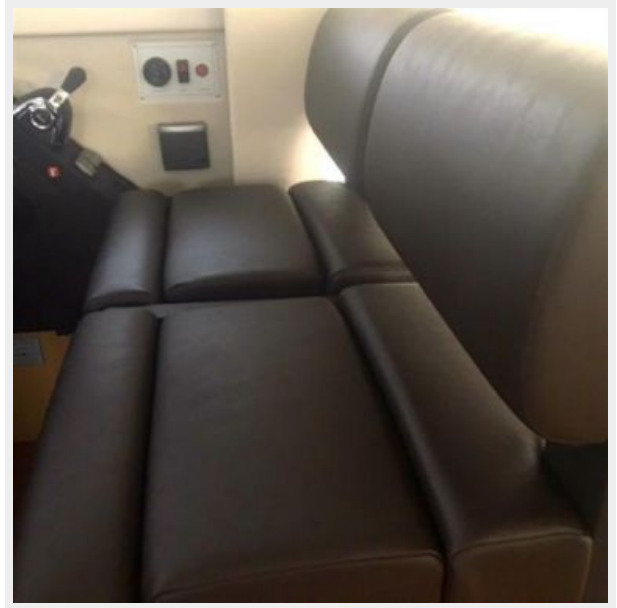
Engine Type: Inboard

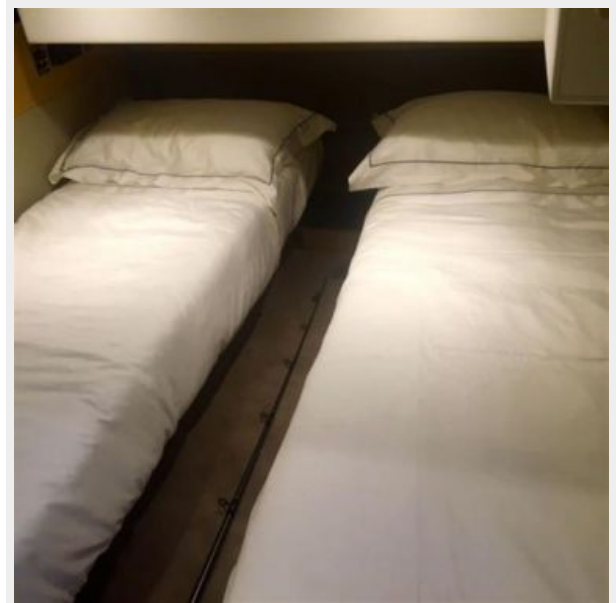
Fuel Type: Diesel

PHOTOS









CONTACTS

Andrey Shestakov, leading yacht broker of the sales department of Shestakov Yacht Sales Inc. Shestakov Yacht Sales Inc., the official representative of the Miami/Fort Lauderdale FL headquarters.

Contact details

Email: andrey@shestakovyachtsales.com

Web: shestakovyachtsales.com/en/

Telephones

USA: +1(954)274-4435

Office hours

Monday – Saturday: **9:00 - 21:00** EDT

Sunday: **closed**

Address



Harbour Towne Marina, 850 NE 3rd St,
STE 213, Dania, FL 33004