

MIRAGE — PRINCESS YACHTS



Builder: PRINCESS YACHTS

LOA: 64' 0" (19.51m)

Model: Motor Yacht

Beam: 16' 4" (4.98m)

Price: PRICE ON APPLICATION

Location: United States

Our experienced yacht broker, Andrey Shestakov, will help you choose and buy a yacht that best suits your needs **Mirage — PRINCESS YACHTS** from our catalogue. Presently, at Shestakov Yacht Sales Inc., we have a wide variety of yachts available on our sale's list. We also work in close contact with all the big yacht manufacturers from all over the world.

If you would like to buy a yacht **Mirage — PRINCESS YACHTS** or would like help answering any questions concerning purchasing, selling or chartering a yacht, please call **+1(954)274-4435**

TABLE OF CONTENTS

TABLE OF CONTENTS	2
SPECIFICATIONS	5
Basic Information	5
Dimensions	5
Speed, Capacities and Weight	5
Accommodations	5
Hull and Deck Information	5
Engine Information	5
DETAILED INFORMATION	6
Vessel Information	6
Exclusions	11
Disclaimer	11
PHOTOS	12
Salon	12
Salon	12
Salon	12
Salon	12
Galley	13
Salon	13
Galley	13
Galley	13
Dinette	14
Galley	14
Dinette	14
Master Stateroom	14
Master Stateroom	14
Master Stateroom	14
Master Stateroom	15

Master Stateroom	15
Master Head	15
Master Head	15
Master Head	16
Forward Stateroom	16
Forward Stateroom	16
Forward Stateroom	16
Forward Head	17
Forward Head	17
Guest Stateroom	17
Guest Head	17
Guest Head	18
Starboard Guest Stateroom	18
Starboard Guest Stateroom	18
Crew	18
Crew	19
Crew	19
Crew	19
Lower Helm	19
Lower Helm	20
Aft Deck	20
Aft Deck	20
Aft Deck	20
Flybridge	20
Flybridge	20
Flybridge	21
Flybridge	21
Flybridge	21
Flybridge	21

Flybridge	22
Flybridge	22
Flybridge	22
Bow	22
Bow	22
Bow	22
Bow	23
Engine Room	23
Engine Room	23
Engine Room	23
Engine Room	23
Engine Room	23
CONTACTS	24
Contact details	24
Telephones	24
Office hours	24
Address	24

SPECIFICATIONS

Basic Information

Category: Motor Yacht

Model Year: 2014

Country: United States

Dimensions

LOA: 64' 0" (19.51m)

Beam: 16' 4" (4.98m)

Speed, Capacities and Weight

Displacement: 69400 Pounds

Water Capacity: 200 Gallons

Fuel Capacity: 750 Gallons

Accommodations

Total Cabins: 4

Hull and Deck Information

Hull Material: Fiberglass

Engine Information

Manufacturer: Caterpillar

Model: C-18

Engine Type: Inboard

Fuel Type: Diesel

DETAILED INFORMATION

Vessel Information

Mirage is a beautifully appointed 2014 64' Princess motor yacht. Her 4 stateroom configuration with crew quarters aft makes for a voluminous motor yacht in this size range. A large flybridge with expansive seating groups allows family and friends to gather with plenty of room. The salon is spacious and the aft deck sliding door opens all the way outboard to make a very open and airy transition from the salon to the aft deck. This US spec built boat is fully optioned out and ready to start cruising. Her CAT C-18 motors move her along nicely at 28knt cruise while only burning 84GPH. Her custom dark blue hull ensures her uniqueness at the marina and is one of a kind.

- Upgraded CAT C-18 engines 630 hours with Platinum Plus ESC
- Painted "Flag Blue" hull by American Boat Yard
- Teak Decks
- Garmin Electronics
- Hydraulic swim platform
- 4 staterooms and Crew quarters aft
- High Gloss Walnut interior
- Bow/stern thruster
- Hard top on fly bridge
- Watermaker
- High gloss teak exterior tables

Color Scheme:

- Upgraded pillow package
- Quartz leather upholstery

Deck Saloon

- U-shaped sofa with coffee table to starboard with sofa opposite
- Entertainment centre incorporating LED TV/DVD/radio/MP3 with surround sound system and with electric raise/lower mechanism for TV and also incorporating refrigerator and bottle and glass storage
- Venetian blinds, roman blinds, curtains or sunscreens to all windows and doors
- Overhead downlighters and pelmet lights
- Stainless-steel framed aft cockpit door
- Electric drop window to port side
- Dining area with table with seating for 6/7 and storage drawer below

Owner's Stateroom

- Full width stateroom with large double bed with drawers below

- Twin bedside tables
- Large wardrobe
- Mirror
- Sofa
- Dressing table
- LED TV/DVD/radio/MP3
- Shelves, drawers and storage lockers
- Downlights and individual berth lights

En-suite bathroom

- Master and Guest Heads Avonite: Kokoura
- Washbasin with mixer tap
- Separate stall shower with automatic pump-out
- Extractor fan
- Mirror
- Storage lockers

Forward Guest Cabin

- Large double bed with drawers below
- Wardrobes and shelves
- Full length mirror
- Dressing table
- Storage lockers and drawers
- Downlighters, concealed lights and individual berth lights
- Deck hatch with skylight and electric blind
- Stowage location for dinette stools (2)

En-suite bathroom

- Washbasin with mixer tap
- Separate stall shower with automatic pump-out
- Extractor fan
- Mirror
- Storage lockers

Starboard Guest Cabin

- Two single berths with storage
- Optional electrically powered sliding berths to create
- double berth
- Bedside table with storage
- Large wardrobe with hanging space and shelf storage
- Storage lockers
- Downlighters and individual berth lights

En-suite bathroom:

- Washbasin with mixer tap
- Separate stall shower with automatic pump out
- Extractor fan
- Mirror
- Storage locker
- Additional access door from passageway

Port Guest Cabin

- Two full length berths with storage below
- Wardrobe with shelf
- Storage cupboards with shelves
- Downlighters and individual berth lights

Crew Cabin

- Two full-size single berths
- Hanging and storage space
- Downlighters and individual berth lights
- Opening portholes and transom window
- Bathroom compartment with WC, separate stall
- shower and washbasin

Galley

- Galley Avonite: Aztec Brown
- Garbage disposal
- Ceramic 4-zone hob with air extractor unit
- Combination microwave/conventional oven with grill
- Twin-bowl stainless-steel sink with mixer tap
- Full height refrigerator/deep freeze (24v/240v)
- Icemaker
- Dishwasher
- Waste disposal bin
- Overhead and concealed lighting
- Drawers and storage cupboards
- Electrically operated sliding glass partition

Deck

- Additional anchor chain to total 196 ft
- Dinghy chocks on bathing platform
- Teak-laid transom platform, cockpit deck, flybridge, flybridge stairway and stairs to side deck

- Reversible electric anchor winch with foredeck, main helm and flybridge controls
- Stemhead roller with automatic anchor launch and retrieve
- Self-stowing 40kg/88lbs Delta anchor with 40m of chain
- Twin electric-powered sternline mooring winches
- Bow rope stowage locker
- Bow and stern fairleads
- Freshwater deck/anchor wash
- Coach roof sunbed recess
- Stainless-steel bow, stern and spring cleats (2 pairs)
- Stainless-steel pulpit and guard rails
- Forward coachroof handrails
- Flybridge handrails
- Heavy duty white PVC rubbing band with Stainless-steel insert
- Full set of IMCO navigation lights
- Riding light
- Dual station remote control searchlight
- Twin electric horns
- Fuel and water filler

Cockpit

- Cockpit and flybridge seating in Movida Met Taupe w/ Cream inlay NEC
- Cockpit seating covers
- Self-draining
- U-shaped seating and folding leaf teak table
- Cockpit lighting
- Cockpit cover
- Stainless-steel handrails
- Teak-laid hatch on gas strut to lazarette stowage
- Transom gate to port and steps to starboard leading to bathing platform
- Teak-laid transom bathing platform with electro-hydraulic raise/lower mechanism (400kg/882lbs), foldaway swimming ladder, hot and cold shower, storage locker and deck light
- Locker housing 220/240v shore support inlets and shoreline stowage
- Liferaft stowage locker
- Rope storage locker
- Deck hatch to engine room
- Starboard hatch to optional crew/occasional cabin

Navigational Equipment

- Garmin GPSMAP 8212 Chartplotter at main helm & flybridge
- GMR604 6kw Open Array Radar
- Garmin GMI10 data repeater
- Garmin Autopilot

- Garmin VHF300 handset VHF radio
- SAT TV

Power and Drive Systems

- 5-bladed propellers in nickel aluminium bronze
- Bow thruster (170kgf) with dual-station controls
- Engine room lighting
- Engine room access hatch and ladder
- Power-assisted electro-hydraulic steering system
- Trim tabs with indicators
- Electronic engine and gear shift controls
- Engine room extractor fan with electronic time delay
- Fresh water supply point in engine room
- Dripless shaft seals

Electrical

- Buell air horns IPO electric
- Galvanic Isolator
- GFI outlet in lazarette contained within a waterproof enclosure
- Glendinning Cablemaster
- Separate washer/dryer in place of standard
- Voltage Stabilizer Transformer

Flybridge

- Dual station instruments and controls
- Double helm seat
- Full L-shaped wetbar with barbecue, sink, drawer fridge, waste bin and storage
- Large U-shaped seating area with teak table
- Raised sunbed aft with storage below
- Stereo radio, iPod/MP3 dock
- Hatch to cockpit stairway
- Wind deflector screens
- Stainless-steel handrails
- Deck-level lighting
- GRP radar arch
- Console and seat covers
- Twin matching whip aerials for VHF R/T and radio
- Bilge pump audible alarm

Additional

- GRP flybridge hardtop (including lighting)
- Bow cushions

- Bow cushion cover
- High gloss tables flybridge and cockpit
- Watermaker sea recovery 900 gpd with remote control
- SAT TV HD7 with 4 receivers and dummy dome
- Tender not included

Manufacturer Provided Description

Whether you're relaxing or entertaining, her exterior provides exceptional space and flexibility.

The flybridge creates a magnificent family entertaining space, with a large table for alfresco dining, generous seating and full wetbar with barbecue. The table in the cockpit gives you an alternative location to eat and relax. For those guests that enjoy swimming or water sports, the electro-hydraulic bathing platform can house a 3.25m jet-rib, to enable effortless launch and recovery.

Her interior is light, welcoming and impeccably finished with the finest fittings and materials. The dining area is located forward of the saloon and adjacent to the galley, turning the whole of the main deck into a highly sociable area to entertain. Highly unusual for this size of craft, her lower accommodation features four spacious cabins, three of which enjoy en-suite facilities. All are furnished to the highest of standards. You can also specify a fifth aft cabin, with twin beds and en-suite shower room, for crew or occasional guests.

Exclusions

Owner's personal belongings.

Disclaimer

The Company offers the details of this vessel or yacht in good faith but cannot guarantee or warrant the accuracy of this information nor warrant the condition of the vessel. A buyer should instruct his representatives, agents, or his surveyors, to investigate such details as the buyer desires validated. This vessel or yacht is offered subject to prior sale, price change, or withdrawal without notice.

PHOTOS



Salon



Salon



Salon



Salon



Salon



Galley



Galley

Galley



Galley



Dinette



Dinette



Master Stateroom



Master Stateroom



Master Stateroom



Master Stateroom



Master Stateroom



Master Head



Master Head



Master Head



Forward Stateroom



Forward Stateroom



Forward Stateroom



Forward Head



Forward Head



Guest Stateroom



Guest Head



Guest Head



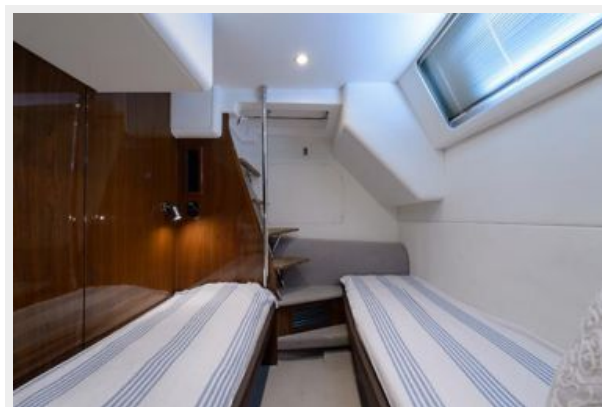
Starboard Guest Stateroom



Starboard Guest Stateroom



Crew



Crew



Crew



Crew



Lower Helm



Lower Helm



Aft Deck



Aft Deck



Aft Deck



Flybridge



Flybridge



Flybridge



Flybridge



Flybridge



Flybridge



Flybridge



Flybridge



Flybridge



Bow



Bow



Bow



Bow



Engine Room



Engine Room



Engine Room



Engine Room



Engine Room



CONTACTS

Andrey Shestakov, leading yacht broker of the sales department of Shestakov Yacht Sales Inc. Shestakov Yacht Sales Inc., the official representative of the Miami/Fort Lauderdale FL headquarters.

Contact details

Email: **andrey@shestakovyachtsales.com**

Web: shestakovyachtsales.com/en/

Telephones

USA: **+1(954)274-4435**

Office hours

Monday – Saturday: **9:00 - 21:00 EDT**

Sunday: **closed**

Address



Harbour Towne Marina, 850 NE 3rd St,
STE 213, Dania, FL 33004