

## MIRAGE — PRINCESS YACHTS



**Судостроитель:** PRINCESS YACHTS

**Модель:** Моторная яхта

**Цена:** **ЦЕНА ЯХТЫ ПО ЗАПРОСУ**

**Местонахождение:** United States

**Длина общая:** 64' 0" (19.51m)

**Ширина:** 16' 4" (4.98m)

Купить **Mirage — PRINCESS YACHTS** а также выбрать подходящую вам яхту из нашего каталога яхт вам поможет опытный яхтенный брокер Андрей Шестаков. На сегодняшний день компания **Shestakov Yacht Sales Inc.** имеет большое количество яхт в собственном списке продаж, а также тесно сотрудничает со всеми крупными яхтенными производителями по всему миру.

Для того чтобы купить яхту **Mirage — PRINCESS YACHTS** а также проконсультироваться по любому вопросу связанному с покупкой, продажей, чартером яхт позвоните по телефону **+7(918)465-66-44**.

# ОГЛАВЛЕНИЕ

|                               |    |
|-------------------------------|----|
| ОГЛАВЛЕНИЕ                    | 2  |
| ХАРАКТЕРИСТИКИ                | 5  |
| Основная информация           | 5  |
| Размеры                       | 5  |
| Скорость, вместимость и масса | 5  |
| Размещение                    | 5  |
| Корпус и палуба               | 5  |
| Информация о двигателе        | 5  |
| ПОДРОБНОЕ ОПИСАНИЕ            | 6  |
| Vessel Information            | 6  |
| Исключения                    | 11 |
| Отказ от ответственности      | 11 |
| ФОТОГРАФИИ                    | 12 |
| Salon                         | 12 |
| Salon                         | 12 |
| Salon                         | 12 |
| Salon                         | 12 |
| Galley                        | 13 |
| Salon                         | 13 |
| Galley                        | 13 |
| Galley                        | 13 |
| Dinette                       | 14 |
| Galley                        | 14 |
| Dinette                       | 14 |
| Master Stateroom              | 14 |
| Master Stateroom              | 14 |
| Master Stateroom              | 14 |
| Master Stateroom              | 15 |

|                           |    |
|---------------------------|----|
| Master Stateroom          | 15 |
| Master Head               | 15 |
| Master Head               | 15 |
| Master Head               | 16 |
| Forward Stateroom         | 16 |
| Forward Stateroom         | 16 |
| Forward Stateroom         | 16 |
| Forward Head              | 17 |
| Forward Head              | 17 |
| Guest Stateroom           | 17 |
| Guest Head                | 17 |
| Guest Head                | 18 |
| Starboard Guest Stateroom | 18 |
| Starboard Guest Stateroom | 18 |
| Crew                      | 18 |
| Crew                      | 19 |
| Crew                      | 19 |
| Crew                      | 19 |
| Lower Helm                | 19 |
| Lower Helm                | 20 |
| Aft Deck                  | 20 |
| Aft Deck                  | 20 |
| Aft Deck                  | 20 |
| Flybridge                 | 20 |
| Flybridge                 | 20 |
| Flybridge                 | 21 |
| Flybridge                 | 21 |
| Flybridge                 | 21 |
| Flybridge                 | 21 |

---

|                       |    |
|-----------------------|----|
| Flybridge             | 22 |
| Flybridge             | 22 |
| Flybridge             | 22 |
| Bow                   | 22 |
| Bow                   | 22 |
| Bow                   | 22 |
| Bow                   | 23 |
| Engine Room           | 23 |
| Engine Room           | 23 |
| Engine Room           | 23 |
| Engine Room           | 23 |
| Engine Room           | 23 |
| КОНТАКТЫ              | 24 |
| Контактная информация | 24 |
| Телефоны              | 24 |
| Время работы          | 24 |
| Адрес                 | 24 |

# ХАРАКТЕРИСТИКИ

## Основная информация

Тип судна: Моторная яхта

Модельный год: 2014

Страна: United States

## Размеры

Длина общая: 64' 0" (19.51m)

Ширина: 16' 4" (4.98m)

## Скорость, вместимость и масса

Водоизмещение: 69400 Pounds

Вместимость воды: 200 Gallons

Объем топливного бака: 750 Gallons

## Размещение

Всего кают: 4

## Корпус и палуба

Материал корпуса: Fiberglass

## Информация о двигателе

Производитель: Caterpillar

Модель: C-18

Тип двигателя: Inboard

Тип топлива: Diesel

# ПОДРОБНОЕ ОПИСАНИЕ

## Vessel Information

Mirage is a beautifully appointed 2014 64' Princess motor yacht. Her 4 stateroom configuration with crew quarters aft makes for a voluminous motor yacht in this size range. A large flybridge with expansive seating groups allows family and friends to gather with plenty of room. The salon is spacious and the aft deck sliding door opens all the way outboard to make a very open and airy transition from the salon to the aft deck. This US spec built boat is fully optioned out and ready to start cruising. Her CAT C-18 motors move her along nicely at 28knt cruise while only burning 84GPH. Her custom dark blue hull ensures her uniqueness at the marina and is one of a kind.

- Upgraded CAT C-18 engines 630 hours with Platinum Plus ESC
- Painted "Flag Blue" hull by American Boat Yard
- Teak Decks
- Garmin Electronics
- Hydraulic swim platform
- 4 staterooms and Crew quarters aft
- High Gloss Walnut interior
- Bow/stern thruster
- Hard top on fly bridge
- Watermaker
- High gloss teak exterior tables

### Color Scheme:

- Upgraded pillow package
- Quartz leather upholstery

### Deck Saloon

- U-shaped sofa with coffee table to starboard with sofa opposite
- Entertainment centre incorporating LED TV/DVD/radio/MP3 with surround sound system and with electric raise/lower mechanism for TV and also incorporating refrigerator and bottle and glass storage
- Venetian blinds, roman blinds, curtains or sunscreens to all windows and doors
- Overhead downlighters and pelmet lights
- Stainless-steel framed aft cockpit door
- Electric drop window to port side
- Dining area with table with seating for 6/7 and storage drawer below

### Owner's Stateroom

- Full width stateroom with large double bed with drawers below

- Twin bedside tables
- Large wardrobe
- Mirror
- Sofa
- Dressing table
- LED TV/DVD/radio/MP3
- Shelves, drawers and storage lockers
- Downlights and individual berth lights

### **En-suite bathroom**

- Master and Guest Heads Avonite: Kokoura
- Washbasin with mixer tap
- Separate stall shower with automatic pump-out
- Extractor fan
- Mirror
- Storage lockers

### **Forward Guest Cabin**

- Large double bed with drawers below
- Wardrobes and shelves
- Full length mirror
- Dressing table
- Storage lockers and drawers
- Downlighters, concealed lights and individual berth lights
- Deck hatch with skylight and electric blind
- Stowage location for dinette stools (2)

### **En-suite bathroom**

- Washbasin with mixer tap
- Separate stall shower with automatic pump-out
- Extractor fan
- Mirror
- Storage lockers

### **Starboard Guest Cabin**

- Two single berths with storage
- Optional electrically powered sliding berths to create
- double berth
- Bedside table with storage
- Large wardrobe with hanging space and shelf storage
- Storage lockers
- Downlighters and individual berth lights

## En-suite bathroom:

- Washbasin with mixer tap
- Separate stall shower with automatic pump out
- Extractor fan
- Mirror
- Storage locker
- Additional access door from passageway

## Port Guest Cabin

- Two full length berths with storage below
- Wardrobe with shelf
- Storage cupboards with shelves
- Downlighters and individual berth lights

## Crew Cabin

- Two full-size single berths
- Hanging and storage space
- Downlighters and individual berth lights
- Opening portholes and transom window
- Bathroom compartment with WC, separate stall
- shower and washbasin

## Galley

- Galley Avonite: Aztec Brown
- Garbage disposal
- Ceramic 4-zone hob with air extractor unit
- Combination microwave/conventional oven with grill
- Twin-bowl stainless-steel sink with mixer tap
- Full height refrigerator/deep freeze (24v/240v)
- Icemaker
- Dishwasher
- Waste disposal bin
- Overhead and concealed lighting
- Drawers and storage cupboards
- Electrically operated sliding glass partition

## Deck

- Additional anchor chain to total 196 ft
- Dinghy chocks on bathing platform
- Teak-laid transom platform, cockpit deck, flybridge, flybridge stairway and stairs to side deck



- Reversible electric anchor winch with foredeck, main helm and flybridge controls
- Stemhead roller with automatic anchor launch and retrieve
- Self-stowing 40kg/88lbs Delta anchor with 40m of chain
- Twin electric-powered sternline mooring winches
- Bow rope stowage locker
- Bow and stern fairleads
- Freshwater deck/anchor wash
- Coach roof sunbed recess
- Stainless-steel bow, stern and spring cleats (2 pairs)
- Stainless-steel pulpit and guard rails
- Forward coachroof handrails
- Flybridge handrails
- Heavy duty white PVC rubbing band with Stainless-steel insert
- Full set of IMCO navigation lights
- Riding light
- Dual station remote control searchlight
- Twin electric horns
- Fuel and water filler

## Cockpit

- Cockpit and flybridge seating in Movida Met Taupe w/ Cream inlay NEC
- Cockpit seating covers
- Self-draining
- U-shaped seating and folding leaf teak table
- Cockpit lighting
- Cockpit cover
- Stainless-steel handrails
- Teak-laid hatch on gas strut to lazarette stowage
- Transom gate to port and steps to starboard leading to bathing platform
- Teak-laid transom bathing platform with electro-hydraulic raise/lower mechanism (400kg/882lbs), foldaway swimming ladder, hot and cold shower, storage locker and deck light
- Locker housing 220/240v shore support inlets and shoreline stowage
- Liferaft stowage locker
- Rope storage locker
- Deck hatch to engine room
- Starboard hatch to optional crew/occasional cabin

## Navigational Equipment

- Garmin GPSMAP 8212 Chartplotter at main helm & flybridge
- GMR604 6kw Open Array Radar
- Garmin GMI10 data repeater
- Garmin Autopilot

- Garmin VHF300 handset VHF radio
- SAT TV

## Power and Drive Systems

- 5-bladed propellers in nickel aluminium bronze
- Bow thruster (170kgf) with dual-station controls
- Engine room lighting
- Engine room access hatch and ladder
- Power-assisted electro-hydraulic steering system
- Trim tabs with indicators
- Electronic engine and gear shift controls
- Engine room extractor fan with electronic time delay
- Fresh water supply point in engine room
- Dripless shaft seals

## Electrical

- Buell air horns IPO electric
- Galvanic Isolator
- GFI outlet in lazarette contained within a waterproof enclosure
- Glendinning Cablemaster
- Separate washer/dryer in place of standard
- Voltage Stabilizer Transformer

## Flybridge

- Dual station instruments and controls
- Double helm seat
- Full L-shaped wetbar with barbecue, sink, drawer fridge, waste bin and storage
- Large U-shaped seating area with teak table
- Raised sunbed aft with storage below
- Stereo radio, iPod/MP3 dock
- Hatch to cockpit stairway
- Wind deflector screens
- Stainless-steel handrails
- Deck-level lighting
- GRP radar arch
- Console and seat covers
- Twin matching whip aerials for VHF R/T and radio
- Bilge pump audible alarm

## Additional

- GRP flybridge hardtop (including lighting)
- Bow cushions

- Bow cushion cover
- High gloss tables flybridge and cockpit
- Watermaker sea recovery 900 gpd with remote control
- SAT TV HD7 with 4 receivers and dummy dome
- Tender not included

### Manufacturer Provided Description

Whether you're relaxing or entertaining, her exterior provides exceptional space and flexibility.

The flybridge creates a magnificent family entertaining space, with a large table for alfresco dining, generous seating and full wetbar with barbecue. The table in the cockpit gives you an alternative location to eat and relax. For those guests that enjoy swimming or water sports, the electro-hydraulic bathing platform can house a 3.25m jet-rib, to enable effortless launch and recovery.

Her interior is light, welcoming and impeccably finished with the finest fittings and materials. The dining area is located forward of the saloon and adjacent to the galley, turning the whole of the main deck into a highly sociable area to entertain. Highly unusual for this size of craft, her lower accommodation features four spacious cabins, three of which enjoy en-suite facilities. All are furnished to the highest of standards. You can also specify a fifth aft cabin, with twin beds and en-suite shower room, for crew or occasional guests.

---

## Исключения

При продаже яхты исключаются личные вещи владельца.

---

## Отказ от ответственности

Компания предоставляет описание судна или яхты добросовестно, но не может гарантировать точность этой информации, а также не ручается за техническое состояние. Покупатель должен проинструктировать своих агентов или оценщиков исследовать представленную информацию более подробно, по собственному желанию. Продажа судна или яхты, изменение цены или снятие с продажи будет происходить без предварительного уведомления.

# ФОТОГРАФИИ



Salon



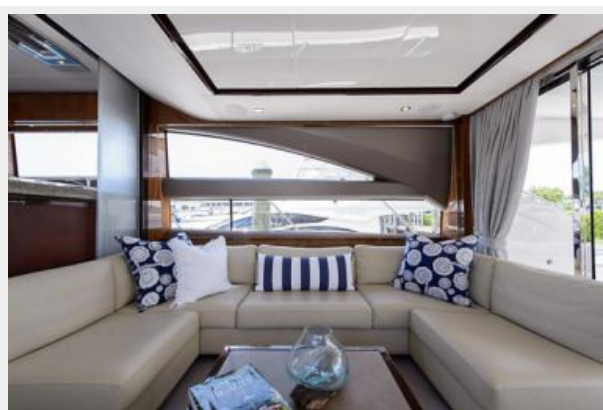
Salon



Salon



Salon



Salon



Galley



Galley

Galley



**Galley**



**Dinette**



**Dinette**



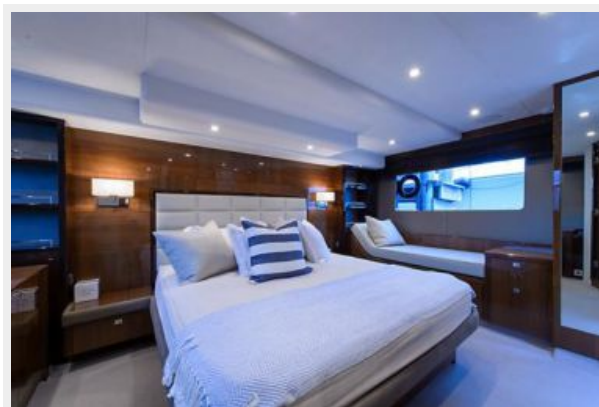
**Master Stateroom**



**Master Stateroom**



**Master Stateroom**



**Master Stateroom**



**Master Stateroom**



**Master Head**



**Master Head**



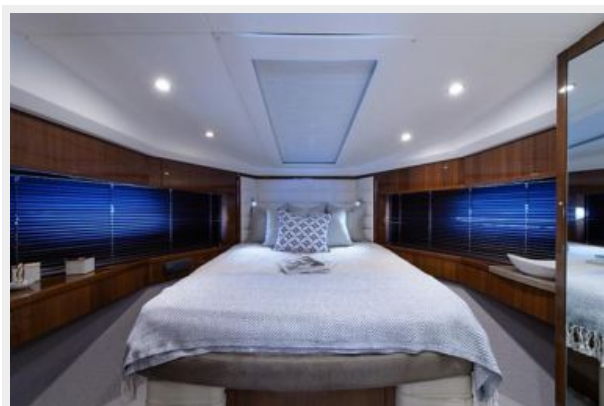
**Master Head**



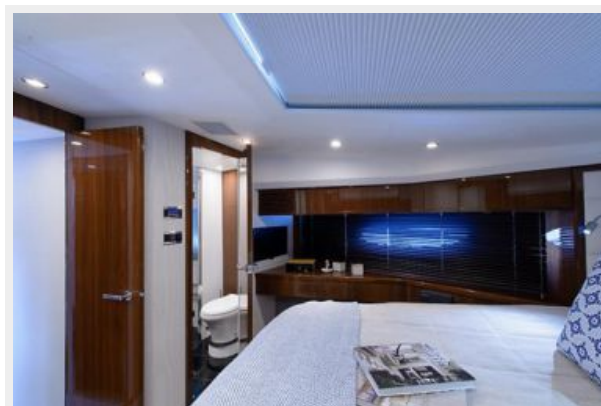
**Forward Stateroom**



**Forward Stateroom**



**Forward Stateroom**





**Forward Head**



**Forward Head**



**Guest Stateroom**



**Guest Head**



**Guest Head**



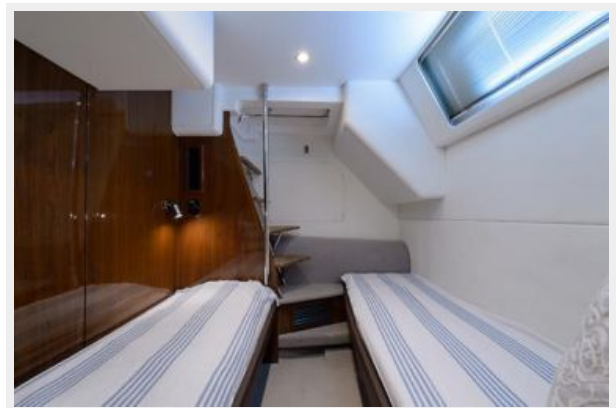
**Starboard Guest Stateroom**



**Starboard Guest Stateroom**



**Crew**



Crew



Crew



Crew



Lower Helm



**Lower Helm**



**Aft Deck**



**Aft Deck**



**Aft Deck**



**Flybridge**



**Flybridge**



**Flybridge**



**Flybridge**



**Flybridge**



**Flybridge**



**Flybridge**



**Flybridge**



**Flybridge**



**Bow**



**Bow**



**Bow**



**Bow**



**Engine Room**



**Engine Room**



**Engine Room**



**Engine Room**



**Engine Room**



# КОНТАКТЫ

---

Андрей Шестаков (Andrey Shestakov) – ведущий яхтенный брокер отдела продаж яхт и судов компании Shestakov Yacht Sales Inc. Официальный представитель Shestakov Yacht Sales Inc. для русскоговорящих клиентов в центральном офисе компании в Майами/Форт Лодердейл/Флорида/США.

## Контактная информация

---

Email: [andrey@shestakovyachtsales.com](mailto:andrey@shestakovyachtsales.com)

Web: [shestakovyachtsales.com](http://shestakovyachtsales.com)

## Телефоны

---

Краснодарский край: **+7(918)465-66-44**

США, Майами, Флорида: **+1(954)274-4435**

## Время работы

---

Понедельник – Суббота: **9:00 - 21:00**  
EDT

Воскресенье: **Закрито**

## Адрес

---



Harbour Towne Marina, 850 NE 3rd St,  
STE 213, Dania, FL 33004