

## AZIMUT 68S — AZIMUT



**Builder:** [AZIMUT](#)

**Year Built:** 2010

**Model:** Motor Yacht

**Price:** PRICE ON APPLICATION

**Location:** United States

**LOA:** 68' 0" (20.73m)

**Beam:** 17' 1" (5.21m)

**Max Draft:** 5' 4" (1.63m)

**Cruise Speed:** 33 Kts. (38 MPH)

**Max Speed:** 37 Kts. (43 MPH)

Our experienced yacht broker, Andrey Shestakov, will help you choose and buy a yacht that best suits your needs **Azimut 68s — AZIMUT** from our catalogue. Presently, at Shestakov Yacht Sales Inc., we have a wide variety of yachts available on our sale's list. We also work in close contact with all the big yacht manufacturers from all over the world.

If you would like to buy a yacht **Azimut 68s — AZIMUT** or would like help answering any questions concerning purchasing, selling or chartering a yacht, please call **+1(954)274-4435**

---

# TABLE OF CONTENTS

---

TABLE OF CONTENTS	2
SPECIFICATIONS	3
Basic Information	3
Dimensions	3
Speed, Capacities and Weight	3
Accommodations	3
Hull and Deck Information	3
Engine Information	4
DETAILED INFORMATION	5
Accommodations	5
Exclusions	9
Disclaimer	9
PHOTOS	10
CONTACTS	29
Contact details	29
Telephones	29
Office hours	29
Address	29

---

# SPECIFICATIONS

---

## Basic Information

---

**Category:** Motor Yacht

**Sub Category:** Cruiser

**Model Year:** 2010

**Year Built:** 2010

**Country:** United States

**Vessel Top:** Electronic Sunroof

## Dimensions

---

**LOA:** 68' 0" (20.73m)

**Beam:** 17' 1" (5.21m)

**Max Draft:** 5' 4" (1.63m)

## Speed, Capacities and Weight

---

**Cruise Speed:** 33 Kts. (38 MPH)

**Max Speed:** 37 Kts. (43 MPH)

**Gross Tonnage:** 32 Pounds

**Water Capacity:** 251 Gallons

**Fuel Capacity:** 845 Gallons

## Accommodations

---

**Total Cabins:** 3

**Crew Cabin:** 1

## Hull and Deck Information

---

**Hull Material:** Fiberglass

---

## Engine Information

---

**Engines:** 2

**Manufacturer:** MAN

**Model:** 12v CRM

**Engine Type:** Inboard

**Fuel Type:** Diesel

---

# DETAILED INFORMATION

---

## Accommodations

---

### Cockpit

- Full Teak Cockpit
- Retractable Cockpit Bimini Sun Shade
- Cockpit Sink
- Cockpit Grill
- Cockpit Refrigerator
- Access to Crew Quarters
- Storage Lockers
- Large Aft Sun Lounge with Seating/Head Rests
- Sun Pad Covers
- Swim Ladder
- Transom Passarelle

### Deck

- Teak Cockpit
- Teak Gangways
- Teak Lifting Swim Platform
- Tender Garage; 9' Caribe Dinghy 15HP Yamaha Enduro
- Opacmare Gangway/ Passarelle
- Glendenning Shorepower ( 50 AMP)
- Stainless Steel Bow and Side Rails
- Quick Windlass System
- Quick Winches (Port & Starboard)
- Hard Top Sun Roof Covers
- Sunpads Located at Bow and Cockpit (new pads and cover)
- 6 Cleats

### Helm

- Man Twin Digital Display
- Richie Compass

- Raymarine E80
- Raymarine GPS
- Raymarine Radar
- Raymarine Autopilot
- Raymarine Depthsounder
- Raymarine VHF Radio
- Sea Energy Joystick Controls
- Jabsco Searchlight

### **Guest Stateroom**

- Side by Side Berths
- Satellite TV
- 17' Sony Flatscreen TV/ W DVD Player
- Closet
- Entrance to Head
- Cruiser A/C Controls

### **Guest Head**

- Techma Head
- Shower
- Wenge Wood Floors
- Glass Sink

### **VIP Stateroom**

- Center Line Queen Berth
- 22' Sony LCD Flatscreen TV
- 2 Opening Portholes
- Private Entrance to Head
- Closet
- Reading Light
- Storage Underneath Berth
- Cruiser A/C Controls

## VIP Head

- Private Head
- Techma Head
- Shower Stall
- Glass Sink
- Wenge Wood Floors

## Master Head

- Large Separate Stall Shower
- Techma Head
- Wenge Wood Floors
- Glass Sink

## Master Suite

- Full Beam Master
- Queen Bed to Port
- 32' Sony Flatscreen HD TV W/ DVD
- Sony DVD Player
- Breakfast Table with Seating
- 2 Closets
- Reading Lamps
- Mohura Safebox in Stateroom Locker
- Square Windows to Port / Starboard
- Cruiser A/C Control

## Galley

- Refrigerator with Freezer
- Microwave Oven

- Scott Cerean 4 Burner Stove Top
- Stainless Steel Counter Tops
- Double Stainless Steel Sink
- Wenge Wood Floors
- Wenge Wood Cabinets
- Opening Porthole

## Main Salon

- Dinette Seating Area
- Sofa on Portside with Pouf
- Retractable Sun Roof
- Wenge Wood Floors
- 37" Flat Screen TV with Retractable Table Mount with Rotation
- Stereo System
- DVD Player

## Accommodations

- Carpeting
- Drapes
- Cushions
- Dinette
- Sofa
- Table

## Engine

- Twin 1360HP Man Diesel Engines
- 22KW Kohler Generator
- 12v/24v DC/ 110v AC Electrical System
- Seafire Halon System
- Dual Racor System



---

## Exclusions

---

Owner's personal belongings.

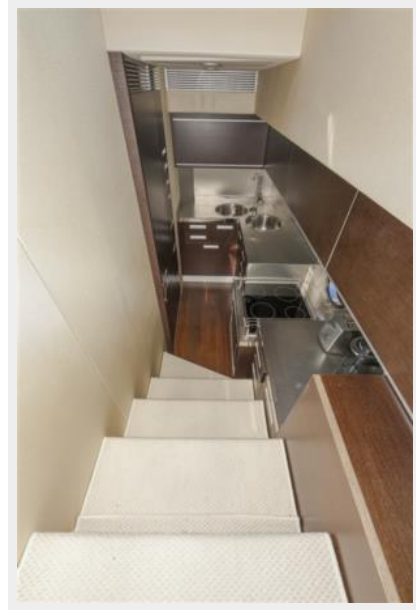
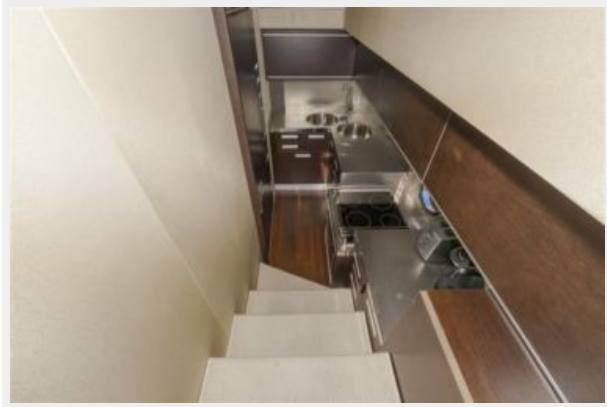
---

## Disclaimer

---

The Company offers the details of this vessel or yacht in good faith but cannot guarantee or warrant the accuracy of this information nor warrant the condition of the vessel. A buyer should instruct his representatives, agents, or his surveyors, to investigate such details as the buyer desires validated. This vessel or yacht is offered subject to prior sale, price change, or withdrawal without notice.

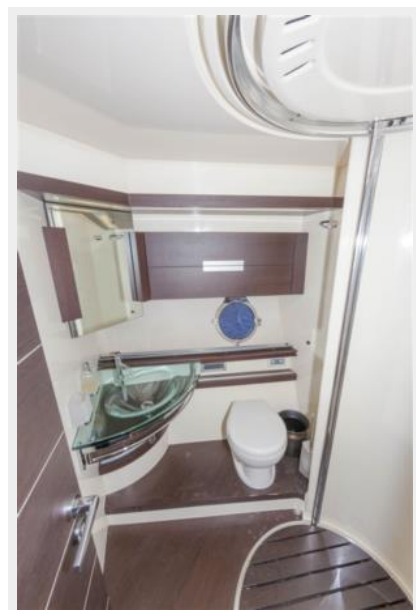
# PHOTOS





























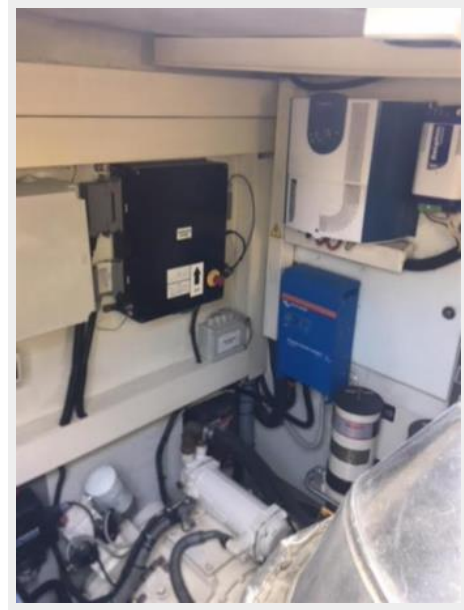














---

# CONTACTS

---

Andrey Shestakov, leading yacht broker of the sales department of Shestakov Yacht Sales Inc. Shestakov Yacht Sales Inc., the official representative of the Miami/Fort Lauderdale FL headquarters.

---

## Contact details

---

Email: [andrey@shestakovyachtsales.com](mailto:andrey@shestakovyachtsales.com)

Web: [shestakovyachtsales.com/en/](http://shestakovyachtsales.com/en/)

---

## Telephones

---

USA: +1(954)274-4435

---

## Office hours

---

Monday – Saturday: **9:00 - 21:00** EDT

Sunday: **closed**

---

## Address

---



Harbour Towne Marina, 850 NE 3rd St,  
STE 213, Dania, FL 33004