

FALCON



Year Built: 1961

Model: Motor Yacht

Price: PRICE ON APPLICATION

LOA: 90' 7" (27.6mm)

Beam: 24.6

Max Draft: 6' 10" (2.08mm)

Cruise Speed: 12 Knots Kts. (14 MPH)

Max Speed: 15 Knots Kts. (17 MPH)

Our experienced yacht broker, Andrey Shestakov, will help you choose and buy a yacht that best suits your needs **FALCON** — n/a from our catalogue. Presently, at **Shestakov Yacht Sales Inc.**, we have a wide variety of yachts available on our sale's list. We also work in close contact with all the big yacht manufacturers from all over the world.

If you would like to buy a yacht **FALCON** — n/a or would like help answering any questions concerning purchasing, selling or chartering a yacht, please call **+1(954)274-4435**

TABLE OF CONTENTS

TABLE OF CONTENTS	2
SPECIFICATIONS	3
Overview	3
Basic Information	3
Dimensions	3
Speed, Capacities and Weight	3
Accommodations	3
Hull and Deck Information	4
Engine Information	4
PHOTOS	5
CONTACTS	7
Contact details	7
Telephones	7
Office hours	7
Address	7

SPECIFICATIONS

Overview

MV FALCON was converted to a yacht between 1996 and 1998 at a cost exceeding \$ 8,000,000. She offers exceptional space and volume for a yacht of her size, with all the comforts of a home on the water. Very capable and seaworthy hull, fully stripped down and fibreglass sheathed to Germanischer Lloyds standards. New MAK 800 Hp diesels were fitted and, the yacht has been maintained regardless of cost and offered in excellent condition throughout. She offers 3 spacious guest cabins, including on deck master with Kingsize bed, very large saloon with Bang & Olufsen entertainment equipment, superb galley, huge outdoor areas with covered aft deck with seating for 10 and enormous walk in lazarette, straight from a “megayacht sized” bathing platform. This is a true “live aboard” yacht with serious cruising capabilities.

Basic Information

Category: Motor Yacht

Model Year: 1961

Year Built: 1961

Dimensions

LOA: 90' 7" (27.6mm)

LWL: 80' 5" (24.5mm)

Beam: 24.6

Max Draft: 6' 10" (2.08mm)

Speed, Capacities and Weight

Cruise Speed: 12 Knots Kts. (14 MPH) **Max Speed:** 15 Knots Kts. (17 MPH)

Accommodations

Total Cabins: 3

Hull and Deck Information

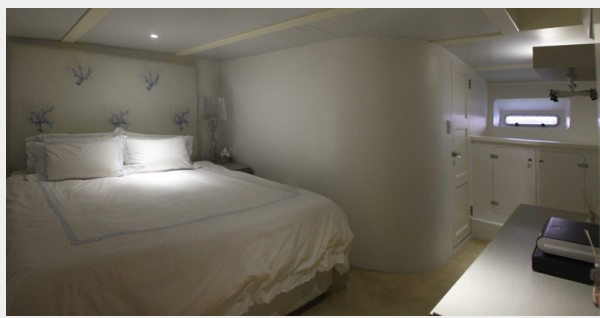
Hull Material: Fiberglass Over Wood

Engine Information

Engines: 2

Manufacturer: MAK

PHOTOS





CONTACTS

Andrey Shestakov, leading yacht broker of the sales department of Shestakov Yacht Sales Inc. Shestakov Yacht Sales Inc., the official representative of the Miami/Fort Lauderdale FL headquarters.

Contact details

Email: **andrey@shestakovyachtsales.com**

Web: shestakovyachtsales.com/en/

Telephones

USA: **+1(954)274-4435**

Office hours

Monday – Saturday: **9:00 - 21:00** EDT

Sunday: **closed**

Address



Harbour Towne Marina, 850 NE 3rd St, STE 213, Dania, FL 33004