

OASIS — WESTPORT



Судостроитель: WESTPORT

Год постройки: 2006

Модель: Моторная яхта

Цена: **ЦЕНА ЯХТЫ ПО ЗАПРОСУ**

Местонахождение: United States

Длина общая: 112' 0" (34.14m)

Ширина: 23' 0" (7.01m)

Мин. осадка: 5' 6" (1.68m)

Крейс. скорость: 21 Kts. (24 MPH)

Макс. скорость: 26 Kts. (30 MPH)

Купить **OASIS — WESTPORT** а также выбрать подходящую вам яхту из нашего каталога яхт вам поможет опытный яхтенный брокер Андрей Шестаков. На сегодняшний день компания **Shestakov Yacht Sales Inc.** имеет большое количество яхт в **собственном списке продаж**, а также тесно сотрудничает со всеми крупными яхтенными производителями по всему миру.

Для того чтобы купить яхту **OASIS — WESTPORT** а также проконсультироваться по любому вопросу связанному с покупкой, продажей, чартером яхт позвоните по телефону **+7(918)465-66-44**.

ОГЛАВЛЕНИЕ

ОГЛАВЛЕНИЕ	2
ХАРАКТЕРИСТИКИ	4
Основная информация	4
Размеры	4
Скорость, вместимость и масса	4
Размещение	4
Корпус и палуба	5
Информация о двигателе	5
ПОДРОБНОЕ ОПИСАНИЕ	6
Vessel Walkthrough	6
Recent Upgrades	6
Master Stateroom	7
Master Head	7
Forward Guest Stateroom	7
Port Guest Stateroom	8
Starboard Guest Stateroom	8
Galley and Laundry Equipment	8
Entertainment Systems	9
Navigation System	9
Machinery	10
Tenders and Toys	11
Deck Equipment	11
Security, Fire Fighting and Safety Equipment	11
Remarks	12
Исключения	12
Отказ от ответственности	12
ФОТОГРАФИИ	13
Aft Deck	13

Salon	13
Dining	13
Salon	13
Dining	13
Galley Dining	13
Galley	14
Galley	14
Master Stateroom	14
VIP Stateroom	14
Flybridge	14
Flybridge	14
Flybridge Sette	15
Flybridge Bar	15
Flybridge Settee	15
Flybridge	15
Foredeck	15
КОНТАКТЫ	17
Контактная информация	17
Телефоны	17
Время работы	17
Адрес	17

ХАРАКТЕРИСТИКИ

Основная информация

Тип судна: Моторная яхта

Подкатегория: Raised Pilothouse

Модельный год: 2006

Год постройки: 2006

Год обновления: 2014

Страна: United States

Размеры

Длина общая: 112' 0" (34.14m)

Ширина: 23' 0" (7.01m)

Мин. осадка: 5' 6" (1.68m)

Скорость, вместимость и масса

Крейс. скорость: 21 Kts. (24 MPH)

Крейсерская скорость поворота: 2100 Kts.

Макс. скорость: 26 Kts. (30 MPH)

Водоизмещение: 258000 Pounds

Вместимость воды: 1025 Gallons

Вместимость сточного бака: 600 Gallons

Объем топливного бака: 5500 Gallons

Размещение

Всего кают: 4

Спальные места: 8

Всего ком. состава: 5

Каюты экипажа: 3

Койки экипажа: 4

Спальных мест экипажа: 5

Корпус и палуба

Материал корпуса: Fiberglass

Комплектация корпуса: Semi-Displacement

Информация о двигателе

Двигатели: 2

Производитель: MTU

Модель: 16V2000 M91

Тип двигателя: Inboard

Тип топлива: Diesel

ПОДРОБНОЕ ОПИСАНИЕ

Vessel Walkthrough

Oasis is an elegant 112' Westport built for a knowledgeable yachtsman. She was built with numerous factory upgrades. Incredibly luxurious, the contemporary styling creates a timeless, magnificent appeal.

Entering the aft deck from the swim platform by one of the spiral staircases, you will find a beautifully crafted high gloss teak table with a built in settee and three teak chairs. Furnished with a complete bar, an idyllic space is created to relax and enjoy the inwater activity.

As you enter through the sliding glass doors from the aft deck, a spacious salon unfolds, displaying rich satin cherry wood cabinetry and refined styling. The new décor and AV system makes for an inviting place to be. Oasis' expansive windows on each side of the salon provide unlimited views.

An elegant formal dining set, allows you to entertain eight comfortably. Forward of the dining area one can enter the boat from a side door one enter a foyer that has a day toilet. This area give access to the pilot house or one can go forward to the gourmet country style galley allows seating designed for informal meals.

Never sacrificing comfort, the country style galley features indirect lighting and cove ceilings, ensuring this galley is a place of enjoyment.

Continue forward one will find a wellappointed VIP.

One can enter the stairway from the main saloon to the master and two guest stateroom. The master stateroom offers a lavish and relaxing retreat, including a full king berth, his and her en suite tub and a beautiful marble shower, ample drawer storage and closet.

Both port and starboard staterooms each include an en suite head, wardrobe and entertainment center. The starboard guest can convert from single berth to queen berth arrangement.

The configuration of this magnificent 112', offers a variety of ways to enjoy the yachting experience. Whether it be on the forward bow, sunning on a circular settee or entertaining on the flybridge deck complete with a bar, sink, fridge, ice maker, electric grill and large TV. The boat deck offers a hot tub and additional lounging when the tender is removed. Oasis is truly a vessel to relish because she possesses all the components that elite yachting has to offer.

Recent Upgrades

- New VSat
- New teak on swim platform New Marine Air AC

- New 2x 8200 Garmin
- Complete Naiad Stabilizer service

Master Stateroom

- California King berth with innerspring mattress and upholstered headboard and recessed for lighting and two drawer storage underneath
- Recessed Halogen room lights, two (2) reading lights, two (2) table lamps for end tables Indirect rope accent lighting under berth and above soffits, special lighting outboard at hull side and overhead lights (rope lighting) above berth
- Bronze mirrors on bulkhead above headboard
- Clear mirror on inside wardrobe door
- Walkin wardrobe, lined with aromatic cedar, automatic light, stainless closet rod and cedar shelf with keeper
- (2) Nightstands with drawers
- (1) Fifteen drawer dresser
- (2) End table cabinets

Master Head

- His and her head configurations with enclosed shower and jacuzzi tub
- (2) Headhunter Royal Flush Hydro Vac toilets
- Marble shower with Grohe thermostat and Grohe fixtures, tempered glass partition between tub and shower, Eurostyle frameless tempered glass doors and chrome latches Kohler whirlpool tub with silver nickel/gold finish
- (2) Mirrored medicine cabinets, lighted makeup mirrors above each vanity, also includes (2) freestanding
- vanity stools and fixed mirrors on forward Marble tile flooring
- Recessed Halogen room lights and vanity lights Full width vanities port and starboard
- Linen lockers port and starboard Clothes hampers port and starboard

Forward Guest Stateroom

- Queen berth with upholstered headboard and custom recess for lighting and single drawer below
- Recessed Halogen room and reading lights
- Indirect rope accent lighting under berth and above soffit Bronze mirrors on forward bulkhead above headboard
- Clear full length mirror on wardrobe door
- Walkin wardrobe, lined with aromatic cedar, automatic light, stainless closet rod and cedar shelf with keeper

- 24” Round Hatch over berth
- (2) Builtin bookcases Vanity/desk
- Entertainment center with cherry doors and (4) drawer dresser below Cabinet in stairwell locker

Port Guest Stateroom

- Queen berth with innerspring mattress, upholstered headboard, custom recess for lighting and four drawer storage under
- Recessed Halogen room & reading lights, indirect rope accent lighting under berth and above soffit
- Bronze mirrors on aft bulkhead above headboard and clear full length mirror on inside wardrobe door
- Wardrobe lined with aromatic cedar, automatic light, stainless closet rod and cedar shelf with keeper
- Soffit with cherry trim for lighting
- (2) Threedrawer nightstands
- (1) Fivedrawer dresser
- Entertainment center with cherry doors and 5drawer dresser below

Starboard Guest Stateroom

- Twin berths with innerspring mattresses and upholstered headboard, custom recess for lighting and drawer storage under inboard movable berth
- Recessed Halogen room and reading lights, indirect rope accent lighting under berth and above soffit
- Bronze mirrors on aft bulkhead above headboard, clear full length mirror outside wardrobe door
- Aromatic cedar lined, with automatic light, stainless closet rod and cedar shelf with keeper
- Door solid cherry framed with Madrona burl veneer panels
- Counters recessed Madrona burl veneer top, with cherry waterfall edge Shoji screens
- Portlights opening with screen and cover Cherry trim
- Soffit with cherry trim for lighting
- Threedrawer movable nightstand
- Entertainment center with cherry doors and fivedrawer dresser below

Galley and Laundry Equipment

Main Galley Equipment

- Cooking Equipment: Wolf 5 burner induction stove, 30” Dacor convection oven with

stainless trim, Stainless steel GE microwave, GE profile space maker and convection oven, Franke Little Butler InstaHot

- 48" KitchenAid side by side refrigerator with indoor water and ice, with wood panel fronts
- Stainless steel Asko silent running dishwasher
- Stainless Kohler extra deep sink, Grohe soap dispenser, Insinkerator garbage disposal, Broan silent running trash compactor, forward bulkhead pantry storage

Crew Galley/ Mess Equipment

- GE Microwave
- Sub Zero under counter refrigerator Stainless sink

Additional Galley Equipment

- Twin Gaggenau barbeques, Upgraded Avanti fridge and Manitowec ice maker (New 11/2010), under bar sink on flybridge
- (2) Large aft deep freezers and second deep freeze in laundry room
- (2) Large wine chillers in main salon bar

Laundry Equipment

- Bosch Axxis washer/dryer in laundry center forward of salon
- GE washer/dryer in crew lounge

Entertainment Systems

Video Equipment

- Kaleidescape AV movie system 50" LCD TV in main salon
- 42" Plasma Flat Screen Panasonic TV in galley 37" Panasonic Plasma TV in Master Stateroom 20" Sharp Aquos LCD TV in VIP Stateroom 20" Sharp Aquos LDC TV in Guest Staterooms
- 50" Phototronics fold down TV from hard top on flybridge Samsung DVD player
- Crestron Control Pads for Music System Receiver for Direct TV in the Caribbean Remote access to central music server iTunes or iPad Dock

Audio Equipment

- Integra tuner/receiver
- (2) Integra Five Disc CD player Five Satellite receivers
- Surround Sound speaker system with powered subwoofer

Navigation System

- Radars: (2) Furuno Radar (with trackball) FAR 2117 w/19" LCD display and repeater on

flybridge

- Magnetic Compass: Ritchie Globe Master F600 compass in pilothouse and one B&G Model HS2000 display on flybridge
- Auto Pilot: Simrad model #AP50
- Depth Sounder: Furuno FCV – 1200 L color depth finder DS150 digital depth sounder located in Captain's quarters
- GPS: (2) Northstar 952 GPS w/color screen Control Panel: FLIR night vision control panel
- Chart System: Trans NS2400 ECS with 19" LCD display V7 VSat, New
- GPS: (2) Garmins 8200, New

Machinery

Main Engines

- (2) MTU 16V2000 M91 2000HP, 5445 hours on mains

Generators & Electricity

- (2) 65KW 1800 rpm Northern Lights generators Generator Hours: P: 13,450 / S: 13,008, recent top
- Shore Power: (2) 100 amp 480V, 3phase shore power with shore feeds with adapters that break it down to 208V 3phase and 240V single phase
- Asea World Power shore power convertor

Batteries

- Main Engine Starting: (2) 24 Volt Battery Banks Generator Starting: (2) 12 Volt Battery Banks

Air conditioning

- Marine Air air conditioner system, New

Other Machinery

- (2) Sea Recovery SRC 14002AWM
- Naiad model #353 stabilizer system with 12 sq ft fins Full service completed
- American Bow Thruster 50hp with 4 stations
- Steering System: Jastram steering with dual engine driven pumps. Four stations, pilothouse, flybridge, port and starboard wing stations on fly bridge. Stations include indicator, start/stop buttons and covers.
- Fuel Separator & Filtration: Racor 751000 MAX
- Sewage System: Complete Head Hunter treatment system for black water
- Fresh Water System: Aluminum water tanks with interior epoxy coating with 1025 gallon capacity (2) Aqua Pure water filters (2) 220V AC pumps for freshwater system

- (1) 24V DC backup pressure pump with tank
- Bilge Water Filtration: Eight remote mounted, 24V electric bilge pump with manual/automatic switches and alarms on all pumps (except the lower engine room pump and the gray water boxes)
- Emergency fixed bilge pump system includes two electric 120V AC pumps with 1 1/4" PVC lines to each major compartment with check valves and strainers
- Fuel Capacity: 5500 gallons Water Capacity: 1025 gallons Lube Oil Capacity: 60 gallons Waste Oil Capacity: 60 gallons Holding Tank: 600 gallons

Tenders and Toys

- Novurania 530DL Deluxe with black Bimini and 70hp Yamaha
- Brownie Dive Compressor with filling station on swim platform
- (2) Sea Doo jet skis

Deck Equipment

- Anchor Windlass: (2) Maxwell 4500
- Aft Warping Capstans: (2) Maxwell 2200 – both Port and Starboard
- Boat Crane and Davits: Novurania lifting bridle, Nautical Structures CEZ2000EX davit with power telescoping, lift and rotating hydraulic boom
- Nautical Structures Passerelle

Security, Fire Fighting and Safety Equipment

Security Equipment

- CCTV System: Elbex CCTV switcher model #EXS145
- Cameras: FLIR infrared 360 degree camera on top of mast (2) Elbex 12V DC hiresolution color, fixed camera on the port and starboard side decks by boarding gates, and full pan zoom tilt camera in the engine room and aft deck
- Monitors: 15" LCD monitor in Pilothouse and 3" LCD Panel view touch pad at starboard entry and crew galley/lounge
- Other: Security system on aft door, crew door, salon door, port and starboard doors. Flybridge hatch and forward guest stateroom hatch monitored for unauthorized entry

Fire Fighting Equipment

- Fire Extinguishers: FM200 engine room fire suppression system with manual and automatic controls. Small FM2000 on electrical distribution system
- Alarms: 13 smoke alarms throughout vessel. Four CO alarms in crew quarters, captain's stateroom and crew galley

Safety Equipment

- Life Rafts: Twin eightman Solas approved life ra

Remarks

Oasis is an excellent example of a well equipped and well appointed 112' Westport. She has had excellent ownership throughout her life and is found in ready to cruise condition. Oasis offers the perfect opportunity to go cruising on short notice.

Oasis proves to be the perfect boat for private or charter uses.

Исключения

При продаже яхты исключаются личные вещи владельца.

Отказ от ответственности

Компания предоставляет описание судна или яхты добросовестно, но не может гарантировать точность этой информации, а также не ручается за техническое состояние. Покупатель должен проинструктировать своих агентов или оценщиков исследовать представленную информацию более подробно, по собственному желанию. Продажа судна или яхты, изменение цены или снятие с продажи будет происходить без предварительного уведомления.

ФОТОГРАФИИ

Aft Deck



Salon



Salon



Dining



Dining



Galley Dining



Galley



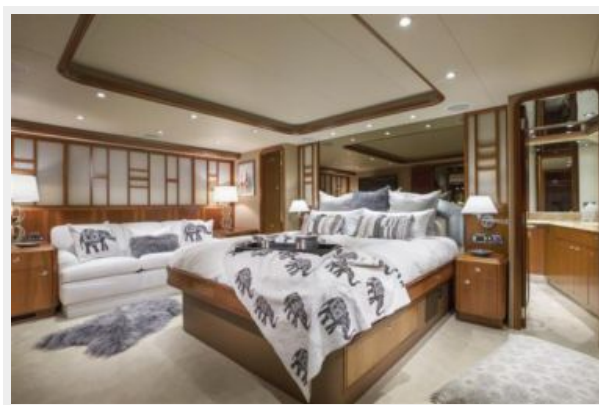
Galley



Master Stateroom



VIP Stateroom



Flybridge



Flybridge



Flybridge Sette



Flybridge Bar



Flybridge Settee

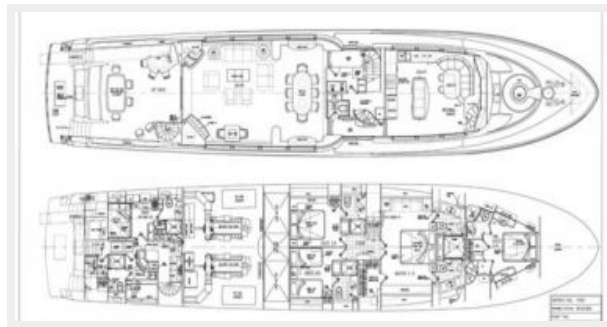
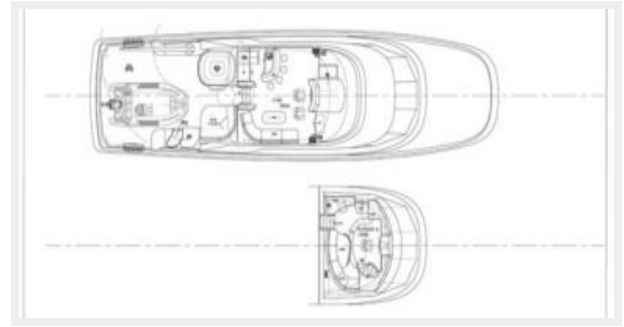


Flybridge



Foredeck





КОНТАКТЫ

Андрей Шестаков (Andrey Shestakov) – ведущий яхтенный брокер отдела продаж яхт и судов компании Shestakov Yacht Sales Inc. Официальный представитель Shestakov Yacht Sales Inc. для русскоговорящих клиентов в центральном офисе компании в Майами/Форт Лодердейл/Флорида/США.

Контактная информация

Email: andrey@shestakovyachtsales.com

Web: shestakovyachtsales.com

Телефоны

Краснодарский край: **+7(918)465-66-44**

США, Майами, Флорида: **+1(954)274-4435**

Время работы

Понедельник – Суббота: **9:00 - 21:00**
EDT

Воскресенье: **Закрето**

Адрес



Harbour Towne Marina, 850 NE 3rd St,
STE 213, Dania, FL 33004