

## ARTEMY — AZIMUT



**Судостроитель:** [AZIMUT](#)

**Год постройки:** 2008

**Модель:** Моторная яхта

**Цена:** **ЦЕНА ЯХТЫ ПО ЗАПРОСУ**

**Местонахождение:** Croatia

**Длина общая:** 116' 2" (35.40m)

**Ширина:** 24' 4" (7.40m)

**Макс. осадка:** 4' 8" (1.41m)

**Крейс. скорость:** 23 Kts. (26 MPH)

**Макс. скорость:** 26 Kts. (30 MPH)

Купить **ARTEMY — AZIMUT** а также выбрать подходящую вам яхту из нашего каталога яхт вам поможет опытный яхтенный брокер Андрей Шестаков. На сегодняшний день компания **Shestakov Yacht Sales Inc.** имеет большое количество яхт в собственном списке продаж, а также тесно сотрудничает со всеми крупными яхтенными производителями по всему миру.

Для того чтобы купить яхту **ARTEMY — AZIMUT** а также проконсультироваться по любому вопросу связанному с покупкой, продажей, чартером яхт позвоните по телефону **+7(918)465-66-44**.

# ОГЛАВЛЕНИЕ

ОГЛАВЛЕНИЕ	2
ХАРАКТЕРИСТИКИ	4
Обзор	4
Основная информация	4
Размеры	4
Скорость, вместимость и масса	4
Размещение	5
Корпус и палуба	5
Информация о двигателе	5
ПОДРОБНОЕ ОПИСАНИЕ	6
Accommodations	6
Electrical Equipment	6
Main machinery	6
Safety & Fire Protection	7
Entertainment	7
Communications & Navigation equipment	9
Deck Equipment	9
Galley & Laundry	10
Various equipment	10
Refit	10
Исключения	11
Отказ от ответственности	11
ФОТОГРАФИИ	12
КОНТАКТЫ	19
Контактная информация	19
Телефоны	19
Время работы	19
Адрес	19



# ХАРАКТЕРИСТИКИ

## Обзор

ARTEMY is a beautiful Azimut motor yacht 2009 model, meticulously maintained and recently refit in 2015 where her hull was completely repainted. She comes with all custom options, including TRAC Zero Speed Stabilizers, full beam master deluxe stateroom and the most spacious fly bridge on a yacht under 36m. VAT fully paid.

## Основная информация

**Тип судна:** Моторная яхта

**Подкатегория:** Flybridge

**Модельный год:** 2009

**Год постройки:** 2008

**Год обновления:** 1702

**Страна:** Croatia

**Открытая палуба мостика:** Да

## Размеры

**Длина общая:** 116' 2" (35.40m)

**Ширина:** 24' 4" (7.40m)

**Макс. осадка:** 4' 8" (1.41m)

## Скорость, вместимость и масса

**Крейс. скорость:** 23 Kts. (26 MPH)

**Макс. скорость:** 26 Kts. (30 MPH)

**Вместимость воды:** 739.6817456 Gallons

**Объем топливного бака:** 4755.096936 Gallons

## Размещение

---

**Всего кают:** 6

**Спальные места:** 12

**Каюты экипажа:** 3

**Койки экипажа:** 6

**Спальных мест экипажа:** 6

**Комм. состав экипажа:** 6

## Корпус и палуба

---

**Материал корпуса:** GRP

**Комплектация корпуса:** Planing

**Цвет корпуса:** White

**Дизайнер экстерьера:** Stefano Righini

**Дизайнер интерьера:** Carlo Galeazzi

## Информация о двигателе

---

**Двигатели:** 2

**Производитель:** MTU

**Модель:** M93

**Тип двигателя:** Inboard

**Тип топлива:** Diesel

# ПОДРОБНОЕ ОПИСАНИЕ

## Accommodations

Master cabin below deck mid-ships with separate access, walk-in wardrobe and en-suite bathroom with large bath tub

Guests: 2 x Double cabins below deck port & starboard, both with en-suite shower rooms 2 x Twin cabin below deck with en-suite shower room and Pullman berth

1 x GYM

Crew: Total 6 crew Captain's cabin (2 crew) 2 x crew cabins (4 crew)

## Electrical Equipment

Generators: 2 x 70kW Kohler Shore Power: Cantalupi Electrical System Converter: Cantalupi Electrical System Electricity: A/C electrical - 380/220 V D/C electrical - 24 V LED lights APC 750VA 230V Smart - UPS 10 000watts

**Batteries:** Group of 24V gel batteries 720Ah, for lighting, signalling, low power users Group of 24 V leaded batteries 480Ah, for main engines starter 2 x new groups of 12V gel batteries 145 Ah, for generators starter Group of 24V gel batteries 220Ah for electronics, intercom and emergency Group of 24V leaded batteries 100Ah for MTU electronics.

Battery Chargers: Automatic MasterVolt battery charger for service batteries, 100A Automatic MasterVolt battery charger for emergency batteries, 30A Automatic MasterVolt battery charger for MTU electronics batteries, 25A Automatic MasterVolt battery charger for emergency charging of main engines starter batteries, 25A Automatic Mastervolt battery charger for generators batteries, 25A Alternator on each main engine charging main engines starter sets Alternator on each generator charging generator starter batteries set Lines for 24V D.C. users, coming from main panel, are protected by magneto-thermic switches or fuses

## Main machinery

Gear Boxes: 2 x V Drive with universal joints Propellers: Nibral Propellers, diameter 1180mm Steering System: Piangiani Oil/Water Separator: Racor 500 MA Rudder Angle Indicator: Raymarine Fire/Bilge Pump: Gianneschi and Ramacciotti Bow Thruster: Hydraulic 65hp Bow Thruster Fuel Treatment System: Alfa Laval system with discharge in oil change tank Stabilizers: TRAC Zero Speed Air Conditioning: Tropical CruisAir 250,000 BTU air conditioning and brush less hair handlers in guests areas Fuel Separator & Filters: Racor 1000MA Dessalator Watermaker 280L/H Octo-Marine water softner (NEW 2015)

## Safety & Fire Protection

Safety: Smoke detector and extractor (garage) Alarms: General, cumulative, fire, 10 inflatable Solas LifeJackets, 10 hard foam Lifejackets in cabins Security: CCTV CAMERA SYSTEM DAHUA N.5 IP SPEED DOME PTZ 23X IP66 DAHUA AND NETWORK RECORDER 8CH IP – 1TB HD MEMORY Colour Dome Cameras Location: AFT DECK (2), ENGINE ROOM, TENDER GARAGE, MAST

## Entertainment

MAIN SALON N.1 KALEIDESCAPE 1U LIFE SERVER SYSTEM N.1 KAL-KPLAYER-5000 KALEIDESCAPE KPLAYER-5000 VIDEO N.1 KAL-KPLAYER-5000 KALEIDESCAPE KPLAYER-5000 MUSIC PLAYER2 N.5 CROWN AMPLIFIER CT8200 N.1 DUNE NETWORK MULTIMEDIA PLAYER N.1 SAMSUNG UE65HU7500 – 65 INCHES N.1 LIN-CLASSIK-M LINN CLASSIK MOVIE N.5 PAIRS OF SPEAKERS SONANCE – VP66R N.2 LIN-SIZMIK-10.25KUST LINN SIZMIK 10.25 KUSTOM SUBWOOFER N.1 DLI-DWL-2200AP D-LINK WIRELESS ACCESS POINT N.1 CRE-TPS-2000L CRESTRON 5" ACTIVE MATRIX COLOUR WALL MOUNTTOUCHPANEL N.2 LAN SWITCH 24 PORTS PACKAGE N.1 DSP AUDIO XILICA XP8080 N.1 SONY PLAYSTATION 4 N.1 KARAOKE SYSTEM WITH 2 MICROPHONES N.1 AUDIO MIXING TABLE ALLENHEAT N.1 AIRPORT EXTREM ACCESS POINT N.1 APPLE IPAD ACCESS TO ALL MEDIA AND AIRPLAY

RACK N.1 CRE-AV2 CRESTRON AV2 DUAL BUS CONTROL SYSTEM N.1 PW-1210RU POWER SUPPLY N.2 CRE-CNX-BIPAD8 CRESTRON PROFESSIONAL STEREO AUDIO DISTRIBUTION PROCESSOR N.1 CRE-CNX-PAD8A CRESTRON 8-SOURCE/8-ROOM STEREO AUDIO DISTRIBUTION PROCESSOR N.1 CRE-CNX-PVID8X4 CRESTRON PROFESSIONAL VIDEO DISTRIBUTION SYSTEM N.1 DUNE HD BASE 3D NETWORK MEDIA PLAYER (FOR FLYBRIDGE) N.2 AIRPORT EXTREM ACCESS POINT N.1 LAN SWITCH 24 PORTS N.1 SERVER DELL POWERAGE R220 N.1 HDMI TRANSCEIVER N.8 SATELLITE RECEIVER FRANSAT ASTON EUTELSAT HD N.1 KVH SATELITE TV ANTENA CONTROLER AND SWITCH N.1 QNAP 12TB NETWORK HARD DRIVE

WHEELHOUSE N.1 PIO-DEH-3900MP PIONEER CAR STEREO CD/MP3 W/FRONT AUX-IN FOR IPOD N.1 SPE-CRS5.2 SPEAKER CRAFT 130MM ROUND COAXIAL 50W SPEAKER PAIR N.1 CRETPS4LB CRESTRON 3.6" COLOUR WALL MOUNT TOUCHPANEL – BLACK N.1 SERVER MONITOR N.1 GSM ROUTER

AFT DECK N.1 AQI-LCD-32 AQUIVO 32" LCD WATERPROOF DISPLAY N.2 IN-DISKREET LINN DISKREET ROUND CEILING MOUNT SPEAKER PAIR N.1 CRE-CNX-B6A/B/W CRESTRON 6-BUTTON WALL-MOUNTED KEYPAD N.1 CRE-B-G1-WPK CRESTRON WATER RESISTANT COVER KIT FOR CNX-B KEYPAD N.1 APPLE IPAD ACCESS TO DUNE, KALEIDASCAPE, AND AIRPLAY

FLYBRIDGE N.1 AQ-CD-1R AQUATIC AM/FM/CD/MP3 CAR STEREO N.1 JL AUDIO

SUBWOOFER N.3 PAIRS MBQ-NKD116 MB QUART NKD-116 6.5" MARINE SPEAKER N.1  
IPAD ACCESS TO DUNE AND KALEIDASCAPE AND AIRPLAY

BOW AREA N.1 MBQ-NKD116 MB QUART NKD-116 6.5" MARINE SPEAKER PAIR N.1 POL-  
IC-3.5-PM POLYPLANAR MP3/IPOD RADIO SATELLITE ADAPTER N.1 CRE-CNX-B6A/B/W  
CRESTRON 6-BUTTON WALL-MOUNTED KEYPAD N.1 CRE-B-G1-WPK CRESTRON  
WATER RESISTANT COVER KIT FOR CNX-B KEYPAD

GYM N.1 MIR-46MIRROR-LCD MIRROR IMAGE NEW LIVING 46" MIRROR LCD TV N.3 LIN-  
DISKREET LINN DISKREET ROUND CEILING MOUNT SPEAKER PAIR N.1 LIN-SIZMIK-  
10.25 LINN SIZMIK 10.25 SUBWOOFER N.1 NAD-L73/EU NAD ELECTRONICS DVD  
RECEIVER N.1 KAL-KPLAYER-5000 KALEIDESCAPE KPLAYER-5000 MOVIE/MUSIC  
PLAYER2 N.1 AIRPORT EXPRESS ACCESS POINT

CREW MESS N.1 SAM-LE-32R86BD SAMSUNG 32" LCD HDTV READY TELEVISION N.1  
BOS-BV6000 BOSS AUDIO MOBILE DVD/MP3/CD RECEIVER N.1 PAIR SPE-CRS5.2  
SPEAKER CRAFT 130MM ROUND COAXIAL 50W SPEAKER N.1 IPAD AIR

GALLEY N.1 PIO-DEH-3900MP PIONEER CAR STEREO CD/MP3 W/FRONT AUX-IN FOR  
IPOD N.1 OEM-SC-520KE OEM 5-1/4" 2-WAY KEVLAR SPEAKER PAIR

MASTER CABIN N.1 SAMSUNG UE48HU7500 48 INCHES N.1 KAL-KPLAYER-5000  
KALEIDESCAPE KPLAYER-5000 MOVIE/MUSIC PLAYER2 N.1 INTEGRA AUDIO/VIDEO  
RECEIVER DTR30.6 N.1 DUNE HD BASE 3D NETWORK MEDIA PLAYER N.1 AIRPORT  
EXPRESS ACCESS POINT N.1 POLKAUDIO PSW 111 SUBWOOFER N.1 CRE-MP2E  
CRESTRON COMPACT CONTROL SYSTEM W/ ETHERNET N.1 INCLUDES: PW-2410RU  
POWER SUPPLY N.1 IPAD

2 x VIP CABINS N.2 SAM-LE-32R86BD SAMSUNG 32" LCD HDTV READY TELEVISION N.2  
NAD-L54/EU NAD ELECTRONICS DVD RECEIVER N.2 KAL-KPLAYER-5000  
KALEIDESCAPE KPLAYER-5000 MOVIE/MUSIC PLAYER2 N.2 PAIR LIN-DISKREET LINN  
DISKREET ROUND CEILING MOUNT SPEAKER N.2 XAN-RS41AV XANTECH IR REMOTE  
CONTROL A/V SWITCHER N.2 PAIR LIN-SWEETSPOT LINN SWEETSPOT MINI SPEAKER  
(BATHROOM) N.2 AIRPORT EXPRESS ACCESS POINT N.2 CRE-CNX-B6A/B/W  
CRESTRON 6-BUTTON WALL-MOUNTED KEYPAD ACCESS TO AIRPLAY

2 x GUEST CABINS N.2 SAM-LE-19R86 Samsung 19" Widescreen HD ready LCD TV N.2  
NAD-L54/EU NAD Electronics DVD Receiver N.2 KAL-KPLAYER-5000 Kaleidescape Kplayer-  
5000 Movie/Music Player2 N.2 LIN-DISKREET Linn Diskreet round ceiling mount Speaker PAIR  
N.2 XAN-RS41AV Xantech IR Remote Control A/V Switcher N.2 LIN-SWEETSPOT Linn  
Sweetspot mini Speaker PAIR N.2 AIRPORT EXPRESS ACCESS POINT N.2 CRE-CNX-  
B6A/B/W CRESTRON 6-BUTTON WALL-MOUNTED KEYPAD ACCESS TO AIRPLAY

CAPTAIN'S CABIN N.1 SAM-LE-19R86 Samsung 19" Widescreen HD ready LCD TV N.1 BOS-  
BV6000 Boss Audio Mobile DVD/MP3/CD Receiver N.1 OEM-SC-520KE OEM 5-1/4" 2-Way  
Kevlar Speaker PAIR



2 x CREW CABINS N.4 Boss Audio DVD w/10.4" flip down TFT Monitor N.2 PIO-DEH-3900MP Pioneer Car Stereo CD/MP3 w/front Aux-in for iPod 2 N.2 OEM-SC-520KE OEM 5-1/4" 2-Way Kevlar Speaker PAIR

## Communications & Navigation equipment

VHF 1 Sailor RT5022 DSC Class A VHF 24VDC 1 Sailor N163S 110/220 VAC to 24VDC (7A) Power Supply 1 Comrod 8' VHF Antenna 1 Procom flange 1" Deck antenna mount 1 Sailor CB5009 Connection Box for RT5022 (Bridge) 2 Sailor CU5000 Semi-intelligent Control Unit (Fly Bridge and Crew Mess) 2 Icom Waterproof VHF Marine Handheld Transceiver 6 FM transceiver ICOM PRO 1 Icom Survival Craft 2 - Way GMDSS VHF Marine Transceiver

TELEPHONE SYSTEM 1 Panasonic KX TDA30 Hybrid IP PBX Telephone System 1 Panasonic KX-TDA3180 4 Port CO Card 2 Panasonic KX-TDA0141 2 Channel Cell Station LOCATION: WHEELHOUSE 1 Panasonic KX - T7633 24 Btn Digital LCD Speakerphone - Black LOCATION: MASTER STATEROOM, MAIN SALON 2 B&O Beocom 6000 Cordless Telephone -Black LOCATION: GUEST CABINS (2), VIP CABINS (2), CREWMESS 5 B&O Beocom 1401 Wallmount Telephone -Black 1 THRANE&THRANE Iridium (Bridge)

EPIRB 1 Sailor SE406 - II Satellite EPIRB w/automatic release bracket

FLYBRIDGE 1 Furuno NavNet2 Radar/Chart plotter (24VDC) (Includes: RDP149/NT 10.4" colour LCD Display, RSB0072 - 060 Gearbox w/12 kW Transceiver, PSU005 1 Furuno XN13A 6' Open Array Antenna 1 Furuno 10 Target Auto Plotter w/ PG500R

WHEELHOUSE 1 Jakob Hatteland 404P4 Rack Computer - 220VAC 3 Jakob Hatteland 15" Display Series II XGA - Flange Version 3 Jakob Hatteland Series II Display Controller - 24VDC

1 CHARTING PC (NEW 2015) 1 RS422 IO INTERFACE (NEW 2015) 1 TRANSAS SOFTWARE NS4000 (NEW 2015) 1 TRANSAS MEDITERRANEAN CHART FOLIO (NEW 2015) 1 TRANSAS AIS PLUG-IN (NEW 2015) 1 TRANSAS ARPA PLUG-IN (NEW 2015) 2 FURUNO GP-33 GPS (NEW 2015) 1 NMEA AUTO-SWITCH INTERFACE (NEW 2015) 1 FURUNO SC-50 SAT COMPASS (NEW 2015) 1 FURUNO NAVTEX RECEIVER WITHOUT PRINTER NX-300 (NEW 2015) 1 FURUNO AIS TRANSPONDER FA-150 (NEW 2015) 1 FURUNO MULTI-FUNCTION RD-30 with FIX, Depth, Sea water Temperature (2008)

STEERING SYSTEM 1 Simrad AP50 Autopilot 1 1 Simrad AP50 Second Station Display w/15m 1 1 Simrad QS50 Joystick Controller 1 2 Simrad FU50 Follow - up Steering lever 2

## Deck Equipment

Anchor Windlass: Maxwell 6000 Aft Warping Capstans: Maxwell 3000 Passerelle & Side Ladders: Marquipt ladder/Side boarding gates/Opacmar Passerelle

ANCHORING RIG: Anchors: 2 x 180kg Chains: 2 x 125m Swimming Platform: Launching and recovering system for Jet Ski Launching and recovering system for tender Awning: 2 x Sun Roof Automatic Switch Sundeck

## Galley & Laundry

Galley: Miele Laundry: 1 x Miele Professional PW 6065 Washing Machine 1 x Miele Professional Dryer PT7136 Plus Refrigeration: Frigomar Bars: 2 x u-line Air cooled Ice maker

## Various equipment

Jacuzzi Dip Pool: Jacuzzi for 4 persons on sundeck w/separate shower Deck Furniture: 4X Teak bench (fly deck) Sunbathing mattresses (bow area) Ship Safe: 1 x Master Electric BBQ on fly bridge

Tenders: Tender equator 500, Volvo 140hp engine Diving Equipment: Full diving equipment for 4 persons Jet Skis: Yamaha GP1300 3 x SEA BOB – 2x Cayago (old) and one FS (2014) 2 Inflatable Kayacs (NEW 2015) 1 Pair of Adult water skies 1 Pair of child water skies (NEW 2015) 2x Wake Boards 2x Mountain bike (NEW 2015) 1x Thread mill TechnoGym (NEW 2015) 1x Standing Bike Techno Gym (NEW 2015) 1x Multi function fitness machine TechnoGym (NEW 2015) 1 Press Bench TechnoGym (NEW 2015)

## Refit

- MTU servicing Generator servicing – 3000 Hours servicing All cutlass bearings and complete re –alignment of the system shaft/gearbox/engines Engine bulkhead and AC compressors noise and vibration insulation Water maker and Stabilizer hydraulic pumps noise and vibration insulation Steering Rams Installation Servicing Trim Tabs Servicing Gangway overall Garage door, Hydraulic Power pack and valve block overall Main Engine raw water suction valves new Engine (2x) and service (2x) sea chest valves new Half Pump vessel rig Serviced Sea water piping full flush and cleaning Hydraulic piping network overall Dryer air duct to be changed Stabilizer pressure switches (2x) Stabilizers fins anodes New hydraulic cooling system discharge valves (x3) Toys cradle maintenance Saloon automatic doors serviced Restore communication between Port Generator and monitoring system Tender maintenance Jetski work maintenance Ceiling light repairs Watermaker servicing Jets system maintenance Compass swing New generator mounts – upgrade to high dampening capacity fluid mounts Owner’s stairs insulation New garage vent fan Service windlass Service aft cap stains Clean and mark anchor chain Water Maker High Pressure pump service Change Black and grey tank filter Replace damaged Insulation in saloon Connect Galley sink to sump box to stop smells from tanks coming into the galley Insulation under Owners Stairs New grids for ice maker ventilation New Air

ducting New Generator batteries

- Air conditioning and fridges works Maintenance Complete service of the AC production units Complete service of one chill water circulation pump (2 on board) Complete service of one sea water cooling pump (2 on board) Servicing of the three fridges compressor units Modification of the cooling capacity for the galley fridges Aft-deck Ice Maker Fan Coils (Air handlers) Install of brush less fan coils in the guest areas Cosmetic Hull and superstructure paint work New venere in crew mess' doorway and fly bridge companion way Kitchen Plan repair Bridge's Stairs Repair Engine room bilges cleaned and painted Paint Bosons locker Detail deck chairs Polishing of port holes and windows Varnish tables, bar top, and Cap rail Reseal Bathroom silicon in Guest and crew bathrooms 4 ceiling panels in the Crew area painted white Equipment New Fly Bridge shower Aft deck white mesh awning New Mixing Tap in Master's bathroom Crew beddings Garage's door fender New Inflatable Fenders Galley Hood motors and fan replaced New Crew mess sitting covers Pull up bar on the fly bridge installed for gym exercises New navigation equipment – List already updated Lifesaving appliances servicing New Tender Line and blocks Icemaker and drinking water filters to be replaced Plastic cover on floor New running machine cover Audiovisual and IT works Guest Cabins – Integration of Ipad touch controls Master Stateroom – New HD 4K TV – Dune Video on demand, new subwoofer GSM System – addition of a second antenna CCTV renewal Main Saloon DSP Install Aft Deck control modifications through Ipad Fly Bridge stand-alone zone creation with access to Dune Media Player, new subwoofer Crew mess CCTV control through Ipad Air Infra-structure modernized, network updated and made quitter, centralized in the main Rack in the corridor Install of a 12TB Network Hard drive New Server Air Play throughout the boat

- 

## Исключения

---

При продаже яхты исключаются личные вещи владельца.

## Отказ от ответственности

---

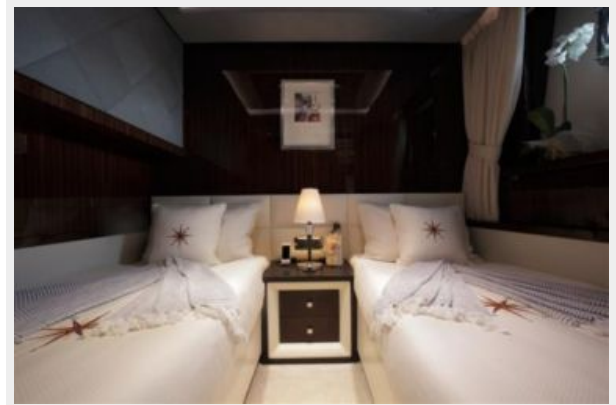
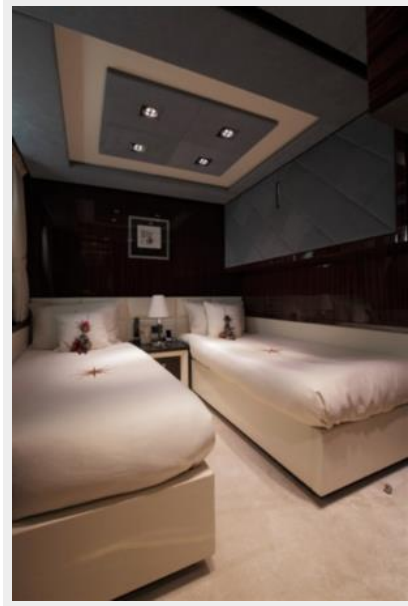
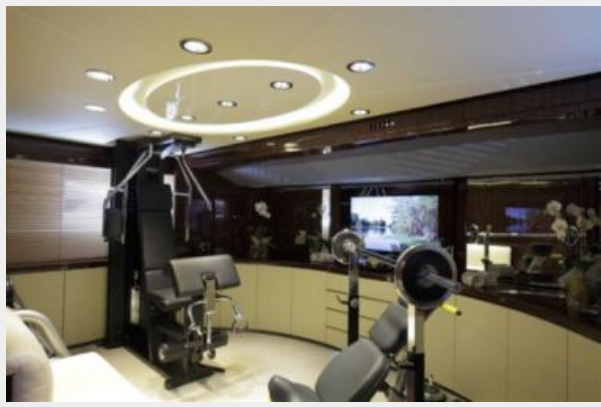
Компания предоставляет описание судна или яхты добросовестно, но не может гарантировать точность этой информации, а также не ручается за техническое состояние. Покупатель должен проинструктировать своих агентов или оценщиков исследовать представленную информацию более подробно, по собственному желанию. Продажа судна или яхты, изменение цены или снятие с продажи будет происходить без предварительного уведомления.

# ФОТОГРАФИИ



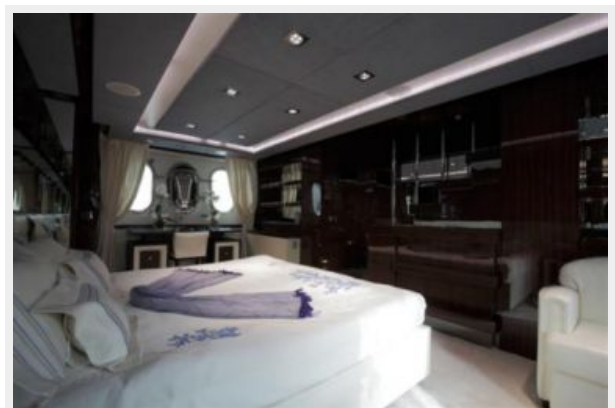














# КОНТАКТЫ

---

Андрей Шестаков (Andrey Shestakov) – ведущий яхтенный брокер отдела продаж яхт и судов компании Shestakov Yacht Sales Inc. Официальный представитель Shestakov Yacht Sales Inc. для русскоговорящих клиентов в центральном офисе компании в Майами/Форт Лодердейл/Флорида/США.

## Контактная информация

---

Email: [andrey@shestakovyachtsales.com](mailto:andrey@shestakovyachtsales.com)

Web: [shestakovyachtsales.com](http://shestakovyachtsales.com)

## Телефоны

---

Краснодарский край: **+7(918)465-66-44**

США, Майами, Флорида: **+1(954)274-4435**

## Время работы

---

Понедельник – Суббота: **9:00 - 21:00**  
EDT

Воскресенье: **Закрыто**

## Адрес

---



Harbour Towne Marina, 850 NE 3rd St,  
STE 213, Dania, FL 33004