

CAPITAN MORGAN I — PRINCESS YACHTS



Судостроитель: PRINCESS YACHTS

Год постройки: 2015

Модель: Моторная яхта

Цена: ЦЕНА ЯХТЫ ПО ЗАПРОСУ

Местонахождение: United States

Длина общая: 72' 0" (21.95m)

Ширина: 18' 0" (5.49m)

Макс. осадка: 5' 6" (1.68m)

Крейс. скорость: 28 Kts. (32 MPH)

Макс. скорость: 36 Kts. (41 MPH)

Купить Capitan Morgan I — PRINCESS YACHTS а также выбрать подходящую вам яхту из нашего каталога яхт вам поможет опытный яхтенный брокер Андрей Шестаков. На сегодняшний день компания Shestakov Yacht Sales Inc. имеет большое количество яхт в собственном списке продаж, а также тесно сотрудничает со всеми крупными яхтенными производителями по всему миру.

Для того чтобы купить яхту Capitan Morgan I — PRINCESS YACHTS а также проконсультироваться по любому вопросу связанному с покупкой, продажей, чартером яхт позвоните по телефону **+7(918)465-66-44**.

ОГЛАВЛЕНИЕ

ОГЛАВЛЕНИЕ	2
ХАРАКТЕРИСТИКИ	3
Основная информация	3
Размеры	3
Скорость, вместимость и масса	3
Размещение	3
Корпус и палуба	3
Информация о двигателе	4
ПОДРОБНОЕ ОПИСАНИЕ	5
Vessel Overview	5
Исключения	14
Отказ от ответственности	14
ФОТОГРАФИИ	15
КОНТАКТЫ	26
Контактная информация	26
Телефоны	26
Время работы	26
Адрес	26

ХАРАКТЕРИСТИКИ

Основная информация

Тип судна: Моторная яхта

Подкатегория: Flybridge

Модельный год: 2015

Год постройки: 2015

Страна: United States

Размеры

Длина общая: 72' 0" (21.95m)

Ширина: 18' 0" (5.49m)

Макс. осадка: 5' 6" (1.68m)

Скорость, вместимость и масса

Крейс. скорость: 28 Kts. (32 MPH)

Макс. скорость: 36 Kts. (41 MPH)

Водоизмещение: 96100 Pounds

Объем топливного бака: 1100 Gallons

Расход топлива: 295 Gallons

Размещение

Всего кают: 4

Всего коек: 3

Каюты экипажа: 1

Комм. состав экипажа: 1

Корпус и палуба

Материал корпуса: Fiberglass

Информация о двигателе

Двигатели: 2

Производитель: CAT

Модель: C-32A

Тип двигателя: Inboard

Тип топлива: Diesel

ПОДРОБНОЕ ОПИСАНИЕ

Vessel Overview

Combining the elegance and detail of a true motor yacht with the agility and performance of a sports cruiser.

The 72 Motor Yacht is potent, spacious and luxurious. She promises a breathtaking cruising experience whether simply enjoying a day out on the water or making the most of her long range capabilities.

Her distinctive stature effortlessly draws the eye from bow to stern, underlined by the innovative deep-V hull, a feature which also guarantees class-leading agility and performance. Naturally her flybridge is well appointed, with a large wetbar, barbecue and generous seating to while away the day. Everything to help you unwind and enjoy your guests' company to the full.

With its welcoming ambiance and homely feel, the 72 Motor Yacht is a truly inviting craft on which to spend time with friends. Light pours in through expansive windows down each side of the saloon, featuring a sociable galley that can be discreetly separated from the saloon behind an aft sliding glass screen. When evening falls, six guests are able to relax in three spacious and well-appointed cabins, whilst for the owner, a luxurious full-beam stateroom beckons. Entering CAPITAN MORGAN I's salon through the sliding glass doors, there is a settee to port with a 40" Samsung LED flat screen television on a lift. Opposite to starboard is a U-shaped settee with ottoman and table. Further forward to port is a cocktail cabinet with glass and bottle storage and a wine cooler. Also to port is a high-gloss wood dining table with L-shaped seating and four leather chairs.

Opposite to starboard is a full service galley with granite countertops and wood plank flooring. An electric-powered divider separates the galley from the salon. Forward of the galley is the helm station, separated by a divider and equipped with a complete electronic package. An electric Helmsman door accesses the starboard side deck.

Down to the stateroom area, you'll find a Port Stateroom with a twin bed and television. The Starboard Stateroom with a twin bed and automatic double bed conversion system with a television and access to the guest head. Forward in the bow is the VIP Stateroom with a centerline queen bed, Harman Kardon 2.1 stereo system and access to a private head with shower. The full-beam Master Stateroom is aft with an en-suite head and shower, port side vanity with makeup mirror, and starboard side lounge seat with end table. The Master boasts a 32" Samsung LED television and Harman Kardon 2.1 stereo, large closet and dressing area. All staterooms are equipped with a stereo and Blu-Ray system as well as a Direct TV receiver, and in closet safe.

The crew quarters is located aft, access from the swim platform, with twin berths and a full head with shower. Access to the engine room is forward through a water tight door.

Interior

- Walnut wood interior with gloss finish
- Upgraded pillows and throws

Salon

- Portside entertainment center
- Walnut wood interior with gloss finish
- Portside couch
- Harmon Kardon 5.1 Blu-ray system with Karaoke system.
- Samsung 40" LED TV retractable in cabinet
- Direct TV receiver
- Central vacuum system
- Stainless steel framed sliding salon doors
- Portside couch with pillow set and storage space
- Starboard side u-shaped sofa with storage space, with ottoman
- High-gloss wood table
- Cocktail cabinet with glass storage and refrigerator
- Wine cooler
- Overhead lighting
- Double carpet flooring (extra carpet over the main carpet)

Galley

- "Emperor dark marble" (Brown) countertops
- Dual Franke stainless steel sinks
- Grohe faucet for sink
- Blinds
- Electronic-powered divider for the galley
- Miele combination microwave/convection oven
- Waeco full-height refrigerator with freezer
- Garbage disposal
- Miele oven
- Exhaust fan
- Overhead and concealed lighting
- Storage drawers and cabinets
- Wood timber-laid flooring
- 4-Burner Miele cooktop
- Icemaker
- Silverware drawer storage, with silverware
- Plate storage drawer with china
- Overhead storage cabinets

Dinette

- Bench style leather seating with 4 leather single chairs
- High-gloss Walnut table
- Overhead lighting
- Pillow set
- Large side windows
- Raised table

Master Stateroom

- Full beam master with en-suite head
- Portside wood vanity with chair and makeup mirror
- Starboard lounge seat with end table
- Bedside tables
- Large king-size bed
- 32" Samsung flat screen LED television
- Harmon Karden 2.1 Blu-Ray system
- DVR Direct TV satellite receiver
- Full-length mirror
- Walk-through dressing area
- Overhead and individual berth lighting
- Large picture windows with opening aft section
- Large closet
- Double carpet flooring (extra carpet over the main carpet)
- Safe in closet

Master Stateroom Head

- Bianco Gioia marble worktop & floor in place of standard
- Large Perrin & Rowe dual sink vanity with glass holders
- Large shower with glass enclosure, rain shower head and hand-held shower head
- Clear glass shower enclosure
- Quietflush toilet
- Exhaust fan
- Mirrors
- Heated towel bar
- Koko white Avonite flooring
- Storage below vanity

VIP Stateroom

- Large queen bed with four large drawers below
- Large hanging locker
- Mirror
- Vanity with makeup mirror and stool
- Harman Kardon stereo system with CD player, radio, and television

- Direct TV receiver
- 22" Samsung flat screen television
- Storage lockers
- Overhead and individual berth lights
- Overhead deck hatch with blind
- Privacy door

VIP Head

- En-suite head with separate shower stall
- Vanity with Perrin & Rowe sink
- Emperador Dark marble worktop & Bianco Gioia marble floor in place of standard
- Quietflush toilet

Port Stateroom

- Twin beds with storage below
- Hanging locker
- Mirror and desk
- Overhead lighting with individual berth lights
- Bedside table
- Stereo system with CD player, radio, and television
- Direct TV receiver
- 22" Samsung flat screen television

Starboard Stateroom

- Twin beds with electric conversion system to queen berth
- Mirror and desk
- Book shelves
- Overhead storage
- Interior access to guest head
- Stereo system with CD player, radio, television
- Direct TV receiver
- 22" Samsung flat screen television

Guest Head

- Starboard guest head with shower stall
- Vanity with storage below
- Separate shower stall
- Exhaust fan
- Mirror
- Passageway door
- High-gloss wood finish
- Perrin & Rowe sink

- Glass holder
- Wood high-gloss privacy doors
- Emperador Dark marble worktop & Bianco Gioia marble floor in place of standard
- Quietflush toilet

Main Stateroom Hallway

- Two large closets with shelves for optimizing storage space.

Crew Quarters

- Twin berths
- Crew head with shower
- 22" LCD television
- Direct TV receiver
- Crew storage
- Crew access from swim platform
- Engine room access
- Hanging locker
- High-gloss wood finish

Electrical

- US electric system, 60hz including Duplex US outlets
- Central vacuum system
- Wine cooler
- Hubbell cords
- 2 x Glendinning cablemasters
- Dual station trim tabs with indicators
- Dual station searchlight
- Hot water heater
- Automatic water pump with filter
- Charles solid power PM3
- 27KW Onan generator
- 17.5KW Onana generator, auxiliary
- Sea recovery 900 gpd water maker
- 4 underwater lights under swim platform
- 2 white underwater lights in each side below main stateroom windows.

Aft Deck

- Large u-shape lounge seat in Movida Met DIAMANTE SNOW with Met CARBON inlay and Stamoid covers
- Large high-gloss finish teak folding table with beverage holders
- Teak decking
- Molded-in stairs to bridge

- Aft docking station with engine and thruster controls
- Crew quarters entry from swim platform
- Dual aft entry steps
- Line storage compartments
- Fender storage
- Fuel control panel
- 2 Lewmar electric aft rope mooring winches
- Blue LED step lighting
- Hydraulic swim platform
- Pasarelle
- Hot and cold swim platform shower
- Fusion Stereo controls with 4 JL Audio Speakers (Blue Tooth Connectivity)
- 1 JL Audio 10" Subwoofer
- Custom minibar 82 style with cup washer and top loading mini fridge
- "Yachtsings" Custom made stainless steel and LED lighted transom name and Logo
- Transom Bownie's third lung E-reel with retractable Gledinning hose outlet

Flybridge

- Portside helm
- Large folding high-gloss teak table with beverage holders
- Large u-shaped seating in Movida Met DIAMANTE SNOW with Met CARBON inlay with storage underneath
- Helm and seat covers
- Wetbar with top-loading coolbox
- Smeg lava rock barbecue
- Fusion stereo system with 2 JL Audio
- Engine room fire extinguisher warning system
- Flybridge sunbed and cushions
- Hardtop with electric retractable soft insert
- Raymarine 12" Hybrid touch navigation display
- Ray Marine VHF with remote speaker
- Plastimo offshore 105 wet compass
- Raymarine autopilot
- Bow thruster controls
- CAT LCD engine display
- White overhead lights
- Search light control
- Raised helm seat and companion seat
- 1200C Palm Beach tender with 40hp Yamaha 4-stroke engine
- Opacmare Davit
- YRM removable tender chocks, can be used in flybridge aft deck or swim platform
- Aft flybridge custom stainless steel staple rails
- Custom Canvas Designers 4 side enclosure, sliding forward 4 panels in hard plastic

Helm

- Tilt wheel
- A/C vents
- Helmsman electrically operated side door
- Beverage holders
- Lower helm divider
- Chart holder
- Instrument console with engine instruments
- Rudder position indicator
- Electronic engine controls
- Electric bow thruster control
- Map storage
- Bennet trim tab system with indicators
- Electric helm chair and companion chair
- ACR remote spotlight control
- Dual Bioning AHD 880TC system displays
- Black mesh windshield cover

Electronics

- ACR spotlight with remote
- KVH TracVision M7 satellite TV with Direct TV receiver with battery back-up, and IR remote system
- TracVision M7 dummy dome
- Dual station VHF with intercom
- Ray Marine VHF at both stations
- Raymarine e125 radar/chartplotter with GPS & 3x 12.1" brilliant color multifunctional displays (two at lower helm & one at upper helm) and 4 kW SHD 48" digital color open array scanner.
- Raymarine p70R autopilot with rate gyro and i70 color multifunction instruments (for speed, distance, trip, depth, depth alarm, water temp, etc) with dual station autopilot controls and two i70s at lower helm and one at upper helm

Mechanical

- Side power variable speed bow thruster on upper, lower, and aft decks
- Triple station remote windlass system with 196 ft chain
- Dual air horns
- Cruisair tempered chilled water system air conditioning with reverse cycle heat
- Power-assisted hydraulic steering system
- Remote shut-off for fuel system
- Lewmar V6 windlass at the upper and lower helms and aft deck controls
- Bennett trim tab system with indicator
- 1400 gpd sea recovery water maker with lower helm remote

- 220v/240v 27KW Onan diesel generator
- 17.5 KVA Onan second generator
- 2 x shore power cable Glendenin
- 240v shore power with 2 x 80-amp float battery charger
- Brownies dive compressor with E-reel electric retractor installed in lazarette and transom outlet.

Engine Room

- Oil change system for engines and generator
- Safety door
- Overhead engine room access
- Automatic/manual override fire extinguishing system
- Dual Racor high-capacity fuel filter/water separators
- Clear plastic fuel filter containers
- Stainless steel exhaust clamps
- Engine room soundproofing
- High-volume air intakes
- Engine room blower system
- Engine room lighting
- Fresh water supply facet at front of engine room
- Electric power management panels
- PM3 power support
- Engine remote control panel
- Custom aluminum structure over engines to hold water maker and craftsman tool box

Engine and Generator Hours

Onan 27KW, 558

Onan 17KW, 522Hrs

Port Engine 174 Hrs

Stbd Engine 173 Hrs

Decks

- Full walk-around side decks
- Forward lounge seating Portuguese Bridge Style
- Forward sun-pads with lounge backs in Movida Met DIAMANTE SNOW with Met CARBON inlay and cover
- Fwd Fusion Stereo system with JL Audio speakers and blue tooth connectivity
- Forward storage port and starboard lockers
- Full stainless steel bow railing
- Large stainless steel mooring and spring cleats

- Stainless steel anchor
- Forward cushion storage
- Additional anchor chain to total 196'
- Stainless steel anchor
- Custom stainless steel flybridge aft deck rails

Hull

- Electro-hydraulic raise and lower swim platform
- Aft equipment storage
- Large hull side windows in Master Stateroom
- Hardtop with electric soft sunroof insert, stainless steel supports
- Chase tubes from main helm to radar arch for electronics installations
- Yacht mast
- Extended aft bridge with custom stainless steel staple rails
- Remote-controlled passerelle electro-hydraulic gangway
- Docking lights
- High speed balance rudders
- 4 aft underwater lights, 4 underwater lights under side windows

CUSTOM ITEMS

- COCKPIT MINI BAR (PRINCESS 82 COCKPIT MINI BAR).
- FWD AND FLYBRIDGE SUN BEDS, PRINCESS 82 STYLE WEGE BACK REST.
- YACHT SIGNS SS NAME AND LOGO WITH LED LIGHTING.
- KARAOKE IN SALON.
- DOUBLE CARPET IN SALON AND MAIN STATEOOM.
- SWIM PLATFORM E REEL FOR BROWNIES THIRD LUNG INSTALLED IN LAZARETTE.
- CANVAS DESIGNERS FLAYBRIDGE 4 SIDE ENCLOSURE. 4 HARD PLASTIC FRONT WINDOW PANELS, SLIDING OPENING.
- YRM REMOVABLE DINGHI CHOCKS, THAT CAN BE USED IN SWIM PLATFORM OR IN FLYBRIDGE OVERHANG.
- UNDERWATER LIGHTS UNDER MAIN STATEROOM PANORAMIC WINDOWS.
- EXTRA COOLER INSTALLED IN FLYBRIDGE.
- AFT FLYBRIDGE STAINLESS STEEL STAPLE RAILS.
- UPGRADED FUSION STEREO AND JL AUDIO SPEAKERS AFT AND FORE DECK, WITH BLUE-TOOTH CONNECTIVITY.
- EXTRA STORAGE UNDER FLYBRIDGE AND SALON SOFAS, AND SHELVES IN SOME OF THE CLOSETS.
- 2ND GENERATOR.
- WATER MAKER AND CRAFTSMAN TOOL BOX IN ENGINE ROOM.
- DUAL RACOR HIGH CAPACITY FUEL/WATER SEPARATORS IPO STD SEPAR FUEL/WATER SEPARATORS.
- ADDITIONAL ANCHOR CHAIN TO TOTAL 196FT W/SS ANCHOR.

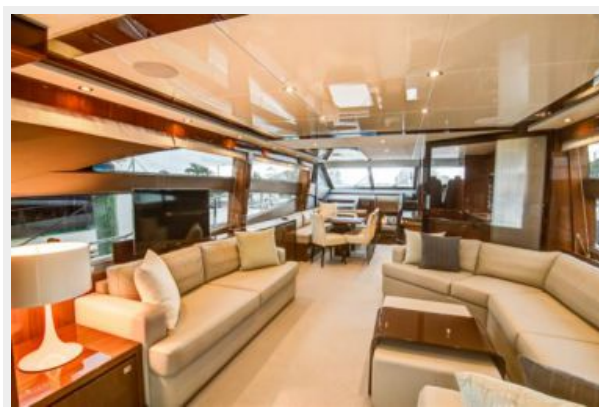
Исключения

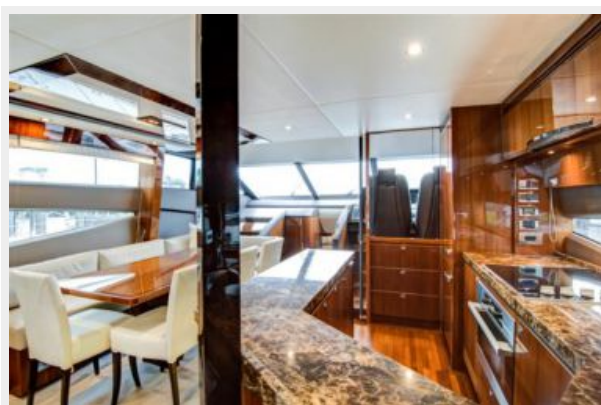
При продаже яхты исключаются личные вещи владельца.

Отказ от ответственности

Компания предоставляет описание судна или яхты добросовестно, но не может гарантировать точность этой информации, а также не ручается за техническое состояние. Покупатель должен проинструктировать своих агентов или оценщиков исследовать представленную информацию более подробно, по собственному желанию. Продажа судна или яхты, изменение цены или снятие с продажи будет происходить без предварительного уведомления.

ФОТОГРАФИИ





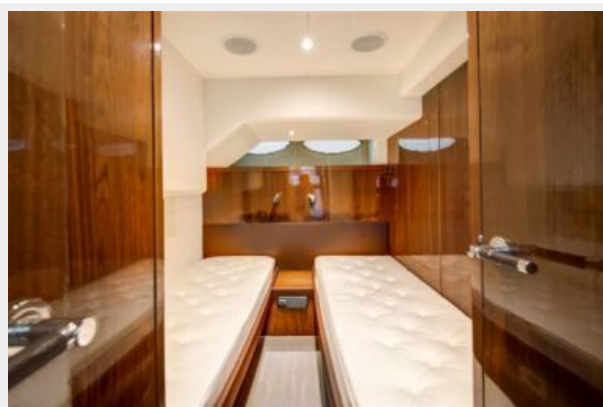




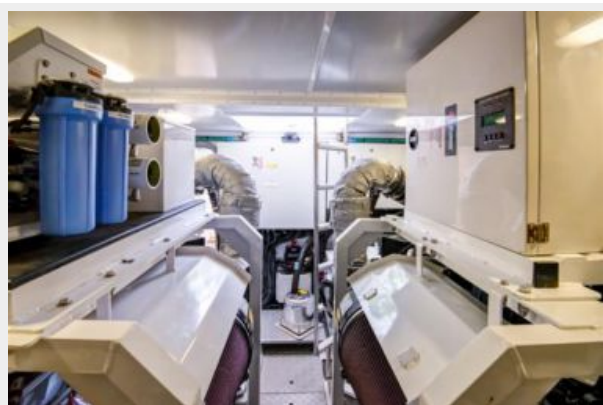














КОНТАКТЫ

Андрей Шестаков (Andrey Shestakov) – ведущий яхтенный брокер отдела продаж яхт и судов компании Shestakov Yacht Sales Inc. Официальный представитель Shestakov Yacht Sales Inc. для русскоговорящих клиентов в центральном офисе компании в Майами/Форт Лодердейл/Флорида/США.

Контактная информация

Email: andrey@shestakovyachtsales.com

Web: shestakovyachtsales.com

Телефоны

Краснодарский край: **+7(918)465-66-44**

США, Майами, Флорида: **+1(954)274-4435**

Время работы

Понедельник – Суббота: **9:00 - 21:00**
EDT

Воскресенье: **Закрето**

Адрес



Harbour Towne Marina, 850 NE 3rd St,
STE 213, Dania, FL 33004