

HOT CHOCOLATE II — OFFSHORE



Судостроитель: OFFSHORE

Год постройки: 2002

Модель: Моторная яхта

Цена: **ЦЕНА ЯХТЫ ПО ЗАПРОСУ**

Местонахождение: United States

Длина общая: 54' 0" (16.46m)

Ширина: 15' 10" (4.83m)

Макс. осадка: 4' 6" (1.37m)

Купить **Hot Chocolate II — OFFSHORE** а также выбрать подходящую вам яхту из нашего каталога яхт вам поможет опытный яхтенный брокер Андрей Шестаков. На сегодняшний день компания **Shestakov Yacht Sales Inc.** имеет большое количество яхт в собственном списке продаж, а также тесно сотрудничает со всеми крупными яхтенными производителями по всему миру.

Для того чтобы купить яхту **Hot Chocolate II — OFFSHORE** а также проконсультироваться по любому вопросу связанному с покупкой, продажей, чартером яхт позвоните по телефону **+7(918)465-66-44**.

ОГЛАВЛЕНИЕ

ОГЛАВЛЕНИЕ	2
ХАРАКТЕРИСТИКИ	4
Обзор	4
Основная информация	4
Размеры	4
Скорость, вместимость и масса	5
Размещение	5
Корпус и палуба	5
Информация о двигателе	5
ПОДРОБНОЕ ОПИСАНИЕ	6
General Description	6
Accommodations	6
Cockpit Features	6
Construction	7
Deck & Exterior	7
Design Features	7
Electronics	8
Engine Room	8
Exterior	9
Equipment	9
Galley/Laundry	10
Staterooms & Heads	10
Interior Finish	11
Mechanical Equipment	11
Pilothouse	11
Salon	12
Upgrades & Options	12
Lates Updates	12

Disclaimer	13
Исключения	13
Отказ от ответственности	13
ФОТОГРАФИИ	14
КОНТАКТЫ	31
Контактная информация	31
Телефоны	31
Время работы	31
Адрес	31

ХАРАКТЕРИСТИКИ

Обзор

This Offshore 54' pilothouse has a well proven cruising history, she is very well equipped, and beautifully furnished. Being designed by William Crealock, she has one of the "softest rides" on the sea. A fantastic layout which provides a large saloon and galley on the main deck, a covered aft deck, internal flybridge access, a guest's cabin with island double berth and ensuite, and a full beam master stateroom with ensuite. Perfect for a cruising couple or spending time with family and friends on the way to your favorite destination.

Smartly Equipped with:

Bow and Stern Thrusters

Yacht Controller Hand Held Remote

Wesmar Stabilizers

New Furuno Electronics

Please inquire about many more recent upgrades

Основная информация

Тип судна: Моторная яхта

Подкатегория: Pilothouse

Модельный год: 2002

Год постройки: 2002

Страна: United States

Размеры

Длина общая: 54' 0" (16.46m)

Ширина: 15' 10" (4.83m)

Макс. осадка: 4' 6" (1.37m)

Длина привального бруса: 57' 3"
(17.45m)

Скорость, вместимость и масса

Водоизмещение: 57000 Pounds

Вместимость воды: 300 Gallons

Вместимость сточного бака: 70 Gallons

Объем топливного бака: 1000 Gallons

Размещение

Всего кают: 1

Всего ком. состава: 2

Корпус и палуба

Материал корпуса: Fiberglass

Информация о двигателе

Производитель: CAT

ПОДРОБНОЕ ОПИСАНИЕ

General Description

William Crealock's design of the Offshore 54 Pilothouse maintains all the best features of Offshore's larger yachts; the renowned soft ride, safe walk-a-round decks and unmatched quality, all without compromising interior and exterior spaces.

Hot Chocolate II has the feel of a much larger boat with her wide side decks, roomy cockpit, open airy salon and galley, and very generous accommodations. From the cockpit, one enters the salon through one of two sliding doors and immediately the openness and brightness of her salon is evident. Lots of seating provides great space for entertaining or just relaxing. The galley is situated just forward of the salon and is integrated within the salon so owners and guest can still engage while preparing meals. Her galley includes all appliances necessary to prepare gourmet meals. Opposite the galley is a large storage area, integrated wine chiller, and countertop again making entertaining a snap. Moving forward and up a couple of steps to the pilothouse, one immediately notices a great deal of attention has been paid towards design of the space as visibility is great in all directions. Additional seating and a dinette are provided just aft of the helm and pilothouse doors are available both to port and starboard making docking and handling lines a breeze. From the pilothouse the flybridge is accessible via steps to starboard. The Flybridge is enormous with generous seating, storage, outdoor food prep, and tender davit and stowage. Moving down to the accommodations deck from the pilothouse, the VIP stateroom is located in the forepeak along with private and day access to the head. Moving aft the master stateroom is full beam with the queen berth located along the centerline. Storage can be found everywhere and the hanging lockers are lined in cedar. The large master head is situated to port. Within the companionway between staterooms are separate washer and dryer.

Accommodations

The Offshore 54' Pilothouse features a generous owner's stateroom plus one VIP stateroom. Attention to detail and superb craftsmanship are immediately evident, from the generous salon and galley to her roomy pilothouse. Included is an integral sport deck with concealed swim ladder. Offshore offers ease of entry with port, starboard and transom hull doors, attesting to the functionality of the yacht's design.

Cockpit Features

Hynautic hydraulic steering controls Hynautic hydraulic engine controls Stainless steel destroyer type wheel Stainless steel cockpit to boatdeck ladder with stainless steel manship hatch Engine room access from cockpit and salon Hatch ladder Alson's cockpit shower Lazarette hatch

Cockpit storage bins with drains Cockpit storage cabinet Teak grates for exterior cabinets Two 12 v cockpit flood lights Two 1 1/2" 'U' rails with cross member @ 54' stern Transom door 316 Stainless steel swim ladder

Construction

Hand laminated bi directional fiberglass reinforced with vacuum bagged Corecell in Hull and structural areas above the waterline Uni-directional laminates @ engine stringers & hull door openings Double laminations @ chine, keel and running hardware locations Four full length longitudinal engine stringers & athwartship reinforcing stringers as per design main bulkheads padded @ hull and bonded as per schedule Hull to deck connection mechanically fastened and bonded as per schedule Vinylester resin used in hull laminate and outer layers of cabins and decks for osmosis protection Barrier coating and bottom paint

Deck & Exterior

Black boot stripe Double black stripe @ fwd deck sprayed in mold black gel coat @ salon side post & P/H side window/door 1 1/4" solid 316 stainless steel handrails w/welded joints @ forward deck & boat deck Port and starboard flush Aritex aluminum/FRP sliding doors @ Pilothouse Double Salon aft sliding doors - Aritex aluminum w/FRP skins Anchor platform w/dual rollers Anchor chain stored in forward keel area Hella navigation lights Molded foredeck seat w/storage Two foredeck storage lockers Freshwater wash down @ forward and aft decks Quality locking hardware on opening windows & hatch exterior doors Eight 12v exterior deck dome lights 2 Manship stainless deck hatches colored to match gel coat 3 Manship stainless deck hatches @ flybridge 8 Manship stainless 14" port lights colored to match gel coat 1,000lb Marquipt Davit 1 Maxwell/Nillson 3,500 lb windlass, dual direction, overload, 3 station Control, chain stopper, anchor roller Bow and stern flag staffs and sockets 6 hawse holes w/cleats + forward deck cleats / bow chock 2 Transom hawse holes Stainless steel Destroyer type wheel Exterior safety lights @ foot level Rope locker Dockside water connector/regulator

Design Features

- Raised double chine
- Port, Starboard & Transom hull doors
- Two-tone non skid deck finishes
- Molded upper and lower rubrails capped with solid stainless steel rub rail
- Flush aluminum covered with FRP pilothouse exterior doors for watertight seal
- Double salon aft sliding doors with full glass-aluminum with FRP doors
- Brassworks latch
- Leakproof moded frp window frames, doors and hatches
- No exterior aluminum
- #316 grade stainless steel all exterior hardware, hinges, etc.
- Underwater exhaust

Electronics

- **Pilot House:**
- Yacht Controller Remote
- Dual Furuno LCD displays
- Furuno 6kw nautical radar
- Furuno navigation net sounder
- Furuno chart plotter C-Map NT
- Icom 602 VHF radio
- ACR search light
- SeaTel 24 satellite TV antenna (inop)
- CCTV color cameras engine room and aft deck
- Simrad AP-25 auto pilot
- Satellite phone external antenna and cable (inop)
- Bow and Stern Thrusters

- **Fly Bridge:**
- Yacht Controller Remote
- Furuno 12" LCD display
- Full Engine Diagnostics
- Bow and Stern Thrusters
-

Engine Room

Salon sole/Engine room overhead: laminated FRP & Corecell Overhead space: insulated with a combination of layers of high density foam with sound shield Bulkheads: insulated with a high density foam with sound shield Fuel tank faces: insulated and covered with aluminum clad hardboard Stainless steel engine beds Engine Room fuel tanks - aluminum, epoxy painted Dual Racor 1000 MA fuel filters 2 Racor 500 MA fuel filters for Generators Copper fuel system plumbing w/shut off valves at all tank supply fittings Stainless fuel supply fuel manifolds with sight gauges, supply & return Full flow stainless steel fuel valves Supply lines from all tanks from aft lower corner accessible Easy access clean outs on all tanks Headhunter 110v MACH 5 as primary pump with Headhunter 12v X-caliber as back up Stainless steel lazarette water tanks Freshwater wash down @ Engine Room FRP under forward sole water tanks & holding tank 1 Flo-Jet #4325-143A saltwater washdown system w/sea water strainer 3 Groco sea water strainers, 1 each main engines, 1 generator 2 Racor fresh water filters All high grade fresh water plumbing w/brass fittings 2 Rule #800 shower sump pumps Independent watertight bulkhead compartments made common w/bronze gate valves 5 Rule 2000 bilge pumps w/Rule super switches 1 Whale Gusher hand bilge pump 1 Bilge water alarm Washer & Dryer overflow drain to bilge Bilge pumps set in bilge wells Common drain discharge system to minimize thru hull

fittings Tecma Heads 2 Sealand macerator pumps 1 Sealand vent & holding tank Sealand monitor panel 1 - 20 gallon stainless steel 110v hot water heater Quality Groco bronze sea cocks on all through hull fitting Quality propeller shaft struts w/cutlas bearings "Faster" Manganese Bronze propellers Custom #316 stainless steel exhaust risers Button type insulation covers for risers Aquamet or Aqualoy #22 stainless steel rudder posts w/SS hydrodynamic blades Aquamet or Aqualloy #22 propeller shafting Tides prop shaft and rudder seals Spare lip seals for tides 4 Delta T engine air intakes to control water induction Two 110v engine room lights Engine room hatch dog downs Four 12v engine room lights 2 FRP engine drip pans 2 - 24v Delta engine room blowers w/pvc ducting 1 - Hart tank tender system servicing all tanks Gas assist shocks for engine & lazarette hatches Rudder storage shelf

Electrical System

AC and DC breaker distribution panels at lower station AC & DC breaker protection near each source 5 point switch for AC panel 2500 watt Xantrex inverter system 1 - Newmar 24v battery charger for engine start 1 - Newmar 40amp 12v battery charger for house backup 1 - gel cell battery w/box for generator start 2 - 225amp/hr 8D 12v gel cell starting batteries (24v start = 4 8d batteries) 12 - 180amp/hr 6v gel cell batteries w/boxes for ship's 12v system 1 - 130amp 12v alternator for charging house batteries (24v start only 2 - 50amp shore power connectors @starboard & port cabin sides or aft Quality AC & DC lighting throughout 1 - phone/cable TV connector & starboard cabin side Panasonic phone/intercom system Zinc saver Dome light in bow thruster compartment GFI outlets

Exterior

- Teak cap rail at cockpit- oval shape
- Anchor platform for 2nd anchor
- S/S rubrail at boat deck port and starboard edges
- Forward rail gates port and starboard

Equipment

- Automatic fire boy system at engine room with engine shut down
- 1 pair 12"x54" Bennett trim tabs, 2 station control
- 3 Exalto two arm parallel windshield wipers
- 1 windshield wash system
- Emergency tiller
- WestMar stabilizers
- 800 gal per day watermaker (INOP)
- Bow and Stern thruster

Molded FRP Exterior

- Interior & exterior window frames- exterior sliding door faces
- Exterior sliding door tracks
- Cockpit cabin
- Anchor platform
- Radar arch
- Side roof supports
- Swim platform
- Exhaust system & transom extensions- under deck tanks
-

Galley/Laundry

- Corian counter tops in galley with Moen stainless steel sink
- Single lever faucet
- Concealed hinges on cabinet doors
- Drawer and cabinet interiors finished with white Formica
- 220v Kenyon 3 burner electric stove top with pot holder
- Microwave/Convection oven
- Sub Zero undercounter refrigerator
- Sub Zero undercounter freezer
- Disposal system
- Trash compactor
- Asko washer & dryer
- 5 slide out shelves in galley area
- 1-12v galley exhaust blower

Staterooms & Heads

- Hanging lockers lined in Cedar wood with automatic lighting
- Forward Island berth hinged for storage
- Concealed hinges on cabinet doors
- Drawer & cabinet interiors finished with white Formica, Marbelite counter tops and sinks in heads
- All teak and holly soles in heads
- Formica bulkheads, overheads in heads
- FRP showers
- Single lever faucets at all sinks
- Temperature regulated shower faucets
- Tecma heads
- Head ventilation blowers
- 4 drawers under forward berth

Interior Finish

- Teak interior and cabinetry
- Hand rubbed satin finish bulkheads and wall surfaces
- All mirrors beveled and framed in teak
- Teak and holly soles in galley, pilothouse, heads, and lobbys
- Removable padded vinyl overheads throughout
- Hidden hinges
- Sugatsune push release latches
- Brassworks interior door hardware
- Halogen lighting with dimmer switches
- Tempered window glass, tinted 28% bronze
- Smooth finish polyester painted bilges

Mechanical Equipment

Cat 3196-660 HP w/ twin disc MG5090A gears, 24v charger, 12v alternator, 4 blade props, with prevailer get cell start batteries. 12 kw N.L. Generator w/gel cell start battery (total one STD 8kw, and one 12kw) 24vDC-12" dual S/S prop V2-12E Wesmar bow thruster w/tube & two 4D gel cell batteries w/boxes Third Station Control for bow thruster 57,000 BTU A/C - 4 compressors, 5 air handlers (2 SR layout) Hynautic power steering to replace standard Security lock via Morse cable @ Engine Room access Hatch @ Cockpit step Reverso gear driven oil change system - #GP-705 Dockside water connector/regulator at Transom 300 ft of 3/8" hight est g-2 linck anchor chain and anchor

Pilothouse

- Complete engine instrumentation
- Hynautic hydraulic steering controls
- Hynautic hydraulic engine controls
- Teak & Stainless steel destroyer type wheel
- Pilothouse indicator panel for systems readiness
- Dome light inside of P/H console
- Comple AC/DC distribution panel
- Engine warning panels
- Antenna booster & switch TV
- Dimmer switch for pilothouse instrument lights
- Halogen lighting with dimmers
- Interior stairway to flybridge w/stainless steel manship door
- Stainless steel manship pass through to flybridge
- Built in "L" seat & teak Hi-Lo table with hand crank
- Chart area and storage

Salon

- TV/VCR cabinet
- "U" Settee in salon
- Hi-Lo table with hand crank base
- Engine room access from salon hatch/ladder
- Starboard storage cabinet
- Inside and out, Maple Burl veneer TV cabinet top, Maple Burl veneer custom salon TV cabinet with locker space; Raritan stainless steel icemaker in ext. cab.

Upgrades & Options

24DC-12" Dual S/S Prop V2-12E Wesmar Bow Thruster w/Tube & Two 4D Gel Cell Batteries w/boxes Third Station Control for Bow Thruster 57,000 BTU A/C - 4 Compressors, 5 Air Handlers (2 SR Layout) Hynautic Power Steering to Replace Standard Security Lock Via Morse Cable @ Engine Room Access Hatch @ Cockpit Step Reverso Gear Driven Oil Change System - #GP-705 Teak Cap Rail @ Cockpit - Oval Shape Anchor Platform for 2nd Anchor S/S Rub Rail At Boat Deck P & S Edges Forward Rail Gates Port & Starboard File Drawer at L or U Settee Bar Glass & Bottle Storage @ Existing Salon Cabinet Raritan Stainless Steel Icemaker in EXT Cab w/4 vents - with FRP Doors Isotherm 65-UV REFER @ FB Cabinet without Cabinet Door Replace Standard Sink with Franke Seaward #345B 220V Oven - Keep STD Micro In Pantry Raised Shelf at Galley 4 Drawers Under Forward Berth modify the pyramid base per drawing All safety light change to cantalupe led A/L @/@ IP65 Custom decor package Custom audio/video package

Lates Updates

- **LED Lights in Master - 2014**
- **LED lights in MSR Bath - 2014**
- **Flybridge Soft Top - 2013**
- **Flybridge Fridge - 2013**
- **KVH Trac 5 Satellite - 2015**
- **Life Raft - 2014**
- **Furuno NavNet 3D Electronics Pilothouse and Flybridge - 2013**
- **Upgraded Audio/Visual and salon Cabinetry - 2012**
- **Two new AC blowers - 2015**
- **Stern Thruster - 2014**

- **Yacht Controller - 2015**
- **All interior and flybridge soft goods replaced to include carpet, curtains, upholstery, accent pillows, insinglass and foot rests - 2012**
- **New Custom mattresses - 2012**

Disclaimer

Personal belongings and the tender are excluded from the sale of this vessel.

The Company offers the details of this vessel in good faith but cannot guarantee or warrant the accuracy of this information nor warrant the condition of the vessel. A buyer should instruct his agents, or his surveyors, to investigate such details as the buyer desires validated. This vessel is offered subject to prior sale, price change, or withdrawal without notice.

Исключения

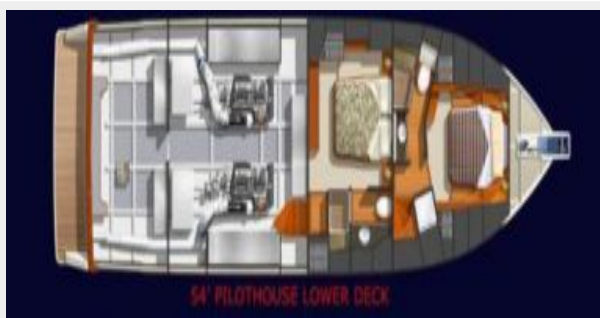
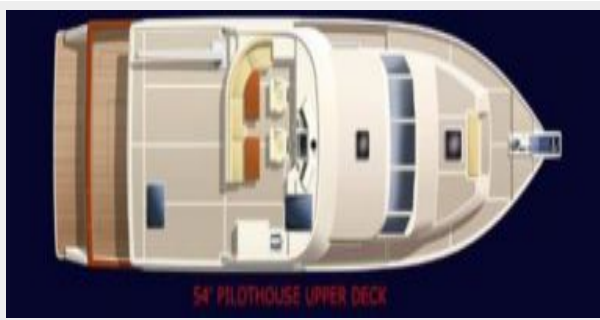
При продаже яхты исключаются личные вещи владельца.

Отказ от ответственности

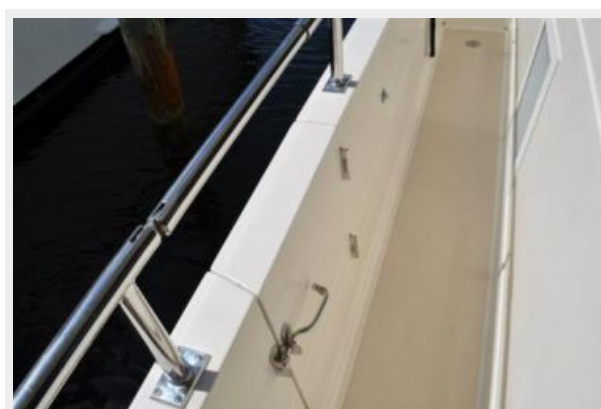
Компания предоставляет описание судна или яхты добросовестно, но не может гарантировать точность этой информации, а также не ручается за техническое состояние. Покупатель должен проинструктировать своих агентов или оценщиков исследовать представленную информацию более подробно, по собственному желанию. Продажа судна или яхты, изменение цены или снятие с продажи будет происходить без предварительного уведомления.

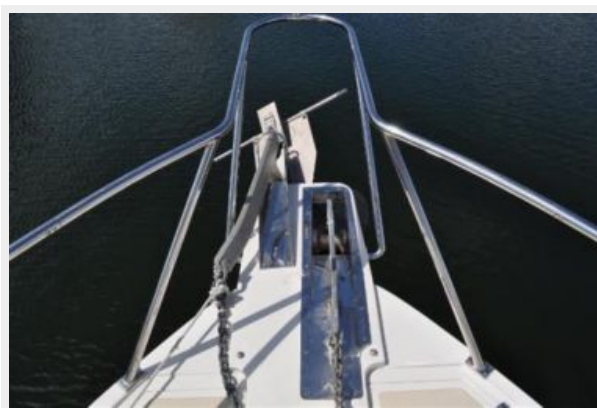
ФОТОГРАФИИ







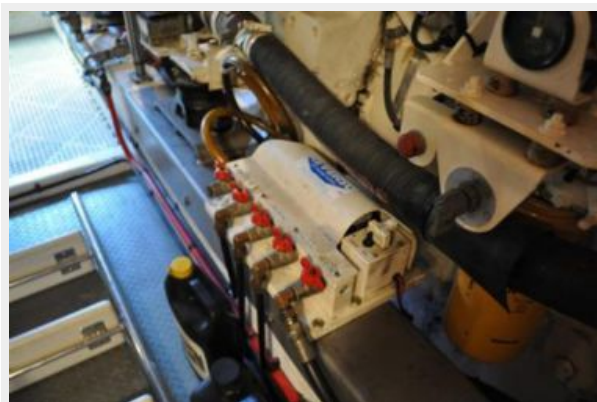
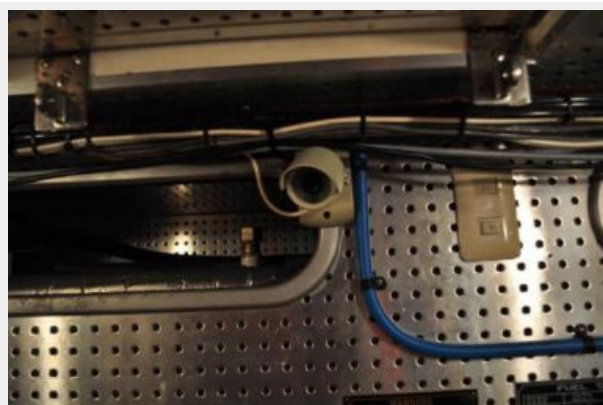












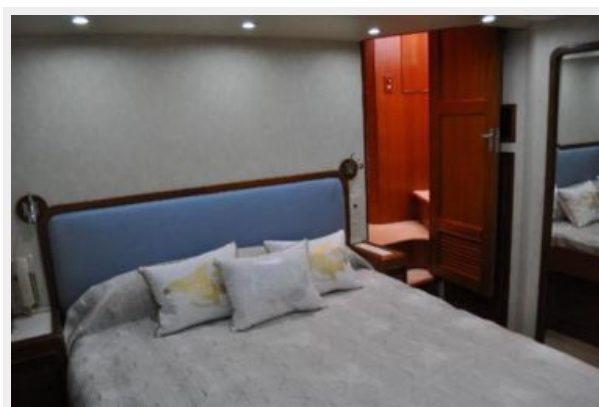


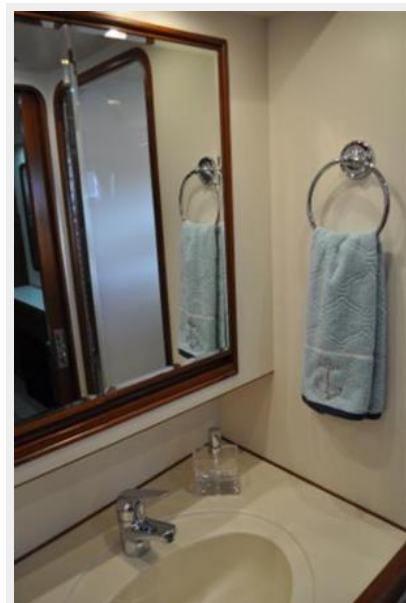
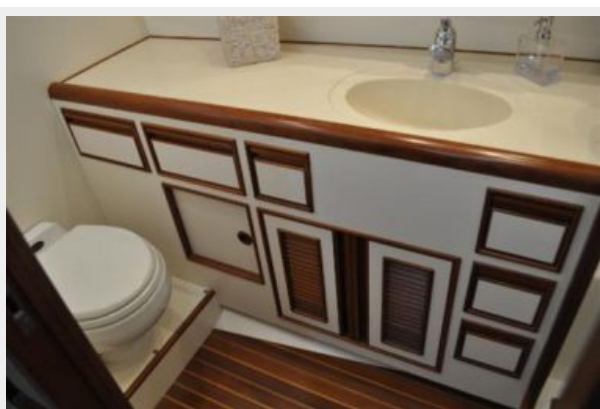














КОНТАКТЫ

Андрей Шестаков (Andrey Shestakov) – ведущий яхтенный брокер отдела продаж яхт и судов компании Shestakov Yacht Sales Inc. Официальный представитель Shestakov Yacht Sales Inc. для русскоговорящих клиентов в центральном офисе компании в Майами/Форт Лодердейл/Флорида/США.

Контактная информация

Email: andrey@shestakovyachtsales.com

Web: shestakovyachtsales.com

Телефоны

Краснодарский край: **+7(918)465-66-44**

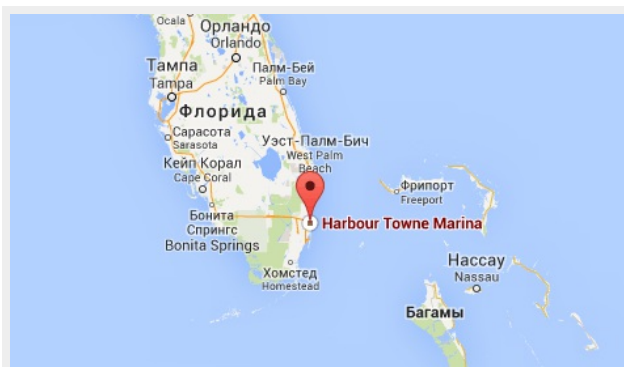
США, Майами, Флорида: **+1(954)274-4435**

Время работы

Понедельник – Суббота: **9:00 - 21:00**
EDT

Воскресенье: **Закрето**

Адрес



Harbour Towne Marina, 850 NE 3rd St,
STE 213, Dania, FL 33004