

BEHOAVED — AZIMUT



Судостроитель: [AZIMUT](#)

Год постройки: 2015

Модель: Моторная яхта

Цена: **ЦЕНА ЯХТЫ ПО ЗАПРОСУ**

Местонахождение: United States

Длина общая: 64' 0" (19.51m)

Ширина: 17' 2" (5.23m)

Мин. осадка: 4' 11" (1.50m)

Крейс. скорость: 28 Kts. (32 MPH)

Макс. скорость: 34 Kts. (39 MPH)

Купить **BEHOAVED — AZIMUT** а также выбрать подходящую вам яхту из нашего каталога яхт вам поможет опытный яхтенный брокер Андрей Шестаков. На сегодняшний день компания **Shestakov Yacht Sales Inc.** имеет большое количество яхт в собственном списке продаж, а также тесно сотрудничает со всеми крупными яхтенными производителями по всему миру.

Для того чтобы купить яхту **BEHOAVED — AZIMUT** а также проконсультироваться по любому вопросу связанному с покупкой, продажей, чартером яхт позвоните по телефону **+7(918)465-66-44**.

ОГЛАВЛЕНИЕ

ОГЛАВЛЕНИЕ	2
ХАРАКТЕРИСТИКИ	3
Обзор	3
Основная информация	6
Размеры	7
Скорость, вместимость и масса	7
Размещение	7
Корпус и палуба	7
Информация о двигателе	7
ФОТОГРАФИИ	8
КОНТАКТЫ	24
Контактная информация	24
Телефоны	24
Время работы	24
Адрес	24

ХАРАКТЕРИСТИКИ

Обзор

2015 Azimut 64 Flybridge Engine hours - Port 294, Starboard 296 The 64 Flybridge has more than 2000 HP of power and the light weight of the carbon fibre outline a design that focuses on the comfort and safety of the owner and his entourage. The lines of The deckhouse exude elegance and harmony with its stylish dynamic windows further enhanced by the "fin" effect emerging at the highest point of the saloon. The mirrored glass panels on the roll-bar and the back-lit logo on the flybridge are fine examples of innovative styling. EXTRA'S \$70,000 value • New Hull Bottom Paint / Prop Inspection (Sept 2016) - \$5,000 • Speed prop applied to all metal surfaces (Sept 2016) - \$3,500 • 2014 Amanzi M350 Tender with 40HP Mercury Outboard - \$20,000 • Cat C18 60 month / 1500 hr extended warranty (assignable) - \$16,500 • Brunswick extended warranty (assignable) - \$5,000 • New Interior (by Custom Yacht Fashion-pillows, bedding, carpet) - \$18,000 • 2016 Fusion Radio upgrade (Bluetooth) - \$1,000 • V-Kool Sun Film (windshield, port, starboard) - \$3,400 • AIS - Receive and Transpond - \$1,000 • Marquipt Stainless SeaStair Gang Plank • XM Radio • Direct TV • Spare Parts Inventory • Oil change (Nov 2016) • Fuel Filters (Oct 2016) EXCLUSIONS: • BeHooved lighted signs • SCUBA Tanks & Accessories (4 tanks) • Oxygen Kit • Ditch Bag & Contents (EPIRB, First Aid Kit, Radio, Laser Flare) • Monogramed "BeHooved" towels • Yeti Cooler & Soft side cooler(s) • Tool Box Options: Central vacuum system Cockpit chair Flagpole Galley countertop and heads vanities in Emp or Botticino marble Hard Top Hi-lo system for TV Mosquito nets for portholes Two glendenning cable master Painted Hull Raymarine AIS 650 (upgraded to receive and transpond) Raymarine Platinum Package RAYMARINE Video cameras for Platinum Pkg Safe in master cabin Seakeeper Stabilizer (Includes upgraded generator) 2 new sets of linens for all staterooms Azimut Logo towels Sofà/Bed in salon Upgraded 2016 fusion stereo on flybridge (bluetooth) Sunbathing cushions on aft flybridge Teak on aft flybridge deck Teak on flybridge deck Teak on side decks Toilet with bidet faucet feature Two floodlights installed on aft flybridge Washer and dryer units in lower deck Winecooler ADVANCED PACK: Double Racor filters for main engines Joystick control for engines and thrusters Spare conduits connecting engine room/wheelhouse/radar arch Water maker predisposition Electric mooring winches in cockpit Additional searchlight control at lower helm Decor EXCLUSIVE Gannau cockpit & Miele microwave combo Chaincounter control at main helm Guest Cabin LED Lighting VIP Cabin LED Lighting Owner Cabin LED Lighting Owner Cabin Wooden Cavity for Bose Amp Owner Cabin Mirror on fore bulkhead w/spotlight Master Head addition of wooden storage under porthole Galley 3 add'l sockets Bottles & Glass Holder on Fly 2 Spotlights over vanity in owner cabin Add'l fridge in galley Decor Upgrading Additional Seakeeper control station on fly Thrusters Upgrade (Includes Stern Thruster) Telescopic gangway Sun Pad Cover Aft Bench Cover Table Cover Complete A/V Package Custom Table Full Flybridge Set Furniture in Zebrano prex Set of linen (crew cabin excluded) Zebrano wooden floor in salon, dinette & helm Salon The open and airy salon area is the perfect mix for both relaxing and entertaining. Tasteful custom décor adds a feeling of ultimate luxury. Easy access through large sliding glass doors opens up the interior to the aft deck, and 360-degree windows add natural light and incredible

views of your yachting destination. • U shaped seating with storage and sleeper pullout underneath • Additional seating with storage underneath • Samsung pop up television • Samsung DVD player • Bose surround sound speakers • LED direct lighting and accent lighting • Additional storage • Curtains over windows and aft doors • Cocktail table with custom décor accent • Full sliding opening salon door • Handrail at stairs • Condaria chiller unit control • Condaria Personal Climate control • Vitfrigo wine cooler Dinette Dining Area The dinette area is located to starboard and is easily served from the galley. It is large enough to accommodate guests and family comfortably, and the electronically controlled seat near the helm doubles as lower helm seating to maximize space. • Custom décor dinette table with removable middle leaf • LED direct and accent lighting • Storage underneath seating • Automatic high low seat converts between helm seat and dinette seating • Handrail with custom accent above walkway through dinette area Galley The galley is very open and social to the common areas of the yacht and easily serves the salon and dinette area. Miele appliances, custom marble countertops and wood flooring give it a comfortable feeling of home. • Custom marble countertops • Serving bar counter to dinette area • Hi-lo decorative privacy curtains • Miele Induction stove top • Miele household microwave/convection oven • Gessi faucet • Dual Franke sinks • Two Isotherm refrigerator units • Vitfrigo freezer unit • Drawers with dedicated plate storage • Overhead storage • Automatic opening window forward of galley • Neff ventilation above stovetop Lower Helm The lower helm is one of two stations to control the yacht. All controls and switches are at the fingertips of the captain from the user-friendly touch screen Raymarine electronics to the Xenta joystick control delivering unparalleled maneuverability and ease of docking. The location of the lower helm is adjacent to the common areas allowing for social interaction underway. • Azimut vessel status display • Xenta joystick control for bow and stern thrusters • Quick chain counter for anchoring • Tmp and RPM gauges • Key ignitions and start stop switched • ZF throttle controls • Jabsco searchlight • Two Seakeeper controls for two Seakeeper gyro stabilizers • Azimut automatic trim tab and trim tab controls • Sea-Fire gauge • 12V plug • AC vent • Over helm lighting • Raymarine electronics package VHF Two large touchscreen units for plotter, radar and sounder AIS system Auto pilot Cameras view from flybridge, aft deck and engine room cameras Atrium Stairway This “atrium” type stairway has the large windshield above making this area feel incredibly open with natural light and view of the outdoors. Custom décor wrapped handrails make for a safe passage to the staterooms and heads below. • Access from above salon, galley, and dinette area via staircase with open windshield view overhead • Handrails with custom wrapped accent • Miele Softtronic T8823C Dryer unit hidden behind door • Breaker panels hidden behind door • Storage hidden behind door • Companionway to forward and starboard guest stateroom • Central vacuum hookup • Miele Touchtronic W 3033 Watercontrol-System unit washer Master Stateroom A full beam layout and tasteful décor make this master stateroom a true owner’s suite. The large angled berth is to port and a vanity and desk is to starboard create maximum floor space. Large hull port lights add natural light and create an excellent view of the water outside. A large flat screen TV swivels to watch from different areas of the stateroom or berth, and LED direct and accent lighting sets the tone for a relaxing area to retire for the evening. • Full beam master with hull port lights on both port and starboard • Blinds over port lights • Large Samsung flat screen TV • Samsung DVD player • LED direct and accent lighting • Reading lights • Condaria Personal Climate AC controller • Vanity and desk area with seating and storage underneath • Bose surround sound speakers • Hanging

locker with full length mirror inside of door and compartmental storage area • Access to private ensuite head • Safe • Handrails with custom accented wrap Master Stateroom Head The master stateroom's private ensuite head has a large walk in shower with seat. Beautiful Italian design is displayed with a floating style sink and beautiful marble counter tops. • Tecma head • Storage cabinets and drawers • Mirrored vanity • Large walk in shower with overhead and wand discharge • Seating in shower • Floating style sinks • Dedicated soap dispenser holder • Opening port light with screen and blinds • Towel hangers • Exhaust fan blower VIP Forward Stateroom The generous VIP stateroom is located forward and includes a large centerline berth with storage underneath. Hull port light windows provide guests with natural light and view of the outdoors. This stateroom also has its own private head. • Centerline berth with storage underneath • Hanging lockers to port and starboard • Storage above bed • Samsung flat screen TV • Samsung DVD player • Reading lights • Padded headboard with wood accent • Hull port lights with blinds • LED direct and accent lighting • Handrail with custom wrapped décor • Condaria Personal Climate AC controller • Access to private ensuite head VIP Stateroom Head This private head is spacious and allows for guests to enjoy their privacy while staying onboard with others. • Tecma head • Storage cabinets and drawers • Mirrored vanity • Large walk in shower • Floating style sinks • Dedicated soap dispenser holder • Opening port light with blind • Towel hangers • Exhaust fan blower Starboard Guest Stateroom The third stateroom is located to starboard and has two twin berths. Custom décor mirrors the rest of the yacht and hull side windows allow for an open feeling with even more natural light. This stateroom is accessed from the companionway and also has access to the guest head. • Twin side by side berths with storage beneath • Padded wrap around headboard with wood accent • Large hanging locker with full length mirror on inside of door • LED direct and accent lighting • Opening port lights with screen covers and blinds • Reading lights • Samsung flat screen TV • Samsung DVD player • Condaria Personal Climate AC controller • Access to starboard guest head Starboard Guest Head The guest head doubles as a day head as well as the head for the starboard guest stateroom. It is easily accessed from the companionway and starboard stateroom. • Tecma head • Storage • Mirrored vanity • Shower • Floating style sink • Dedicated soap dispenser holder • Opening port light with blind • Towel hangers • Exhaust fan blower Crew Quarters The crew quarters is located aft and is accessed through an actuated door on the transom. It includes a private head and two berths. • Accessed from swim platform • Two berths • Port light • Seakeeper gyro stabilizer access Aft Deck The spacious aft deck is an excellent area to relax while cruising or entertaining. The large sliding doors open wide and connect this area to the salon and interior. Access to the flybridge is safe and simple via the large stairway, and access to the swim platform and walkarounds are to port and starboard. • Seating with large table • Teak decks • Raymarine camera • JL Audio Speakers • LED lighting • Fusion stereo control • Quick mooring windlass on both port and starboard • Large cleats • Boarding access to port and starboard with a removable Marquipt boarding stairs • Access to flybridge and walkarounds to bow • Access from swim platform port and starboard with doors • Hydraulic swim platform with tender • Storage compartments • Engine room access • Crew quarters Access from swim platform • Two 50 amp shore power cords • Glendinning cable master automatic shore cord retractors • Whale shower Bow/Foredeck The bow is another place to relax and soak up the sun on the large sun pad. The bow rails add a feeling of safety and the teak decks help reduce glare and add nautical feel for this area of the yacht. • Teak decks and side decks and nonskid on

foredeck • Bow rail all the way aft • Sun pad with handrails • Hatch • Gallinea windshield wipers • Black mesh removable covers for windshield and side windows • Cleats and chafe guards • Lewmar Delta Anchor • Quick windlass • Quick windlass controls and chain washer • Anchor locker with large storage • Searchlight Flybridge The flybridge is prime real estate for relaxing or entertaining while underway, at anchor, or at the dock offering an incredible view. Sun pads, seating areas and teak decks spread across the flybridge deck for ultimate functionality. Access to amenities include a grill, sink, icemaker, refrigerator, and TV take enjoyment to the next level. The hardtop has an automatic retractable sunshade so shade or sun is an option at your fingertips. The upper helm is a great place to operate the yacht in the outdoors and offers excellent visibility. • Hardtop with retractable sun roof • Cushioned seating and sun lounge areas • Large table • Drink holders • Raymarine camera • Samsung flat screen removable TV • Sink • Kenyon electric grill • Vitrifrigo icemaker • Waeco refrigerator • JL Audio Speakers • Teak deck • Covers for equipment • Overhead LED lighting • Upper Helm Azimut Auto trim tab and trim tab control Quick chain counter for windlass ZF throttle controls Xenta joystick for bow and stern thrusters Two Seakeeper controls for two Seakeeper Gyro Stabilizer Units Fusion Stereo control Searchlight control Engine gauges Mechanical system switches Sea-Fire gauge and switch 12V plugin Raymarine Electronics Large touchscreen units for plotter, radar and sounder VHF AIS Auto pilot Cameras view from flybridge, aft deck and engine room cameras Hull The hull is laid up with carbon and glass fibre which reduces weight and increases strength enhancing the overall performance of the yacht. The Urals grey hull paint complements the yacht's sleek lines setting her apart from the fleet. • Urals Grey hull paint • Six Aqualuma blue underwater lights • Bow and Stern thrusters • Hydraulic swim platform Engine Room The engine room is accessed through a hatch in the aft deck. It houses the powerful Caterpillar 1150 hp engines delivering stellar performance at a cruising speed of approximately 28 knots and top end of approximately 34 knots. • CAT C18 Acert 1150 hp marine engines • Kohler 23kw generator with 230 hours • Easy Chiller Condaria AC chiller unit • Dual racor fuel filters • Two fuel tanks 515 gallons each • Sea-Fire fire extinguisher system • Twin Disc transmissions Tender The tender is simply deployed by lowering the hydraulic swim platform and floating it off. The tender is great for going to shore if anchored and exploring the shallower areas of your yachting destination. • Mercury Amanzi inflatable • 40 hp Mercury four stroke engine

Основная информация

Тип судна: Моторная яхта

Подкатегория: Flybridge

Модельный год: 2015

Год постройки: 2015

Страна: United States

Регистрационный номер: 1259493

Открытая палуба мостика: Да

Размеры

Длина общая: 64' 0" (19.51m)

Ширина: 17' 2" (5.23m)

Мин. осадка: 4' 11" (1.50m)

Скорость, вместимость и масса

Крейс. скорость: 28 Kts. (32 MPH)

Макс. скорость: 34 Kts. (39 MPH)

Вместимость воды: 258 Gallons

Вместимость сточного бака: 93 Gallons

Объем топливного бака: 1030 Gallons

Размещение

Всего кают: 3

Всего ком. состава: 3

Каюты экипажа: 1

Корпус и палуба

Материал корпуса: Fiberglass

Цвет корпуса: URALS GREY

Информация о двигателе

Двигатели: 2

Производитель: Caterpillar

Модель: C18 ACERT

Тип двигателя: Inboard

Тип топлива: Diesel

ФОТОГРАФИИ









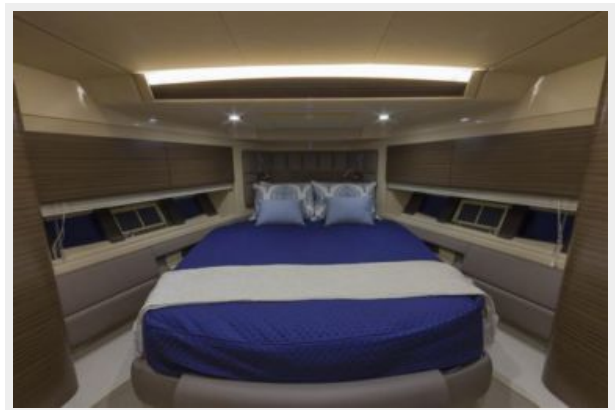
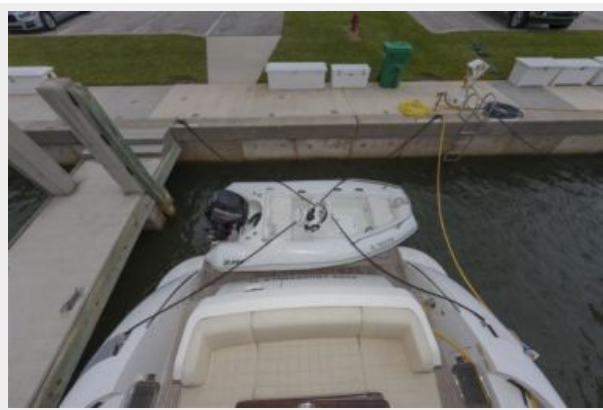


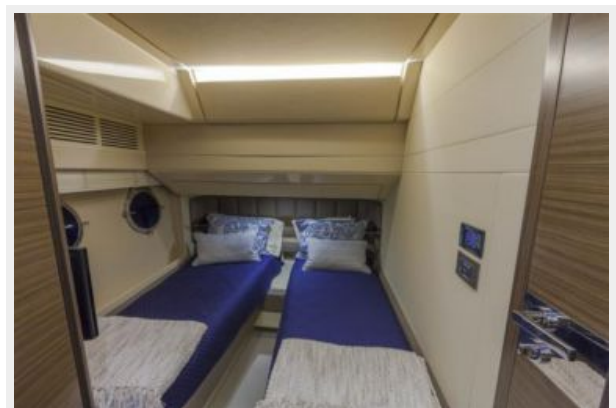
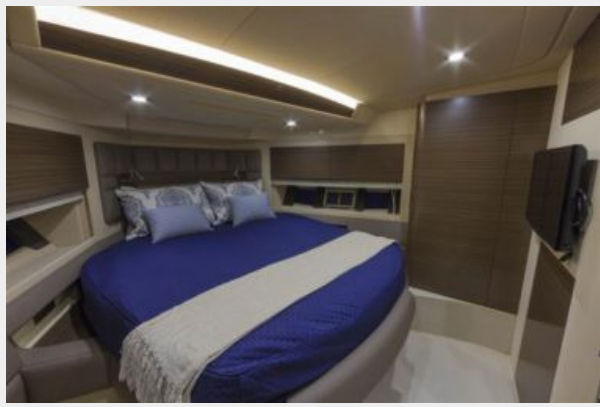


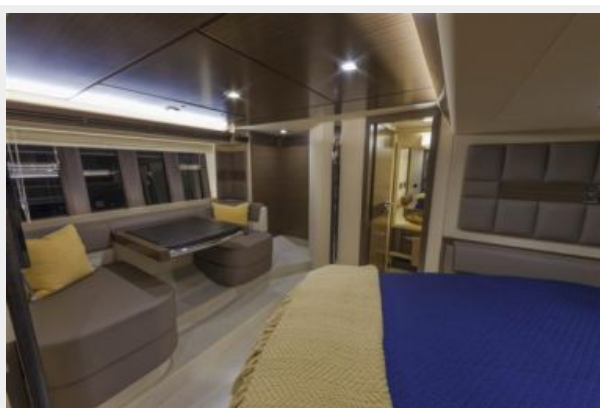
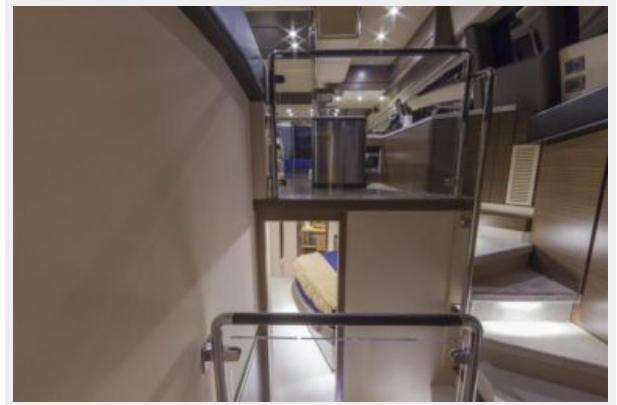
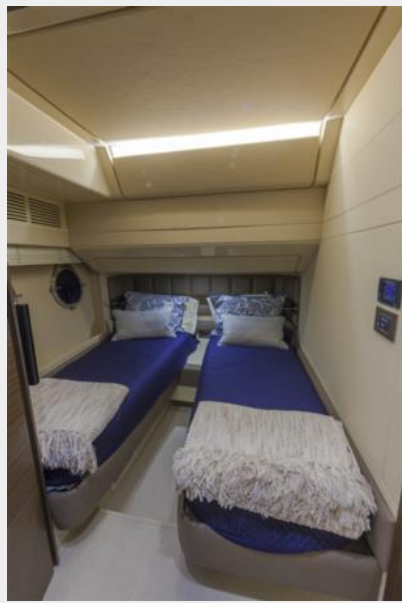




















КОНТАКТЫ

Андрей Шестаков (Andrey Shestakov) – ведущий яхтенный брокер отдела продаж яхт и судов компании Shestakov Yacht Sales Inc. Официальный представитель Shestakov Yacht Sales Inc. для русскоговорящих клиентов в центральном офисе компании в Майами/Форт Лодердейл/Флорида/США.

Контактная информация

Email: andrey@shestakovyachtsales.com

Web: shestakovyachtsales.com

Телефоны

Краснодарский край: **+7(918)465-66-44**

США, Майами, Флорида: **+1(954)274-4435**

Время работы

Понедельник – Суббота: **9:00 - 21:00**
EDT

Воскресенье: **Закрито**

Адрес



Harbour Towne Marina, 850 NE 3rd St,
STE 213, Dania, FL 33004