

THE DREAMER — QUEENS



Builder: QUEENS

Model: Motor Yacht

LOA: 50' 7" (15.4mm)

Min Draft: 4' 4" (1.3mm)

Max Draft: 4' 4" (1.3mm)

Our experienced yacht broker, Andrey Shestakov, will help you choose and buy a yacht that best suits your needs **The Dreamer — QUEENS** from **our catalogue**. Presently, at **Shestakov Yacht Sales Inc.**, we have a wide variety of yachts available on **our sale's list**. We also work in close contact with all the big **yacht manufacturers** from all over the world.

If you would like to buy a yacht **The Dreamer — QUEENS** or would like help answering any questions concerning purchasing, selling or chartering a yacht, please call **+1(954)274-4435**

TABLE OF CONTENTS

TABLE OF CONTENTS	2
SPECIFICATIONS	3
Overview	3
Basic Information	5
Dimensions	6
Speed, Capacities and Weight	6
Accommodations	6
Hull and Deck Information	6
Engine Information	6
PHOTOS	7
CONTACTS	13
Contact details	13
Telephones	13
Office hours	13
Address	13

SPECIFICATIONS

Overview

The dreamer is a fake 45 footer: this vessel is a way larger in volumes. Up/down platform, cockpit door, 2 kingsize staterooms, crew cabin with separate doors. Fully equipped.

Come see her!

Possible to sell for export with no VAT.

SPECIFICATION

Length:	15.40 mt
Beam:	4.20 mt
Draft:	1,30 mt
Hull Material:	Fiberglass
Fuel Capacity:	2000 lt
Water Capacity:	600 lt
Flag:	ITALY
Location:	ADRIATIC SEA
Year:	2008

LAYOUT

Cabins:	2 + 1 CREW
Berth:	4 + 1 CREW
Toilet:	2 + 1 CREW

ENGINE

Brand:	CUMMINS
Model:	-
Power:	2 X 600 HP
Engine hours:	500 H
Trasmission:	SHAFT DRIVE
Fuel:	Diesel

ELETTRIC

12V - 220V - Air Conditioning - Heating system - Generator 6 Kw Dynamo

EQUIPMENT

GPS/Plotter Simrad- Autopilot Simrad - Radar Simrad - VHF Shipmate.

ACCESSORIES

Bow thruster - Bathing ladder - Galley 4 fire - Bow sun cushion - Cushions - Fridge - Freezer - Oven - Stereo sound system - Sat tv system - Decoder SKY - TV n° 3 - Water pump - Chain counter - Stern mooring winch - Gangway - CD player - Coverings - Leather sofa - Waste holding tank - Up/down platform - Battery charger - Fridge in cockpit - Grill in cockpit - Searchlight - Water heater - Teak platform - Teak cockpit - Teak sideways - Bose sound system - Wooden floor.

Basic Information

Category: Motor Yacht

Model Year: 2008

Dimensions

LOA: 50' 7" (15.4mm)

Min Draft: 4' 4" (1.3mm)

Max Draft: 4' 4" (1.3mm)

Speed, Capacities and Weight

Water Capacity: 600 Gallons

Fuel Capacity: 528.34 Gal Gallons

Accommodations

Total Cabins: 2

Total Berths: 4

Total Heads: 2

Crew Berths: 1

Crew Heads: 1

Hull and Deck Information

Hull Material: Fiberglass

Engine Information

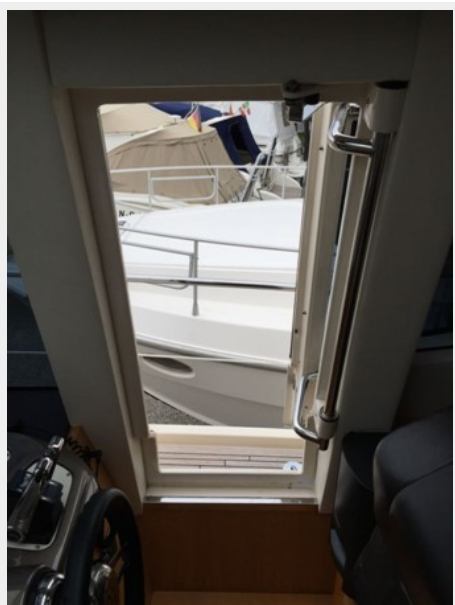
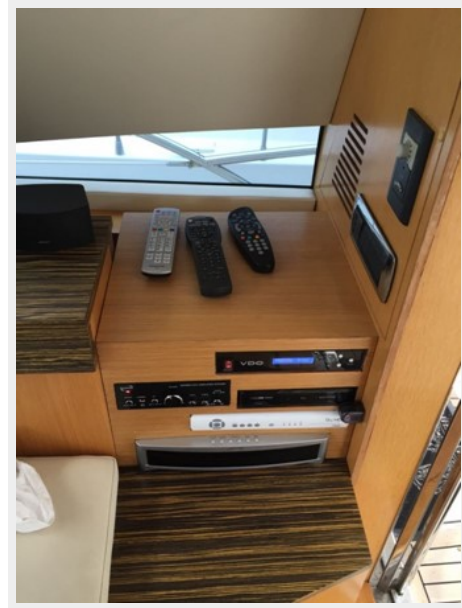
Engines: 2

Manufacturer: Cummins

Fuel Type: Diesel

PHOTOS

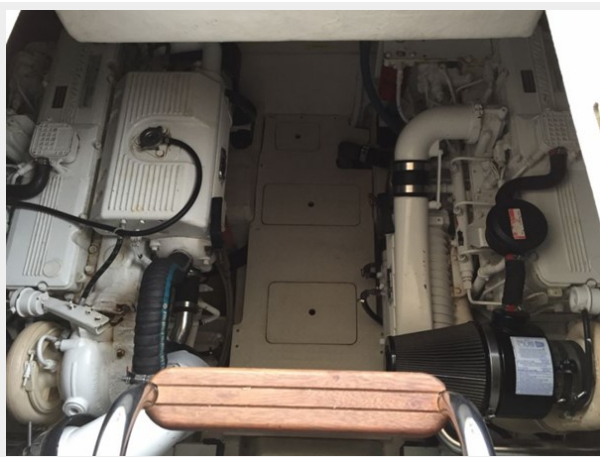
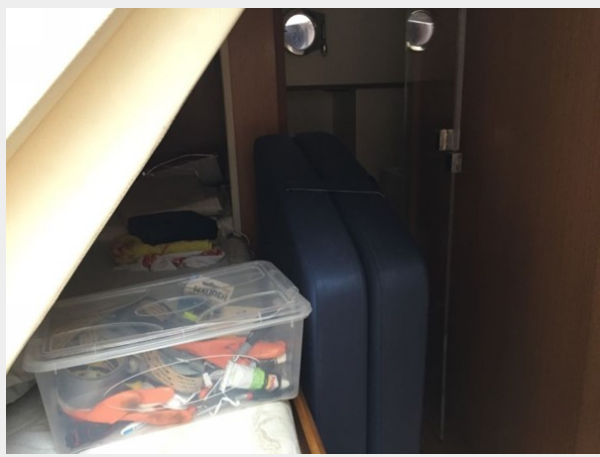












CONTACTS

Andrey Shestakov, leading yacht broker of the sales department of Shestakov Yacht Sales Inc. Shestakov Yacht Sales Inc., the official representative of the Miami/Fort Lauderdale FL headquarters.

Contact details

Email: **andrey@shestakovyachtsales.com**

Web: shestakovyachtsales.com/en/

Telephones

USA: **+1(954)274-4435**

Office hours

Monday – Saturday: **9:00 - 21:00** EDT

Sunday: **closed**

Address



Harbour Towne Marina, 850 NE 3rd St, STE 213, Dania, FL 33004