

## SAFRA — AZIMUT



**Builder:** [AZIMUT](#)

**Year Built:** 2005

**Model:** Motor Yacht

**Price:** PRICE ON APPLICATION

**Location:** Italy

**LOA:** 86' 11" (26.49m)

**Beam:** 19' 2" (5.83m)

**Min Draft:** 4' 6" (1.35m)

**Max Draft:** 4' 6" (1.35m)

Our experienced yacht broker, Andrey Shestakov, will help you choose and buy a yacht that best suits your needs **Safra — AZIMUT** from our catalogue. Presently, at Shestakov Yacht Sales Inc., we have a wide variety of yachts available on our sale's list. We also work in close contact with all the big yacht manufacturers from all over the world.

If you would like to buy a yacht **Safra — AZIMUT** or would like help answering any questions concerning purchasing, selling or chartering a yacht, please call **+1(954)274-4435**

---

# TABLE OF CONTENTS

---

|                              |    |
|------------------------------|----|
| TABLE OF CONTENTS            | 2  |
| SPECIFICATIONS               | 3  |
| Overview                     | 3  |
| Basic Information            | 5  |
| Dimensions                   | 5  |
| Speed, Capacities and Weight | 6  |
| Accommodations               | 6  |
| Hull and Deck Information    | 6  |
| Engine Information           | 6  |
| PHOTOS                       | 7  |
| CONTACTS                     | 24 |
| Contact details              | 24 |
| Telephones                   | 24 |
| Office hours                 | 24 |
| Address                      | 24 |

---

# SPECIFICATIONS

---

## Overview

---

Safra is an excellent 86s example with arneson drives.

Fully loaded and wanting just the overall maintenance services.

Possible to sell for export, with no VAT.

### *SPECIFICATION*

|                 |                  |
|-----------------|------------------|
| Length:         | 26,49 mt         |
| Beam:           | 5,83 mt          |
| Draft:          | 1,35 mt          |
| Hull Material:  | Fiberglass       |
| Fuel Capacity:  | 7200 lt          |
| Water Capacity: | 1100 lt          |
| Flag:           | ITALY            |
| Location:       | TYRRENIAN<br>SEA |
| Year:           | 2005             |

**LAYOUT**

|         |            |
|---------|------------|
| Cabins: | 4 + 2 CREW |
| Berth:  | 8 + 3 CREW |
| Toilet: | 4 + 1 CREW |

**ENGINE**

|               |                 |
|---------------|-----------------|
| Brand:        | MTU             |
| Model:        | 16V 2000<br>M91 |
| Power:        | 2 X 2000 HP     |
| Engine hours: | 900             |
| Trasmission:  | SHAFT<br>DRIVE  |
| Fuel:         | Diesel          |

**ELETTRIC**

12V - 24V -220V - Air Conditioning - Heating system - Generator 2 x 20 Kw

## ***EQUIPMENT***

GPS/Plotter Raymarine - Autopilot Raymarine - Radar Raymarine - VHF Raymarine

## ***ACCESSORIES***

Bow thruster - Stern thruster - Bathing ladder - Galley 4 fire - Bow sun cushion - Cushions - Fridge - Freezer - Oven - Icemaker - Washing machine - Dish washer - DVD - Decoder sky - Stereo sound system - Sat tv system - TV n° 5 - Water pump - Garage - Stern mooring winch - Gangway - CD player - Coverings - Waste holding tank - Battery charger - Fridge in cockpit - grill in cockpit - Searchlight - Water heater - Teak platform - Teak cockpit - Teak sideways - Red hull - Salon wood floor - Bose sound system - Centralized vacuum system - Iboat - Safe.

## **Basic Information**

---

**Category:** Motor Yacht

**Model Year:** 2005

**Year Built:** 2005

**Country:** Italy

## **Dimensions**

---

**LOA:** 86' 11" (26.49m)

**Beam:** 19' 2" (5.83m)

**Min Draft:** 4' 6" (1.35m)

**Max Draft:** 4' 6" (1.35m)

---

## Speed, Capacities and Weight

---

**Displacement:** 136686.60244 Pounds

**Water Capacity:** 290.5892572 Gallons

**Fuel Capacity:** 1902.0387744 Gallons

---

## Accommodations

---

**Total Cabins:** 4

**Total Berths:** 8

**Total Heads:** 4

**Crew Cabin:** 2

**Crew Berths:** 3

**Crew Heads:** 1

---

## Hull and Deck Information

---

**Hull Material:** Fiberglass

---

## Engine Information

---

**Engines:** 2

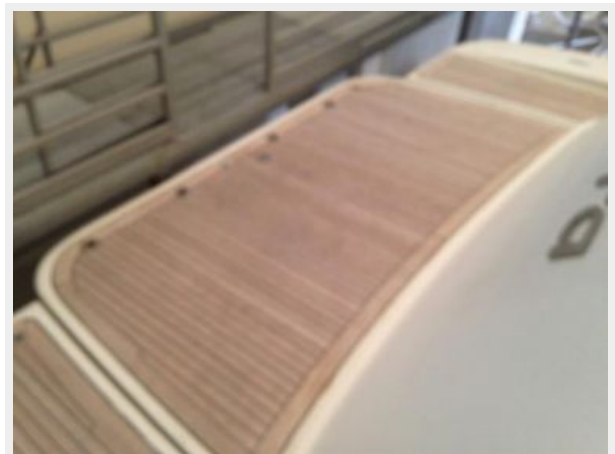
**Manufacturer:** MTU

**Model:** 16V 2000 M91

**Fuel Type:** Diesel

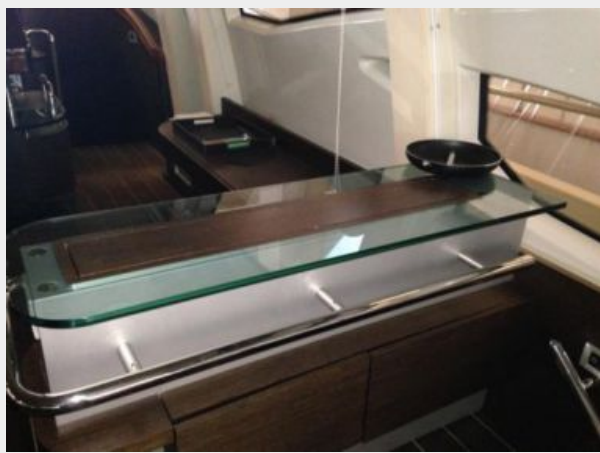
# PHOTOS

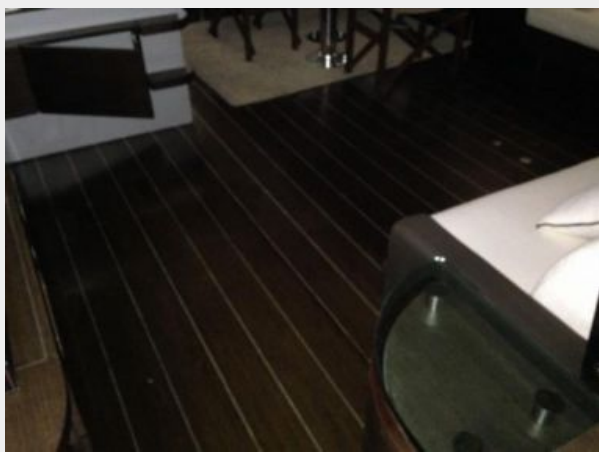


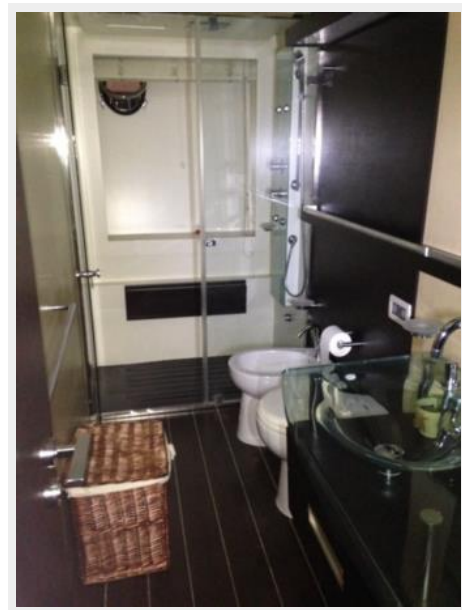


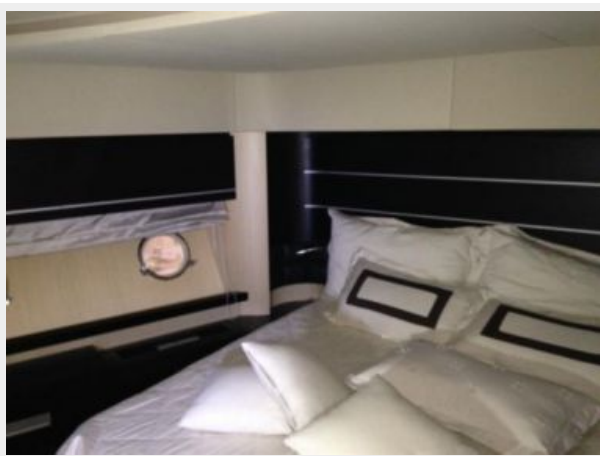
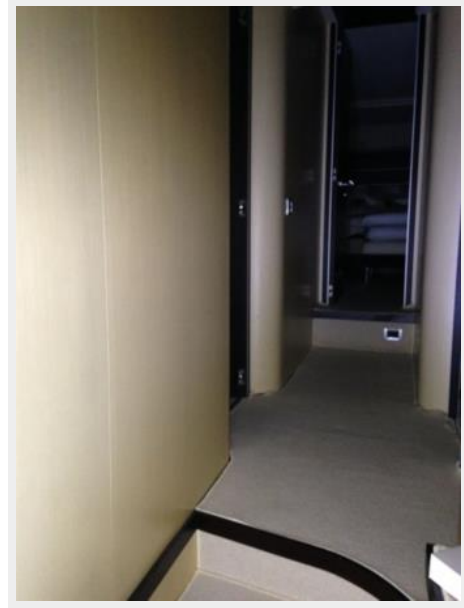


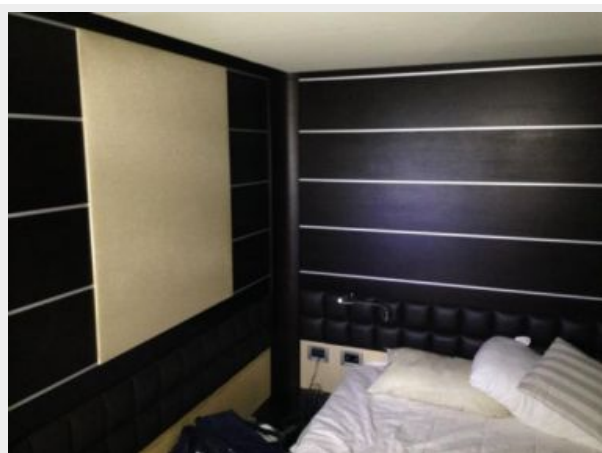
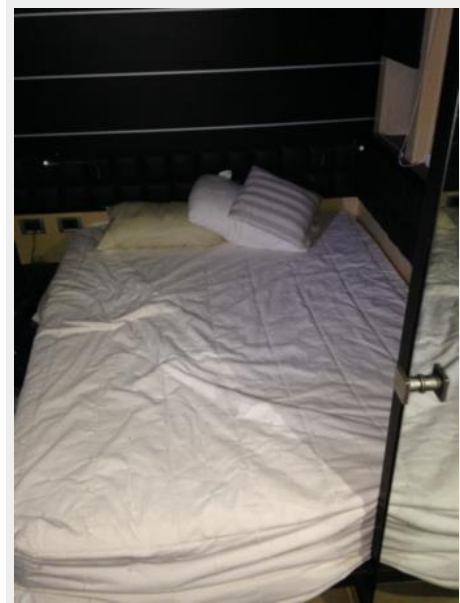
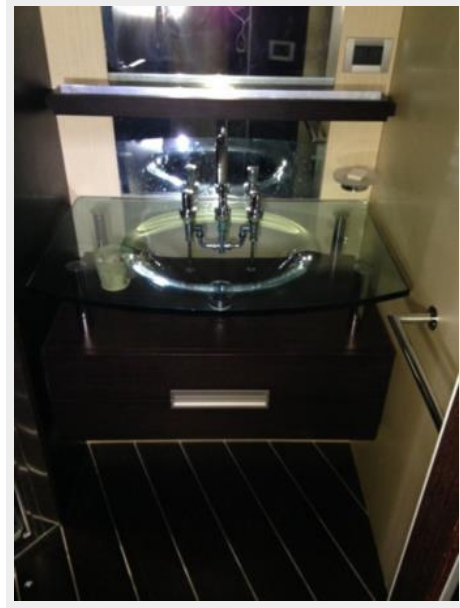


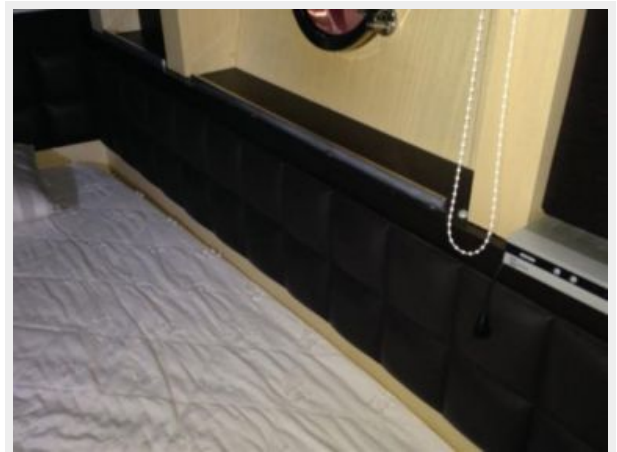
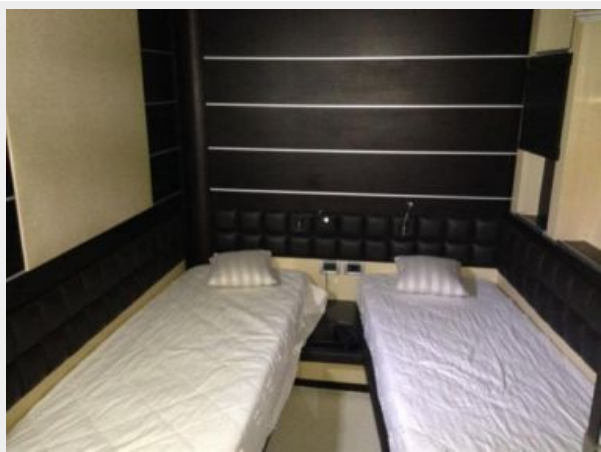
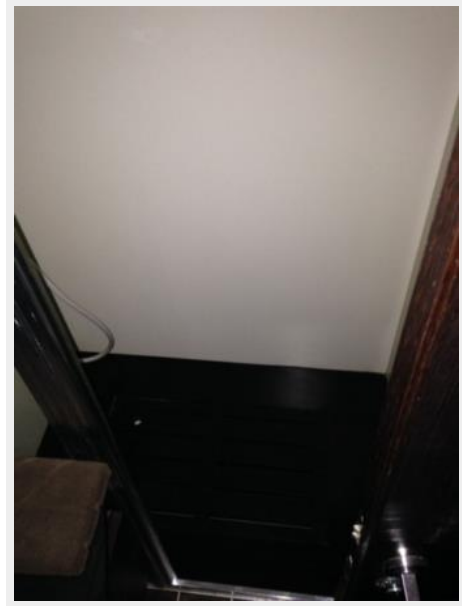


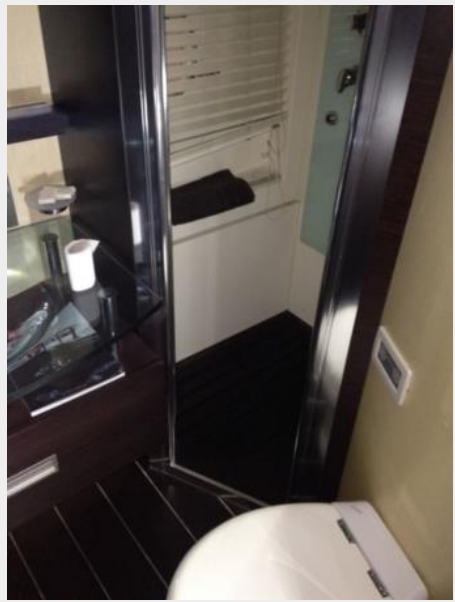
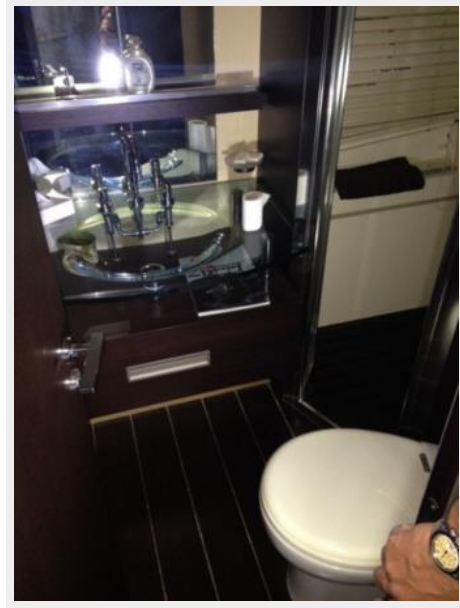






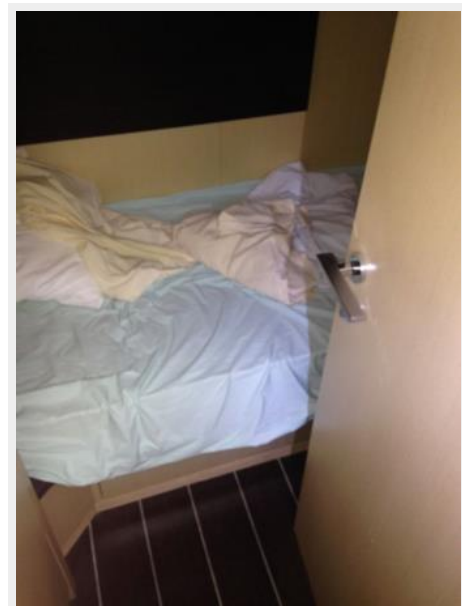


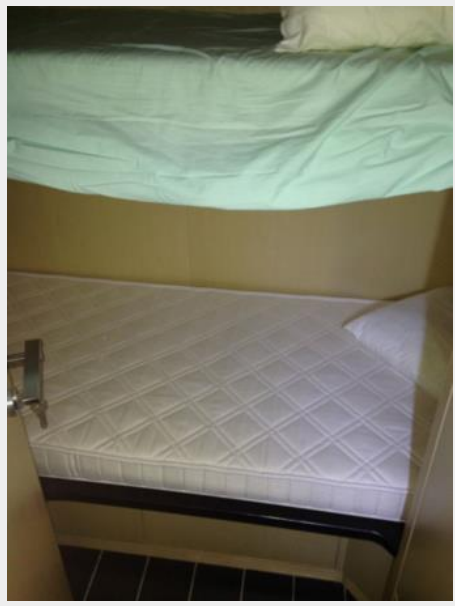




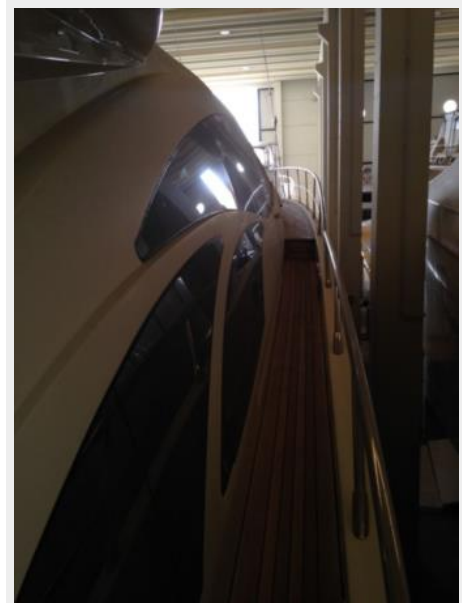
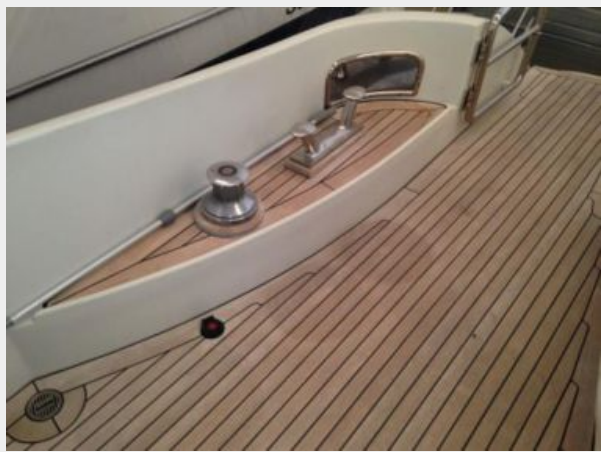
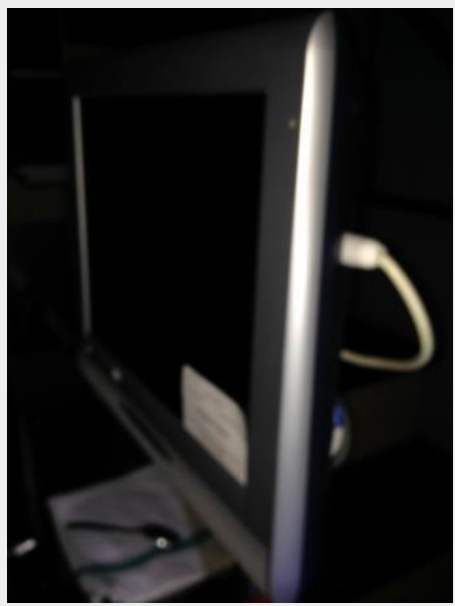


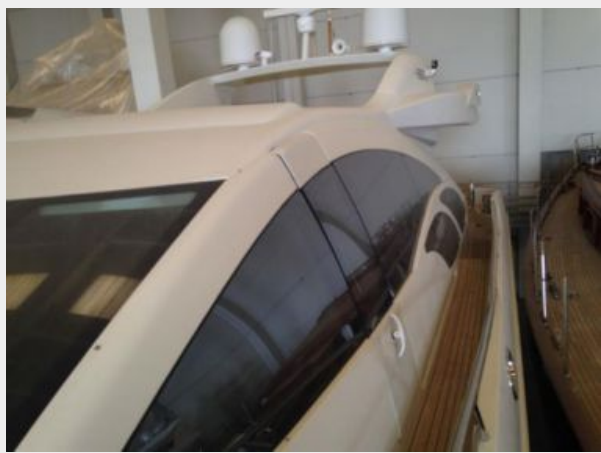














---

# CONTACTS

---

Andrey Shestakov, leading yacht broker of the sales department of Shestakov Yacht Sales Inc. Shestakov Yacht Sales Inc., the official representative of the Miami/Fort Lauderdale FL headquarters.

---

## Contact details

---

Email: [andrey@shestakovyachtsales.com](mailto:andrey@shestakovyachtsales.com)

Web: [shestakovyachtsales.com/en/](http://shestakovyachtsales.com/en/)

---

## Telephones

---

USA: +1(954)274-4435

---

## Office hours

---

Monday – Saturday: **9:00 - 21:00** EDT

Sunday: **closed**

---

## Address

---



Harbour Towne Marina, 850 NE 3rd St,  
STE 213, Dania, FL 33004