

## PINNACLE — HYLAS



**Судостроитель:** HYLAS

**Год постройки:** 1992

**Модель:** Cutter

**Цена:** **ЦЕНА ЯХТЫ ПО ЗАПРОСУ**

**Местонахождение:** United States

**Длина общая:** 49' 0" (14.94m)

**Ширина:** 14' 3" (4.34m)

**Макс. осадка:** 6' 0" (1.83m)

Купить Pinnacle — HYLAS а также выбрать подходящую вам яхту из нашего каталога яхт вам поможет опытный яхтенный брокер Андрей Шестаков. На сегодняшний день компания Shestakov Yacht Sales Inc. имеет большое количество яхт в собственном списке продаж, а также тесно сотрудничает со всеми крупными яхтенными производителями по всему миру.

Для того чтобы купить яхту Pinnacle — HYLAS а также проконсультироваться по любому вопросу связанному с покупкой, продажей, чартером яхт позвоните по телефону **+7(918)465-66-44**.

# ОГЛАВЛЕНИЕ

---

ОГЛАВЛЕНИЕ	2
ХАРАКТЕРИСТИКИ	4
Обзор	4
Основная информация	4
Размеры	4
Скорость, вместимость и масса	5
Размещение	5
Корпус и палуба	5
Информация о двигателе	5
ПОДРОБНОЕ ОПИСАНИЕ	6
Accommodations	6
Galley	6
Heads	7
Electrical Equipment	7
Electronics & Navigation	7
Hull & Deck	7
Deck Equipment	8
Sails and Rigging	8
Mechanical	8
Other	9
Исключения	9
Отказ от ответственности	9
ФОТОГРАФИИ	10
КОНТАКТЫ	19
Контактная информация	19
Телефоны	19
Время работы	19
Адрес	19



# ХАРАКТЕРИСТИКИ

## Обзор

**RECENT \$20K PRICE REDUCTION MAKE THIS A GREAT OPPORTUNITY.** The Hylas 49, designed by Sparkman & Stephens, is regarded as one of the finest offshore sailing yachts available. As a modest refinement to the successful Stevens 47, the 49 features an improved deck layout with a more comfortable cockpit, a nicely integrated swim platform, and a more luxurious 3-cabin interior that we've all come to associate with Hylas. They are swift, solid and comfortable boats capable of going anywhere in safety and style. The rig is ICW capable, and the modest draft of 6' is suitable for Southern cruising and the Bahamas. There is a reason the 49 has been in continuous production since 1992. She is quite nearly the perfect boat!

*Pinnacle* is an excellent example of this model. She is well equipped for long-term cruising and has received exceptional care from her proud owners. *Pinnacle* has been in the Northeast since 2002 where she has been used seasonally and tucked away under cover each winter (with the exception of one trip to the Bahamas in 2011). Don't miss this opportunity to own one of these fantastic yachts, at a small fraction of a new build.

## Основная информация

**Тип судна:** Cutter

**Подкатегория:** Center Cockpit

**Модельный год:** 1992

**Год постройки:** 1992

**Страна:** United States

## Размеры

**Длина общая:** 49' 0" (14.94m)

**Длина по ватерлинии:** 39' 6" (12.04m)

**Длина палубы:** 48' 10" (14.88m)

**Ширина:** 14' 3" (4.34m)

**Макс. осадка:** 6' 0" (1.83m)

**Трапы:** 63' 5" (19.33m)

## Скорость, вместимость и масса

---

**Водоизмещение:** 32000 Pounds

**Вместимость воды:** 210 Gallons

**Вместимость сточного бака:** 15 Gallons

**Объем топливного бака:** 180 Gallons

## Размещение

---

**Всего кают:** 3

## Корпус и палуба

---

**Материал корпуса:** Fiberglass

**Материал палубы:** Fiberglass Sandwich

**Комплектация корпуса:** Fin & Skeg

**Цвет корпуса:** white

**Отделка корпуса:** Stainless Steel

**Дизайнер корпуса:** Sparkman & Stephens

## Информация о двигателе

---

**Производитель:** Yanmar

**Модель:** 4JH2TE

**Тип двигателя:** Inboard

**Тип топлива:** Diesel

---

# ПОДРОБНОЕ ОПИСАНИЕ

---

## Accommodations

---

Pinnacle features a luxurious 3-cabin interior with total accommodations for 8. The exquisite Queen Long craftsmanship and varnished teak interior offers a classic, warm feel, while the 10 opening ports, large fixed ports, and 6 overhead hatches let in plenty of light and air. The 3-zone heat/AC, and well-located cabin fans will keep you comfortable, and the 6kw genset will run everything you need while you're out there. Overhead panels have been replaced where needed, and lighting has been updated with 14 new cabin lights.

On stepping below, you enter the main saloon which features a rounded L-shaped settee to port and a settee to starboard that converts to a large single/small double berth. There is a varnished drop-leaf dining table that accommodates port and starboard seating for up to 8. The table includes a large built-in dry storage locker. Nicely finished shelves and cabinets are outboard of both port & starboard settees, with massive storage compartments behind. There is a custom liquor locker to port and a HD TV on the main bulkhead to starboard. The beautiful ship's clock, barometer and oil lamp are included.

The spacious galley is aft to starboard in the walkthrough to the aft cabin. To port is the nav station followed by the aft head.

Continuing aft is a stunning master stateroom featuring a centerline queen with beautifully finished drawers and lockers outboard and below. To starboard is a changing bench and a hanging locker, and to port is a vanity hidden among several drawers & lockers, and private access to the aft head.

Guest cabins are forward of the main saloon. There is a spacious V-berth forward followed by a private guest cabin to port with a pull-out double berth. Both cabins have ample storage capacity, opening ports, and overhead hatches. Across the guest cabin to starboard is the forward head with shower.

## Galley

---

The galley is located in the starboard walkthrough. Features include:

Force 10 4-burner LPG stove & oven, 2006. Grunert cold-plate refrigeration (3 compartments), powered by genset & shore power, 2004, with top and front load. Magic Chef microwave. Raritan 6 gallon H/W heater 2006. Double SST sink with H/C pressure water and F/W foot pump, located on counter behind companionway steps. Sink replaced with a larger capacity model in 2010. Galley counters replaced 2010. Jabsco water pump 2003, with new spare. Custom pull-out cutting board. Spice rack & Knife storage. Massive storage capacity in overhead lockers and drawers. Fume detector for propane and carbon monoxide.

---

## Heads

---

Both forward and aft heads feature:

Heavy duty Groco K toilets. 15 gallon holding tanks, plastic. Y-valves to support deck pump-out, overboard pump-out, and offshore O/B discharge. Shower with dedicated sump. Aft head includes a fold-down shower seat.

---

## Electrical Equipment

---

(2) 8D batteries servicing house and engine start, 2016 (1) dedicated battery forward for the anchor windlass Shore power system and outlets for both 115V, 30-amp US, and 220V, 50-amp, European Independent battery charger, shore power Xantrex Freedom 15 inverter/charger Xantrex Link 2000 battery monitor at nav station Cruisair Heat & AC, three zones Deck plug-in for TV and phone NextGen 6kw generator (2015) powered by 12hp Kubota diesel with 1183 hours (2004) burning .25 gallons/hour HD color 24" Insignia TV with remote Digital Glomex TV antenna on mast above Radar

---

## Electronics & Navigation

---

COCKPIT/HELM: Raymarine ST 60 Wind. Raymarine ST 60 Depth. Raymarine ST 60 Speed/log. Raymarine C90/w color chartplotter 2012/2015 Raymarine 650 Class B AIS Transceiver Digital Yacht SPL 2000 AIS Splitter Raymarine Digital HD42D 48 mile color radar, w/ 24" Radome. Raymarine ST6001 Smartpilot Autopilot. Standard Horizon RAM mic. Ritchie compass. Tigger dual electric horn

NAV STATION: Garmin 176C chartplotter. Raymarine ST60 Tri-data display for wind/depth/speed, 2006. Standard Horizon Intrepid VHF. Icom IC-M802 SSB radio w/ automatic tuner, 2006. JVC stereo system.

---

## Hull & Deck

---

Hull is white awlgrip w/ double blue boot stripes and a gold shear line. The hull profile features a long fin keel with a full skeg hung rudder. Hull construction is hand-laid solid fiberglass and the ballast is internally encapsulated lead with a 45% ballast to displacement ratio. The deck is balsa cored, and solid in areas supporting deck fittings. The molded non-skid is light grey. Rudder bearings replaced in 2015. Steering cables replaced in 2003.

TANKS: Fuel: 3 Stainless tanks totaling 180 gallons Water: 4 Stainless tanks totaling 210 gallons Holding: Each head has a dedicated 15 gallon plastic holding tank

---

## Deck Equipment

---

**GROUND TACKLE:** Double SST bow rollers extending well forward of the forestay. 66 lb. Bruce anchor with 35' SST chain and Nylon 3-strand rode. Secondary Danforth anchor. Maxwell 2200 Vertical Windlass controlled from the cockpit, also with up/down foot switches on the foredeck. Protective Stainless Steel plating over foredeck. Anchor locker accessible through deck hatches - aft bulkhead (between anchor locker and forward cabin) was replaced and reinforced in 2014 to be stronger than new. Salt water wash-down.

**DECK ACCESSORIES:** Liferaft mounting brackets just forward of main mast. Two polished chrome cowl vents on varnished teak dorades forward, with two more on the aft deck. Large hatches over forward & aft cabins replaced 2003. Fold-up SST/Teak Boarding Ladder switchable between port & starboard boarding gates. Stern swimming platform with integral storage locker and fold-down boarding ladder. Forespar Dinghy Davits. Outboard motor lift crane on aft deck. Edson Outboard motor mount on stern rail. SST gas barbeque mounted on stern rail with blue canvas cover Twin Lazarette lockers on aft deck. Fresh water wash-down on swim platform

**COCKPIT:** Large secure center cockpit with accommodations for 8. Wheel steering on Edson Pedestal Varnished teak drop-leaf cockpit table with teak drink holder above. Cockpit cushions. Teak grate over cockpit sole. Cockpit speakers. **CANVAS:** Sunbrella cover over helm Sunbrella cover over liferaft Stamoid bimini and dodger "Captain's Blue" with side curtains forming full enclosure, 2011. Navy Sunbrella mainsail cover

---

## Sails and Rigging

---

**SAILS:** Genoa; Dacron 8oz high-cut, 125%. 2004. Staysail: Dacron 8oz, 2004. Older 150% Genoa rarely used. Mainsail: Dacron 8oz, 2004, with Dutchman flaking system. Storm Jib. Storm Triesail with dedicated track on mast.

**RIGGING:** Keel-stepped double-spreader Aluminum mast. Cutter rig with Harken furlers for both staysail and jib. Forespar rigid boom vang.

**WINCHES:** Bariant 36 2-sp S/T primaries (2). Bariant 27-48 S/T Secondaries (2) . Bariant 27-48 S/T for Mainsheet (1). Bariant 24-45 S/T halyard winches on mast (2). Bariant 24 on mast. Bariant 22 on mast. 28 volt Milwaukee Drill with winch bit used on all self tailing winches to electrify

---

## Mechanical

---

Well maintained Yanmar 4JH2TE 66hp turbo diesel, 1992. New engine mounts 2016. Fresh water pump and hoses replaced 2009. Propeller: 20" 3-blade MaxProp. Both cutlass bearings



replaced 2015. New PYI dripless shaft seal 2015. Genset includes a Kubota 12hp diesel (2004) and a NextGen generator (2015).

## Other

---

SAFETY GEAR: Avon 6-man offshore liferaft , older w/ expired certification Flares 2 Horseshoe floats with strobe lights EPIRB PFDs

MISCELANEOUS: 4 large bumpers with fleece covers 6 dock lines Barometer & Ship's clock Oil lamp in main cabin

NOTE: owner's personal items are not included.

## Исключения

---

При продаже яхты исключаются личные вещи владельца.

## Отказ от ответственности

---

Компания предоставляет описание судна или яхты добросовестно, но не может гарантировать точность этой информации, а также не ручается за техническое состояние. Покупатель должен проинструктировать своих агентов или оценщиков исследовать представленную информацию более подробно, по собственному желанию. Продажа судна или яхты, изменение цены или снятие с продажи будет происходить без предварительного уведомления.

# ФОТОГРАФИИ









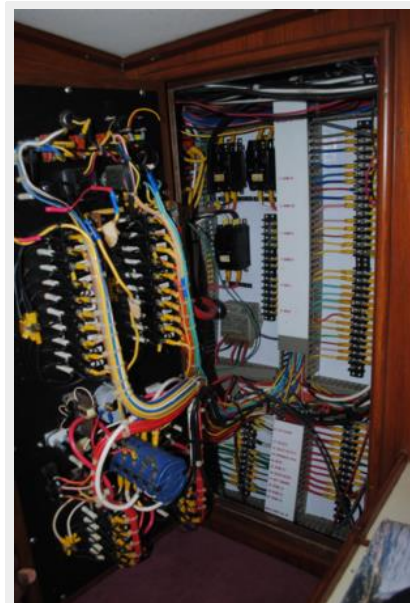


















# КОНТАКТЫ

---

Андрей Шестаков (Andrey Shestakov) – ведущий яхтенный брокер отдела продаж яхт и судов компании Shestakov Yacht Sales Inc. Официальный представитель Shestakov Yacht Sales Inc. для русскоговорящих клиентов в центральном офисе компании в Майами/Форт Лодердейл/Флорида/США.

## Контактная информация

---

Email: [andrey@shestakovyachtsales.com](mailto:andrey@shestakovyachtsales.com)

Web: [shestakovyachtsales.com](http://shestakovyachtsales.com)

## Телефоны

---

Краснодарский край: **+7(918)465-66-44**

США, Майами, Флорида: **+1(954)274-4435**

## Время работы

---

Понедельник – Суббота: **9:00 - 21:00**  
EDT

Воскресенье: **Закрито**

## Адрес

---



Harbour Towne Marina, 850 NE 3rd St,  
STE 213, Dania, FL 33004