

ONE SMALL STEP — VIKING



Судостроитель: VIKING

Год постройки: 1998

Модель: Катер для спортивной рыбалки

Цена: **ЦЕНА ЯХТЫ ПО ЗАПРОСУ**

Местонахождение: United States

Длина общая: 55' 0" (16.76m)

Ширина: 17' 3" (5.26m)

Макс. осадка: 4' 10" (1.47m)

Крейс. скорость: 30 Kts. (35 MPH)

Макс. скорость: 35 Kts. (40 MPH)

Купить **One Small Step — VIKING** а также выбрать подходящую вам яхту из нашего каталога яхт вам поможет опытный яхтенный брокер Андрей Шестаков. На сегодняшний день компания **Shestakov Yacht Sales Inc.** имеет большое количество яхт в собственном списке продаж, а также тесно сотрудничает со всеми крупными яхтенными производителями по всему миру.

Для того чтобы купить яхту **One Small Step — VIKING** а также проконсультироваться по любому вопросу связанному с покупкой, продажей, чартером яхт позвоните по телефону **+7(918)465-66-44**.

ОГЛАВЛЕНИЕ

ОГЛАВЛЕНИЕ	2
ХАРАКТЕРИСТИКИ	4
Обзор	4
Основная информация	4
Размеры	4
Скорость, вместимость и масса	4
Размещение	4
Корпус и палуба	5
Информация о двигателе	5
ПОДРОБНОЕ ОПИСАНИЕ	6
Machinery	6
Safety Equipment	6
Electrical System	6
Electronics	6
Appliances	7
Tower	7
Flybridge	7
Below Helm	8
Flybridge Hardtop	8
Foredeck	9
Decks and Superstructure	9
Cockpit	9
Lazarette	10
Salon	10
Galley/Dinette	10
Guest Stateroom, Bow	11
Guest Head, Forward	11
Master Stateroom	11

Master Head	12
Guest Stateroom, Starboard	12
Guest Head, Starboard	12
Companionway	13
Under Companionway Sole	13
Engine Room	13
Исключения	14
Отказ от ответственности	14
ФОТОГРАФИИ	15
КОНТАКТЫ	24
Контактная информация	24
Телефоны	24
Время работы	24
Адрес	24

ХАРАКТЕРИСТИКИ

Обзор

This boat has been maintained to the highest standards by her current owner and captain. Call today to inspect for yourself!

Less than 100 hours since engine rebuilds in 2015.

Основная информация

Тип судна: Катер для спортивной рыбалки

Подкатегория: Convertible

Модельный год: 1998

Год постройки: 1998

Страна: United States

Верх: Hardtop W/Tower

Открытая палуба мостика: Да

Кубрик: Да

Размеры

Длина общая: 55' 0" (16.76m)

Ширина: 17' 3" (5.26m)

Макс. осадка: 4' 10" (1.47m)

Скорость, вместимость и масса

Крейс. скорость: 30 Kts. (35 MPH)

Макс. скорость: 35 Kts. (40 MPH)

Водоизмещение: 68000 Pounds

Вместимость воды: 250 Gallons

Вместимость сточного бака: 74 Gallons

Объем топливного бака: 1322 Gallons

Размещение

Всего кают: 4

Всего ком. состава: 3

Корпус и палуба

Материал корпуса: Fiberglass

Информация о двигателе

Двигатели: 2

Производитель: MAN

Модель: D2842LE406

Тип двигателя: Inboard

Тип топлива: Diesel

ПОДРОБНОЕ ОПИСАНИЕ

Machinery

- Twin MAN D2842LE406, 12-cylinder diesel engines, total top end rebuilds, 2015
- Fresh water cooling system
- Racor dual filters
- Mathers electronic controls
- Watermaker, Inc. watermaker
- (5) Electric/automatic bilge pumps
- (2) Sump pumps
- Headhunter Mach fresh water pressure system

Safety Equipment

- Portable extinguishers
- 43.3-lb. FM200 built-in system
- Viking 6-person liferaft
- Assorted life jackets
- 6" Bell
- Flares
- Electric/air horn

Electrical System

- Onan 20 kW generator
- Mastervolt 24V battery charger
- (4) 12V Engine batteries
- 24V DC lighting
- 110V AC lighting
- Electrical panel in salon and flybridge

Electronics

- Furuno 72-mile radar
- ICOM IC-M304 VHF
- (2) Standard Horizon VHF's
- KVH Trac Vision M5
- Furuno NavNet 3D GPS
- Northstar 952X GPS

- Furuno FCV-1100L depth sounder
- Robertson AP300X auto pilot
- (2) Ritchie magnetic compasses
- ACR spot light

Appliances

- Kenmore refrigerator
- Kenmore 4-burner stove
- Kenmore washer/dryer
- Sharp Microwave
- Raritan 20-gallon electric water heater
- Eskimoo Chipper icemaker; galley refrigerator
- Vissani wine cooler
- Cruisair air conditioning

Tower

- Non-skid fiberglass deck
- Hard top
- Mid-rigger
- (2) Quartz lights, aft
- Bolster pad
- Ritchie compass
- Aluminum steering wheel
- Micro Commander electronic engine controls
- ICOM IC-M304 VHF radio
- Forward navigation light
- VHF antenna, port and starboard
- KVH Trac Vision M5 satellite TV antenna
- Northstar 952X GPS chart plotter

Flybridge

- Fiberglass hard top
- 3/4 Enclosure curtains
- (2) Overhead lights
- Furuno FCV-1100L color video sounder
- Furuno T-2000 sea water temperature gauge
- Furuno GP-1650W Mark II plotter
- Furuno 72-mile radar

- Furuno NAV NET 3D GPS plotter
- Robertson AP300X autopilot
- Datamarine International Offshore digital
- Datamarine Navigator speed/distance indicator
- Air conditioning air handler, forward
- Micro Commander clutch and throttle controls
- Bench seat, port and starboard with storage
- (2) Fuel tank gauges
- Trim tab controls
- Aluminum steering wheel
- Mounted helm chair with cover
- Mounted companion chair with cover
- Clarion stereo
- Northstar Navigator behind helm
- (2) Standard Horizon VHF radios
- ACR search light control

VDO engine instrumentation: tachometer, transmission oil pressure, volts, engine water temperature, engine oil pressure, and exhaust pyrometers.

Panel, at helm with indicator lights for:

- Windlass
- Engine exhaust temperature
- Engine room temperature
- (3) Bilge pumps
- (2) Halon discharge
- (2) High water bilge water alarms
- Generator on
- Blowers
- Synchronizer
- Engine oil temperature
- Gear oil temperature
- Fuel transfer

Below Helm

- Autopilot drive pump
- DC Circuit panel to electronics

Flybridge Hardtop

- ACR search light

- Radar scanner

Foredeck

- Non-skid fiberglass deck
- Teak toe rail
- (2) Bow cleats
- (2) Spring cleats
- Danforth aluminum anchor with approximately 15' of chain and 200' of 3/4" nylon rode
- (3) Deck hatches to accommodation areas
- Waste outlet, port forward

Decks and Superstructure

- Fiberglass decks
- Spring cleat, port and starboard
- (2) Diesel fills, starboard
- Water fill, port
- Triple-spreader rigger, port and starboard
- Grab rail, port and starboard, above salon window

Cockpit

- Teak over fiberglass deck
- 8-Step ladder to bridge, port
- Teak covering boards
- Recessed gunwale rod holders, port and starboard
- Transom door with gunwale breakaway section, starboard
- (2) Stern cleats
- Light in overhang, port and starboard
- Sea water wash down, port
- Fresh water wash down, port
- Dockside water connector, port
- Outboard storage locker, port and starboard
- Pedestal mounted fighting chair
- Built-in cabinetry, port, with deep well freezer, drink box, entrance to engine room, and (4) tackle drawers
- Built-in cabinetry, starboard
- Cablemaster 50-amp retractable power cord, starboard
- 50-amp 125/250-volt shore power connector, port
- Under gunwale courtesy light, port, starboard, and aft

- Drink box in step to salon

Lazarette

- Hydraulic steering actuator
- (2) Electric/manual bilge pumps
- Trim tab reservoir and control unit
- Fiberglass fuel tank
- Sump box with electric/automatic pump
- Fish box macerator pump
- Autopilot feedback sensor
- Recessed fish box
- Recessed live well
- Dripless rudder seals

Salon

- Laminate sole
- Fabric-covered accent panels at windows
- Recessed overhead lights
- Pleated shades
- Custom L-shape sofa, port, with throw pillows and storage
- Galley/salon bar
- AC and DC main electrical distribution panels
- Generator start/stop control
- Viking 6-person life raft, next inspection due August 2018

Entertainment:

- Bose stereo
- DirectTV satellite TV receiver
- Samsung TV
- Sony Blu-Ray disc player

Galley/Dinette

- Laminate sole
- Dinette, starboard forward, with custom teak table, J-shaped bench seat with under-bench storage
- (3) Bose stereo speakers
- VDO water tank gauge, port
- AC and DC circuit boards, port

- Molded sink with hot/cold water faucet, instant hot water dispenser, garbage disposal
- Corian counters
- Pleated shades
- Kenmore 4-burner electric stove
- Kenmore refrigerator/freezer with ice and water dispenser
- Sharp Carousel microwave/convection oven
- Exhaust blower
- Vissani wine cooler

Guest Stateroom, Bow

- Carpeted sole
- Recessed overhead lights
- (2) Overhead stereo speakers
- Overhead hatch with screen
- Upper and lower single berth, port and starboard, with filter cushion
- Reading light at each berth
- Built-in cabinetry, port and starboard
- Cedar-lined hanging locker with light, port
- Cruisair SMX air conditioning control
- Mirrored forward bulkhead
- 24" Life ring
- Fiberglass holding tank under stateroom

Guest Head, Forward

- Entrance via bow guest stateroom, starboard guest stateroom, and companionway
- Tiled sole
- Mirrors overhead
- Vanity with molded sink with hot and cold water faucet, storage locker below
- VacuFlush head
- Medicine locker with mirrored doors and (3) recessed lights
- (2) Overhead lights
- Shower stall with light overhead, bi-fold glass door, adjustable telephone-type shower head with adjustable wall mount, hot/cold water faucet
- Blower

Master Stateroom

- Queen island berth with rope lighting
- Built-in cabinetry and bureau, port

- Built-in night stand, port and starboard, each with table lamp
- Carpeted sole
- (2) Stereo speakers with rheostat
- Recessed lights
- Recessed soffit lights, (4) aft, and (3) outboard
- Overhead hatch with screen
- Mirrored aft bulkhead
- Cruisair SMX air conditioning control
- Built-in cabinetry and bureau, port
- Vanity, starboard forward, with (2) mirrors, (3) lights, and cabinets
- Samsung color TV
- Hanging locker with light and cedar paneling

Master Head

- VacuFlush head
- Vanity with molded sink, hot and cold water faucet, and storage locker below
- Tiled sole
- Medicine locker with mirrored doors and (3) recessed lights
- (2) Overhead lights
- Shower stall with overhead light, bi-fold glass door, adjustable telephone-type shower handle on host with wall mount, hot/cold water faucet
- Holding tank macerator pump switch under sink

Guest Stateroom, Starboard

- Upper and lower single berths
- (4) Drawer bureau
- Laminate sole
- (4) Overhead recessed lights
- Overhead hatch with screen
- (2) Outboard stereo speakers with volume control
- Samsung TV
- Cruisair SMX air conditioning control
- Cedar-lined hanging locker with light

Guest Head, Starboard

- Raritan toilet

- Mirrored overhead with recessed lights
- Vanity with sink
- Laminate sole

Companionway

- Kenmore washer and dryer
- Central vacuum cleaner under steps with host and attachments
- Laminate sole and steps

Under Companionway Sole

- (2) Electric/automatic bilge pumps
- High water alarm switches
- (3) Head diverter valves
- (2) Sump tanks with pumps
- Holding tank macerator pump
- (2) Head vacuum pumps with tanks

Engine Room

- Total top end engine rebuilds in 2015. Less than 100 hours since. 5400 hours overall total (5300 before rebuild)
- Mastervolt 24V battery charger
- (2) 110V blowers
- (2) DC blowers
- (2) circulating fans
- Shore power inlet breakers
- Diverters off each engine raw water intake for emergency bilge pumping
- (6) Vapor-proof battery cut-off switches (engines, generator, electronics, windlass, ship's service)
- (4) DC lights in safety lens
- (5) Dual-lamp fluorescent light fixture with safety lenses
- Electric/automatic bilge pump
- Racor dual fuel filters to each engine
- Racor fuel filter to generator
- Engine gauges, port and starboard, fuel filter vacuum gauge, engine oil pressure, engine water temperature, digital tachometer
- Dripless shaft seals
- (8) Group 31 maintenance free batteries in covered battery boxes, centerline
- Onan 20 KW generator, starboard aft, with Vernalift muffler, and hour meter

- Oil change pump to engines, generator and gears with manifold
- Fresh water outlet with hose
- Fresh water tank, centerline forward
- Headhunter Mach 5 fresh water pump with accumulator tank
- Water filter
- Raritan 20-gallon hot water tank
- (4) Air conditioning compressors with raw water circulating pump
- 43.3-lb. FM200 cylinder, tag August 2015
- Full Security 3A40CV dry chemical fire extinguisher, tag August 2015
- Charles ISO Boost 50 isolation transformer, starboard
- Charles ISO isolation transformer, port
- (2) Live well circulation pumps
- Fuel oil transfer pump
- Sea water wash down pump
- (2) Cruisair cockpit refrigerator compressors
- Hydraulic steering system reservoir with pressure gauge and filter
- ZF Micro Commander electronic engine control boxes
- (2) Refrigerator raw water cooling pumps
- Eskimo ice chipper compressor unit
- Watermakers Inc. watermaker

Исключения

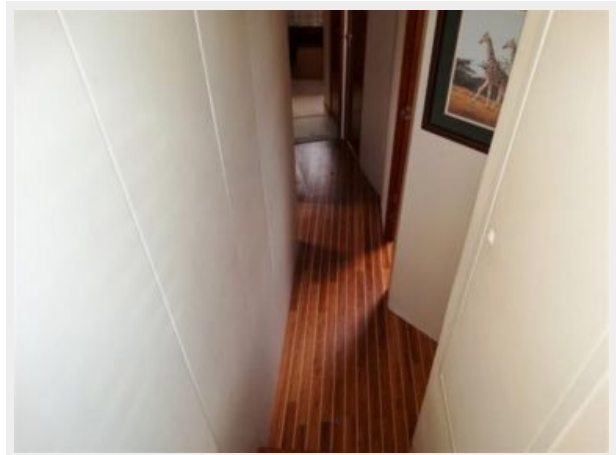
При продаже яхты исключаются личные вещи владельца.

Отказ от ответственности

Компания предоставляет описание судна или яхты добросовестно, но не может гарантировать точность этой информации, а также не ручается за техническое состояние. Покупатель должен проинструктировать своих агентов или оценщиков исследовать представленную информацию более подробно, по собственному желанию. Продажа судна или яхты, изменение цены или снятие с продажи будет происходить без предварительного уведомления.

ФОТОГРАФИИ



















КОНТАКТЫ

Андрей Шестаков (Andrey Shestakov) – ведущий яхтенный брокер отдела продаж яхт и судов компании Shestakov Yacht Sales Inc. Официальный представитель Shestakov Yacht Sales Inc. для русскоговорящих клиентов в центральном офисе компании в Майами/Форт Лодердейл/Флорида/США.

Контактная информация

Email: andrey@shestakovyachtsales.com

Web: shestakovyachtsales.com

Телефоны

Краснодарский край: **+7(918)465-66-44**

США, Майами, Флорида: **+1(954)274-4435**

Время работы

Понедельник – Суббота: **9:00 - 21:00**
EDT

Воскресенье: **Закрето**

Адрес



Harbour Towne Marina, 850 NE 3rd St,
STE 213, Dania, FL 33004