

## COMMOCEAN — OCEAN YACHTS



**Builder:** [Ocean Yachts](#)

**Year Built:** 2001

**Model:** Sport Fisherman

**Price:** PRICE ON APPLICATION

**Location:** United States

**LOA:** 52' 0" (15.85m)

**Beam:** 16' 4" (4.98m)

**Min Draft:** 4' 4" (1.32m)

**Max Draft:** 4' 4" (1.32m)

Our experienced yacht broker, Andrey Shestakov, will help you choose and buy a yacht that best suits your needs commOcean — Ocean Yachts from our catalogue. Presently, at Shestakov Yacht Sales Inc., we have a wide variety of yachts available on our sale's list. We also work in close contact with all the big yacht manufacturers from all over the world.

If you would like to buy a yacht commOcean — Ocean Yachts or would like help answering any questions concerning purchasing, selling or chartering a yacht, please call +1(954)274-4435

# TABLE OF CONTENTS

TABLE OF CONTENTS	2
SPECIFICATIONS	7
Overview	7
Basic Information	7
Dimensions	8
Speed, Capacities and Weight	8
Accommodations	8
Hull and Deck Information	8
Engine Information	8
DETAILED INFORMATION	9
Vessel Walkthrough	9
Recent Upgrades	9
Salon	10
Galley	10
Dinette	11
Master Stateroom	11
Guest Stateroom	11
Crew Stateroom	12
Companionway	12
Flybridge	12
Helm Electronics	12
Cockpit	13
Deck	13
Engine Room	14
Electrical	14
Brokers Remarks	14
Disclaimer	14
Exclusions	15

Disclaimer	15
PHOTOS	16
Salon	16
Galley	16
Master Stateroom	16
Flybridge Helm	16
Salon	16
Salon	16
Salon	17
Dinette	17
Galley	17
Galley	17
Master Stateroom	17
Master Stateroom	17
Master Stateroom	18
Master Stateroom	18
Master Stateroom Vanity	18
Master Stateroom	18
Master Stateroom Head & Shower	19
Master Stateroom Shower	19
VIP Stateroom	19
VIP Stateroom	19
VIP Stateroom	19
VIP Stateroom	19
VIP Head & Shower	20
VIP Stateroom	20
VIP Vanity	20
Guest Cabin	20
Guest Cabin	21

Guest Cabin	21
Guest Cabin	21
Guest Cabin	21
Guest Head	22
Guest Shower	22
Guest Vanity	22
Guest Vanity	22
Steps to Salon & Galley	23
Flybridge Forward Seating & new Costa Clear EZ2CY	23
Flybridge Forward Seating & new Costa Clear EZ2CY	23
Flybridge Forward Seating & new Costa Clear EZ2CY	23
Flybridge Forward Seating & new Costa Clear EZ2CY	23
Flybridge Forward Seating & new Costa Clear EZ2CY	23
New EZ2CY Enclosure 4.2017	24
New EZ2CY Enclosure 4.2017	24
New EZ2CY Enclosure 4.2017	24
New EZ2CY Enclosure 4.2017	24
New EZ2CY Enclosure 4.2017	24
Flybridge Helm	24
Flybridge Stidd Seats	25
Flybridge Helm	25
Flybridge Refrigerator	25
Flybridge Refrigerator	25
Flybridge Electronics	25
CAT Monitors	25
Furuno NAVnet Monitor	26
Robertson AP 20 Autopilot	26
Icom IC-M504 VHF	26
Clarion Stereo	26

Compass	26
Plexiglass Flybridge Hatch	26
Pompanette Fighting Chair	27
Cockpit	27
Pompanette Fighting Chair	27
Swim Platform & Transom Door	27
Freezer, Sink, Tackle Storage & Engine Room Hatch	27
Freezer, Sink, Tackle Storage & Engine Room Hatch	27
Cockpit Controls	28
Scuba Tank Storage	28
Scuba Tank Compressor	28
Dinghy & OB with Covers	28
Boston Whaler 13 Sport GLS	28
Foredeck	29
Mercury 40 HP 4 Stroke 2012	29
Port Engine	29
Starboard Engine	29
1632.2 Starboard Hr Meter 10/27/16	29
1631.7 Port Hr Meter 10/27/16	29
Northern Lights Generator & Sounds	30
Northern Lights Generator	30
296 Genset Hrs. 10/27/16	30
Watermaker	30
AC Compressors	30
Racor Filters & Oil Change System	30
Oil Change System & Fire System	31
Fuel Polishing System	31
1 Profile.jpg	31
CONTACTS	32

---

Contact details	32
Telephones	32
Office hours	32
Address	32

---

# SPECIFICATIONS

---

## Overview

---

Very lightly fished and extremely clean. Used primarily for family cruising.

Owner trading up to larger boat.

Heavily upgraded, refitted and modernized by an experienced yachtsman over the past three years. No expense spared.

Open check book maintained and serviced.

Highly preferred twin Caterpillar 3406 800HP 1652 Hrs

Northern lights 12kw generator 316 Hrs NEW 4/16

Garmin 4212 Plotter

New 3 sided EZ2CY flybridge enclosure New April 2017

Marquipt davit and Boston Whaler 13 Sport GLS tender on bow

Mercury 40hp 4 stroke outboard 2012 (approximately 50 hours on motor)

4,000 PSI SCUBA compressor with fill station and tank locker

Swim platform, dive ladder and hot/cold dive shower in transom

Sea Recovery reverse osmosis water maker

TracVision satellite T.V. system

Fighting chair (in storage)

Outriggers

Live baitwell

---

## Basic Information

---

**Category:** Sport Fisherman

**Sub Category:** Sedan

**Model Year:** 2001

**Year Built:** 2001

**Country:** United States

**Fly Bridge:** Yes

---

## Dimensions

---

**LOA:** 52' 0" (15.85m)

**Beam:** 16' 4" (4.98m)

**Min Draft:** 4' 4" (1.32m)

**Max Draft:** 4' 4" (1.32m)

**MFG Length:** 52' 0" (15.85m)

---

## Speed, Capacities and Weight

---

**Displacement:** 56000 Pounds

**Water Capacity:** 150 Gallons

**Holding Tank:** 55 Gallons

**Fuel Capacity:** 860 Gallons

---

## Accommodations

---

**Total Cabins:** 3

**Total Berths:** 4

**Sleeps:** 6

**Total Heads:** 3

---

## Hull and Deck Information

---

**Hull Material:** Fiberglass

**Hull Configuration:** Modified Deep Vee

**Hull Color:** White

---

## Engine Information

---

**Engines:** 2

**Manufacturer:** Caterpillar

**Model:** 3406

**Engine Type:** Inboard

**Fuel Type:** Diesel



---

# DETAILED INFORMATION

---

## Vessel Walkthrough

---

The 52 Ocean Super Sport is a very capable sport fisherman as well as a luxurious and modern cruising yacht. The Ultraleather upholstery, flooring, wall coverings and headliners are in excellent condition throughout the vessel. The 3 stateroom 3 head layout offers very comfortable accommodations in the amidships master and forward VIP staterooms, both with ensuite head & shower; as well as the port stateroom with over/under bunks and the day head with shower opposite to starboard.

The spacious salon is bright and open and features comfortable seating aft and to port with the entertainment center opposite to starboard. Up 2 very small steps to starboard is the raised dinette with the very functional galley area opposite to port.

The large cockpit is ideal for cruising, fishing, or entertaining. The fighting chair is in storage and the lazarettes have been equipped with a scuba compressor and tank storage. The cockpit also features a 50 amp shore cord on a Glendinning cable reel, aft controls, freezer, sink, tackle storage, transom door, live baitwell, swim platform & hot & cold shower.

The flybridge with hard top with rod holders has a 3 sided enclosure that is new in Nov 2016 (not pictured). There is plenty of flybridge seating forward and to port with the Stidd helm and mate seats located aft. For safety there is a clear Plexiglas hatch above the flybridge ladder.

On the expansive foredeck is the Marquipt davit and Boston Whaler 13 Sport GLS tender with a 2012 Mercury 40HP 4-stroke outboard motor. For cruising and safety there is a bow rail and pulpit with anchor davit and windlass.

commOcean is loaded with excellent equipment, including the 800 HP Caterpillar 3406 motors for good cruising speed and extended trip capacity. The 52 Ocean Super Sport is tops in its class sea keeping capability, cruising amenities, and live aboard accommodations.

---

## Recent Upgrades

---

Approximately \$175,000.00 spent in last three years. All receipts available.

\$25,000 designer interior soft goods renewal, upgrade and modernization was completed in 2013.

New top brand refrigerator and ice maker 5/13

New Northern Lights 12kw generator 4/16

New underwater lights – most powerful in the industry 4/16

New non-skid surfacing throughout 4/16

New Garmin 4212 chart plotter 5/14

New High capacity fuel polisher 5/14

New Stateroom T.V.s 7/16

New clothes washer 7/15

New bait freezer compressor 1/14

New air conditioner compressor 2/16

New fresh water and air conditioner pumps 2/16

New power cord 2/16

New LED lights throughout 1/15

## Salon

---

Teak and holly design flooring with area rug

Tinted windows and doors

L-shaped sofa with storage

Push button locking hardware

Air conditioning with reverse cycle heat

Hi-gloss high-low table

Custom window blinds throughout

Full sound/entertainment system with remote

Flat screen TV

Icom VHF

Central vacuum system

## Galley

---

Corian counter top

Convection/microwave oven

Two burner electric cooktop

Upright refrigerator

Ice maker

Trash compactor

Custom window blinds throughout

Water tank gauge

---

## **Dinette**

---

High gloss adjustable table top

Custom window blinds throughout

---

## **Master Stateroom**

---

Full beam mid-ship with island queen berth and private ensuite head with shower

Separately air conditioned

Entertainment sound system

Flat screen TV

His and hers cedar lined hanging lockers

Clear carpet protector throughout

Central vacuum system

---

## **Guest Stateroom**

---

Forward VIP with island queen berth and private ensuite head with shower

Flat screen TV

Cedar lined hanging locker

Separately air conditioned

Clear carpet protector throughout

Central vacuum system

## **Crew Stateroom**

---

Over/under bunks

Cedar lined hanging locker

Clear carpet protector throughout

Central vacuum system

## **Companionway**

---

Head with enclosed shower

Over/under washer and dryer

Clear carpet protector throughout

Central vacuum system

## **Flybridge**

---

New 3 sided enclosure 10/16 (not pictured)

Stidd helm mate chairs aft

Comfortable forward seating

Full sound system

Refrigerator

Spotlight

High intensity spreader lights

## **Helm Electronics**

---

Raytheon Tridata

Garmin 4212 chart plotter

Furuno NAVnet redundant GPS chart plotter/sonar/fish finder

Simrad Robertson AP20 autopilot

Furuno radar

Icom VHF

Trim Tabs

Engine synchronizer

Trolling valves

## Cockpit

---

Fighting chair

Bait sink

Tackle station with drawers

Bait freezer

Glendinning cable master

Rod holders (4)

Cockpit controls

Transom gate and door

Live baitwell

Freshwater washdown

Raw water washdown

Scuba tank storage and fill locker for six tanks

4,000 PSI SCUBA tank compressor

Hot and cold dive/swim shower

## Deck

---

Foredeck Marquipt 800lb davit

2012 40hp Mercury motor (approximately 50 hours on motor)

Fortress anchor

Lewmar windlass

Fenders and holders

---

## Engine Room

---

Caterpillar 3406 motors (approximately 1652 hours)

Northern Lights 12kw generator (approximately 316 hours)

Oil exchange system

Sea Recovery water maker

High capacity fuel polisher

---

## Electrical

---

New Northern lights 12kw generator 316 Hrs 4/16

AC/DC Panels

50 Amp Shore Cord on Glendinning Cable Reel

---

## Brokers Remarks

---

The 52 Ocean Super Sport is beautiful to look and has a great layout. It is equally good for cruising or fishing. commOcean is in excellent condition and well equipped. She is a "must see" if you are in the market for this type of boat.

---

## Disclaimer

---

The Company offers the details of this vessel in good faith but cannot guarantee or warrant the accuracy of this information nor warrant the condition of the vessel. A buyer should instruct his agents, or his surveyors, to investigate such details as the buyer desires validated. This vessel is offered subject to prior sale, price change, or withdrawal without notice.

---

Mechanical Disclaimer Engine and generator hours are as of the date of the original listing and are a representation of what the listing broker is told by the owner and/or actual reading of the engine hour meters. The broker cannot guarantee the true hours. It is the responsibility of the purchaser and/or his agent to verify engine hours, warranties implied or otherwise and major overhauls as well as all other representations noted on the listing.

## **Exclusions**

---

Owner's personal belongings.

## **Disclaimer**

---

The Company offers the details of this vessel or yacht in good faith but cannot guarantee or warrant the accuracy of this information nor warrant the condition of the vessel. A buyer should instruct his representatives, agents, or his surveyors, to investigate such details as the buyer desires validated. This vessel or yacht is offered subject to prior sale, price change, or withdrawal without notice.

# PHOTOS

**Salon**



**Galley**



**Master Stateroom**



**Flybridge Helm**



**Salon**



**Salon**





**Salon**



**Dinette**



**Galley**



**Galley**



**Master Stateroom**



**Master Stateroom**



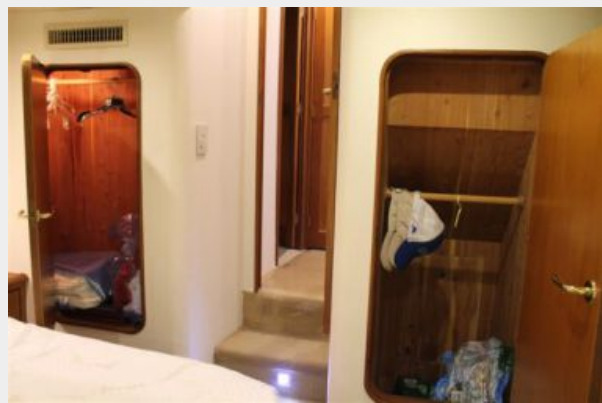
**Master Stateroom**



**Master Stateroom**



**Master Stateroom**



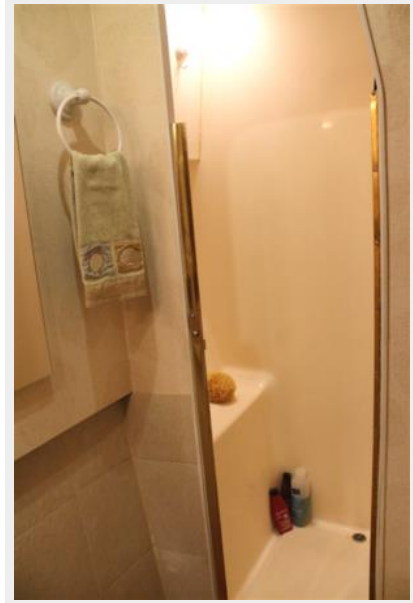
**Master Stateroom Vanity**



### Master Stateroom Head & Shower



### Master Stateroom Shower



### VIP Stateroom



### VIP Stateroom



### VIP Stateroom



### VIP Stateroom



**VIP Stateroom**



**VIP Head & Shower**



**VIP Vanity**



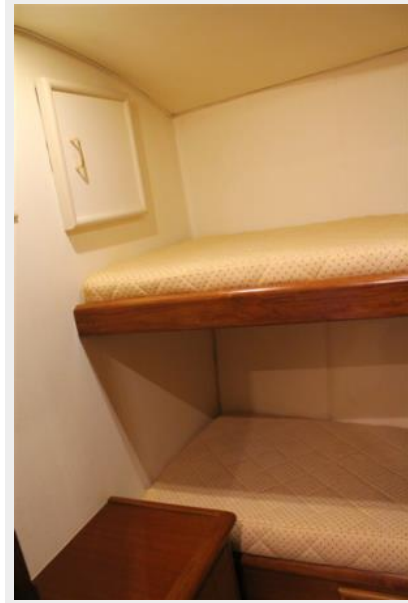
**Guest Cabin**



**Guest Cabin**



**Guest Cabin**



**Guest Cabin**



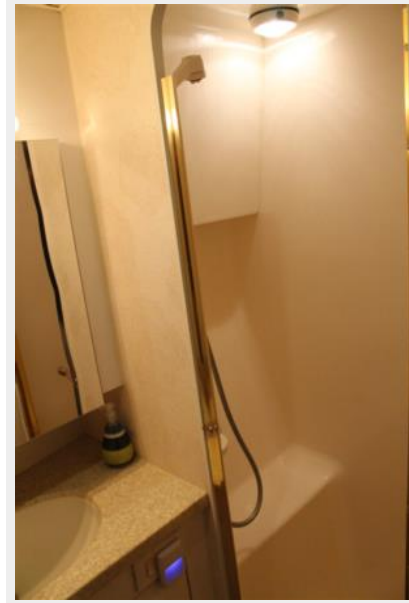
**Guest Cabin**



**Guest Head**



**Guest Shower**



**Guest Vanity**



**Guest Vanity**



### Steps to Salon & Galley



### Flybridge Forward Seating & new Costa Clear EZ2CY



### Flybridge Forward Seating & new Costa Clear EZ2CY



### Flybridge Forward Seating & new Costa Clear EZ2CY



### Flybridge Forward Seating & new Costa Clear EZ2CY



### Flybridge Forward Seating & new Costa Clear EZ2CY



**New EZ2CY Enclosure 4.2017**



**New EZ2CY Enclosure 4.2017**



**New EZ2CY Enclosure 4.2017**



**New EZ2CY Enclosure 4.2017**



**New EZ2CY Enclosure 4.2017**



**Flybridge Helm**





**Flybridge Stidd Seats**



**Flybridge Helm**



**Flybridge Refrigerator**



**Flybridge Refrigerator**



**Flybridge Electronics**



**CAT Monitors**



**Furuno NAVnet Monitor**



**Robertson AP 20 Autopilot**



**Icom IC-M504 VHF**



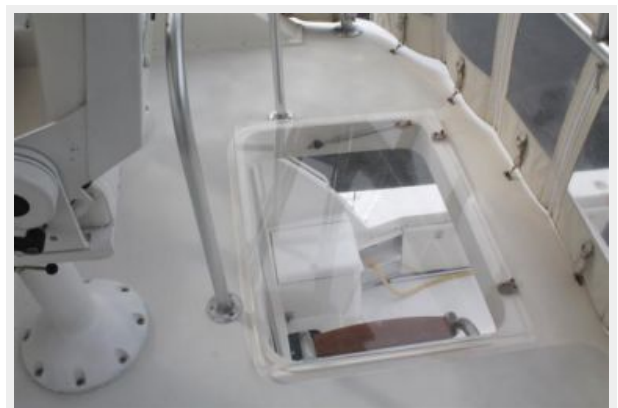
**Clarion Stereo**



**Compass**



**Plexiglass Flybridge Hatch**



**Cockpit**



**Pompanette Fighting Chair**



**Pompanette Fighting Chair**



**Swim Platform & Transom Door**



**Freezer, Sink, Tackle Storage & Engine Room Hatch**



### Cockpit Controls



### Scuba Tank Storage



### Scuba Tank Compressor



### Dinghy & OB with Covers



### Boston Whaler 13 Sport GLS



**Foredeck**



**Mercury 40 HP 4 Stroke 2012**



**Port Engine**



**Starboard Engine**



**1632.2 Starboard Hr Meter 10/27/16**



**1631.7 Port Hr Meter 10/27/16**



### Northern Lights Generator & Sounds



### Northern Lights Generator



296 Genset Hrs. 10/27/16



### Watermaker



### AC Compressors



### Racor Filters & Oil Change System



### Oil Change System & Fire System



### Fuel Polishing System



### 1 Profile.jpg



---

# CONTACTS

---

Andrey Shestakov, leading yacht broker of the sales department of Shestakov Yacht Sales Inc. Shestakov Yacht Sales Inc., the official representative of the Miami/Fort Lauderdale FL headquarters.

---

## Contact details

---

Email: [andrey@shestakovyachtsales.com](mailto:andrey@shestakovyachtsales.com)

Web: [shestakovyachtsales.com/en/](http://shestakovyachtsales.com/en/)

---

## Telephones

---

USA: +1(954)274-4435

---

## Office hours

---

Monday – Saturday: **9:00 - 21:00** EDT

Sunday: **closed**

---

## Address

---



Harbour Towne Marina, 850 NE 3rd St,  
STE 213, Dania, FL 33004