

COMMOCEAN — OCEAN YACHTS



Судостроитель: [Ocean Yachts](#)

Год постройки: 2001

Модель: Катер для спортивной рыбалки

Цена: **ЦЕНА ЯХТЫ ПО ЗАПРОСУ**

Местонахождение: United States

Длина общая: 52' 0" (15.85m)

Ширина: 16' 4" (4.98m)

Мин. осадка: 4' 4" (1.32m)

Макс. осадка: 4' 4" (1.32m)

Купить commOcean — Ocean Yachts а также выбрать подходящую вам яхту из нашего каталога яхт вам поможет опытный яхтенный брокер Андрей Шестаков. На сегодняшний день компания Shestakov Yacht Sales Inc. имеет большое количество яхт в собственном списке продаж, а также тесно сотрудничает со всеми крупными яхтенными производителями по всему миру.

Для того чтобы купить яхту commOcean — Ocean Yachts а также проконсультироваться по любому вопросу связанному с покупкой, продажей, чартером яхт позвоните по телефону **+7(918)465-66-44**.

ОГЛАВЛЕНИЕ

ОГЛАВЛЕНИЕ	2
ХАРАКТЕРИСТИКИ	7
Обзор	7
Основная информация	8
Размеры	8
Скорость, вместимость и масса	8
Размещение	8
Корпус и палуба	8
Информация о двигателе	9
ПОДРОБНОЕ ОПИСАНИЕ	10
Vessel Walkthrough	10
Recent Upgrades	10
Salon	11
Galley	11
Dinette	12
Master Stateroom	12
Guest Stateroom	12
Crew Stateroom	13
Companionway	13
Flybridge	13
Helm Electronics	13
Cockpit	14
Deck	14
Engine Room	15
Electrical	15
Brokers Remarks	15
Disclaimer	15
Исключения	16

Отказ от ответственности	16
ФОТОГРАФИИ	17
Salon	17
Galley	17
Master Stateroom	17
Flybridge Helm	17
Salon	17
Salon	17
Salon	18
Dinette	18
Galley	18
Galley	18
Master Stateroom	18
Master Stateroom	18
Master Stateroom	19
Master Stateroom	19
Master Stateroom Vanity	19
Master Stateroom	19
Master Stateroom Head & Shower	20
Master Stateroom Shower	20
VIP Stateroom	20
VIP Stateroom	20
VIP Stateroom	20
VIP Stateroom	20
VIP Head & Shower	21
VIP Stateroom	21
VIP Vanity	21
Guest Cabin	21
Guest Cabin	22

Guest Cabin	22
Guest Cabin	22
Guest Cabin	22
Guest Head	23
Guest Shower	23
Guest Vanity	23
Guest Vanity	23
Steps to Salon & Galley	24
Flybridge Forward Seating & new Costa Clear EZ2CY	24
Flybridge Forward Seating & new Costa Clear EZ2CY	24
Flybridge Forward Seating & new Costa Clear EZ2CY	24
Flybridge Forward Seating & new Costa Clear EZ2CY	24
Flybridge Forward Seating & new Costa Clear EZ2CY	24
New EZ2CY Enclosure 4.2017	25
New EZ2CY Enclosure 4.2017	25
New EZ2CY Enclosure 4.2017	25
New EZ2CY Enclosure 4.2017	25
New EZ2CY Enclosure 4.2017	25
Flybridge Helm	25
Flybridge Stidd Seats	26
Flybridge Helm	26
Flybridge Refrigerator	26
Flybridge Refrigerator	26
Flybridge Electronics	26
CAT Monitors	26
Furuno NAVnet Monitor	27
Robertson AP 20 Autopilot	27
Icom IC-M504 VHF	27
Clarion Stereo	27

Compass	27
Plexiglass Flybridge Hatch	27
Pompanette Fighting Chair	28
Cockpit	28
Pompanette Fighting Chair	28
Swim Platform & Transom Door	28
Freezer, Sink, Tackle Storage & Engine Room Hatch	28
Freezer, Sink, Tackle Storage & Engine Room Hatch	28
Cockpit Controls	29
Scuba Tank Storage	29
Scuba Tank Compressor	29
Dinghy & OB with Covers	29
Boston Whaler 13 Sport GLS	29
Foredeck	30
Mercury 40 HP 4 Stroke 2012	30
Port Engine	30
Starboard Engine	30
1632.2 Starboard Hr Meter 10/27/16	30
1631.7 Port Hr Meter 10/27/16	30
Northern Lights Generator & Sounds	31
Northern Lights Generator	31
296 Genset Hrs. 10/27/16	31
Watermaker	31
AC Compressors	31
Racor Filters & Oil Change System	31
Oil Change System & Fire System	32
Fuel Polishing System	32
1 Profile.jpg	32
КОНТАКТЫ	33

Контактная информация	33
Телефоны	33
Время работы	33
Адрес	33

ХАРАКТЕРИСТИКИ

Обзор

Very lightly fished and extremely clean. Used primarily for family cruising.

Owner trading up to larger boat.

Heavily upgraded, refitted and modernized by an experienced yachtsman over the past three years. No expense spared.

Open check book maintained and serviced.

Highly preferred twin Caterpillar 3406 800HP 1652 Hrs

Northern lights 12kw generator 316 Hrs NEW 4/16

Garmin 4212 Plotter

New 3 sided EZ2CY flybridge enclosure New April 2017

Marquipt davit and Boston Whaler 13 Sport GLS tender on bow

Mercury 40hp 4 stroke outboard 2012 (approximately 50 hours on motor)

4,000 PSI SCUBA compressor with fill station and tank locker

Swim platform, dive ladder and hot/cold dive shower in transom

Sea Recovery reverse osmosis water maker

TracVision satellite T.V. system

Fighting chair (in storage)

Outriggers

Live baitwell

Основная информация

Тип судна: Катер для спортивной рыбалки

Подкатегория: Sedan

Модельный год: 2001

Год постройки: 2001

Страна: United States

Открытая палуба мостика: Да

Размеры

Длина общая: 52' 0" (15.85m)

Ширина: 16' 4" (4.98m)

Мин. осадка: 4' 4" (1.32m)

Макс. осадка: 4' 4" (1.32m)

Длина привального бруса: 52' 0" (15.85m)

Скорость, вместимость и масса

Водоизмещение: 56000 Pounds

Вместимость воды: 150 Gallons

Вместимость сточного бака: 55 Gallons

Объем топливного бака: 860 Gallons

Размещение

Всего кают: 3

Всего коек: 4

Спальные места: 6

Всего ком. состава: 3

Корпус и палуба

Материал корпуса: Fiberglass

Комплектация корпуса: Modified Deep Vee

Цвет корпуса: White

Информация о двигателе

Двигатели: 2

Производитель: Caterpillar

Модель: 3406

Тип двигателя: Inboard

Тип топлива: Diesel

ПОДРОБНОЕ ОПИСАНИЕ

Vessel Walkthrough

The 52 Ocean Super Sport is a very capable sport fisherman as well as a luxurious and modern cruising yacht. The Ultraleather upholstery, flooring, wall coverings and headliners are in excellent condition throughout the vessel. The 3 stateroom 3 head layout offers very comfortable accommodations in the amidships master and forward VIP staterooms, both with ensuite head & shower; as well as the port stateroom with over/under bunks and the day head with shower opposite to starboard.

The spacious salon is bright and open and features comfortable seating aft and to port with the entertainment center opposite to starboard. Up 2 very small steps to starboard is the raised dinette with the very functional galley area opposite to port.

The large cockpit is ideal for cruising, fishing, or entertaining. The fighting chair is in storage and the lazarettes have been equipped with a scuba compressor and tank storage. The cockpit also features a 50 amp shore cord on a Glendinning cable reel, aft controls, freezer, sink, tackle storage, transom door, live baitwell, swim platform & hot & cold shower.

The flybridge with hard top with rod holders has a 3 sided enclosure that is new in Nov 2016 (not pictured). There is plenty of flybridge seating forward and to port with the Stidd helm and mate seats located aft. For safety there is a clear Plexiglas hatch above the flybridge ladder.

On the expansive foredeck is the Marquipt davit and Boston Whaler 13 Sport GLS tender with a 2012 Mercury 40HP 4-stroke outboard motor. For cruising and safety there is a bow rail and pulpit with anchor davit and windlass.

commOcean is loaded with excellent equipment, including the 800 HP Caterpillar 3406 motors for good cruising speed and extended trip capacity. The 52 Ocean Super Sport is tops in its class sea keeping capability, cruising amenities, and live aboard accommodations.

Recent Upgrades

Approximately \$175,000.00 spent in last three years. All receipts available.

\$25,000 designer interior soft goods renewal, upgrade and modernization was completed in 2013.

New top brand refrigerator and ice maker 5/13

New Northern Lights 12kw generator 4/16

New underwater lights – most powerful in the industry 4/16

New non-skid surfacing throughout 4/16

New Garmin 4212 chart plotter 5/14

New High capacity fuel polisher 5/14

New Stateroom T.V.s 7/16

New clothes washer 7/15

New bait freezer compressor 1/14

New air conditioner compressor 2/16

New fresh water and air conditioner pumps 2/16

New power cord 2/16

New LED lights throughout 1/15

Salon

Teak and holly design flooring with area rug

Tinted windows and doors

L-shaped sofa with storage

Push button locking hardware

Air conditioning with reverse cycle heat

Hi-gloss high-low table

Custom window blinds throughout

Full sound/entertainment system with remote

Flat screen TV

Icom VHF

Central vacuum system

Galley

Corian counter top

Convection/microwave oven

Two burner electric cooktop

Upright refrigerator

Ice maker

Trash compactor

Custom window blinds throughout

Water tank gauge

Dinette

High gloss adjustable table top

Custom window blinds throughout

Master Stateroom

Full beam mid-ship with island queen berth and private ensuite head with shower

Separately air conditioned

Entertainment sound system

Flat screen TV

His and hers cedar lined hanging lockers

Clear carpet protector throughout

Central vacuum system

Guest Stateroom

Forward VIP with island queen berth and private ensuite head with shower

Flat screen TV

Cedar lined hanging locker

Separately air conditioned

Clear carpet protector throughout

Central vacuum system

Crew Stateroom

Over/under bunks

Cedar lined hanging locker

Clear carpet protector throughout

Central vacuum system

Companionway

Head with enclosed shower

Over/under washer and dryer

Clear carpet protector throughout

Central vacuum system

Flybridge

New 3 sided enclosure 10/16 (not pictured)

Stidd helm mate chairs aft

Comfortable forward seating

Full sound system

Refrigerator

Spotlight

High intensity spreader lights

Helm Electronics

Raytheon Tridata

Garmin 4212 chart plotter

Furuno NAVnet redundant GPS chart plotter/sonar/fish finder

Simrad Robertson AP20 autopilot

Furuno radar

Icom VHF

Trim Tabs

Engine synchronizer

Trolling valves

Cockpit

Fighting chair

Bait sink

Tackle station with drawers

Bait freezer

Glendinning cable master

Rod holders (4)

Cockpit controls

Transom gate and door

Live baitwell

Freshwater washdown

Raw water washdown

Scuba tank storage and fill locker for six tanks

4,000 PSI SCUBA tank compressor

Hot and cold dive/swim shower

Deck

Foredeck Marquipt 800lb davit

2012 40hp Mercury motor (approximately 50 hours on motor)

Fortress anchor

Lewmar windlass

Fenders and holders

Engine Room

Caterpillar 3406 motors (approximately 1652 hours)

Northern Lights 12kw generator (approximately 316 hours)

Oil exchange system

Sea Recovery water maker

High capacity fuel polisher

Electrical

New Northern lights 12kw generator 316 Hrs 4/16

AC/DC Panels

50 Amp Shore Cord on Glendinning Cable Reel

Brokers Remarks

The 52 Ocean Super Sport is beautiful to look and has a great layout. It is equally good for cruising or fishing. commOcean is in excellent condition and well equipped. She is a "must see" if you are in the market for this type of boat.

Disclaimer

The Company offers the details of this vessel in good faith but cannot guarantee or warrant the accuracy of this information nor warrant the condition of the vessel. A buyer should instruct his agents, or his surveyors, to investigate such details as the buyer desires validated. This vessel is offered subject to prior sale, price change, or withdrawal without notice.

Mechanical Disclaimer Engine and generator hours are as of the date of the original listing and are a representation of what the listing broker is told by the owner and/or actual reading of the engine hour meters. The broker cannot guarantee the true hours. It is the responsibility of the purchaser and/or his agent to verify engine hours, warranties implied or otherwise and major overhauls as well as all other representations noted on the listing.

Исключения

При продаже яхты исключаются личные вещи владельца.

Отказ от ответственности

Компания предоставляет описание судна или яхты добросовестно, но не может гарантировать точность этой информации, а также не ручается за техническое состояние. Покупатель должен проинструктировать своих агентов или оценщиков исследовать представленную информацию более подробно, по собственному желанию. Продажа судна или яхты, изменение цены или снятие с продажи будет происходить без предварительного уведомления.

ФОТОГРАФИИ

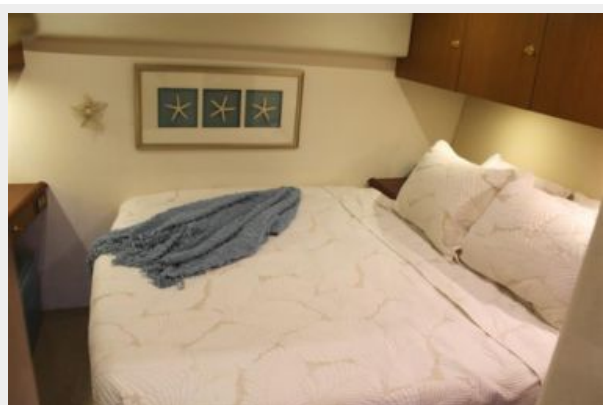
Salon



Galley



Master Stateroom



Flybridge Helm



Salon



Salon



Salon



Dinette



Galley



Galley



Master Stateroom



Master Stateroom



Master Stateroom



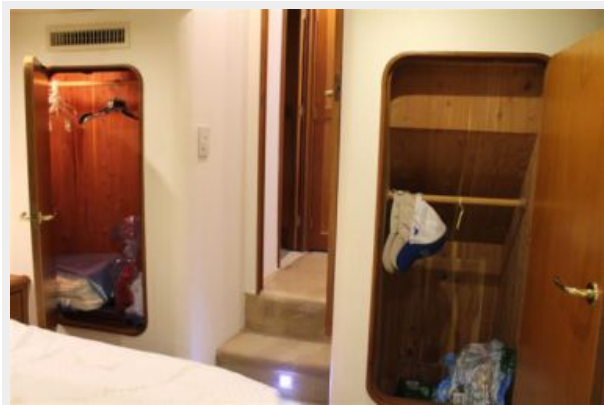
Master Stateroom



Master Stateroom Vanity



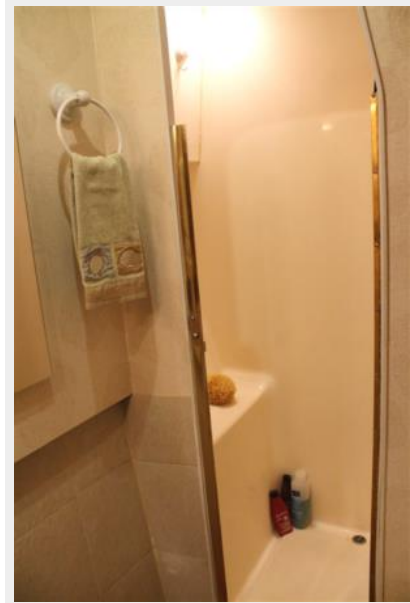
Master Stateroom



Master Stateroom Head & Shower



Master Stateroom Shower



VIP Stateroom



VIP Stateroom



VIP Stateroom



VIP Stateroom



VIP Stateroom



VIP Head & Shower



VIP Vanity



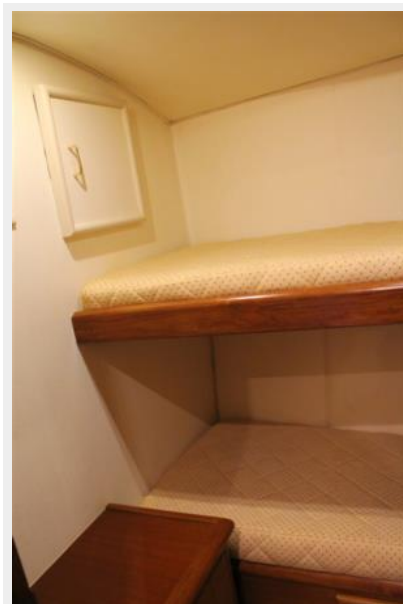
Guest Cabin



Guest Cabin



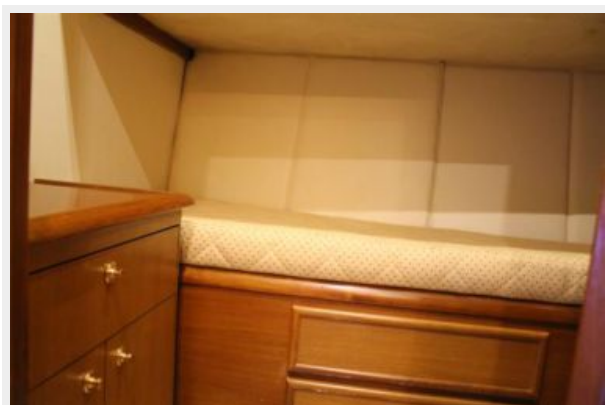
Guest Cabin



Guest Cabin



Guest Cabin



Guest Head



Guest Shower



Guest Vanity



Guest Vanity



Steps to Salon & Galley



Flybridge Forward Seating & new Costa Clear EZ2CY



Flybridge Forward Seating & new Costa Clear EZ2CY



Flybridge Forward Seating & new Costa Clear EZ2CY



Flybridge Forward Seating & new Costa Clear EZ2CY



Flybridge Forward Seating & new Costa Clear EZ2CY



New EZ2CY Enclosure 4.2017



New EZ2CY Enclosure 4.2017



New EZ2CY Enclosure 4.2017



New EZ2CY Enclosure 4.2017



New EZ2CY Enclosure 4.2017



Flybridge Helm



Flybridge Stidd Seats



Flybridge Helm



Flybridge Refrigerator



Flybridge Refrigerator



Flybridge Electronics



CAT Monitors



Furuno NAVnet Monitor



Robertson AP 20 Autopilot



Icom IC-M504 VHF



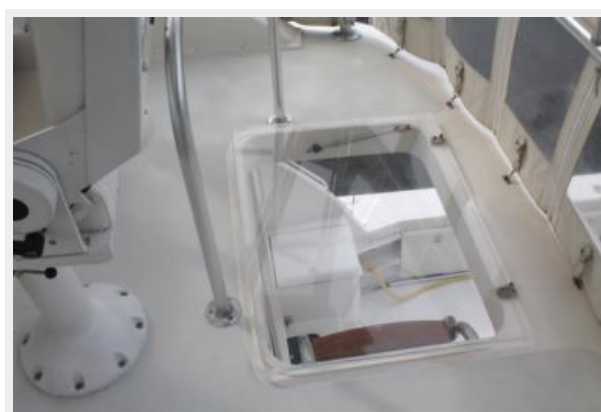
Clarion Stereo



Compass



Plexiglass Flybridge Hatch



Cockpit



Pompanette Fighting Chair



Pompanette Fighting Chair



Swim Platform & Transom Door



Freezer, Sink, Tackle Storage & Engine Room Hatch



Cockpit Controls



Scuba Tank Storage



Scuba Tank Compressor



Dinghy & OB with Covers



Boston Whaler 13 Sport GLS



Foredeck



Mercury 40 HP 4 Stroke 2012



Port Engine



Starboard Engine



1632.2 Starboard Hr Meter 10/27/16



1631.7 Port Hr Meter 10/27/16



Northern Lights Generator & Sounds



Northern Lights Generator



296 Genset Hrs. 10/27/16



Watermaker



AC Compressors



Racor Filters & Oil Change System



Oil Change System & Fire System



Fuel Polishing System



1 Profile.jpg



КОНТАКТЫ

Андрей Шестаков (Andrey Shestakov) – ведущий яхтенный брокер отдела продаж яхт и судов компании Shestakov Yacht Sales Inc. Официальный представитель Shestakov Yacht Sales Inc. для русскоговорящих клиентов в центральном офисе компании в Майами/Форт Лодердейл/Флорида/США.

Контактная информация

Email: andrey@shestakovyachtsales.com

Web: shestakovyachtsales.com

Телефоны

Краснодарский край: **+7(918)465-66-44**

США, Майами, Флорида: **+1(954)274-4435**

Время работы

Понедельник – Суббота: **9:00 - 21:00**
EDT

Воскресенье: **Закрито**

Адрес



Harbour Towne Marina, 850 NE 3rd St,
STE 213, Dania, FL 33004