

SEQUOIA — ARLO NISH



Builder: ARLO NISH

Year Built: 1984

Model: Center Cockpit

Price: PRICE ON APPLICATION

LOA: 69' (21.03mm)

Beam: 17.83

Min Draft: 6' 6" (1.98mm)

Cruise Speed: 8 Knots Kts. (9 MPH)

Max Speed: 9 Knots Kts. (10 MPH)

Our experienced yacht broker, Andrey Shestakov, will help you choose and buy a yacht that best suits your needs **SEQUOIA — ARLO NISH** from our catalogue. Presently, at Shestakov Yacht Sales Inc., we have a wide variety of yachts available on our sale's list. We also work in close contact with all the big yacht manufacturers from all over the world.

If you would like to buy a yacht **SEQUOIA — ARLO NISH** or would like help answering any questions concerning purchasing, selling or chartering a yacht, please call **+1(954)274-4435**

TABLE OF CONTENTS

TABLE OF CONTENTS	2
SPECIFICATIONS	4
Overview	4
Basic Information	4
Dimensions	4
Speed, Capacities and Weight	4
Accommodations	5
Hull and Deck Information	5
Engine Information	5
PHOTOS	6
Passageway to Fwd. Guest Cabins	6
Main Salon	6
Port Guest Cabin	6
Stbd. Guest Cabin	6
Nav Station	7
Galley	7
Galley to Aft	7
Master Stateroom, Aft	7
Engine Space Access	8
Master Stateroom	8
Forepeak	8
Deck Looking Aft	8
Lazarette Hatches	9
Protected Cockpit	9
Profile	9
Aft Deck	9
Fresh Bottom Paint, Fall 2016	10
At Dock	10

Fresh Bottom Paint, Fall 2016	10
In the Slings	10
CONTACTS	11
Contact details	11
Telephones	11
Office hours	11
Address	11

SPECIFICATIONS

Overview

SEQUOIA is a beautiful, built-for-voyaging sailing vessel. Designed and engineered to cruise in style, comfort and safety, she is easily handled by a small crew. Her mainsail has in-boom furling and her headsails are roller furling. Her high-spec steel hull and protected cockpit/pilothouse offer rugged security rarely matched in a sailboat of her genre. Add SEQUOIA's shoal draft, keel-centerboard underbody and upwind sailing performance, and you have what in total is a remarkable vessel. In short, SEQUOIA was conceived with a purpose, has been nicely cared for, and is a unique and special offshore sailboat with a proven record.

Basic Information

Category: Center Cockpit

Sub Category: Pilothouse Cutter

Model Year: 1984

Year Built: 1984

Dimensions

LOA: 69' (21.03mm)

LWL: 53' 2" (16.21mm)

LOD: 65' (19.81mm)

Beam: 17.83

Min Draft: 6' 6" (1.98mm)

Speed, Capacities and Weight

Cruise Speed: 8 Knots Kts. (9 MPH)

Cruise Speed Range: 3000

Max Speed: 9 Knots Kts. (10 MPH)

Water Capacity: 1000 Gallons

Fuel Capacity: 1000 Gal Gallons

Accommodations

Total Cabins: 3

Total Berths: 7

Sleeps: 8

Total Heads: 2

Hull and Deck Information

Hull Material: Steel

Deck Material: Teak

Hull Configuration: Centerboard

Hull Color: Dark Blue

Hull Designer: Thomas Wylie

Engine Information

Engines: 1

Manufacturer: Detroit Diesel

Engine Type: Inboard

Fuel Type: Diesel

PHOTOS

Passageway to Fwd. Guest Cabins

Main Salon



Port Guest Cabin



Stbd. Guest Cabin



Nav Station



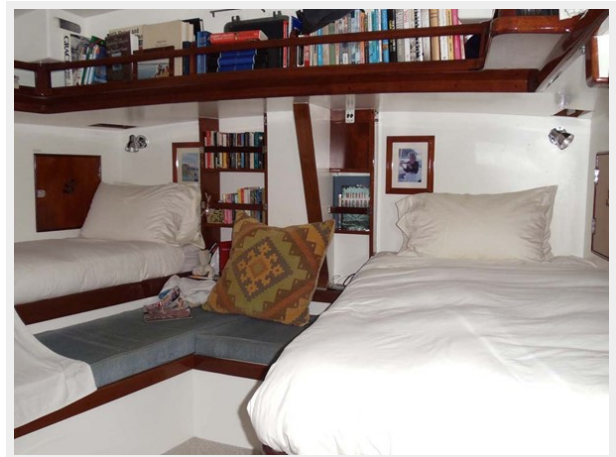
Galley



Galley to Aft



Master Stateroom, Aft



Master Stateroom



Engine Space Access



Forepeak



Deck Looking Aft



Protected Cockpit



Lazarette Hatches



Aft Deck



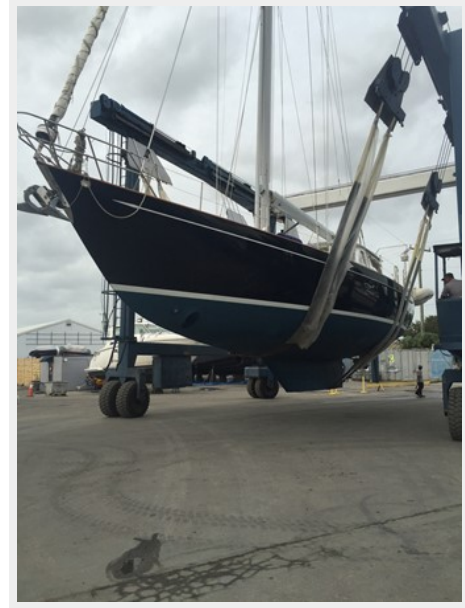
Profile



At Dock



Fresh Bottom Paint, Fall 2016



Fresh Bottom Paint, Fall 2016



In the Slings



CONTACTS

Andrey Shestakov, leading yacht broker of the sales department of Shestakov Yacht Sales Inc. Shestakov Yacht Sales Inc., the official representative of the Miami/Fort Lauderdale FL headquarters.

Contact details

Email: andrey@shestakovyachtsales.com

Web: shestakovyachtsales.com/en/

Telephones

USA: +1(954)274-4435

Office hours

Monday – Saturday: **9:00 - 21:00** EDT

Sunday: **closed**

Address



Harbour Towne Marina, 850 NE 3rd St,
STE 213, Dania, FL 33004