

## BLUE NOMAD — VAN DAM SHIPYARD



**Судостроитель:** VAN DAM SHIPYARD

**Год постройки:** 1982

**Модель:** Крейсерский кеч

**Цена:** **ЦЕНА ЯХТЫ ПО ЗАПРОСУ**

**Местонахождение:** United States

**Длина общая:** 54' 0" (16.46m)

**Ширина:** 15' 0" (4.57m)

**Макс. осадка:** 7' 3" (2.21m)

**Крейс. скорость:** 8 Kts. (9 MPH)

**Макс. скорость:** 9 Kts. (10 MPH)

Купить **Blue Nomad — VAN DAM SHIPYARD** а также выбрать подходящую вам яхту из нашего каталога яхт вам поможет опытный яхтенный брокер Андрей Шестаков. На сегодняшний день компания **Shestakov Yacht Sales Inc.** имеет большое количество яхт в собственном списке продаж, а также тесно сотрудничает со всеми крупными яхтенными производителями по всему миру.

Для того чтобы купить яхту **Blue Nomad — VAN DAM SHIPYARD** а также проконсультироваться по любому вопросу связанному с покупкой, продажей, чартером яхт позвоните по телефону **+7(918)465-66-44**.

# ОГЛАВЛЕНИЕ

ОГЛАВЛЕНИЕ	2
ХАРАКТЕРИСТИКИ	3
Обзор	3
Основная информация	3
Размеры	3
Скорость, вместимость и масса	4
Размещение	4
Корпус и палуба	4
Информация о двигателе	4
ПОДРОБНОЕ ОПИСАНИЕ	5
Accommodations	5
Galley	5
Deck	6
Cockpit	6
Electronics	7
Mechanical	7
Electrical	8
Safety	8
Исключения	8
Отказ от ответственности	8
ФОТОГРАФИИ	10
КОНТАКТЫ	13
Контактная информация	13
Телефоны	13
Время работы	13
Адрес	13

# ХАРАКТЕРИСТИКИ

## Обзор

**Blue Nomad** is an exceptional cruiser from the famous Van Dam shipyard in Holland. Well designed and built with old world quality construction, she features a three stateroom, two head interior layout.

The boat went thru a top to bottom refit in 2011 in preparing for an Antarctic expedition. Although that trip never came to fruition the boat did go to the Galapagos and Cocos Islands.

The refit included:

New steel plating on the bottom including double plating in the bow sections

New electronics

Removal of the teak decks

New sails

New cabin sole

New air conditioning

## Основная информация

**Тип судна:** Крейсерский кеч

**Модельный год:** 1982

**Год постройки:** 1982

**Страна:** United States

## Размеры

**Длина общая:** 54' 0" (16.46m)

**Ширина:** 15' 0" (4.57m)

**Макс. осадка:** 7' 3" (2.21m)

**Трапы:** 63' 3" (19.28m)

## Скорость, вместимость и масса

---

**Крейс. скорость:** 8 Kts. (9 MPH)

**Макс. скорость:** 9 Kts. (10 MPH)

**Макс. скорость поворота:** 2500 Kts.

**Дальность на макс. скорости:** 1200 Kts.

**Водоизмещение:** 500 Pounds

**Вместимость воды:** 500 Gallons

**Вместимость сточного бака:** 20 Gallons

**Объем топливного бака:** 500 Gallons

## Размещение

---

**Всего кают:** 3

**Всего коек:** 4

**Всего ком. состава:** 2

## Корпус и палуба

---

**Материал корпуса:** Steel

**Комплектация корпуса:** Monohull

## Информация о двигателе

---

**Двигатели:** 1

**Производитель:** Volvo Penta

**Модель:** MD70C

**Тип двигателя:** Inboard

**Тип топлива:** Diesel

---

# ПОДРОБНОЕ ОПИСАНИЕ

---

## Accommodations

---

**Walkthrough** 3 Staterooms, plus salon. Leaving the cockpit area and moving forward and down the companionway steps is the main salon with dining area to port, which is furnished with a large rosewood dining table accompanied by C-shaped, cushioned seating (New 2005). Adjacent to the dining area, starboard side, is the navigation table with large chart table with storage inside and large pilot seat. Leaving the main salon area and going forward through the corridor are port and starboard staterooms, furnished with over and under berths. The lower berths have drawers below; there are also hanging lockers. There are two (2) opening port lights in the port and starboard staterooms. Both staterooms have separate en-suite baths with showers and Jabsco manual flush heads. There are opening hatches and opening port lights in both en-suite baths. The chain locker can be accessed through the starboard head forward bulkhead hatch. The galley area is located starboard side and is accessed from the main salon aft, starboard side and stepping down. Further aft is a large working Corian countertop with a drop-in storage compartment and storage cabinetry and drawers. Going further aft down the starboard corridor is the aft stateroom furnished with double berth to the portside. There is also a single berth positioned athwartship, along the base of the transom, and a sitting chair built-in between the portside berth and starboard side cabinetry bulwarks. There is also a desk and stool on the starboard side. There are two (2) port and starboard opening port lights and an opening hatch above. The aft stateroom has an en-suite bath with vanity with sink bowl, shower stall with opening hatch above and a Jabsco manual flush toilet. Absolutely elegant rosewood interior, as would befit a pedigree yacht such as this (2) Cruiseair 16,000 BTU reverse cycle AC units 2011

## Galley

---

Functional galley whether at sea or at anchor.

Features include:

- Force 10 4-burner propane stove and oven, gimbaled with soleniod
- GE microwave oven
- Double integral Corian sinks with filtered drinking water spigots
- Refrigeration: 24v holding plate system. Large boxes, both top loading and front loading.
- Freezer: Large top loading box located under navigator's seat
- 24v Echotech 38GPH watermaker with dedicated stainless steel water tank
- Drinking water to galley plumbed through coils in refrigerator to provide chilled water
- Hot water heater, 20 gal
- Numerous lockers and cabinets for storage
- Coffee maker

---

## Deck

---

**Blue Nomad** is a center cockpit ketch well designed by Robert van Dam.

Features include:

Sparcraft alloy masts and booms stepped on deck Air draft is 63.5 feet

SS standing rigging, Dacron running rigging

North mainsail with Dutchman system (2007)

North mizzen (2007), 130% genoa , staysail Some older sails on board

Canvas covers for main and windlass

Harken roller furlers

Twin downwind poles

Muir Electric windlass with 75lb CQR with 300' of 1/2" chain, Danforth spare anchor

SS pushpit and SS pulpit, mast pulpit

Double lifelines

6 sheet winches, 6 halyard winches 1 davit winch

SS davits

Passareil

Dinghy cradle, holds Carolina skiff

Outboard bracket

SS BBQ

4 solar panels, 360 watts at 24V

Rutland 913 wind generator on mizzen mast

---

## Cockpit

---

The cockpit on **Blue Nomad** is enclosed with a semi doghouse dodger where you are well protected from the elements when running the boat. There are large windows for good vision and solar panels on the top. Other features include:

Teak steering wheel

Deep well protected cockpit

6 halyard winches, 6 sheet winches, 1 davit winch

Electronics are to the left of the companionway, storage to the right

Custom cockpit table

Louvered teak doors

---

## Electronics

---

The electronics were replaced in 2011

Simrad GPS/chartplotter

Simrad AP24 autopilot

Simrad BR 24/Northstar radar

Simrad IS 20 wind, depth, speed

EchoPilot forward looking sonar

Ritchie compass

Vesper Marine AIS

Standard Horizon Matrix AIS VHF

Icom IC-710 SSB

Iridium sat phone

Pactor 3 weatherfax

---

## Mechanical

---

Volvo Penta MD70C 145hp diesel engine (5890 hrs)

Onan Generator , 8MDKDBIB 240/120v (912hrs)

Side Power bow thruster

EchoTech 38 gph water maker

Marine Air Systems air conditioning

70mm stainless steel shaft with 3 blade prop

Racor fuel filter system

Custom holding plate refrigeration

Approved toilet systems with holding tanks

---

## Electrical

---

8 KW Onan generator

Sentry 24V 60A

9 X 12v batteries

Outback 24/120/30 amp inverter

Maytag washer/ Maytag dryer , 2 separate units

Custom electric pane

---

## Safety

---

8 man Avon liferaft, needs inspection

Navigation lights, anchor light, deck lights

2 horseshoe liferings, Lifesling, MOB pole

Numerous life vests

FE 241 engine room fire extinguisher, 3 X portable extinguishers

Carolina skiff with 5 hp Mariner outboard (2011)

---

## Исключения

---

При продаже яхты исключаются личные вещи владельца.

---

## Отказ от ответственности

---

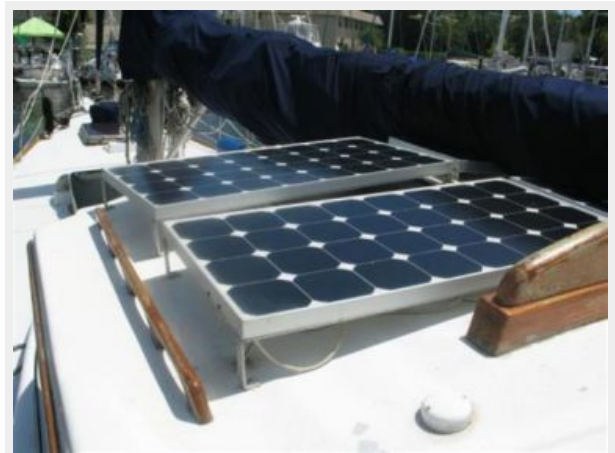
Компания предоставляет описание судна или яхты добросовестно, но не может



гарантировать точность этой информации, а также не ручается за техническое состояние. Покупатель должен проинструктировать своих агентов или оценщиков исследовать представленную информацию более подробно, по собственному желанию. Продажа судна или яхты, изменение цены или снятие с продажи будет происходить без предварительного уведомления.

# ФОТОГРАФИИ









# КОНТАКТЫ

---

Андрей Шестаков (Andrey Shestakov) – ведущий яхтенный брокер отдела продаж яхт и судов компании Shestakov Yacht Sales Inc. Официальный представитель Shestakov Yacht Sales Inc. для русскоговорящих клиентов в центральном офисе компании в Майами/Форт Лодердейл/Флорида/США.

## Контактная информация

---

Email: [andrey@shestakovyachtsales.com](mailto:andrey@shestakovyachtsales.com)

Web: [shestakovyachtsales.com](http://shestakovyachtsales.com)

## Телефоны

---

Краснодарский край: **+7(918)465-66-44**

США, Майами, Флорида: **+1(954)274-4435**

## Время работы

---

Понедельник – Суббота: **9:00 - 21:00**  
EDT

Воскресенье: **Закрето**

## Адрес

---



Harbour Towne Marina, 850 NE 3rd St,  
STE 213, Dania, FL 33004