

## PRECIOUS LADY — HATTERAS



**Судостроитель:** HATTERAS

**Год постройки:** 2001

**Модель:** Моторная яхта

**Цена:** **ЦЕНА ЯХТЫ ПО ЗАПРОСУ**

**Местонахождение:** United States

**Длина общая:** 75' 4" (22.96m)

**Ширина:** 18' 2" (5.54m)

**Мин. осадка:** 6' 1" (1.85m)

**Макс. осадка:** 6' 3" (1.91m)

**Крейс. скорость:** 23 Kts. (26 MPH)

**Макс. скорость:** 27 Kts. (31 MPH)

Купить **PRECIOUS LADY — HATTERAS** а также выбрать подходящую вам яхту из нашего каталога яхт вам поможет опытный яхтенный брокер Андрей Шестаков. На сегодняшний день компания **Shestakov Yacht Sales Inc.** имеет большое количество яхт в собственном списке продаж, а также тесно сотрудничает со всеми крупными яхтенными производителями по всему миру.

Для того чтобы купить яхту **PRECIOUS LADY — HATTERAS** а также проконсультироваться по любому вопросу связанному с покупкой, продажей, чартером яхт позвоните по телефону **+7(918)465-66-44**.

# ОГЛАВЛЕНИЕ

ОГЛАВЛЕНИЕ	2
ХАРАКТЕРИСТИКИ	8
Основная информация	8
Размеры	8
Скорость, вместимость и масса	8
Размещение	8
Корпус и палуба	8
Информация о двигателе	9
ПОДРОБНОЕ ОПИСАНИЕ	10
Walkthrough	10
Salon	11
Galley	11
Office Area	12
Lower Helm/Pilothouse	12
Navigation Equipment	12
Forward Companionway	13
VIP/Day Head	13
Forward VIP Cabin	13
Captain/Fourth Stateroom	14
Captain/Fourth Cabin Head	14
VIP Cabin	14
VIP Head	15
Master Cabin	15
His and Her Heads	16
Foredeck/Side Decks	16
Aft Deck	17
Lazarette	17
Flybridge	17

Helm Equipment	18
Boat Deck	18
Engine Room	19
Generator Room	20
Electrical System	20
Remarks	20
Exclusions	21
Disclaimer	21
Исключения	21
Отказ от ответственности	21
ФОТОГРАФИИ	22
SALON LOOKING FORWARD	22
PORTSIDE CONVERTIBLE SOFA	22
STARBOARD SIDE SALON	22
DINING TABLE	22
SALON LOOKING AFT	22
GALLEY LOOKING FORWARD	23
GALLEY	23
GALLEY	23
GALLEY LOOKING TO PORT	23
GALLEY LOOKING AFT	23
GALLEY PANTRY	23
STARBOARD SIDE OFFICE AREA	24
PILOTHOUSE	24
HELM STATION	24
DOUBLE HELM SEAT	24
PILOTHOUSE WINE COOLER	24
STAIRS TO FLYBRIDGE	24
HELM TO PORT	25

HELM PORTSIDE	25
HELM CENTER	25
HELM STARBOARD	25
HELM ABOVE	25
FORWARD ACCOMMODATION STAIRS	25
DAY/VIP HEAD	26
VIP	26
VIP TO STARBOARD	26
VIP TO PORT	26
VIP STORAGE	26
CREW/FOURTH CABIN	26
CREW/FOURTH HEAD VANITY	27
CREW/FOURTH CABIN SHOWER	27
COMPANIONWAY LAUNDRY	27
MIDSHIP VIP LOOKING FORWARD	27
MIDSHIP VIP TO PORT	27
MIDSHIP VIP TO STARBOARD	27
MIDSHIP VIP STORAGE	28
MIDSHIP VIP HEAD VANITY	28
MIDSHIP VIP JACUZZI/SHOWER	28
SALON STAIRS TO MASTER	28
COMPANIONWAY TO MASTER	28
MASTER LOOKING AFT	28
MASTER LOOKING STARBOARD	29
MASTER LOOKING PORT	29
MASTER LOOKING FORWARD	29
MASTER TV	29
PORT MASTER HEAD	29
HONEY ONYX SHOWER	29

HONEY ONYX SHOWER	30
NEW FIXTURES	30
SHOWER LOOKING TO PORT	30
SHOWER SEAT	30
STARBOARD MASTER HEAD	30
FOREDECK	30
FOREDECK	31
BOARDING AREA	31
GREAT SHINE!	31
ARCH EQUIPMENT	31
AFT DECK TABLE	31
AFT DECK LOOKING PORT	31
AFT DECK LOOKING STARBOARD	32
CUSTOM AFT DECK BENCH SEAT	32
AFT DECK STARBOARD	32
SPORT DECK STEPS	32
SPORT DECK	32
SPORT DECK	32
STERN SHOT	33
LAZARETTE LOOKING TO PORT	33
LAZARETTE LOOKING TO STARBOARD w/DIVE COMPRESSOR	33
FLYBRIDGE LOOKING AFT	33
FLYBRIDGE LOOKING FORWARD	33
FLYBRIDGE STARBOARD SEAT	33
FLYBRIDGE PORT SEAT	34
FLYBRIDGE BAR	34
FLYBRIDGE STARBOARD FORWARD	34
FLYBRIDGE STARBOARD BAR	34
FLYBRIDGE PORT BAR STORAGE	34

BLUE ARCH AND HT LIGHTS	34
CUSTOM	35
COVERS FOR ALL	35
COVERS FOR ALL	35
FLYBRIDGE HELM	35
FLYBRIDGE HELM	35
HELM TO PORT	35
HELM CENTER	36
HELM TO STARBOARD	36
BOAT DECK GAS GRILL	36
WAVE RUNNER	36
2010 AQUASCAN TENDER	36
STARBOARD ENGINE	36
PORT ENGINE	37
WATERMAKER	37
OUTBOARD PORT ENGINE	37
CUSTOM ENGINE ROOM SEALING	37
SUPERIOR CONDITION	37
CAT GAUGES	37
GENERATOR ROOM AFT GEN	38
GENERATOR ROOM AC UNITS	38
GENERATOR ROOM FORWARD GEN	38
UNDERWATER LIGHTS	38
ALTERNATE PROFILE	38
Feb 2019 Yard Visit	38
Feb 2019 Yard Visit	39
Feb 2019 Yard Visit	39
Feb 2019 Yard Visit	39
Feb 2019 Yard Visit	39

---

КОНТАКТЫ	40
-----	-----
Контактная информация	40
-----	-----
Телефоны	40
-----	-----
Время работы	40
-----	-----
Адрес	40
-----	-----

# ХАРАКТЕРИСТИКИ

## Основная информация

Тип судна: Моторная яхта

Модельный год: 2002

Год постройки: 2001

Страна: United States

Верх: Hardtop

## Размеры

Длина общая: 75' 4" (22.96m)

Ширина: 18' 2" (5.54m)

Мин. осадка: 6' 1" (1.85m)

Макс. осадка: 6' 3" (1.91m)

## Скорость, вместимость и масса

Крейс. скорость: 23 Kts. (26 MPH)

Макс. скорость: 27 Kts. (31 MPH)

Чистый вес: 64 Pounds

Вместимость воды: 345 Gallons

Вместимость сточного бака: 215 Gallons Объем топливного бака: 1561 Gallons

## Размещение

Всего кают: 4

Спальные места: 8

Всего ком. состава: 5

## Корпус и палуба

Материал корпуса: Fiberglass

Материал палубы: Teak

Комплектация корпуса: Modified V-Hull

Дизайнер корпуса: Hatteras

Дизайнер экстерьера: Hatteras

Дизайнер интерьера: Hatteras



## Информация о двигателе

---

**Двигатели:** 2

**Производитель:** Caterpillar

**Модель:** 3412E

**Тип двигателя:** Inboard

**Тип топлива:** Diesel

---

# ПОДРОБНОЕ ОПИСАНИЕ

---

## Walkthrough

---

Boarding PRECIOUS LADY is either via the port or starboard Pilothouse doors from a fixed dock or the Sport Deck from a floating dock.

Starting aft the Sport Deck steps lead up to a spacious covered Aft Deck with both fixed and loose seating around a fixed table. A bar with refrigeration and icemaker is to starboard.

The three panel aft glass bulkhead opens from the center revealing a full beam Salon with a couch to port and two occasional chairs flanking a new popup TV cabinet to starboard.

Further forward to port is a six place dining table. Next forward to the open Galley with ample storage and full size appliances. To starboard are the private steps to the Master Cabin followed by a unique and useful open Office Area in place of the standard Dinette Area.

Further forward behind a hinged door is the Pilothouse with steps for easy access to the Flybridge.

Steps to starboard lead to the three forward Cabins. At the bottom of the stairs is the Day Head with is dual access doors that also serves as the forward VIP Head. All the way forward is the VIP with a centerline queen size berth and ample storage.

At the base of the stairs to port is an over/under twin berth Cabin with a private head and shower that normally serves as a Crew Cabin.

Aft from the Main Companionway down three more stairs is the Laundry Area followed by amidship VIP Cabin with a queen berth, ample storage and a private head with a Jacuzzi tub/shower.

A door from the midship VIP leads to the Engine Room.

Down the Salon stairs is the Master Cabin with an additional Engine Room access forward.

The Master Cabin has a king size centerline berth, walk in closets, ample drawers and His and Her Heads aft. During the Fall of 2016 the centerline Jacuzzi tub was removed and replaced with a dual access walk in Onyx paneled shower that has never been used!

The Flybridge deck accessed from the Pilothouse has a centerline helm, a walk behind bar to port with three stools facing forward, refrigeration to starboard and twin L shaped seating groups with new high gloss tables to port and starboard.

Aft is the Boat Deck with two large storage lockers, a Wave Runner and a Novurania RIB tender.

---

## Salon

---

Entered via a centerline sliding door, the Salon is light and airy due to the large side and aft windows.

A carpet runner protects the newer carpet throughout.

To port is a brand new three cushion sleeper sofa with loose pillows, a small end table with a cabinet and pull out shelf and a hidden USB and 110V outlet. A glass and brass coffee table is lying in front.

To starboard are two oversized upholstered club chairs with a custom maple and Azul Macauba Quartzite top TV cabinet. Inside is a new 55' Samsung 3D LED TV that pops up on a motorized lift or can be watched in the down position by opening the twin doors.

Next forward are the stairs to the Master Cabin and one of the Engine Room entrances.

To port is a new 52" glass round dining table with wood base and five dining chairs. Four dedicated halogen lights on a dimmer are above the table.

Forward at the aft end of the Galley countertop are six cabinet doors, perfect for storing dishes, galley ware and dining table accessories (contents included in sale).

The Salon has six large side windows and three full height panels aft. All are covered by (new 11/16) sheer blinds by Poseidon Marine Blinds of Ft. Lauderdale.

The air conditioning is delivered in port and starboard valances behind maple crown moldings that run the full length of the Salon. Accent rope lights are behind. Roman demi shades cover the tops of the windows. Aft are twin sconce lights either side of the side lights flanking the entry door.

Above are fourteen halogen mini spots on a dimmer also controllable from the Leviton one button controller for "scene lighting effects".

The AC is controlled by a digital SMX controller. Five channel stereo speakers are driven by a Marantz AV sound receiver, a Marantz Super Audio CD Blue Ray player, iScan DVD DVDO hard drive, an Apple TV player, all in a cabinet by the Master Cabin stairs.

An additional cabinet has room for five (owner provided) Sat TV boxes and houses the Ibox camera switcher. A multifunction Harmony remote controls all A/V systems.

---

## Galley

---

Galley Equipment includes:

Azul Macauba Quartzite countertops Franke under mount stainless steel double sink Franke

single lever faucet w/removable sprayer Instahot hot/cold water dispenser w/filter Custom floor to ceiling 2 piece pullout pantry for dry goods Dual pullout waste containers trash/recyclables Expanded Galley countertop, over original Kitchenaid refrigerator/freezer w/maple insert on door & external ice/water dispenser Kitchenaid dishwasher Insinkerator disposal GE Profile 30" 4 burner ceran top cooktop GE Profile self cleaning built in oven GE Spacemaker XL microwave w/light & fan above Water tank gauge in cabinet Custom maple crown molding (2) Overhead audio speakers Under cabinet recessed lighting (4) (10) Overhead halogen mini spots (14) Maple cabinet doors (6) Maple drawers Solid 3/8" teak & maple sole Large side fixed window w/new Poseidon blind Fully supplied w/dishes, pots & pans, silverware as shown Cuisineart coffeemaker (4) Open shelves for storage

## Office Area

Conveniently located adjacent to the Galley where a small dinette is usually located is a great Office Space. It shares the teak maple sole of the Galley.

Facing outboard is a desk area with a pull out drawer for a keyboard, three storage drawers and a file drawer. There are seven dedicated lights above, a large window with new shades, additional storage and a liberal use of the beautiful Azul Macuba Quartzite countertop.

A desk chair to match those in the Dining Area is at the Desk.

## Lower Helm/Pilothouse

3/8" Solid teak & maple sole Centerline helm Maple 2 person leather upholstered helm seat w/one large drawer, pullout footrest & (4) storage cabinets Sub Zero 2 Zone glass front wine cooler outboard of helm seat Storage drawer & table lamp above wine cooler Port & starboard sliding Wheelhouse doors (2) Stereo speakers (9) Overhead halogen mini spots (2) Overhead red night navigation lights Manual Halon pulls for Engine & Generator Room Brass clock & barometer 9 Carpeted steps to Flybridge w/step lights Slim storage cabinet outboard of steps Large storage cabinet under Flybridge steps SMX AC controls Hinged door between Pilothouse & Galley Storage cabinet outboard of helm Smoke/fire alarm Large storage cabinet under Flybridge steps

## Navigation Equipment

Garmin 15" 8215 GPS Map touch screen MFD Furuno Navnet 10.1" plotter/GPS SEA 857 loud hailer/intercom w/remote mic Furuno RD33 data display/GPS ACR RCL-100 Point pad spotlight camera Sturdy separate clutch & throttle controls (2) CAT LCD engine monitors VDO rudder angle indicator (2) VDO analog voltmeters 14" Vartech color monitor Furuno 1200 FR-2115BB 120 mile radar control head w/ARPA Furuno Navtex NX-300 receiver ABT TRAC hydraulic thruster w/joystick control Robertson AP 20 autopilot SEA 157 VHF w/remote mic Engine station

active control (7) Lighted bilge pump switches Battery parallel switch Blower switches Slow vessel mode switch Trim tab controls Nav light switches 6" Ritchie Powerdamp compass in binnacle B & G HS 2000 depth sounder B & G wind direction indicator B & G wind speed indicator Naiad Multisea II digital stabilizer controls (3) Windshield wiper/washer controls (4) Analog fuel tank gauges Sturdy emergency backup controls in cabinet below Elbex video camera system Garmin Blue Charters G2 vision card reader Garmin GXM51 Sat weather receiver

---

## Forward Companionway

---

Down five carpeted steps with step lights from the starboard side of the Wheelhouse is the Forward Accommodation Companionway.

At the bottom of the fourth step is a storage locker, the access to the Generator Room, access to the Day Head and the VIP Cabin forward as well as the Fourth Cabin to port, often used for Crew.

Three steps down and aft is the Laundry Center behind an arched maple door. It contains a Whirlpool Thin Twin stacked washer dryer.

Aft is the entrance to the centerline VIP Cabin.

---

## VIP/Day Head

---

At the first landing from the Forward Accommodation stairs is a door leading to the Day Head. Another door in the Head leads into the VIP Cabin allowing this Head to serve a dual purpose.

The two door maple vanity has a granite countertop and a Kohler under mount sink above. A mirrored medicine cabinet and lighted makeup mirror are above.

The toilet is a Head Hunter Royal Flush model. Two storage cabinets behind the head offer additional storage.

The stall shower has a clear glass bifold door, a handheld or wall mountable fixture and a light.

Also in the Head is a mirrored overhead, overhead deck hatch with a sliding screen and shade, exhaust fan and four halogen mini spots.

The sole is teak and maple.

---

## Forward VIP Cabin

---

The Forward VIP Cabin is three steps down from the Head, via an arched maple door. There is a

centerline tapered queen berth with an upholstered headboard and painting above to hide the anchor locker door. Below the berth is hinged access to a cedar lined storage area with accent rope lighting at the edge of the berth.

To both port and starboard are built in shelves to serve as nightstands. Both terminate into two drawer cabinets.

Above the padded hull liner are six cabinet doors port and starboard with AC delivery above.

On the aft bulkhead is a Sharp 32" LCD TV/DVD combo, a cedar lined auto lit hanging locker and two storage cabinets.

A large hatch in the sole offers storage below. Above is a large Bomar deck hatch for ventilation and escape covered by an Ocean Air sliding screen and shade. Above are eleven halogen mini spots, two stereo speakers and a smoke detector.

---

## Captain/Fourth Stateroom

---

To port is a small upper/lower Cabin often used for Crew. There are twin over/under berths running athwartships on the aft bulkhead.

The upper berth hinges up as a Pullman offering a single cabin layout if desired. At the foot of the lower berth is a Samsung 21" LCD TV, hinged to access storage behind. There are two storage drawers below the lower berth. Each berth has a reading light. Outboard and forward is a cedar lined auto lit hanging locker with shelves within.

Also in this cabin are two stereo speakers, a carpeted sole, rope accent lighting and three halogen mini spots overhead.

---

## Captain/Fourth Cabin Head

---

Accessed via a sliding maple door is the private Head for this cabin.

The two door maple vanity has a granite countertop and a Kohler under mount sink above. A mirrored medicine cabinet and lighted makeup mirror are above.

The toilet is a Head Hunter Royal Flush model. Two storage cabinets behind the head offer additional storage.

The stall shower has a clear glass bifold door, a handheld or wall mountable fixture and a light.

---

## VIP Cabin

---

Entered from the forward end the queen size VIP is off the forward bulkhead. There is an

upholstered headboard with two sconce lights and gooseneck LED reading lights. The aft end of the berth is hinged to access cedar lined storage. Each side of the berth has a small two drawer nightstand. AC delivery is over the berth on the forward bulkhead. Outboard to port are four maple drawers with two storage compartments below.

Above on a maple shelf is a Sharp 26" LED TV/DVD combo. Above is an opening screened porthole behind pleated shades and full Roman shades.

At the foot of the berth on both port and starboard sides is a cedar lined auto lit hanging locker. On the aft bulkhead is the forward entrance to the Engine Room, a convenient option.

To starboard is the access to the private VIP Head. Also in this cabin are stereo speakers, a full size dressing mirror, eight halogen mini spots and a hidden AC SMX controller.

---

## VIP Head

---

Entered via an arched maple door is the private VIP Head.

There is a vanity with two cabinet drawers below and a granite countertop above with an under mount Kohler sink.

Above is a single door mirrored medicine cabinet, two side lights, and opening porthole is a mirrored bulkhead and a Head Hunger full size toilet.

The tub shower has a sliding clear glass door, a Jacuzzi Whirlpool tub, a handheld and wall mounted fixture as well as two lights and an exhaust fan.

The Head has a mirrored bulkhead with three halogen mini spots and a teak and holly sole.

---

## Master Cabin

---

Accessed via the starboard side of the Salon and eight steps below is the Master Cabin aft and the aft Engine Room forward entrance. Each step has a carpet runner and a step light.

Entered via an arched maple door the Master Cabin is surprisingly large and contains a huge amount of storage.

The king size bed facing forward is on centerline. Four drawers under the bed offer ample storage. The headboard is upholstered in Ultra Suede and has his and her sconce lights with attached gooseneck LED reading lights. AC delivery is designed to flow over the bed and not in your face. Either side of the berth are arched maple doors leading to His and Her Heads.

To both port and starboard are six large maple drawers and three access panels below. Above is a maple shelf with a table lamp, Duette shades and full Roman shades with two large opening screened portholes behind.

Forward to both port and starboard is a walk in cedar lined auto lit hanging locker with the port side having a digital safe and a shoe locker. The inside of each arched closet door has a full size dressing mirror.

On the forward bulkhead is a two door cabinet that houses a new 32" Samsung LCD TV on a pull out shelf. Both doors slide into the wall as needed. A multifunction Harmony remote controls all.

Below is a double door cabinet with four maple drawers below.

Also in this cabin is a hidden SMX AC controller, a Bey Berk International brass clock and a barometer, a bench at the end of the berth, two stereo speakers and a carpeted sole. Overhead are sixteen halogen mini spots and two stereo speakers.

## His and Her Heads

---

A fantastic feature of PRECIOUS LADY is the new shared shower between the His and Her Heads. In September/November of 2016 the two person, hard to get into, Jacuzzi was removed. In its place a large Honey Onyx shower was constructed. The shower has a mix of slab and octagonal tile Honey Onyx, a large seat, a new shower fixture with body sprays, handheld sprayer and shower head. A unique full beam stainless steel drain allows for draining to either side of the shower. Two full size doors and side lights make this a vast improvement over a 100 gallon tub that was difficult to supply with hot water. Overhead are two halogen lights.

While the shower is certainly the centerpiece to both port and starboard are matching His and Her Heads with the following features:

Maple vanity with two cabinets and a drawer below a Honey Onyx countertop with a Kohler under mount sink Two sliding door mirrored medicine cabinet with side lights Opening screened porthole with privacy cover Mirrored overhead with five halogen mini spot Exhaust fan Teak & maple vinyl covered sole Head Hunter full size toilet Magnifying lit makeup/shaving mirror Towel bars Wallpaper

## Foredeck/Side Decks

---

Fiberglass nonskid deck Hatteras fiberglass bow pulpit Stainless steel anchor chute w/bow roller Maxwell 3500 electric windlass w/wildcat & capstan Up & down foot switches for windlass Second rope/deck pipe for spare anchor Stainless steel plow anchor w/300' galvanized chain Bow seating w/sun lounge, newer P & R canvas cushions & cover Portside freshwater w/Quick Disconnect fitting Black Textulene windshield privacy cover (3) Windshield wipers & washers (4) Portside diesel fill fittings Portside water fill fittings Waste pump out fitting (2) Overhead LED side deck courtesy lights ACR Dual beam remote control searchlight Dual trumpet chrome air horns Mounted 8 step Marquipt Tide Ride ladder, starboard side Mounted 4 step Marquipt vertical ladder, portside Stainless steel handrails w/vinyl coated life lines (2) Freshwater wash down Quick Disconnect fittings Bow pennant staff (4) Stainless steel fender baskets Bomar deck hatch



(2) Small Bomar deck hatches in trunk cabin Triple spring line cleats House side stainless steel handrails (3) Blue LED lights over side deck windows Frameless windows Custom spray rails added to forward area of hull Port & starboard fender track under rub rail for fender hanging

## Aft Deck

Teak over fiberglass Aft Deck recently sanded & coated w/Sikkens Cetol natural sealer Bluewater high gloss teak table w/cover & (2) stainless steel bases & cover (8) Folding teak chairs w/removable cushions Table relocated aft towards new built in seating area Custom stainless steel \$6500.00 Aft Deck rail seating, new 11/16, allows for much more deck space Aft Deck Sunbrella seat cushions & cover, new 11/16 Aft Deck aft facing/articulating camera Full aft bulkhead glass windows w/center sliding door to Salon Overhead lighting, blue LED Starboard side built in wet bar w/U Line refrigerator/icemaker, storage cabinet & Azul Macauba Blue Quartzite top & weather cover (5) Teak tread stairs to swim platform on starboard side Integral swim platform "Sport Deck" w/fiberglass nonskid decking Freshwater wash down at platform Hot & cold shower at platform (2) Popup cleats on platform Watertight Lazarette door from platform (7) Blue LED step lights at stairs Modified stainless steel flag socket, varnished staff & ensign w/cover (2) Aqua Luma underwater lights (new 2014) White Textulene weather/sun cover on aft rail (2) Stereo speakers on Aft Deck (2) Stereo speakers on Sport Deck (4) Flush mount rod holders Stainless steel rails on Sport Deck, center one removable Hubble 30 amp outlet to supply 110V to tender

## Lazarette

(4) DC lights 5 Rack dive tank storage Hot & cold pressure water manifold Spare Danforth anchor Bauer Junior II dive compressor 8 Place rod rack Well troll expansion tank for water system Duplex GFCI outlet (2) Low level light transformers P & R Canvas support poles & canvas dedicated aft shade

## Flybridge

The Flybridge of PRECIOUS LADY is set up for serious entertaining and as such it becomes a wonderful center of both daytime and evening activity.

The access is up a lockable sliding door from the Pilothouse to the starboard side. On centerline is the complete Helm Station with three Murray Brothers helm seats. That's where the standard Hatteras features end!

Immediately aft of the entry to starboard is a custom cabinet with an Azul Macauba Quartzite countertop. Below within two doors is a Magic Chef drink refrigerator and a standalone Perlick stainless steel "clear" icemaker. Opposite to port is a custom (not Hatteras key bar) Azul Macauba Quartzite J shaped walk behind bar with three swivel barstools facing forward.

Outboard are two cabinets, one for storage and one with four drawers inside all precut for drinking and wine glasses. Above a hammered stainless steel sink with a bar tap completes the service bar.

Next aft on both the port and starboard sides are two L shaped settees with newer Sunbrella cushions, storage below and full weather covers.

In front of each settee is a new high gloss “Bluewater” teak table, with covers, on a polished stainless steel base.

Equipment in this area includes:

Nonskid fiberglass sole 3 Side P & R Canvas clear 9 panel enclosure which snaps to top, new 2015 Aft side 3 piece enclosure w/rollup door, new 2016 Radar arch w/(2) blue LED down lights Pipewelders pipe top w/(4) blue LED lights on a dimmer (12) White LED lights under seating group Walk behind egress to Boat Deck (2) Duplex GFCI outlets (6) White LED lights forward in Helm Area (4) JL Audio 7” marine speakers (2) JL Audio subwoofers Wraparound dark tinted Plexi windshield

## Helm Equipment

---

(3) Murray Brothers swivel helm seats w/footrests, removable cushions & cover SEA 857 hailer intercom ICOM M506 VHF w/DSC Garmin 8212 touch screen GPS/plotter (new 2015) Furuno RD33 GPS/data display Sturdy separate electronic clutch & throttle controls Hynautic stainless steel helm steering (2) CAT LCD digital engine monitors Simrad AP20 autopilot w/handheld remote ABT hydraulic bow thruster control Furuno Nav Net plotter/depth/radar Station active controls Push button start controls (2) VDO voltmeters VDO rudder angle indicator B & G wind direction indicator B & G wind speed indicator (7) Lighted bilge pump switches Trim tab controls Windlass controls ACR RCL-100 Point Pad spotlight control Naiad remote stabilizer control 6” Ritchie Power Damp compass in binnacle Overhead red navigation light on dimmer (3) Drink holders EPIRB (needs updating) KVH Tracvision dome KVH Fleet 55 dome

Area under Helm is clear, neat and orderly. It was most recently updated by High Seas Marine in 2015 with the additional of some new navigation equipment.

Garmin card reader, A/B radar/camera switch for Nav Net, Flybridge deck light control, etc. are located in this area.

## Boat Deck

---

Walking between the two L shaped settees is the Boat Deck area. There are custom matching fiberglass cabinets port and starboard. To starboard under a hinged top is a Fire Magic gas grill

with a removable stainless steel hood stored below. Two 20 lb. LP gas bottles are stored here as well.

To port the matching top hinged cabinet contains general storage including the recently recertified Swintek ten person life raft, life ring with throw line, etc.

Aft is a 2013 Yamaha FX cruiser Wave Runner with a 2016 rebuilt engine sitting on adjustable chocks. Next aft is a 2010 is a 15' Aquascan with: Aft Bench Seating 70 hp Suzuki 4-stroke Outboard Nav Lights Lifting Bridal Wheel Steering Compass Battery Switch Storage Under Helm Seat Sunbrella Full Cover Suzuki Gauge Package Fusion Stereo and Speakers Five (5) Step Pads Drink Holders Dolphin Tabs on Outboard Standard Horizon VHF Radio

Set up to launch both is a Marquipt 1500 power rotation davit also recently rebuilt 10/16. The deck area is nonskid fiberglass. Also in this area are four rod storage holders.

## Engine Room

T/CAT 3412E 1400 HP diesels w/3190 hours ZF 1965 transmissions w/4 to 1 ratio Naiad model 254 stabilizers 7.5 sq. ft. fins ABT bow thruster, hydraulic, 12" tube, twin 5 blade props Bennett triple ram trim tabs 3 1/2" stainless steel prop shafts Dripless shaft seals "Sturdy" CAT electronic engine controls "Sturdy" electronic synchronizer Racor dual 1000 filters engine fuel filters w/vacuum gauges (2) Electric fuel priming pumps Six blade Nibral 48" x 73" main props AC fluorescent lighting (3) DC incandescent lighting (4) Fore & aft Engine Room doors Additional sound insulation in Engine Room CAT direct reading Engine Room gauges CAT start/stop key switches in Engine Room CAT local/remote switches in Engine Room 65 lb. Halon 1301 cylinders in current certification Ultra Violet water purification system Dockside water pressure regulator Hot & cold water manifold (2) 230 volt Head Hunter Mach 5 house water pumps Cable/antenna TV A/B switch Oil change pump w/dock length quick release hose fittings (2) Leesen lift/fuel pumps Fuel valve manifold for fuel management (2) Naiad stabilizer actuators in covered boxes Sea Recovery 1200 GPD watermaker w/auto flush Compressed air outlet in Engine Room w/pressure gauges Steering system cooling pump (2) 110V Raw water AC pumps to service (7) AC units Holding tank macerator pump w/vacuum switch Power steering pump off port transmission Stabilizer pump off starboard transmission Stainless steel safety rails around engines Custom overhead storage racks above engines Head Hunter Mako diaphragm waste pump (2) Racor 500 fuel filters for generators

Fuel tanks as follows: Bow 180 gallons Forward 210 gallons Forward mid 525 gallons Mid 646 gallons Total 1561 gallons

(2) AO Smith water heaters Engine coolant expansion tanks Airsep crankcase ventilation system, new 2015 (2) Ventilation fans in Engine Room Filters on air box vents External DC fans on air box vents (2) Stainless steel grab rails outboard of engines Custom metal shelf for house & oil pump Reverse osmosis of South Florida water system filter Customized sewage disposal system (2) Engine Room cameras

---

## Generator Room

---

(2) 12 KW Charles Iso Boost transformers Expansion tank for each generator Folding two step entry ladder DC overhead lights auto on/off (2) Generator mufflers (2) Forward hot & cold water distribution manifold Wash down spigot & hose (2) Racor 500 fuel filters for generator Hydraulic PTO off aft generator for bow thruster Auto Fire suppression bottle for Generator Room A/O Smith 19 gallon water heater #2 Household air compressor (6) Cruiseair air conditioning compressors as follows: Midship Stateroom AC 10,000 BTU Galley AC 7000 BTU Forward Cabin AC 7000 BTU Aft Stateroom 24,000 BTU Salon 30,000 BTU Pilothouse 16,000 BTU Crew Cabin 7000 BTU

---

## Electrical System

---

12V/24/DC electrical system 120V/240 Volt AC electrical system Onan 21.5 KW generator w/sound shield in generator room 4005 hrs. Onan 21.5 KW generator w/sound shield in generator room 3575 hrs. Newmar 24-12, 50 amp step down transformer (2) Charles ISO Boost transformers w/selectors at main panel AC lighting transformers (4) 8D Batteries (4) Vapor proof battery shutoff switches DC Ship's service distribution panels (3) AC Ship's service distribution panels (4) 75 Amp 24 volt Mastervolt battery charger in Engine Room (2) 50 Amp 220 volt shore cables on Glendinning cable reels on bow Electrical bonding system Pilothouse switching panel w/generator start/stop panel Shore/generator selector switches, port/starboard shore cord selectors Analog Hertz/volt/amp meter for each source AC distribution panel #1 w/(24) breaker protected circuits AC distribution panel #2 w/(18) breaker protected circuits DC electronics panel w/(12) breaker protected circuits

---

## Remarks

---

PRECIOUS LADY is a very special 75' Hatteras. She has enjoyed conscientious and generous owners who have lavished her with improvements and care.

A look through the equipment list and photos will most assuredly create a desire for a personal inspection. Being a 2002 model she has a walk in full beam Lazarette. This invaluable storage area is a great upgrade from older models.

She was purchased in the Fall of 2016, refitted to their taste but before any use the boat they had always dreamed about became available. Her new \$17,000 Master shower has yet to be used!

Ready to go now, PRECIOUS LADY is certainly the best of the best available in this model lineup.

Easy to see in Ft. Lauderdale. Feb. 2019 yard visit included Micron Extra paint, prop speed, two step buff and wax on hull.

---

## Exclusions

---

While every effort was made to list all pertinent included equipment aboard PRECIOUS LADY, there are some personal belongings aboard. Prospective purchasers should assume any item not specifically mentioned herein will not convey at closing.

---

## Disclaimer

---

Specifications are provided for informational purposes only. Data was obtained from sources believed reliable but is not guaranteed by owner or brokers. Buyer assumes responsibility to verify all speeds, capacities, consumption's and other measurements contained herein and otherwise provided and agrees to instruct his agents to confirm such details prior to purchase. Vessel is subject to prior sale, price and inventory changes and withdrawal from market without notice.

---

## Исключения

---

При продаже яхты исключаются личные вещи владельца.

---

## Отказ от ответственности

---

Компания предоставляет описание судна или яхты добросовестно, но не может гарантировать точность этой информации, а также не ручается за техническое состояние. Покупатель должен проинструктировать своих агентов или оценщиков исследовать представленную информацию более подробно, по собственному желанию. Продажа судна или яхты, изменение цены или снятие с продажи будет происходить без предварительного уведомления.

# ФОТОГРАФИИ

**SALON LOOKING FORWARD**



**PORTSIDE CONVERTIBLE SOFA**



**STARBOARD SIDE SALON**



**DINING TABLE**



**SALON LOOKING AFT**



**GALLEY LOOKING FORWARD**



**GALLEY**



**GALLEY**



**GALLEY LOOKING TO PORT**



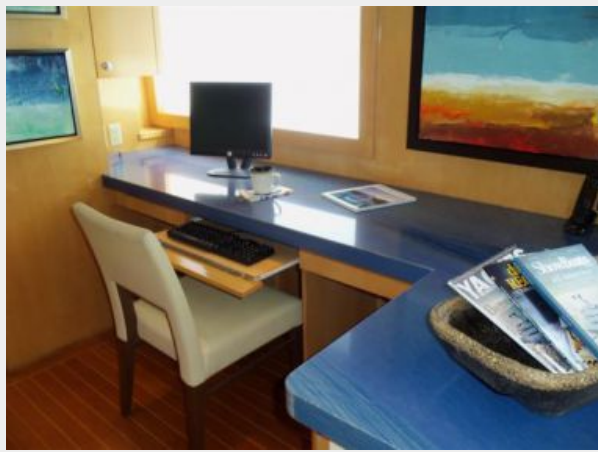
**GALLEY LOOKING AFT**



**GALLEY PANTRY**



### STARBOARD SIDE OFFICE AREA



### PILOTHOUSE



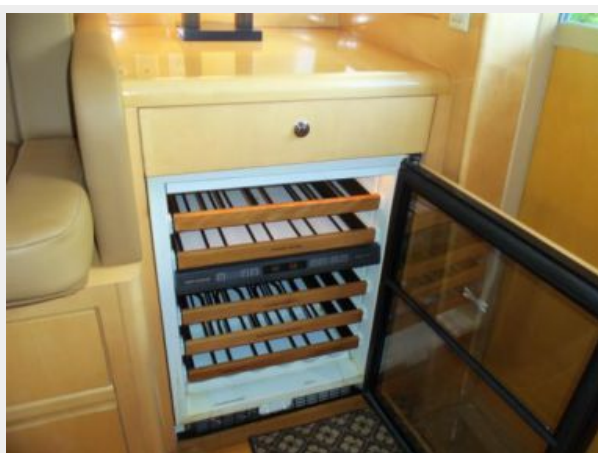
### HELM STATION



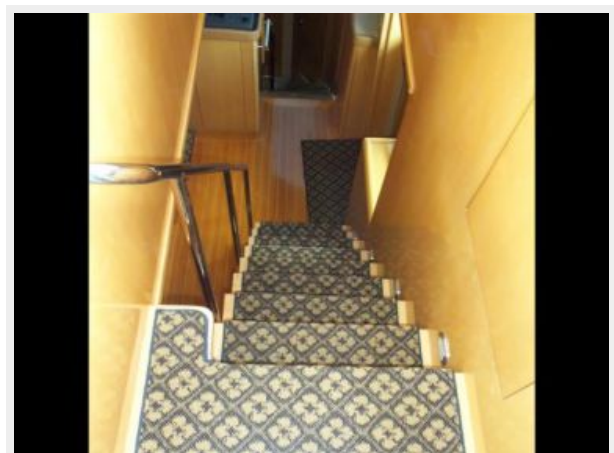
### DOUBLE HELM SEAT



### PILOTHOUSE WINE COOLER



### STAIRS TO FLYBRIDGE





**HELM TO PORT**



**HELM PORTSIDE**



**HELM CENTER**



**HELM STARBOARD**



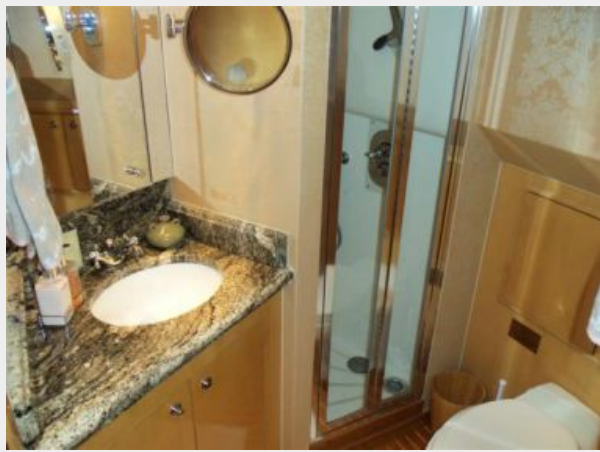
**HELM ABOVE**



**FORWARD ACCOMMODATION STAIRS**



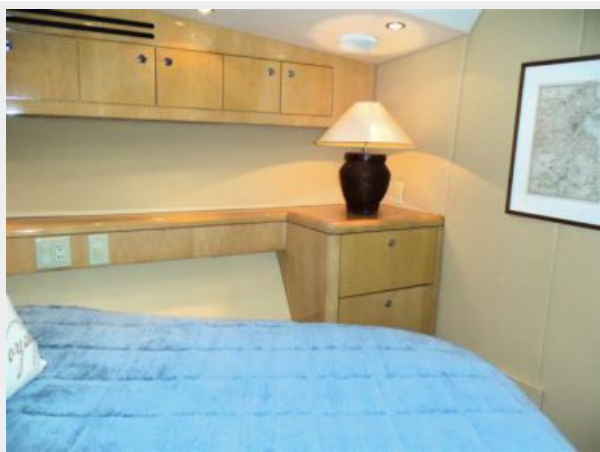
**DAY/VIP HEAD**



**VIP**



**VIP TO STARBOARD**



**VIP TO PORT**



**VIP STORAGE**



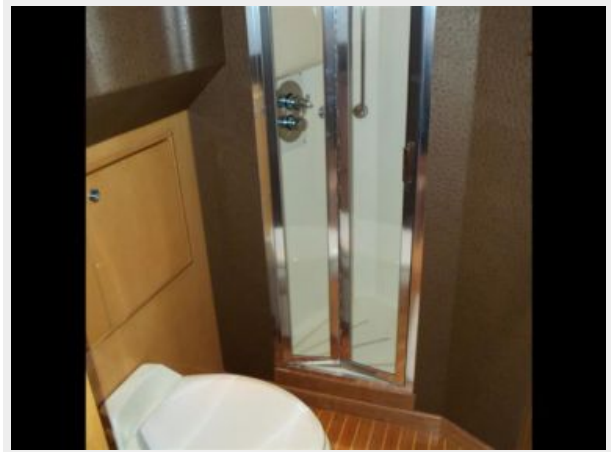
**CREW/FOURTH CABIN**



**CREW/FOURTH HEAD VANITY**



**CREW/FOURTH CABIN SHOWER**



**COMPANIONWAY LAUNDRY**



**MIDSHIP VIP LOOKING FORWARD**



**MIDSHIP VIP TO PORT**



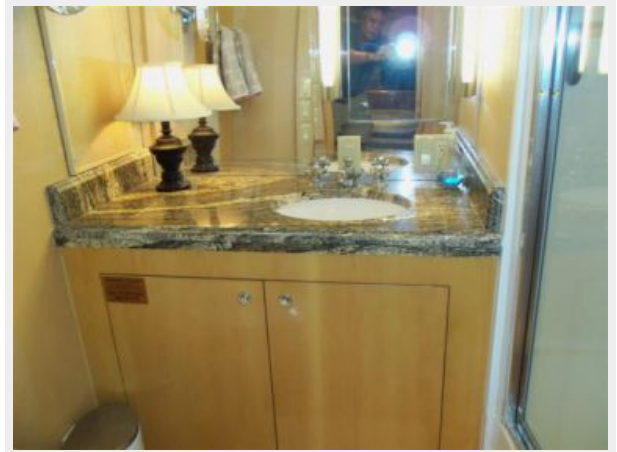
**MIDSHIP VIP TO STARBOARD**



**MIDSHIP VIP STORAGE**



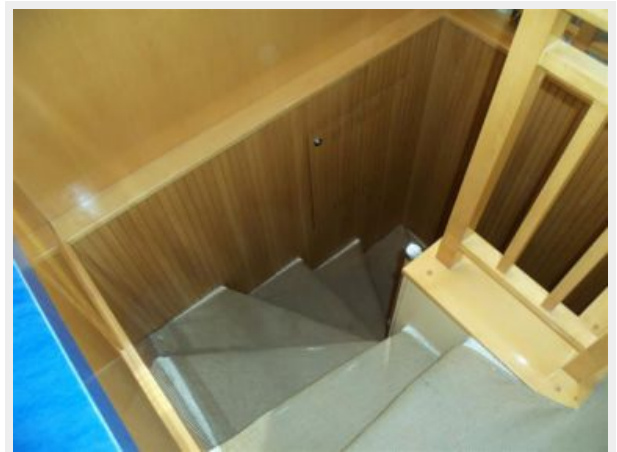
**MIDSHIP VIP HEAD VANITY**



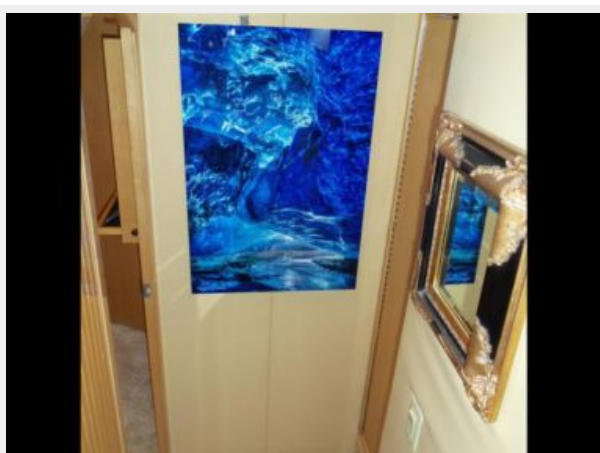
**MIDSHIP VIP JACUZZI/SHOWER**



**SALON STAIRS TO MASTER**



**COMPANIONWAY TO MASTER**



**MASTER LOOKING AFT**



**MASTER LOOKING STARBOARD**



**MASTER LOOKING PORT**



**MASTER LOOKING FORWARD**



**MASTER TV**



**PORT MASTER HEAD**



**HONEY ONYX SHOWER**



### HONEY ONYX SHOWER



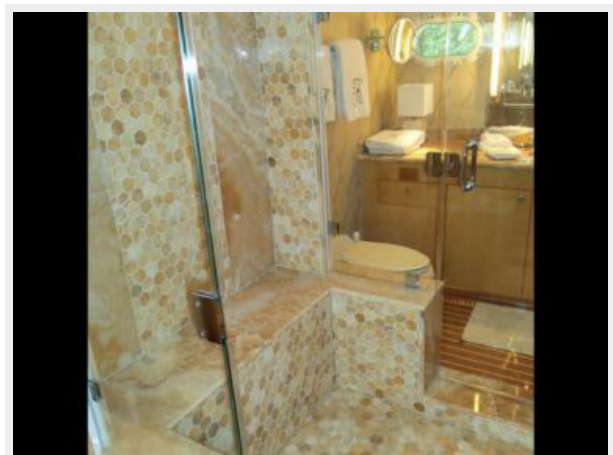
### NEW FIXTURES



### SHOWER LOOKING TO PORT



### SHOWER SEAT



### STARBOARD MASTER HEAD



### FOREDECK



**FOREDECK**



**BOARDING AREA**



**GREAT SHINE!**



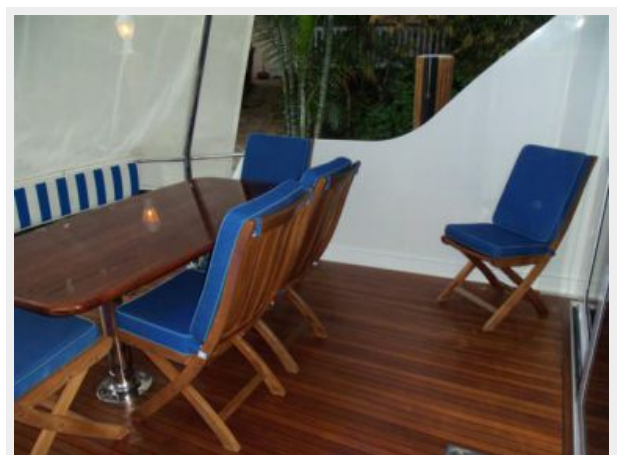
**ARCH EQUIPMENT**



**AFT DECK TABLE**



**AFT DECK LOOKING PORT**



**AFT DECK LOOKING STARBOARD**



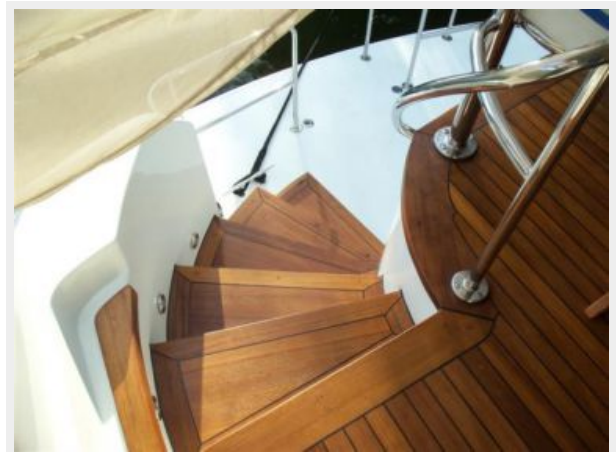
**CUSTOM AFT DECK BENCH SEAT**



**AFT DECK STARBOARD**



**SPORT DECK STEPS**



**SPORT DECK**



**SPORT DECK**





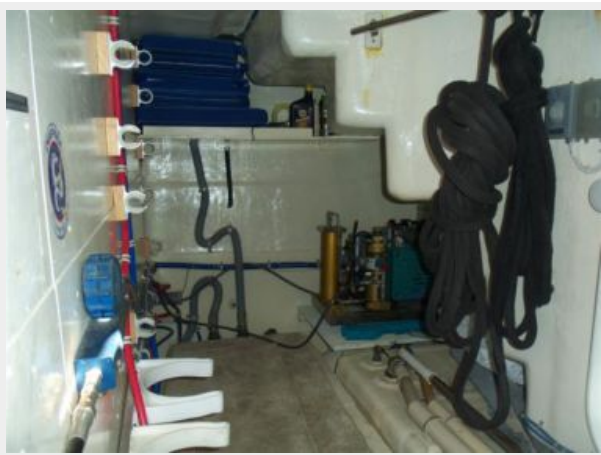
**STERN SHOT**



**LAZARETTE LOOKING TO PORT**



**LAZARETTE LOOKING TO STARBOARD  
w/DIVE COMPRESSOR**



**FLYBRIDGE LOOKING AFT**



**FLYBRIDGE LOOKING FORWARD**



**FLYBRIDGE STARBOARD SEAT**



**FLYBRIDGE PORT SEAT**



**FLYBRIDGE BAR**



**FLYBRIDGE STARBOARD FORWARD**



**FLYBRIDGE STARBOARD BAR**



**FLYBRIDGE PORT BAR STORAGE**



**BLUE ARCH AND HT LIGHTS**



**CUSTOM**



**COVERS FOR ALL**



**COVERS FOR ALL**



**FLYBRIDGE HELM**



**FLYBRIDGE HELM**



**HELM TO PORT**



### HELM CENTER



### HELM TO STARBOARD



### BOAT DECK GAS GRILL



### WAVE RUNNER



### 2010 AQUASCAN TENDER



### STARBOARD ENGINE



**PORT ENGINE**



**WATERMAKER**



**OUTBOARD PORT ENGINE**



**CUSTOM ENGINE ROOM SEALING**



**SUPERIOR CONDITION**



**CAT GAUGES**



### GENERATOR ROOM AFT GEN



### GENERATOR ROOM AC UNITS



### GENERATOR ROOM FORWARD GEN



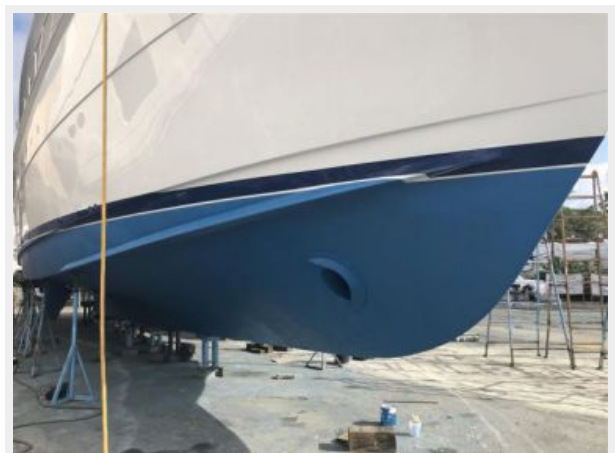
### UNDERWATER LIGHTS



### ALTERNATE PROFILE



### Feb 2019 Yard Visit



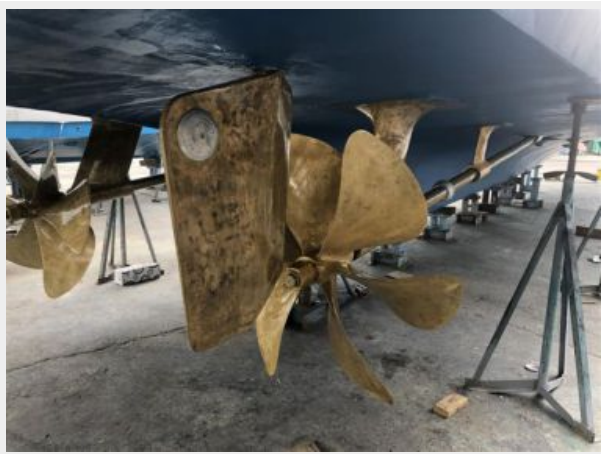
**Feb 2019 Yard Visit**



**Feb 2019 Yard Visit**



**Feb 2019 Yard Visit**



**Feb 2019 Yard Visit**



# КОНТАКТЫ

Андрей Шестаков (Andrey Shestakov) – ведущий яхтенный брокер отдела продаж яхт и судов компании Shestakov Yacht Sales Inc. Официальный представитель Shestakov Yacht Sales Inc. для русскоговорящих клиентов в центральном офисе компании в Майами/Форт Лодердейл/Флорида/США.

## Контактная информация

Email: [andrey@shestakovyachtsales.com](mailto:andrey@shestakovyachtsales.com)

Web: [shestakovyachtsales.com](http://shestakovyachtsales.com)

## Телефоны

Краснодарский край: **+7(918)465-66-44**

США, Майами, Флорида: **+1(954)274-4435**

## Время работы

Понедельник – Суббота: **9:00 - 21:00**  
EDT

Воскресенье: **Закрито**

## Адрес



Harbour Towne Marina, 850 NE 3rd St,  
STE 213, Dania, FL 33004