

AARANDA — BENETEAU



Builder: BENETEAU

Year Built: 1999

Model: Cruising Sailboat

Price: PRICE ON APPLICATION

Location: Puerto Rico

LOA: 36' 0" (10.97m)

Beam: 12' 6" (3.81m)

Max Draft: 5' 0" (1.52m)

Our experienced yacht broker, Andrey Shestakov, will help you choose and buy a yacht that best suits your needs **Aaranda — BENETEAU** from our catalogue. Presently, at Shestakov Yacht Sales Inc., we have a wide variety of yachts available on our sale's list. We also work in close contact with all the big yacht manufacturers from all over the world.

If you would like to buy a yacht **Aaranda — BENETEAU** or would like help answering any questions concerning purchasing, selling or chartering a yacht, please call **+1(954)274-4435**

TABLE OF CONTENTS

TABLE OF CONTENTS	2
SPECIFICATIONS	5
Overview	5
Basic Information	5
Dimensions	5
Speed, Capacities and Weight	5
Accommodations	5
Hull and Deck Information	6
Engine Information	6
DETAILED INFORMATION	7
Specifications	7
Engines	7
Tanks	8
Accommodations	8
Construction	8
Deck Equipment	8
Rigging	9
Forward Stateroom	9
Salon	10
Galley	10
Head	10
Nav Station	11
AFT CABIN:	11
Miscellaneous	11
Electronics	12
Exclusions	12
Disclaimer	12
PHOTOS	13

Lewmar 30 wick	14
Lewmar 44 wick	14
Solar panels	14
Solar panels	15
Tender	15
Mast	15
Interior	15
Salon	15
Salon	15
Salon sofa - wood salon table	16
salon storage	16
fwd stateroom	16
Head	16
Port side salon sofa	16
Port side salon storage	16
Nav station	17
Braker panel	17
Galley stove	17
Galley	17
Aft stateroom	18
Porthole	18
Hatch	18
Yanmar 37hp engine	19
Side View Drawing	19
Distribution	20
CONTACTS	21
Contact details	21
Telephones	21
Office hours	21

Address

21

SPECIFICATIONS

Overview

Don't miss this excellent condition Oceanis 361. Motivated seller ready to move on..... Price to sell

Beneteau family has been constructing sailing vessels. Recognized as the world leader in design and fabrication of sailing yachts, they offer some of the most advanced techniques of construction and production in the industry to build the strongest and most durable yachts possible. The Beneteau 361 will fulfill your dreams on the water. DYSID:3006272

Basic Information

Category: Cruising Sailboat

Model Year: 1999

Year Built: 1999

Country: Puerto Rico

Dimensions

LOA: 36' 0" (10.97m)

LWL: 31' 2" (9.50m)

Beam: 12' 6" (3.81m)

Max Draft: 5' 0" (1.52m)

Clearance: 49' 6" (15.09m)

Speed, Capacities and Weight

Displacement: 12790 Pounds

Water Capacity: 110 Gallons

Holding Tank: 15 Gallons

Fuel Capacity: 34 Gallons

Accommodations

Total Cabins: 2

Total Berths: 4

Total Heads: 1

Hull and Deck Information

Hull Material: Fiberglass

Hull Configuration: Monohull

Engine Information

Engines: 1

Manufacturer: Yanmar

Model: 3GM30F

Engine Type: Inboard

Fuel Type: Diesel

DETAILED INFORMATION

Specifications

Builder: Beneteau

Designer: Berret Racoupeau

Keel: Fin

Hull Shape: Monohull

Dimensions

LOA: 36 ft 5 in

Beam: 12 ft 6 in

LWL: 31 ft 2 in

Maximum Draft: 5 ft 2 in

Displacement: 13228 lbs

Bridge Clearance: 49 ft 6 in

Engines

Total Power: 29 HP

Engine Brand: Yanmar Year

Built: 1999

Engine Model: 3GM30F

Engine Type: Inboard

Engine/Fuel Type: Diesel

Propeller: 3 blade propeller

Drive Type: Direct Drive

Engine Power: 29 HP

Tanks

Fresh Water Tanks: 110gal

Fuel Tanks: 34gal

Holding Tanks: 15gal

Accommodations

Number of single berths: 2

Number of double berths: 2

Number of cabins: 2

Number of heads: 1

Construction

Hull: solid GRP laminate, structural inner grid with incorporated FRP floors reinforced with unidirectional roving

Deck: balsa sandwich for rigidity and sound and heat insulation. Full deck liner for insulation and easy maintenance.

Structural Bulkheads: bonded 360 degrees to hull and deck liners for maximum strength.

Interior Finish: cherry stained wood

Deck Equipment

- Stainless steel bow rail, bi-color navigation light.
- Stainless steel stern rail with horseshoe shoe buoy holder and agpole holder.
- 6 x 24" stainless steel stanchions with two sets of lifelines with gates.
- (2) stainless grab rails on the coachroof
- Extruded perforated aluminum toe rails
- Stainless steel stemhead fitting with anchor roller and fairlead
- (4) fairleads on the beam and in the stern
- (6) anodized aluminum mooring cleats
- Self bailing anchorwell with optional electric windlass.
- (2) genoa sheet track with adjustable cars
- Genoa sheet turning blocks with stoppers.

- Mainsheet traveler track with car on the on the coachroof.
- (6) deck-stoppers for halyards, furling lines, vang and mainsheet.
- (2) LEWMAR 44 CSTO genoa sheet winches mounted on cockpit coamings
- (2) LEMMR 30 CSTO maneuver-winch on the coachroof
- (1) adjustable dorade-type vent for ventilation
- (1) cockpit locker, life raft stowage
- (1) lazaret locker
- (1) locker for two gas bottles complying with safety standards
- Self-bailing cockpit.
- Leather-covered folding wheel (diameter 40") with instrument panel and removable wooden dropleaf cockpit table, stainless grabrail on pedestal.
- 12-volt console light
- Drink holders
- Engine instrument panel on coaming with protective Plexiglas cover and control lever on console.
- Compass on me steering pedestal.
- Access to swim platform by lowering helmsman's seat.
- Teak-inlaid transom skirt with protective rubber strip
- Teak-inlaid swim platform
- Stainless steel boarding ladder with plastic steps.
- Stern light
- (2) winch handle holders
- (2) winch handles

Rigging

- Anodized aluminum mast and boom
- Stainless steel rigging: forestay, babystay, lower shrouds, upper shrouds, intermediate shrouds double backstay
- (2) sets of aft-swept spreaders.
- Running rigging (1) mainsheet with blocks. (2) genoa sheets. (1) genoa halyard and (1) mainsail halyard, (1) main boom topping lift.
- Boom vang
- Genoa furler with furler drum above deck.
- Genoa (140%) with UV protection.
- Mast step with articulating blocks
- Stack pack main sail

Forward Stateroom

Headroom 6'3"

Double berth (6'7" x 5'7")

Shelf along the hull

Hanging locker to starboard

(2) reading lights

(1) LEWMAR 20 3/4" x 15 5/8" opening hatch with blind

(2) opening portholes (6 15/16" x 12 3/4")

Salon

- Headroom 6'4"
- Dining table with wood ddles, convertible to berth.
- U-shaped settee.
- Bar locker behind the settee back
- Stowage under the settees.
- Portside settee.
- (1) LEWMAR 20 3/4" x 15 5/8" opening deck hatch with blind.
- (2) opening portholes on the coachroof, 27 7/16" x 7 9/16" with curtain.
- (2) led overhead lights and (4) led reading lights.
- Storage cupboards behind settees.

Galley

- Headroom 6' 4"
- Stainless steel double sink with mixer tap pressurized hot and cold water system.
- Cutlery drawer.
- Trash can
- (2) burner LPG stove.
- 12v refrigeration.
- Icebox capacity 5.6 cubic ft.
- Hot water heater 6 gal
- Cupboards with louver inserts.
- Sink cover/cutting board
- (1) opening porthole 14 1/2"x 7 9/16" above the stove.
- (1) opening hatch 13" x 13".

Head

- Headroom 6'4".

- Molded easy clean unit.
- Separate shower compartment with teak seat.
- Hand held flexible shower unit.
- Toilet accessory holders
- Electric sump pump for shower.
- Built-in washbasin with mixer tap.
- Pressurized hot and cold water.
- Lockers for toilet accessories.
- Clothes hooks
- Holders for tumbler and toilet paper
- Marine toilet with holding tank.
- (1) LEWMAR 14 1/2" x 7 9/16" opening porthole

Nav Station

- Chart table with raised trim facing forward.
- Seat with stowage locker.
- (12) functions 12v control panel.
- Opening panel for navigation instruments
- (1) halogen overhead light.
- (1) red navigators light.

AFT CABIN:

- (1) large double berth, 6'7" x 6'7"
- Locker
- Hanging locker.
- Engine access panel.
- Overhead opening hatch 13" x 13"
- (1) opening porthole, 14 1/2" x 7 9/16".
- (1) opening porthole, 6 15/16" x 12 3/4"
- (2) reading lights.

Miscellaneous

- Cast Iron bulb keel with winglets
- (1) electric sump pump and ow switch.
- (1) electric bilge pump.
- (2) rigid water tanks.
- Teak agpole
- Owner's manual

- Sternrail seats
- Stereo with speakers
- Shore power cord
- Hot and cold cockpit shower

Electronics

Raytheon ST60 Tridata

Raymarine ST6000

GPS Lowrance Global Map 5300

Standard Horizon Eclipse + VHF with antenna.

Exclusions

Owner's personal belongings.

Disclaimer

The Company offers the details of this vessel or yacht in good faith but cannot guarantee or warrant the accuracy of this information nor warrant the condition of the vessel. A buyer should instruct his representatives, agents, or his surveyors, to investigate such details as the buyer desires validated. This vessel or yacht is offered subject to prior sale, price change, or withdrawal without notice.

PHOTOS





Lewmar 30 wick



Lewmar 44 wick



Solar panels



Solar panels



Tender



Mast



Interior



Salon



Salon



Salon sofa - wood salon table



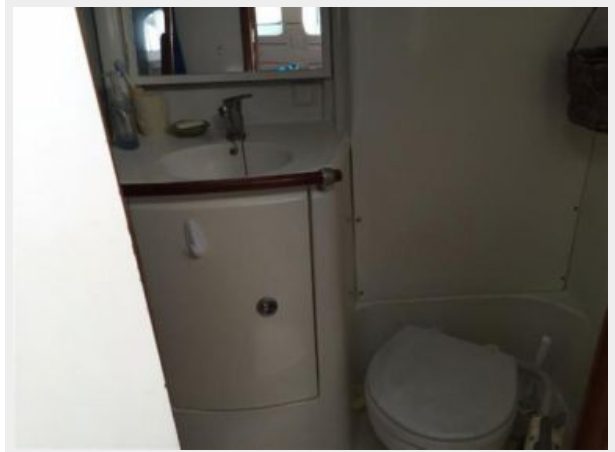
salon storage



fwd stateroom



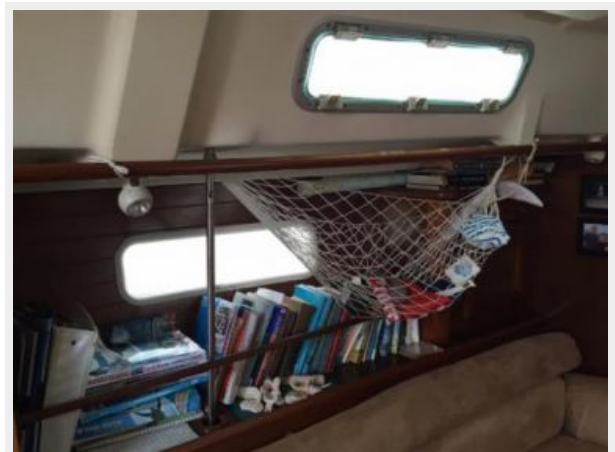
Head



Port side salon sofa



Port side salon storage



Nav station



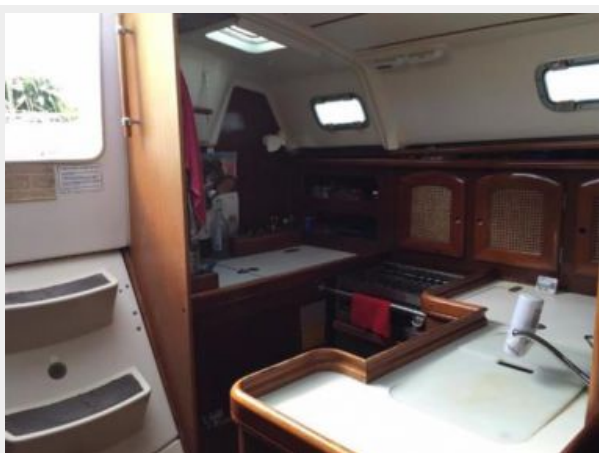
Braker panel



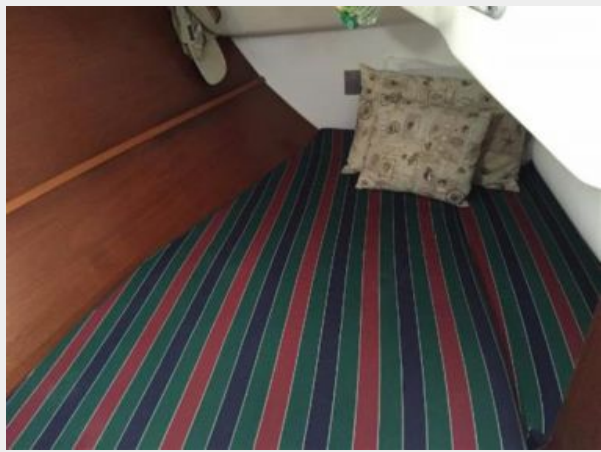
Galley stove



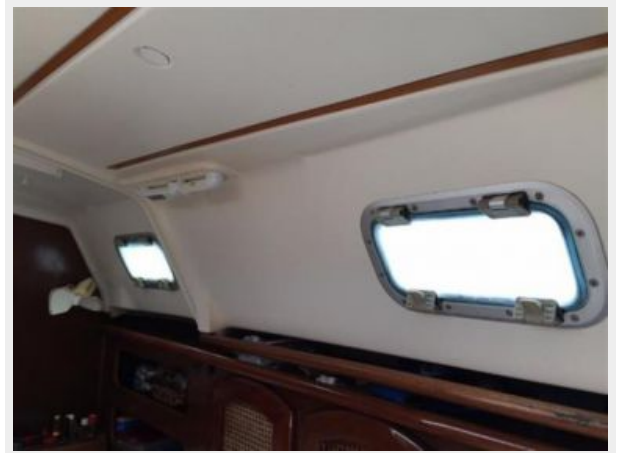
Galley



Aft stateroom



Porthole



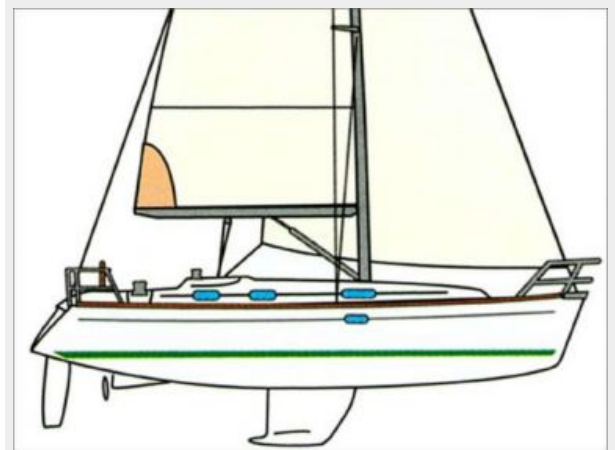
Hatch





Yanmar 37hp engine

Side View Drawing



Distribution



CONTACTS

Andrey Shestakov, leading yacht broker of the sales department of Shestakov Yacht Sales Inc. Shestakov Yacht Sales Inc., the official representative of the Miami/Fort Lauderdale FL headquarters.

Contact details

Email: andrey@shestakovyachtsales.com

Web: shestakovyachtsales.com/en/

Telephones

USA: +1(954)274-4435

Office hours

Monday – Saturday: **9:00 - 21:00** EDT

Sunday: **closed**

Address



Harbour Towne Marina, 850 NE 3rd St,
STE 213, Dania, FL 33004