

## AARANDA — BENETEAU



**Судостроитель:** BENETEAU

**Год постройки:** 1999

**Модель:** Крейсерская яхта

**Цена:** **ЦЕНА ЯХТЫ ПО ЗАПРОСУ**

**Местонахождение:** Puerto Rico

**Длина общая:** 36' 0" (10.97m)

**Ширина:** 12' 6" (3.81m)

**Макс. осадка:** 5' 0" (1.52m)

Купить Aaranda — BENETEAU а также выбрать подходящую вам яхту из нашего каталога яхт вам поможет опытный яхтенный брокер Андрей Шестаков. На сегодняшний день компания Shestakov Yacht Sales Inc. имеет большое количество яхт в собственном списке продаж, а также тесно сотрудничает со всеми крупными яхтенными производителями по всему миру.

Для того чтобы купить яхту Aaranda — BENETEAU а также проконсультироваться по любому вопросу связанному с покупкой, продажей, чартером яхт позвоните по телефону **+7(918)465-66-44**.

# ОГЛАВЛЕНИЕ

ОГЛАВЛЕНИЕ	2
ХАРАКТЕРИСТИКИ	5
Обзор	5
Основная информация	5
Размеры	5
Скорость, вместимость и масса	5
Размещение	5
Корпус и палуба	6
Информация о двигателе	6
ПОДРОБНОЕ ОПИСАНИЕ	7
Specifications	7
Engines	7
Tanks	8
Accommodations	8
Construction	8
Deck Equipment	8
Rigging	9
Forward Stateroom	9
Salon	10
Galley	10
Head	10
Nav Station	11
AFT CABIN:	11
Miscellaneous	11
Electronics	12
Исключения	12
Отказ от ответственности	12
ФОТОГРАФИИ	13

Lewmar 30 wich	14
Lewmar 44 wich	14
Solar panels	14
Solar panels	15
Tender	15
Mast	15
Interior	15
Salon	15
Salon	15
Salon sofa - wood salon table	16
salon storage	16
fwd stateroom	16
Head	16
Port side salon sofa	16
Port side salon storage	16
Nav station	17
Braker panel	17
Galley stove	17
Galley	17
Aft stateroom	18
Porthole	18
Hatch	18
Yanmar 37hp engine	19
Side View Drawing	19
Distribution	20
<b>КОНТАКТЫ</b>	<b>21</b>
Контактная информация	21
Телефоны	21
Время работы	21

Адрес

21

# ХАРАКТЕРИСТИКИ

## Обзор

Don't miss this excellent condition Oceanis 361. Motivated seller ready to move on..... Price to sell

Beneteau family has been constructing sailing vessels. Recognized as the world leader in design and fabrication of sailing yachts, they offer some of the most advanced techniques of construction and production in the industry to build the strongest and most durable yachts possible. The Beneteau 361 will fulfill your dreams on the water. DYSID:3006272

## Основная информация

**Тип судна:** Крейсерская яхта

**Модельный год:** 1999

**Год постройки:** 1999

**Страна:** Puerto Rico

## Размеры

**Длина общая:** 36' 0" (10.97m)

**Длина по ватерлинии:** 31' 2" (9.50m)

**Ширина:** 12' 6" (3.81m)

**Макс. осадка:** 5' 0" (1.52m)

**Трапы:** 49' 6" (15.09m)

## Скорость, вместимость и масса

**Водоизмещение:** 12790 Pounds

**Вместимость воды:** 110 Gallons

**Вместимость сточного бака:** 15 Gallons

**Объем топливного бака:** 34 Gallons

## Размещение

**Всего кают:** 2

**Всего коек:** 4

**Всего ком. состава:** 1

---

## Корпус и палуба

---

**Материал корпуса:** Fiberglass

**Комплектация корпуса:** Monohull

---

## Информация о двигателе

---

**Двигатели:** 1

**Производитель:** Yanmar

**Модель:** 3GM30F

**Тип двигателя:** Inboard

**Тип топлива:** Diesel

---

# ПОДРОБНОЕ ОПИСАНИЕ

---

## Specifications

---

Builder: Beneteau

Designer: Berret Racoupeau

Keel: Fin

Hull Shape: Monohull

### Dimensions

LOA: 36 ft 5 in

Beam: 12 ft 6 in

LWL: 31 ft 2 in

Maximum Draft: 5 ft 2 in

Displacement: 13228 lbs

Bridge Clearance: 49 ft 6 in

## Engines

---

Total Power: 29 HP

Engine Brand: Yanmar Year

Built: 1999

Engine Model: 3GM30F

Engine Type: Inboard

Engine/Fuel Type: Diesel

Propeller: 3 blade propeller

Drive Type: Direct Drive

Engine Power: 29 HP

---

## Tanks

---

Fresh Water Tanks: 110gal

Fuel Tanks: 34gal

Holding Tanks: 15gal

---

## Accommodations

---

Number of single berths: 2

Number of double berths: 2

Number of cabins: 2

Number of heads: 1

---

## Construction

---

Hull: solid GRP laminate, structural inner grid with incorporated FRP floors reinforced with unidirectional roving

Deck: balsa sandwich for rigidity and sound and heat insulation. Full deck liner for insulation and easy maintenance.

Structural Bulkheads: bonded 360 degrees to hull and deck liners for maximum strength.

Interior Finish: cherry stained wood

---

## Deck Equipment

---

- Stainless steel bow rail, bi-color navigation light.
- Stainless steel stern rail with horseshoe shoe buoy holder and agpole holder.
- 6 x 24" stainless steel stanchions with two sets of lifelines with gates.
- (2) stainless grab rails on the coachroof
- Extruded perforated aluminum toe rails
- Stainless steel stemhead fitting with anchor roller and fairlead
- (4) fairleads on the beam and in the stern
- (6) anodized aluminum mooring cleats
- Self bailing anchorwell with optional electric windlass.
- (2) genoa sheet track with adjustable cars
- Genoa sheet turning blocks with stoppers.



- Mainsheet traveler track with car on the on the coachroof.
- (6) deck-stoppers for halyards, furling lines, vang and mainsheet.
- (2) LEWMAR 44 CSTO genoa sheet winches mounted on cockpit coamings
- (2) LEMMR 30 CSTO maneuver-winch on the coachroof
- (1) adjustable dorade-type vent for ventilation
- (1) cockpit locker, life raft stowage
- (1) lazaret locker
- (1) locker for two gas bottles complying with safety standards
- Self-bailing cockpit.
- Leather-covered folding wheel (diameter 40") with instrument panel and removable wooden dropleaf cockpit table, stainless grabrail on pedestal.
- 12-volt console light
- Drink holders
- Engine instrument panel on coaming with protective Plexiglas cover and control lever on console.
- Compass on me steering pedestal.
- Access to swim platform by lowering helmsman's seat.
- Teak-inlaid transom skirt with protective rubber strip
- Teak-inlaid swim platform
- Stainless steel boarding ladder with plastic steps.
- Stern light
- (2) winch handle holders
- (2) winch handles

## Rigging

---

- Anodized aluminum mast and boom
- Stainless steel rigging: forestay, babystay, lower shrouds, upper shrouds, intermediate shrouds double backstay
- (2) sets of aft-swept spreaders.
- Running rigging (1) mainsheet with blocks. (2) genoa sheets. (1) genoa halyard and (1) mainsail halyard, (1) main boom topping lift.
- Boom vang
- Genoa furler with furler drum above deck.
- Genoa (140%) with UV protection.
- Mast step with articulating blocks
- Stack pack main sail

## Forward Stateroom

---

Headroom 6'3"

Double berth (6'7" x 5'7")

Shelf along the hull

Hanging locker to starboard

(2) reading lights

(1) LEWMAR 20 3/4" x 15 5/8" opening hatch with blind

(2) opening portholes (6 15/16" x 12 3/4")

---

## Salon

---

- Headroom 6'4"
- Dining table with wood ddes, convertible to berth.
- U-shaped settee.
- Bar locker behind the settee back
- Stowage under the settees.
- Portside settee.
- (1) LEWMAR 20 3/4" x 15 5/8" opening deck hatch with blind.
- (2) opening portholes on the coachroof, 27 7/16" x 7 9/16" with curtain.
- (2) led overhead lights and (4) led reading lights.
- Storage cupboards behind settees.

---

## Galley

---

- Headroom 6' 4"
- Stainless steel double sink with mixer tap pressurized hot and cold water system.
- Cutlery drawer.
- Trash can
- (2) burner LPG stove.
- 12v refrigeration.
- Icebox capacity 5.6 cubic ft.
- Hot water heater 6 gal
- Cupboards with louver inserts.
- Sink cover/cutting board
- (1) opening porthole 14 1/2"x 7 9/16" above the stove.
- (1) opening hatch 13" x 13".

---

## Head

---

- Headroom 6'4".

- Molded easy clean unit.
- Separate shower compartment with teak seat.
- Hand held flexible shower unit.
- Toilet accessory holders
- Electric sump pump for shower.
- Built-in washbasin with mixer tap.
- Pressurized hot and cold water.
- Lockers for toilet accessories.
- Clothes hooks
- Holders for tumbler and toilet paper
- Marine toilet with holding tank.
- (1) LEWMAR 14 1/2" x 7 9/16" opening porthole

---

## Nav Station

- Chart table with raised trim facing forward.
- Seat with stowage locker.
- (12) functions 12v control panel.
- Opening panel for navigation instruments
- (1) halogen overhead light.
- (1) red navigators light.

---

## AFT CABIN:

- (1) large double berth, 6'7" x 6'7"
- Locker
- Hanging locker.
- Engine access panel.
- Overhead opening hatch 13" x 13"
- (1) opening porthole, 14 1/2" x 7 9/16".
- (1) opening porthole, 6 15/16" x 12 3/4"
- (2) reading lights.

---

## Miscellaneous

- Cast Iron bulb keel with winglets
- (1) electric sump pump and ow switch.
- (1) electric bilge pump.
- (2) rigid water tanks.
- Teak agpole
- Owner's manual

- Sternrail seats
- Stereo with speakers
- Shore power cord
- Hot and cold cockpit shower

## Electronics

---

Raytheon ST60 Tridata

Raymarine ST6000

GPS Lowrance Global Map 5300

Standard Horizon Eclipse + VHF with antenna.

## Исключения

---

При продаже яхты исключаются личные вещи владельца.

## Отказ от ответственности

---

Компания предоставляет описание судна или яхты добросовестно, но не может гарантировать точность этой информации, а также не ручается за техническое состояние. Покупатель должен проинструктировать своих агентов или оценщиков исследовать представленную информацию более подробно, по собственному желанию. Продажа судна или яхты, изменение цены или снятие с продажи будет происходить без предварительного уведомления.

# ФОТОГРАФИИ





Lewmar 30 wich



Lewmar 44 wich



Solar panels



**Solar panels**



**Tender**



**Mast**



**Interior**



**Salon**



**Salon**



Salon sofa - wood salon table



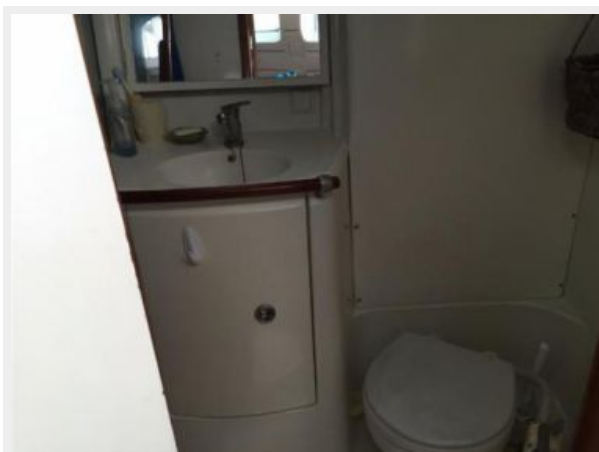
salon storage



fwd stateroom



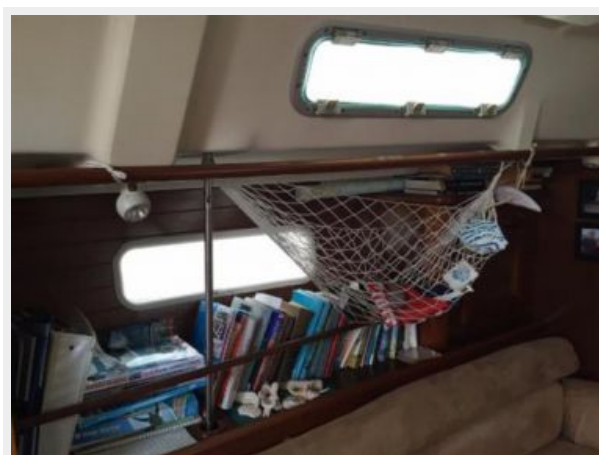
Head



Port side salon sofa



Port side salon storage





Nav station



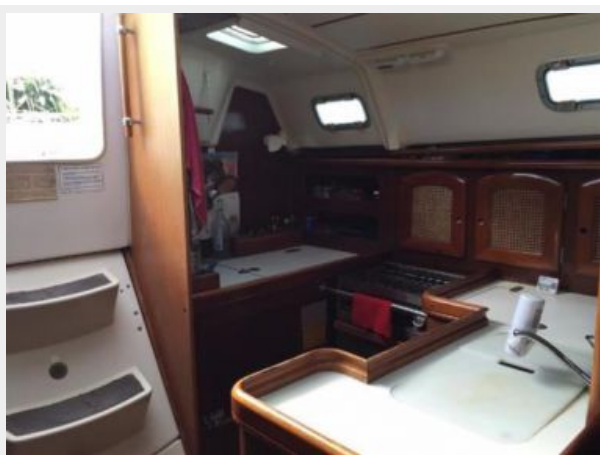
Braker panel



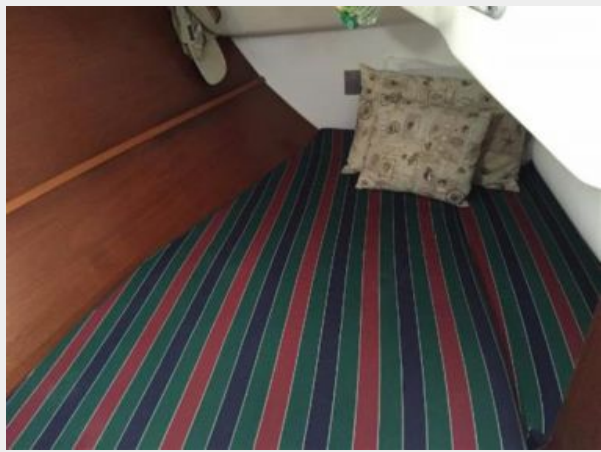
Galley stove



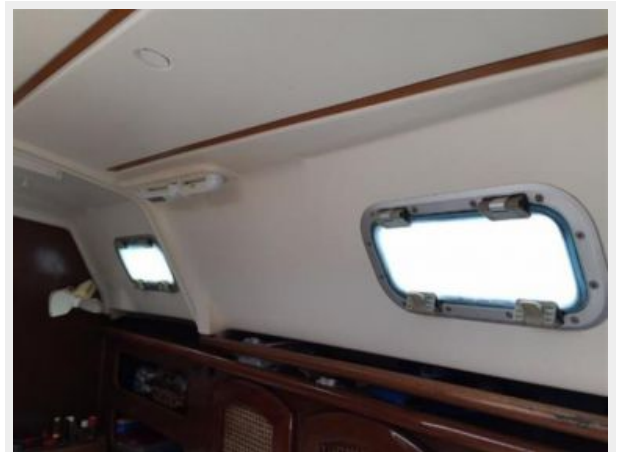
Galley



### Aft stateroom



### Porthole



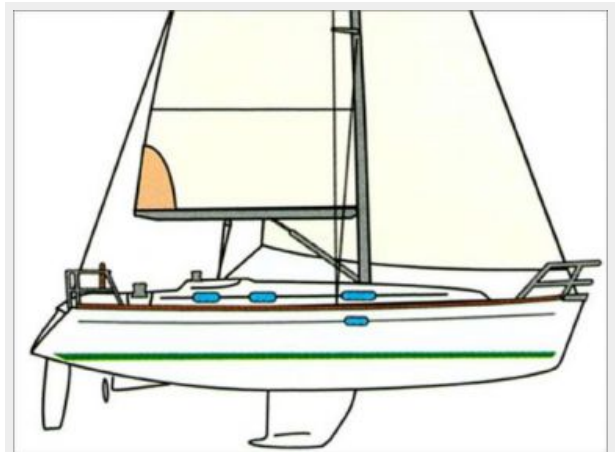
### Hatch





**Yanmar 37hp engine**

**Side View Drawing**



## Distribution



# КОНТАКТЫ

---

Андрей Шестаков (Andrey Shestakov) – ведущий яхтенный брокер отдела продаж яхт и судов компании Shestakov Yacht Sales Inc. Официальный представитель Shestakov Yacht Sales Inc. для русскоговорящих клиентов в центральном офисе компании в Майами/Форт Лодердейл/Флорида/США.

## Контактная информация

---

Email: [andrey@shestakovyachtsales.com](mailto:andrey@shestakovyachtsales.com)

Web: [shestakovyachtsales.com](http://shestakovyachtsales.com)

## Телефоны

---

Краснодарский край: **+7(918)465-66-44**

США, Майами, Флорида: **+1(954)274-4435**

## Время работы

---

Понедельник – Суббота: **9:00 - 21:00**  
EDT

Воскресенье: **Закрито**

## Адрес

---



Harbour Towne Marina, 850 NE 3rd St,  
STE 213, Dania, FL 33004